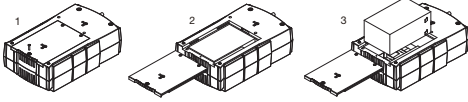


## Battery Replacement

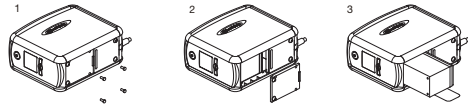
### Intelligent LCD Series, AVR Series

MODEL: CP600LCD, CP825LCD, CP800AVR, CP685AVR-G, CP825AVR-G, CP685AVRLCD-G, CP825AVRLCD-G, AVR9750U, AVR900U, AVR9750LCD, AVR900LCD



1. Place the UPS on its top and remove the retaining screw (figure 1).
2. Slide the battery compartment cover completely off of the unit (figure 2).
3. Remove the battery from the compartment and disconnect the battery wires from the battery. Install the replacement battery by connecting the red wire to the positive (+) terminal and the black wire to the negative (-) terminal of the battery. (figure 3)
4. Slide the battery compartment cover over the battery and tighten the retaining screw.
5. Charge the unit for 4 – 8 hours to ensure the UPS performs expected runtimes.

MODEL: CP850AVRLCD, CP1000AVRLCD

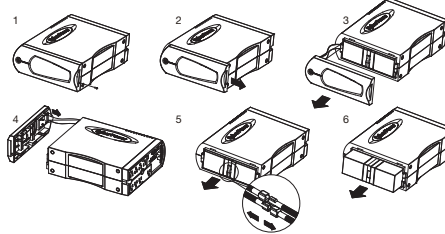


1. Place the UPS on its side and locate the battery compartment cover on the bottom of the UPS. Remove the four (4) retaining screws and pull the battery compartment cover off the UPS (figure 1 & 2).
2. Remove the battery from the compartment and disconnect the battery wires from the batteries. Install the replacement batteries by connecting the red wire and black wire to the same color wires from the battery pack. Put the battery pack into the compartment (figure 3).
3. Slide the battery compartment cover over the battery and tighten the retaining screw. Charge the unit for 4 – 8 hours to ensure the UPS performs expected runtimes.

1

### AVR Series

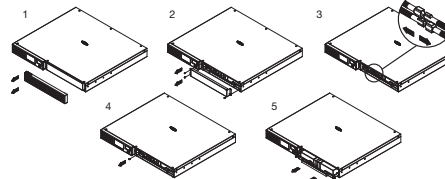
MODEL: CP900AVR, CP1200AVR, CP1500AVRT, CP1285AVRLCD, CP1350AVRLCD, CP1500AVRLCD



1. Place the UPS on its side to locate and remove the front panel retaining screws from the bottom of the UPS.
2. Slide the cover (front panel) towards the bottom of the UPS. Remove it from the unit.
3. Remove the two retaining screws from the cable connectors.
4. Disconnect the black and red cable.
5. Remove the four retaining screws holding the battery pack in place.
6. Remove the battery pack.
7. Install the replacement batteries by connecting the red and black wires to the same color wires from the battery pack. Put the battery pack back into the compartment.
8. Replace the battery compartment cover and tighten the retaining screw. Charge the unit for 4-8 hours to ensure the UPS performs expected runtimes.

### Smart APP Intelligent LCD Series

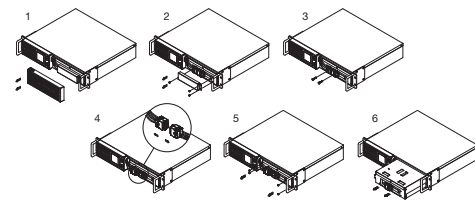
MODEL: OR500LCDRM1U, OR700LCDRM1U, OR1000LCDRM1U, OR1500LCDRM1U



1. Remove the right side front panel.
2. Remove the three retaining screws for the cable protection cover and remove the cover.
3. Disconnect the black and red cable.
4. Remove the one retaining screw holding the battery pack in place.
5. Remove the battery pack.
6. Install the new battery pack. Assemble the screws, cover, cable and front panel in the reverse order of the previous steps. Charge the unit for 4-8 hours to ensure the UPS performs expected runtimes.

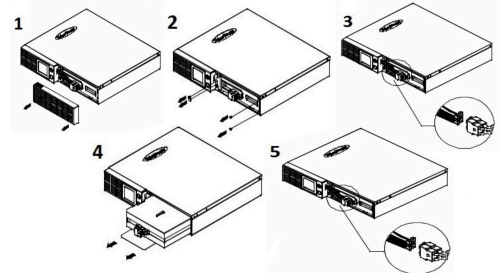
2

MODEL: OR1500LCDRM2U, OR2200LCDRM2U, OR1500LCDRTXL2U, OR2200LCDRTXL2U



1. Remove the right side front panel.
2. Remove the three retaining screws for the cable protection cover and remove the cover.
3. Remove the two retaining screws from the cable connectors.
4. Disconnect the black and red cable.
5. Remove the four retaining screws holding the battery pack in place.
6. Remove the battery pack.
7. Install the new battery pack. Assemble the screws, cover, cable and front panel in the reverse order of the previous steps. Charge the unit for 4-8 hours to ensure the UPS performs expected runtimes.

MODEL: OR1500LCDRT2U, OR2200LCDRT2U,

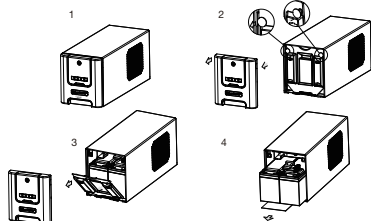


1. Remove the right side front panel.
2. Remove four screws from battery compartment cover and remove the cover completely off the unit.
3. Disconnect the black and red cable
4. Insert the new battery pack. Assemble the screws, cover and front panel in the reverse sequence of above steps.
5. Install the replacement batteries by connecting the red and the black wire to the same color wires from the battery pack. Recharge the unit for at least 8 hours to ensure the UPS performs expected runtime.

3

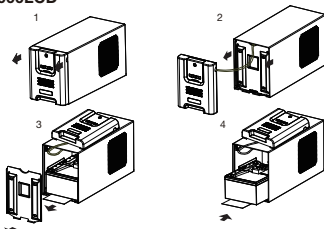
### Smart APP SINEWAVE Series

MODEL: PR750LCD



1. Remove the front panel of the UPS.
2. Pull out both round knobs and remove the battery compartment cover completely off of the unit.
3. Remove the batteries from the compartment.
4. Disconnect the battery wires from the batteries.
5. Install the replacement batteries by connecting the wire bundle (composed of one red wire and one black wire) to the connector from the battery pack. Put the batteries back into the compartment.
6. Re-install the battery compartment cover and push both round knobs back into place. Put the front panel back on the UPS.
7. Connect to AC power and charge the new batteries for up to 16 hours to insure a full charge.

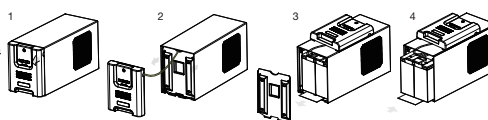
MODEL: PR1000LCD



1. Remove the front panel of the UPS.
2. Remove two screws from the battery compartment cover and slide the cover completely off of the unit.
3. Remove the batteries from the compartment. Disconnect the battery wires from the batteries.
4. Install the replacement batteries by connecting the wire bundle (composed of one red wire and one black wire) to the connector from the battery pack.
5. Put the batteries back into the compartment. Re-install the battery compartment cover and tighten the retaining screws. Put the front panel back on the UPS.
6. Connect to AC power and charge the new batteries for up to 16 hours to insure a full charge.

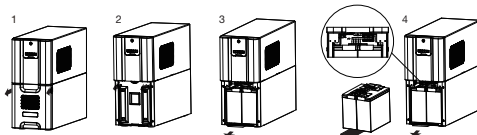
4

MODEL: PR1500LCD



1. Remove the front panel of the UPS.
2. Remove two screws from the battery compartment cover and slide the cover completely off of the unit.
3. Remove the batteries from the compartment. Disconnect the battery wires from the batteries.
4. Install the replacement batteries by connecting the wire bundle (composed of one red wire and one black wire) to the connector from the battery pack.
5. Put the batteries back into the compartment. Re-install the battery compartment cover and tighten the retaining screws. Put the front panel back on the UPS.
6. Connect to AC power and charge the new batteries for up to 16 hours to insure a full charge.

MODEL: PR2200LCD, PR3000LCD

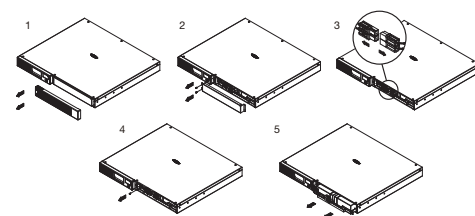


1. Remove the front panel of the UPS and two screws from the battery compartment cover and slide the cover completely off of the unit.
2. Pull out the battery pack on the outside from the compartment. Disconnect the battery connector from the batteries.
3. Before removing the battery pack on the inside, unlock the cable tie and pull out the battery wires. Disconnect the battery connector from the batteries.
4. Install the replacement battery pack on the inside by connecting the wire bundle connector (composed of one red wire and one black wire) to the connector from the battery pack. Lock the battery wires back with the cable tie.
5. Install the replacement batteries on the outside by connecting the wire bundle connector (composed of one red wire and one black wire) to the connector from the battery pack. Put the battery pack on the outside back into the compartment.
6. Re-install the battery compartment cover and tighten the retaining screws and put the front panel back on the UPS.
7. Connect to AC power and charge the new batteries for up to 16 hours to insure a full charge.

Note: The battery pack on the outside has a fuse, while the battery pack on the inside does not.

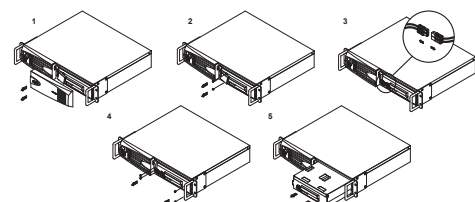
5

MODEL: PR750LCDRM1U, PR1000LCDRM1U



1. Remove the right side front panel.
2. Remove the two retaining screws for the cable protection cover and remove the cover.
3. Disconnect the black and red cable.
4. Remove the one retaining screw holding the battery pack in place.
5. Remove the battery pack.
6. Install the new battery pack. Assemble the screws, cover, cable and front panel in the reverse sequence of the above steps. Charge the unit for 4-8 hours to ensure the UPS performs expected runtimes.

MODEL: PR1500SWRM2U, PR2200SWRM2U

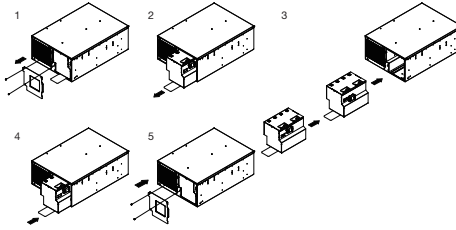


1. Remove the right side front panel.
2. Remove the two retaining screws for the cable protection cover and remove the cover.
3. Disconnect the black and red cable.
4. Remove the four retaining screws holding the battery pack in place.
5. Remove the battery pack.
6. Install the new battery pack. Assemble the screws, cover, cable and front panel in the reverse order of the previous steps. Charge the unit for 4-8 hours to ensure the UPS performs expected runtimes.

6

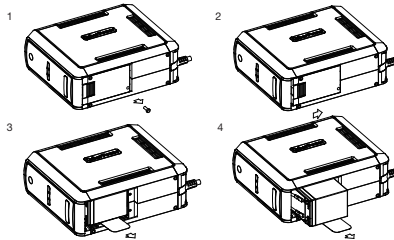
### PFC SINEWAVE Series

MODEL: PR5000LCDRTL5U, PR6000LCDRTL5U



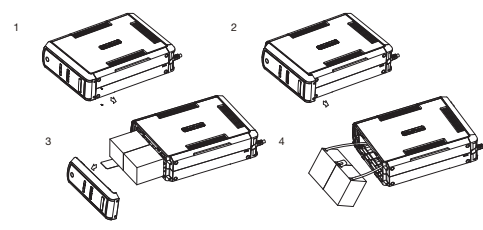
1. Remove the front panel.
2. Remove the two retaining screws of the cable protection cover and remove the cover.
3. Pull the plastic sticker out slowly to remove the battery module.
4. Put the new battery modules back into the compartment.
5. Tighten the screws and replace the cable protection cover and the front panel.

MODEL: CP850PFCLCD, CP1000PFCLCD



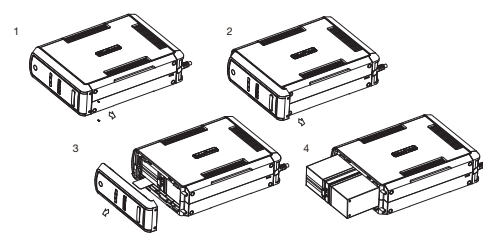
1. Turn the UPS on its side. Remove the retaining screw located on the bottom of the UPS.
2. Slide the battery compartment cover completely off of the unit.
3. Remove the batteries from the compartment.
4. Disconnect the battery wires from the batteries.
5. Install the replacement batteries by connecting the red wire (+) and black wire (-) to the same color connectors from the battery pack. Put the batteries back into the compartment.
6. Slide back the battery compartment cover and tighten the retaining screw. Recharge the UPS for 8-16 hours to fully charge the battery.

MODEL: CP1350PFCLCD



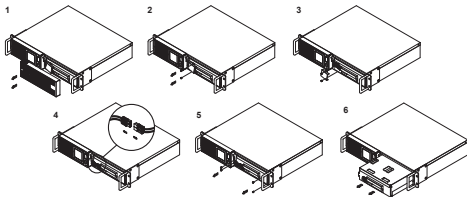
1. Turn the UPS on its side. Remove the front panel retaining screws located on the bottom of the UPS.
2. Slide the battery compartment cover (front panel) completely off of the unit.
3. Remove the batteries from the compartment.
4. Disconnect the battery wires from the batteries.
5. Install the replacement batteries by connecting the red wire (+) and black wire (-) to the same color connectors from the battery pack. Put the batteries back into the compartment.
6. Slide back the battery compartment cover and tighten the retaining screws. Recharge the UPS for 8-16 hours to fully charge the battery.

MODEL: CP1500PFCLCD



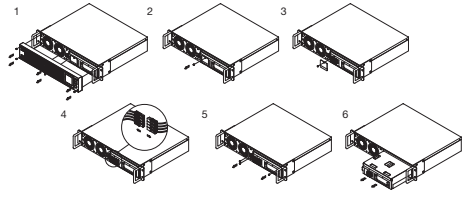
1. Turn the UPS on its side. Remove the front panel retaining screws located on the bottom of the UPS.
2. Slide the battery compartment cover (front panel) completely off of the unit.
3. Remove the batteries from the compartment.
4. Disconnect the battery wires from the batteries.
5. Install the replacement batteries by connecting the wire bundle (composed of one red wire and one black wire) to the connector from the battery pack. Put the batteries back into the compartment.
6. Slide back the battery compartment cover and tighten the retaining screws. Recharge the UPS for 8-16 hours to fully charge the battery.

MODEL: PR1000LCDRTL2U, PR1000LCDRTL2Ua, PR1500LCDRTL2U, PR2200LCDRTL2U, PR3000SWRM2U



1. Remove the right side front panel.
2. Remove the three retaining screws for the cable protection cover and remove the cover.
3. Remove the two retaining screws from the cable connectors.
4. Disconnect the black and red cable.
5. Remove the four retaining screws holding the battery pack in place.
6. Remove the battery pack.
7. Install the new battery pack. Assemble the screws, cover, cable and front panel in the reverse order of the previous steps. Charge the unit for 4-8 hours to ensure the UPS performs expected runtimes.

MODEL: PR1000LCDRTL2Ua, PR1500LCDRTL2U, PR2200LCDRTL2U, PR3000LCDRTL2U, PR3000LCDRTL2U



1. Remove the six retaining screws, and remove the front panel from the UPS.
2. Remove the two retaining screws for the cable protection cover and remove the cover.
3. Remove the two retaining screws from the cable connectors.
4. Disconnect the black and red cable.
5. Remove the three retaining screws holding the battery pack in place.
6. Remove the battery pack.
7. Install the new battery pack. Assemble the screws, cover, cable and front panel in the reverse order of the previous steps. Charge the unit for 4-8 hours to ensure the UPS performs expected runtimes.

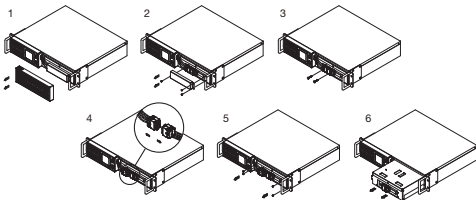
7

8

9

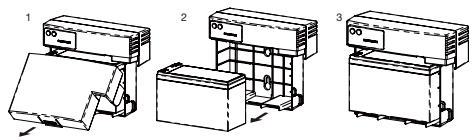
### FTTx Series

MODEL: OR1500PF CRT2U, OR2200PF CRT2U



1. Remove the right side front panel.
2. Remove the three retaining screws for the cable protection cover and remove the cover.
3. Remove the two retaining screws from the cable connectors.
4. Disconnect the black and red cable.
5. Remove the four retaining screws holding the battery pack in place.
6. Remove the battery pack.
7. Install the new battery pack. Assemble the screws, cover, cable and front panel in the reverse order of the previous steps. Charge the unit for 4-8 hours to ensure the UPS performs expected runtimes.

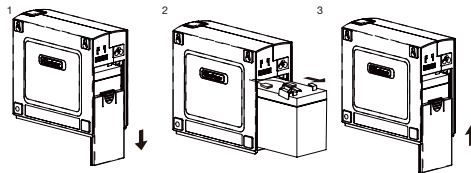
MODEL: CSN27U12V-NA2, CSN27U12V-NA3, CSN27U12V-NA3-G, CSN27U12V-XL



1. Remove the battery cover.
2. Disconnect battery cable connector to remove battery.
3. Replace with new battery and re-connect the battery connector.
4. Make sure battery is fixed properly in the compartment and close the battery cover.

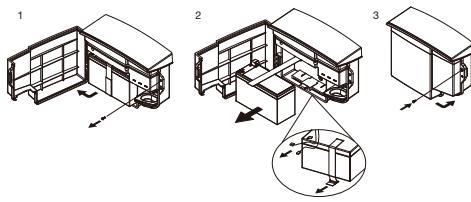
10

MODEL: DTC36U12V-NA3-G



1. Slide off the battery cover at the back of the DTC36U12V unit.
2. Remove the battery from the enclosure.
3. Disconnect both battery cable connectors.
4. Install the new battery by connecting the red lead to the positive terminal and the black lead to the negative terminal.
5. Slide the battery back into the normal operation.
6. Replace battery cover to resume normal operation.

MODEL: CS24C12V2-E



1. Remove the case screw.
2. Open the battery cover.
3. Loosen the battery strap.
4. Disconnect battery cable connector to remove battery.
5. Replace with new battery and re-connect the battery connector.
6. Tighten the battery strap
7. Close the battery cover and lock the case screw.

11

**CyberPower**<sup>®</sup>

**Cyber Power Systems, Inc.**

[www.cyberpower.com](http://www.cyberpower.com)

**For USA and Canada:**

4241 12th Ave East, Suite 400

Shakopee, MN 55379

Toll-free: (877) 297-6937

**For all other regions:**

Please visit our website for local contact information.