

# Dell Wyse 3040 Thin Client

## User Guide



## Notes, cautions, and warnings

 | **NOTE:** A NOTE indicates important information that helps you make better use of your product.

 | **CAUTION:** A CAUTION indicates either potential damage to hardware or loss of data and tells you how to avoid the problem.

 | **WARNING:** A WARNING indicates a potential for property damage, personal injury, or death.

© 2017 - 2018 Dell Inc. or its subsidiaries. All rights reserved. Dell, EMC, and other trademarks are trademarks of Dell Inc. or its subsidiaries. Other trademarks may be trademarks of their respective owners.

# Welcome to Dell Wyse 3040 thin client

Dell Wyse 3040 thin client is a low-cost entry level thin client platform. These thin clients have a x86 processor, which allows you to run Wyse ThinOS, PCoIP enabled Wyse ThinOS, and Wyse ThinLinux. The platform is used as a thin client by connecting to any monitor and allows you to use a remote access client for VDI or cloud-based computing.

Topics:

- [About this guide](#)
- [Dell Wyse external references](#)

## About this guide

This guide is intended for Wyse 3040 thin clients which run Wyse ThinOS, PCoIP enabled Wyse ThinOS, and Wyse ThinLinux. It provides hardware specifications and OS-specific configurations to help you work with Wyse 3040 thin clients.

## Dell Wyse external references

This section provides links to Dell support sites for **Dell Wyse thin clients**.

- [Dell reference guides](#)
- [Dell Service and Support](#) — Latest software images
- [Dell Wyse Device Manager](#) — Information about Dell remote management software
- [Dell and the Environment](#) — Information about Dell compliance with RoHS and with the Waste Electrical and Electronic Equipment (WEEE)
- [Dell and e-Recycling](#) — Information about recycling and reuse of Dell products
- [Dell Warranty Registration\\*](#) — Register your product



# Wyse 3040 thin client hardware installation

For more information on the hardware installation, see *Dell Wyse 3040 thin client Quick Start Guide*.

# Wyse 3040 thin client on ThinOS

This section provides the instructions on how to easily configure and efficiently manage Wyse 3040 thin client that runs on ThinOS.

Topics:

- [Logging on to the Wyse 3040 thin client running Wyse ThinOS](#)
- [Configuring the dual head display settings in Dell Wyse ThinOS](#)
- [Configuring the network settings on Dell Wyse ThinOS](#)
- [Configuring peripherals settings on Wyse ThinOS](#)
- [Power state](#)
- [Configuring the broker setup on Dell Wyse ThinOS](#)
- [Configuring the WDA settings on Dell Wyse ThinOS](#)

## Logging on to the Wyse 3040 thin client running Wyse ThinOS

What you see after logging on to the server depends on the administrator configurations.

- **Users with a Classic Desktop** - will see the classic ThinOS desktop with full taskbar, desktop, and Connect Manager familiar to ThinOS users. This option is the default out-of-the-box experience and is recommended for terminal server environments with published applications and for backward compatibility with ThinOS 6.x versions.
- **Users with a Zero Desktop** - will see the Zero Desktop with the Zero Toolbar showing the assigned list of connections from which to select. This option is recommended for VDI and any full-screen only connections.

In any desktop case, you can select the desktop option you want (Classic Desktop or Zero Desktop) and create the connections you need using the Visual Experience tab on the **Remote Connections** dialog box.

To open the **Remote Connections** dialog box, perform one of the following tasks:

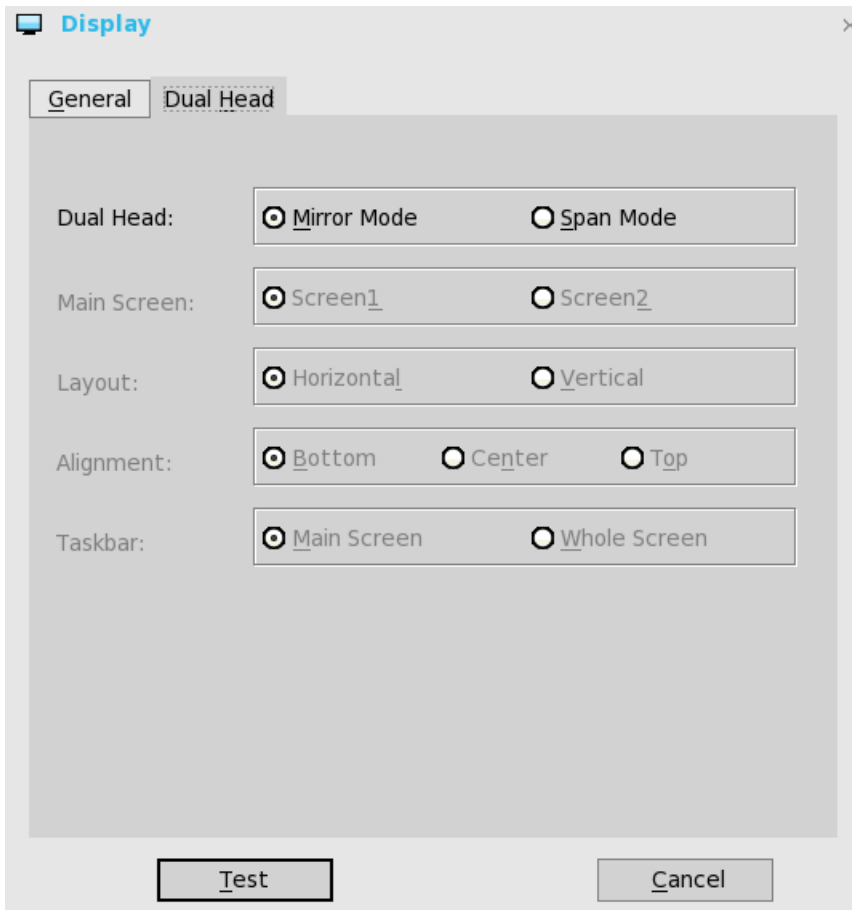
- **Classic Desktop** — Click User Name , and then select **System Setup > Remote Connections**.
- ① | **NOTE: User Name is the user who is logged-on and is located at the lower-left pane of the taskbar**
- **Zero Desktop** — Click the **System Settings** icon on the Zero Toolbar, and then select **Remote Connections**.

## Configuring the dual head display settings in Dell Wyse ThinOS

To configure the dual head display settings in Wyse ThinOS:

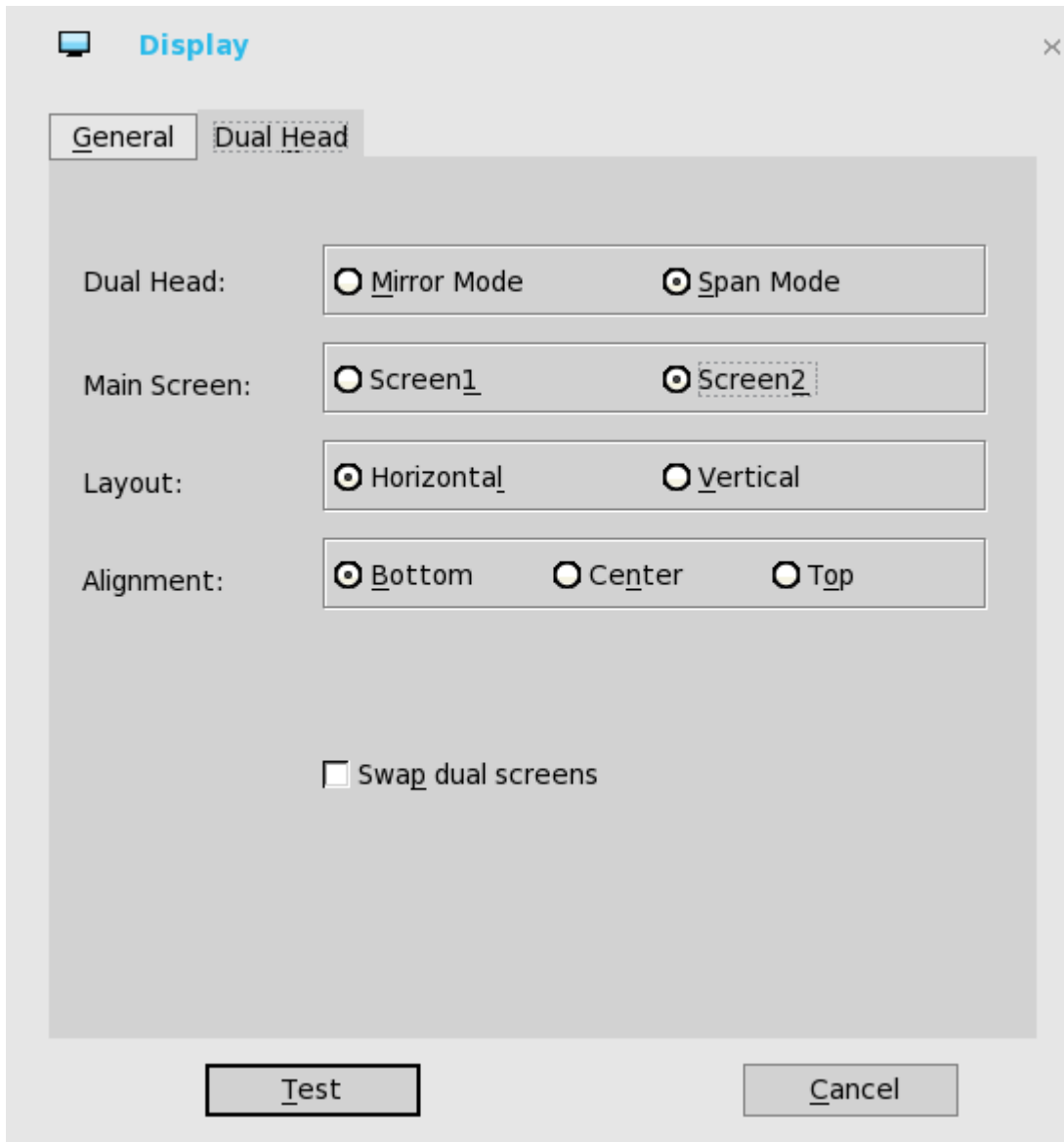
- 1 From the desktop menu, click **System Setup**, and then click **Display**.  
The **Display** dialog box is displayed.
- 2 Click the **Dual Head** tab, and use the following guidelines:





This feature is applicable for supported dual-monitor-capable thin clients only.

- a **Dual Head**—Select **Mirror Mode** to have the two monitors work in a matching state, or **Span Mode** to have the two monitors work individually.
  - b **Main Screen**—Select which of the two monitors you want to be the main screen (**Screen1** or **Screen2**). The other screen is extended from the main screen.
  - c **Layout**—Select how you want the two monitors to be oriented to each other.
    - Horizontal** — where you move between the monitors from the left and right of the screens.
    - Vertical**— where you move between the monitors from the top and bottom of the screens.
  - d **Alignment**— Select how you want the monitors to be aligned **Bottom**, **Center**, or **Top**. Bottom means screens are bottom-aligned in a horizontal orientation; Center means screens are center-aligned; Top means screens are top-aligned in a horizontal orientation.
  - e **Taskbar (Classic Desktop Only)**—Select under which screen you want the taskbar to appear **Whole Screen** or **Main Screen**
- Gamma Supported Monitors Only**— Use the Gamma Setup tab to adjust the saturation values for Red, Green and Blue on VGA connected monitors supporting gamma settings, if you feel the default settings are too light. Be aware that the Gamma Setup tab will be disabled once you click **Save+Exit**. You can enable it again by setting `rgamma={1-100} ggamma={1-100} bgamma={1-100}` in the Resolution INI parameter. For more information, see *Dell Wyse ThinOS INI Guide*.



For Swap dual screens, when you set Main Screen to Screen2, an additional check box is displayed at the bottom of the tab that allows you to swap dual screens. If you clear the check box, the Screen1 is usually the left one or the top one in dual display. When you set Main Screen to Screen2, the main screen is changed to the right screen or bottom screen. If you select the **Swap dual screens** check box, you are able to set Main Screen to Screen2, but still have it at the left side or the top side, which is considered more user friendly.

## Configuring the network settings on Dell Wyse ThinOS

To configure the network settings use the following options:

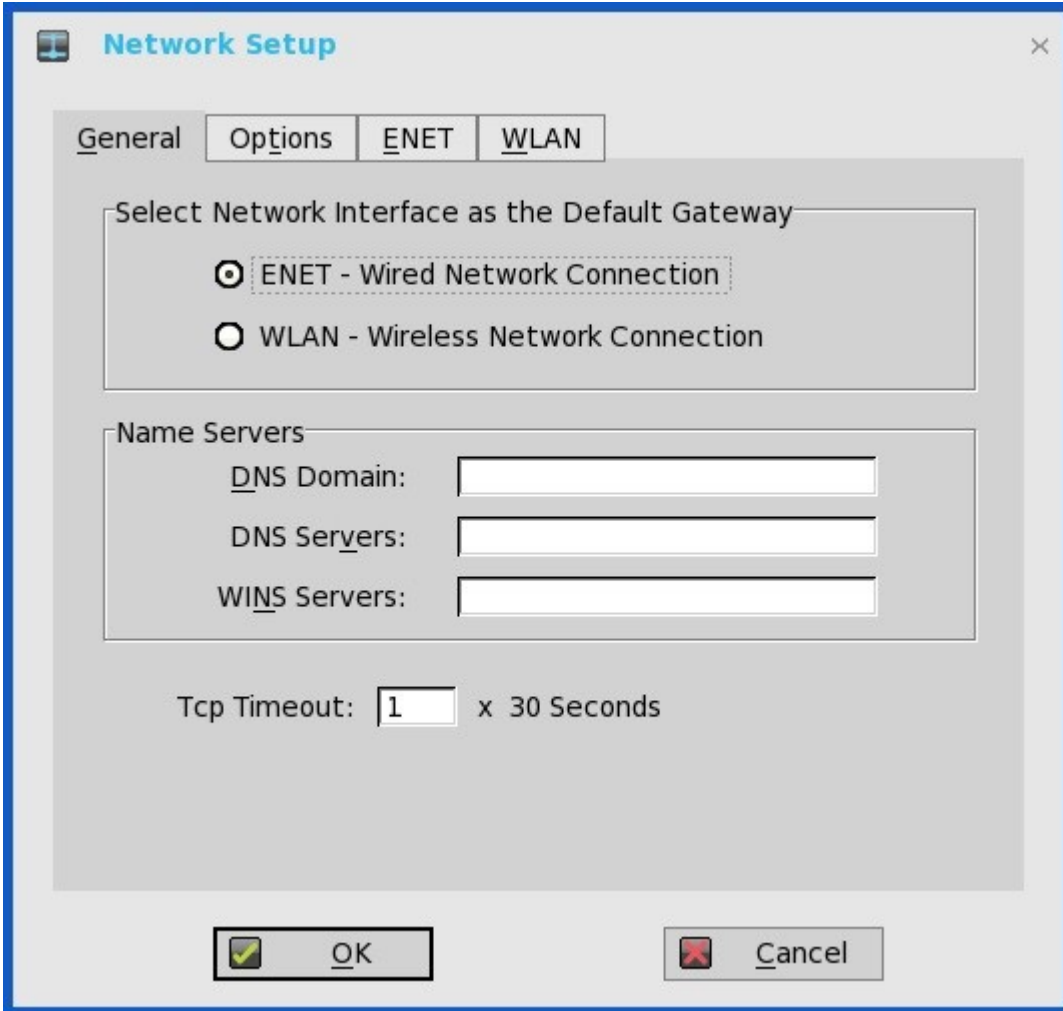
- [Configuring the general settings.](#)
- [Configuring the DHCP options settings.](#)
- [Configuring the ENET settings.](#)
- [Configuring the WLAN settings.](#)



# Configuring the General settings

To configure the general network settings:

- 1 From the desktop menu, click **System Setup**, and then click **Network Setup**.  
The **Network Setup** dialog box is displayed.



- 2 Click the **General** tab, and use the following guidelines:
  - a To set the default gateway, select the type of network interface from the available options.
    - 1 **Single Network support** — Either wireless or wired network is connected.
      - **ENET** — Click this option, if you want set up the Ethernet Wired Network Connection.
      - **WLAN** — Click this option, if you want to set up the Wireless Network Connection.
      - If you use wireless network after selecting ENET connection or wired network after selecting WLAN connection, then the system log "WLAN: set default gate way xxx.xxx.xxx.xxx" for first case and "ENET: set default gate way xxx.xxx.xxx.xxx" for second case are printed to ensure that the UI setting reflects the actual usage.
  - 2 **Dual Network support** — Both wireless and wired networks are connected. The default gateway is determined by the UI settings.
- b Enter the URL address of the DNS domain in the **DNS Domain** box.

**NOTE: The User Interface (UI) will not be changed automatically.**



- c Enter the IP address of the DNS server in the **DNS Server** box.

Use of DNS is optional. DNS allows you to specify remote systems by their host names rather than IP addresses. If a specific IP address (instead of a name) is entered for a connection, it is used to make the connection. Enter the DNS domain and the network address of an available DNS server. The function of the DNS domain entry is to provide a default suffix to be used in name resolution. The values for these two boxes may be supplied by a DHCP server. If the DHCP server supplies these values, they replace any locally configured values. If the DHCP server does not supply these values, the locally configured values will be used.

**NOTE:** You can enter up to 16 DNS server addresses, separated by a semicolon, comma, or space. The first address is for the primary DNS server and the rest are secondary DNS servers or backup DNS servers .

- d Enter the IP address of the WINS server in the **WINS Server** box.

Use of WINS is optional. Enter the network address of an available WINS name server. WINS allows you to specify remote systems by their host names rather than IP addresses. If a specific IP address (instead of a name) is entered for a connection, it is used to make the connection. These entries can be supplied through DHCP, if DHCP is used. DNS and WINS provide essentially the same function, name resolution. If both DNS and WINS are available, the thin client attempts to resolve the name using DNS first and then WINS.

You can enter two WINS server addresses (primary and secondary), separated by a semicolon, comma, or space.

- e Enter the digit multiplier of 30 seconds in the **TCP Timeout** box to set the time-out value of a TCP connection. The value must be **1** or **2** which means the connection time-out value is from  $1 \times 30 = 30$  seconds to  $2 \times 30 = 60$  seconds. If the data for connecting to the server is not acknowledged and the connection is timed out, setting the time-out period retransmits the sent data and again tries to connect to the server till the connection is established.

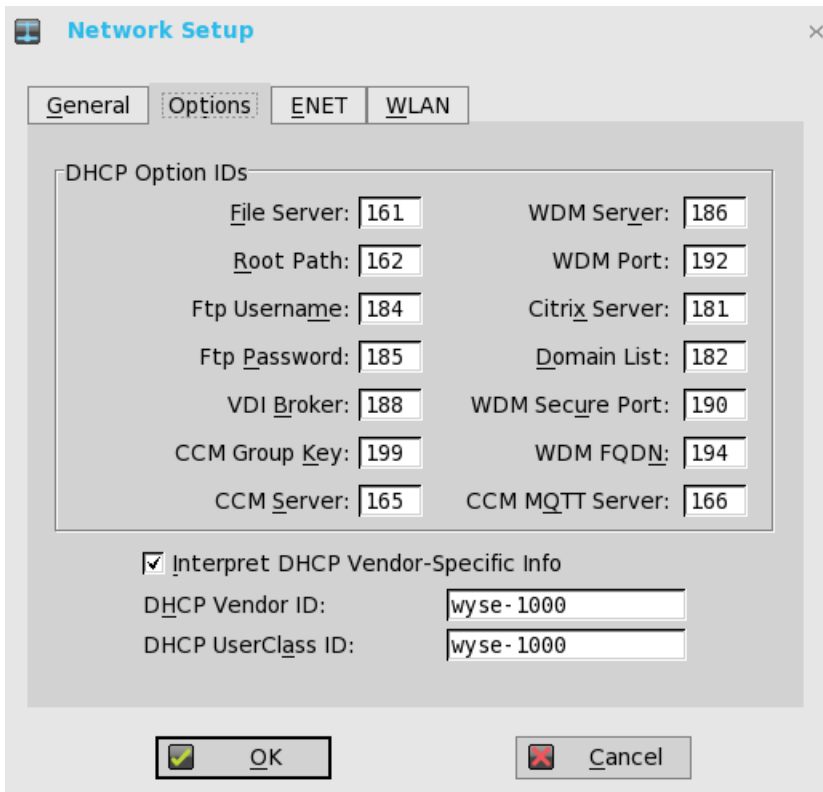
- 3 Click **OK** to save the settings.

## Configuring the DHCP options settings

To configure the options settings:

- 1 From the desktop menu, click **System Setup**, and then click **Network Setup**.  
The **Network Setup** dialog box is displayed.
- 2 Click the **Options** tab, and use the following guidelines:



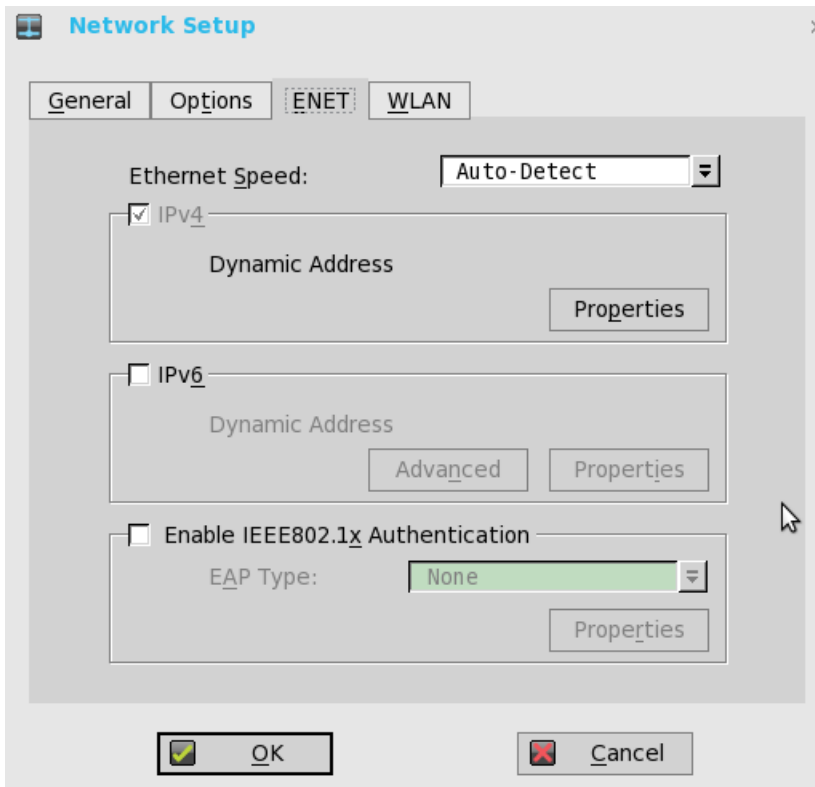


- a **DHCP Option IDs** — Enter the supported DHCP options. Each value can only be used once and must be between **128** and **254**.
  - b **Interpret DHCP Vendor-Specific Info** — Select this check box for automatic interpretation of the vendor information.
  - c **DHCP Vendor ID** — Shows the DHCP Vendor ID when the dynamically allocated over DHCP/BOOTP option is selected.
  - d **DHCP UserClass ID** — Shows the DHCP UserClass ID when the dynamically allocated over DHCP/BOOTP option is selected.
- 3 Click **OK** to save the settings.

## Configuring the ENET settings

To configure the ENET settings:

- 1 From the desktop menu, click **System Setup**, and then click **Network Setup**.  
The **Network Setup** dialog box is displayed.
- 2 Click the **ENET** tab, and use the following guidelines:



- a **Ethernet Speed** — Normally the default (**Auto-Detect**) should be selected, but another selection can be made if automatic negotiation is not supported by your network equipment. Selections include **Auto-Detect**, **10 MB Half-Duplex**, **10 MB Full-Duplex**, **100 MB Half-Duplex**, **100 MB Full-Duplex**, and **1 GB Full-Duplex**.  
The **10 MB Full-Duplex** option can be selected locally at the device, however, this mode may need to be negotiated through **AutoDetect**.
- b The **IPV4** check box is selected by default. Click **Properties** to set various options supported by IPV4.
  - **Dynamically allocated over DHCP/BOOTP** — Selecting this option enables your thin client to automatically receive information from the DHCP server. The network administrator must configure the DHCP server using DHCP options to provide information. Any value provided by the DHCP server replaces any value entered locally on the Options tab, however, locally entered values are used if the DHCP server fails to provide replacement values.
  - **Statically specified IP Address** — Select this option to manual enter the IP Address, Subnet Mask and Default Gateway:
    - **IP Address** — Must be a valid network address in the server environment. The network administrator must provide this information.
    - **Subnet Mask** — Enter the value of the subnet mask. A subnet mask is used to gain access to machines on other subnets. The subnet mask is used to differentiate the location of other IP addresses with two choices: same subnet or other subnet. If the location is other subnet, messages sent to that address must be sent through the Default Gateway, whether specified through local configuration or through DHCP. The network administrator must provide this value.
    - **Default Gateway** — Use of gateways is optional. Gateways are used to interconnect multiple networks (routing or delivering IP packets between them). The default gateway is used for accessing the internet or an intranet with multiple subnets. If no gateway is specified, the thin client can only address other systems on the same subnet. Enter the address of the router that connects the thin client to the internet. The address must exist on the same subnet as the thin client as defined by the IP address and the subnet mask. If DHCP is used, the address can be supplied through DHCP.
- c Select the **IPV6** check box, and then click **Advanced** to select various IPV6 supported setting options from the available check boxes.
- d Click **properties** and use the following guidelines:
  - **Wait DHCP** — Selecting this option enables your thin client to wait for IPV6 DHCP before the sign-in, if not selected the system will only wait for IPV4 DHCP if enabled.
  - **Dynamically allocated over DHCP/BOOTP** — Selecting this option enables your thin client to automatically receive information from the DHCP server. The network administrator must configure the DHCP server (using DHCP options) to

provide information. Any value provided by the DHCP server replaces any value entered locally on the **Options** tab, however, locally entered values are used if the DHCP server fails to provide replacement values.

- **Statically specified IP Address** — Select this option to manually enter the IP Address, Subnet Mask and Default Gateway.
  - **IP Address** — Must be a valid network address in the server environment. The network administrator must provide this information.
  - **Subnet Mask** — Enter the value of the subnet mask. For more information, see various options supported by IPV4 in this section.
  - **Default Gateway** — Use of gateways is optional. For more information, see various options supported by IPV4 in this section.
- **DNS Servers** — Use of DNS is optional. DNS allows you to specify remote systems by their host names rather than IP addresses. If a specific IP address (instead of a name) is entered for a connection, it is rather than DNS is used to make the connection. Enter the network address of an available DNS server. The value for this box may be supplied by a DHCP server. If the DHCP server supplies this value, it replaces any locally configured value. If the DHCP server does not supply this value, the locally configured value is used.
- e Select the check box to enable IEEE802.1x Authentication.
  - **EAP Type** — If you have enabled the **Enable IEEE 802.1x authentication** check box, select the EAP Type option you want (**TLS**, **LEAP** or **PEAP**).
  - **TLS** — If you select the **TLS** option, click **Properties** to open and configure the **Authentication Properties** dialog box.
    - Select the **Validate Server Certificate** check box because it is mandatory to validate your server certificate.
  - **NOTE:** The CA certificate must be installed on the thin client. Also note that the server certificate text field supports a maximum of approximately 127 characters, and supports multiple server names.
  - If you select the **Connect to these servers** check box, the box is enabled where you can enter the IP address of server.
  - Click **Browse** to find and select the Client Certificate file and Private Key file you want.

The following kinds of server names are supported — all examples are based on Cert common name **company.dell.com**

**NOTE:** Using only the FQDN, that is **company.wyse.com** does not work. You must use one of the options (note that **\*.dell.com** is the most common option as multiple authentication servers may exist): **servername.dell.com**

\*.dell.com  
\*.dell.com  
\*.com

- f **LEAP** — If you select the **LEAP** option, click **Properties** to open and configure the **Authentication Properties** dialog box. Be sure to use the correct username and password for authentication. The maximum length for the username or the password is 64 characters.
- g **PEAP** — If you select the **PEAP** option, click **Properties** to open and configure the **Authentication Properties** dialog box. Be sure to select either **EAP\_GTC** or **EAP\_MSCHAPv2**, and then use the correct username, password and domain. Validate Server Certificate is optional.
- **NOTE:** The server certificate text box for LEAP and PEAP supports a maximum of approximately 127 characters, and supports multiple server names.
- h To configure EAP-GTC, enter the username only. The password or PIN is required when authenticating.  
To configure EAP-MSCHAPv2, enter the username, password and domain.

**IMPORTANT:** The domain/username in the username box is supported, but you must leave the domain box blank.

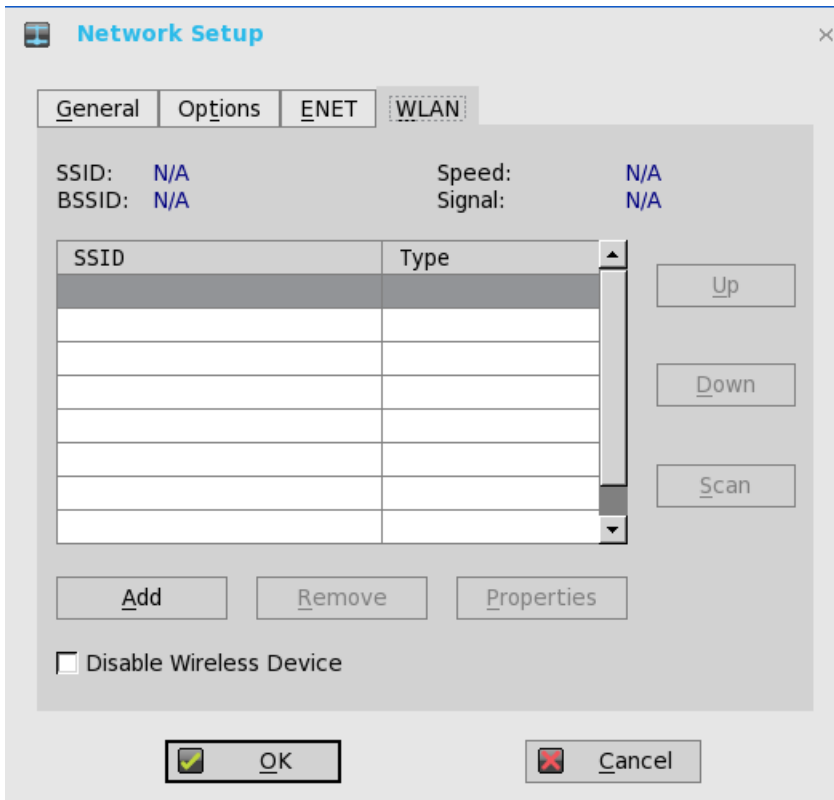
The CA certificate must be installed on the thin client and the server certificate is forced to be validated. When EAP-MSCHAPv2 is selected in EAP type in the **Authentication Properties** dialog box (for IEEE802.1x authentication), an option to hide the domain is available for selection. Username and Password boxes are available for use, but the **Domain** text box is disabled.

- 3 Click **OK** to save the settings.

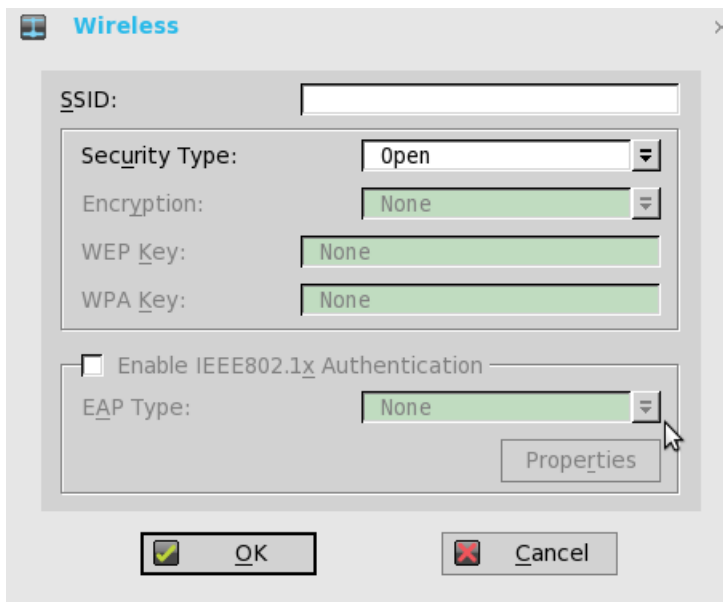


# Configuring the WLAN settings

- 1 From the desktop menu, click **System Setup**, and then click **Network Setup**. The **Network Setup** dialog box is displayed.
- 2 Click the **WLAN** tab, and use the following guidelines:



- a **Add**— Use this option to add and configure a new SSID connection. You can configure the SSID connection from the available security type options.



- b After you configure the SSID connection, the added SSID connection is listed on the page of the **WLAN** tab.



- c **Remove** — Use this option, if you want to remove a SSID connection by selecting the SSID connection from the list.
  - d **Properties** — Use this option to view and configure the authentication properties of a SSID connection that is displayed in the list.
  - e Select the **Disable Wireless Device** check box, if you want to disable a wireless device.
- 3 Click **OK** to save the settings.

## Configuring peripherals settings on Wyse ThinOS

The **Peripherals** dialog box enables you to configure the settings for the keyboard, mouse, camera, and printer.

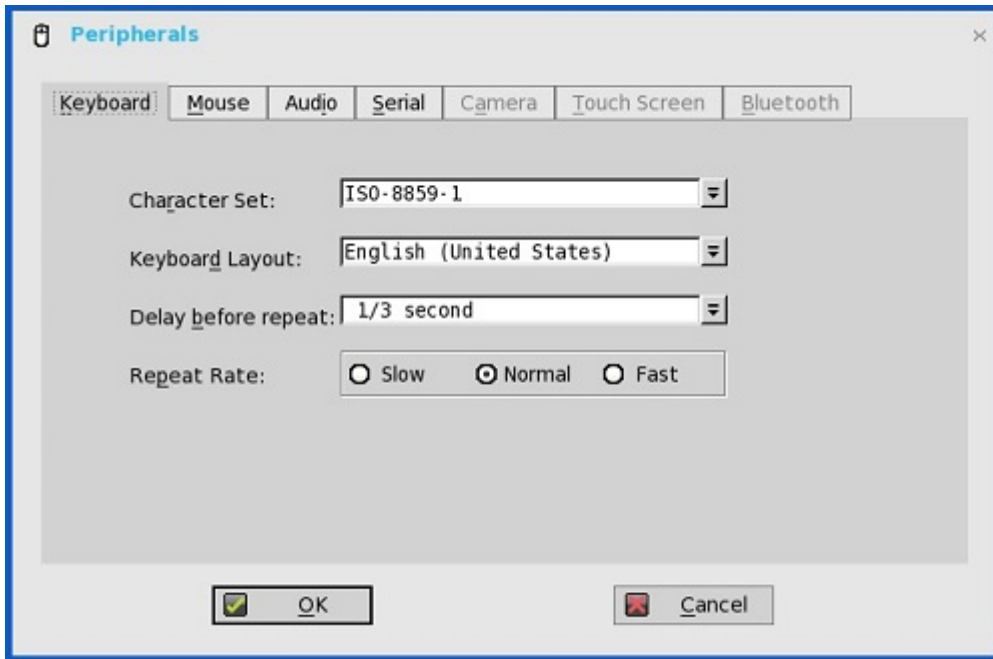
- [Configuring keyboard settings](#)
- [Configuring mouse settings](#)
- [Configuring camera settings](#)
- [Configuring printer setup](#)

### Configuring keyboard settings

To configure the Keyboard settings:

- 1 From the desktop menu, click **System Setup**, and then click **Peripherals**.

The **Peripherals** dialog box is displayed.



- 2 Click the **Keyboard** tab and set the Character Set, Keyboard Layout, Delay Before Repeat and Repeat Rate parameters. The following table explains the parameters present on the Peripherals dialog box.

**Table 1. Keyboard parameters**

Parameter	Description
Character Set	Specifies the character set. Each character is represented by a number. The ASCII character set, for example, uses the numbers 0 through 127 to represent all English characters and special control characters. European ISO character sets are similar to

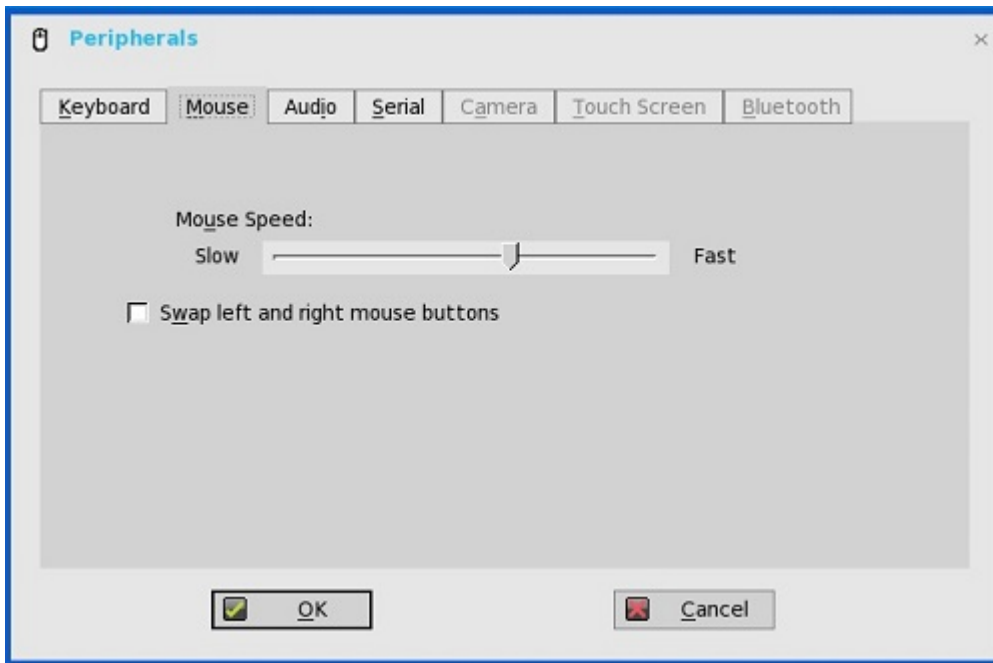
	ASCII, but they contain additional characters for European languages.
Keyboard Layout	Presently the keyboard languages listed in the <b>Keyboard layout</b> drop-down list are supported. The default value is <b>English (United States)</b> .
Delay Before Repeat	Specifies the repeat parameters for held-down key. Select the Delay before repeat value as either <b>1/5 second, 1/4 second, 1/3 second, 1/2 second, 3/4 second, 1 second, 2 seconds,</b> or <b>No Repeat</b> . The default is <b>1/3 second</b> .
Repeat Rate	Select <b>Slow, Medium,</b> or <b>Fast</b> . The default value is Medium.

- 3 Click **OK** to save the settings.

## Configuring mouse settings

To configure the mouse settings:

- 1 From the desktop menu, click **System Setup**, and then click **Peripherals**. The **Peripherals** dialog box is displayed.
- 2 Click the **Mouse** tab to select the mouse speed and mouse orientation.



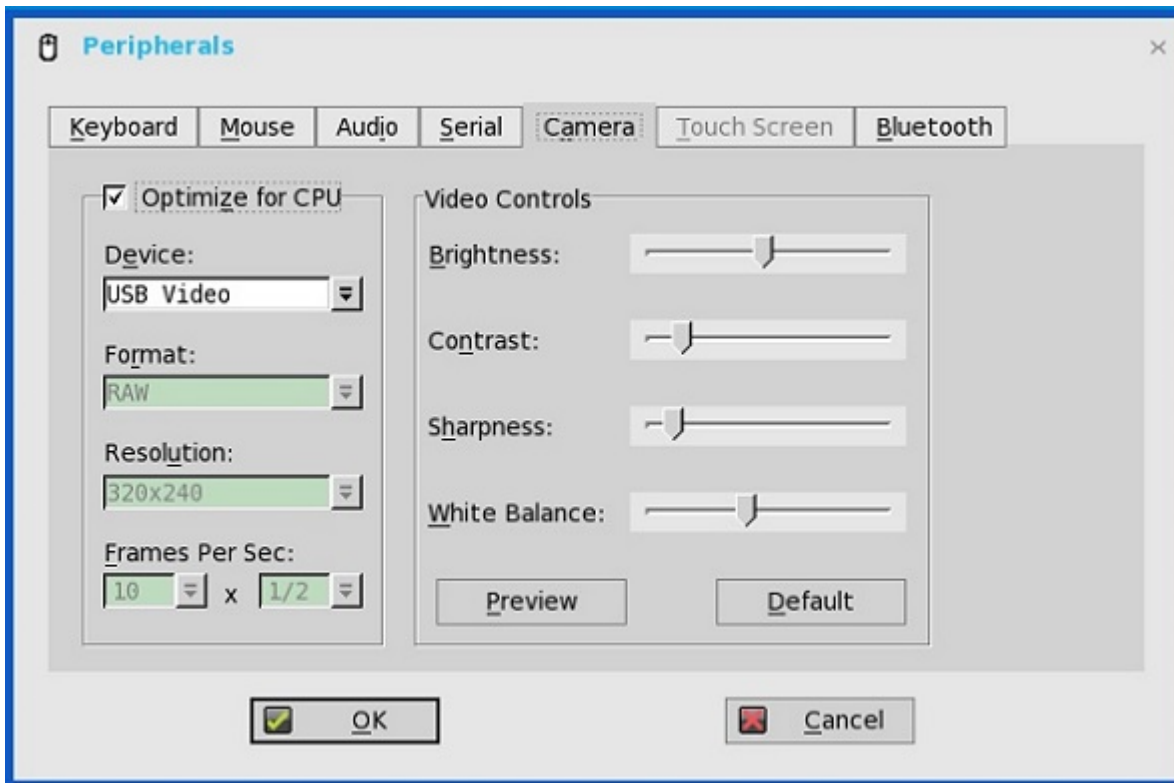
- 3 Select the **Swap left and right mouse buttons** check box to swap mouse buttons for left-handed operations.
- 4 Click **OK** to save the settings.

## Configuring camera settings

Use the **Camera** tab to interface with cameras that are locally connected to the thin client (USB) and supported by a UVC driver. When using the HDX RealTime webcam feature of XenDesktop 5 or XenApp 6, you can control options such as maximum resolution and frames per second (10 FPS is recommended).

By default, the format of USB camera is set to RAW.





**NOTE:**

You can optimize performance and modify the frame rate per second, if the **Optimize for CPU** check box is selected—supported values include 1/1, 1/2, 1/3, 1/4, 1/5, and 1/6— directly from the thin client (if the webcam supports Universal Video Driver).

This feature is experimental and does not currently support central configuration (INI parameters). Also, this feature is CPU intensive and is recommended for high performance products such as the Wyse 5010 thin client with ThinOS (D10D), Wyse 3030 LT thin client with ThinOS and Wyse 3030 LT thin client with PCoIP.

## Configuring printer settings

Use the **Printer Setup** dialog box to configure network printers and local printers that are connected to the thin client. Through its USB ports, a thin client can support multiple printers. If more than one printer is to be used and another port is not available on your thin client and the port that is to be used must be shared with a USB modem converter, connect a USB hub to the port.

## Power state

### Wyse 3040 thin client running Wyse ThinOS.

Use the Shutdown dialog box to select the available option you want:

- Classic Desktop — Click **Shutdown** in the Connect Manager or Desktop Menu.
- Zero Desktop — Click the **Shutdown** icon on the Zero Toolbar.

## Configuring the broker setup on Dell Wyse ThinOS

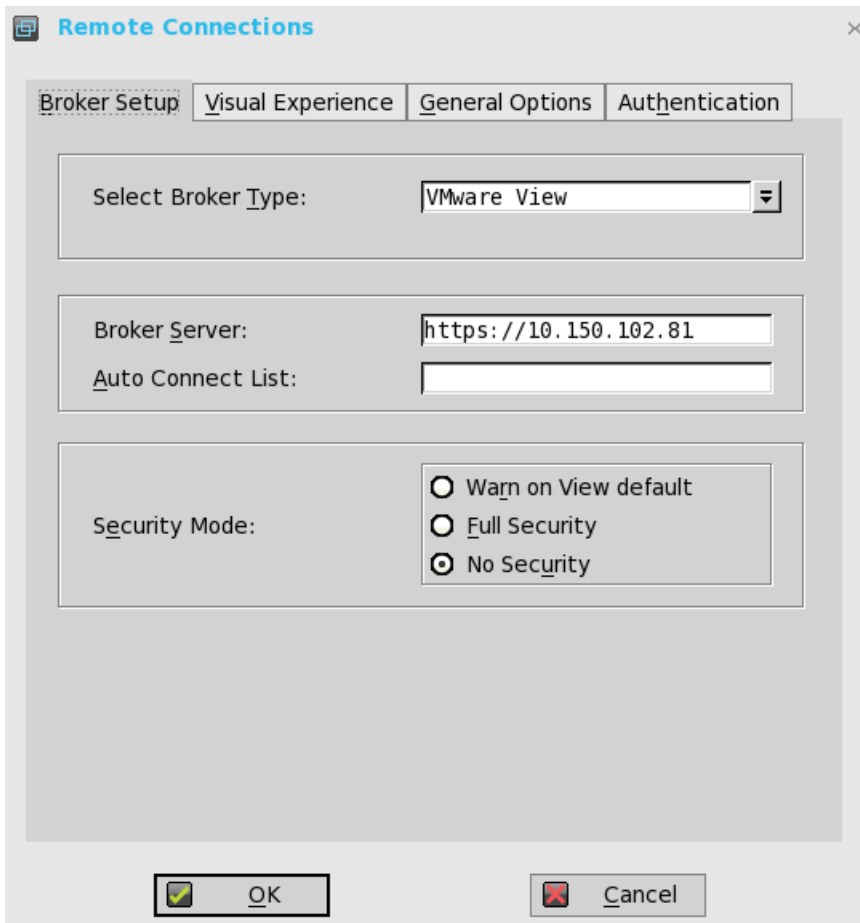
To configure the Broker setup:

- 1 From the desktop menu, click **System Setup**, and then click **Remote Connections**.





The **Remote Connections** dialog box is displayed.



2. Select **Broker type** from the drop-down list.
  - a. If you select **None** from the list, click either of the following connection protocols:
  - b. If you select the **Citrix Xen**, use the following guidelines:
    - Select the check box to enable the **StoreFront style**.
    - **Broker Server**— Enter the IP address of the Broker Server.
    - Select the check box to enable automatic reconnection at logon.
      - NOTE:** If you enable the automatic reconnection, you are able to select from the reconnection options. Click either of the options where you can connect to the disconnected sessions only or connect to both active and disconnected sessions.
    - Select the check box to enable automatic reconnection from the button menu.
      - NOTE:** If you enable the automatic reconnection, you are able to select from the reconnection options. Click either of the options where you can connect to the disconnected sessions only or connect to both active and disconnected sessions.
    - **Account Self-service Server**— Enter the IP address of the account self-service server.
    - **XenApp** — Use this option, if you want to set default settings to **XenApp**.
    - **XenDesktop**— Use this option, if you want to set default settings to **XenDesktop**.
  - c. If you select the **VMware View**, use the following guidelines:
    - **Broker Server**— Enter the IP address of the Broker server.
    - **Security Mode**
      - Use this option to select the Security Mode. The available options are **Warn on View default**, **Full security**, and **No security**.
  - d. If you select the **Microsoft**, enter the IP address of the broker server in the **Broker Server** box, and then click **OK** to save the settings.



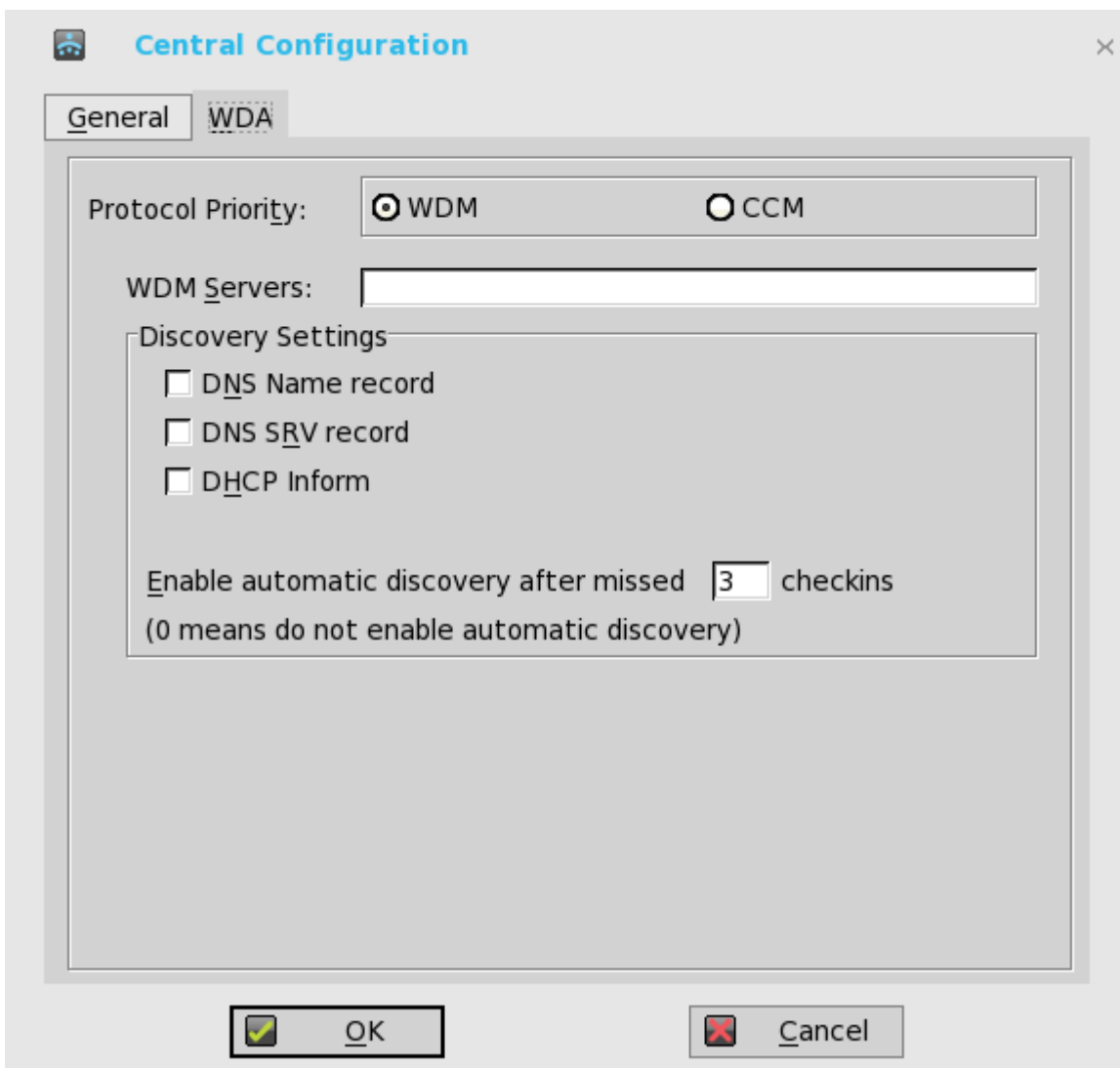
- e If you select **Dell vWorkspace**, use the following guidelines:
    - **Broker Server**— Enter the IP address of the Broker Server.
    - Select the check box to enable vWorkspace Gateway.
    - **vWorkspace Gateway**— Enter the IP address of the vWorkspace gateway.
  - f If you select **Other**, you must enter the IP address of the broker server in the **Broker Server** box.
- 3 Click **OK** to save the settings.

## Configuring the WDA settings on Dell Wyse ThinOS

Use this tab to configure the WDM and CCM settings.

To configure the WDA settings, do the following:

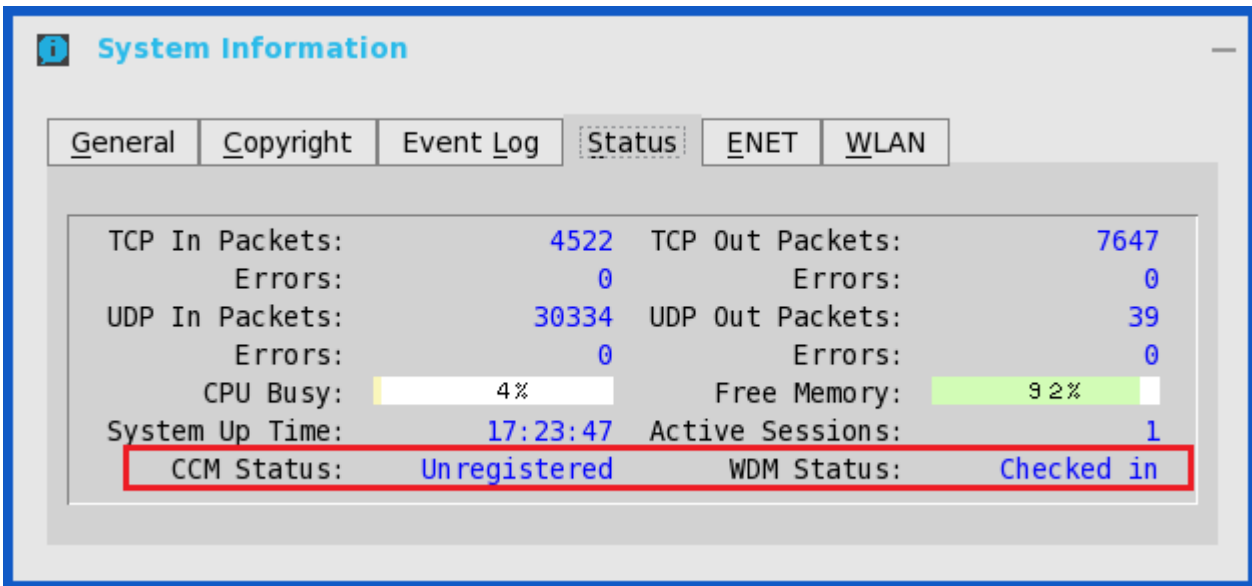
- 1 From the desktop menu, click **System Setup**, and then click **Central Configuration**.  
The **Central Configuration** dialog box is displayed.
- 2 Click **WDA**, and use the following guidelines.  
WDM is selected by default. WDA service automatically runs after the client starts up.



If the first discovery, for example, the WDM service is not successful, then it seeks for the next priority, for example, CCM service. This continues till a discovery is successful. If all discoveries fail, then it is started again automatically after a fixed time (24 hours).

- a **WDM Servers** — Enter the IP addresses or host names, if WDM is used. Locations can also be supplied through user profiles, if user INI profiles are used.
  - b **DNS Name Record** — (Dynamic Discovery) Allows devices to use the DNS host name lookup method to discover a WDM server.
  - c **DHCP Inform** — (Dynamic Discovery) Allows devices to use DHCP inform to discover a WDM Server.
  - d **Enable Automatic Discovery After Missed Check-ins** — Select the number of missed check-ins after which you want the auto discovery options enabled.
- 3 Click **OK** to save the settings.

Service checked in status is displayed in System Information.

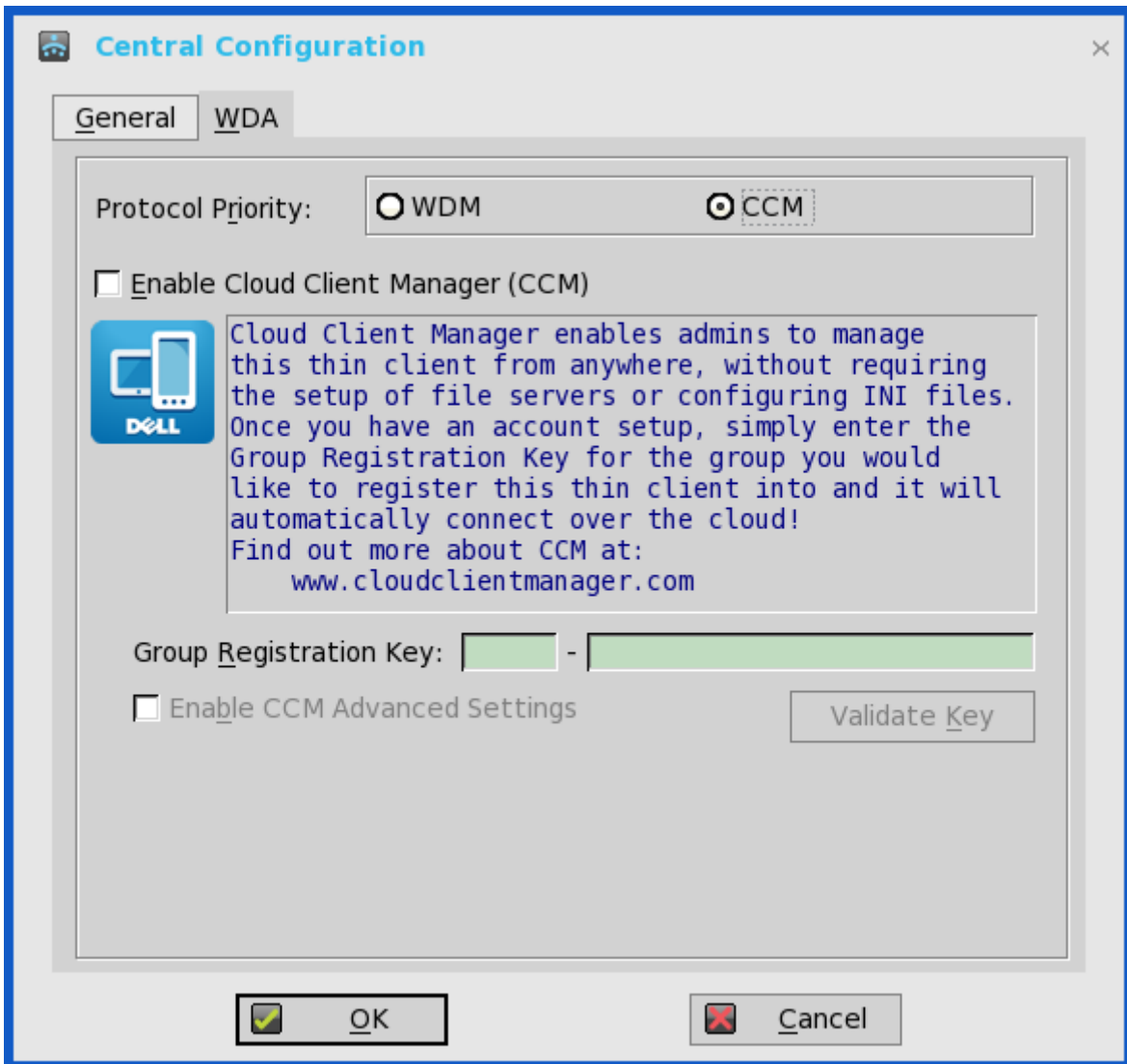


The following is the INI parameter for this feature:

```
WDAService={yes (default),no}Priority ={WDM (default),CCM,"WDM;CCM","CCM;WDM"}
```

To configure the CCM settings, do the following:

- 1 Click **CCM**, and use the following guidelines.
  - a **Enable Cloud Client Manager (CCM)** — Select the check box to enable the Cloud Client Manager(CCM).



b **Group Registration Key** — Enter the **Group Registration Key** as configured by your cloud Client Manager administrator for the desired group.

**NOTE:** If you enable the Cloud Client Manager (CCM), make sure that you have entered the Group Registration Key and enabled the CCM Advanced Settings.

2 Click **OK** to save the settings.

# Wyse 3040 thin client on ThinLinux

This section provides the instructions on how to easily configure and efficiently manage Wyse 3040 thin client that runs on ThinLinux.

Topics:

- [Accessing thin client BIOS settings on Wyse ThinLinux](#)
- [Logging on to the Wyse 3040 thin client running ThinLinux](#)
- [Configuring your display on Dell Wyse ThinLinux](#)
- [Configuring the network settings on Dell WyseThinLinux](#)
- [Configuring peripherals settings on Wyse ThinLinux](#)
- [Power state](#)
- [Configuring connections locally on Dell Wyse ThinLinux](#)
- [Configuring the WDA settings on Dell Wyse ThinLinux](#)

## Accessing thin client BIOS settings on Wyse ThinLinux

This section describes about the Wyse 3040 thin client UEFI BIOS settings.

While starting the thin client, a Dell logo is displayed for a short period.

- 1 During the start-up, press the **F2** key. and the default password is Fireport
- 2 The BIOS setting is protected by a password. When prompted, enter the password `Fireport`.  
The **BIOS** settings dialog box is displayed.
- 3 Use the System Setup settings to change the BIOS settings.

**i** **NOTE:** There is an option to restore BIOS defaults, Factory Defaults, and Custom user settings for users in BIOS menu. BIOS default setting restores the values that was part of BIOS file and, Restoring Custom User setting restores to the default settings. Restoring Factory default restores the BIOS setting to the values that was configured in factory before shipping the client.

To access the boot menu, during the start-up, press the **F12** key. Use the boot selection menu to select or view the boot sequence order as follows:

- Boot from UEFI: Hard Drive, Partition 2—Boots from the internal eMMC storage.
- Boot from IP4 Realtek PCIe GBE Family Controller—Boots from the network through PXE.
- Boot from IP6 Realtek PCIe GBE Family Controller—Boots from the network through PXE
- Boot from USB—Boots the USB storage from any of the USB ports. This option is displayed if bootable USB devices are plugged in.

## Logging on to the Wyse 3040 thin client running ThinLinux

On your initial configuration, Dell recommends that you connect by using a wired connection by plugging in the network connected ethernet cable to your thin client.



After you turn on your thin client, you are automatically logged in to the local **thinuser** account. By default, the password of the thinuser account is set to **thinuser**.

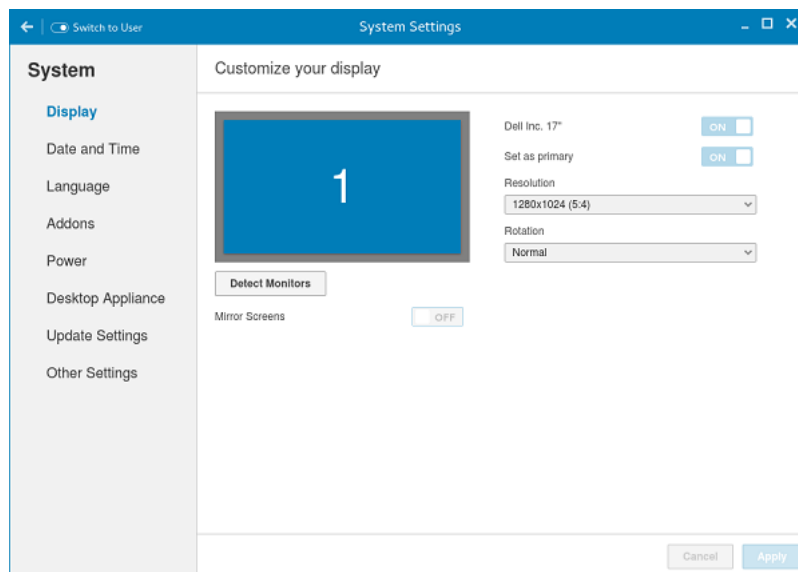
**NOTE:** In cases where a GDM login is needed (for example, AD/Domain login, PNAgent login and so on), the auto-login option can be turned off through the GUI or by using the INI.

Admin mode enables you to perform system administration tasks such as adding or removing connections and setting up specific device settings. To enter into the **Admin** mode, click the **Switch to Admin** button from **Setting application** screen to admin mode and then enter the default root password in the **Password Needed** window. The default root password is **admin**.

## Configuring your display on Dell Wyse ThinLinux

By default, the **Customize your display** screen is available in both User mode and Admin mode. Any changes to display preferences made through this screen is saved and available for the built-in thinuser. In a **Dual-monitor** configuration, if both monitors are connected, then by default, the monitors are in extended mode. The **primary monitor** is on the left (monitor 1) and the **secondary monitor** is on the right (monitor 2). The resolutions of the monitors are auto detected by the system by analyzing the monitor's capabilities.

- 1 Click the **Display** tab.  
The **Customize Your Display** page is displayed.



**Figure 1. Display Settings**

- 2 Select the preferred **Resolution** from the drop-down list.
- 3 Select the **Rotation** type from the drop-down list.
  - Normal
  - Right
  - Left
  - Upside-down
- 4 Click the **ON/OFF** button to switch between dual display and mirror mode in a dual monitor configuration.
- 5 Click the **ON/OFF** button to enable the **Set as primary** option. This option allows you to set the selected monitor as primary.
- 6 Click the **ON/OFF** button to enable the **Monitor On/Off** option. This option allows you to switch off and switch on the preferred monitor in a dual monitor configuration.

# Configuring the network settings on Dell WyseThinLinux

On the **System Settings** page, click the **Network** tab to view the **Network Settings** page.

- 1 Click the **Network** icon.

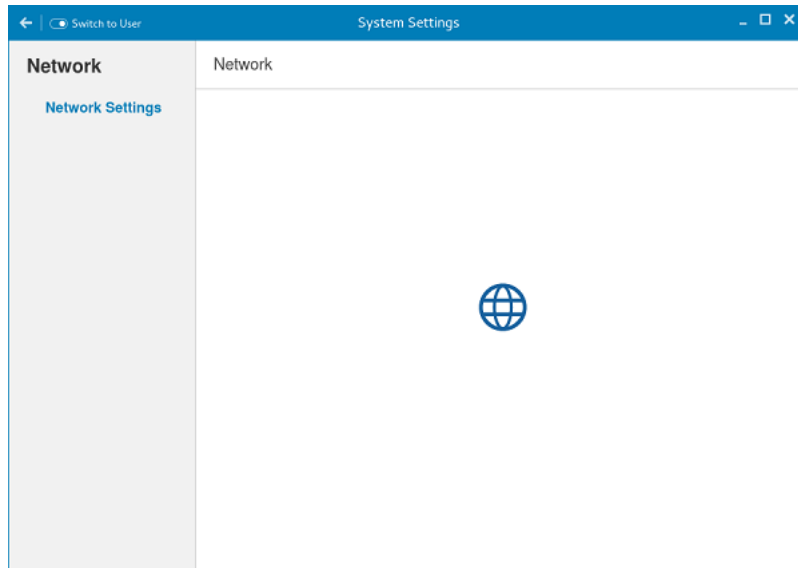


Figure 2. Network Settings

- 2 The **Network settings** page is displayed. In the left-pane, the following tabs are available for you to configure.
  - Wi-Fi
  - Wired
  - Network proxy

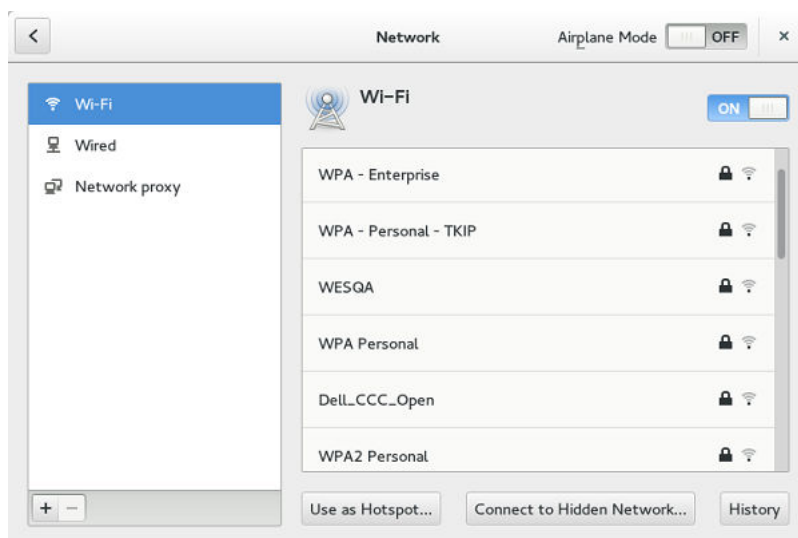
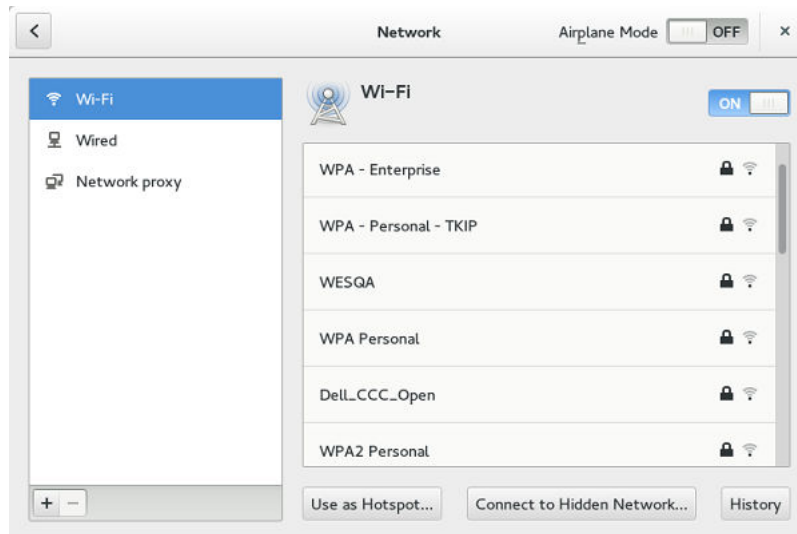


Figure 3. Network Settings page

# Configuring the wi-fi settings

To configure the Wi-Fi settings, perform the following steps:

- 1 In the left-pane, click **Wi-Fi** tab.
- 2 Click the **ON/OFF** button to enable or disable the Wi-Fi option. The list of wireless SSID is displayed if broadcast is enabled.



**Figure 4. Wi-Fi Settings**

- 3 To connect to Wi-Fi connection, select the preferred wireless SSID from the list displayed.
- 4 Click the **Connect to Hidden Wi-Fi Network** button. The Connect to Hidden Wi-Fi Network window is displayed.



**Figure 5. Hidden Wi-Fi Network**

- 5 Enter the name and security details of the hidden network that you want to connect to.

**Table 2. Hidden network**

Parameter	Description
Connection	From the drop-down list, select the type of connection.
Network name	Enter the preferred network name.
Wi-Fi security	From the drop-down list, select the security type.



- 6 On the **Network** page, click the **History** button to view the previous Wi-Fi connections and details.

## Configuring wired network connection settings

To configure the wired connection settings, perform the following steps:

- 1 Click the **Wired** tab. The following attributes are displayed if the network cable is connected to your thin client and wired connection is established.
  - IP Address
  - Hardware Address
  - Default Route
  - DNS

**NOTE:** After the network is disconnected, only hardware address and last used information are displayed.

- 2 On the lower-right corner of the page, click the **Settings** icon to configure the Wired Network connections.
  - a In the **Details** tab, the following attributes are displayed.
    - IP Address
    - Link Speed
    - Hardware Address
    - Default Route
    - DNS
- 3 Click the **Security** tab to configure the 802.1x security settings.
  - a Click the **ON** button to enable the 802.1x Security for your network connection.
  - b From the **Authentication** drop-down list, select the type of authentication you want to set for your network connection. The available options are:
    - TLS
    - Protected EAP (PEAP)

You must configure TLS and PEAP using the INI parameters only. Options that you configure using the INI parameters are populated on the UI screen. For more information about the usage of INI parameters, see Dell Wyse ThinLinux INI Reference Guide.

**NOTE:** You cannot configure the 802.1x authentication settings using the GUI options.

- 4 Click the **Identity** tab and configure the following settings:

**NOTE:** Only Administrators are allowed to authenticate these settings by entering the admin password in the root privilege authentication dialog box after a particular setting is changed or configured.

- a **Name**—Specifies the default name of the wired connection. If you want to set your preferred name for the connection, enter the name and then click **Apply**.
  - b **MAC Address**—Specifies the MAC address of the network connection.
  - c **Cloned Address**—Specifies the IP address that is cloned by the router.
  - d **Maximum transmission unit (MTU)**—Specifies the size (in bytes) of the largest protocol data unit that the protocol layer can pass onwards.
  - e **Firewall Zone**—Specifies the security level of the connection.
  - f **Connect automatically**— Select this check box to automatically connect to the network after you plug-in the network wire.
  - g **Make available to other users**— Select this check box if you want to allow other users to configure these settings.
- 5 Click the **IPv4** tab and do the following:
    - a Enable the **IPv4** button to configure the IPv4 settings.
    - b From the **Addresses** drop-down menu, select the type of IPv4 configuration. The available options are:
      - Automatic (DHCP)
      - Manual



- Link-Local Only
- c If **Automatic (DHCP)** option is selected, you must configure the following options.

**Table 3. Automatic (DHCP)**

Parameter	Description
DNS	Enable the <b>Automatic</b> button, if you want the thin client to automatically fetch the DNS Server.
Server	Specifies the IP address of the DNS Server.  Click the <b>+</b> icon to add a new DNS server to the list.
Routes	Enable the <b>Automatic</b> button to turn on the automatic IPv4 routing.
Address	Specifies the Router IP address.
Netmask	Specifies the Netmask. Netmask is used to divide an IP address into subnets and specify the network's available hosts.
Gateway	Specifies the IP address of the default Gateway.
Metric	Specifies the Metric value for the network connection.
Use this connection only for resources on its network	Select this check box, if you want to allow the wired connection only for resources on its network.

- d If **Manual option** is selected, you must specify the IP address, Netmask IP and Gateway IP along with the parameters mentioned in the Automatic (DHCP) table.
- e If **Link-Local Only** option is selected, the DNS and Routes options are disabled. This is applicable only for communications within the host link or the host domain.
- 6 Click the **IPv6** tab and do the following:
- Enable the **IPv6** button to configure the IPv6 settings.
  - From the **Addresses** drop-down menu, select the type of IPv6 configuration. The available options are:
    - Automatic
    - Automatic, DHCP only
    - Manual
    - Link-Local Only

The IPv6 configuration is similar to configuring the IPv4 Settings. For IPv4 configuration, see the IPv4 settings in this section.

- 7 Click the **Reset** tab and do the following:
- Click **Reset** to reset the settings for your network connection, including passwords. However, the previous network is displayed as a preferred network.
  - Click **Forget** to remove all details relating to this network that you do not want to automatically connect to.
- 8 Click **Apply** to save your configured settings.

**NOTE:** Click the **Add Profile** tab to add a new network profile. On the right pane, you must configure the following options:

- Security
- Identity
- IPv4
- IPv6

The configuration of all these tabs are similar to **Wired Network connections configurations** described in this section.



# Configuring the network proxy settings

To configure the Network proxy settings, complete the following task:

- 1 Click the **Network proxy** tab.
- 2 From the Proxy drop-down menu, select the type of Proxy method you want to deploy. The available Proxy methods are:
  - None
  - Manual
  - Automatic
- 3 If **Manual proxy** method is selected, you must configure the following options:
  - a Enter the **HTTP Proxy** port details for your network connection.
  - b Enter the **HTTPS Proxy** port details for your network connection.
  - c Enter the **FTP Proxy** port details for your network connection.
  - d Enter the **SOCKS host** port details for your network connection.
  - e Use the **Ignore Hosts** option to set up proxy to ignore all local addresses.
- 4 If **Automatic proxy** method is selected, you must type the configuration URL address in the field.

**NOTE:** Web Proxy Autodiscovery is used when a Configuration URL is not provided. Dell does not recommend this option for untrusted public networks.

# Adding a network connection

**NOTE:** Adding additional wired Ethernet connections is allowed but the added interface is not used in any of the ThinLinux features.

To add a new network connection, complete the following tasks:


- 1 On the lower-left corner of the page, click the **+** icon.  
The **Add Network Connection** dialog box is displayed. The following options are listed for you to configure.
  - VPN
  - Bond
  - Team
  - Bridge
  - VLAN
- 2 Click **VPN** to add a VPN network connection. You must import a file from the stored location to configure the VPN settings.
- 3 Click **Bond** to add and configure the Bond network connection for your thin client.
  - a Click the **General tab**, and configure the following options:
    - Select any of the following check boxes based on your requirement:
      - Automatically connect to this network when it is available.
      - All users may connect to this network.
      - Automatically connect to VPN when using this connection.
    - From the drop-down menu, select the firewall zone.
  - b Click the **Bond** tab, and configure the following options:
    - 1 Type a name for your network interface.
    - 2 The number of bonded connections that are set up are listed here. To add a new bond connection, click the **Add** button and select the type of connection you want to create. The available options are Ethernet, InfiniBand, Bond, Bridge, Team, and VLAN.
    - 3 Select the type of Network Mode from the drop-down list. The available options are:



- Round-robin
  - Active Backup
  - XOR
  - Broadcast
  - 802.3ad
  - Adaptive transmit load balancing
  - Adaptive load balancing
- 4 **Link Monitoring** — Select the type of link monitoring from the drop-down list. The available options are:
- MII (recommended)
  - ARP
- 5 Enter the time in ms for the link up delay duration.
- 6 Enter the time in ms for the link down delay duration.
- c Click the **IPv4 Settings** tab, and do the following:
- 1 From the drop-down list select the following method for IPv4 authentication.
    - If **Automatic (DHCP)** method is selected, you must configure the following options:
      - 1 Additional DNS Servers — Type the IP addresses of domain name users that are used to resolve host names. Use commas to separate multiple domain name server addresses.
      - 2 Additional Search Domains — Type the IP addresses of domains used when resolving host names. Use commas to separate multiple domains.
      - 3 DHCP client ID — Enter the ID for the DHCP client. This client identifier allows the network administrator to customize your computer's configuration.
      - 4 Require IPv4 addressing for this connection to complete — The IPv4 address is required to complete the connection. If the IPv4 address is not available, then the connection is not configured.
      - 5 Click the **Routes** button to edit IPv4 routes for Bond connection.
        - a Click **Add** to add an IP address. After an IP is added, Netmask, Gateway and Metric specific to that IP are displayed.
        - b Select the check box if you want to ignore the automatically obtained routes.
        - c Select this check box if you want to use your connection only for resources on that particular network.
    - If **Automatic (DHCP) addresses only** method is selected, you must configure the following options:
      - 1 DNS Servers — Type the IP addresses of domain name users that are used to resolve host names. Use commas to separate multiple domain name server addresses.
      - 2 Search domains — Type the IP addresses of domains that are used when resolving host names. Use commas to separate multiple domains.
      - 3 DHCP client ID — Enter the ID for the DHCP client. This client identifier allows you to customize your computer's configuration.

 **NOTE: The other settings remain same as described in automatic (DHCP) method for IPv4 authentication.**

- If **Manual** method is selected, you must configure the following options:
  - 1 Click **Add** to add an IP address. After an IP is added, Netmask, Gateway specific to that IP are displayed.
  - 2 DNS Servers — Type the IP addresses of domain name users that are used to resolve host names. Use commas to separate multiple domain name server addresses.
  - 3 Search domains — Type the IP addresses of domains used when resolving host names. Use commas to separate multiple domains.

 **NOTE: The DHCP client ID option and Ignore automatically obtained routes check boxes are disabled.**  
The other settings remains the same as described in automatic (DHCP) method for IPv4 authentication.

- If **Link-Local Only** method is selected, the DNS Servers, Search domains, DHCP client ID, and Routes options are disabled. You can select the **Require IPv4 addressing for this connection to complete** check box to allow the connection to complete. The IPv4 address is required to complete the connection. If the IPv4 address is not available, then the connection is not configured.
  - If **Shared to other computers** method is selected, the DNS Servers, Search domains, DHCP client ID, and Routes options are disabled. You can select the **Require IPv4 addressing for this connection to complete** check box to allow the connection to complete. The IPv4 address is required to complete the connection. If the IPv4 address is not available, then the connection is not configured.
  - If **Disabled** option is selected, IPv4 is not available for this connection.
- d Click the **IPv6 Settings** tab. From the drop-down list, select the following method type for IPv4 authentication. The available options are:
- Ignore
  - Automatic
  - Automatic, addresses only
  - Manual
  - Link-Local Only

 **NOTE:** The settings are same as configuring the IPv4 settings tab described in this section.

- 4 Click **Team** to add and configure the team network connection for your thin client.
- a Click the **Team** tab, and configure the following options:
    - 1 Interface name—Type the name of your network interface.
    - 2 MTU—Specifies the size (in bytes) of the largest protocol data unit that the protocol layer can pass onwards.
    - 3 Teamed connections—Lists the number of team connections that are configured. To add a new team connection, click **Add** and select the type of connection you want to create. The available options are Ethernet, Bond, Bridge, Team, and VLAN.
    - 4 JSON config— If you have already added a new team connection, you can enter a custom JSON configuration string in the text box or import a configuration file.
  - b To configure the **General** tab, **IPv4 Settings** tab, and **IPv6 Settings** tab for team connection, see the configuration details for Bond connection in this section.
- 5 Click **Bridge** to add and configure the bridge network connection for your thin client.
- a Click the **Bridge** tab, and configure the following options:
    - 1 Interface name — Type the name for your network interface.
    - 2 Bridged connections — The number of bonded connections that are set up are listed here. To add a new bond connection, click the Add button and select the type of connection you want to create. The available options are Ethernet, Wi-Fi, and VLAN.
    - 3 Aging time — Enter the Aging time duration in seconds.
    - 4 Enable IGMP snooping—Select this check box to monitor Internet Group Management Protocol (IGMP) communications among devices.
    - 5 Enable STP — Select this check box to enable the Spanning Tree Protocol (STP) for your connection.
    - 6 Priority — Enter the priority value.
    - 7 Forward delay — Enter the forward delay duration in seconds.
    - 8 Hello time — Enter the hello time duration in seconds.
    - 9 Max age — Enter the value for the maximum age.
  - b To configure the **General** tab, **IPv4 Settings** tab, and **IPv6 Settings** tab for Bridge connection, see the configuration details for Bond connection in this section.
- 6 Click **VLAN** to add and configure the VLAN network connection for your thin client.
- a Click the **VLAN** tab, and configure the following options:
    - 1 Parent interface — Type the name for your parent interface.
    - 2 VLAN ID — Enter the value for the VLAN id.
    - 3 VLAN interface name — Type the name for your VLAN interface.



- 4 Cloned MAC address — Type the cloned MAC address.
  - 5 MTU —Specifies the size (in bytes) of the largest protocol data unit that the protocol layer can pass onwards.
  - 6 Flags—Select the Reorder headers, Generic VLAN Registration Protocol (GVRP), Loose binding, and Multiple VLAN Registration Protocol (MVRP) check boxes to enable the respective functions for your VLAN connection.
  - b To configure the **General** tab, **IPv4 Settings** tab, and **IPv6 Settings** tab for VLAN connection, see the configuration details for Bond connection in this section.
- 7 Click **Save** to save your settings.

## Configuring peripherals settings on Wyse ThinLinux

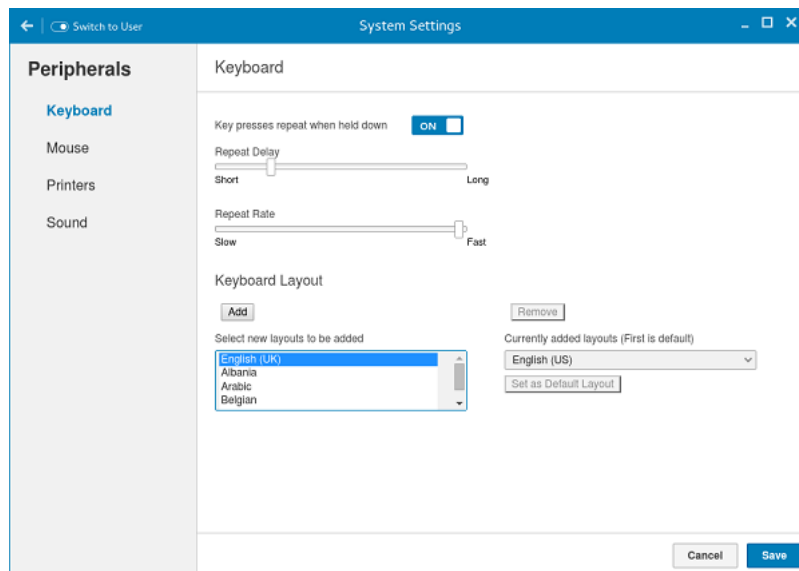
On the **System Settings** page, click the **Peripherals** icon. The following tabs are displayed on the left pane of the System Settings page.

- Keyboard
- Mouse
- Printers
- Sound

## Setting the keyboard preferences

The **Keyboard** setting page enables you to set the Keyboard preferences and make the Keyboard layout.

**NOTE:** By default, the Keyboard screen is available in both User mode and Admin mode. Any changes made through Keyboard preferences screen is saved and continued for the built-in thinuser



**Figure 6. Keyboard Preferences**

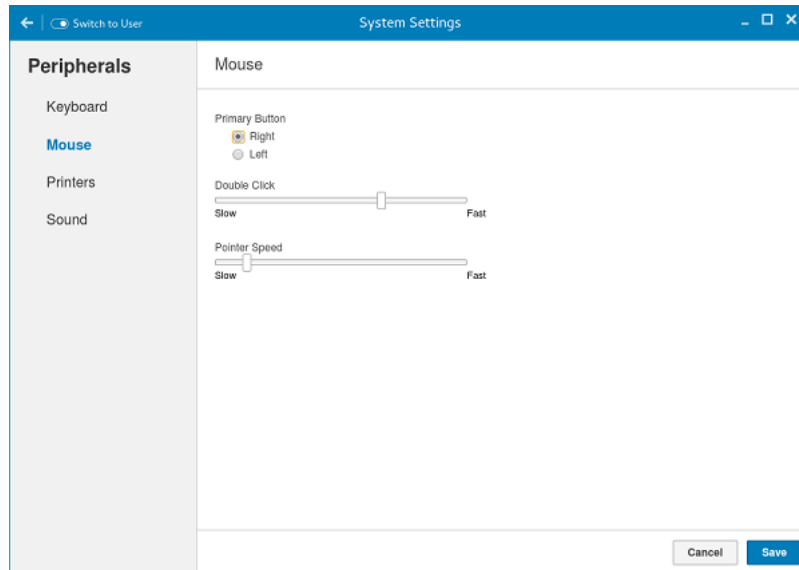
- 1 Click the **ON/OFF** button to disable or enable the **Key presses repeat when held down** option after you log in to the session.
- 2 Move the slider to the left to decrease the repeated delay time of the pointer or move the slider to the right to increase the repeated delay time of the pointer.
- 3 Move the slider to the left to decrease the repeat rate of the pointer or move the slider to the right to increase the repeat rate of the pointer.
- 4 In the **keyboard layout** box, select the layout you want to use and click **Add** to include the preferred layout in the **currently added layouts** list.
- 5 Select the preferred keyboard layout from the currently added layouts list, and click **Set as Default Layout** button to set the default layout.

**NOTE:** The default keyboard layout is listed on the top of the currently added layout list.

- 6 Click **Save** to save your changes.

## Setting the mouse preferences

By default, the **Mouse** screen is available in both User mode and Admin mode. Any changes made through the Mouse preferences screen is saved and continued for the built-in thinuser.



**Figure 7. Mouse Preferences**

The Mouse setting page enables you to set the Mouse preferences.

- 1 Click **Right** or **Left** to set the **primary button** of the mouse.
- 2 Move the slider to the left to increase the speed of the pointer when double-clicked or move the slider to the right to decrease the length of double-clicked.
- 3 Move the slider to the left to increase the speed of the mouse pointer or move the slider to the right to decrease the speed of the mouse pointer.
- 4 Click **Save** to save your changes.

## Configuring the printer settings

By default, the **Printers** screen is available only in Admin mode. On the **Printer setting** page, click the printer icon to start the **gnome-control-center printer**.

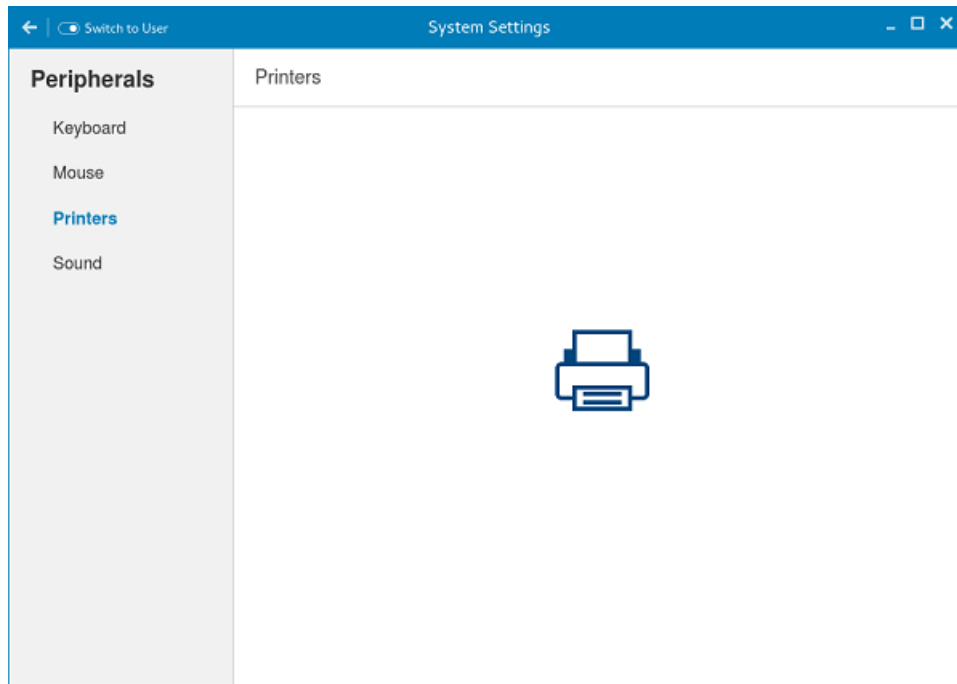


Figure 8. Printer Settings

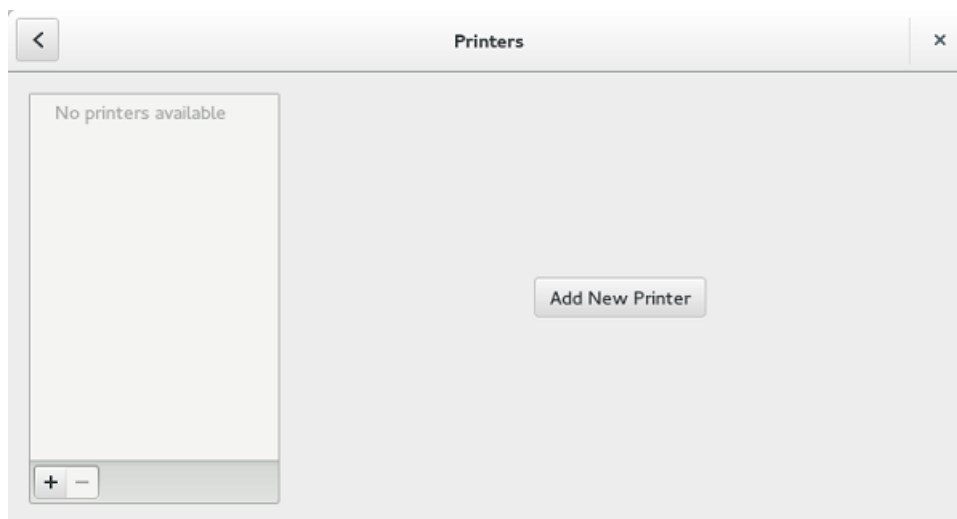


Figure 9. Add New Printer

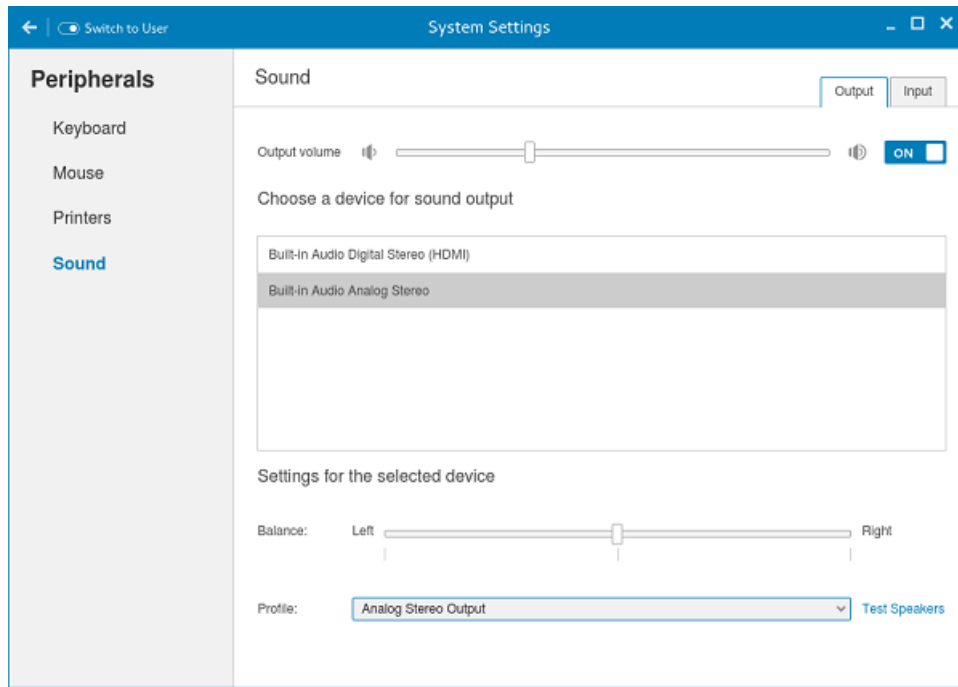
- 1 Click the printer icon.  
The **gnome-control-center printer** dialog box is displayed.
- 2 Click **Add New Printer** button to include the new printer in the printers list available on the left pane.  
The **Add a new printer** window is displayed.
- 3 Enter the address of the printer or the text to filter results.  
**(i) NOTE: If a USB printer is connected, then it is displayed by default. The printer is not found if wrong address is provided or the USB is not attached.**
- 4 Click the **Add** option. Click **Print Test Page** to test the printer and click **(-)** icon to remove the printer.



# Configuring the sound settings

By default, the Sound screen is available in both User mode and Admin mode. Any changes made through Sound screen is saved and retained for the built-in thinuser.

- 1 Click the **Output** tab to configure the audio output settings.



**Figure 10. Sound Settings**

- a Move the Output volume slider to adjust the output or speaker volume. Click the **Output volume** button to enable or disable the output volume.
  - b Select the device for sound output from the listed output devices. The default audio output is the Analog Output.
  - c Based on the channels available for the selected output device and profile, you can adjust the Balance and Fade values by moving Balance and Fade sliders respectively.
  - d Select the audio profile from the drop-down list.
  - e Click the **Test Speakers** option. A dialog box is displayed. You can perform the speaker testing by playing sample wave files.
- 2 Click the **Input** tab to configure the audio input settings.

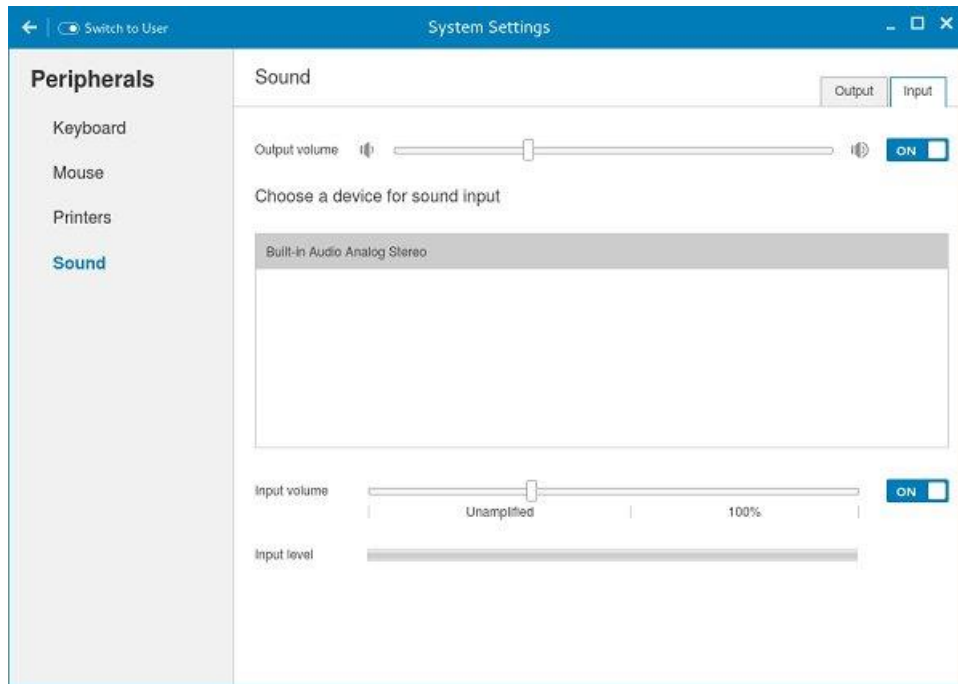


Figure 11. Sound Settings

- Move the Output volume slider to adjust the output or speaker volume. Click the **Output volume** option to enable or disable the output volume.
- Select the device for sound input from the listed input devices. The default audio input is the Analog input.
- Move the **Input Volume** slider to adjust the input or Mic volume. Click the **Input volume** option to enable or disable the input volume.
- The Input level meter bar shows the input volume peak level.

## Power state

### Wyse 3040 thin client running Wyse ThinLinux

On your initial configuration, Dell recommends that you connect by using a wired connection by plugging in the network connected Ethernet cable to your thin client.

After you turn on your thin client, you are automatically logged in to the thinuser account. By default, the password of the thinuser account is set to **thinuser**.

**NOTE:** In cases where a GDM login is needed (for example, AD/Domain login, the PNAgent login, and so on), the autologin option can be turned off through the GUI or by using the INI.

Admin mode enables you to perform system administration tasks such as adding or removing connections and setting up specific device settings. To enter into the Admin mode, click the **Switch to Admin** button from Setting application screen to admin mode and then enter the default root password in the **Password Needed** window. The default root password is **admin**.

## Configuring connections locally on Dell Wyse ThinLinux

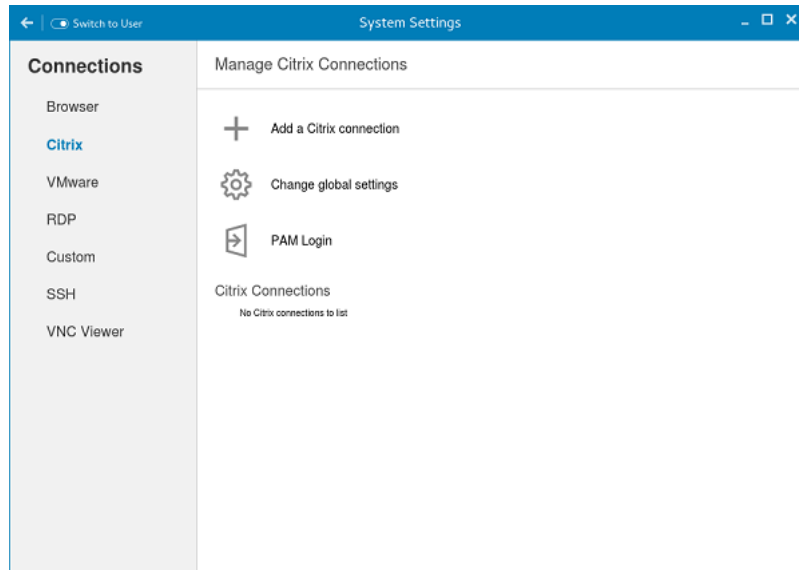
On the **System Settings** page, click the **Connections** icon. The Connections page contains the following tabs:

- Citrix
- VMware

**NOTE:** The description names for all the connections can not be edited once you create the connection.

## Configuring and managing Citrix connections

The **Citrix Connections** page enables you to create and manage the Citrix connections both locally and globally.



**Figure 12. Citrix connection settings**

To configure the local **Citrix** settings:

- 1 Click the **+** icon to add a new **Citrix Connection**.  
The **Citrix Connections** page is displayed.
- 2 Enter the name of the **Citrix connection** for which you specify the Server URL address.
- 3 From the **Connection Type** drop-down list, select any of the following connection types:
  - Server
  - Published Application
  - Storefront
- 4 Click **Save** to save the changes.

## Configuring and managing VMware connections

The **VMware connections** page enables you to create and manage the View client 3.5 connections.

To configure the VMware Settings, complete the following task:

- 1 Click the **+** icon to add a new VMware Connection.

The **VMware Connections** page is displayed.

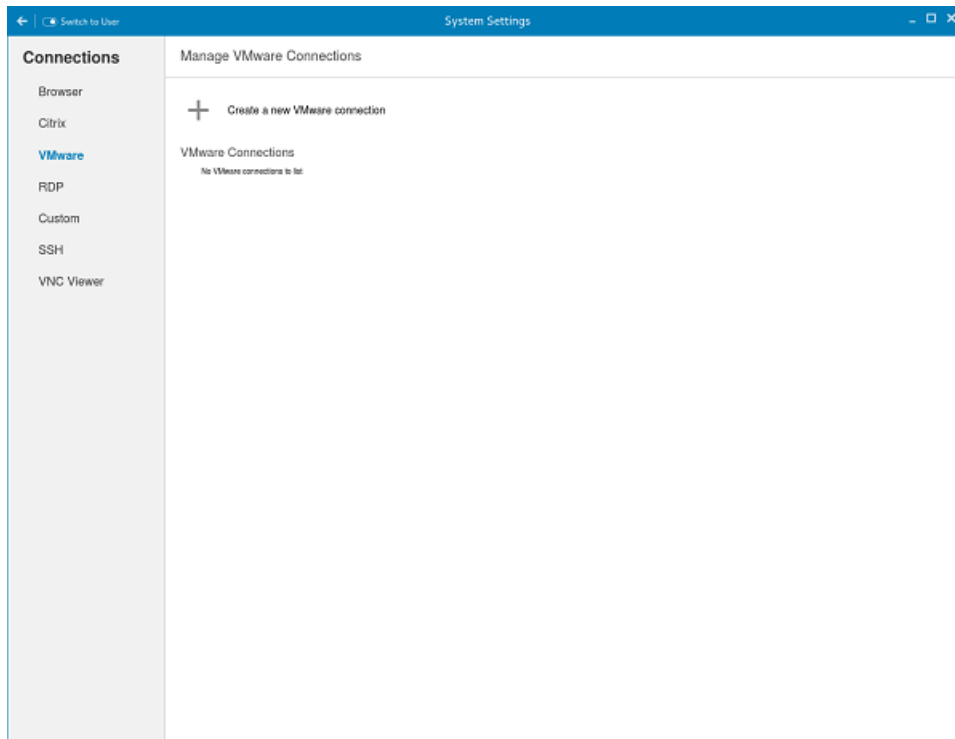


Figure 13. VMware connections settings

- 2 Enter the name of the **VMware connection**.
- 3 Configure the following options in the **Login** tab:

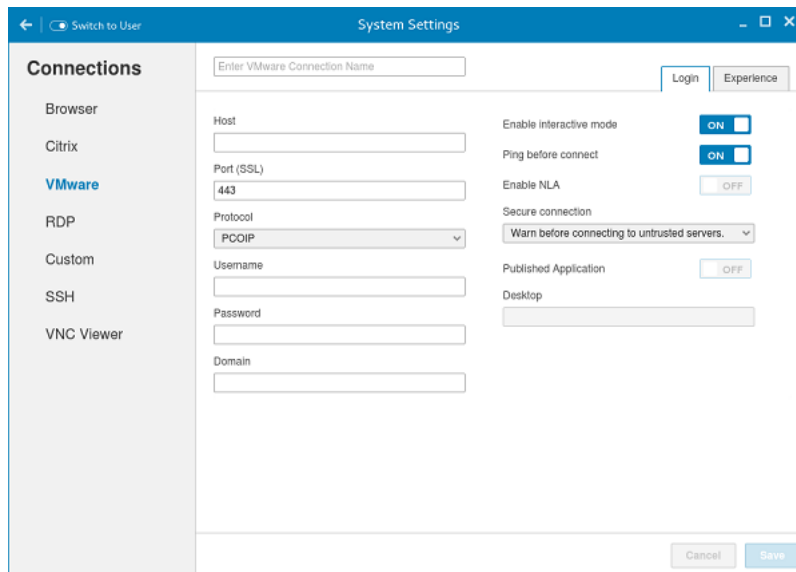


Figure 14. VMware login settings

**Table 4. Login parameters**

Parameter	Description
Host	Enter the host name or <b>IP address</b> or <b>FQDN</b> of the Horizon of the VMware View Server.
Port	Enter the port number of the host.
Protocol	From the drop-down list, select the specific protocol.
Username	Enter the User ID that is used to log in to the remote Horizon server.
Password	Enter the password that is used to log in to the remote Horizon server.
Published Application	Click the <b>ON/OFF</b> button to enable or disable this option.  If enabled, specify the Published Application name.  If disabled, specify the Published desktop name.
Enable interactive mode	Click the <b>ON/OFF</b> button to enable or disable this option.  If enabled, then after a successful connection to the server, it displays all the published application and desktop icons. You can start the applications or desktop sessions based on your choice.  If disabled, then the Published Applications option is enabled in the Login tab.  Selecting that option enables you to directly start the application or desktop that you specify.
Ping before connect	Click the <b>ON/OFF</b> button to enable or disable this option. If enabled, it pings the connection is checked in server IP/FQDN before connecting to a session.
Enable NLA	Click the <b>ON/OFF</b> button to enable or disable this option. Enable the Network Level Authentication (NLA), if NLA is enabled on your remote computer. Your remote computer requires NLA user authentication before you establish a full Remote Desktop connection and the login screen is displayed.
Secure connection	Click the Secure Preferences tab and select any of the options that determine how the client should proceed when it cannot verify that your connection to the server is secure.
Domain	Enter the Domain name. It is used to log in the remote Horizon server.
Desktop	If interactive mode is disabled, you can specify Published desktop name.
Application	If interactive mode is disabled, you can specify the Published application name.

4 The following options must be configured in the **Experience** tab:



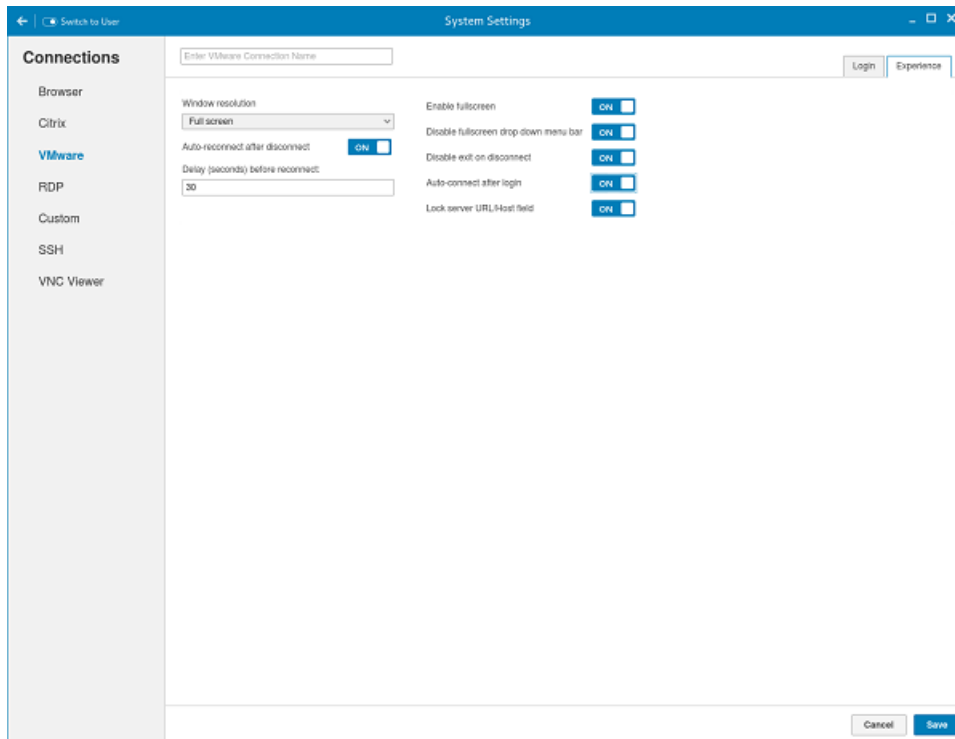


Figure 15. VMware experience settings

Table 5. Experience setting parameters

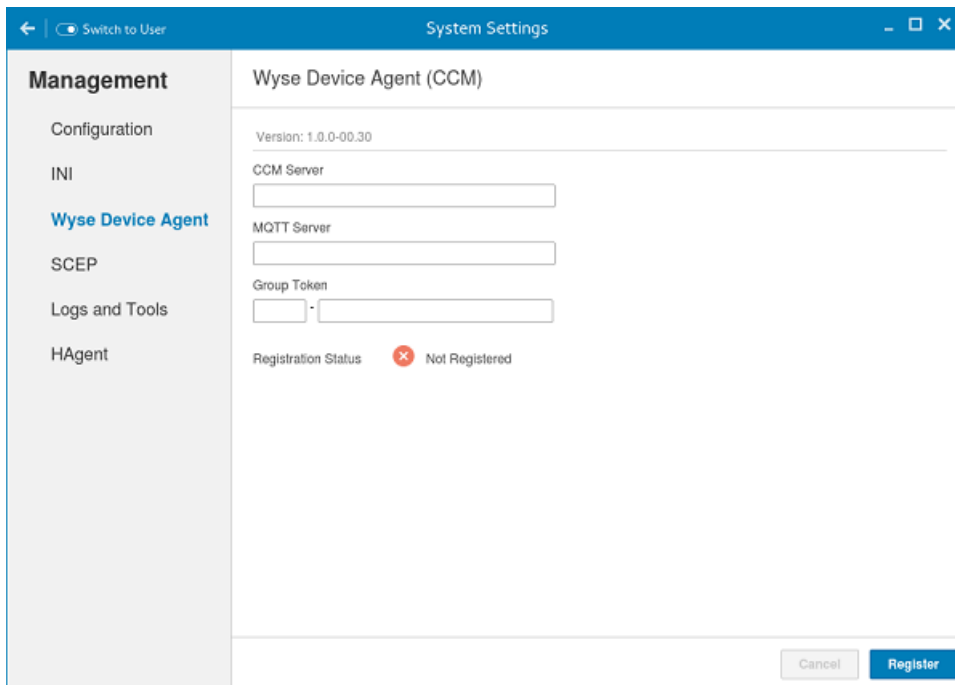
Parameter	Description
Windows resolution	Select the Windows resolution that you want to get the best display on your monitor. The available resolutions are:  Use All Monitors  Full Screen  Large Screen  Small Screen  1024X768  800X600  640X480
Auto-Reconnect after disconnect.	Click the <b>ON/OFF</b> button to enable or disable this option. If enabled, the connection is automatically re-established after you disconnect from the session.
Delay (seconds) before reconnect.	Select the amount of time in seconds to delay the reconnection attempt after a disconnection occurs.
Enable fullscreen	Click the <b>ON/OFF</b> button to enable or disable this option. Select this option to view the remote session in full screen mode in all the monitors.

Parameter	Description
Disable fullscreen drop-down menu bar	Click the <b>ON/OFF</b> button to enable or disable this option.  Select this option to disable the drop-down menu bar in the full screen mode.
Disable exit on the disconnect	Click the <b>ON/OFF</b> button to enable or disable this option.  Select this option if you do not want the Horizon server to retry connecting if there is a connection error. You can typically select this option if you use kiosk mode.
Auto-connect after login.	Click the <b>ON/OFF</b> button to enable or disable this option.  Select this option to reconnect automatically after a disconnection occurs.
Lock server URL/Host field	Click the <b>ON/OFF</b> button to enable or disable this option.

5 Click **Save** to save the settings.

## Configuring the WDA settings on Dell Wyse ThinLinux

The Wyse Device Agent (WDA) on the ThinLinux device supports only the features of Cloud Client Manager (CCM) device management solution. Wyse Device Agent is for configuring the CCM (Cloud Client Manager) client settings and registering a ThinLinux device into CCM and it is available only for admin user.



**Figure 16. Wyse Device Agent (CCM)**

If the device is not registered to a CCM server, the **Wyse Device Agent** screen shows the registration status as **Not Registered**.

- 1 In the **CCM Server** input box, enter the URL of CCM server you want to connect to.
- 2 In the **MQTT Server** input box, enter the IP address or hostname of Message Queue Telemetry Transport (MQTT) server.
- 3 In the Group Token input boxes, enter your group registration key to manage your ThinLinux device. This is a unique key for registering your thin client device. Thin clients can be directly registered to Groups directly and must have a Group Registration Key enabled to perform this action.



4 Do one of the following options:

- Click **Register** to register your thin client on CCM server. When your thin client is successfully registered, the status is shown as Registered with green color icon next to the Registration Status label, and caption of Register button changes to Unregister.
- Click **Unregister**, if you want to remove your thin client from the CCM management system. If Unregister fails, a dialog box for Force Unregister confirmation is displayed. Click **Yes** to forcefully unregister your device which is managed by CCM. When you perform Register or Unregister or Force Unregister from Agent screen, the applet should not be closed until Registration Status. After successful registration, you can access the CCM management server screen where you can view and manage Device Asset Details, Real-Time commands, and Troubleshooting information of your registered thin client.

#### Directing the Thin Client to CCM Server:

- To direct your thin client to CCM server, you must provide CCM/MQTT server details and Group registration Key. These details is discovered by Wyse Device Agent using any of the following ways:
  - DHCP Scope options
  - Using INI parameter
  - Using the Wyse Device Agent screen
- Directing the thin client to CCM Server using DHCP Scope options. The CCM/MQTT server details and Group Registration Key that are required for CCM registration can be obtained by querying the DHCP server with following option tags:
  - 199 – Scope option for Group Token (type = String, value = CCM-group-key).
  - 165 – Scope option for CCM server.
  - 166 – Scope option for MQTT server.
- Directing the thin client to CCM Server using INI parameters, INI syntax for CCM configuration:
  - CCMEnable={yes,no} CCMServer=<CCM Server URL> GroupRegistrationKey=<tenant code-group code>  
MQTTServer=<MQTT server>[:<MQTT port>]

#### NOTE:

When INI discovery method is used for registering the device, if you want to unregister the device, you must delete the INI parameters and restart the device first and then unregister the device. Else you have to perform the unregister process twice. For more information, see *ThinLinux INI Guide* .



## System specifications

**Table 6. Brand / Sub-brand / Model number / Chassis description / Series level / Category type**

Features	Specification
Ambient operation	0 to 40 degree Celsius (32 to 104 degree F)
Non-operation temperature	-40 to 65 degree Celsius (-40 to 149 degree Fahrenheit)
Humidity	20% to 80% (non condensing)
Max Altitude	-15.2 to 3048 m (-50 to 10,000 ft)
OEM Ready	

**Table 7. Processor / chipset**

Features	Specification
SOC - Intel	Cherry Trail
CPU core	Intel Cherry Trail x5 Z-8350 (1.44 GHz Quad Core)
Graphics	Built-in Graphics controller supporting dual display up to 2560 x 1600 x 30 resolution at 60Hz

**Table 8. Memory**

Features	Description
System memory	2GB DDR3L 1600MHz, solder down
storage	8GB eMMC flash chip, solder down
Network	LAN, 10/100/1000 Base-T Ethernet WLAN+BT Combo Module: Azurewave AW-CM389MA w/Marvell 8897chip, M.2 2230 (SDIOinterface) (Optional)

**Table 9. I/O (front)**

Features	Specification
LEDs	· 1 (White / Amber on Power Button)
USB 2.0	1 * USB 2.0
USB 3.0	1 * USB 3.0
Audio universal jack	1 * Audio universal jack



**Table 10. I/O (rear)**

Features	Specification
USB 2.0	2 * USB 2.0 (stacked)
Display Port	2 * DP
Physical security (Right side)	1 * Kensington Lock Slot
Network	1 * UTP, RJ-45

**Table 11. Form factor**

Features	Specification
New Chassis	NewDell Wyse ID
Chassis access	Sealed chassis, accessible with tools
Optional mounting	Wall mount / vesa mount
Height (Z) mm	27.94
Width (x) mm	101.6
Depth (Y) mm	101.6
Weight (pounds / kilograms)	0.24 kg (0.53 lb)
Total no of HDDs/SDDs supported	0

**Table 12. Power requirement**

Features	Specification
Power Input voltage range	3A, 5Vdc. Comply with L.P.S.

**Table 13. BIOS**

Features	Specification
Standard BIOS, UEFI as implemented using AMI Dell BIOS	Y
Support Wake-On-LAN	Y

**Table 14. Operating system**

Features	Specification
OS and system software	Launch at RTS <ul style="list-style-type: none"> <li>• ThinLinux 1.0.4 (post RTS)</li> <li>• ThinOS 8.3.2</li> <li>• PColP enabled Wyse ThinOS</li> </ul>

# Troubleshooting your system

You can troubleshoot your system using indicators like diagnostic lights, and error messages during the operation of the device.

Topics:

- [Power states and LED behavior](#)
- [Diagnostic power LED codes](#)
- [Power LED error code behavior](#)

## Power states and LED behavior

**Table 15. Power states and LED behavior**

States	Behavior
Indicators	<ul style="list-style-type: none"> <li>• Power LED: Bicolor, White / Amber</li> <li>• Power state:               <ul style="list-style-type: none"> <li>• S0–On: Power LED solid white</li> <li>• S5 – Off: Power LED off</li> </ul> </li> <li>• Operation State:               <ul style="list-style-type: none"> <li>• BIOS Post: Power LED solid white</li> <li>• In OS: Power LED solid white</li> </ul> </li> </ul>
Power button control	<ul style="list-style-type: none"> <li>• Force Off-state: Push and hold power button is <math>\geq</math> 4 seconds</li> </ul>

## Diagnostic power LED codes

**Table 16. Diagnostic power LED codes**

Power LED light status	Possible cause	Troubleshooting steps
At first power apply: No LED light up briefly	Both power LED and activity LED come up briefly and then turn off.	<ul style="list-style-type: none"> <li>• Check AC power, call your utility company.</li> <li>• Check that AC power cord is plugged-in.</li> <li>• Check that DC plug is plugged into the unit.</li> </ul>
At first power apply: Both LEDs stay ON	Both power LED and activity LED come up briefly and then turn off.	<ul style="list-style-type: none"> <li>• Logic board defect</li> <li>• BIOS malfunctioning</li> <li>• Abnormal power source</li> </ul>
Push power button the LED does not turn	<ul style="list-style-type: none"> <li>• Power LED should come up in steady Blue.</li> </ul>	<ul style="list-style-type: none"> <li>• Logic board defect</li> <li>• Power button defect</li> </ul>



Power LED light status	Possible cause	Troubleshooting steps
	<ul style="list-style-type: none"> <li>Activity LED should turn on in steady Amber.</li> </ul>	<ul style="list-style-type: none"> <li>Mechanical assembly misaligned; causes miss actuation.</li> </ul>
LED comes up normally but no display	BIOS screen is displayed after few seconds.	<ul style="list-style-type: none"> <li>Incompatible monitor</li> <li>Defect logic board</li> <li>Malfunction dongle (if used)</li> <li>Defect cable or connector</li> </ul>
Distorted display	Should have normal viewable display.	<ul style="list-style-type: none"> <li>Incompatible monitor</li> <li>Incompatible dongle (if used)</li> <li>Not supported display mode</li> <li>Bad connection on display output</li> <li>Logic board defect</li> </ul>

## Power LED error code behavior

Table 17. Power LED error code behavior

LED# of flashes	Fault description	Fault	Action	Comment
2,1	CPU	CPU Failure	Type A	
2,2	Motherboard: BIOS ROM failure	Motherboard, covers BIOS corruption or ROM error	NA	Not applicable to X7 BIOS. No Test Case support.
2,3	Memory	No Memory/RAM detected	NA	Not supported. Memory is solder down on Motherboard. It is difficult to validate this function.
2,4	Memory	Memory/RAM failure	Type A	Supported. Memory is solder down on Motherboard, the Service team could replace the motherboard/memory to repurpose the board for repair.
2,5	Memory	Invalid memory is installed	NA	Memory is solder down on motherboard.
2,6	Motherboard: Chipset	Motherboard / Chipset error	NA	This code is not supported. HW dependent.
2,7	LCD	LCD failure	NA	This code is not supported. There is no LCD.
3,1	RTC Power failure	CMOS battery failure	Type B	
3,2	PCI / Video	PCI or Video card/ Chip failure	NA	Not applicable to X7 BIOS. No test case support.
3,3	BIOS Recovery 1	Recovery Image not found	Type A	
3,4	BIOS Recovery 2	Recovery Image found but invalid	Type A	
4,1	CPU Config or CPU Failure		NA	This code is not supported.

LED# of flashes	Fault description	Fault	Action	Comment
4,2	Generic POST Video Error—Old LED pattern 1110		NA	Not applicable to X7 BIOS. No test case support.

Example: **LED# of flashes: 2,1** indicates that LED blinks two times, pauses, and then blinks once.

**Troubleshooting action**

- Type A
  - Log the fault event.
  - Emit the LED error code pattern.
  - Repeat the LED error code pattern in a dead-loop.
- Type B
  - Log the fault event, if possible.
  - Emit the LED error code pattern.
  - Repeat the LED error code 3 more times.
  - Leave the LED light up in amber color.
  - Continue with POST.

