

belkin™

Advanced Secure 2-port DP to DP Flip KVM Switch



This Belkin product is compliant with latest NIAP Protection Profile PSS Ver. 3.0, which exceeds EAL4 and PP PSS Ver. 3.0.



User Manual

F1DN102FLP-DP-3 – Secure 2-port Flip DP-to-DP KVM with Audio, PP 3.0

F1DN202FLP-DP-3 - Secure 2-port Flip DP-to-DP Dual Head KVM with Digital Audio, PP 3.0

TABLE OF CONTENTS

Table of Contents	SECTIONS	1	2	3	4	5	6
Introduction		1					
Package Contents		1					
Overview		2					
Security Features		2					
Operational Features		4					
Flip KVM		5					
Equipment Requirements		6					
Safety Precautions		8					
User Guidance & Precautions		9					
Tamper Evident Labels		10					
Product Specifications		11					
F1DN102FLP-DP-3 Features		12					
F1DN202FLP-DP-3 Features		13					
Installation							14
Before Installation							14
Setup							16
Operation							17
Operating the Belkin Secure Flip KVM Switch							17
Troubleshooting							18
Information							21

INTRODUCTION

Thank you for purchasing this Belkin Secure Display Port 2-port Flip KVM Switch. This Switch is designed for use in secure environments comprised of sources with different security levels. Providing the highest security safeguards and features, this product meets all required cyber prevention requirements.

This User Manual provides all the details you'll need to install and operate your new product and to troubleshoot it in the unlikely event of a problem.

Why use the Belkin Secure Flip KVM Switch?

Belkin's Secure Display Port 2-port Flip KVM Switch is the first secure KVM in the industry specifically designed for 2-computer scenarios.

Many users in large organizations are required to switch between two isolated networks and call for a KVM solution that is both secure and cost-effective.

Most secure KVMs are high cost and require desktop space. Belkin's Flip KVM Switch addresses both the form factor and the price level issues. It is both compact and low cost and arrives with all cables integrated.

It is designed and tested to integrate seamlessly with systems and peripherals used by government, agencies, defense, intelligence, finance and any other high-security profile company.

Package Contents

- Belkin Secure Display Port Flip KVM Switch
- 12V 1.5A DC Power Supply with Worldwide interchangeable heads
- Remote Control Unit
- User Manual

Please note: Belkin Secure KVM Products cannot be upgraded, serviced or repaired.

Important Security Note: If you are aware of potential security vulnerability while installing or operating this product, we encourage you to contact us immediately at the following email address: gov_security@belkin.com

Important: This product is equipped with an always-on active anti-tamper system. Any attempt to open the enclosure may activate the anti-tamper system and render the unit permanently inoperable. If the unit's enclosure appears disrupted or if all the port LEDs flash continuously, please call Belkin Technical Support at **1 (800) 282-2355**

Revision

A – Initial Release, 02 Apr 2018

A01 – 30 May 2019

A02 – 20 Aug 2019

OVERVIEW

Security Features

Product is designed, manufactured and delivered in security-controlled environments. Below is a summary of the main advanced features incorporated in product:

Advanced isolation between computers and shared peripherals

The emulations of keyboard, mouse and display EDID, prevent direct contact between computers and shared peripherals. Product design achieves maximal security by keeping the video path separate with keyboard and mouse switched together, purging keyboard buffer when switching channels. All these features contribute to strong isolation between computer interfaces, maintained even when product is powered off.

Unidirectional data flow: USB, audio and video

Unique hardware architecture components prevent unauthorized data flow, including:

- Optical unidirectional data flow diodes in the USB data path that filtrate and reject unqualified USB devices;
- Secure analog audio diodes that prevent audio eavesdropping with no support for microphone or any other audio-input device;
- Video path is kept separate from all other traffic, enforcing unidirectional native video flow. EDID emulation is done at power up and blocks all EDID/MCCS writes. For DisplayPort video, filtration of AUX channel exists to reject unauthorized transactions.

Isolation of power domains

Complete isolation of power domains prevents signaling attacks.

Secure administrator access & log functions

Product incorporates secure administrator access and log functions to provide auditable trail for all product security events, including battery backup life for anti-tampering and log functions. Non-reprogrammable firmware prevents the ability to tamper with product logic.

Always-on, active anti-tamper system

Active anti-tampering system prevents malicious insertion of hardware implant such as wireless key-logger inside product enclosure. Any anti-tampering attempt causes isolation of all computers and peripheral devices rendering product inoperable and showing clear indications of tampering event to user.

Holographic security tamper-evident labels are placed on the enclosure to provide a clear visual indication if product has been opened or compromised.

Metal enclosure is designed to resist mechanical tampering with all microcontrollers protected against firmware-read, modification and rewrite.

OVERVIEW

Secure Packaging

“Tear away” packaging ensures secure delivery of the Switch as it is routed to the end user. The recyclable packaging also breaks down flat, simplifying the cleanup process.

Composite Device Support

To enable support for USB composite devices, such as KVM extenders, the keyboard port can also support a mouse, if connected. The mouse port, cannot support keyboards.

OVERVIEW

Table of Contents

SECTIONS

1

2

3

4

5

6

Operational Features

The Belkin Secure Flip KVM Switch was designed with the user in mind for today's IT environment. Below is a summary of some of the features incorporated into the product.

Compact, cost effective and secure KVM for 2 computer scenarios

Belkin's Secure Display Port 2-port Flip KVM Switch is the first secure KVM in the industry specifically designed for 2-computer scenarios. Many users in large organizations are required to switch between two isolated networks and call for a KVM solution that is both secure and cost-effective.

Exceptionally Small Footprint

Weighing as little as ~1 lbs., sized ~4X3X1 Inches, Belkin Flip Secure KVMs are by far the world's smallest secure KVMs on the market today.

Audio Support

This Belkin Secure Flip KVM Switch supports audio out switching. Microphone switching is not supported to prevent analog leakages through audio ports.

Port Selection

The Belkin Secure Flip KVM Switch has two illuminate channel push buttons white in color for easy selection and indication of channels. A Red/Green overlay is provided should a user want to designate colors for channels.

Increased Reliability

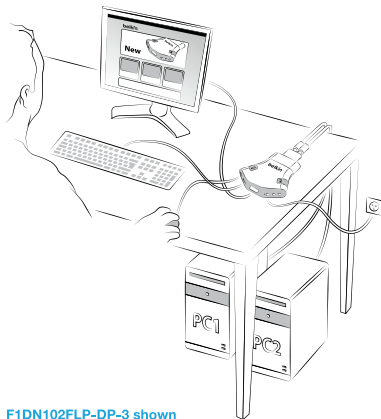
Using a new, advanced anti-tampering battery with extremely low self-discharge rate, the life expectancy of the switch has been set to over 7 years.

No Cables required

No cables are required with the Belkin Secure Flip KVM Switch as all cables are part of the product making it very easy to install.

Flip KVM

- Belkin® Secure 2-Port Flip **KVM** Switch controls **K**eyboard, **V**ideo, and **M**ouse
- User operates computers using a single set of keyboard and mouse
- User interacts with single or Dual displays at a time
- Switching control between computers can be done via:
 - Switch control push-buttons
 - Remote push-button



F1DN102FLP-DP-3 shown

Equipment Requirements

Operating Systems

Product is compatible with devices running on the following operating systems:

- Microsoft® Windows®
- Red Hat®, Ubuntu® and other Linux® platforms
- Mac OS® X v10.3 and higher.

USB Keyboard console port

The product console USB keyboard port is compatible with Standard USB keyboards.

Notes:

- a. Console USB keyboard and mouse ports are switchable, i.e. you can connect keyboard to mouse port and vice versa. However, for optimal operation it is recommended to connect USB keyboard to console USB keyboard port and USB mouse to console USB mouse port.
- b. For security reasons products do not support wireless keyboards. In any case do not connect wireless keyboard to product.
- c. Non-standard keyboards, such as keyboards with integrated USB hubs and other USB-integrated devices, may not be fully supported due to security policy. If they are supported, only classical keyboard (HID) operation will be functional. It is recommended to use standard USB keyboards.

USB Mouse console port

The product console USB mouse port is compatible with standard USB mice.

Notes:

- a. Console USB keyboard and mouse ports are switchable, i.e. you can connect keyboard to mouse port and vice versa. However, for optimal operation it is recommended to connect USB keyboard to console USB keyboard port and USB mouse to console USB mouse port.
- b. Console USB mouse port supports Standard KVM Extender composite device having a keyboard/mouse functions.
- c. For security reasons products do not support wireless mice. In any case do not connect wireless mouse to product.

User Audio Devices - F1DN102FLP-DP-3

Product is compatible with the following types of user audio devices:

- Stereo headphones;
- Amplified stereo speakers.

Note: In any case do not connect a microphone to product audio output port including headsets.

User Audio Devices – F1DN202FLP-DP-3

Product provides a secure unidirectional digital audio channel via DP connections. All user audio devices should be connected to a DP monitor capable of supporting:

- Stereo headphones;
- Amplified stereo speakers.

Note: In any case do not connect a microphone to the product audio channel including headsets.

USB Mouse, keyboards, video and audio molded cables

The Belkin Secure Flip KVM Switch includes two sets of USB, DisplayPort and Audio cables, one for each connected PC. The USB connectors on the client side of these computers are of type USB-A. Audio 3.5mm jacks are included on the F1DN102FLP-DP-3 Only.

OVERVIEW

Safety Precautions

- Before cleaning, disconnect the product from any electrical power supply.
- Do not expose the product to excessive humidity or moisture.
- Do not store or use for extensive period of time in extreme thermal conditions – it may shorten product lifetime.
- Install the product only on a clean secure surface.
- If the product is not used for a long period of time, disconnect it from electrical power.
- If any of the following situations occurs, have the product checked by a qualified service technician:
 - Liquid penetrates the product's case.
 - The product is exposed to excessive moisture, water or any other liquid.
 - The product is not working well even after carefully following the instructions in this user's manual.
 - The product has been dropped or is physically damaged.
 - The product shows obvious signs of breakage or loose internal parts.
 - In case of external power supply – If power supply overheats, is broken or damaged, or has a damaged cable.
- The product should be stored and used only in temperature and humidity controlled environments as defined in the product's environmental specifications.
- Never attempt to open the product enclosure. Any attempt to open the enclosure will permanently damage the product.
- The product contains a non-replaceable internal battery. Never attempt to replace the battery or open the enclosure.
- This product is equipped with an always-on active anti-tampering system. Any attempt to open the product enclosure will activate the anti-tamper triggers and render the unit inoperable and warranty void.

User Guidance & Precautions

Please read the following User Guidance & Precautions carefully before using the product:

1. As product powers-up it performs a self-test procedure. In case of self-test failure for any reason, including jammed buttons, the product will be Inoperable. Self-test failure will be indicated by the following abnormal LED behavior:

- a. All channel-select LEDs will be turned ON and then OFF;
- b. A specific, predefined LED combination will be turned ON;
- c. The predefined LED combination will indicate the problem type (jammed buttons, firmware integrity).

Try to power cycle product. If problem persists please contact your system administrator or technical support.

2. Product power-up and RFD behavior:

- a. By default, after product power-up, the active channel will be computer #1, indicated by the applicable front panel push button LED lit.
- b. Product Restore-to-Factory-Default (RFD) function is available via a physical control button on rear panel. Use a sharp object or paper clip to hold RFD button pressed for several seconds to initiate an RFD action.
- c. RFD action will be indicated by front panel LEDs blinking all together.
- d. When product boots after RFD, keyboard and mouse will be mapped to the active channel #1 and default settings will be restored, erasing all user-set definitions.

3. The appropriate usage of peripherals (e.g. keyboard, mouse, display, authentication device) is described in detail in this User Manual's appropriate sections. Do not connect any authentication device with an external power source to product.
4. For security reasons products do not support wireless keyboards and mice. In any case do not connect wireless keyboard/mouse to product.
5. For security reasons products do not support microphone/line-in audio input. In any case do not connect a microphone to product audio output port, including headsets.
6. Product is equipped with an always-on active anti-tampering system. Any attempt to open product enclosure will activate the anti-tamper system indicated by all channel-select LEDs flashing continuously. In this case, product will be inoperable and warranty void. If product enclosure appears disrupted or if all channel-select LEDs flash continuously, please remove product from service immediately and contact technical support.
7. In case a connected device is rejected in the console port group the user will have the following visual indications:
 - a. When connecting a non-qualified keyboard, the keyboard will be non-functional with no visible keyboard strokes on screen when using the keyboard.
 - b. When connecting a non-qualified mouse, the mouse will be non-functional with mouse cursor frozen on screen.
 - c. When connecting a non-qualified display, the video diagnostic LED will flash green and video will not work.

OVERVIEW

User Guidance & Precautions (Con.)

8. Do not connect product to computing devices:
 - a. That are TEMPEST computers;
 - b. That include telecommunication equipment;
 - c. That include frame grabber video cards;
 - d. That include special audio processing cards.
9. **Important!** Before re-allocating computers to channels, it is mandatory to power cycle product, keeping it powered OFF for more than 1 minute.
10. Product log access and administrator configuration options are described in product Administrator Guide.
11. Authentication session will be terminated once product power is down or user intentionally terminates session.
12. If you are aware of any potential security vulnerability while installing or operating product, please remove product from service immediately and contact us in one of the ways listed in this manual.

Tamper Evident Labels

Belkin Secure Switch uses holographic tamper evident labels to provide visual indications in case of enclosure intrusion attempt.

If for any reason the tamper evident seal is missing, appears disrupted, or looks different than the example shown here, please avoid using product and call Belkin Technical Support at: **(800) 282-2355**.

Active Anti-Tampering System

Belkin Secure Switch is equipped with always-on active anti-tampering system. If mechanical intrusion is detected by this system, the Switch will be permanently disabled and LED will blink continuously.

If product indication tampered state (all LEDs blinking) - please call Technical Support and avoid using that product

Product Enclosure Warning Label

Belkin Secure Switch has the following warning printed next to the location of the product Asset Tag and Tamper Evident labels on product enclosure:

WARNING: This enclosure is tamper proof. The unit will self destruct if opened.

Tamper Evident Label
Do not use if disturbed.



OVERVIEW

Table of Contents

SECTIONS

1

2

3

4

5

6

Product Specifications

Part No.	F1DN102FLP-DP-3, F1DN202FLP-DP-3
No. of Users Supported	1
No. of Computers Supported	2
Power Requirements	12V DC, 1.5A (maximum) power adapter with center-pin-positive polarity and worldwide interchangeable heads
AC Input Voltage	100 to 240VAC
Console Keyboard Input	USB Type A
Console Mouse Input	USB Type A
Console Video Port ¹	F1DN102FLP-DP-3 - DisplayPort 1.2a 1 Output F1DN202FLP-DP-3 - DisplayPort 1.2a 2 Outputs
Console Audio output jack	1/8" (3.5mm) stereo female jack (F1DN102FLP-DP-3 Only)
Computer Keyboard/Mouse cable	USB Type A
Computer wire length	6 ft [1.8 meters] – channel 1 6 ft [1.8 meters] – channel 2
OS	Windows, Linux, MAC OS
Made In	Designed in California. Assembled in US with US and Foreign components.

¹ The system is designed for console cables less than 10 ft / 3 meters in length

Product life-cycle	5 years
Warranty	3 Years
Enclosure	Impact Resistant ABS Plastic
Computer Audio Input plug	1/8" (3.5mm) stereo plug (F1DN102FLP-DP-3 Only)
Computer Video Input connector	DisplayPort
Port Selector illuminated push-buttons	2
User Channel Selection Methods	Front panel push-buttons
Operating Temp	32° to 104° F (0° to 40° C)
Storage Temp	-4° to 140° F (-20° to 60° C)
Humidity	0-80% RH, non-condensing
Dimensions	F1DN102FLP-DP-3 4.3 (W) x 3 (D) x 1 (H) inch 110 (W) X 80 (D) X 26(H) mm F1DN202FLP-DP-3 4.3 (W) x 3 (D) x 1.1 (H) inch 110 (W) X 80 (D) X 29(H) mm
Weight	F1DN102FLP-DP-3 1.2 lbs. / 0.54 KG F1DN202FLP-DP-3 1.2 lbs. / 0.54 KG
Security Accreditation	Common Criteria Validated To NIAP Protection Profile PSS Ver. 3.0

OVERVIEW

Table of Contents

SECTIONS

1

2

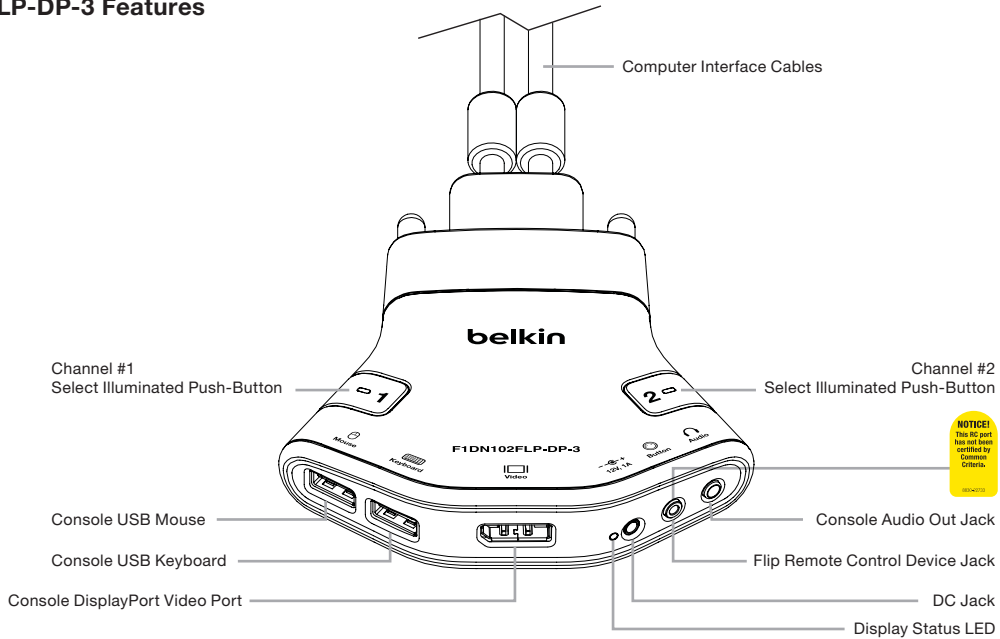
3

4

5

6

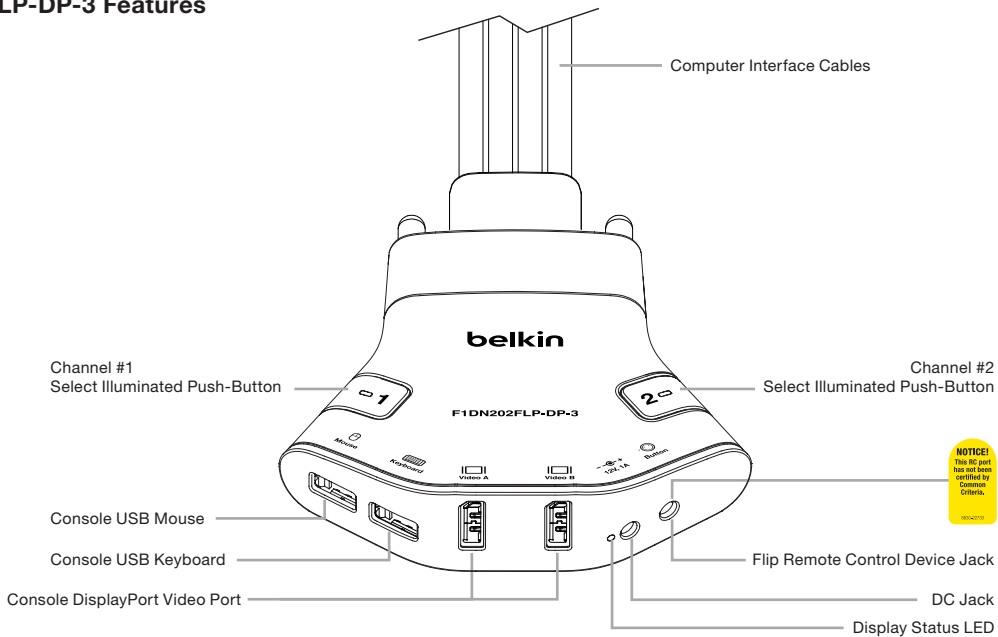
F1DN102FLP-DP-3 Features



OVERVIEW

Table of Contents	SECTIONS	1	2	3	4	5	6
-------------------	----------	---	---	---	---	---	---

F1DN202FLP-DP-3 Features



INSTALLATION

Before Installation

Important:

1. If the unit's enclosure appears disrupted or if all channel-select LEDs flash continuously, please remove product from service immediately and contact Belkin Technical Support at **(800) 282-2355**.
2. Do not connect product to computing devices:
 - a. That are TEMPEST computers;
 - b. That include telecommunication equipment;
 - c. That include frame grabber video cards;
 - d. That include special audio processing cards.

Unpacking the Product

Before opening the product packaging, inspect the packaging seal condition to assure that product was not accessed or tampered during delivery. If the packaging seal looks suspicious, contact Belkin Technical Support and do not use the product.

After removing the packaging seal, please inspect packaging content to verify that required components are included as listed in the Package Contents of this manual.

After the Belkin Secure Flip KVM Switch is removed from its packaging materials, inspect the tampering-evident label to assure that product is properly sealed. If one or more label is damaged or missing, contact Belkin Tech Support and do not use that product.

Consider the following when deciding where to place the Switch:

- Access to the front-panel push buttons
- The lengths of the cables attached to your keyboard and mouse
- The location of your computers in relation to your console

Warning: Avoid placing cables near fluorescent lights, air-conditioning equipment, or machines that create electrical noise (e.g., vacuum cleaners).

Important: As the unit powers up it performs a self-test procedure. In case the self-test has failed for any reason the product LED behavior will be abnormal as described in User Guidance section. Try to power cycle the unit. If problem persists please contact your system administrator or Technical Support.

INSTALLATION

Table of Contents

SECTIONS

1

2

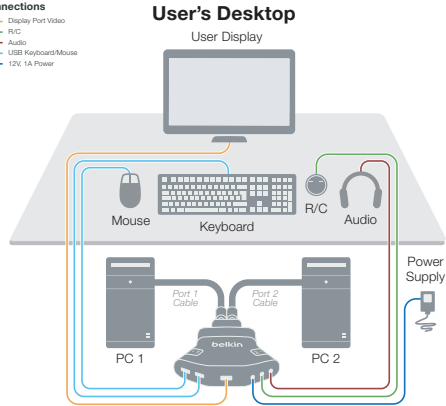
3

4

5

6

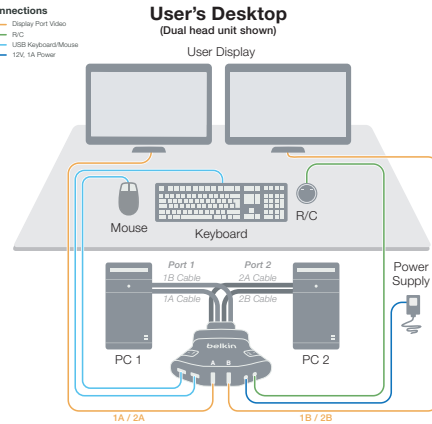
Connections
— Display Port Video
— R/C
— Audio
— USB Keyboard/Mouse
— 12V, 1A Power



F1DN102FLP-DP-3

Belkin Secure Display Port 2-Port Flip KVM Single Output

Connections
— Display Port Video
— R/C
— USB Keyboard/Mouse
— 12V, 1A Power



F1DN202FLP-DP-3

Belkin Secure Display Port 2-Port Flip KVM Dual Head KVM

1. Computers are connected to the Switch ports 1 & 2
2. Monitor is connected to the DP port on the console section of the Switch
3. USB Keyboard and Mouse are connected to the console section of the switch
4. User headphones or amplified speakers are connected to audio-out port on the console section of the Switch (F1DN102FLP-DP-3 Only)

Setup

Step 1 – Connecting Peripherals to the Secure KVM Switch

Warning: Before attempting to connect anything to the Switch or computers, please ensure all devices are powered off.

- 1.1 Connect monitor to the Console video port. For easier referencing, you can label each computer and monitor coupled together (e.g. PC1-Monitor1, etc.).
- 1.2 Connect USB keyboards to the USB port marked “Keyboard.”
- 1.3 Connect USB mouse to the USB port marked “Mouse”.

Note:

1. The Switch will not operate properly if the keyboard and mouse are not connected to their respective ports. The mouse USB console port supports both keyboard and mouse.
2. For security reasons, only standard keyboard functions are supported. Keyboards functions such as integrated USB hubs, card-readers, storage devices or multimedia extensions are not supported.

- 1.4 Connect user headphone or amplified speakers to the console audio output port marked “Audio”.

Caution: Do not connect a microphone to the audio output port. It is not supported for security reasons.

Step 2 – Connecting Computers to the Secure KM Switch

- 2.1 Connect the switch to two computers via product’s molded wires. For USB, select any available functional USB port on the computer. For audio connect to available audio output jack (lime green color) or line output jack (blue color).

Step 3 – Powering Up

- 3.1 Power up the monitor.
- 3.2 Connect the product to the cable DC plug of the 12V 1.5A external AC/DC power supply.
- 3.3 Power up the two computers, and check display and peripheral functionality.

Check that display, keyboard, mouse and audio are working properly on each computer. If you encounter a problem, please check the cable connections to that computer and reboot. If problem persists, please refer to the Troubleshooting section in this Manual.

Operating the Belkin Secure Flip KVM Switch

Self-Test Procedure

As product powers-up it performs a self-test procedure. In case of self- test failure for any reason, including jammed buttons, the product will be Inoperable. Self-test failure will be indicated by the following abnormal LED behavior:

- All channel-select LEDs will be turned ON and then OFF;
- A specific, predefined LED combination will be turned ON;
- The predefined LED combination will indicate the problem type (jammed buttons, firmware integrity).

Try to power cycle product. If problem persists please contact your system administrator or technical support.

Illuminated Push Buttons

The default channel is #1 upon powering up.

The user can select the other channel by pressing the other push button. The mouse cursor will be positioned at the center of the selected computer display.

The selected channel is indicated by the appropriate push button being illuminated.

The video, keyboard, mouse and audio will follow the selected channel once pressing the push button.

TROUBLESHOOTING

General

As product powers-up all channel-select LEDs are turned ON and then OFF. After that a specific, predefined LED combination is turned ON. Product is inoperable.

- The product did not pass self-test procedure. Try to power cycle product. If problem persists please contact your system administrator or our technical support.

No power, and none of the channel selected buttons is illuminating

- Check that the power supply or power cable is properly connected to the mains socket
- Check that DC plug is fully inserted into the switch DC jack
- Check that the device is powered by using optical mouse with visible red light
- If power is not available, change the power supply

Channel select LEDs are blinking with audible repeating clicking sounds

- This occurs after the configuration is set. Power-cycle the unit (disconnect and re-plug the power adapter)
- If the blinking and clicking still persist after power cycling the unit, it is possible that the device anti-tampering system was triggered. Change the unit and call Belkin technical support

Keyboard/Mouse

Mouse not working (both channels)

- Check that the mouse is not plugged into keyboard port

The computer does not detect my keyboard, or my keyboard does not work when I switch computers or reboot

- Check that the keyboard you are using is connected properly to the KM Switch
- Check that the USB cable between the KM Switch and the computer is completely connected
- Try connecting to a different USB port on the computer
- Make sure the keyboard works when directly plugged into the computer, i.e the HID USB driver is installed on the computer. Rebooting may be necessary when trying this
- Make sure you are not using a keyboard with an integrated USB hub or other USB-integrated devices
- If the computer is coming out of standby mode, allow up to one minute to regain mouse function
- Try a different keyboard

The CAPS, NUM, and Scroll Lock lights on my keyboard do not function when I connect to the Switch

- This is normal operation. The lock-state information is fully functional. Due to the security of the Switch and known exploitation of lock-state information for leakages, the LED status is not supported. Please refer to the operating system for verification of the lock-state information for CAPS, NUM, and Scroll Lock

Certain keyboard functions are not working

- Some non-standard keyboard functions are disabled by the switch to prevent security risks. Contact Belkin Tech Support for latest compatibility list

Mouse

The computer does not detect my mouse, or my mouse does not work when I switch computers or reboot

- Check that the mouse you are using is connected properly and to the correct port on the Switch
- Check that the USB cable between the Switch and the computer is completely connected
- Try connecting to a different USB port on the computer
- Make sure the mouse works when directly plugged into the computer, i.e. the HID USB driver is installed on the computer. Rebooting may be necessary when trying this

- Make sure you are not using a wireless mouse or a mouse with an integrated USB hub or other USB-integrated devices. These are not supported by the switch due to security policy
- If the computer is coming out of standby mode, allow up to one minute to regain mouse function
- Try a different mouse
- For extending USB, use only active USB extenders (over CAT5 cable)

Video

No video image appears on user display in both channels

- Check that the display is properly powered
- Check that video cable is properly secured to the video port on the Switch console
- Check at the display on-screen menu that source selected matches the video cable connected to the display
- Check whether display video mode is identical to display video mode in the relevant PC, i.e Display Port and Display Port
- Check that the display LED is steady green. If not, this might be due to the fact the Switch did not receive EDID from the display. With everything connected, power-cycle the Belkin Secure Flip KVM Switch to reset the video. Make sure the Video Diagnostic LED is solid green

No video image appears on user display in one channel

- Reboot the computer
- Check that the video cable connecting computer and KVM is properly secured at both sides
- Check that PC video output is sent to the connected video connector if PC supports multiple displays
- Check that PC resolution matches connected display capabilities
- Connect the display directly to the PC to confirm that video output is available and that good image is shown

Bad video image quality one or both channels

- Check that all video cables are properly connected to the Switch, computer, and display
- With everything connected, power-cycle the Belkin Secure Flip KVM Switch to reset the video. Make sure the Video Diagnostic LED is solid green
- Check that the display that you are using supports the resolution and refresh-rate settings on your computer
- Lower the video resolution of your PCs
- Connect the display directly to the computer you are having trouble with to see if the problem still appears

Note: If the Belkin Secure Switch does not work properly, or the configuration procedure is unclear or does not work, contact Belkin support at **1-800-282-2355**.

Regulatory Information

DECLARATION OF CONFORMITY WITH FCC RULES FOR ELECTROMAGNETIC COMPATIBILITY

We, Belkin International, Inc., of 12045 E. Waterfront Drive, Playa Vista, CA 90094, declare under our sole responsibility that the products described in this manual comply to the declaration found at:

<http://www.belkin.com/us/support-article?articleNum=289064>

Warranty

Belkin International, Inc., Limited 3-Year Product Warranty

Please see

<http://www.belkin.com/us/support-article?articleNum=287088>
for complete Warranty details

What this warranty covers.

Belkin International, Inc. (“Belkin”) warrants to the original purchaser of this Belkin product that the product shall be free of defects in design, assembly, material, or workmanship.

What the period of coverage is.

Belkin warrants the Belkin product for three years.

What will we do to correct problems?

Product Warranty.

Belkin will repair or replace, at its option, any defective product free of charge (except for shipping charges for the product). Belkin reserves the right to discontinue any of its products without notice, and disclaims any limited warranty to repair or replace any such discontinued products. In the event that Belkin is unable to repair or replace the product (for example, because it has been discontinued), Belkin will offer either a refund or a credit toward the purchase of another product from Belkin.com in an amount equal to the purchase price of the product as evidenced on the original purchase receipt as discounted by its natural use.

What is not covered by this warranty?

All above warranties are null and void if the Belkin product is not provided to Belkin for inspection upon Belkin's request at the sole expense of the purchaser, or if Belkin determines that the Belkin product has been improperly installed, altered in any way, or tampered with. The Belkin Product Warranty does not protect against acts of God such as flood, lightning, earthquake, war, vandalism, theft, normal-use wear and tear, erosion, depletion, obsolescence, abuse, damage due to low voltage disturbances (i.e. brownouts or sags), non-authorized program, or system equipment modification or alteration.

How to get service?

To get service for your Belkin product you must take the following steps:

1. Contact Belkin International, Inc., at 12045 E. Waterfront Drive, Playa Vista, CA 90094, Attn: Customer Service, or call **(800)-282-2355**, within 15 days of the Occurrence.
Be prepared to provide the following information:
 - a. The part number of the Belkin product.
 - b. The product Serial Number.
2. Your Belkin Customer Service Representative will then instruct you on how to forward your receipt and Belkin product and how to proceed with your claim.

Belkin reserves the right to review the damaged Belkin product. All costs of shipping the Belkin product to Belkin for inspection shall be borne solely by the purchaser.

If Belkin determines, in its sole discretion, that it is impractical to ship the damaged equipment to Belkin, Belkin may designate, in its sole discretion, an equipment repair facility to inspect and estimate the cost to repair such equipment. The cost, if any, of shipping the equipment to and from such repair facility and of such estimate shall be borne solely by the purchaser. Damaged equipment must remain available for inspection until the claim is finalized. Whenever claims are settled, Belkin reserves the right to be subrogated under any existing insurance policies the purchaser may have.

How state law relates to the warranty.

THIS WARRANTY CONTAINS THE SOLE WARRANTY OF BELKIN. THERE ARE NO OTHER WARRANTIES, EXPRESSED OR, EXCEPT AS REQUIRED BY LAW, IMPLIED, INCLUDING THE IMPLIED WARRANTY OR CONDITION OF QUALITY, MERCHANTABILITY OR FITNESS FOR A PARTICULAR PURPOSE, AND SUCH IMPLIED WARRANTIES, IF ANY, ARE LIMITED IN DURATION TO THE TERM OF THIS WARRANTY.

Some states do not allow limitations on how long an implied warranty lasts, so the above limitations may not apply to you.

IN NO EVENT SHALL BELKIN BE LIABLE FOR INCIDENTAL, SPECIAL, DIRECT, INDIRECT, CONSEQUENTIAL OR MULTIPLE DAMAGES SUCH AS, BUT NOT LIMITED TO, LOST BUSINESS OR PROFITS ARISING OUT OF THE SALE OR USE OF ANY BELKIN PRODUCT, EVEN IF ADVISED OF THE POSSIBILITY OF SUCH DAMAGES.

This warranty gives you specific legal rights, and you may also have other rights, which may vary from state to state. Some states do not allow the exclusion or limitation of incidental, consequential, or other damages, so the above limitations may not apply to you.

GS 5/15/2013

Reporting Belkin Product Security Vulnerability

If you are aware of potential security vulnerability with any Belkin Government product, we encourage you to contact us immediately at the following email address: gov_security@belkin.com or our technical support line at: **1-800-282-2355**

After your communication is received, Belkin Government personnel will contact you to follow up. To ensure confidentiality, Belkin encourages you to use PGP encryption key for secure communications.

The gov_security@belkin.com email address is not intended to reach technical support on Belkin Government products or services.

belkin.com/cybersecurity

© 2019 Belkin International, Inc. All rights reserved. All trade names are registered trademarks of respective manufacturers listed. Windows and Windows Vista are either registered trademarks or trademarks of Microsoft Corporation in the United States and/or other countries. Mac OS is a trademark of Apple Inc., registered in the U.S. and other countries.