

Jabra  
Talk 45



User manual

1. WELCOME.....	3
2. HEADSET OVERVIEW.....	4
3. HOW TO WEAR .....	5
3.1 CHANGE EARGELS	
3.2 ATTACHING THE EARHOOK	
4. HOW TO CHARGE THE BATTERY.....	7
5. HOW TO CONNECT .....	8
5.1 CONNECT TO MOBILE DEVICE	
5.2 CONNECT TO MOBILE DEVICE (NFC)	
6. HOW TO USE .....	10
6.1 MULTIPLE CALL HANDLING	
7. JABRA ASSIST APP .....	12
8. SUPPORT .....	13
8.1 FAQ	
8.2 HOW TO CARE FOR YOUR HEADSET	

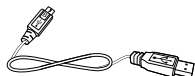
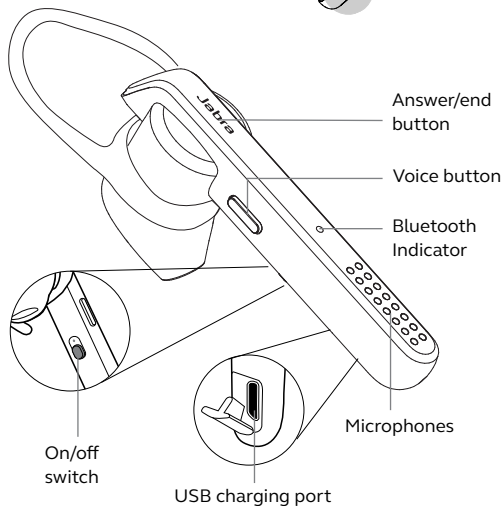
# 1. WELCOME

Thank you for using the Jabra Talk 45. We hope you will enjoy it!

## **JABRA TALK 45 FEATURES**

- Clear calls - HD voice (phone and network dependent) and two microphones
- Noise cancelling - advanced technology for clear, noise-free calls
- Long lasting - up to 6 hours of calls, and up to 8 days of standby time
- Stream from your phone - music, podcasts and GPS directions
- Voice Control - dedicated button for Siri® and Google Assistant™

## 2. HEADSET OVERVIEW



USB cable



Eargels



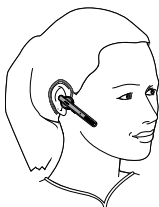
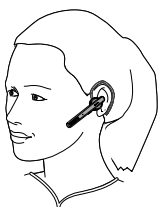
Earhooks



Car charger

## 3. HOW TO WEAR

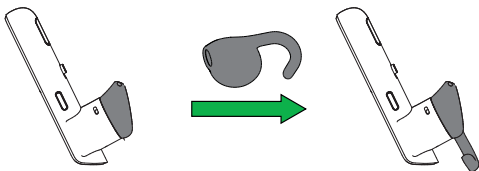
The headset can be worn with or without the earhook, on the left or right ear. Additional earhooks and eargels are available in the pack.



### 3.1 CHANGE EARGELS

---

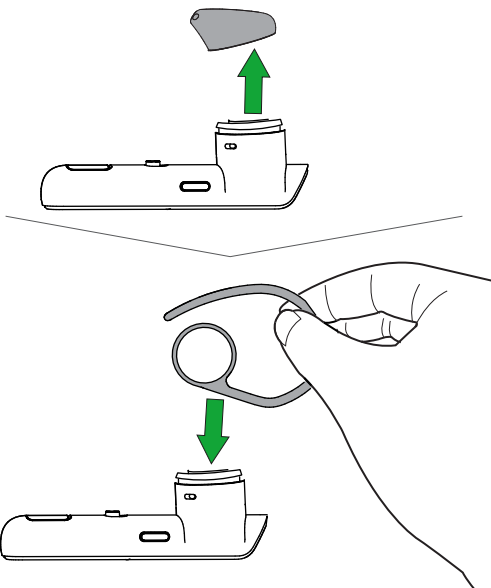
Choose between different ergo-designed eargels for optimal fit and comfort.



## 3.2 ATTACHING THE EARHOOK

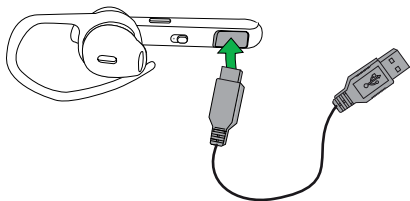
---

The earhook can be attached to the headset if the earhook fit is preferred.



## 4. HOW TO CHARGE THE BATTERY

1. Pull back the charging cover on the headset to expose the USB charging port.
2. Connect the headset to a USB port using the USB cable.



**NOTE:** For safety reasons, it is recommended not to use the headset while it is charging.

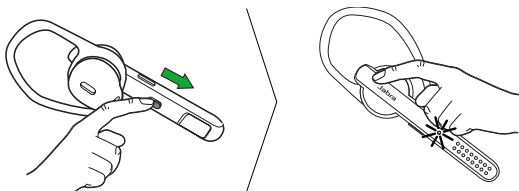
It takes approx. 2 hours to fully charge the headset.

# 5. HOW TO CONNECT

## 5.1 CONNECT TO MOBILE DEVICE

---

1. Turn the headset on (set the **On/off** switch to the On position).
2. Press and hold (3 secs) the **Answer/end** button until the Bluetooth indicator flashes blue, and pairing mode is announced in the headset.
3. Follow the voice-guided pairing instructions to pair to your Bluetooth device.

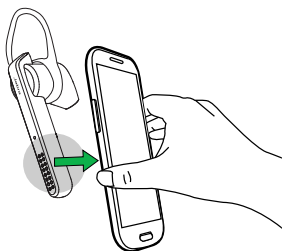




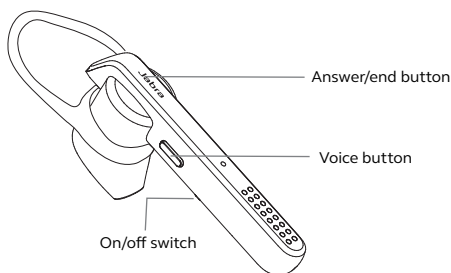
## 5.2 CONNECT TO MOBILE DEVICE (NFC)




---

1. Ensure that NFC is enabled on your mobile device.
2. Slowly slide the NFC zone of the headset against the NFC zone of the mobile device until a connection is confirmed.



## 6. HOW TO USE




FUNCTION	ACTION
 <p data-bbox="246 839 343 872">On/Off</p>	<p data-bbox="480 839 785 872">Slide the <b>On/off</b> switch</p>
 <p data-bbox="246 987 408 1053">Answer/end call</p>	<p data-bbox="480 987 888 1053">Tap the <b>Answer/end</b> button, or say 'Answer'</p>
<p data-bbox="246 1113 387 1146">Reject call</p>	<p data-bbox="480 1093 853 1159">Double-tap the <b>Answer/end</b> button, or say 'Ignore'</p>
<p data-bbox="246 1196 387 1262">Redial last number</p>	<p data-bbox="480 1196 853 1262">Double-tap the <b>Answer/end</b> button when not on a call</p>
 <p data-bbox="246 1301 439 1443">Activate voice controls (phone dependent)</p>	<p data-bbox="480 1301 905 1443">Tap the <b>Voice</b> button for voice dialing (e.g. Siri/Google Now). Press and hold (1 sec) the <b>Voice</b> button for voice commands</p>
<p data-bbox="246 1509 439 1542">Mute/unmute</p>	<p data-bbox="480 1490 884 1556">Tap the <b>Voice</b> button when on a call</p>

## 6.1 MULTIPLE CALL HANDLING

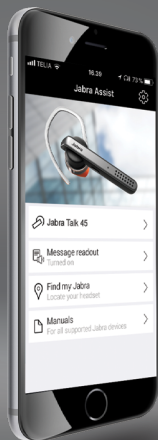
---

The headset can accept and handle multiple calls simultaneously.

	FUNCTION	ACTION
	End current call and answer incoming call	Tap the <b>Answer/end</b> button
	Switch between held call and active call	Press and hold (2 secs) the <b>Answer/end</b> button
	Put current call on hold and answer incoming call	Press and hold (2 secs) the <b>Answer/end</b> button
	Reject incoming call	Double-tap the <b>Answer/end</b> button

---

# 7. JABRA ASSIST APP



Jabra Assist app



Find my headset



Message readout



Help at your fingertips



# 8. SUPPORT

## 8.1 FAQ

---

View the comprehensive FAQ on [Jabra.com/talk45](https://www.jabra.com/talk45).

## 8.2 HOW TO CARE FOR YOUR HEADSET

---

- Always store the headset with the power off and safely protected.
- Avoid storage at extreme temperatures (above 70°C/158°F or below -10°C/14°F). This can shorten battery life and may affect headset operation.
- Do not expose the headset to rain or other liquids.

© 2018 GN Audio. All rights reserved. Jabra® is a registered trademark of GN Audio. The Bluetooth® word mark and logos are owned by the Bluetooth SIG, Inc. and any use of such marks by GN Audio is under license.

---

Made in China  
MODEL: OTE18



 **Bluetooth®**

---

**Declaration of Conformity** can be found on  
[www.jabra.com/doc](http://www.jabra.com/doc)