



User's Manual

Body Camera

DrivePro™ Body 30

(Version 1.0)



Table of Contents

1. Introduction	2
2. System Requirements	3
3. Getting Started.....	4
3-1 Function Buttons.....	4
3-2 LED Indicator Table	5
3-3 Charging the DrivePro™ Body 30	7
4. Recording Videos.....	7
4-1 Buffering Mode.....	7
4-2 Recording Mode	8
4-3 Recording Videos with Infrared LEDs	8
5. Taking Photos	8
6. Using the DrivePro™ Body App	9
6-1 Downloading and Installing the App	9
6-2 Connecting to the DrivePro™ Body App	9
6-3 DrivePro™ Body App Home	11
6-4 Playing Videos and Browsing Photos	12
6-5 Settings	13
7. Using the DrivePro™ Body Toolbox Software.....	16
7-1 Status	16
7-2 Settings	17
7-3 Tools.....	19
7-4 File Manager	20
7-5 Preference	21
8. Docking Station (Optional).....	23
9. Cautions	26
10. IP67 Protection.....	27
11. Package Contents.....	28
12. Specifications	30
13. Frequently Asked Questions.....	31
14. Recycling and Environmental Protection	32
15. Two-year Limited Warranty	33
16. GNU General Public License (GPL) Disclosure	34
17. End-User License Agreement (EULA)	34
18. Federal Communications Commission (FCC) Statement	37

1. Introduction

Transcend's DrivePro™ Body 30 is an easy-to-operate wearable video camera that is tailor-made for police officers, security guards and other professionals to capture real time videos and photos of events. The Wi-Fi network allows live streaming to your smartphone and adjusting the function settings using the DrivePro™ Body App.

Attached with the convenient 360° rotatable clip or Velcro holder to your uniform/jacket, the DrivePro™ Body 30 features a 130° wide angle lens for the best field of view and records videos in crystal clear Full HD 1080P (30 FPS) with a F2.0 aperture to ensure both the important details of your actions and those in the camera's field are clearly recorded. The handy snapshot function allows you to take photos while recording. Transcend's DrivePro™ Body 30 has a built-in Li-Polymer battery that can record up to 12 hours and only takes approximately 5 hours to be fully recharged.

The DrivePro™ Body 30 has an internal 64GB eMMC storage, allowing users to save up to 12 hours of footage. In addition, the camera is rugged and IP67 water resistant, providing extra protection and durability. The DrivePro™ Body Toolbox provides secure data protection mechanism to protect the recorded data. For enterprises or departments that purchase multiple DrivePro™ Body cameras, Transcend's optional 6-port Docking Station offers the best solution as each port can simultaneously charge and upload the recorded data to your database.

Features

- Smooth and detailed Full HD 1080P recording at 30fps resolution.
- Handy snapshot button to take photos while recording (2 million pixels camera).
- F2.0 aperture with 130° wide angle lens.
- Infrared LED for clear night vision and low light conditions.
- Built-in Wi-Fi and Bluetooth to allow live streaming to your smartphone app and adjust the function settings.
- 64GB internal eMMC storage.
- Record videos in .MOV file format with 10Mbps high video bit rate.
- Meets U.S. military drop-test standards and IP67 protection (non-submersible).
- 360° rotatable clip or Velcro attached for easy operation.
- Built-in microphone.
- Built-in 3120mAh Li-Polymer battery to record up to 12 hours of footage.
- Built-in battery indicator to accurately show the battery usage status.
- Multiple indicator lights and a vibrator for easy operation.
- Electronic Image Stabilization (EIS) to record smooth and stable footage.

2. System Requirements

System requirements for connecting the DrivePro™ Body 30 to a computer and for using the DrivePro™ Body Toolbox:

- A desktop or a laptop with a working USB port
 - Windows® 7
 - Windows® 8
 - Windows® 8.1
 - Windows® 10

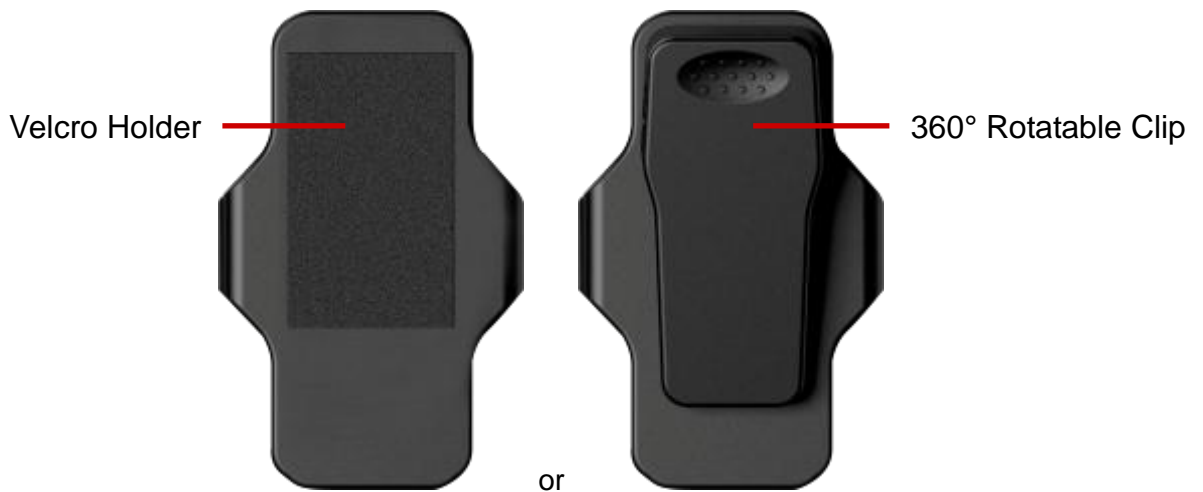
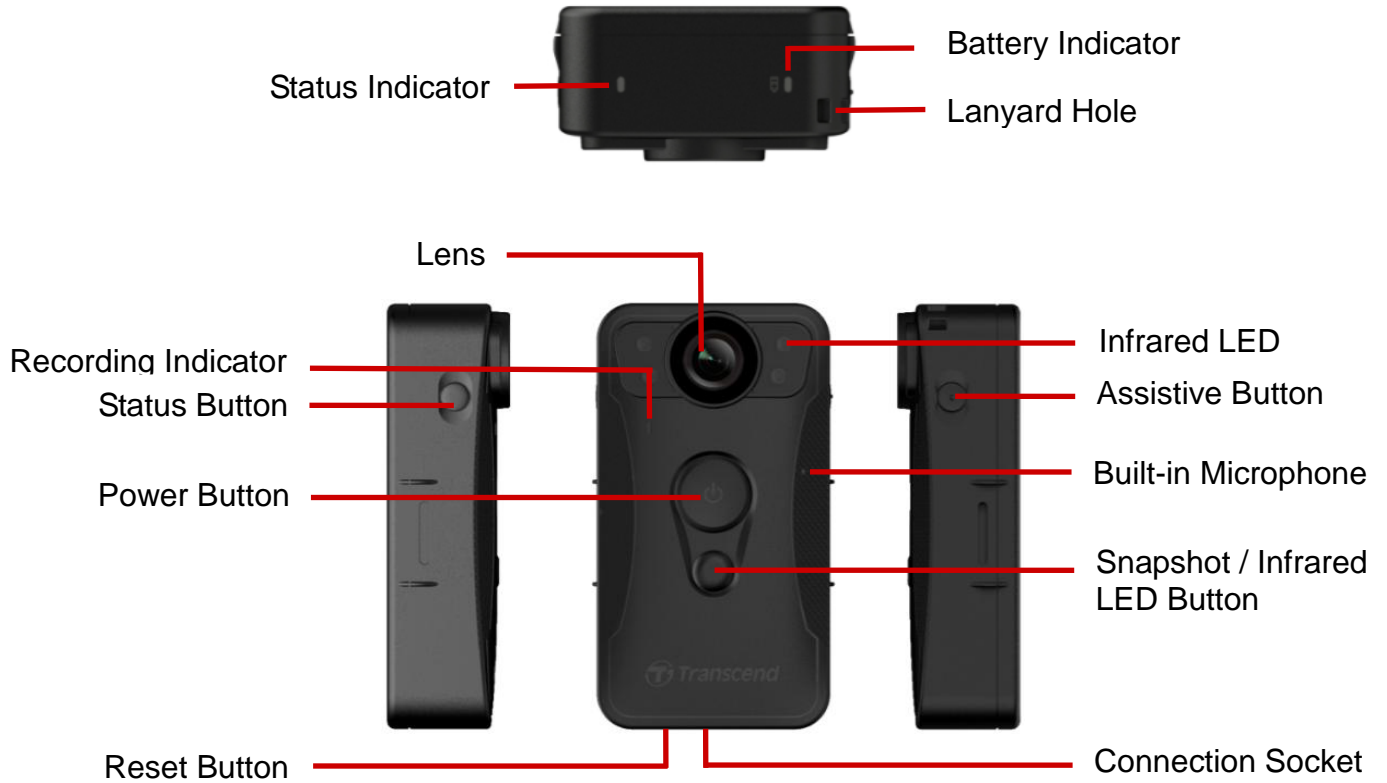
System requirements for using DrivePro™ Body App on a mobile device:

- For compatibility information, please refer to the links below:







3. Getting Started

3-1 Function Buttons



Function Buttons Description

- **Power Button** 
 - ✓ Long press once: Power on/off
 - ✓ Short press twice: Switch between Buffering Mode and Recording Mode
- **Snapshot / Infrared LED Button** 
 - ✓ Long press once: Turn on/off Infrared LED
 - ✓ Short press once: Take a snapshot; in Recording Mode, a note will be added to the recording file
- Press the  button and the  button at the same time for 5 seconds to format and power off the device. This function is disabled by default and can be enabled using the DrivePro™ Body Toolbox. **Warning! All data will be permanently removed.**
- **Status Button**
 - ✓ Long press once: Pair and connect to Bluetooth
 - ✓ Short press once: Check the battery and recording status
- **Assistive Button**
 - ✓ Long press once: Turn on/off the light indicators and buzzer (Stealth Mode)
 - ✓ Short press twice: Turn on/off the microphone (Silent Mode)

3-2 LED Indicator Table

Top View 1



Battery Indicator

Recording

LED	Status	Definition
●	Flashing	Low battery

Connected to computer/power

LED	Status	Definition
●	Solid	Charging

Checking the battery status

LED	Status	Definition
●	Solid	> 67% remaining
●	Solid	31%-67% remaining
●	Solid	< 31% remaining

Top View 2



Status Indicator

Recording

LED	Status	Definition
●	Flashing	Memory almost full
●	Flashing	Bluetooth Pairing
	Solid	Buffering mode when checking status
●	Solid	Silent mode
	Flashing	Recording mode when checking status

Connected to computer

LED	Status	Definition
●	Flashing	Transferring data

Front View



Recording Indicator

LED	Status	Definition
●	Flashing	Powering on
	Solid	Buffering mode
●	Flashing	Recording mode
	Solid	Connected to Computer

3-3 Charging the DrivePro™ Body 30

Before use, please ensure that the battery is fully charged. Charge the DrivePro™ Body 30 via the bundled 3.5mm to USB cable. A solid orange LED light is visible while charging; the orange LED light will turn off when fully charged.

To charge the DrivePro™ Body 30, you can either:

1. Connect the bundled 3.5mm to USB cable to a wall outlet with the included adapter
2. Connect the bundled 3.5mm to USB cable to a computer
3. Connect the DrivePro™ Body 30 to Transcend's Docking Station (Optional)





WARNING:


Do not use the 3.5mm to USB cable on other devices.

4. Recording Videos

4-1 Buffering Mode

To power on and start Buffering mode, long press the  button; you will hear 1 beep; the recording indicator will flash blue when powering on and then be solid in Buffering mode.


To power off, long press the  button again; you will hear 1 beep, the LED light will then turn off.

To switch between Buffering mode and Recording mode, quickly press the  button twice, you will hear 2 beeps.

Recording in Buffering mode can greatly save storage space as the files are not recorded to the internal storage.




4-2 Recording Mode

To start Recording mode, quickly press the  button twice while in Buffering mode; you will hear 2 beeps, and the recording indicator will flash red. Video files recorded in Recording mode are saved in the "VIDEO" folder and will be overwritten with loop recording enabled (This function is disabled by default and can be enabled using the DrivePro™ Body Toolbox).

One video file is saved for every 3 minutes of recording (by default).

4-3 Recording Videos with Infrared LEDs

At night or in low light conditions, the Infrared LED mode will be automatically activated; the four Infrared LEDs will then light up. You can also long press the  button to turn ON/OFF the Infrared LED mode manually. Please keep the DrivePro™ Body 30 at least 50 centimeters away from the object to avoid misjudgment of the light condition due to a reflection of LED light.

Note: Videos recorded with Infrared LEDs will be in grayscale.

5. Taking Photos

To take photos while recording, quickly press the  button, you will hear 1 beep.



Note: Photos taken with Infrared LEDs will be in grayscale.

6. Using the DrivePro™ Body App

Developed for iOS and Android devices, the free DrivePro™ Body App allows you to wirelessly adjust the settings of the camera and to take snapshots, or live stream video on your smart device.

6-1 Downloading and Installing the App

1. Search for DrivePro™ Body App from the App Store or Google Play.



2. Download and install the DrivePro™ Body App

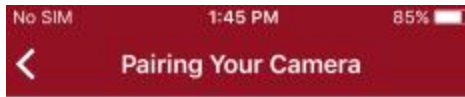
Once the installation is complete, the App will be displayed on the home screen of your device.

6-2 Connecting to the DrivePro™ Body App

1. Tap “DrivePro Body” App and turn on Bluetooth. Select “DPB30” on the App.



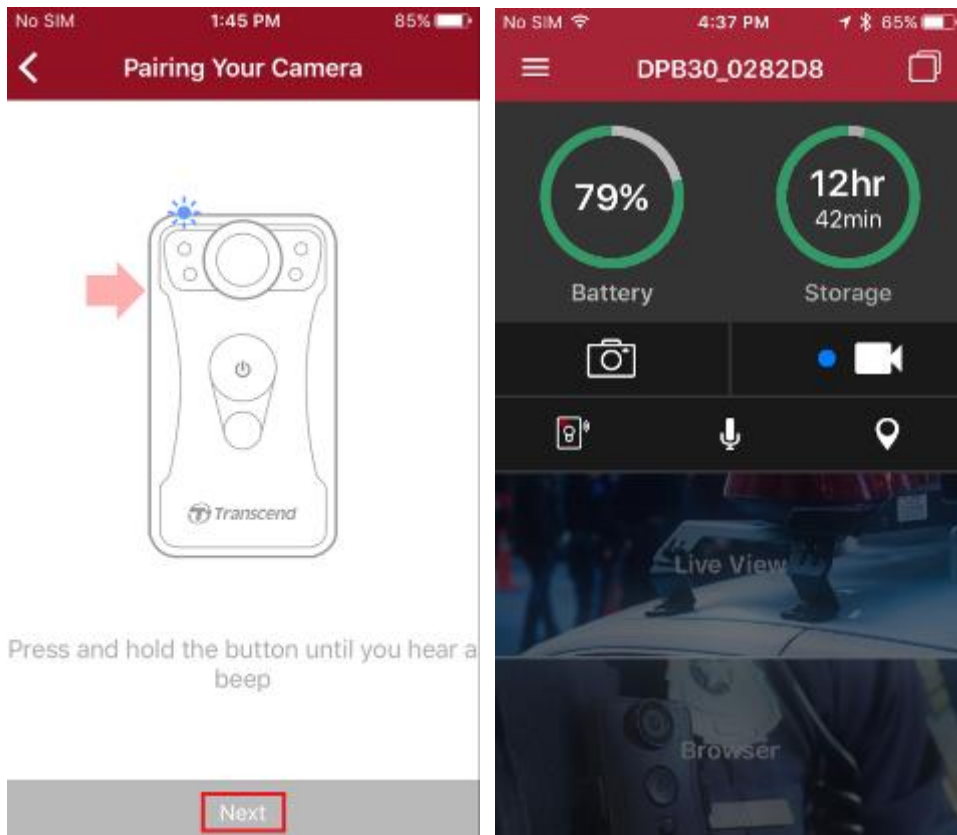
2. Power on the DrivePro™ Body by long pressing the  button. Tap “Next” to continue.



Power on the device

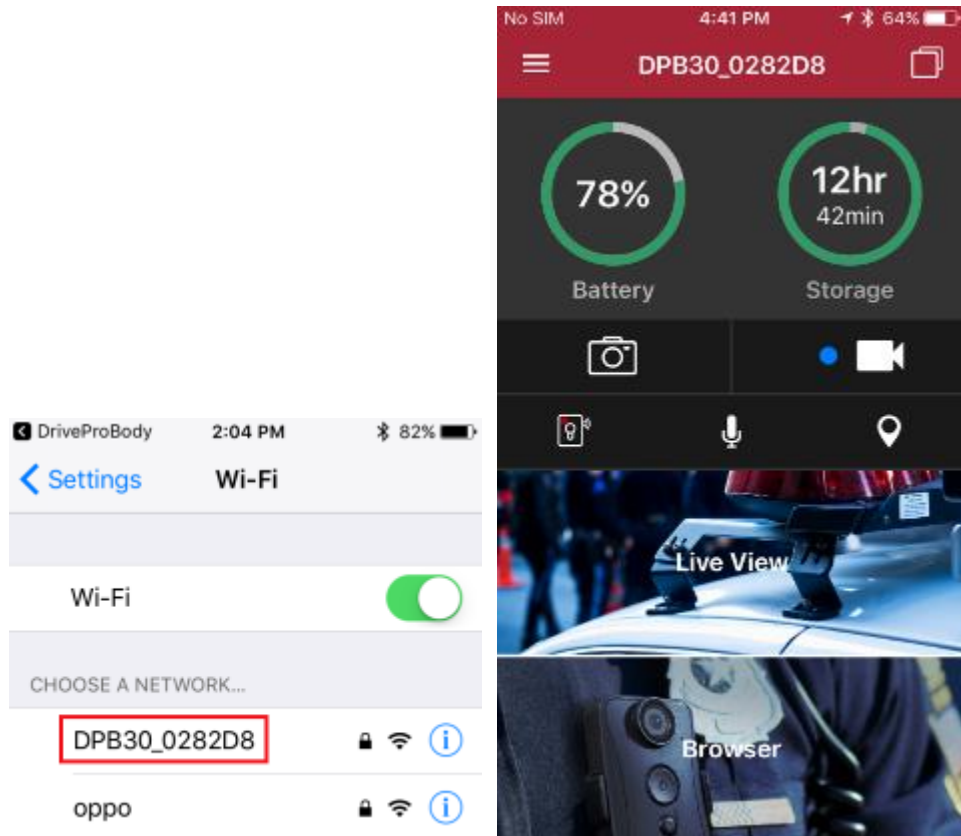


3. Long press the Status button until you hear a beep. Tap “Next” on the App to connect to Bluetooth. You will hear 3 beeps. You can now take snapshots, switch recording modes, or adjust settings via the App.

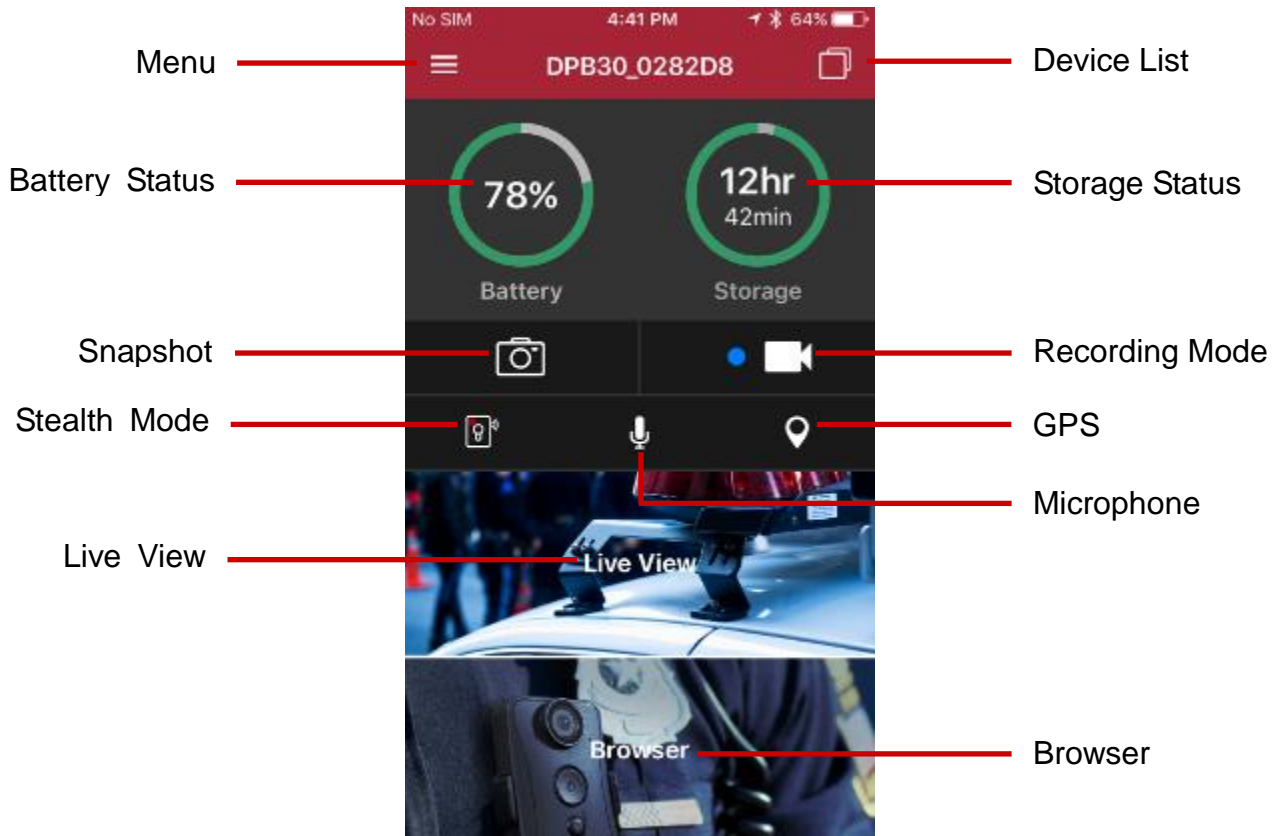



4. Tap **Live View** or **Browser** and connect to “DPB30_XXXXXX” Wi-Fi with the default

password "12345678".







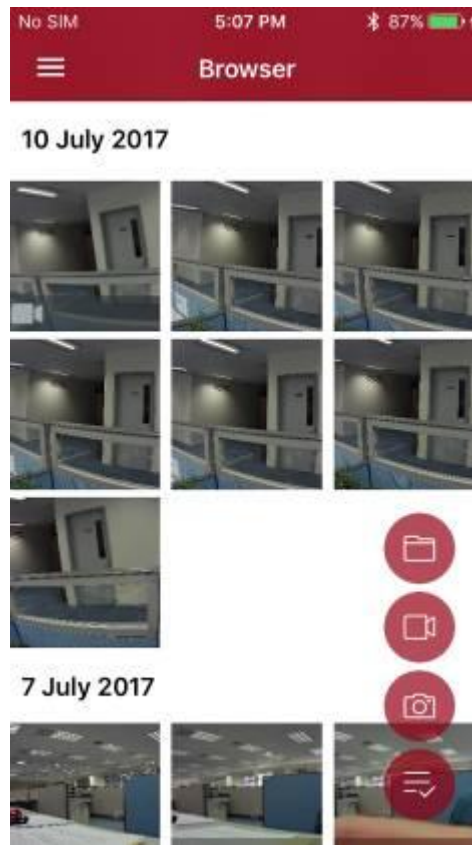
6-3 DrivePro™ Body App Home



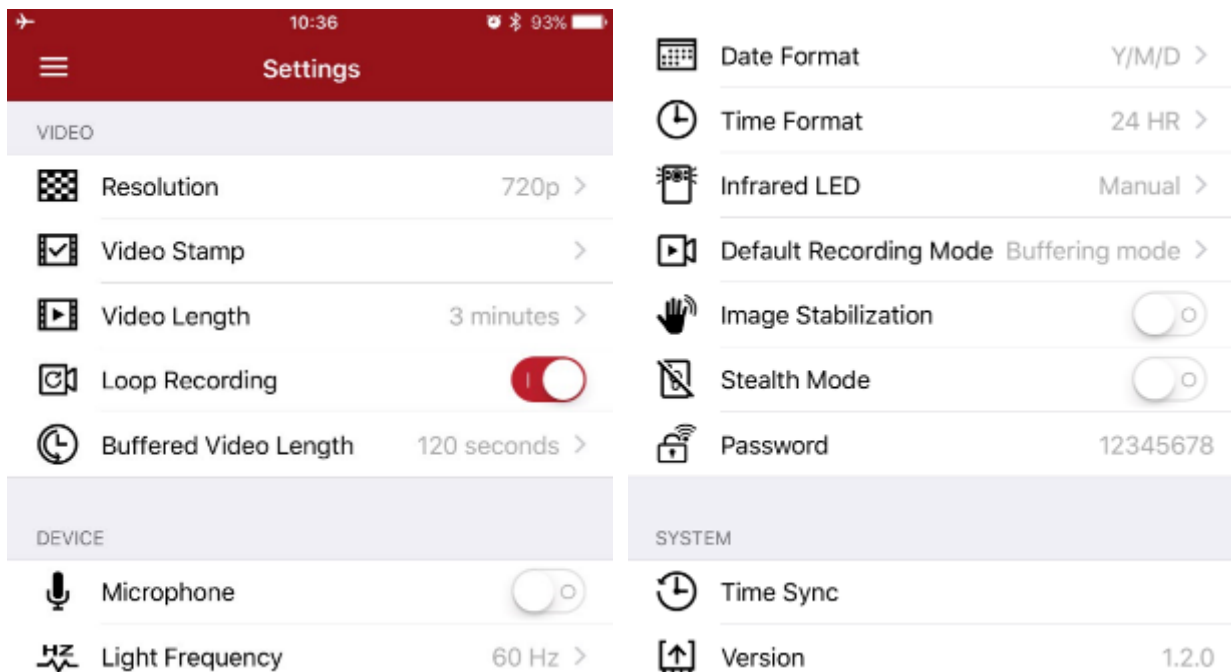
Note: The camera stops recording when you tap **Browser** or **Settings** after tapping  using the App, the front LED turns solid blue/red. The camera will resume recording when you tap **Home**.



6-4 Playing Videos and Browsing Photos

1. To play videos and browse photos, tap **Browser** on the Homepage, or tap  on the top left corner first then tap  **Browser**.
2. Tap to play the videos recorded or browse the photos. You can sort the files by tapping the   icon on the bottom right corner.



6-5 Settings



Tap  on the top left corner first then tap  to enter the Settings menu.

In the Settings menu, you can adjust the settings of video, device, Wi-Fi and System.

Menu options

VIDEO



Resolution: Set the resolution/quality for video recording.

Available options: 1080p / 720p / 480p



Video Stamp: Display the Video Label, date/time, and Watermark on the photo or video.

Available options: Disable / Enable



Video Length: Set the recording length of each recorded video file.

Available options: 3 mins / 5 mins / 10 mins



Loop Recording: Overwrite the old video files with new ones.

Available options: Disable / Enable

WARNING:



1. For best recording stability, you are suggested to back up your data using the DrivePro™ Body Toolbox each time you finish using the DrivePro™ Body 30, or format the device using the Toolbox every 3 months.
2. Please only format your DrivePro™ Body 30 using the DrivePro™ Body Toolbox.



Buffered Video Length: Set the buffered video length to record footage that happens prior to switching to Recording mode.

Available options: 30 secs / 60 secs / 90 secs / 120 secs (default)

DEVICE



Microphone: Turn on/off the microphone during video recording.

Available options: Disable / Enable



Light Frequency: Select the appropriate frequency to avoid flashing A/C light.

Available options: 50Hz / 60Hz



Date Format: Set the date format.

Available options: YY/MM/DD or MM/DD/YY or DD/MM/YY



Time Format: Select the 24 HR or AM/PM time format.

Available options: 24 HR / AM/PM



Infrared LED: Select to activate the Infrared LED manually or automatically.

Available options: Manual / Auto



Default Recording Mode: Select the default recording mode.

Available options: Buffering mode / Recording mode



Image Stabilization: Enable/Disable the image stabilization function.

Available options: Disable (default) / Enable



Stealth Mode: Turn on/off the stealth mode. When the stealth mode is on, the light indicators and buzzer are disabled.

Available options: Disable / Enable



Password: Set the Wi-Fi password to connect wirelessly to DrivePro™ Body 30 (default)

password is 12345678).

SYSTEM



Time Sync: Sync the DrivePro™ Body time with your smart device.



Version: Tap to upgrade the firmware to the latest version.

DRIVEPRO™ BODY



Device: Select your camera model.

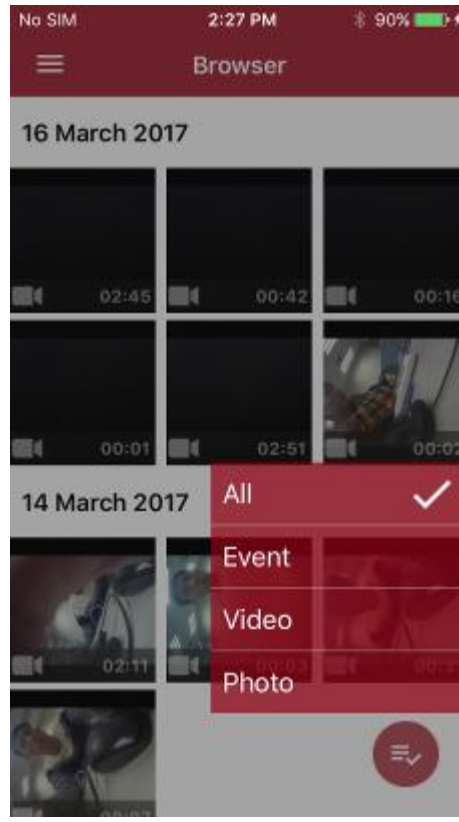


About: Display the Firmware version, End-User License Agreement, and Open Source Statement.

WARNING: NEVER remove the power cord while the firmware is being upgraded.



1. The DrivePro™ Body will shut down and the red LED light will flash while the firmware is being upgraded. After the upgrade is complete, the DrivePro™ Body will restart automatically.
2. If the DrivePro™ Body cannot be turned on due to firmware upgrade failure, please contact Transcend customer service for technical support.



7. Using the DrivePro™ Body Toolbox Software

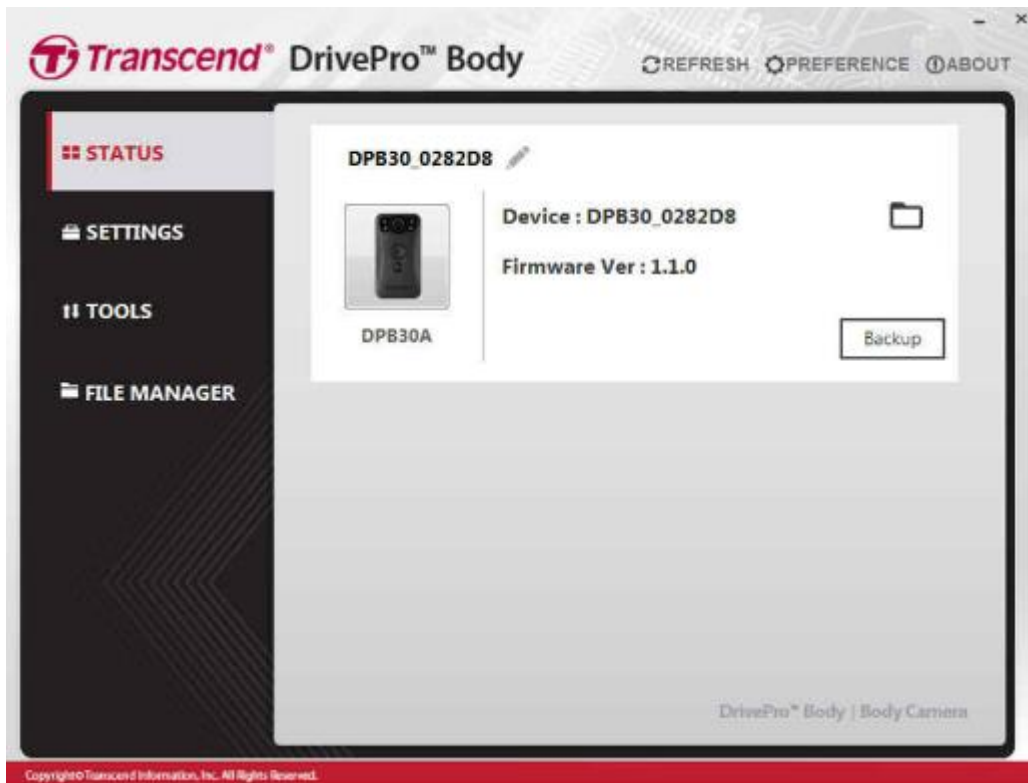
DrivePro™ Body Toolbox is a video file management software which simplifies the settings of the camera. The software features a user-friendly interface that allows Windows users to set the basic functions of the DrivePro™ Body camera.


To use for the first time, please change your password with the default password “12345678”.

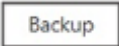
1. Download the installation files from: <http://www.transcend-info.com/downloads>
2. Install DrivePro™ Body Toolbox software on your desktop or laptop.

7-1 Status

On the Status page, the basic information of the DrivePro™ Body is displayed, including device serial number, firmware version, user label and model name.



To change the user label, click on  .

To start backing up, click on  .

To play videos and browse photos, click on  .

7-2 Settings

On the Settings page, you can adjust the Device settings and Video settings.



Device Settings

Time Format: Select the 24-hour or 12-hour AM/PM time format.

Available options: 24HR / AM/PM

Date Format: Set the date format.

Available options: YY/MM/DD or MM/DD/YY or DD/MM/YY

Microphone: Turn on/off the microphone during video recording.

Available options: on / off

Light Frequency: Select the appropriate frequency to avoid flashing A/C light.

Available options: 50Hz / 60Hz

Infrared LED: Select to activate the Infrared LED manually or automatically.

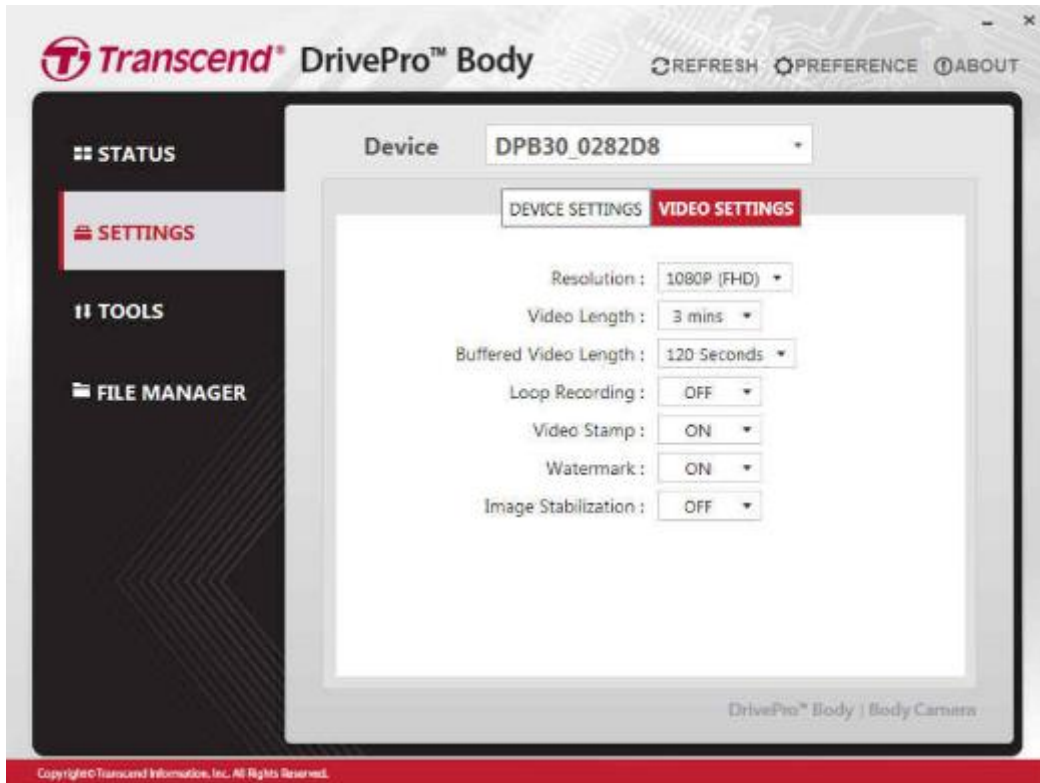
Available options: Manual / Auto

Stealth Mode: Turn on/off the stealth mode. When the stealth mode is on, the light indicators and buzzer are disabled.

Available options: Disable / Enable

Default Recording Mode: Select the default recording mode.

Available options: Buffering mode / Recording mode



Video Settings

Resolution: Set the resolution/quality for video recording.

Available options: FHD / HD

Video Length: Set the recording length of each recorded video file.

Available options: 3 mins / 5 mins / 10 mins

Buffered Video Length: Set the buffered video length to record footage that happens prior to switching to Recording mode.

Available options: 30 secs / 60 secs / 90 secs / 120 secs

Video Stamp: Display the time of the event being recorded and the video label.

Available options: on/off

Loop Recording: Overwrite the old video files with new ones.

Available options: Disable / Enable

Watermark: Display the Transcend watermark

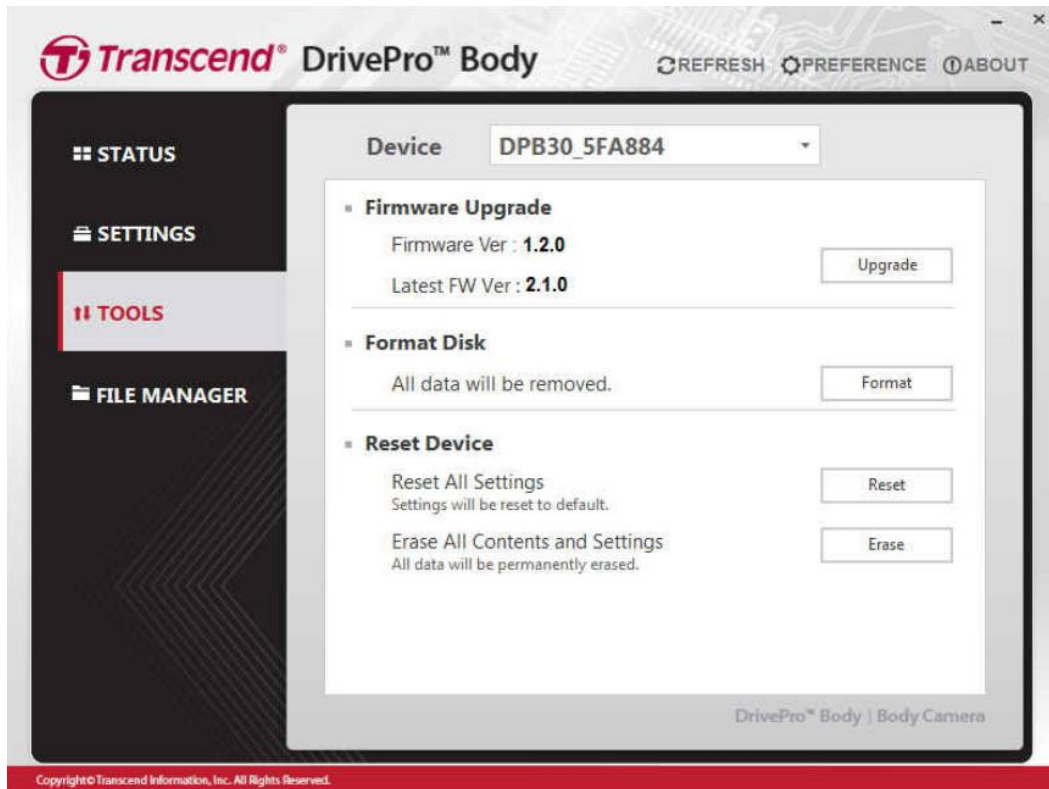
Available options: on/off

Image Stabilization: Enable/Disable the image stabilization function.

Available options: on/off

7-3 Tools

On the Tools page, you can upgrade firmware to the latest version, format disk or reset DrivePro™ Body to its default status.



Note: Formatting the disk and resetting the device will permanently remove all data.

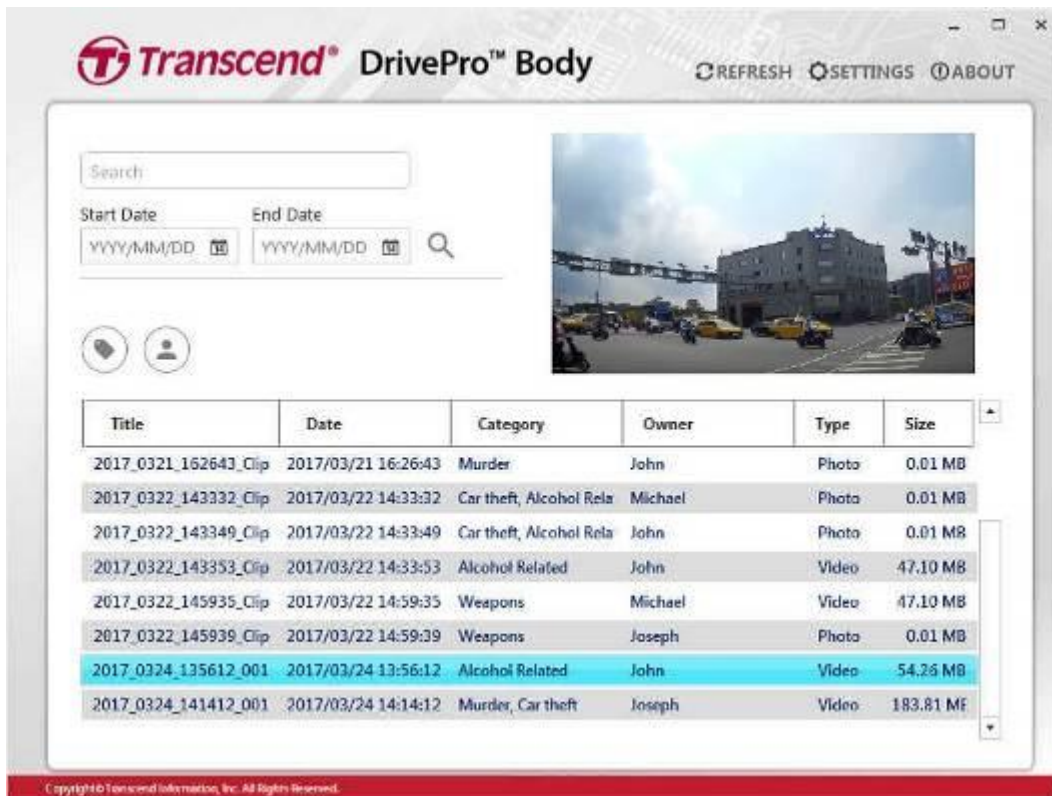
Firmware Upgrade: Upgrade your firmware to the latest version available.

Format Disk: Format your device.

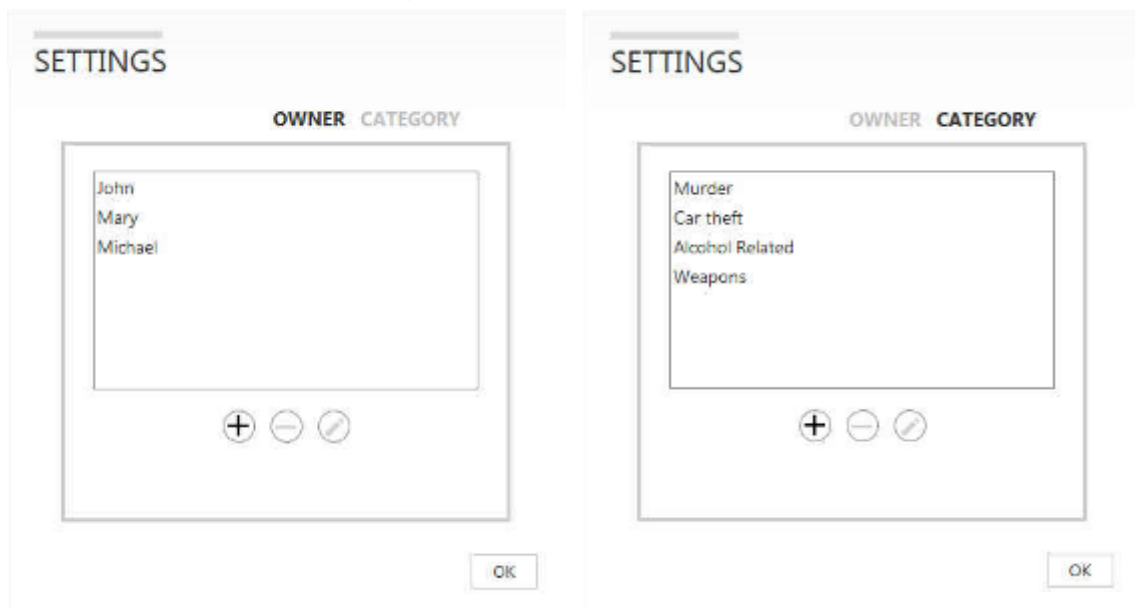
Reset Device: Reset all settings to default or erase all contents and settings.

7-4 File Manager

On the File Manager page, you can search and manage your videos and photos, or edit photos.

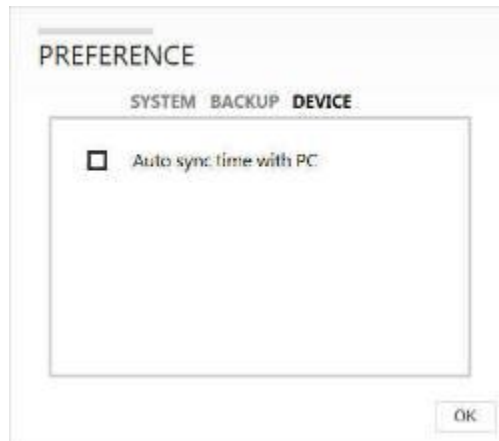
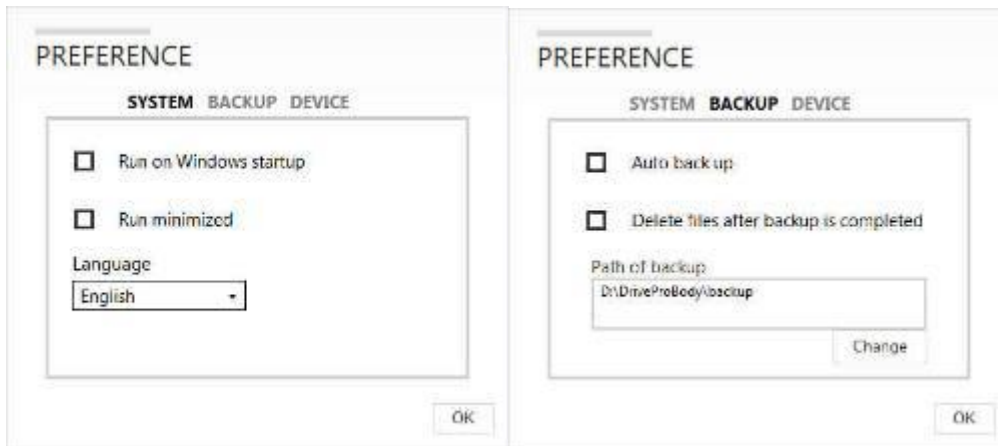


Click on **SETTINGS** on top of the page to add, delete, or edit the Owner and Category of your files.



7-5 Preference

Click on **PREFERENCE** on top of the page to adjust the settings of the DrivePro™ Body Toolbox. Check the available options below according to your preference.



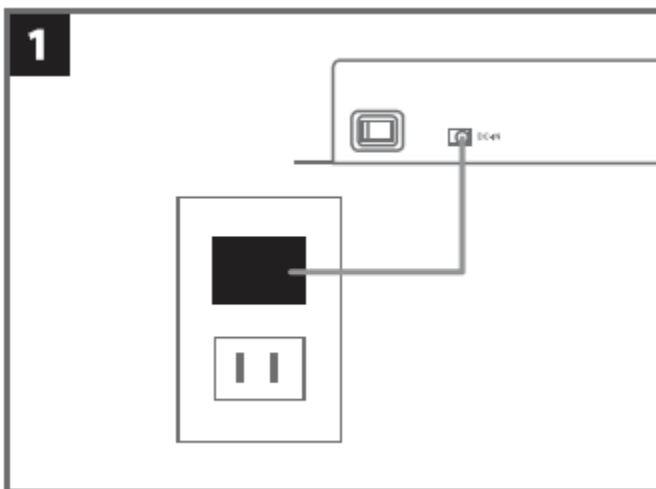
8. Docking Station (Optional)

Transcend's DPD6N networked docking station is designed specifically for the DrivePro™ Body 30 and offers a complete charging, data upload, and camera management solution. Ideal for large-scale deployments of DrivePro™ Body 30 body cameras, it allows for simultaneous charging and network-based data and camera management. Files may also be shared to an external storage device via the USB 3.0 port.

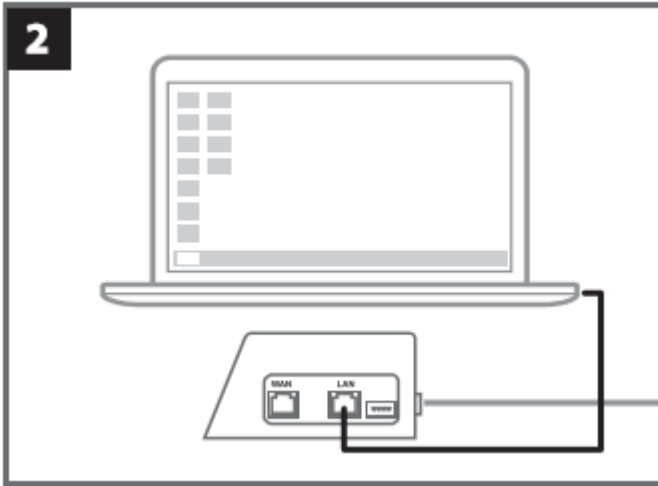


Installation Guide

1. Plug in the power adapter and power on.



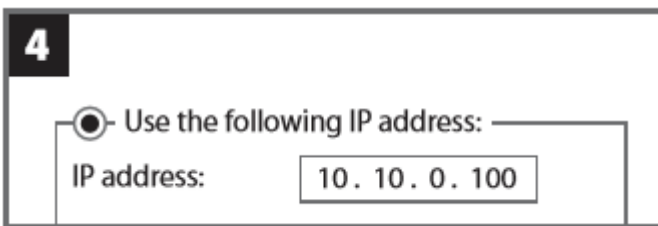
2. Connect one Ethernet cable from the LAN port to the computer's Internet port.



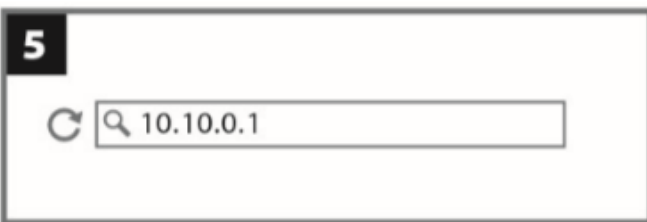
3. Connect the other Ethernet cable from the WAN port to an active Internet port.



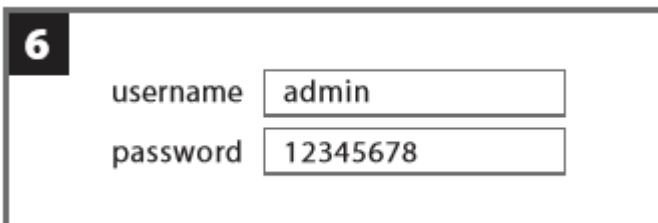
4. Change IP address to <http://10.10.0.100>.



5. Open browser and link to <http://10.10.0.1>.



6. Enter default user name "admin" and password "12345678" to log in.



7. Complete instructions on the web page.

⚙️ Language English ▼

📁 Auto back up ON

USB Storage

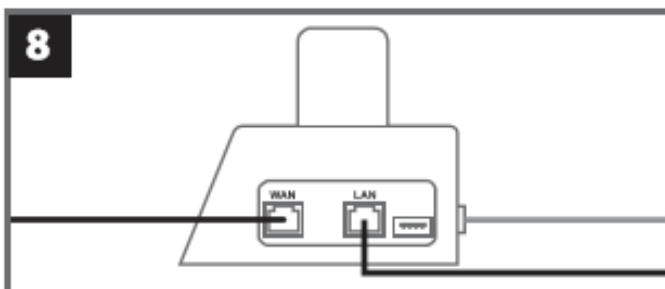
Network

Delete files after backup is completed

📁 Change Login Password

↕️ Change IP address OFF

8. Charge the DrivePro™ Body and upload data simultaneously.



9. Cautions

■ Do not use or store the DrivePro™ Body in the following places to prevent malfunction or deformation:

- In extremely hot, cold or humid places such as in a car parked in the sun
- Under direct sunlight or near a heater
- Near strong magnetic fields
- In sandy or dusty places

■ Care and storage of the DrivePro™ Body lens

- Wipe the surface of the lens clean with a soft cloth in the following cases:
 - When there are fingerprints on the lens surface
 - When the lens is exposed to salty air such as at the seaside
- Store in a well-ventilated location subject to little dirt or dust
- To prevent mold, periodically clean the lens as described above

■ Cleaning

Clean the DrivePro™ Body surface with a soft cloth slightly moistened with water, then wipe the surface with a dry cloth. Do not use any of the following as they may damage the finish or the casing:

- Chemical products such as thinner, benzine, alcohol, disposable cloths, insect repellent, sunscreen or insecticide, etc.
- Do not touch the camera with any of the above on your hand.
- Do not leave the camera in contact with rubber or vinyl for a long time.

■ Moisture condensation

- If the DrivePro™ Body is brought directly from a cold to a warm place (or vice versa), moisture may condense inside or outside the camera. This moisture condensation may cause malfunction of the DrivePro™ Body.
- If moisture condensation occurs, turn off the DrivePro™ Body and wait about 1 hour for the moisture to evaporate.

■ Bundled Velcro usage

- The bundled Velcro is recommended for raincoats, windcheaters and other plastic surfaces, but not recommended for cotton, wool or leather. If you want to use it on such fabrics, please sew it on.
- Each set of Velcro has two sides. Please adhere one side to the bundled Velcro holder and the

other side to another surface.

- Application instructions: Clean and dry surface before application. Peel tape and press firmly into place. Leave for 24 hours for best performance.

10. IP67 Protection

The camera body of the DrivePro™ Body 30 is rated at IP67, offering splash, water, and dust resistance. However, splash, water, and dust resistance are not permanent conditions and resistance might decrease as a result of normal wear. Liquid damage is not covered under warranty.



WARNING: DrivePro™ Body 30 is not water resistant when connected to the power cable.

Failure caused from incorrect use is not covered by the limited warranty.

- Do not use the DrivePro™ Body 30 in water as it is not waterproof.
- Do not use the DrivePro™ Body 30 in high temperature and high humidity environments (i.e. saunas, steam and shower rooms).
- Do not use the DrivePro™ Body 30 for a long time in heavy rains to avoid the moisture from penetrating. Make sure the power cable, adapter and connection socket are completely dry before charging.

11. Package Contents

- DrivePro™ Body 30



- Adapter



- 3.5mm to USB cable



- Velcro



■ Clip & Velcro holders

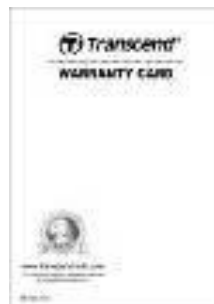


Note: When removing the DrivePro™ Body from the holder, please pull from left and right side. When reassembling, make sure the DrivePro™ Body is securely attached to the holder.

■ Quick Start Guide



■ Warranty Card



12. Specifications

Connect Interface	USB 2.0
Storage	Internal eMMC storage
Dimensions	95.9 mm (L) × 52.2 mm (W) × 27.6 mm (H) 3.78" (L) × 2.06" (W) × 1.09" (H)
Weight	130g 4.6 oz
Battery	Li-Polymer 3120mAh
Power Supply	Input: AC100V-240V, 50-60Hz, 0.4A Max Output: DC5V 2A
Recording Life	Up to 12 hours*
Operating Temperature	-20°C (-4°F) ~ 65°C (149°F) 5°C (41°F) ~ 35°C (95°F) when charging with the adapter
Video Format	H.264 (MOV: up to 1920x1080 30fps)
Ingress Protection	IP67
Shock Resistance	MIL-STD-810G 516.6-Transit Drop Test
Lens	F/2.0, 130° wide angle
Resolution / Frame Rate	Full HD (1920 x 1080) / 30fps
Certification	CE, FCC, BSMI, NCC, MIC
Warranty	2-Year Limited

* Environmental conditions may increase or decrease specifications

13. Frequently Asked Questions

If you have any question or a problem occurs to your DrivePro™ Body 30, please first check the instructions listed below before sending your DrivePro™ for repair. If you cannot find any ideal solution to your question below, please consult your dealer, service center, or local Transcend branch office for further help. You can also visit Transcend website (<http://www.transcend-info.com/>) for more FAQs and Technical Support services ([http://www.transcend-info.com/Support/contact form](http://www.transcend-info.com/Support/contact_form)).

■ My computer operating system cannot detect my DrivePro™ Body

Please check the followings:

1. Is your DrivePro™ Body properly connected to the USB port? If not, unplug and connect it again. Make sure that both ends of the USB cables are properly connected as shown in the User's Manual.
2. Is your DrivePro™ Body connected to the Mac keyboard? If yes, try to plug it in an available USB port on your Mac Desktop directly.
3. Is the computer's USB ports enabled? If not, refer to the user's manual of your computer (or motherboard) to enable them.

■ None of the DrivePro™ Body buttons are responding.

Please press the Reset button on the bottom of the DrivePro™ Body with a pointed object such as a paper clip.

■ Is the DrivePro™ Body shockproof and waterproof?

The DrivePro™ is IP67 dust and water protected and meets rigorous U.S. military drop-test standards*.

*Based on MIL-STD-810G 516.6-Transit Drop Test

14. Recycling and Environmental Protection



Recycling the Product (WEEE): Your product is designed and manufactured with high quality materials and components, which can be recycled and reused. When you see the crossed-out wheel bin symbol attached to a product, it means that the product is covered by the European Directive 2002/96/EC:

Never dispose of your product with other household waste. Please inform yourself about the local rules on the separate collection of electrical and electronic products. The correct disposal of your old product helps prevent potential negative consequences on the environment and human health.



Battery Disposal: Your product contains a built-in rechargeable battery covered by the European Directive 2006/66/EC, which cannot be disposed of with normal household waste. Please inform yourself about the local rules on separate collection of batteries. The correct disposal of batteries helps prevent potentially negative consequences on the environment and human health.

For products with non-exchangeable built in batteries: The removal of (or the attempt to remove) the battery invalidates the warranty. This procedure is only to be performed at the end of the product's life.

CAUTION

RISK OF EXPLOSION IF BATTERY IS REPLACED BY AN INCORRECT TYPE.
DISPOSE OF USED BATTERIES ACCORDING TO THE INSTRUCTIONS.

15. Two-year Limited Warranty

This product is covered by a Two-year Limited Warranty. Should your product fail under normal use within two years from the original purchase date, Transcend will provide warranty service pursuant to the terms of the Transcend Warranty Policy. Proof of the original purchase date is required for warranty service. Transcend will inspect the product and in its sole discretion repair or replace it with a refurbished product or functional equivalent. Under special circumstances, Transcend may refund or credit the current value of the product at the time the warranty claim is made. The decision made by Transcend shall be final and binding upon you. Transcend may refuse to provide inspection, repair or replacement service for products that are out of warranty, and will charge fees if these services are provided for out-of-warranty products.

Limitations

Any software or digital content included with this product in disc, downloadable, or preloaded form, is not covered under this Warranty. This Warranty does not apply to any Transcend product failure caused by any accident, abuse, mishandling or improper usage (including use contrary to the product description or instructions, outside the scope of the product's intended use, or for tooling or testing purposes), alteration, abnormal mechanical or environmental condition (including prolonged exposure to humidity), acts of nature, improper installation (including connection to incompatible equipment), or problems with electrical power (including undervoltage, overvoltage, or power supply instability). In addition, damage or alteration of warranty, quality or authenticity stickers, and/or product serial or electronic numbers, unauthorized repair or modification, or any physical damage to the product or evidence of opening or tampering with the product casing will also void this Warranty. This Warranty shall not apply to the transferees of Transcend products and/or anyone who stands to profit from this Warranty without Transcend's prior written authorization. This Warranty only applies to the product itself, and excludes integrated LCD panels, rechargeable batteries, and all product accessories (such as card adapters, cables, earphones, power adapters, and remote controls).

Transcend Warranty Policy

Please visit www.transcend-info.com/warranty to view the Transcend Warranty Policy. By using the product, you agree that you accept the terms of the Transcend Warranty Policy, which may be amended from time to time.



Transcend Information, Inc.

www.transcend-info.com

*The Transcend logo is a registered trademark of Transcend Information, Inc.

*The specifications mentioned above are subject to change without notice.

*All logos and marks are trademarks of their respective companies.

16. GNU General Public License (GPL) Disclosure

Firmware incorporated into this product and/or software used for this product may include third party copyrighted software licensed under the GPL (hereinafter referred to as "GPL Software"). In accordance with the GPL, if applicable: 1) the source code for the GPL Software may be downloaded at no charge or obtained on CD for a nominal charge by calling Customer Support within three years of the date of purchase; 2) you may copy, re-distribute and/or modify the GPL Software under the terms of the GNU General Public License as below or any later version, which may be obtained at <http://www.gnu.org/licenses/gpl.html>; 3) the GPL Software is distributed WITHOUT ANY WARRANTY, without even implied warranty of MERCHANTABILITY or FITNESS FOR A PARTICULAR PURPOSE. The entire risk as to the quality and performance of the GPL Software is with you. Transcend does not provide any support for the GPL software.

17. End-User License Agreement (EULA)

Software license terms and conditions

1. **Generally.** Transcend Information, Inc. ("Transcend") is willing to grant the following license to install or use the software and/or firmware ("Licensed Software") pursuant to this End-User License Agreement ("Agreement"), whether provided separately or associated with a Transcend product ("Product"), to the original purchaser of the Product upon or with which the Licensed Software was installed or associated as of the time of purchase ("Customer") only if Customer accepts all of the terms and conditions of this Agreement. PLEASE READ THESE TERMS CAREFULLY. USING THE SOFTWARE WILL CONSTITUTE CUSTOMER'S ACCEPTANCE OF THE TERMS AND CONDITIONS OF THIS AGREEMENT. IF YOU DO NOT AGREE TO THE TERMS AND CONDITIONS OF THIS AGREEMENT, DO NOT INSTALL OR USE THE LICENSED SOFTWARE.

2. **License Grant.** Transcend grants to Customer a personal, non-exclusive, non-transferable, non-distributable, non-assignable, non-sublicensable license to install and use the Licensed Software on the Product in accordance with the terms and conditions of this Agreement.

3. **Intellectual Property Rights.** As between Transcend and Customer, the copyright and all other intellectual property rights in the Licensed Software are the property of Transcend or its supplier(s) or licensor(s). Any rights not expressly granted in this License are reserved to Transcend.

4. **License Limitations.** Customer may not, and may not authorize or permit any third party to: (a) use the Licensed Software for any purpose other than in connection with the Product or in a manner inconsistent with the design or documentations of the Licensed Software; (b) license, distribute, lease, rent, lend, transfer,

assign or otherwise dispose of the Licensed Software or use the Licensed Software in any commercial hosted or service bureau environment; (c) reverse engineer, decompile, disassemble or attempt to discover the source code for or any trade secrets related to the Licensed Software, except and only to the extent that such activity is expressly permitted by applicable law notwithstanding this limitation; (d) adapt, modify, alter, translate or create any derivative works of the Licensed Software; (e) remove, alter or obscure any copyright notice or other proprietary rights notice on the Licensed Software or Product; or (f) circumvent or attempt to circumvent any methods employed by Transcend to control access to the components, features or functions of the Product or Licensed Software.

5. Copying. Customer may not copy the Licensed Software except that one copy of any separate software component of the Licensed Software may be made to the extent that such copying is necessary for Customer's own backup purposes.

6. Open Source. The Licensed Software may contain open source components licensed to Transcend pursuant to the license terms specified as below,

- (a) GNU General Public License (GPL), the terms of which is currently available at <http://www.gnu.org/licenses/gpl.html> ;
- (b) GNU Lesser General Public License (LGPL), the terms of which is currently available at <http://www.gnu.org/copyleft/lesser.html> ; and/or
- (c) Code Project Open License (CPOL), the terms of which is currently available at <http://www.codeproject.com/info/cpol10.aspx>

The above license terms will control solely with respect to the open source components. In the event that this Agreement conflicts with the requirements of the above one or more terms with respect to the use of the corresponding open source components, Customer agrees to be bound by such one or more license terms.

7. Disclaimer. TRANSCEND MAKES NO WARRANTY AND REPRESENTATIONS ABOUT THE SUITABILITY, RELIABILITY, AVAILABILITY, TIMELINESS, LACK OF VIRUSES OR OTHER HARMFUL COMPONENTS AND ACCURACY OF THE INFORMATION, LICENSED SOFTWARE, PRODUCTS, SERVICES AND RELATED GRAPHICS CONTAINED WITHIN THE LICENSED SOFTWARE FOR ANY PURPOSE. ALL SUCH INFORMATION, LICENSED SOFTWARE, PRODUCTS, SERVICES AND RELATED GRAPHICS ARE PROVIDED "AS IS" WITHOUT WARRANTY OF ANY KIND. TRANSCEND HEREBY DISCLAIMS ALL WARRANTIES AND CONDITIONS WITH REGARD TO THIS INFORMATION, LICENSED SOFTWARE, PRODUCTS, SERVICES AND RELATED GRAPHICS, INCLUDING ALL IMPLIED WARRANTIES AND CONDITIONS OF MERCHANTABILITY, FITNESS FOR A PARTICULAR PURPOSE, WORKMANLIKE EFFORT, TITLE, AND NON-INFRINGEMENT.

IN NO EVENT SHALL TRANSCEND BE LIABLE FOR ANY DIRECT, INDIRECT, PUNITIVE, INCIDENTAL, SPECIAL, CONSEQUENTIAL DAMAGES OR ANY DAMAGES WHATSOEVER INCLUDING, WITHOUT LIMITATION, DAMAGES FOR LOSS OF USE, DATA OR PROFITS, ARISING OUT OF OR IN ANY WAY

CONNECTION WITH THE USE, PERFORMANCE OR ACCURACY OF THE LICENSED SOFTWARE OR WITH THE DELAY OR INABILITY TO USE THE LICENSED SOFTWARE, OR THE PRODUCT WITH WHICH THE LICENSED SOFTWARE IS ASSOCIATED, WHETHER BASED ON CONTRACT, TORT, NEGLIGENCE, STRICT LIABILITY OR OTHERWISE, EVEN IF TRANSCEND HAS BEEN ADVISED OF THE POSSIBILITY OF SUCH DAMAGES.

8. Limitation of Liability. IN ANY CASE, TRANSCEND 'S LIABILITY ARISING OUT OF OR IN CONNECTION WITH THIS AGREEMENT WILL BE LIMITED TO THE TOTAL AMOUNT ACTUALLY AND ORIGINALLY PAID AT RETAIL BY CUSTOMER FOR THE PRODUCT. The foregoing Disclaimer and Limitation of Liability will apply to the maximum extent permitted by applicable law. Some jurisdictions do not allow the exclusion or limitation of incidental or consequential damages, so the exclusions and limitations set forth above may not apply.

9. Termination. Transcend may, in addition to any other remedies available to Transcend, terminate this Agreement immediately if Customer breaches any of its obligations under this Agreement.

10. Miscellaneous. (a) This Agreement constitutes the entire agreement between Transcend and Customer concerning the subject matter hereof, and it may only be modified by a written amendment signed by an authorized executive of Transcend. (b) Except to the extent applicable law, if any, provides otherwise, this Agreement will be governed by the law of the Republic of China, excluding its conflict of law provisions. (c) If any part of this Agreement is held invalid or unenforceable, and the remaining portions will remain in full force and effect. (d) A waiver by either party of any term or condition of this Agreement or any breach thereof, in any one instance, will not waive such term or condition or any subsequent breach thereof. (e) Transcend may assign its rights under this Agreement without condition. (f) This Agreement will be binding upon and will inure to the benefit of the parties, their successors and permitted assigns.

18. Federal Communications Commission (FCC)

Statement

This device complies with Part 15 FCC Rules. Operation is subject to the following two conditions: (1) This device may not cause harmful interference. (2) This device must accept any interference received including interference that may cause undesired operation.

This Equipment has been tested and found to comply with the limits for a Class B digital device, pursuant to Part 15 of the FCC rules. These limits are designed to provide reasonable protection against harmful interference in a residential installation. This equipment generates, uses and can radiate radio frequency energy and, if not installed and used in accordance with the instructions, may cause harmful interference to radio communications. However, there is no guarantee that interference will not occur in a particular installation. If this equipment does cause harmful interference to radio or television reception, which can be determined by turning the equipment off and on, the user is encouraged to try to correct the interference by one or more of the following measures:

- Reorient or relocate the receiving antenna.
- Increase the separation between the equipment and receiver.
- Connect the equipment into an outlet on a circuit different from that to which the receiver is connected.
- Consult the dealer or an experienced radio/TV technician for help.

RF Exposure Information (SAR)

This device meets the government's requirements for exposure to radio waves. This device is designed and manufactured not to exceed the emission limits for exposure to radio frequency (RF) energy set by the Federal Communications Commission of the U.S. Government.

The exposure standard for wireless devices employing a unit of measurement is known as the Specific Absorption Rate, or SAR. The SAR limit set by the FCC is 1.6W/kg.

The FCC has granted an Equipment Authorization for this device with all reported SAR levels evaluated as in compliance with the FCC RF exposure guidelines. SAR information on this device is on file with the FCC and can be found under the Display Grant section of www.fcc.gov/oet/ea/fccid after searching on FCC ID: A4Z-B001E.