



2-in-1 Kitchen Mount Stand

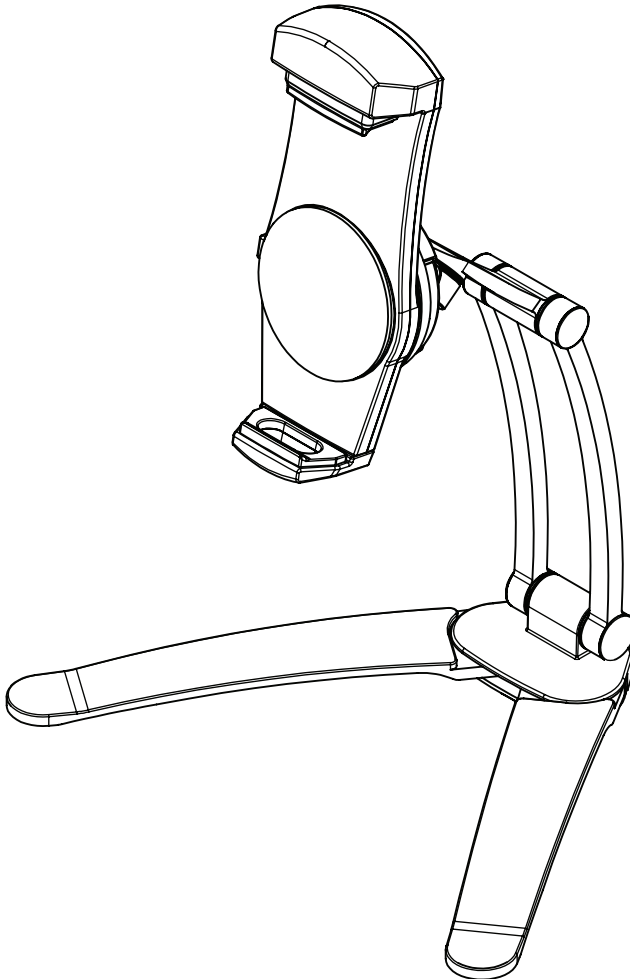
for 7–13 Inch Tablets

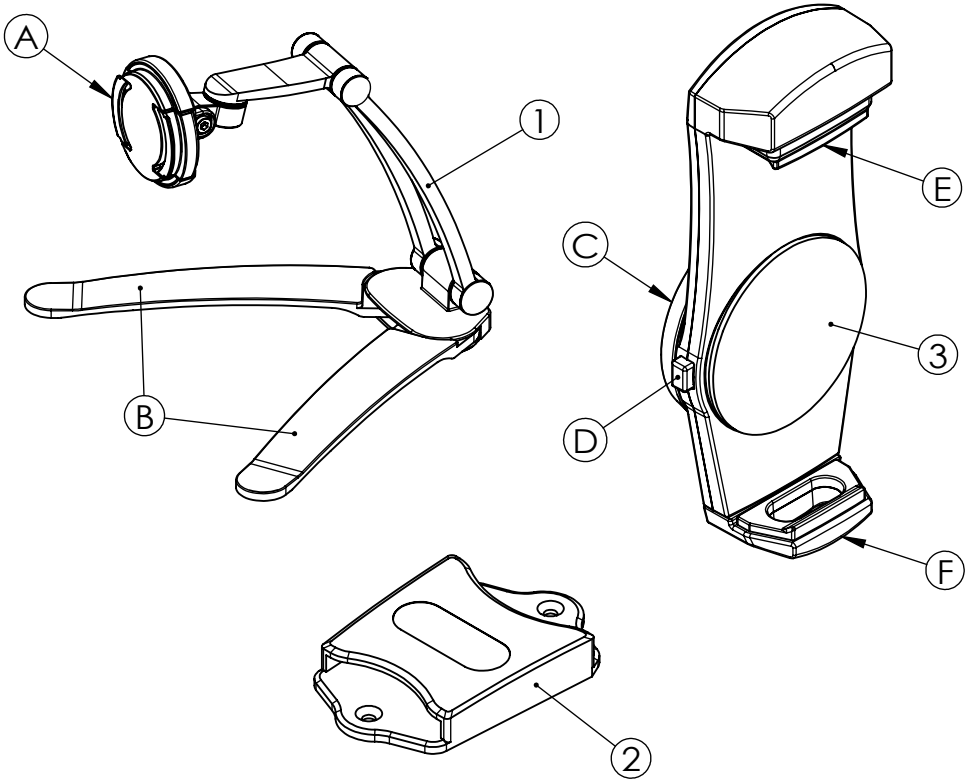
PAD-KMS/KMSB

INSTRUCTION MANUAL

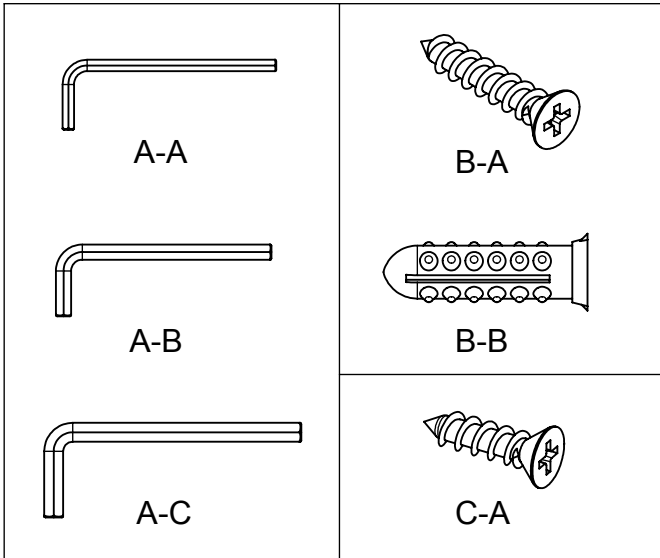
Thank you for choosing CTA Digital's product. We hope that you will enjoy using it. Please follow the guidelines and instructions as laid out in this instruction manual.

****Note -** Hinges may get looser and droop over time. Please tighten screws for optimum usage and efficiency.





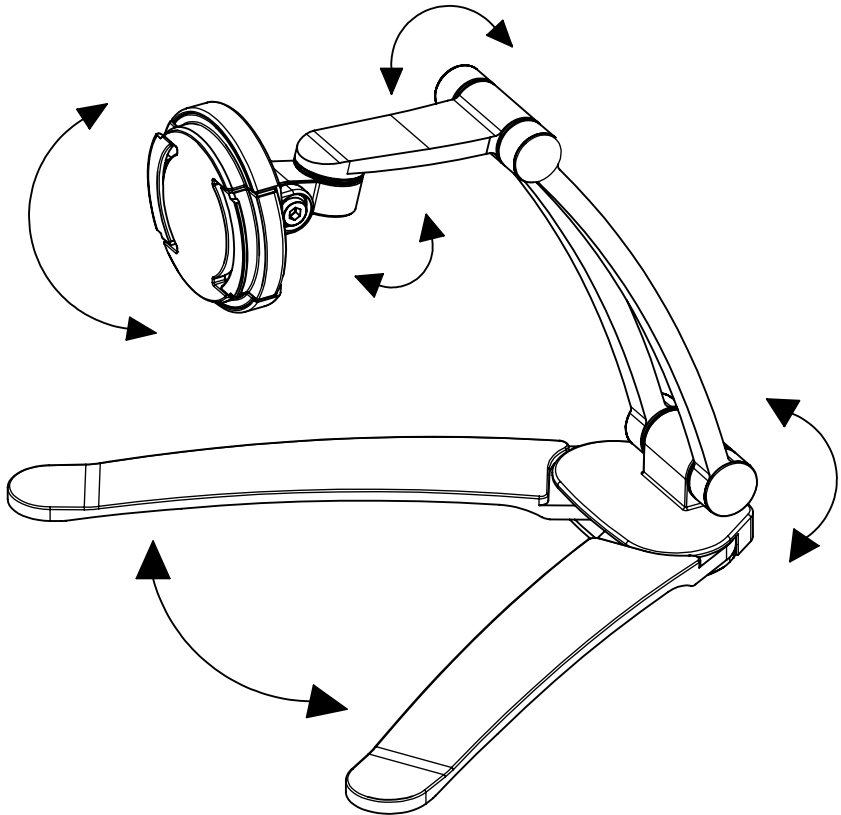
**Note - Hinges may get looser and droop over time. Please tighten screws for optimum usage and efficiency.



Product Component		
Item	Description	Qty.
1	iPKD Stand	1
2	iPKD Mount Base	2
3	Universal Holder	1
Hardware Kit		
A-A	3mm Allen Wrench	1
A-B	4mm Allen Wrench	1
A-C	5mm Allen Wrench	1
B-A	Ø5*1" Wood Screw	2
B-B	White Anchor	2
C-A	Ø5*19mm Wood Screw	2

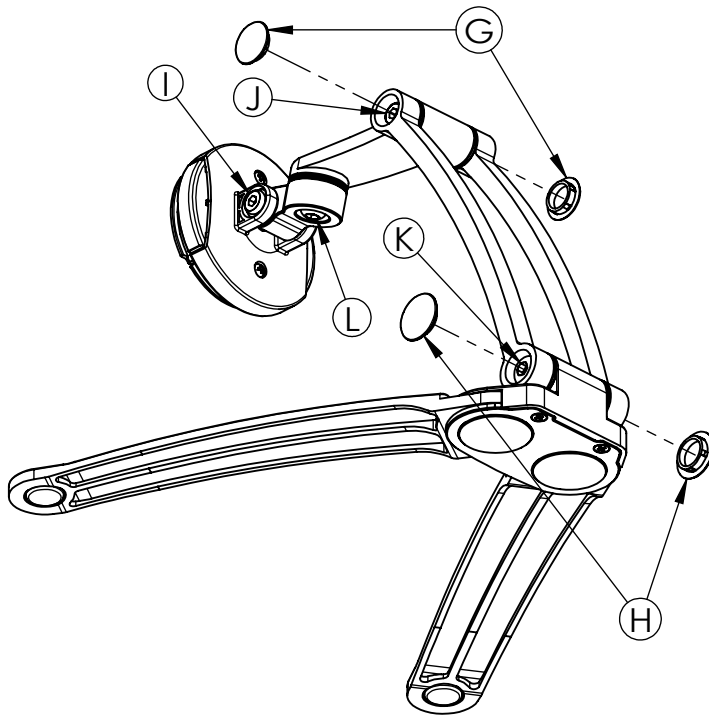
Special Function	
Item	Description
A	Attachment Button
B	iPKD Legs
C	Attachment Socket
D	Button for Vertical Extension
E	Up Bracket
F	Down Bracket

Diagram of Operable Parts



**Note - Hinges may get looser and droop over time. Please tighten screws for optimum usage and efficiency.

Joint adjustment



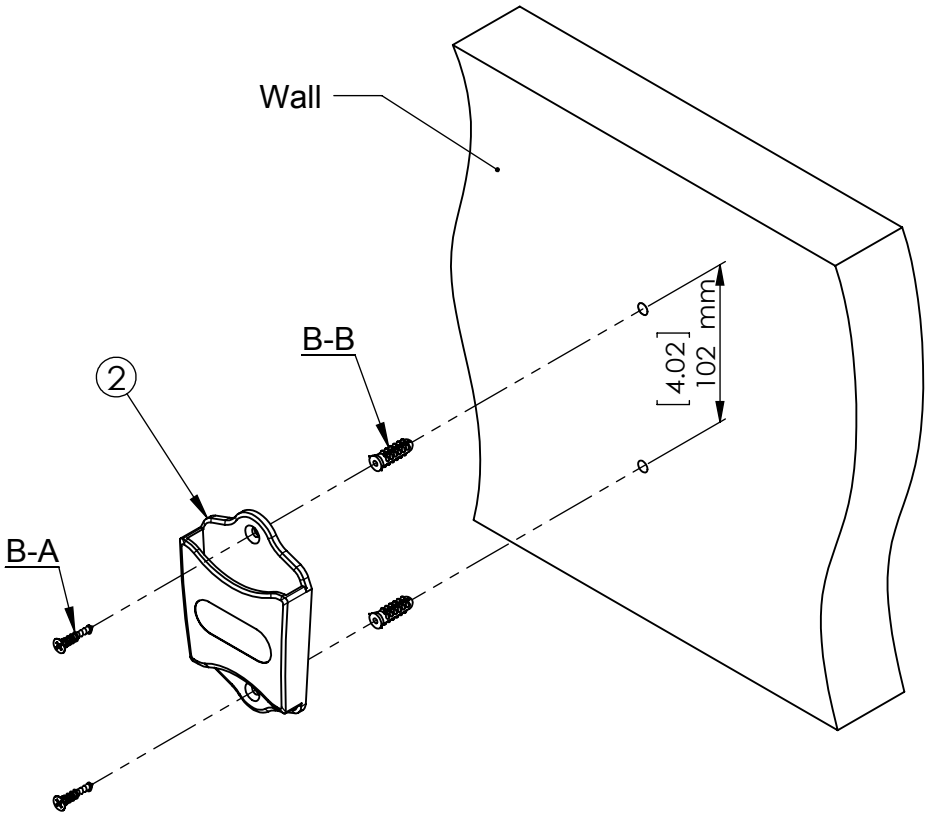
※Please adjust the tightness of the joints when they are loose after use for a while.

Use "A-A" + "A-B" to adjust the tightness of ① & ② .

Use "A-B" + "A-C" to adjust ③ .

Use "A-B" to adjust ④ .

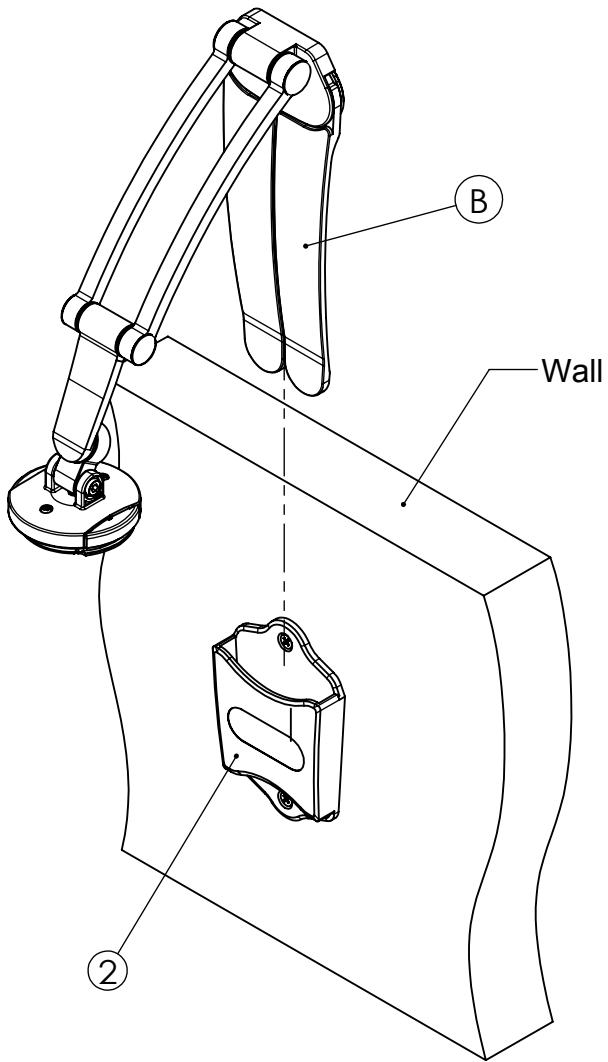
(Please remove ⑤ & ⑥ to adjust ② & ③ and install them back on their positions when done.)



Mount Base Installation :

1. Drill hole of 7*30mm and then push B-B into wall. Use B-A to screw ② .

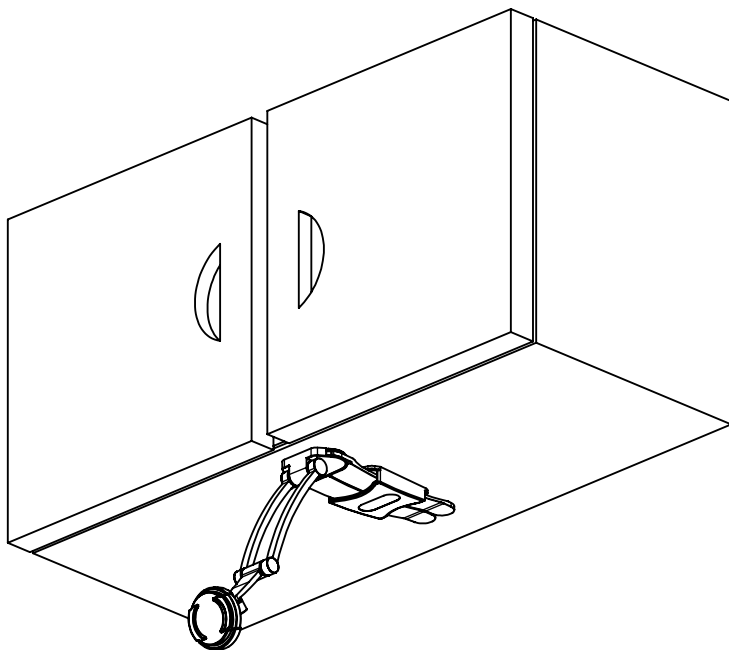
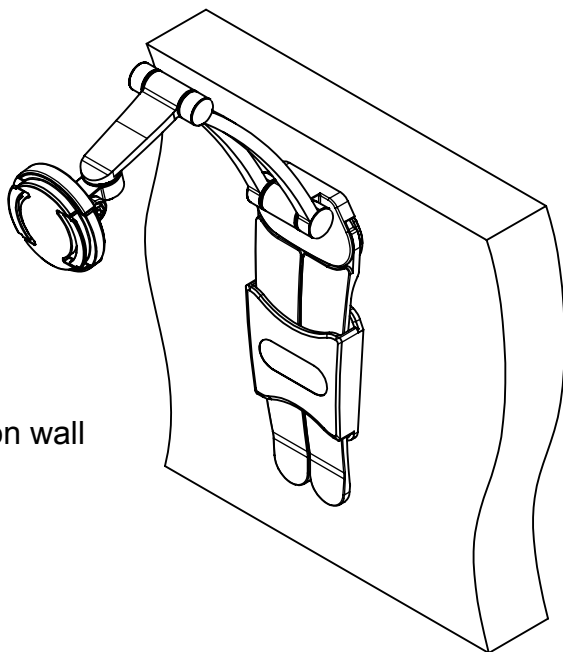
※ If to install ② on wood wall or cabinet, drill hole of $\phi 4*20$ mm.
Use C-A instead of B-A. There is no need to use B-B.



2. Fold (B) and insert it into (2) .

* Note : After attaching, please check if these two items are fastened well for preventing tablet sliding and damaged.

Mount Base on wall

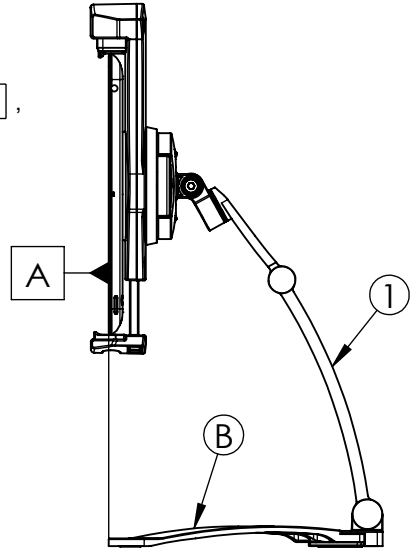


Mount Base under cabinet

Note for Table-top Stand

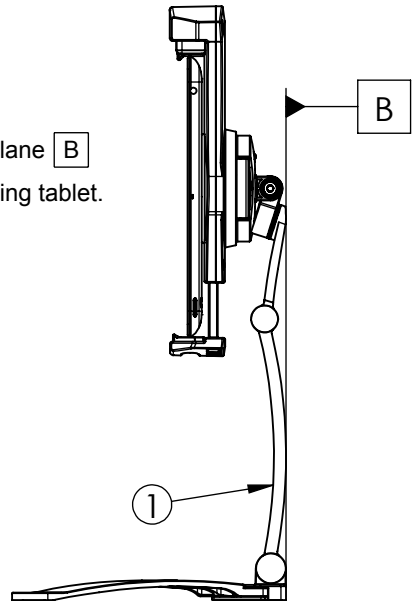
Forward position :

※ Do not let tablet exceed the front end of (B) , plane (A) ,
to prevent (1) from toppling and damaging tablet.

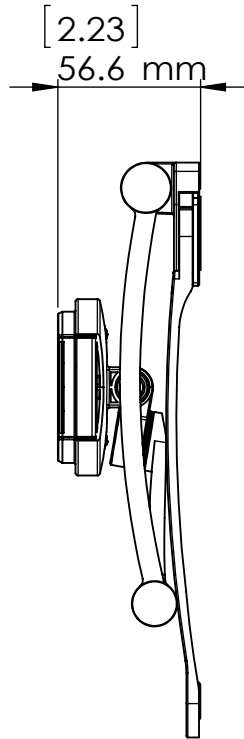
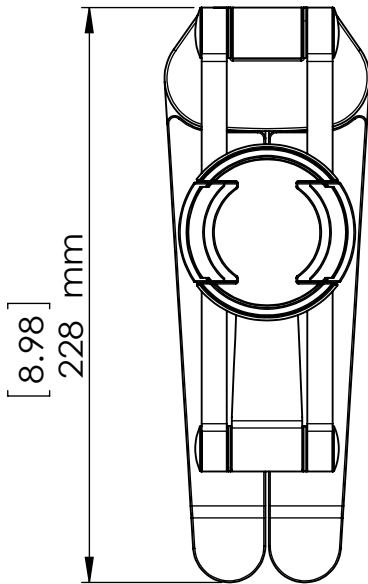
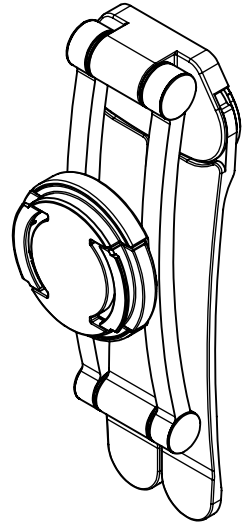
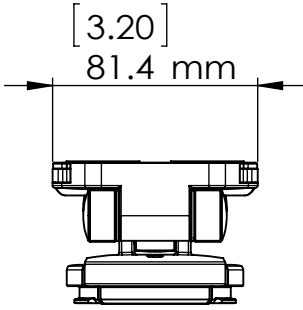


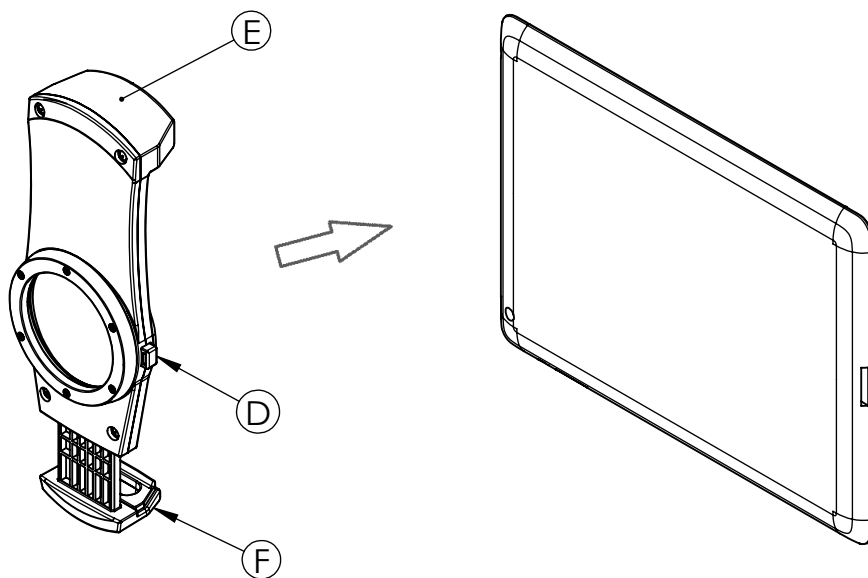
Backward position :

※ When in backward position, do not let (1) exceed plane (B)
to prevent (1) from topping backwardly and damaging tablet.



Dimension of Folded Stand



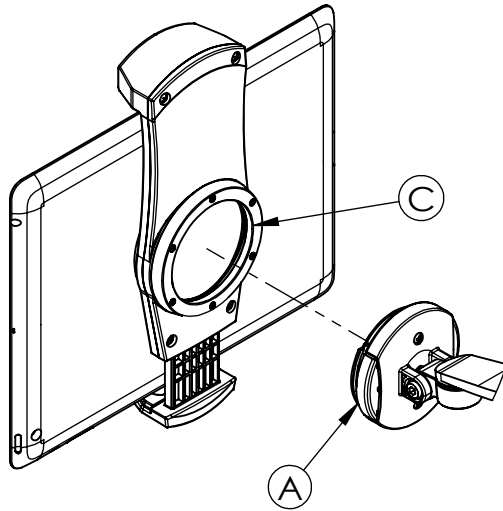


Attachment Description 1 : Press (D) and stretch (F) till larger than the length of tablet.
Then release (D) .

Attachment Description 2 : Put tablet onto (E) and press (D) . Push (F) back to fasten tablet.

Attachment Description 3 : After tablet is fastened, release (D) .

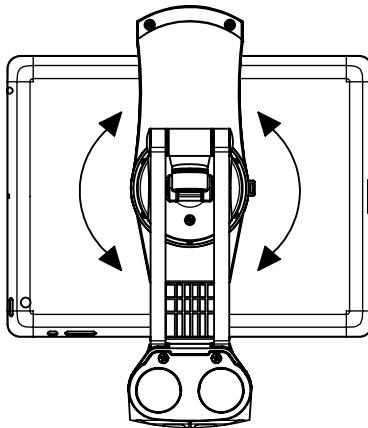
* Note : After attaching, please check if these two items are fastened well for preventing tablet sliding and damaged.



Attachment Description 4 : Press (A) to take off or attach (C) .

* Note : After attaching, please check if these two items are fastened well for preventing tablet sliding and damaged.

Attachment Finished



Attachment Description 5 : After attaching, turn tablet clockwise or anti-clockwise to get the best view.