

# ZING<sup>®</sup>

## Bagged Canister Vacuum

---

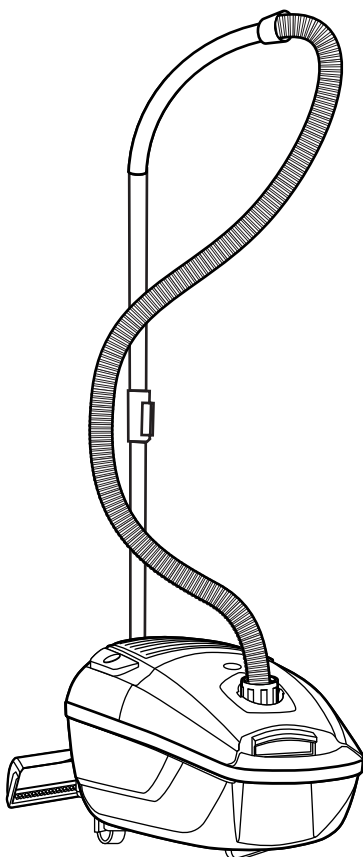
USER GUIDE  
1668 SERIES

For How-To  
videos, go to

**[www.BISSELL.com](http://www.BISSELL.com)**



Sections marked  
with this video  
icon have more  
information online.



# IMPORTANT SAFETY INSTRUCTIONS

## READ ALL INSTRUCTIONS BEFORE USING YOUR CANISTER VACUUM.

Always connect to a polarized outlet (one slot is wider than the other). Unplug from outlet when not in use and before conducting maintenance. When using an electrical appliance, basic precautions should be observed, including the following:

### **WARNING**

#### **TO REDUCE THE RISK OF FIRE, ELECTRIC SHOCK, OR INJURY:**

- » Always connect to a polarized outlet (one slot is wider than the other). Do not modify the polarized plug to fit a non-polarized outlet or extension cord.
- » Do not use vacuum cleaner when it is plugged in. Unplug from outlet when not in use and before servicing.
- » Do not use outdoors or on wet surfaces.
- » Do not allow to be used as a toy. Close attention is necessary when used by or near children.
- » Do not use for any purpose other than described in this User's Guide. Use only manufacturer's recommended attachments.
- » Do not use with damaged cord or plug. If appliance is not working as it should, has been dropped, damaged, left outdoors, or dropped into water, have it repaired at an authorized service center.
- » Do not pull or carry by cord, use cord as a handle, close a door on cord, or pull cord around sharp edges or corners. Do not run appliance over cord. Keep cord away from heated surfaces.
- » Do not unplug by pulling on cord. To unplug, grasp the plug, not the cord.
- » Do not handle plug or vacuum cleaner with wet hands.
- » Do not put any object into openings. Do not use with any opening blocked; keep openings free of dust, lint, hair, and anything that may reduce air flow.
- » Keep hair, loose clothing, fingers, and all parts of body away from openings and moving parts.
- » Turn off all controls before plugging or unplugging vacuum cleaner.
- » Use extra care when cleaning on stairs.
- » Do not use to pick up flammable or combustible materials (lighter fluid, gasoline, kerosene, etc.) or use in areas where they may be present.
- » Do not use vacuum cleaner in an enclosed space filled with vapors given off by oil base paint, paint thinner, some moth proofing substances, flammable dust, or other explosive or toxic vapors.
- » Do not use to pick up toxic material (chlorine bleach, ammonia, drain cleaner, etc.).
- » Do not pick up anything that is burning or smoking, such as cigarettes, matches, or hot ashes.
- » Do not use without filters in place.
- » Do not pick up hard or sharp objects such as glass, nails, screws, coins, etc.
- » Use only on dry, indoor surfaces.
- » Keep appliance on a level surface.
- » Do not carry the vacuum cleaner while it is running.
- » Hold plug when rewinding onto cord reel. Do not allow plug to whip when rewinding.

## SAVE THESE INSTRUCTIONS

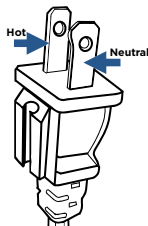
This model is for household use only.

### **WARNING**

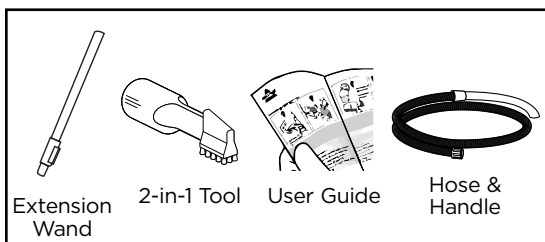
- » Plastic film can be dangerous. To avoid danger of suffocation, keep away from children.
- » Do not plug in your vacuum cleaner UNTIL you are familiar with all instructions and operating procedures.
- » To reduce the risk of electrical shock, turn power switch off and disconnect polarized plug from electrical outlet BEFORE performing maintenance or troubleshooting checks.

## THIS APPLIANCE HAS A POLARIZED PLUG

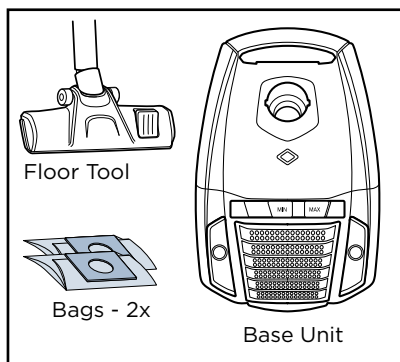
To reduce the risk of electric shock, this appliance has a polarized plug (one blade is wider than the other). This plug will fit in a polarized outlet only one way. If the plug does not fit fully in the outlet, reverse the plug. If it still does not fit, contact a qualified electrician to install a proper outlet. Do not change the plug in any way.



# Package Contents



**NOTE:** Standard accessories may vary by model. Additional tools may vary – check carton for contents.



## Thanks for buying a BISSELL vacuum

We're glad you purchased a BISSELL vacuum. Everything we know about floor care went into the design and construction of this complete, high-tech home cleaning system.

Your BISSELL vacuum is well made, and we back it with a limited one-year warranty. We also stand behind it with a knowledgeable, dedicated Consumer Care department, so, should you ever have a problem, you'll receive fast, considerate assistance.

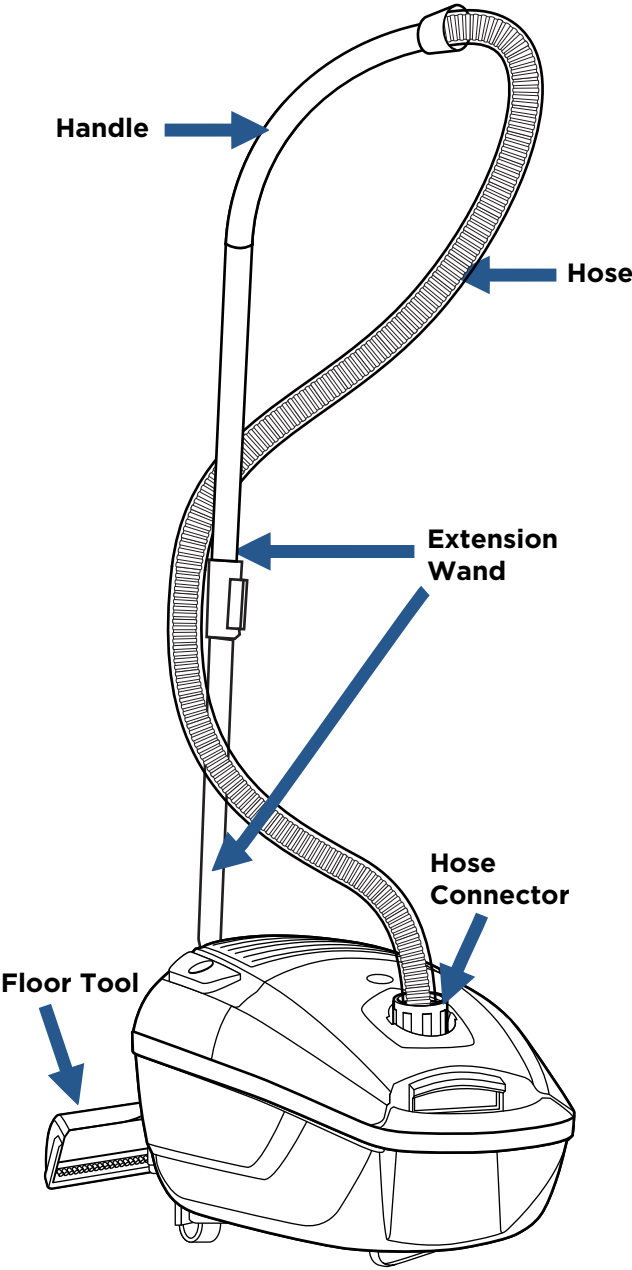
My great-grandfather invented the floor sweeper in 1876. Today, BISSELL is a global leader in the design, manufacture, and service of high quality homecare products like your BISSELL vacuum.

Thanks again, from all of us at BISSELL.

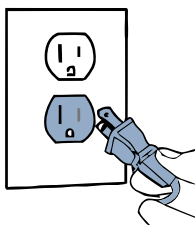
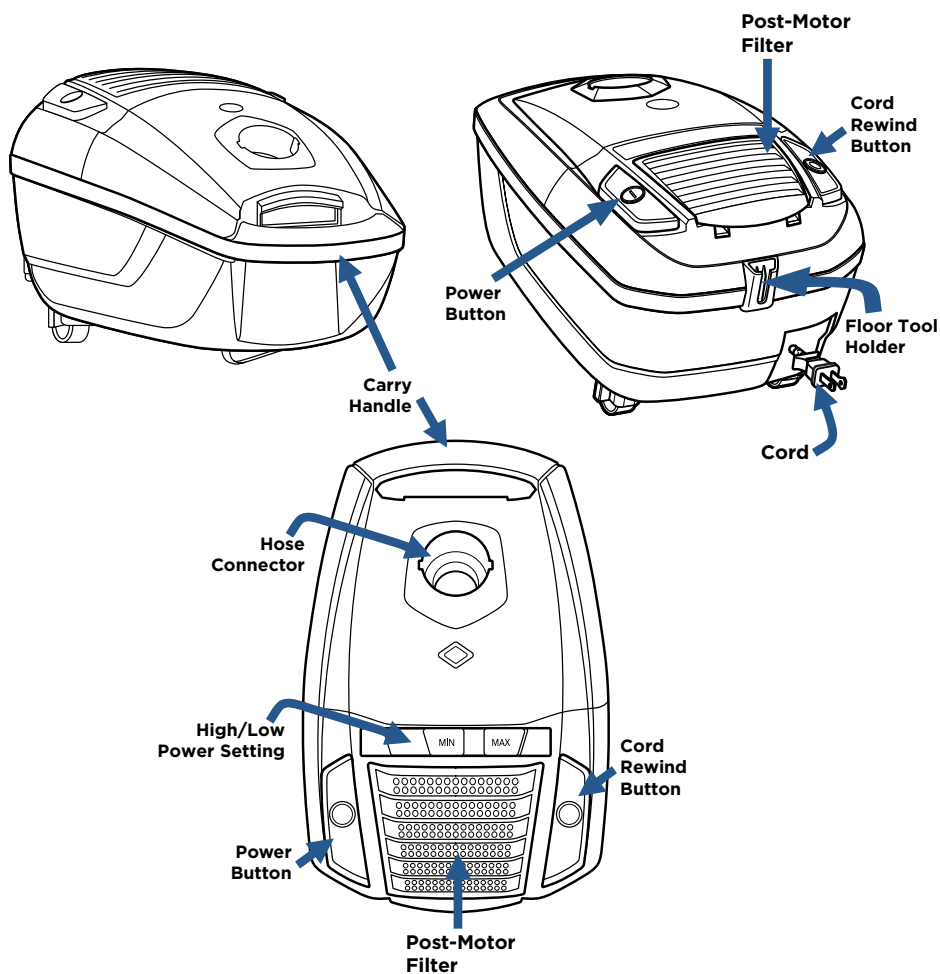
Mark J. Bissell  
Chairman & CEO

Safety Instructions.....	2
Product View.....	4-5
Assembly .....	6
Maintenance & Care .....	7-9
Troubleshooting .....	10
Warranty.....	11
Service.....	11
Contact Information .....	11
Product Registration.....	12
Parts & Supplies .....	12

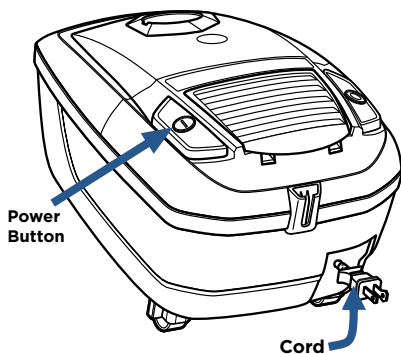
# Product View



# Product View



Plug into a polarized outlet  
Remove floor tool with hose from  
holder and press Power Button.

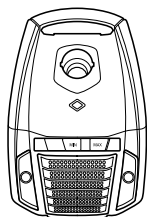


# Assembly

## **WARNING**

Do not plug in your vacuum until you are familiar with all instructions and operating procedures.

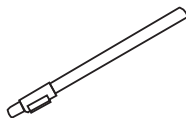
You will need the following to assemble:



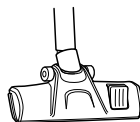
Body



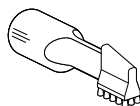
Handle & Hose



Extension Wand

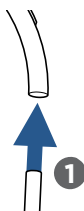


Floor Tool



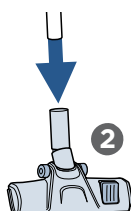
2-in-1 Tool

**1**



1 - Connect extension wand to the handle.

**2**



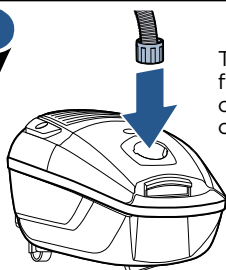
2 - Connect the bottom of extension wand to floor tool.

**3**



3 - To use 2-in-1 tool, attach to end of wand or handle when needed.

**2**



To connect hose, find the hose connector location on top of unit.

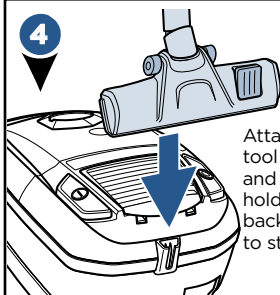
**3**



**“Click”**

Twist right until you hear a click to secure.

**4**

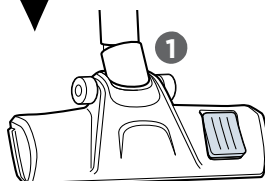


Attach floor tool to hose and slide in holder on back of unit to store.

**5**

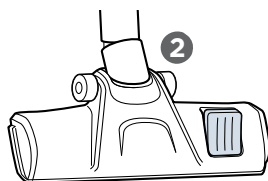
**Floor Tool Cleaning Modes:**

**1**



1 - Hard Floor Cleaning Mode

**2**



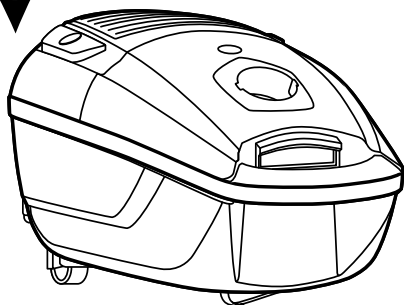
2 - Carpet Cleaning Mode

# Maintenance: Changing Bag

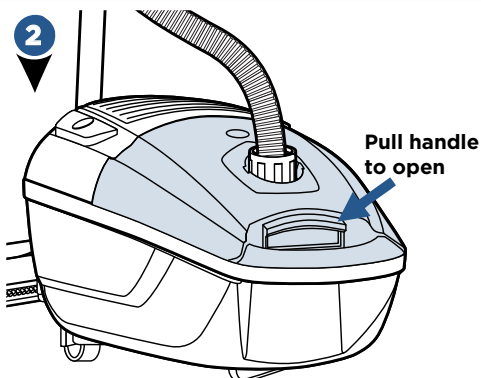
## **WARNING**

To reduce the risk of electrical shock, turn power switch off and disconnect polarized plug from electrical outlet before performing maintenance or troubleshooting checks.

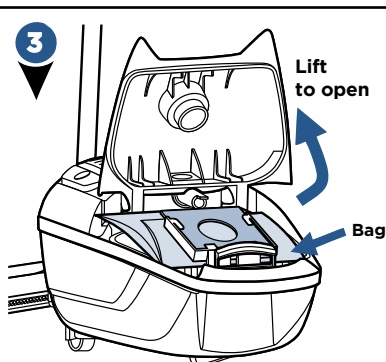
1



2

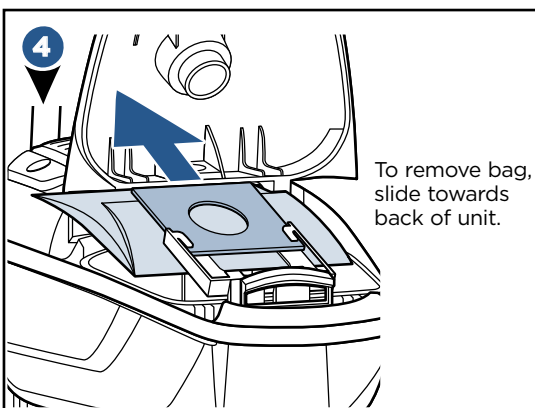


3

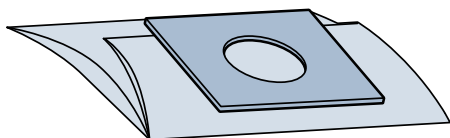


Lift canister door to access the bag.

4



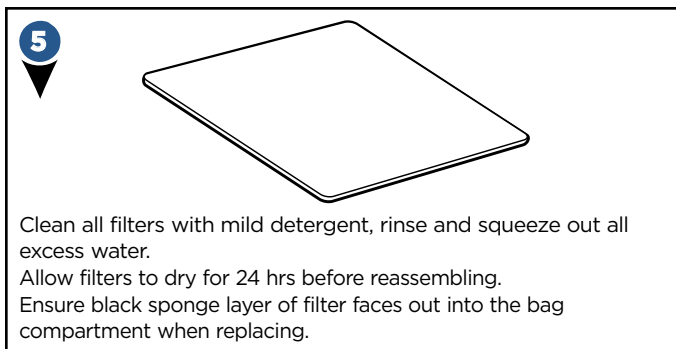
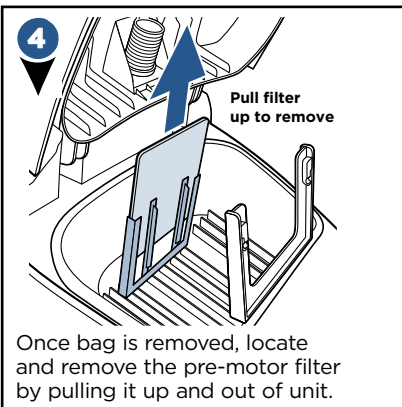
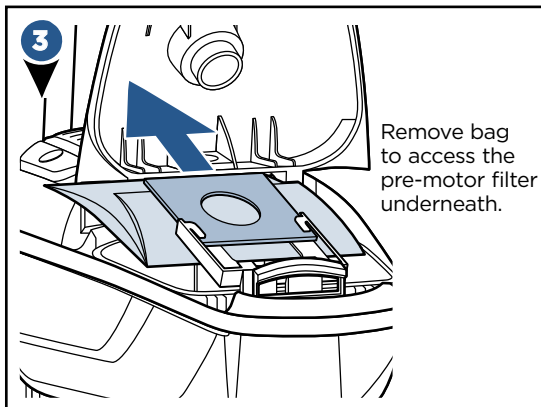
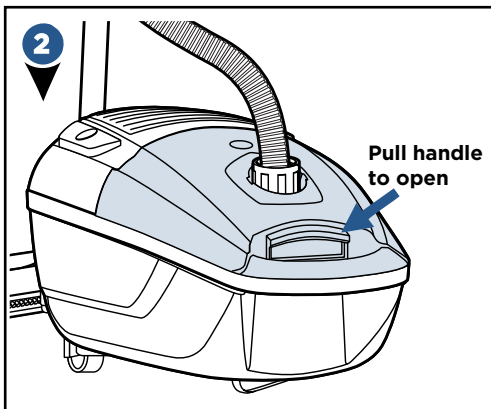
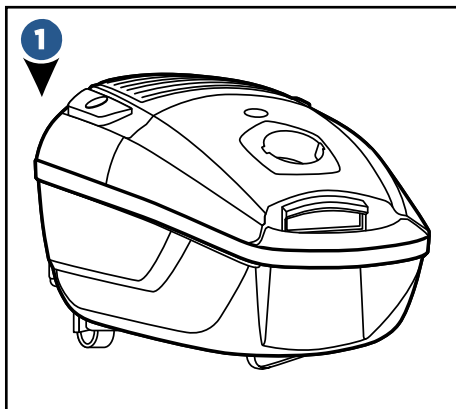
5



Replace bag in unit by sliding back in place and closing lid.

# Maintenance: Cleaning Filters

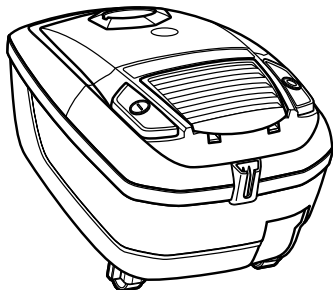
## Pre-Motor Filter Cleaning Instructions



# Maintenance: Cleaning Filters

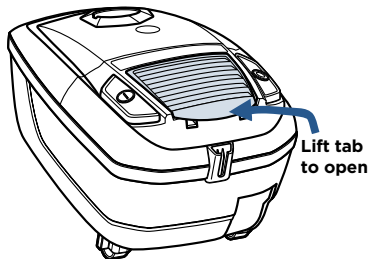
## Post-Motor Filter Cleaning Instructions

1



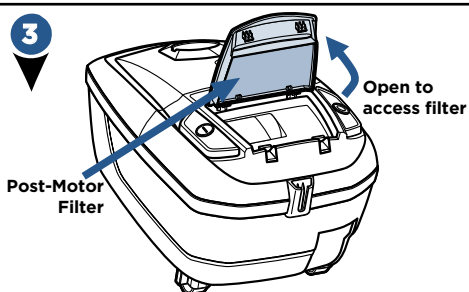
Turn unit to find the back.

2



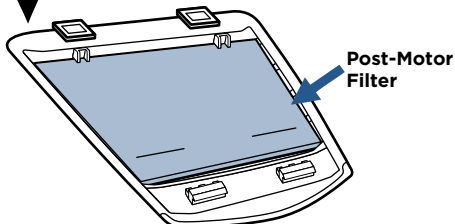
Locate post-motor filter cover on back of unit by cord rewind.

3



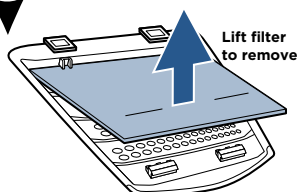
Lift post-motor filter cover up on back of unit to access filter.

4



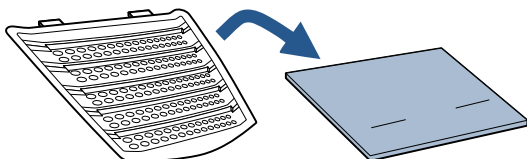
Locate post-motor filter on back cover.

5



Remove post-motor filter from back cover

6



Clean all filters with mild detergent, rinse and squeeze out all excess water.

Allow all filters to dry for 24 hrs before reassembling.

Place the filter over the 2 tabs in the back cover to align correctly when replacing.

# Troubleshooting

## **WARNING**

To reduce the risk of electric shock, turn power switch off and disconnect plug from electrical outlet before performing maintenance or troubleshooting checks.

Problem	Possible causes	Remedies
<b>Vacuum won't pick up dirt</b>	Filters are dirty	Remove and rinse pre-motor and post-motor filters. Allow enough time for them to dry properly before reinserting
	The Main Hose is not connected	Locate the Main Hose and reconnect by pushing the hose connection to secure the latch
	There is a crack or hole in the Main Hose	If there is a crack or hole, order a new Main Hose from the BISSELL website
	There is a clog in the vacuum	Remove debris and any other entanglements that may be restricting suction. If there is a clog in the wand or the hose, run a broomstick handle through to clear the clog.
	The Dust Bag is not seated correctly	Open Dust Bag chamber reseal bag correctly
<b>Dirt is escaping from the vacuum</b>	The Dust Bag is full	Replace with new Dust Bag
	Filters are missing	Check to see if all of the Pre-Motor and Post-Motor filters are in place
	The Dust Bag is not seated properly	Open Dust Bag chamber reseal bag correctly

## **Please do not return this product to the store.**

Other maintenance or service not included in the manual should be performed by an authorized service representative.

For any questions or concerns, BISSELL is happy to be of service. Contact us directly at 1-800-237-7691.

# Warranty

This warranty gives you specific legal rights, and you may also have other rights which may vary from state to state. If you need additional instruction regarding this warranty or have questions regarding what it may cover, please contact BISSELL Consumer Care by E-mail or telephone as described below.

## Limited One-Year Warranty

Subject to the \*EXCEPTIONS AND EXCLUSIONS identified below, upon receipt of the product BISSELL will repair or replace (with new or remanufactured components or products), at BISSELL's option, free of charge from the date of purchase by the original purchaser, for one year any defective or malfunctioning part.

See information below on "If your BISSELL product should require service".

This warranty applies to product used for personal, and not commercial or rental service. This warranty does not apply to fans or routine maintenance components such as filters, belts, or brushes. Damage or malfunction caused by negligence, abuse, neglect, unauthorized repair, or any other use not in accordance with the User's Guide is not covered.

BISSELL IS NOT LIABLE FOR INCIDENTAL OR CONSEQUENTIAL DAMAGES OF ANY NATURE ASSOCIATED WITH THE USE OF THIS PRODUCT. BISSELL'S LIABILITY WILL NOT EXCEED THE PURCHASE PRICE OF THE PRODUCT.

**Some states do not allow the exclusion or limitation of incidental or consequential damages, so the above limitation or exclusion may not apply to you.**

## \*EXCEPTIONS AND EXCLUSIONS FROM THE TERMS OF THE LIMITED WARRANTY

THIS WARRANTY IS EXCLUSIVE AND IN LIEU OF ANY OTHER WARRANTIES EITHER ORAL OR WRITTEN. ANY IMPLIED WARRANTIES WHICH MAY ARISE BY OPERATION OF LAW, INCLUDING THE IMPLIED WARRANTIES OF MERCHANTABILITY AND FITNESS FOR A PARTICULAR PURPOSE, ARE LIMITED TO THE ONE YEAR DURATION FROM THE DATE OF PURCHASE AS DESCRIBED ABOVE.

Some states do not allow limitations on how long an implied warranty last so the above limitation may not apply to you.

**NOTE:** Please keep your original sales receipt. It provides proof of date of purchase in the event of a warranty claim.

# Service

## If your BISSELL product should require service:

Contact BISSELL Consumer Care to locate a BISSELL Authorized Service Center in your area.

If you need information about repairs or replacement parts, or if you have questions about your warranty, contact BISSELL Consumer Care.

### Website:

[www.BISSELL.com](http://www.BISSELL.com)  
[Canada.BISSELL.com](http://Canada.BISSELL.com)

### E-mail:

[www.BISSELL.com/email-us](mailto:www.BISSELL.com/email-us)  
[Canada.BISSELL.com/support/contact-us](mailto:Canada.BISSELL.com/support/contact-us)

### Call:

**BISSELL USA Consumer Care**  
1-800-237-7691

**BISSELL Canada Consumer Care**  
1-800-263-2535

Monday- Friday 8am -10pm ET  
Saturday 9am - 8pm ET  
Sunday 10am - 7pm ET

# Register your product today!

Registering is quick, easy and offers you benefits over the lifetime of your product.

## You'll receive:

### **BISSELL Rewards Points**

Automatically earn points for discounts and free shipping on future purchases.

### **Faster Service**

Supplying your information now saves you time should you need to contact us with questions regarding your product.

### **Product Support Reminders and Alerts**

We'll contact you with any important product maintenance reminders and alerts.

### **Special Promotions**

Optional: Register your email to receive notice of offers, contests, cleaning tips and more!

**Visit [www.BISSELL.com/registration](http://www.BISSELL.com/registration) now!**

## **Visit the BISSELL website: [www.BISSELL.com](http://www.BISSELL.com)**

When contacting BISSELL, have model number of cleaner available.

Please record your Model Number: \_\_\_\_\_

Please record your Purchase Date: \_\_\_\_\_

**NOTE: Please keep your original sales receipt. It provides proof of purchase date in the event of a warranty claim. See Warranty on page 11 for details.**

## **Parts & Supplies**

**For Parts and Supplies, go to [www.BISSELL.com](http://www.BISSELL.com) and enter your model number in the search field.**

*We can't wait to hear from you!*

Rate this product and let us (and millions of your closest friends) know what you think!

**[www.BISSELL.com](http://www.BISSELL.com)**



©2015 BISSELL Homecare, Inc.  
Grand Rapids, Michigan  
All rights reserved. Printed in China  
Part Number 160-8317 Rev 11/15  
Visit our website at: [www.BISSELL.com](http://www.BISSELL.com)