



Cisco Aironet Series 1700/2700/3700 Access Point Deployment Guide

Last Updated: October, 2014

Cisco Aironet Series 3700 Access Point

Abstract

This section covers the Cisco 3700 Series Access Points theory of operation and installation as part of a Cisco wireless LAN (WLAN) solution. Subjects related include:

- Choosing the right Access Point (AP).
- Differences between AP 3700 and AP 3600.
- Feature module and ClientLink support.
- Physical/Hardware details, mounting options, bracket choices, and installation considerations.
- Antenna options, radiation patterns, and external antenna deployments.
- Understanding spatial streams, MCS rates and beam-forming (802.11n Primer).
- Review of 802.11ac and Wave-1 module for AP 3600.
- Understanding 802.11ac and Wave-1 for the AP 3700.
- Best Practices–Understanding Channel usage, 80 MHz, and available 11ac clients.
- 802.11ac performance considerations.

This document is intended for trained and experienced technical personnel familiar with the existing Cisco Wireless Networking Group (WNG) product line and features.



Choosing the Right Access Point

Models

The Cisco 3700 Series Access Point (AP 3700) targets customers requiring support for mission-critical applications. The AP 3700 embodies ClientLink 3.0, an innovative antenna technology comprising four transmit radios and four receive radios called 4X4 in a Multiple Input Multiple Output (MIMO) configuration supporting 3 spatial streams (3SS) together referenced as 4x4:3. Using this type of antenna system along with additional Modulation Coding Schemes (MCS rates supporting up to 256 QAM) and 80 MHz channel bonding, rates of up to 1.3 Gbps can be supported.

ClientLink 3.0—using these features along with an additional antenna (N+1)—allows for beam-forming for all 802.11a/g/n clients (like ClientLink 2.0) and now beamforms to 11ac 3 spatial streams clients.



Figure 1 Access Point Portfolio Placement



Access Points are available in three models:



- Internal antennas version labeled “i” have captured antennas (part of the housing and not removable). The “i” series is designed for indoor Enterprise installations, where office aesthetics are a primary concern.
- External antennas version labeled “e” are more rugged and designed for industrial use in locations, such as hospitals, factories, warehouses, and anywhere a need exists for external antennas and/or extended operating temperatures. The “e” version also supports mounting inside NEMA enclosures for use in the most demanding environments.
- Access Points for Professional Installations are labeled “p” series and may be used in outdoor applications.

Figure 2 AP 3700 Models and Eco-Packs

Aironet 3700i Access Point For highly visible indoor installations and office environments		Aironet 3700e Access Point For factories, warehouses and other industrial environments	
			
Attractive, high-quality design Internal dual-band integrated antennas		Rugged metal enclosure External dual-band antennas - Sold separately Extended operating temperature	
AIR-CAP3702i-X-K9	Dual-Band 802.11a/g/n/ac Controller Based Access Point	AIR-CAP3702e-X-K9	Dual-Band 802.11a/g/n/ac Controller Based Access Point
AIR-CAP3702i-XK910	(10 Pack SKU)	AIR-CAP3702e-XK910	(10 Pack SKU)

352174

Figure 3 AP 3600 Models and Eco-Packs

Aironet 3600i Access Point For highly visible indoor installations and office environments		Aironet 3600e Access Point For factories, warehouses and other industrial environments	
			
Attractive, high-quality design Internal dual-band integrated antennas		Rugged metal enclosure External dual-band antennas - Sold separately Extended operating temperature	
AIR-CAP3602i-X-K9	Dual-Band 802.11a/g/n/ac Controller Based Access Point	AIR-CAP3602E-X-K9	Dual-Band 802.11a/g/n/ac Controller Based Access Point
AIR-CAP3602i-XK910	10 Pack 802.11a/g/n/ac Controller Based Access Point	AIR-CAP3602E-XK910	10 Pack 802.11a/g/n/ac Controller Based Access Point

352175

Differences between the AP 3700 and AP 3600

The mechanical front of the AP 3700 and AP 3600 are similar in physical appearance with the exception of the “industrial cuts” along the edges of the 3700 (left) and the deeper recess around the logo area. This allows for easy visual identification of the different AP device types.

Figure 4 AP 3700 vs. AP 3600 (External Antenna Models)

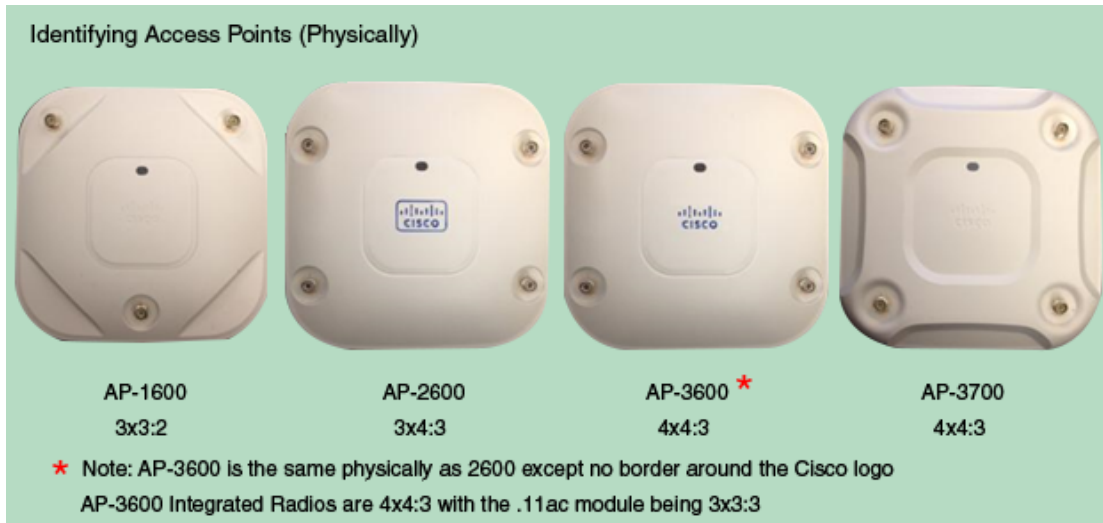


Figure 5 AP 3700 and AP 3600 (Backside Identical)



The AP 3700e supports 802.11ac (Wave-1) native. This frees the feature module slot for additional functionality while also permitting external antenna connections for 802.11ac data rates (w/AP 3700e).

Figure 6 Identifying APs Physically



Feature Module Support

AP 3700 and AP 3600 have integrated support for option modules. The goal in supporting a modular design is to offer a product that can provide longevity and true flexibility as technology changes. This provides a real value protection for customers. It also provides Cisco with an opportunity to introduce new features and functionality into a current stable platform.

The Wireless Security and Spread Spectrum Intelligence (WSSI) module adds new functionality to the AP to future-proof customers' investment. This module provides a dedicated monitor radio to scan the full spectrum (not just the channel on which the AP is operating). It will offload complete monitoring and security services to the monitor module including CleanAir, WIDS/WIPS, Context-aware Location, Rogue Detection, and Radio Resource Management (RRM). This module allows for full spectrum analysis on all channels on both the 2.4 and 5 GHz bands.

Having a WSSI module avoids having the need to deploy a separate, dedicated overlay network for full spectrum monitoring and eliminates the need for an extra cable pull and additional infrastructure costs (Figure 7).

There is also an option module for the AP 3600 that provides 802.11ac (Wave-1) functionality. This option cannot be used on the AP 3700 because it already has 802.11ac (Wave-1) integrated. This option module for the AP 3600 will operate at 5GHz and allow the AP 3600 to fully support 802.11a/n along with 802.11ac clients. Wave-1 functionality supports a 1.3 Gbps PHY / ~1 Gbps MAC (throughput) using 3 spatial streams, 80 MHz, and 256 QAM. The option module does not support ClientLink 2.0 but rather supports the Explicit beamforming specification that is part of the 802.11ac standard..

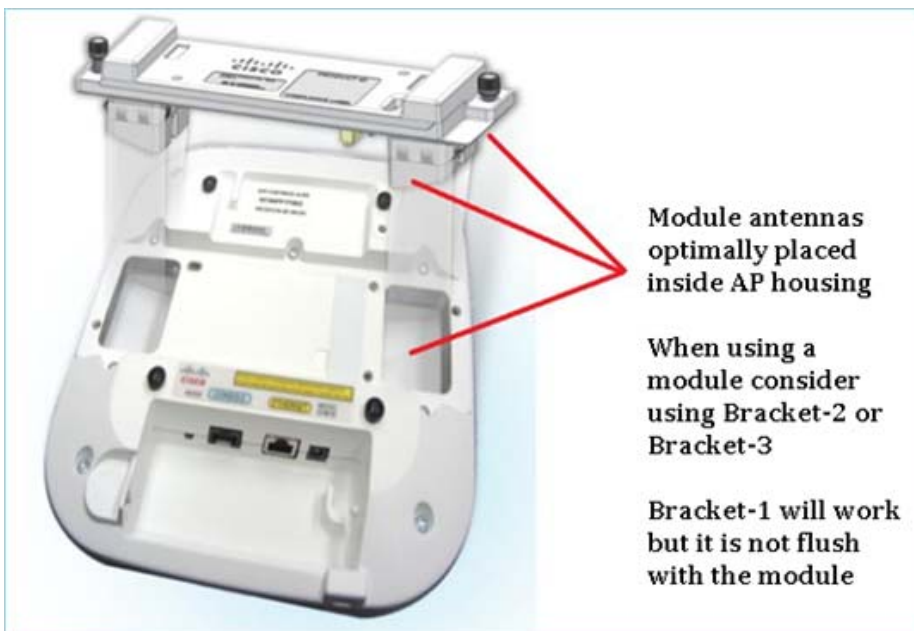
Use of option modules may require local power supply, Cisco power injector, .3at PoE+, or the use of Cisco Enhanced PoE, as the module typically increases the power draw to greater than 15.4 W (.3af).



Note

Cisco Enhanced PoE was created by Cisco and is the forerunner to 802.3at PoE+.

Figure 7 Feature Module of the Bottom of the AP 3700 and AP 3600



Beamforming – Understanding ClientLink





The AP 3700 supports the new “ClientLink 3.0” and is able to beamform to 802.11ac clients including 1, 2, and 3 spatial streams. It also supports all ClientLink 2.0 functionality with legacy 11a/g clients and 802.11n 1, 2, and 3 spatial stream clients.

The AP 3600 supports ClientLink 2.0 which beamforms to legacy 11a/g clients and 11n 1, 2, 3 spatial stream but does not support ClientLink 3.0 (Cisco beamforming method to 11ac clients).

Both the AP 3700 and AP 3600 with module supports the 802.11ac beamforming standard known as ECBF (Explicit Compressed Beam Forming)—a new IEEE method of beamforming that is emerging but not yet fully supported in 11ac clients. Cisco ClientLink is similar but can work with all clients today including 11a/g/n as well as 11ac clients. ClientLink also takes advantage of the extra transceiver in the AP, so it beamforms to clients with 3 spatial streams.

Figure 8 ClientLink Feature Comparison

Cisco ClientLink Comparison

	Competitors	ClientLink 1.0	ClientLink 2.0	ClientLink 3.0
Beamforming Type	Standards	Beyond Standards	Standards and Beyond Standards	Standards and Beyond Standards
Access Points Supported	Most 802.11n	1140, 1260, 3500	3600, 2600, 1600	3700
No. of Transmitters to Improve Reliability for Downlink Traffic	2-3	2	3-4	4
Clients Supported	802.11n	802.11a/g	802.11a/g/n	802.11 a/g/n/ac
No. of Clients Supported (per Radio)	-	15	128 (1600 = 32*)	128
Optimized for iPhone, iPads (1x1:1SS, 11n or 11ac)	No	No	Yes	Yes
Optimized for Newer Laptops from Apple, Dell, Lenovo, HP - (3x3:3SS, 11n) Upcoming 802.11ac 2x2 and 3x3 Notebooks	No	No	Yes (2600, 3600)	Yes
Ready for Mobile Devices Influx (BYOD)	No	No	Yes	Yes
Optimizes AP Resources for Higher Client Density Support	No	Yes (Limited)	Yes (2600, 3600)	Yes
Client Performance and Coverage Improvements				

Both AP 3700 and AP 3600 support a 4x4:3 architecture. However, AP 3600 only supports 11ac in a 3x3:3 mode and lacks the ability to beamform AC clients beyond 7 clients at a time. But, AP 3700 can beamform 128 clients per radio interface.

Table 1 Feature Comparison between AP 3600 and AP 3700

Feature Comparison	AP 3600	AP 3700
Max. Data Rate	450 Mbps 1.3 Gbps – 11ac Module	1.3 Gbps
Radio	Dual Radio, 2.4 and 5 GHz	Dual Radio, 2.4 and 5 GHz
RF Design (MIMO:SS)	4x4:3 – Integrated Radios 3x3:3 – 11ac Module	4x4:3
Power Draw	4x4:3 + 3x3:3 = 802.3at 5 GHz only = 802.3af	4x4:3 = 802.3at 3x3:3 = 802.3af
Client Count	200 – per integrated radio 50 – 11ac Module	200 – per integrated radio
Beamforming	ClientLink 2.0a/g/n – AP ECBF with 11ac Module	ClientLink 3.0a/g/n/ac and ECBF with 11ac
Beamforming Client Count	128 – per integrated radio 7 – 11ac Module\	128 – per integrated radio
Spectrum Intelligence	CleanAir	CleanAir

Table 1 Feature Comparison between AP 3600 and AP 3700 (continued)

Feature Comparison	AP 3600	AP 3700
RRM	Available	Available
Modules	WSSI 802.11ac Wave1 3G Small Cell 802.11ac Wave2	WSSI 3G Small Cell 802.11ac Wave2

APs Physical Hardware and Mounting Options

AP 1600, 2600, 3600, and 3700 have similar physical dimensions with a few differences in physical appearance, most of which are cosmetic changes to distinguish the different models. The mounting options and bracket configurations are identical and interchangeable.

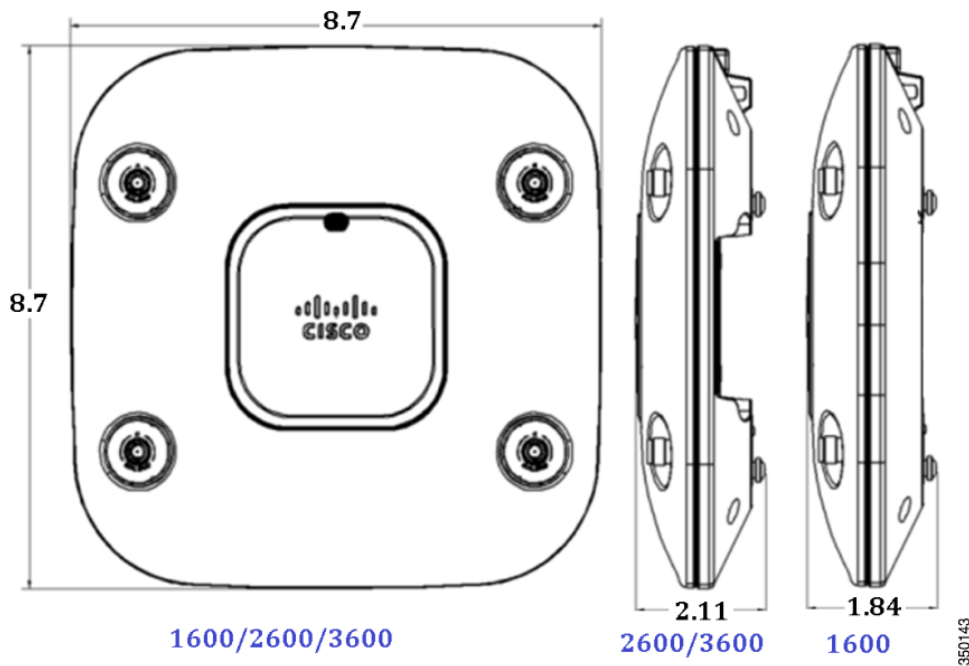
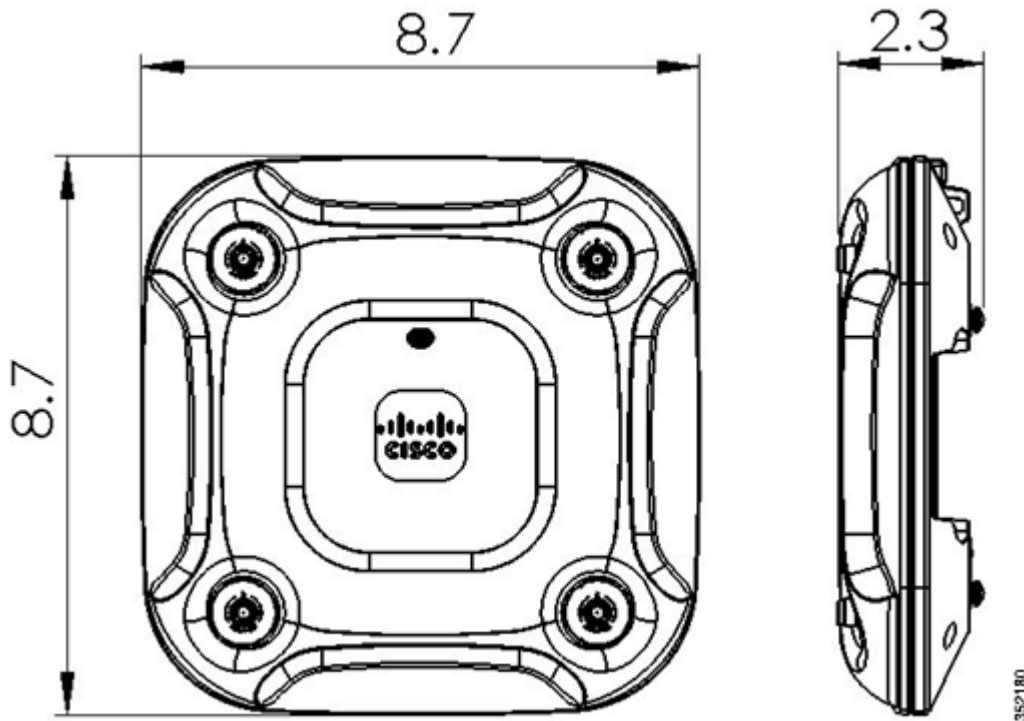
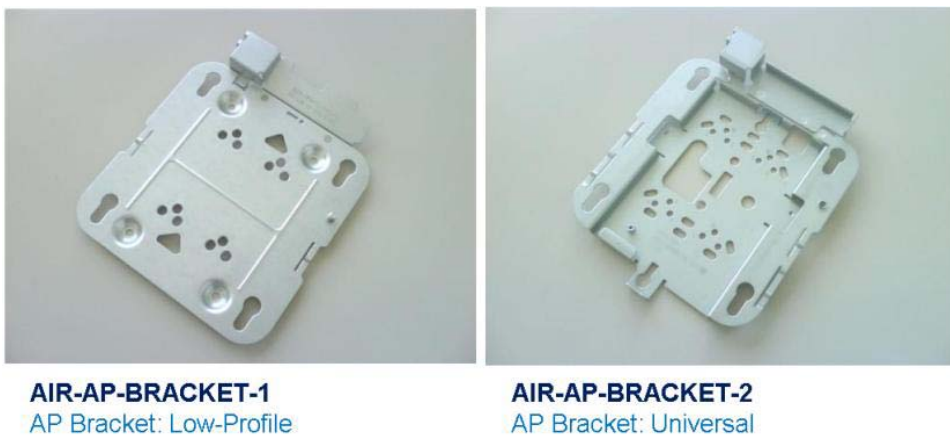
Figure 9 Mechanical Drawing of APs 1600, 2600, and 3600

Figure 10 3700 Mechanical Drawing



There are many different installation options available depending upon the requirements of the customer. Brackets are available from Cisco as well as third-party companies. During the ordering process, the customer may choose one of two brackets (but not both). Each bracket is a zero-dollar (\$0) option at the time of configuration. If the customer does not choose a bracket, the selection default is AIR-AP-BRACKET-1, which is the most popular for ceiling installations. The other choice is a universal bracket that carries part number AIR-AP-BRACKET-2 (Figure 11).

Figure 11 Access Point Bracket Choices - If You Are Using the AP 3600 Module, We Recommend AIR-AP-Bracket-2



AIR-AP-BRACKET-1
AP Bracket: Low-Profile

AIR-AP-BRACKET-2
AP Bracket: Universal

350144

If the AP needs to be mounted directly to a ceiling on the gridwork, then AIR-AP-BRACKET-1 is mounted flush and has the lowest profile. However, if the AP is mounted to an electrical box or other wiring fixture, or inside a NEMA enclosure or perhaps wall mounted, then AIR-AP-BRACKET-2 is a better choice. The extra space in the bracket allows for wiring, and the extra holes line up with many popular electrical boxes. When mounting the bracket to the ceiling gridwork, some ceiling tiles are recessed. For this reason, two different styles of ceiling clips, recessed and flush rails, are available (Figure 12).

Figure 12 *Different Clips are Available for Attaching to Ceiling Grid Work*



AIR-AP-T-RAIL-R
Ceiling Grid Clip (Recessed)



AIR-AP-T-RAIL-F
Ceiling Grid Clip (Flush)

350078

Channel Rail Adapters - Cisco Part Number AIR-CHNL-ADAPTER

When mounting APs to ceiling channel rails such as the ones shown in [Figure 13](#), an optional channel adapter is used, AIR-CHNL-ADAPTER. It comes in a two-pack and attaches to the ceiling grid clip shown above. Refer to [Figure 13](#) and [Figure 14](#).

Figure 13 *Example of Channel Rails*



350078

Figure 14 AIR-CHNL-ADAPTER (left) Slides Onto the Rails



Figure 15 AIR-CHNL-ADAPTER Mounted to Rail Clip (left) and Finished Installation (right)



Mounting an AP Directly Into the Tile Using Optional AIR-AP-BRACKET-3

Many hospitals and other carpeted enterprise environments prefer a more streamlined look and wish to install the AP directly into the tile. This can be done using the optional Cisco AIR-AP-BRACKET-3 (Figure 16).

When using this bracket, the “beauty ring” is used as the template to cut the tile, which can be cut using a carpet knife or an electric tool such as a rotary cutting tool, e.g., Dremel™ or Rotozip™. Cisco does not offer custom cut tiles because there are simply too many different styles and the tiles are easy to cut.

The AP is fully supported above the tile with a metal rail that extends the length of the tile. This supports the AP should the tile become wet or otherwise fail. A mechanical set screw pulls the AP tight to the ceiling and locks it into the bracket. Additionally, physical security of the AP can be maintained by the use of a Kensington style lock, but once installed it is difficult to remove the AP without removing the tile because the AP will not slide out from the front side of the tile.

Figure 16 Optional AIR-AP-BRACKET-3 Used to Install the AP Directly Into the Tile



Note This bracket will fit the 1040, 1140, 1260, 1600, 2600, 2700, 3500, 3600, and 3700 series APs.

Wall Mounting the AP

When wall mounting is desired, the installer should understand that walls can be a physical obstacle to the wireless signal; therefore, maintaining 360 degree coverage may be compromised by the wall. If the wall is an outside wall and/or the goal is to send the signal in a 180-degree pattern instead, a directional antenna often referred to as a “patch” antenna may be a better choice assuming that the AP 3600e is used.

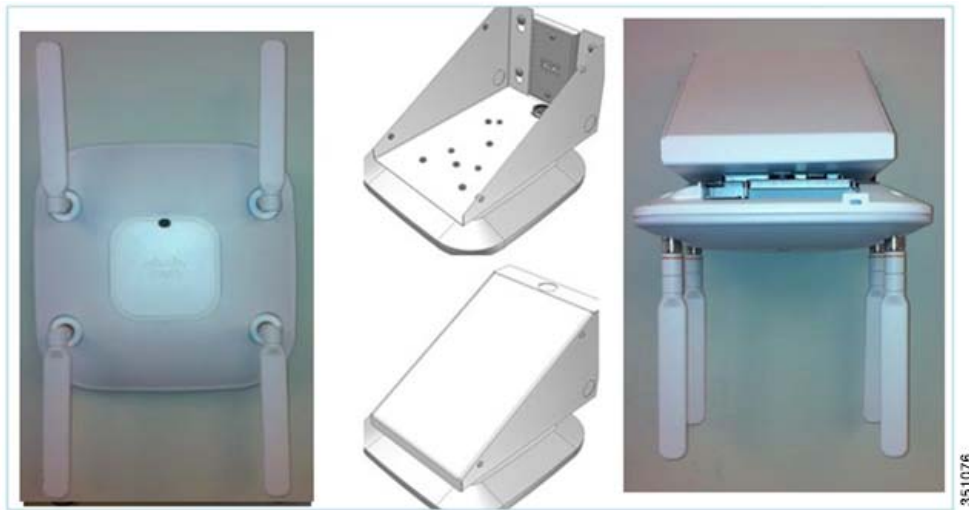
Avoid wall-mounting APs with internal antennas, such as the AP 3600i, unless you use the optional Oberon right-angle mount (Figure 17). The internal antenna model was designed to mount to a ceiling to provide 360-degree coverage. If wall-mounted in a non-ceiling orientation, the signal may penetrate the floor above and below causing unintended coverage that could result in additional and needless roaming access when a mobility client, e.g., a user with Wi-Fi phone, walks by on an adjacent floor.

Instead, use the AP 3600e (with dipoles or patch antennas) or use an optional wall mount that puts the AP 3600i or AP 3500e into a ceiling type orientation when mounted to a wall.



Note APs with internal antennas such as the AP 3600i and AP 3700i that are wall mounted should use the Oberon mounting bracket unless roaming is not an issue, for example, hotspot, kiosk, or small venue scenario.

Figure 17 Wall-Mounting APs Antennas Should be Vertical (Up/Down) or Use the Oberon Right-Angle Mounting Structure - Ideal for the "I" series such as 3600i and 3700i. Oberon P/N 1029-00)



Changing the Color of an AP

If there is a desire to change the color of an AP, rather than painting the AP which would void the warranty, consider using colored vinyl tape or a colored plastic cover from Oberon (Figure 18).

Figure 18 Third-Party Option for Changing AP Color, Adding Custom Logo, or Hiding the LED



If the environment requires an AP color change or you have a requirement to remove the Cisco logo or LED you have options

www.oberonwireless.com

Phone (814) 867-2312

PART NUMBERS:
 1140/3500i/3600i-SKIN
 3600e-SKIN
 1260/3500e-SKIN

Specifications:

- Fabricated from textured ABS plastic
- The skin is virtually transparent to access point radio frequency signals
- Attaches to access point with Velcro tabs (included)
- Standard color is black
- Skins are paintable
- Custom colors are available on request. Please contact your Oberon representative

350084

Unique Installations

Clean Rooms (Healthcare)

Many hospitals and factories have requirements to wipe down or gently spray the environment with a chemical (often diluted material that has cleaning / disinfectant properties). The Cisco AP 3600 is designed with a purpose built Wi-Fi chipset with enterprise and industrial class components (Figure 19). This enables the AP enclosure to have a Plenum rating and is vent-less, so the unit is ideal for these types of applications.

Figure 19 Inside the AP 3600 - Cover Removed (No Vents or Fans, Everything is Industrial Quality)



Note

AP 2600 and AP 3700 is also made of a similar construction and designed for clean room deployments.

If the clean room environment requires metal ceilings or areas where tile is not practical, a metal enclosure from Oberon can be used (Figure 20).

Figure 20 Oberon Metal Enclosure Protects and Secures the AP in Clean Room Areas



Above the Ceiling Tiles

The AP 3600 and 3700 are rated for installation in the Plenum area (UL-2043). Many customers prefer to locate the AP so that nothing can be visible on the ceiling. In some cases this is preferred for aesthetic reasons, so customers may install the AP above a drop ceiling. This also may be preferred in high theft areas such as classrooms or in areas where policy dictates that nothing can be visible on the ceiling.

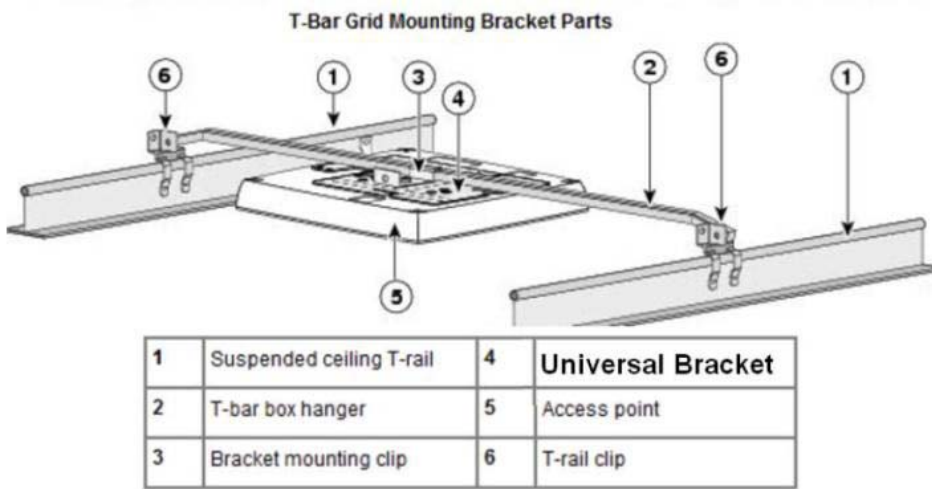
When this is a hard requirement, optional T-Bar hangar accessories from third-party companies, such as Erico and Cooper, can be used (Figure 21). The Erico Caddy 512a, the Cooper B-Line BA50a, or similar T-Bar Grid T-Bar hangars can be used.

For more information see:

www.erico.com

www.cooperindustries.com

Figure 21 Example of How to Hang an AP Above the Ceiling Tiles



Note

Installing APs above the ceiling tiles should only be done when mounting below the ceiling is not an option. The tiles must not be conductive; such installations can certainly degrade advanced RF features such as voice and location, so verify coverage and performance. Always try to mount the AP as close to the inside middle of the tile as possible, and avoid areas with obstructions ([Figure 22](#)).

Figure 22 Installing AP Above Ceiling Tiles: Pick An Area Clear of Obstructions and Avoid Ceiling Clutter



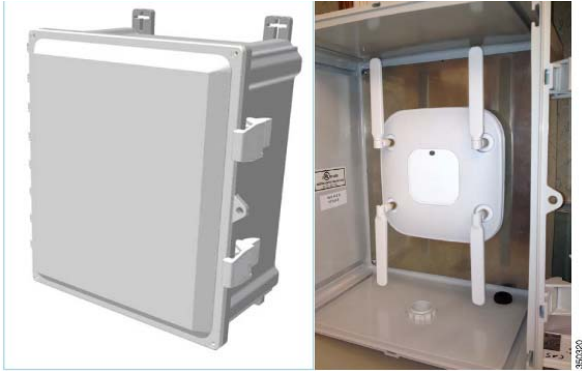
Stadium/Harsh Environments

Customers wishing to install the AP in harsh environments where it may be exposed to weather, such as sporting areas, stadiums, open garden areas, or warehouse freezers, may wish to use a NEMA type enclosure.

**Note**

Some APs may not be certified for outdoor deployments in a NEMA enclosure. This varies around the world, for example some regulatory agencies permit AP outdoor NEMA enclosures if the AP is indoors such as a freezer or garden area but may prohibit its usage outdoors. This seems to vary with regard to weather radar compliance and often UNII-1 compliance and so on. Check with your Cisco account team or the communications regulatory agency that has jurisdiction in your part of the world.

Figure 23 Example of NEMA 16x14x8 Enclosure With Pressure Vent on Bottom



Third-party sources for NEMA type enclosures include:

www.oberonwireless.com

www.sparcotech.com

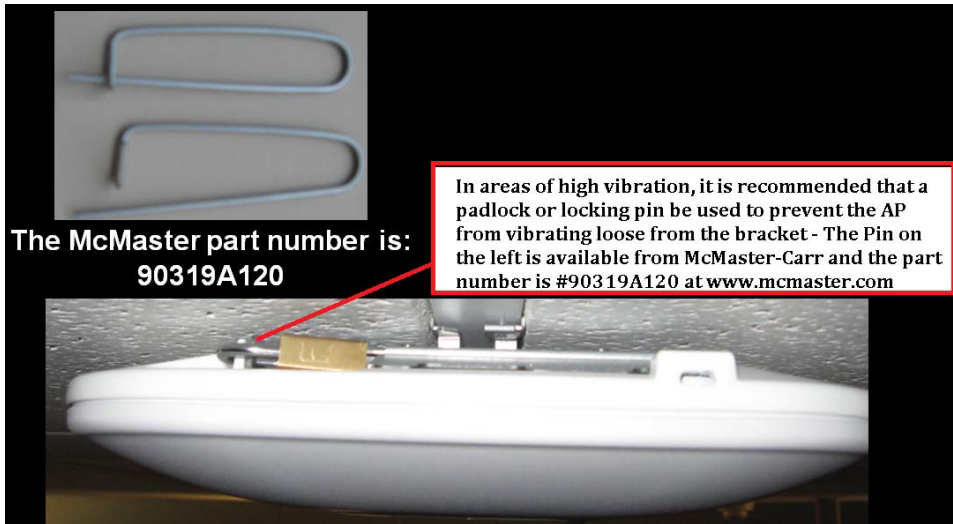
www.terra-wave.com

When using a NEMA type enclosure, try to have the cables exit out of the bottom of the enclosure so that rain and moisture do not run down the cable into the enclosure. Also, the color of the enclosure may affect the heat rating; for example, a black enclosure gets much hotter in the sun than a white one. You may also want to use a pressure vent to prevent moisture accumulation. See [Figure 23](#).

Areas With High Vibration

If the AP is installed using a “side arm” type mount or other mounting locations where there is a likelihood of high vibration, it is recommended that a padlock or metal pin be used to prevent the AP from vibrating loose from the bracket.

Figure 24 *A Metal Pin or Padlock Will Not Deteriorate Over Time So It is Better Than a Plastic Tie*



Warehouse and Factory

Warehouse installations are often difficult because of the very high ceilings and the clutter of the material being warehoused. When performing a coverage check (site survey) always check the coverage at “full stock” levels because the material being warehoused can change the RF coverage creating loss of uniform coverage. Also, try to position the APs as close to the users, perhaps lowering the antennas when possible or practical to do so. If the AP is 30 feet in the air, that is, the signal has to go 30 feet further, “best case”. When configuring coverage for aisles, try to use directional (Patch) antennas on the wall and shoot down the aisles; or use low-gain Omni-directional antennas on the ceiling (such as dipoles) or units with integrated antennas because high gain omni-directional antennas tend to have more nulls. See [Figure 25](#).

Another option is to mount the AP lower using pipe and electrical box mounting techniques.

Figure 25 AP Placement in a Warehouse Environment



Note

External dipole “e” series or internal antenna “I” series version could be used.

When mounting an AP at the end of a pipe or electrical conduit box, use the universal bracket Cisco AIR-AP-BRACKET-2 because it will fit to the holes of most electrical boxes ([Figure 26](#)). Conduit and adapters can be purchased in most electrical or home repair centers.

Figure 26 *Mounting an AP onto an Electrical Conduit Box (Ceiling T-Bar or Conduit)*



Ethernet Cable Recommendation

While the AP 1600, 2600, and 3600 will work fine with CAT-5e, for new cable installations, it is recommended that customers use CAT6a because this is the cabling required by the 10GE standard.

Antenna Cable Recommendation

Whenever practical/possible, please keep antenna cable runs as short as possible. Cisco offers low loss (LL) and ultra low loss (ULL) cables, which have the same characteristics as Times Microwave LMR-400 and LMR-600.

Cisco cables carry the part number AIR-CAB (Aironet Cable) and then a length. For example, a 20 Ft length of LL cable with RP-TNC connector is Cisco AIR-CAB-020LL-R. These heavy black cables are not Plenum rated and are primarily for outdoor use or manufacturing areas.

Figure 27 *When Drilling Holes for Cable, Allow for Size of Connector (Typically 5/8 Inch) Drill Bit*



Access Point Spacing Recommendations

If you have a Wi-Fi device such as an AP and you are going to use another AP in the vicinity on a different channel, it is recommended that you space each AP apart by approximately 6 Ft (2 meters). Avoid clustering the APs or the antennas from different APs together because this could cause degradation in performance. This recommended distance is based on the assumption that both devices operate in the unlicensed band and do not transmit RF energy more than 23 dB—that is, 200 mW. If higher power is used, space the APs farther apart.

Should you have other devices that transmit, especially if they operate in the same frequency ranges, for example, frequency hopping legacy APs or other devices that operate close in frequency to those of the AP (think below or above the 2.4 and 5 GHz band), you should consider moving or separating the devices as far apart as can reasonably be done. After you have done this, check for interference by testing both devices at the same time under heavy utilization (load) and then characterize each system independently to see how much, if any, degradation exists.



Warning

In order to comply with FCC, EU, and EFTA RF exposure limits, antennas should be located at a minimum of 7.9 inches (20 cm) or more from the body of all persons. See the installation guide under declaration of conformity for more on this.

Installations in IDF Closets (Telecommunications or Other Electrical Equipment)

When installing APs near other electrical or telecommunications equipment, keep all wiring and metal away from the antennas and avoid placing the antennas near electrical lines. Do not route wiring electrical or Ethernet in the near field (6-15 inches) from the antenna. Try to refrain from installing the AP in the electrical closet because the best place for the AP is as close to users as possible/practical. If you have remote antenna cables from such a closet, you may be required to use Plenum rated cable (see local fire/safety regulations for more on this).

Below are a few URLs for understanding interference:

http://www.cisco.com/en/US/prod/collateral/wireless/ps9391/ps9393/ps9394/prod_white_paper0900aecd807395a9_ns736_Networking_Solutions_White_Paper.html

http://www.cisco.com/en/US/prod/collateral/wireless/ps5678/ps10981/white_paper_c11-609300.html

Installations at Very High Altitudes

While not defined in the specification sheet for the AP 3600 and AP 3700, these APs passed functional checks after a Non-Operational altitude test of 25C @ 15,000 Ft was performed. Additionally, they fully passed a functional test during an operational altitude test of 40C @ 9,843 Ft.

All units in the test group were connected to at least one WLAN client and monitored for continual operation passing traffic, while performing constant ping testing throughout the operational altitude test.

Installations Using a Common or Distributed Antenna System (DAS)

Due to the dual-band nature of the antenna system on the AP 3700 and AP 3600, along with key features such as ClientLink beamforming, it is not recommended for deployments on DAS.

Customers wishing to integrate a Wi-Fi over DAS solution should understand that Cisco does not certify, endorse, or provide RF support for Wi-Fi deployments over any DAS.

The DAS vendor and/or systems integrator is solely responsible for the support of the DAS products. The DAS vendor and/or systems integrator also provides adequate RF coverage and supports any RF related issues. This support includes, but is not exclusive to location accuracy, RF coverage, roaming issues related to RF, multipath issues, and scalability.

Additionally, the DAS vendor and/or systems integrator is responsible for understanding that the deployed DAS system meets the requirements of all of the customer's Wi-Fi devices and applications over the DAS system; this statement includes, but is not exclusive to, all Voice over WLAN (VoWLAN) and medical devices.

While Cisco Technical Assistance Center (TAC) and Cisco field teams do not provide support for RF issues that arise in a Cisco WLAN used over a DAS, they provide support for non-RF related issues in Cisco products as per the customer's support agreement with Cisco Systems.

For more on this see the following URL:

http://www.cisco.com/en/US/prod/collateral/wireless/ps5678/ps6973/positioning_statement_c07-565470_ps10092_Products_Data_Sheet.html

Installations Inside and Around Elevators

Elevator coverage can sometimes be accomplished by placing APs in the near field of an elevator, typically on each floor near the elevator door. Because elevators often have metal doors and the shafts are often concrete or contain other materials that degrade Wi-Fi coverage, it is important to check the coverage inside the elevator. While such coverage can be challenging it is often do-able, especially if the elevator is only a few floors.

High rise elevators are more challenging because roaming issues are problematic; the client is cycling through a large number of APs rather quickly. Some companies that do in-elevator advertising put a patch antenna on the floor inside the shaft and a patch antenna on the bottom of the elevator car, while other companies use leaky coaxial cable running on the side of the shaft.

When installing any Wi-Fi equipment inside the elevator cars or shafts, local regulations need to be followed because many times such installations are prohibited either for safety reasons or because the building owner or local fire department may prohibit the same. Also, it is dangerous and only elevator repair persons or contractors who have experience with this kind of work should be in those areas.

External Antenna Options and Patterns

For Use with 1600/2600/3600 and 3700e APs

The following antennas are available for use with APs 1600e*/2600e and 3600e:

AIR-ANT2524DB-R – Dual-band (Black) dipole	(4 required) – 2/4 dBi Dipole
AIR-ANT2524DW-R – Dual-band (White) dipole	(4 required) – 2/4 dBi Dipole
AIR-ANT2524DG-R – Dual-band (Grey) dipole	(4 required) – 2/4 dBi Dipole
AIR-ANT2535SDW-R – Dual band (short) dipole	(4 required) – 3/5 dBi Dipole
AIR-ANT2524V4C-R – Dual-band Omni-directional	(1 required) – 2/4 dBi Ceiling mount Omni use
AIR-ANT2544V4M-R – Dual-band Omni-directional	(1 required) – 4/4 dBi Wall mount Omni use
AIR-ANT2566P4W-R – Dual band directional	(1 required) – 6 dBi Patch wall mount use



Note

These are all dual-band, dual-resonant antennas. Do not use single-band antennas on this product unless you choose to disable the other radio band within the AP. Also, in the case of the AP 1600 only three dipole antennas are required (not 4). If using the ceiling, wall, or patch mount, simply leave the 4th antenna lead unused.

Antennas for Outdoor Deployments

In the U.S., installers who wish to deploy APs outdoors are recommended to use the “P” series products. The following antennas may be used with the AP 3600p and AP 3700p series.

AIR-ANT2524V4C-R – Dual-band Omni-directional (1 required) – 2/4 dBi Ceiling mount Omni use

AIR-ANT2544V4M-R– Dual-band Omni-directional (1 required) – 4/4 dBi Wall mount Omni use

AIR-ANT2566P4W-R– Dual band directional (1 required) – 6 dBi Patch wall mount use

Additionally, the AP 3700p has FCC approval for outdoor use with a higher gain antenna used for Stadium applications. Cisco AIR-ANT2513P4M-N is a Dual-band 13 dBi Patch antenna with “N” style connectors.



Note Cable assembly: RP-TNC to N (AIR-CAB005LL-R-N) may be required depending on installation.

For additional information on Cisco antennas, refer [Cisco Aironet Antennas and Accessories Reference Guide](#).

The antenna reference guide will have details of all Cisco antennas; you can also find individual datasheets at this URL: <http://www.cisco.com/en/US/products/hw/wireless/ps469/index.html>.



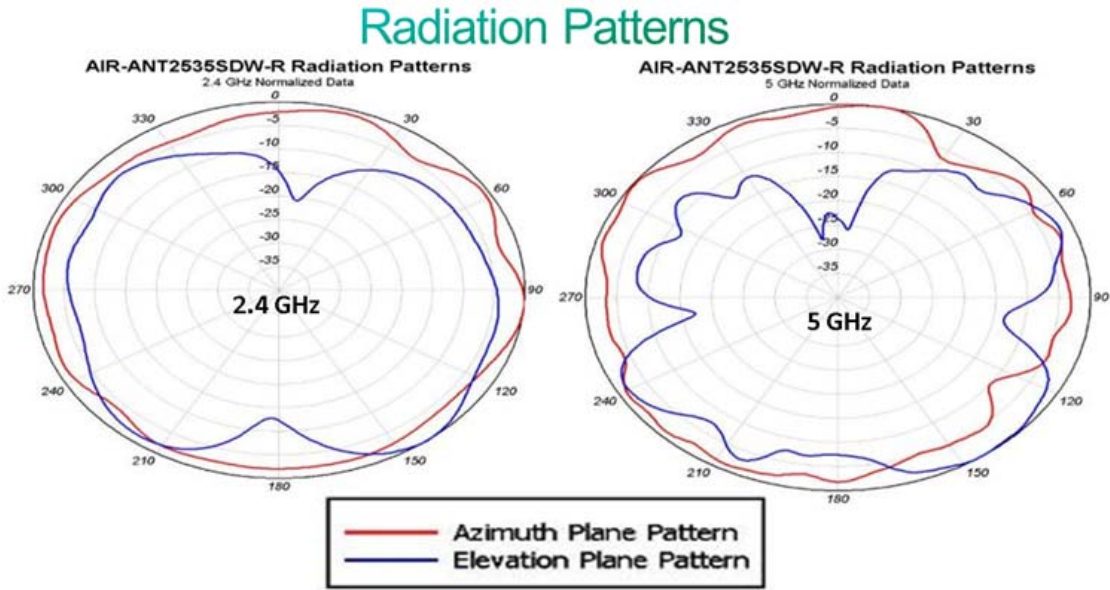
Note Always use Cisco antennas whenever possible – refer to the following URL: http://www.cisco.com/en/US/prod/collateral/wireless/ps5678/ps10981/white_paper_c11-671769.pdf

Cisco has also introduced a new smaller size dipole. While this antenna does not have an articulating knuckle, it is much smaller in size and is a good choice when aesthetics is a primary concern.

Figure 28 Standard Dipoles and Short Dipoles (On Right)



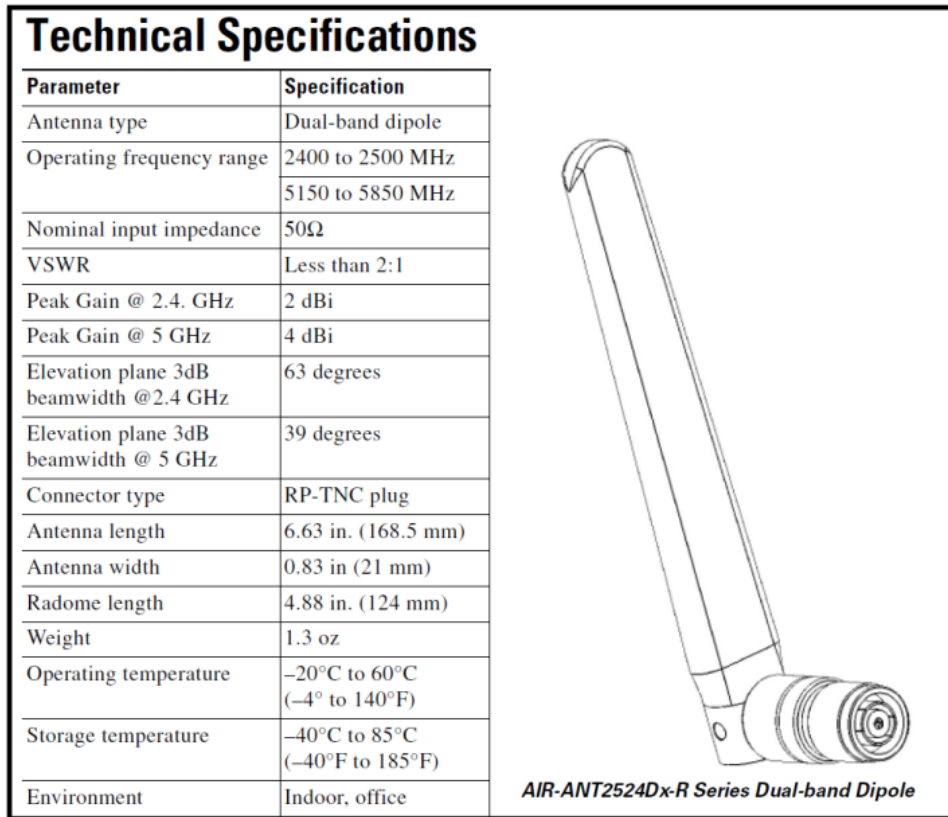
Figure 29 Radiation Pattern for the Short Dipole AIR-ANT2535SDW-R



352182

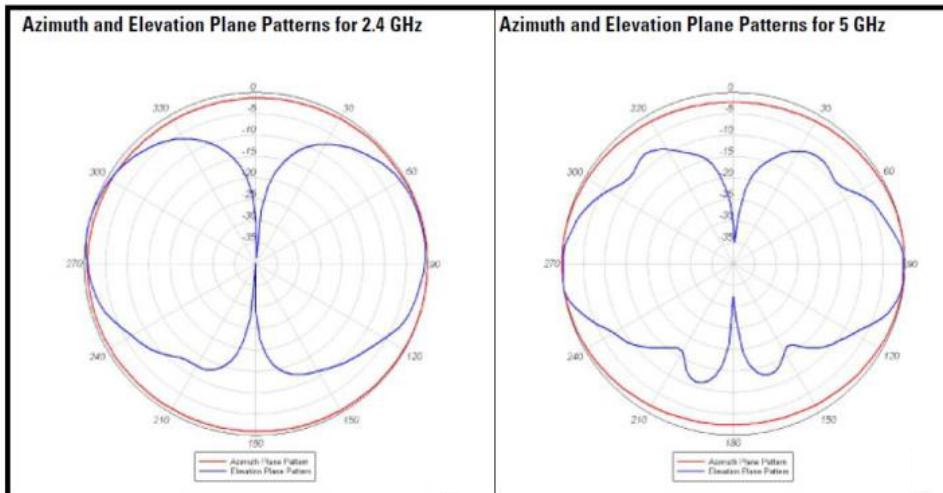
In addition, the antennas below may also be used with 1600, 2600, 3600 and 3700 “e” Series APs.

Figure 30 Specifications for the AIR-ANT2524Dx-R Dual-Band Dipole Antenna



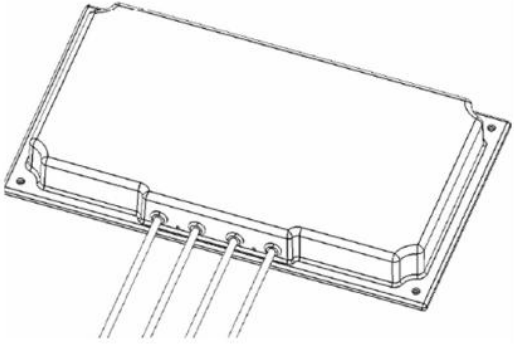
350095

Figure 31 Radiation Pattern for the AIR-ANT2524Dx-R Dual-Band Dipole Antenna

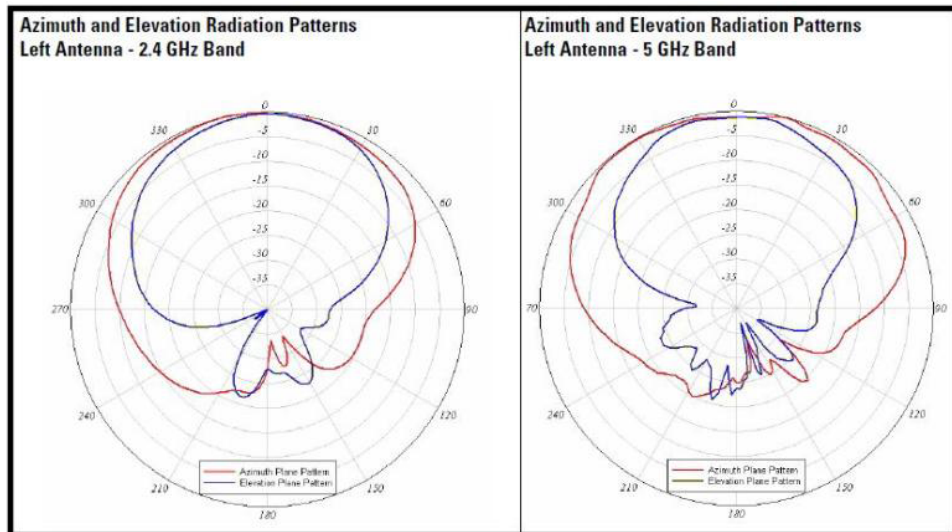


350096

Figure 32 Specifications for the AIR-ANT2566P4W-R Dual-Band Patch Antenna

Antenna type	4-element dual-band MIMO	 <p>AIR-ANT2566P4W-R 4 Element Dual-Band Patch (indoor / outdoor use)</p>
Operating frequency range	2400 to 2484 MHz 5150–5850 MHz	
VSWR	2:1 or less	
Gain	6 dBi in both bands	
Polarization	Linear, vertical	
Azimuth Plane 3-dB Beamwidth	2.4 GHz band: 105° 5 GHz band: 125°	
Elevation Plane 3-dB Beamwidth	2.4 GHz band: 70° 5 GHz band: 60°	
Length	6.3 in. (16 cm)	
Width	11 in. (27.9 cm)	
Depth	1.2 in. (3.05 cm)	
Weight	1.4 lbs	
Cable length and type	3 ft. (91.4 cm) plenum rated	
Connector	RP-TNC	
Environment	Indoor/outdoor	
Operating temperature range	-22° to 158° F -30° to 70° C	

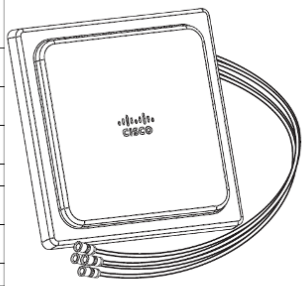
350097

Figure 33 Radiation Pattern for the AIR-ANT2566P4W-R Dual-Band Patch Antenna

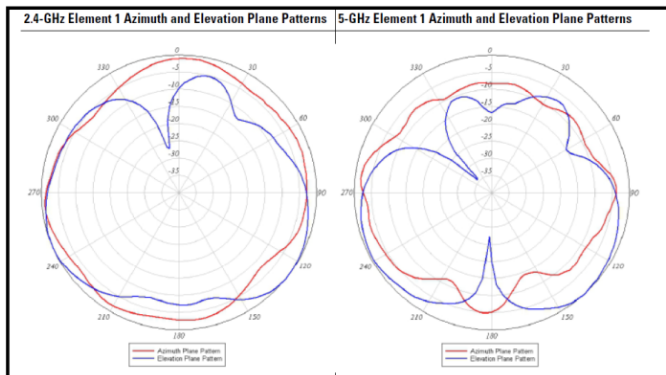
350098

Assuming that the antenna is mounted on a wall, the Azimuth (in Red) is the signal going forward from the antenna. The elevation, in Blue, is the “up/down” pattern.

Figure 34 Specifications for the AIR-ANT2524V4C-R Dual-Band Omni Antenna

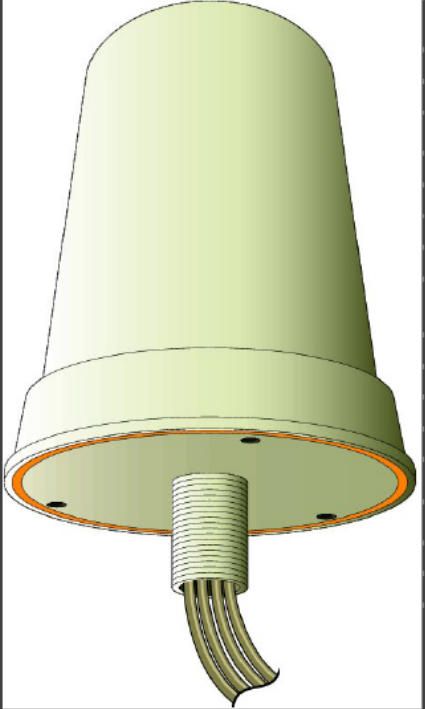
Antenna type	4-Element, Dual-band, Low Profile Omni	
Operating frequency ranges	2400–2484 MHz 5150–5850 MHz	
VSWR	2:1 or less in both bands	
Peak gain	2.4-GHz band: 2 dBi 5-GHz band: 4 dBi	
Polarization	Linear	
Azimuth plane 3 dB beamwidth	Omnidirectional	
Elevation plane 3 dB beamwidth	2.4-GHz band: 69° 5-GHz band: 60°	
Length	7.25 in (18.4 cm)	
Width	7.25 in (18.4 cm)	
Depth	1 in (2.5 cm)	
Weight	1.3 lb (0.59 kg)	
Cable	3 ft (91.4 cm) plenum rated, UV stable	
Connector	RP-TNC	
Environment	Indoor	
Temperature range	32°F to 133°F (0°C to 56°C)	

350098

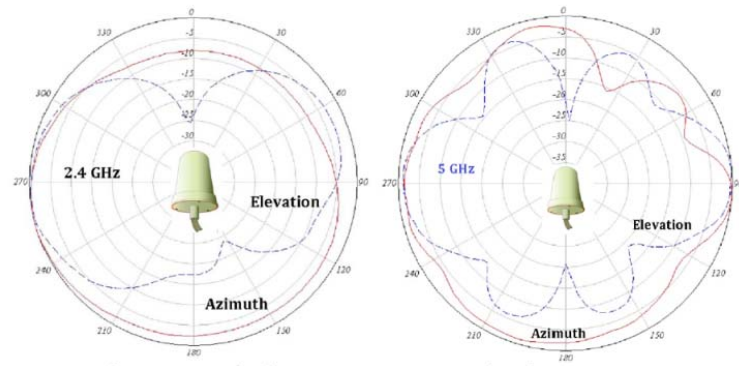
Figure 35 Radiation Pattern for the AIR-ANT2524V4C-R Dual-Band Omni Antenna

350100

Figure 36 Specifications for the AIR-ANT2544V4M-R Dual-Band Omni Antenna

Antenna type	4-element MIMO omnidirectional	
Operating frequency range	2400-2484 MHz	
	5150-5850 MHz	
Nominal input impedance	50Ω	
VSWR	2:1 or less	
Peak gain	2.4-GHz band: 4 dBi	
	5-GHz band: 4 dBi	
Polarization	Linear, vertical	
Azimuth plane (3 dB beamwidth)	Omnidirectional	
Elevation plane (3 dB beamwidth)	2.4-GHz band: 60°	
	5-GHz band: 33°	
Length	8.6 in (21.8 cm)	
Diameter	6.3 in (16 cm)	
Weight	Antenna: 1.48 lb. (671.5 g);	
Cable	3-ft. (91.4 cm) plenum	
Connector	RP-TNC	
Environment	Indoor/outdoor	
Temperature range	-22° F to 158° F (-30° C to 70° C)	

350242

Figure 37 Radiation Patterns for the AIR-ANT2544V4M-R Dual-Band Omni Antenna

129021

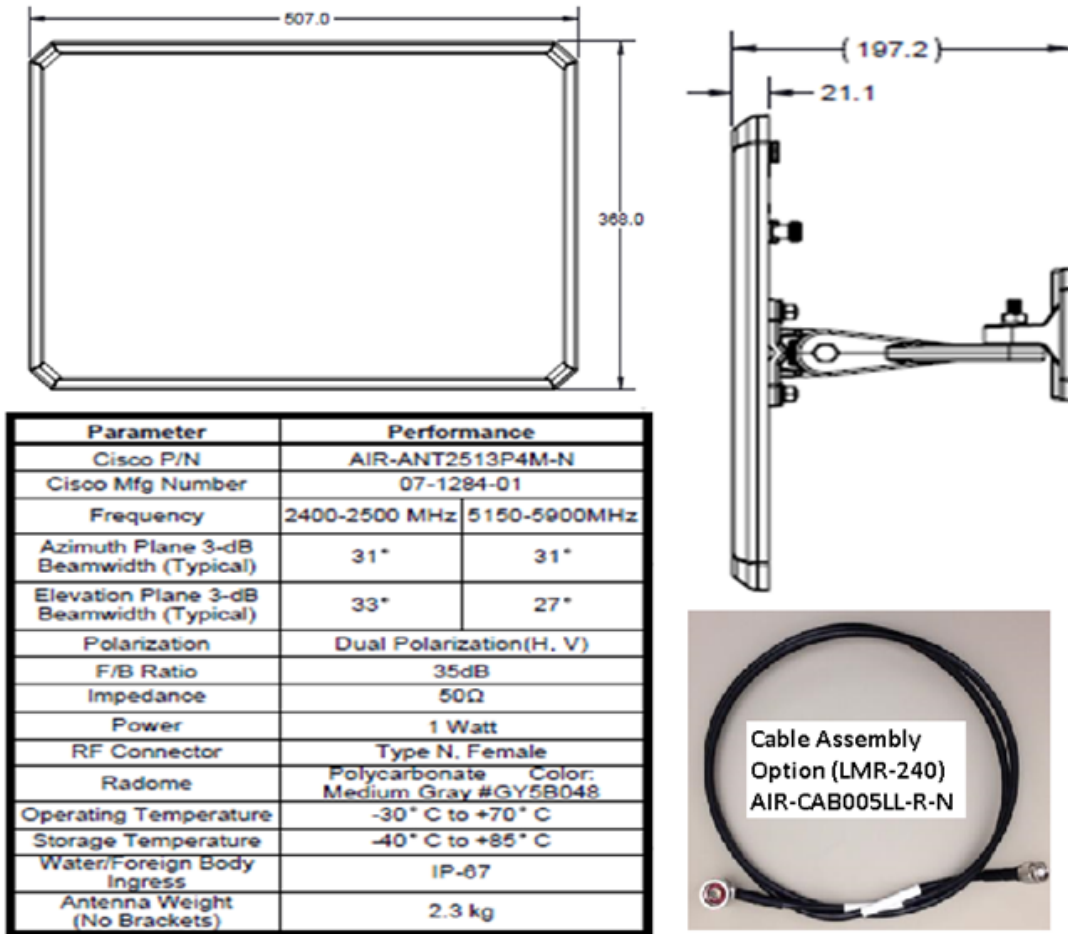
**Note**

For granular pattern, refer to the individual specification sheet of the respective antennas.

Stadium Antenna Option for AP 3702p

This antenna is often used by professional installation for outdoor deployments often requiring higher gain. This antenna has 2 vertically polarized and 2 horizontally polarized ports. Antenna connectors on the back of the antenna are “N” style female RF connectors. An optional cable assembly (4 cables) can be ordered—part number AIR-CAB005LL-R-N or the installers can use their own cable assemblies.

Figure 38 Mechanicals for AIR-ANT2513P4M-N



352183

Figure 39 Radiation Pattern of 2.4 GHz AIR-ANT2513P4M-N

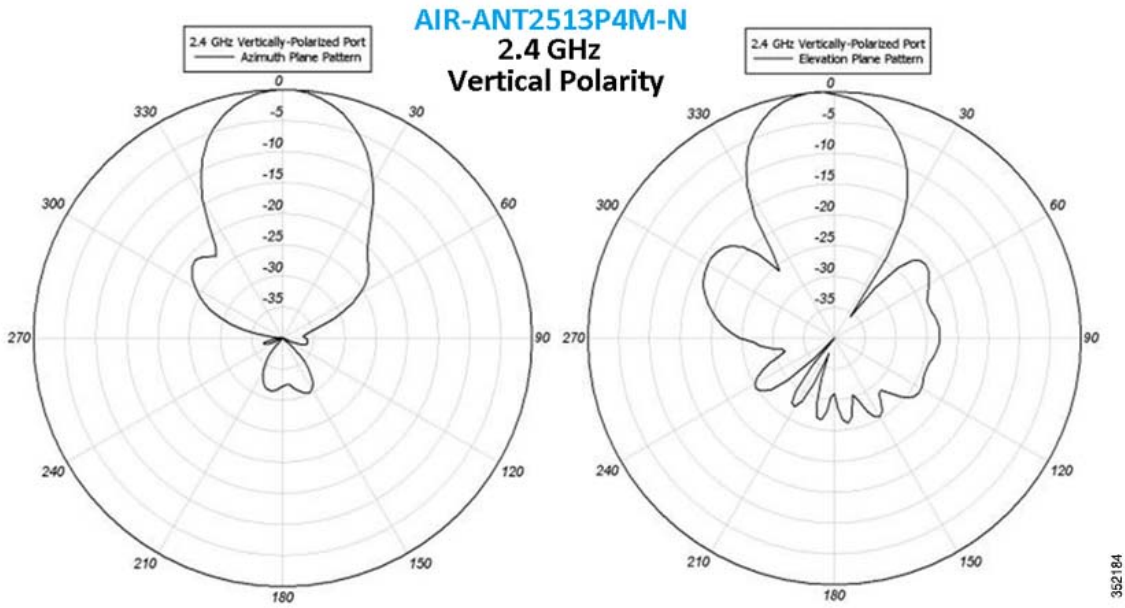
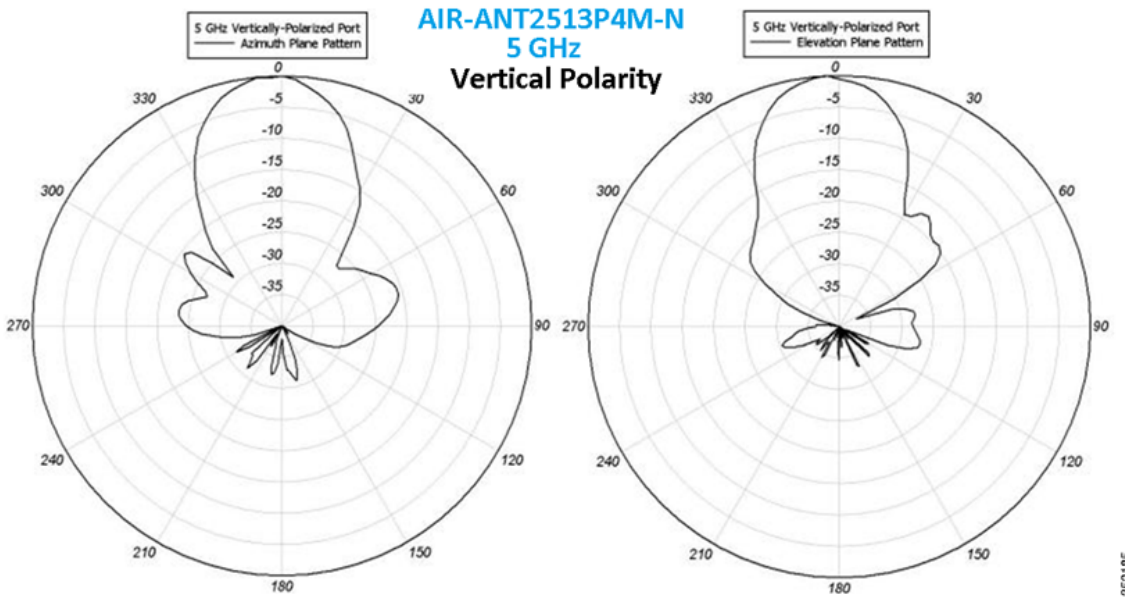


Figure 40 Radiation Pattern of 5 GHz AIR-ANT2513P4M-N



AP 3700i, 3600i, 2600i, and AP 1600i

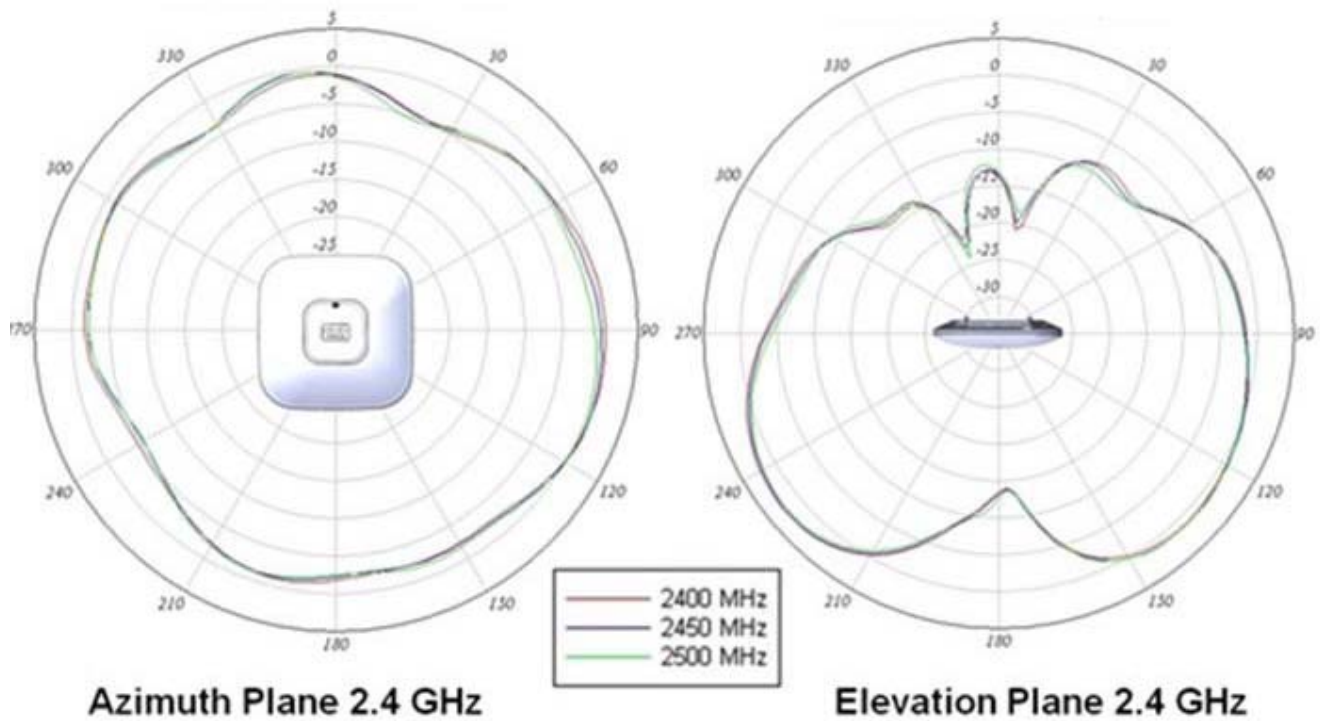
Antenna patterns for the AP 3700i integrated antenna model are shown in [Figure 41](#) and [Figure 42](#).

Antenna patterns for the AP 3600i integrated antenna model are shown in [Figure 43](#) and [Figure 44](#).

Antenna patterns for the AP 2600i integrated antenna model are shown in [Figure 45](#) and [Figure 46](#).

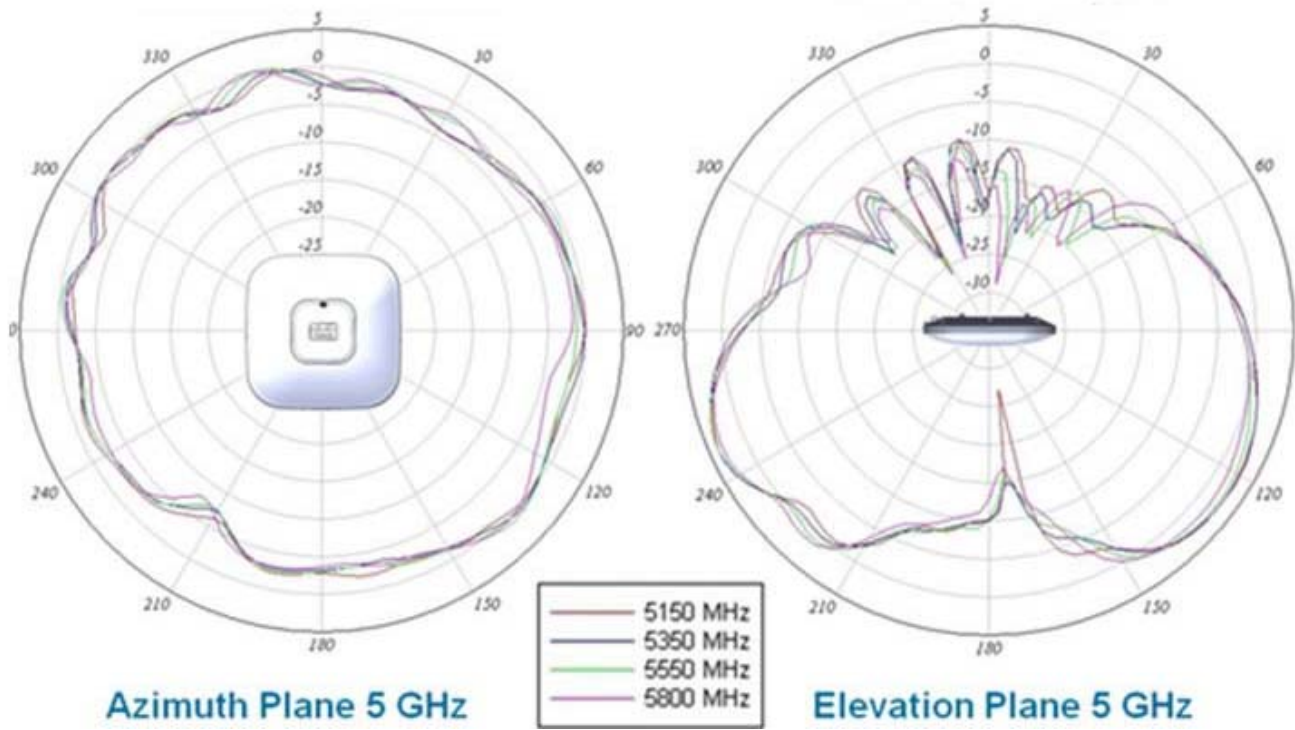
Antenna patterns for the AP 1600i integrated antenna model are shown in [Figure 47](#) and [Figure 48](#).

Figure 41 Radiation pattern for AP 3700i Internal Antenna @ 2.4 GHz



353601

Figure 42 Radiation Pattern for AP 3700i Internal Antenna @ 5 GHz



353602

Figure 43 Radiation Patterns for the AP 3600i @ 2.4 GHz

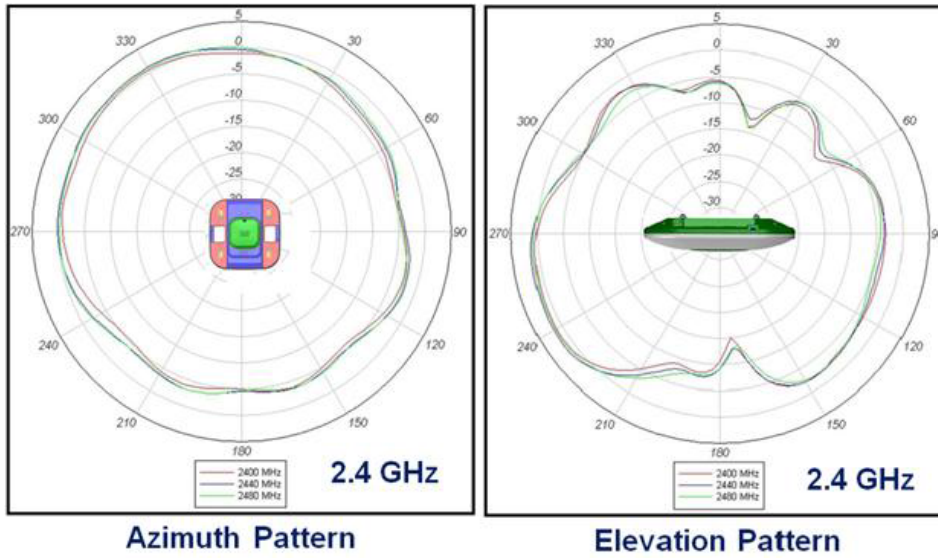


Figure 44 Radiation Patterns for the AP 3600i @ 5 GHz

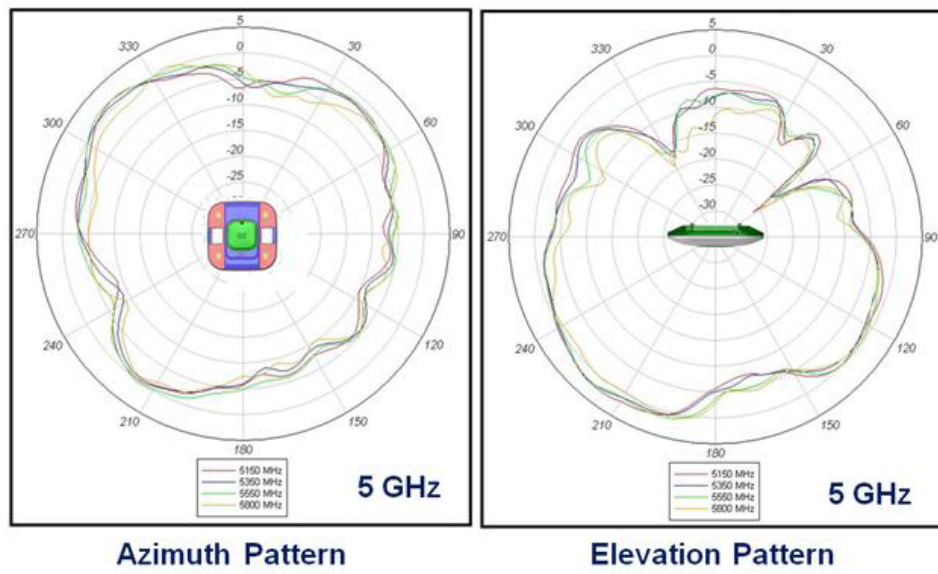


Figure 45 Radiation Patterns for the AP 2600i @ 2.4 GHz

AP-2600i – Antenna Patterns 2.4 GHz

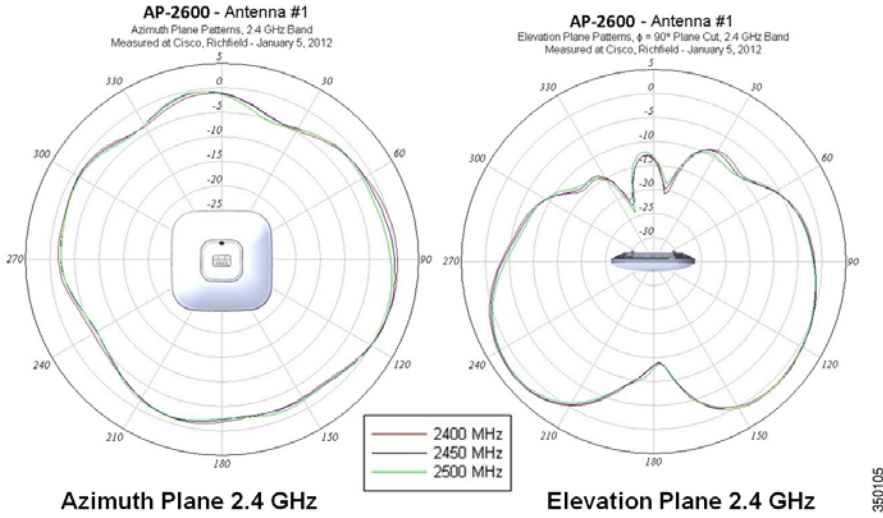


Figure 46 Radiation Patterns for the AP 2600i @ 5 GHz

AP-2600i – Antenna Patterns 5 GHz

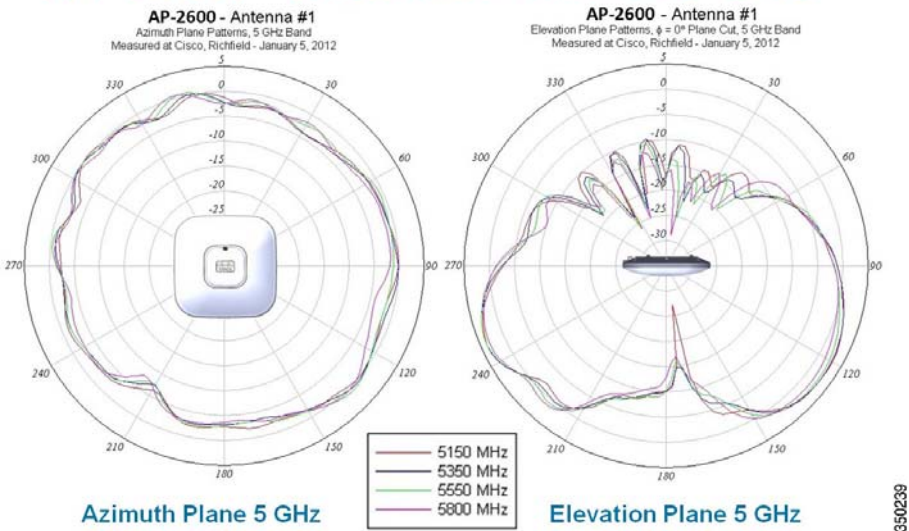
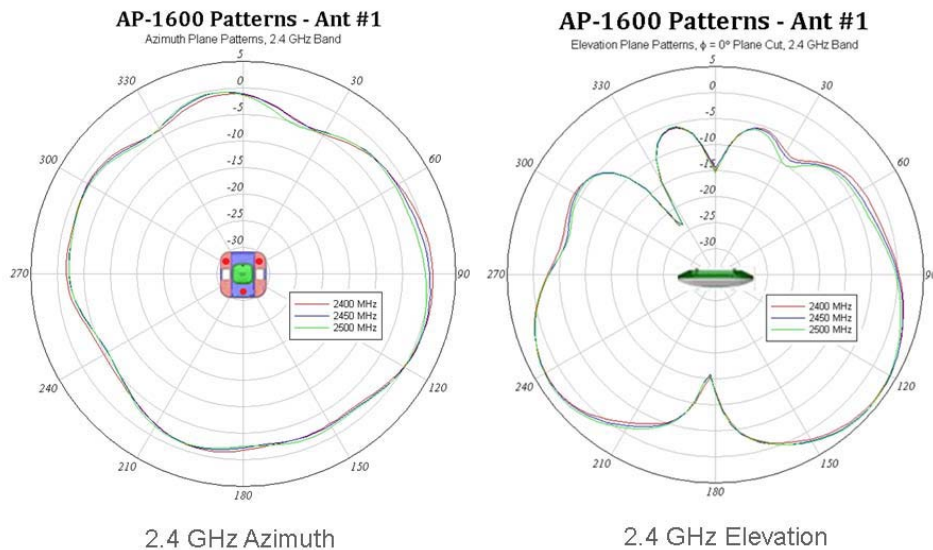


Figure 47 Radiation Patterns for the AP 1600i @ 2.4 GHz

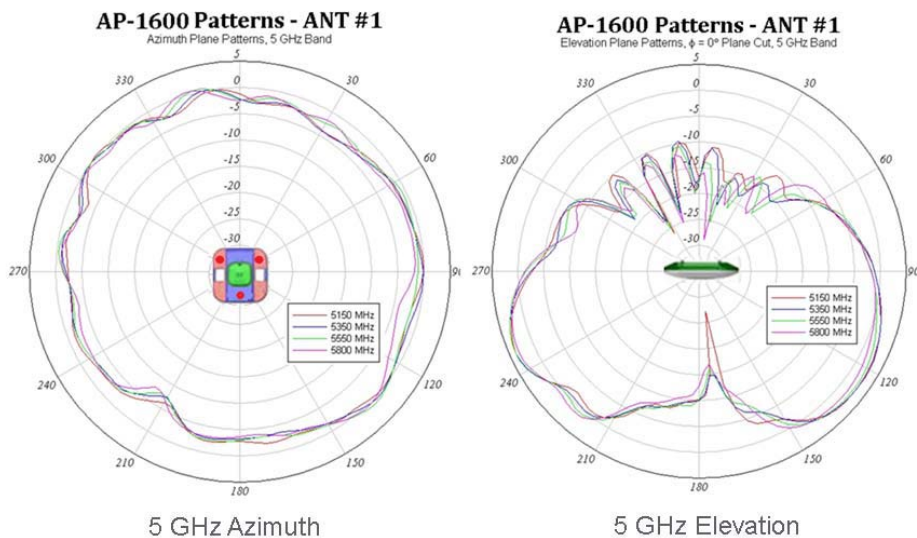
AP-1600 2.4 GHz antenna patterns



350106

Figure 48 Radiation Patterns for the AP 1600i @ 5 GHz

AP-1600 5 GHz antenna patterns



350107

Understanding External Antenna Deployments

All Cisco antenna connectors are labeled; “A,” “B,” “C,” and so on. “A” has a higher priority than “B” or “C/D” so, if the AP supports say 3 or 4 antennas and you only have 2 antennas, you can use them on ports “A” and “B” for a short term until you install the additional antennas.

While it is not recommended that you use less antennas—the product (in a pinch) supports 802.11a/b/g clients or single spatial stream N clients using only one or two antennas. However, there is a significant performance hit and you will lose ClientLink functionality. Should you do this, you might also have to configure the AP in the software so as not to use the other antennas.

**Note**

The AP 1600 has three antenna ports (not configurable because it is an entry level AP). The AP 2600/3600 has four configurable antenna ports—one extra transceiver (receiver/transmitter per band).

When using a MIMO (dual-radiating element antennas) such as:

AIR-ANT2524V4C-R – Dual-band Omni-directional – 2/4 dBi Ceiling mount Omni use

AIR-ANT2544V4M-R– Dual-band Omni-directional – 4/4 dBi Wall mount Omni use

AIR-ANT2566P4W-R– Dual band directional – 6 dBi Patch wall mount use

It is not critical which antenna lead goes onto which antenna port on the AP as long as all the antenna ports on the AP are connected to the antennas. In the case of the Patch antenna AIR-ANT2566P4W-R, because the elements are spaced physically apart (side by side) in the plastic housing, there will be a slight improvement if you use the outer two elements on the Patch on ports “A” and “B”. This is only a small improvement and not a critical one and that is why we do not label them.

Figure 49 6 dBi Patch Antenna – While Not Critical, Ideally Ports “A” and “B” are Used on the ends.



Figure 50 AP 1600 Note port “A” is Spaced Furthest from “B” and “C” for Best Diversity



Remember, the best antenna placement is the one where the antenna is physically closest to the actual users. If you are mounting multiple single package dual band antennas externally, such as dipoles, spacing is not critical but try to space them as far apart as practical (with “A” and “B” as the furthest apart).

Figure 51 *Antenna Placement- Avoid Spacing Antennas Further than 10 Ft (Antennas Should be in the Same RF Coverage Area)*



Note

Avoid using single band (single radiating element antennas) such as those used with earlier 3500 series AP products because they are not fully compatible with the newer 1600/2600 and 3600 Series APs. Antennas for the 1260 and 3500 series are single radiating element antennas made for each individual band. The 3600, 2600, and 1600 APs use dual band - dual radiating element antennas and are branded with an orange marking see [Figure 49](#) and [Figure 50](#).

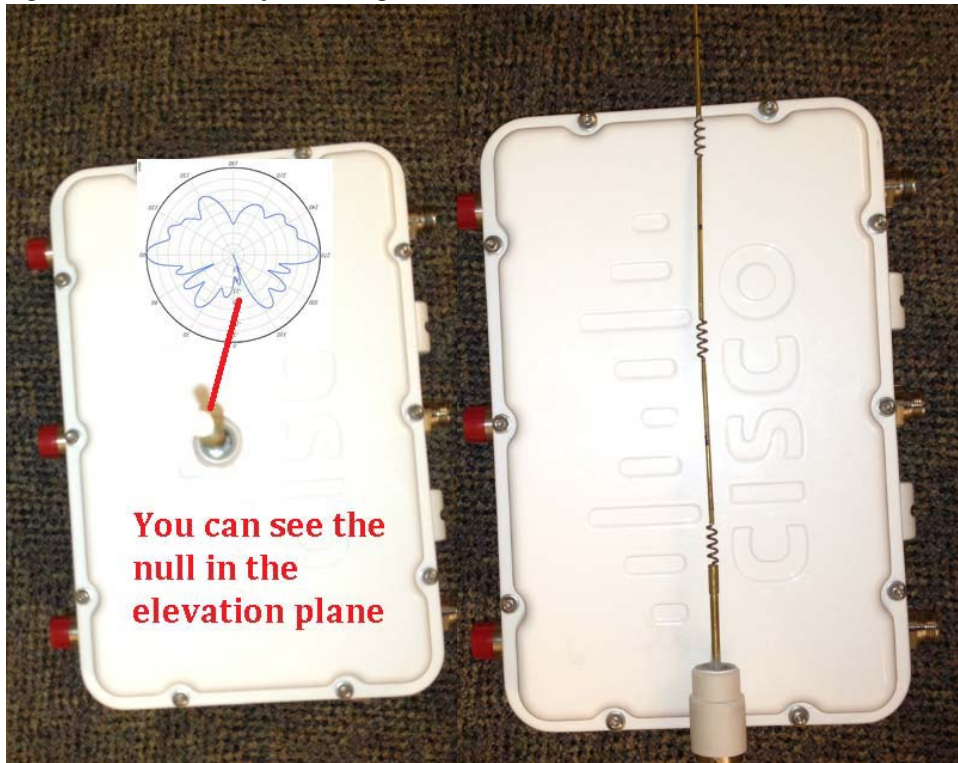
Figure 52 *In Areas where High Amounts of Metal are Present, a Site Survey is Required*



350111

When using 802.11n rates in areas with high metal, such as distribution areas or airport hangars sometimes, lower gain antennas (on the ceiling) can perform better because they tend to radiate the signal in all directions increasing the chance that multi-path will enhance the signal. Of course, if you have a clear shot, a patch antenna at the end of an aisle at roughly the same height or just above the (WLAN client) is preferred.

Figure 53 Example of a High Gain Antenna AIR-ANT2480V-N with its Cover Removed



A high gain antenna may have a null or dead spot directly underneath it because the antenna element is often much longer with less metal surface area available to conduct the radio wave if you are located directly underneath it. However, the further away you are from the antenna the more surface is available and so the better it performs.

802.11n Primer - Understanding Spatial Streams

For a video on understanding the fundamentals of Spatial Streams refer to the following URL:

<http://www.cisco.com/en/US/netsol/ns767/index.html>

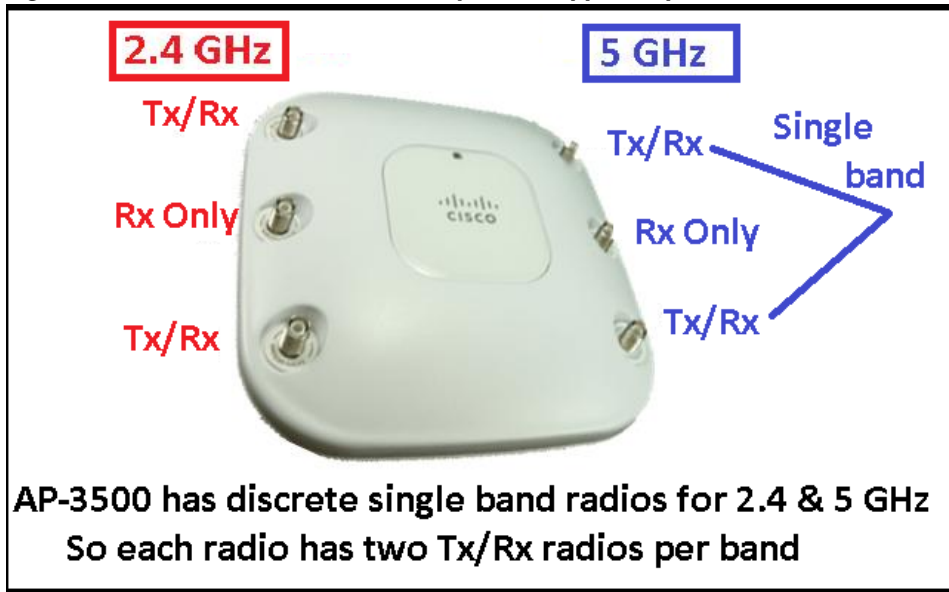
MIMO which refers to a radio system that has multiple separate receive and transmit paths, is at the heart of 802.11n. MIMO systems are described using the number of transmitters and receivers in the system. For example, “two by one” or 2x1 refers to a system with two transmitters and one receiver (Figure 55).

Spatial streams, the act of transmitting information out of more than one antenna port concurrently, require that the APs have at least two or more transmitters and support elements of 802.11n, e.g., support of multiple spatial streams.

In the 802.11a/b/g days, data rates were actual Mbps rates, such as 2, 11, 54 Mbps and so on, and was done with one transmitter. In the case of the AP 3500 series, it has two transmitters per band so it supports 802.11n data rates of up to 300 Mbps using two spatial streams.

With 802.11n, the different data rates are called Modulation and Coding Scheme (MCS) index value, and the value also defines how many streams are used. The AP 3500 supports up to 300 Mbps MCS rate 15 when configured with a bonded channel and short guard interval (GI). Refer to Figure 55. The MCS values correspond to actual data rates.

Figure 54 AP 3500i/e is a 2x3:2 System (Supports up to 2 Transmit Chains)



Note 2x3:2 implies two transmitters and three receivers supporting 2 spatial streams.

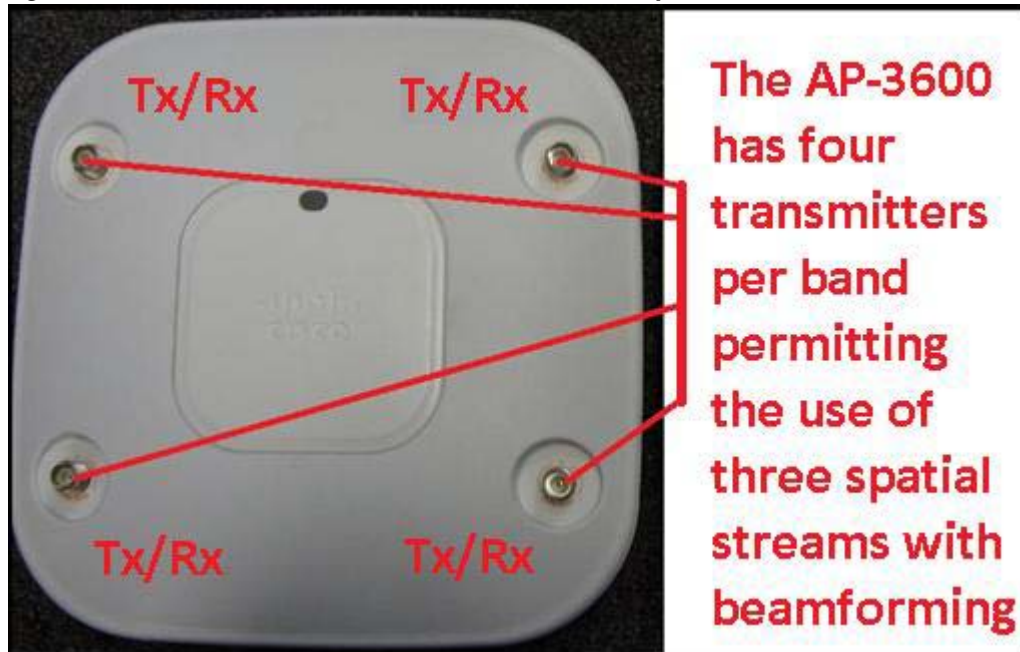
Figure 55 Modulation and Coding Scheme: 2SS Bonded Channel Supports up to 300 Mbps

MCS	Coding	Modulation	Streams	Signal BW = 20 MHz		40 MHz	
				GI = 800 nS	GI = 400 nS	GI = 800 nS	GI = 400 nS
MCS0	1/2	BPSK	1	6.5	7.2	13.5	15
MCS1	1/2	QPSK	1	13	14.4	27	30
MCS2	3/4	QPSK	1	19.5	21.7	40.5	45
MCS3	1/2	16-QAM	1	26	28.9	54	60
MCS4	3/4	16-QAM	1	39	43.3	81	90
MCS5	2/3	64-QAM	1	52	57.8	108	120
MCS6	3/4	64-QAM	1	58.5	65	131.5	135
MCS7	5/6	64-QAM	1	65	72.2	135	150
MCS8	1/2	BPSK	2	13	14.4	27	30
MCS9	1/2	QPSK	2	26	28.9	54	60
MCS10	3/4	QPSK	2	39	43.3	81	90
MCS11	1/2	16-QAM	2	52	57.8	108	120
MCS12	3/4	16-QAM	2	78	86.7	162	180
MCS13	2/3	64-QAM	2	104	115.6	216	240
MCS14	3/4	64-QAM	2	117	130	243	270
MCS15	5/6	64-QAM	2	130	144.4	270	300

Unlike the AP 3500, the newer AP 3600 supports 3SS with twice as many transmitters (4 per band) enabling faster data rates of up to 450 Mbps. Note that there is an extra radio for redundancy and enhanced performance (upstream and downstream) and the AP 3600 can also beamform to 3SS clients as well.

Using a dual-band design, the AP 3600 has a total of 8 transceivers (transmitter/receivers) using only 4 antennas (Figure 56). Four radios are used in each band, 2.4 GHz and 5 GHz.

Figure 56 AP 3600: 4 Transmitters and 4 Receivers per Radio Band



The AP 2600, while similar to the AP 3600, is slightly different because it is a 3x4:3, meaning the AP 2600 also has 4 antennas to help on the receive (upstream signal) but it only uses three transmitters on the downstream side.

The yellow sections of the MCS chart in Figure 57 depict the faster data rates supported by the AP 3600. The AP 3600 supports 802.11a/b/g rates as well as 802.11n rates of MCS values 0-23.

Figure 57 AP 2600/3600 Supports up to 450 Mbps (MCS rates 0-23) AP 1600 (MCS rates 0-15)

MCS	Coding	Modulation	Streams	Signal BW = 20 MHz		40 MHz	
				GI = 800 nS	GI = 400 nS	GI = 800 nS	GI = 400 nS
MCS0	1/2	BPSK	1	6.5	7.2	13.5	15
MCS1	1/2	QPSK	1	13	14.4	27	30
MCS2	3/4	QPSK	1	19.5	21.7	40.5	45
MCS3	1/2	16-QAM	1	26	28.9	54	60
MCS4	3/4	16-QAM	1	39	43.3	81	90
MCS5	2/3	64-QAM	1	52	57.8	108	120
MCS6	3/4	64-QAM	1	58.5	65	131.5	135
MCS7	5/6	64-QAM	1	65	72.2	135	150
MCS8	1/2	BPSK	2	13	14.4	27	30
MCS9	1/2	QPSK	2	26	28.9	54	60
MCS10	3/4	QPSK	2	39	43.3	81	90
MCS11	1/2	16-QAM	2	52	57.8	108	120
MCS12	3/4	16-QAM	2	78	86.7	162	180
MCS13	2/3	64-QAM	2	104	115.6	216	240
MCS14	3/4	64-QAM	2	117	130	243	270
MCS15	5/6	64-QAM	2	130	144.4	270	300
MCS16	1/2	BPSK	3	19.5	21.7	40.5	45
MCS17	1/2	QPSK	3	39	43.3	81	90
MCS18	3/4	QPSK	3	58.5	65	121.5	135
MCS19	1/2	16-QAM	3	78	86.7	162	180
MCS20	3/4	16-QAM	3	117	130	243	270
MCS21	2/3	64-QAM	3	156	173.3	324	360
MCS22	3/4	64-QAM	3	175.5	195	364.5	405
MCS23	5/6	64-QAM	3	195	216.7	405	450

3 Spatial Stream MCS Rates

These additional MCS rates permit more choices for the client supporting 3SS when making rate-shifting decisions because the rate-shifting algorithm maintains the best overall throughput connection.

Clients that Support 3 Spatial Streams

Clients with 3SS support are starting to become commonplace. Because the new 802.11ac specification starts to get traction, many newer client adapters will have the newer chipsets and support 3SS as a subset to 802.11ac. Additionally, unlike many of our competitors the Cisco AP 1600/2600/3600 and 3700 fully supports all the DFS channels for more usable channels in the 5 GHz range. More clients, especially 802.11ac clients, will start to emerge supporting these newer channels in 802.11n modes as well.

Currently the most popular 3SS client is the Apple 2011 MacBook Pro, because it is based upon the Broadcom BCM4331 chipset and a small USB adapter by Trendnet, “TEW 684UB”, based on the Ralink chipset.

Additionally, the Intel 5300 and 6300 has supported 3SS for a long time. Perhaps, because of the different hardware platforms this card is installed in, testers have observed good throughput on many notebooks (+320 Mbps) and reduced throughput on other notebooks such as 240 Mbps. If you experience low throughput using the Intel card, one suggestion might be to try a MacBook Pro or Trendnet adapter, and if they perform well try another notebook with the Intel card or perhaps open a case with Intel or the laptop manufacturer for a possible remedy. During the AP 3600 beta trials, we observed differences in performance with different notebooks using the Intel 6300 card.



Note

Sometimes it can be difficult to reliably maintain a 3SS link because it is easy for the client to rate-shift out of the 3SS mode. The client plays an important role in the ability to maintain a 3SS link, so it can vary with the quality of the client being used and the test environment.

The AP 3600 with its extra radio per band can use the extra redundant radio to beamform (because of ClientLink 2.0) and uses this to maintain the advantage of 3SS links. Cisco ClientLink 2.0 can also improve the overall performance of 802.11n clients using 1, 2, and 3 spatial streams and legacy .11a/g clients.

Understanding Beamforming – Legacy ClientLink 1.0 and 2.0

ClientLink 1.0 was first introduced with the 1250 and 1140 series APs; it is a method of creating a stronger signal on the downlink side for 802.11a/g clients by hearing the clients on the uplink and then adjusting the transmitter timing so the signal appears much stronger at the client end.

This feature used to be user configurable; however, starting with 7.2 code stream it is now switched on by default and is not user configurable as there is no benefit to disabling it.

The AP 3600 fully supports ClientLink 1.0 for 802.11a/g clients but has a greater advantage because it also supports all 802.11n clients including 1, 2, and 3 spatial stream clients. This capability is called ClientLink 2.0. There is a distinct advantage with ClientLink 2.0 over the 802.11n enhanced beamforming specification, because ClientLink 2.0 works with all clients today and does not require any client sounding or support ([Figure 32](#)).

Figure 58 **ClientLink 2.0**

	802.11n (EBF) Enhanced Beam Forming	Client Link 2.0 (CVBF)
WLAN Client		Cisco Vector Beam Forming
Works for Multiple Spatial Stream HT Clients	Not yet	All
Works for 1 SS HT Clients	Not yet	All
Works for Legacy Clients (11 a/g)	None	All
General Requirements/Dependencies		
Requires Client Cooperation/Support	Yes	No
Requires Use of Channel Time for Sounding	Yes	No
Can be Used w/ Clients Currently on Market	No	All 11a/g/n

360115

With beamforming technology, changing the timing of two transmitters creates a stronger signal for the receiver, e.g, a client device. This is referred to as constructive interference. Sometimes, however, the opposite happens and the signals cancel each other out. This is called destructive interference. Refer to [Figure 59](#).

Figure 59 Beamforming (constructive and destructive interference)

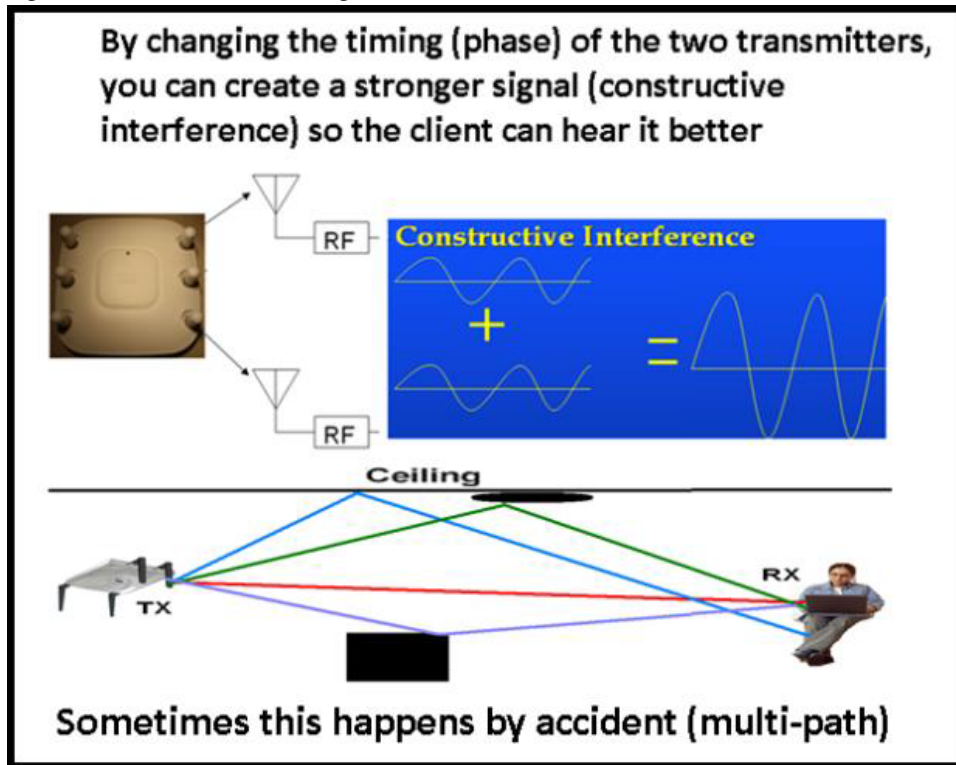
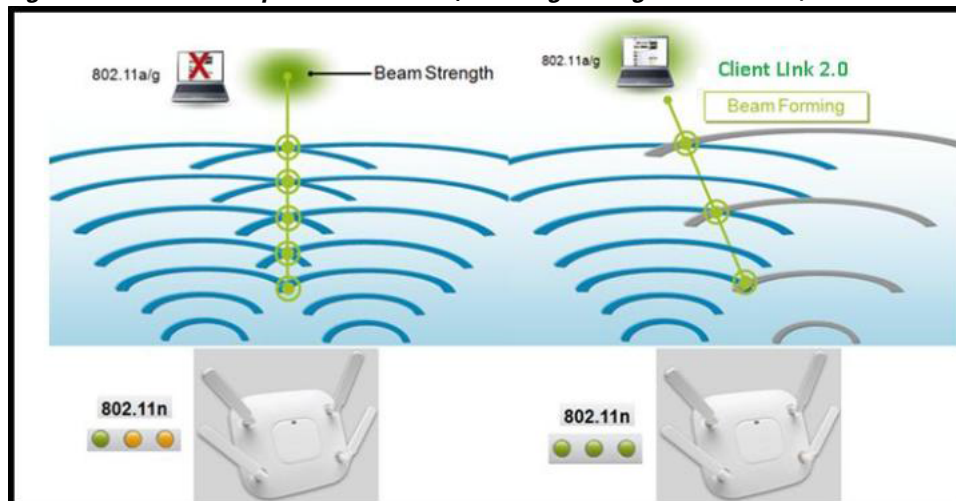


Figure 60 provides a visual comparison of ClientLink 1.0, using 1 spatial stream, and ClientLink 2.0, using 3 spatial streams. Unlike the AP 3500, the AP 3600 provides multiple spatial streams using four transceivers for even greater performance. AP 3600 can beamform to all 802.11a/g and 802.11n 1, 2 and 3 spatial stream clients. The signal is x3 as each stream is beamformed.

Figure 60 Example of ClientLink (directing the signal to a client, in this case 1 spatial stream)



Note

In order to beamform to clients using 3 spatial streams, since 3 transmitters are used in the transmissions, the AP needs at least one additional radio to beamform. The AP 3600 and AP 3700 use 4 radios per band and can beamform to clients using 3 spatial streams.

To summarize, Cisco ClientLink takes the received signals heard from the client on the uplink, calculates how the multipath signal looks from those streams, and then on the reciprocal side (transmit downlink) figures out the optimal way using all four radios to best form the signal (transmit beamforming) to enable the client to best decode (receive the signal on the downlink) with the least amount of retries.

ClientLink 3.0 with AP 3700 enables beamforming to all 802.11n and 11ac clients, including 3SS clients. ClientLink 2.0 with AP 3600 enables beamforming to all 802.11n clients, including 3SS clients, and can do so for up to 128 clients at a time.

**Note**

AP 1600 supports less clients (32) and does not support 3-ss. ClientLink 1.0 supported a maximum of 15 clients at a time. ClientLink 2.0 significantly improves throughput and coverage of up to 60% on the downlink side for a much better 802.11n client connectivity and enhancing the Bring Your Own Device (BYOD) experience.

Understanding Cisco TxBF (ClientLink) and IEEE (ECBF)

Understanding the need and value of ClientLink 3.0

Enhanced Beam Forming (EBF) did not make it in 802.11n, but it is now in 802.11ac. This was achieved with 802.11ac after a single sounding method was finally agreed upon. Note that EBF is changed to Explicit Compressed Beam Forming (ECBF).

But, today, 802.11ac clients do not support ECBF yet. Because, clients are still emerging and ECBF traction is slow.

ClientLink 3.0 with four antennas can also perform Tx×BF to 3-SS clients. No one else can do Tx×BF to 802.11ac 3-spatial stream clients, because you need four antennas to beamform to a three spatial stream client (n+1) to beamform.

Cisco AP 3700 supports ECBF (802.11ac method) and ClientLink 3.0.

Cisco ClientLink 3.0 works with all 802.11a/g/n and 802.11ac clients today.

For more information on Cisco ClientLink refer to the following URL:

http://www.cisco.com/en/US/prod/collateral/wireless/ps5678/ps11983/at_a_glance_c45-691984.pdf

Site Survey Considerations

While ClientLink dynamically beamforms and helps to maintain a robust signal which results in fewer retries, it was not designed to change the cell range. ClientLink creates a better connection experience, not larger cell size.

For this reason, when conducting a survey it is important to keep in mind that the AP 3600 cell sizes are generally the same or very similar to other Cisco APs. [Figure 61](#) depicts typical ranges in the 1 - 54 Mbps range. While it is always recommended to survey with the equipment you intend to deploy, a previous survey done with say an AP 3500 – would not be invalid for an AP 3600 deployment. [Figure 62](#) and [Figure 63](#) provide examples of the modulation types and signal-to-noise ratio (SNR).

Figure 61 AP 3600 Site Survey Ranges (Typical Cell Sizes Have Not Changed; AP 3500 and AP 3600 Cell Sizes are the Same)

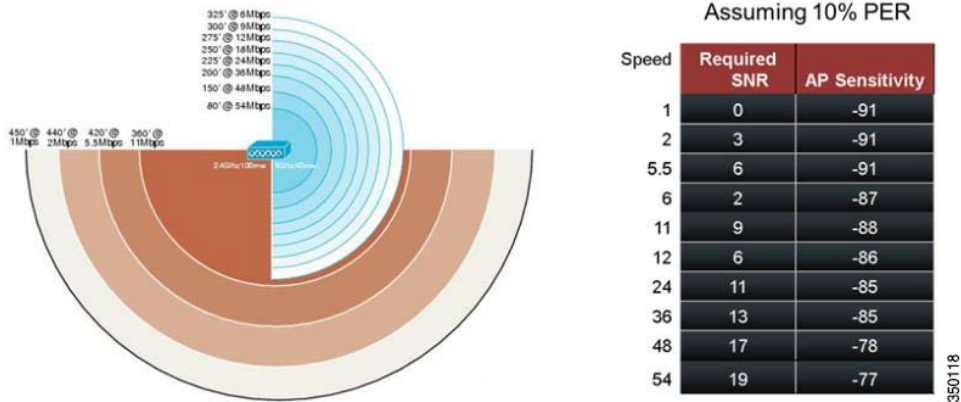


Figure 62 Site Survey Sensitivity and SNR

MCS Index 1/2/3 spatial stream	Modulation	Minimum Sensitivity 20 MHz	Required SNR (dB)
0/8/16	BPSK 1/2	-82	1
1/9/17	QPSK 1/2	-79	4
2/10/18	QPSK 3/4	-77	6.5
3/11/19	16 QAM 1/2	-74	9.75
4/12/20	16 QAM 3/4	-70	13
5/13/21	64 QAM 2/3	-66	17.25
6/14/22	64 QAM 3/4	-65	18.75
7/15/23	64 QAM 5/6	-64	19.75

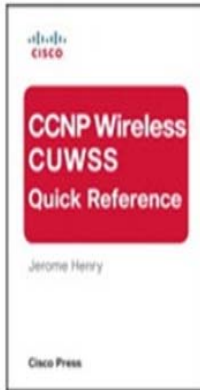


Note

The SNR for 3SS is 28 dB per IEEE, but Cisco RF engineers recommend 30 - 32 dB for best performance.

Figure 63 Site Survey Sensitivity and SNR

CCNP Wireless CUWSS Quick Reference (eBook)



By Jerome Henry.
Published by Cisco Press.
Series: Quick Reference Sheets.

Published: Sep 9, 2010
Copyright 2011
Dimensions:
Pages: 96
Edition: 1st

RSSI/SNR Guidelines				
Data Rate	2.4 GHz Min RSSI	2.4 GHz Min SNR	5 GHz Min RSSI	5 GHz Min SNR
20\40 MHz	-82	11	-79	14
14.4\30	-79	14	-76	17
28.9\60	-77	16	-74	19
57.8\120	-74	19	-71	22
86.7\180	-70	23	-67	26
115.6\240	-66	27	-63	30
130\270	-65	28	-62	31
144.4\300	-64	29	-61	32

350120

General Considerations Regarding APs

Following are some guidelines to remember regarding all APs:

1. Always try to mount the AP as close to the users as possible for best performance. Be aware of the environment; for example, hospitals have metal doors and coverage can change when the doors close. Old buildings can have metal grid work in the plaster or asbestos. Avoid mounting the AP or antennas near metal objects, as doing so can change the coverage area.
2. When using the 2.4 GHz frequency, the same 1, 6, and 11 channel scheme is used as the 5 GHz channel scheme (Figure 64). Avoid putting all of the APs on the same channel, and reuse channels as you can. See our other deployment guides for more on this topic.

- Faster PHY rate 1.3 Gbps over the typical 450 Mbps of 802.11n.
- Introduction of faster modulation 256 QAM over the 64 QAM of 802.11n – This creates many new data rates similar to 802.11n but in many cases faster rates with single stream and multiple stream devices.
- Ability to bond 80 MHz channels versus 40 MHz bonding of 802.11n – This can greatly enhance the throughput of devices that only support 1 spatial stream by extending the usable bandwidth of the device (often portable battery operated devices lacking multiple radios) spatial streams.
- Explicit Compressed Beam Forming – This is similar to what was proposed in 802.11n and is a method whereas the client can take advantage of sounding mechanisms to essentially tell the Access Point how to better beam form the signal back to the client. This functionality only works with 802.11ac clients and is supported with the Cisco Wave-1 module but this does not negate the value of Cisco ClientLink which is still used by the primary 802.11n radios as ClientLink benefits all 802.11a,g, and n clients.
- With regard to Cisco products, the 802.11ac module in the AP 3600 is a 5 GHz only module because 802.11ac does not scale well in 2.4 GHz due to the limited channels and bandwidth limitations (it is not practical to bond channels in 2.4 GHz) in an enterprise deployment and non-standard “turbo modes” don’t scale.

Understanding 802.11ac (wave-1) Elements:

Figure 65 1 Spatial Stream MCS Rates for 801.11n (left) and 1 Spatial Stream MCS Rates for 802.11ac

802.11ac (Wave-1) introduces 256-QAM

Faster throughput happens when you can use more complex Modulation Coding Schemes (MCS) rates

MCS	Coding	Modulation	Streams
MCS0	1/2	BPSK	1
MCS1	1/2	QPSK	1
MCS2	3/4	QPSK	1
MCS3	1/2	16-QAM	1
MCS4	3/4	16-QAM	1
MCS5	2/3	64-QAM	1
MCS6	3/4	64-QAM	1
MCS7	5/6	64-QAM	1

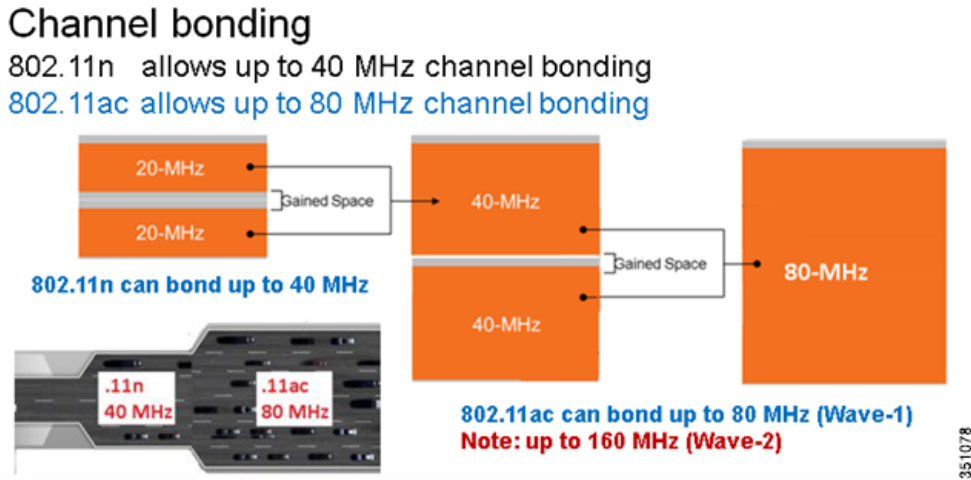
802.11n 1-ss MCS up to 64-QAM
64-QAM uses 6 bits per symbol

MCS	Coding	Modulation	Streams
0	1/2	BPSK	1
1	1/2	QPSK	1
2	3/4	QPSK	1
3	1/2	16-QAM	1
4	3/4	16-QAM	1
5	2/3	64-QAM	1
6	3/4	64-QAM	1
7	5/6	64-QAM	1
8	3/4	256-QAM	1
9	5/6	256-QAM	1

802.11ac 1-ss MCS supports 256-QAM
256-QAM uses 8 bits per symbol (up to 4x faster)

351077

Figure 66 Channel Bonding Allows More Usable Bandwidth (Similar to a Multi-Lane Highway)



So, the net take away is that 802.11ac permits faster speeds, allowing clients to take advantage of the additional bandwidth and complex modulation for over-all performance enhancement while maintaining backward compatibility with 802.11n and 802.11a/g systems already in place.

Figure 67 Faster Speeds with Newer MCS Rates and Bonding – Up to 433 Mbps on 1 Stream.

So why is channel bonding so important?

MCS rates @ 1 Spatial Stream in Mbps

MCS	Modulation	Ratio	20 MHz channel 400 ns GI	40 MHz channel 400 ns GI	80 MHz channel WAVE-1 400 ns GI
0	BPSK	1/2	7.2	15	32.5
1	QPSK	1/2	14.4	30	65
2	QPSK	3/4	21.7	45	97.5
3	16-QAM	1/2	28.9	60	130
4	16-QAM	3/4	43.3	90	195
5	64-QAM	2/3	57.8	120	260
6	64-QAM	3/4	66	135	292.5
7	64-QAM	5/6	72.2	150	325
8	256-QAM	3/4	86.7	180	390
9	256-QAM	5/6	N/A	200	433.3

More than 1-SS requires that the client have more radios which draw more power.

The goal is to enable devices to have more throughput with less battery draw

Most mobile devices will use 1-SS

Tablets & laptops can use 2-SS or more

351079

Faster speed occurs when you use multiple spatial streams. Newer smart phones may likely support only 1 spatial stream, but higher-end tablets and notebooks will typically support 2 or more spatial streams. Let us look at speeds when using 2 and 3 spatial streams.

Figure 68 Typical Wave-1 Data Rates @ 2 and 3 Spatial Streams

802.11ac (Wave-1)

.11ac MCS rates (unlike 802.11n) don't exceed 0-9 -- but rather **it is 0-9** and then you **call out how many Spatial Streams** are being used so a chart like this is quite extensive.

Depicted to the right are 2 & 3 SS Supported in Wave-1 of the 8 possible spatial streams supported in Wave-2

1 stream (80MHz) is 433 Mbps
2 stream (80MHz) is 866 Mbps
3 stream (80MHz) is 1300 Mbps

802.11ac Data Rates				Mb/s					
				20 MHz		40 MHz		80 MHz	
				Guard	Interval	Guard	Interval	Guard	Interval
Spatial Streams	MCS Index	Modulation	Coding	800ns	400ns	800ns	400ns	800ns	400ns
2	0	BPSK	1/2	13	14.4	27	30	58.5	65
	1	QPSK	1/2	26	28.9	54	60	117	130
	2	QPSK	3/4	39	43.3	81	90	175.5	195
	3	16-QAM	1/2	52	57.8	108	120	234	260
	4	16-QAM	3/4	78	86.7	162	180	351	390
	5	64-QAM	2/3	104	115.6	216	240	468	520
	6	64-QAM	3/4	117	130	243	270	526.5	585
	7	64-QAM	5/6	130	144.4	270	300	585	650
	8	256-QAM	3/4	156	173.3	324	360	702	780
	9	256-QAM	5/6	*	*	360	400	780	866.7
3	0	BPSK	1/2	19.5	21.7	40.5	45	87.8	97.5
	1	QPSK	1/2	39	43.3	81	90	175.5	195
	2	QPSK	3/4	58.5	65	121.5	135	263.3	292.5
	3	16-QAM	1/2	78	86.7	162	180	351	390
	4	16-QAM	3/4	117	130	243	270	526.5	585
	5	64-QAM	2/3	156	173.3	324	360	702	780
	6	64-QAM	3/4	175.5	195	364.5	405	*	*
	7	64-QAM	5/6	195	216.7	405	450	877.5	975
	8	256-QAM	3/4	234	260	486	540	1053	1170
	9	256-QAM	5/6	260	288.9	540	600	1170	1300

351080

Understanding 802.11ac and the Option Module

Figure 69 AP 3600 and Feature Module



351081

AP 3600 Radio Module Cisco Part Number (AIR-RM3000AC-x-K9=)

Independent radio module providing 802.11ac (Wave-1) support within the AP 3600.

Features include:

- Complements existing 5 GHz 802.11n radio by providing an independent 802.11ac overlay.
- Permits faster throughput for 802.11ac clients by permitting channel bonding up to 80 MHz.
- Enhanced denser modulation 256 quadrature amplitude modulation (QAM) up from .11n's 64 QAM.
- 3x3 antenna design.

- Support for 1, 2, and 3 spatial streams.
- SU-MIMO (Single User Multiple Input Multiple Output).
- Explicit Beam Forming.
- 1.3 Gbps PHY (Approximately 1 Gbps MAC).

Module details and specifications can be found at the following URL:

http://www.cisco.com/en/US/prod/collateral/modules/ps12859/ps13128/data_sheet_c78-727794.html

Radio Module Operational Overview

With the module installed, the AP 3600 operates three active radios; 2.4 GHz and 5 GHz integrated radios (slots 0 and 1) as well as the 802.11ac 5 GHz module which shows up as (slot 2). This additional radio module takes the overall power draw of the Access Point to 18 Watts. If the power being supplied is limited (for example 15.4W 802.3af power) the Access Point will come up with the radio module disabled until a suitable source of power is available such as enhanced PoE, 802.3at PoE+, Power Injector, or the Local Power Supply AIR-PWR-INJ4.

Figure 70 Switches that Support the AP 3600

Modules and 3600 Series AP – Powered by Cisco Access Layer Switches

Cisco Switches 3600 Module Ready
80% of Cisco switches sold today are capable of enhanced or 802.3at PoE

Cisco Switches	802.3af - PoE	Cisco Enhanced PoE	802.3at - PoE+	UPoE
Module and 3700 – PoE ready Switches	X	✓	✓	✓
4500 E Series 47xx line card	X	X	✓	✓
4500 E Series all other copper line cards	X	X	✓	X
4500 non E Series	X	X	X	X
3850 24P/48P/48F models	X	X	✓	X
3750-X	X	X	✓	X
3750-E	X	✓	X	X
3750-G	X	X	X	X
3560-X	X	X	✓	X
3560-E	X	✓	X	X
3560-C	X	X	✓	X
2960-S	X	X	✓	X
2960-C	X	X	X	X
2960	X	X	X	X
Power Injectors		AIR-PWR-INJ4		

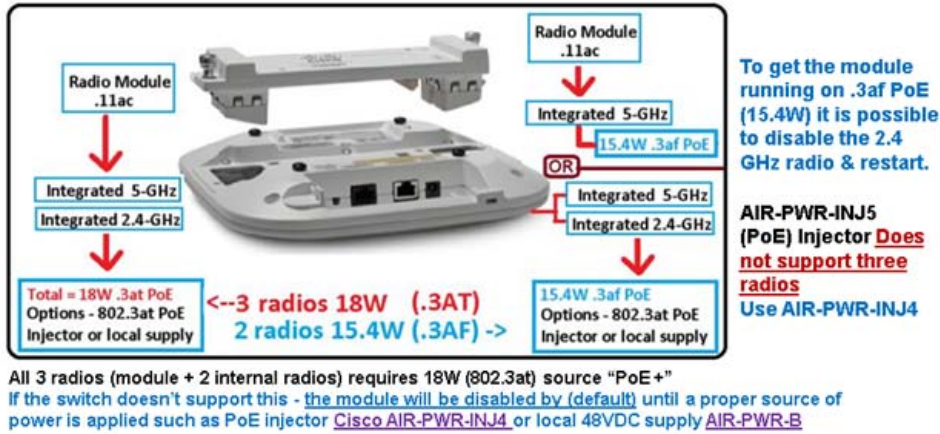
■ Sufficient Power for the 3600 Series Access Point

351082

If the installer/administrator determines a need to power the module from a 15.4 Watt power source (perhaps it is a high density installation where there is plenty of 2.4 coverage) or the AP is being used to augment areas with 802.11ac where 2.4 coverage is already present – if so, the internal 2.4 GHz radio can be disabled allowing the AP 3600 with the 802.11ac module to come up with full power and full functionality. This is a significantly better approach allowing installers to perform full functionality site surveys at 15.4 W (802.11af) rather than compromising RF power and shutting down Spatial Streams and other ports.

Figure 71 Module Powering Options for Low Power 802.3af (15.4 Watts)

Power over Ethernet – AC Radio Module



351083

Because the module antennas are internal, the module radiates much like an AP 3600i would because there are no RF connectors on the module, so the antennas “appear” as they would on the internal models.

Figure 72 Top Covers Removed from AP and Module to Show How Antennas are Mounted

Antennas and how things radiate AP-3600...



AP-3600 antenna system with module installed

This depicts how the module antennas are extended into the radiation ground plane for best performance



Module antennas (top) extend next to the four dual band integrated antennas

351084

Figure 73 Coverage is Optimized for Ceiling Placement and Radiates Omni-Directionally



If the AP is not mounted on the ceiling but rather on a wall, this may be acceptable for smaller deployments such as hotspots, kiosks, transportation or smaller coverage areas. But, in an enterprise deployment it could cause excessive roaming because the signal (think of the diagram above turned on its side) can radiate on the floor above and below rather than downward in a uniform 360 pattern.

If the module is installed in an AP 3600e (with external antennas), the 802.11ac module will still behave as described in [Figure 73](#) and if the dipole antennas are used, the AP will continue to provide an omni-directional coverage pattern. If a patch or other directional or high gain antenna is used, it can create a condition where you have two different coverage patterns. Because both the 5 GHz module radio and the internal 5 GHz 802.11n radio work together as one “blended” radio, it is best to keep cells uniform by using dipoles or by verifying if coverage is acceptable for your intended application.

Figure 74 Module Antennas are Internal to the Access Point and Radiate Omni-Directionally

Antennas and how things radiate AP-3600e...



AP-3600e antenna system with module The Radio module has three internal antennas
 Note: AP-3600e when using directional antennas **.11ac clients remain Omni-Directional**

Because the 5 GHz module operates in the same frequency band as the internal 5 GHz 802.11n radio, both radios have been purposefully designed to work in tandem (think of it as a blended radio) where both radios work as one radio, maintaining proper isolation and performance. Unlike the competition, this allows the 802.11ac client to be serviced by the module while legacy a/g and 802.11n clients are serviced by the integrated radios taking full advantage of ClientLink 2.0 to beam form without having to try and bounce clients around based on signal strength.

Given the AP has a dual core processor with one core managing the module which is similar to the “master/slave” approach that was used with IDE hard drives, the module always takes its direction from the “master” radio, in this case, the integrated 802.11n radio. So, when performing power and frequency selection, for example selecting 80 MHz (802.11ac) channel bonding, the integrated radio and not the module radio sets the “anchor” point where the frequency starts with the module performing the overlay extending the 80 MHz over the existing channel selected by the integrated “master” radio (802.11n radio). Both the integrated radio and the module also share the same SSIDs.

This virtual radio approach requires both radios to be enabled. You cannot disable the integrated 5 GHz radio and just run the .11ac radio module.

Client Band Steering

In order to optimize client performance, 802.11ac clients are able to take advantage of ECBF (Explicit Compressed Beam-Forming)—a IEEE 802.11ac standardized method of Beam-forming—similar in some ways to Cisco’s ClientLink but slightly different because the .11ac client needs to send “sounding information” to the AP and then the AP uses that sounding information (from the client) to best send the signal back to the client using beam-forming.



Note

ECBF only works with 802.11ac clients, Cisco ClientLink continues to be used with non-802.11ac clients to improve the overall performance of 802.11n and legacy clients resulting in an improved performance with all clients rather than just 802.11ac clients. This helps maintain solid connections to the AP without having to bounce clients off of the AP using other methods such as signal strength causing needless roaming with the client who is not actually engaged in passing traffic.

It is a significant advantage to allow the module to service the 802.11ac clients while the integrated radio services the non-802.11ac clients. Should the 802.11ac client require something the module radio does not support, (for example, Cisco Client Extensions “CCX elements”) the 802.11ac module will push the client to the integrated radio to service that request.

Radio Interfaces and Understanding Client Associations - AP 3600

As previously mentioned; the AP with module has three radio interfaces, “slots 0-2”, and shares the same RF power characteristics and SSIDs. This permits both radios to function as a “virtual” or “blended” radio, therefore; RRM controls both the integrated radio and the module radio.

Given there is no “greenfield” 802.11ac mode, RRM, Rogue AP detection, and SI (Spectrum Intelligence) all continue to function normally.

Figure 75 Understanding RF Radio Interfaces

Three separate and discrete radio interfaces

802.11ac Radios > Configure

General

AP Name AP-11AC

Admin Status

Operational Status UP

Slot # 2

11n and 11ac Parameters

11n Supported Yes

11ac Supported Yes

Slot 2

Slot 0 & 1

AC clients connect to the AC module only if they require other support (legacy or CCX) They are moved to other radio

5G N clients go to the internal radio as do AC clients if no module present AC clients will be "sticky" to the AC module

The two 5-GHz radios (integrated and module) work in **TANDEM** and use **same SSIDs** so they do not compete with each other. They work in concert to support same channels (with internal radio taking lead on frequency selection) and the module performing the AC “overlay” AP has a dual-core uP with the radio module on one core supporting up to 50 .11ac clients

351089

Because 802.11ac is fairly new, having a dedicated module handling the VHT (Very High Throughput) requests makes it easy to see which clients are connected at 802.11ac rates and which 802.11ac clients are actually connecting at 802.11n rates. This is accomplished by observing the SLOT ID.

Figure 76 Understanding Client Associations

How can I tell the .11ac client is on the .11ac radio?

Client MAC Addr	IP Address	AP Name	WLAN SSID	User Name	Protocol	Status	Auth	Port	Slot ID	Device Type
20:c9:80:ca:94:07	192.168.100.32	XALE3	ac	Unknown	802.11ac	Associated	Yes	1	1	Apple-Device
24:77:83:00:4f:a8	192.168.100.30	XALE3	ac	Unknown	802.11ac	Associated	Yes	1	1	Microsoft
60:25:66:17:75:2e	192.168.100.27	XALE3	ac	Unknown	802.11ac	Associated	Yes	1	2	Microsoft
60:25:66:17:80:a9	192.168.100.31	XALE4	ac	Unknown	802.11ac	Associated	Yes	1	2	Microsoft
60:25:66:17:81:01	192.168.100.29	XALE3	ac	Unknown	802.11ac	Associated	Yes	1	2	Microsoft

The client should report 11ac rates if connected to the 11ac module – If no module present the .11ac client should drop to .11n rates and connect to slot 1 (internal 5-GHz radio)

351090

Troubleshooting the Module (Basics)

Common issues arise because:

- Module is not screwed down tightly.
- Not enough PoE power (requires 802.3at) 18 W.
- Not configured correctly.
- Not understanding that the radios operate “together” so you need to configure the radio in slot 1 (5 GHz internal) first.
- Not understanding SSIDs’ for both 5 GHz need to be the same and all .11ac clients are sent to the .11ac module.

Figure 77 Both Thumbscrews Need to be Tight or Power is Not Applied



351091

Things to look for if the module is not found

- If the module is present, you will see the following message in the console: “module radio found and ok”.
- Console’s CDP message for Power “Power ok – HIGH POWER inline power source”.

- Perhaps, remove the module and verify if the AP is OK and then reinstall.
- Module should show up as “slot-2”.
- If you suspect PoE (try AIR-PWRB or AIR-PWR-INJ4).
- Module not designed to work with AIR-PWR-INJ5.

Some caveats regarding clients connecting to the module

- 802.11ac clients need same type of security as 802.11n to connect.
 - WPA/WPA2 with AES or Open.
 - CCKM is not supported in this release.
- The module radio supports 50 clients in hardware.
- 8 keys for multicast traffic, one per SSID—8 keys for 8 SSIDs maximum on 11ac radio.
- 42 keys for the client unicast traffic.
- If more than 42 clients are associated, clients will be connected, but throughput for some clients will degrade because encryption/decryption is done in software.

Features not supported in the module

MFP—Management Frame Protection

CCX—Cisco Compatible Extensions (Integrated 5 GHz radio handles these requests)

IAPP (used to connect WGBs and their clients)—no WGB support.



Note

You can connect a WGB in WGBu (universal) mode, because it essentially behaves like a standard client, but no WGBC support. Also, not supported are SE-Connect, Mesh, and Monitor and Autonomous modes.

Understanding 802.11ac and the AP 3700 (Wave-1)

The AP 3700 series is a dual band AP with integrated 802.11ac Wave-1 radio freeing up the feature module for more options and flexibility. The AP 3700 contains the same industry leading architecture 4X4:3 found in the AP 3600. With additional features and functionality such as ClientLink 3.0 as well as the option to use external antennas with 802.11ac applications, the AP 3700 is indeed Cisco’s best of breed AP.

The AP 3700 runs at 800 MHz w/512 MB of RAM running a purpose built Cisco Custom Application Specific Integrated Circuit (ASIC). This custom chip incorporates Spectrum Intelligence, ClientLink 3.0 along with proprietary Cisco IP for data plane hardware acceleration.

The AP 3700 is a robust AP with full metal shielding requiring no vent holes and is water resistant. This AP is suitable for medical environments where cleaning chemicals may be used. Note that the feature module is also well shielded from the rest of the AP with areas open on the sides for the feature module antennas to properly radiate.



Note

Antennas on the AP 3700 radiate in much the same way as the AP 3600 patterns for both are in this guide and the [Cisco antenna reference guide](#).

Figure 78 A Peek Inside the AP 3700 Showing Conductive Gasket and Dual-Band Antenna Design



Power Over Ethernet and the AP 3700

The AP 3700 with integrated 802.11ac wave-1 radio is designed to run from Power over Ethernet (PoE) sources, local power, or via mid-span or power injector. If the AP 3700 is powered by PoE and the source is 802.3af (15.4 Watts) the AP will come up and fully function in a 3x3:3 mode, for enhanced performance additional power sources such as 802.3at, enhanced PoE, Cisco PoE Injector-4, or local power may be used. With additional power (greater than 15.4W) supplied, the 3700 will shift into the 4x4:3 mode.



Tip

Modes such as 4x4:3 implies 4 receivers and 4 transmitters capable of 3 spatial streams.

This enhances performance by allowing the AP to beamform to 3-ss clients (Clientlink 3.0). It also guarantees an “extra” receiver to help decode weak client signals for better uplink as well as downlink performance.

Cisco understands the need that some customers have to stay in the .3af (15.4 power budget). If the customer has lower PoE requirements and still wishes to use the AP 3700 and say the WSSI module, the AP 3700 will still function with the module but in a 2x2:2 mode with the module enabled.

Also, smaller controllers, for example the Cisco 2500 series controller, support the lower 15.4W PoE specification native and given that it is a smaller controller it should be fine. However, it is suggested that higher sources of power (either locally or PoE)) should be used when the highest throughput is required.



Note

A Cisco PWR-INJ4 PoE injector could also be used, but avoid the PWR-INJ5 because it has only 15.4 W.

In order to determine if the AP 3700 is running at high PoE power or reduced (15.4W) power, one can check the controller and easily determine this.

Figure 79 AP 3700 Running in 802.3af (15.4 Watt) Mode

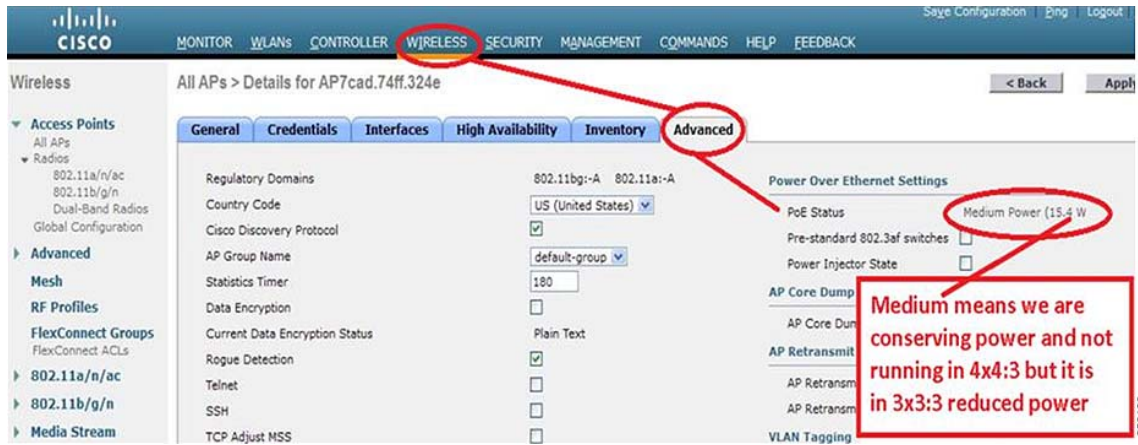


Figure 80 AP 3700 Running in Full Power Mode when it has 18 Watts or More of Available Power

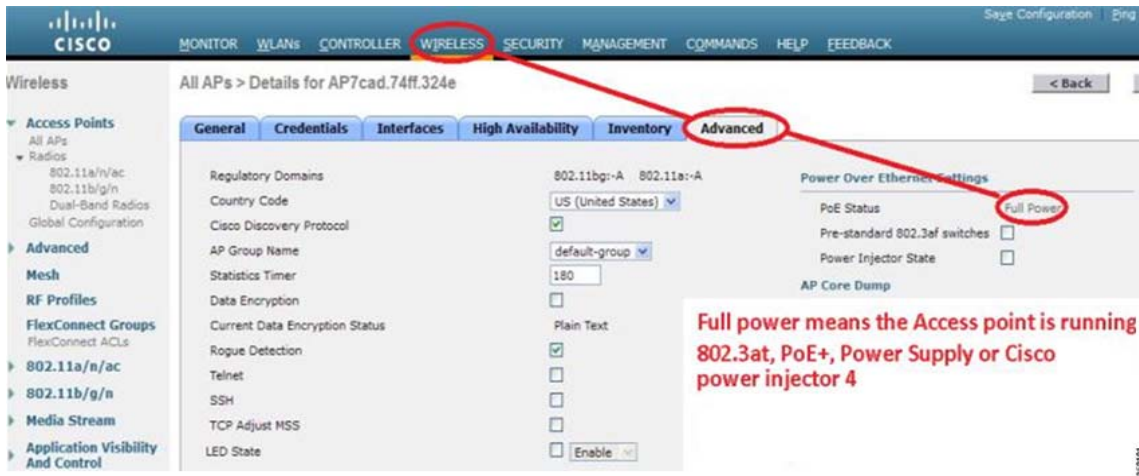


Figure 81 AP 3700 Powering Options via Cisco Access Layer Switches

3700 Series AP - Powered by Cisco Access Layer Switches				
= Sufficient Power for full 4x4 RF with the 3700 Series Access Point				
3700 - PoE ready Switches	3x3:3 RF Design per Ratio	Full - 4x4:3 RF Design per Ratio		
Cisco Switches	802.3af - PoE	Cisco Enhanced PoE	802.3at - PoE+	UPoE
4500 E Series 47xx line card	x	x	✓	x
4500 E Series all other copper line cards	x	x	✓	x
4500 non E Series	x	x	x	x
3850 24P/48P/48F models	x	x	✓	x
3750-X	x	x	✓	x
3750-E	x	✓	x	x
3750-G	x	x	x	x
3650-X	x	x	✓	x
3560-X	x	x	✓	x
3560-E	x	✓	x	x
3560-C	x	x	✓	x
2960-XR	x	x	✓	x
2960-X	x	x	✓	x
2960-S	x	x	✓	x
2960-C	x	x	x	x
2960	x	x	x	x
Power Injectors		AIR-PWR-INJ4		

362193

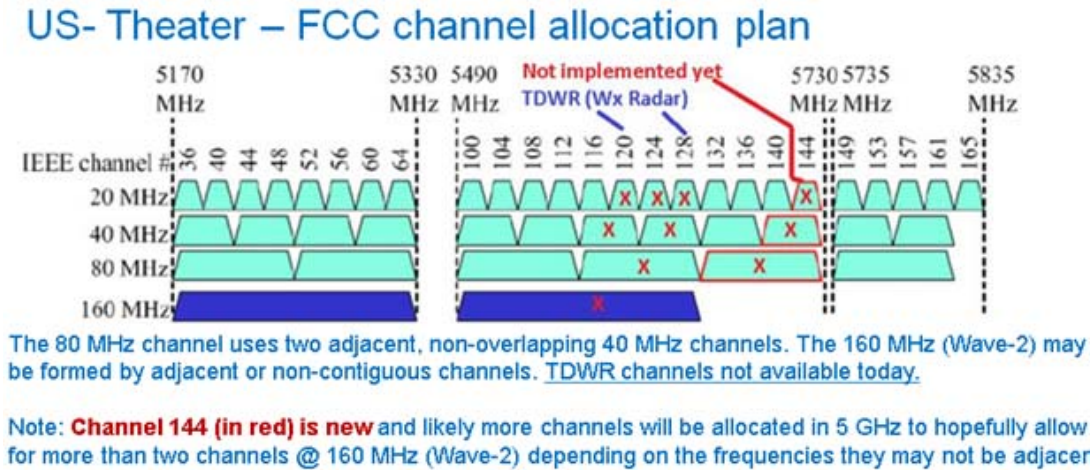
Best Practices – Understanding Channels, Clients and so on

Currently in the US, there are 22 (20 MHz) channels, 9 (40 MHz) channels, and 4 (80 MHz) channels. 802.11ac (Wave-2) supports 160 MHz channels but there is only 1 channel available today; this is likely going to get better because the Federal Communications Commission and other regulatory bodies realize the need for more unlicensed spectrum and are actively working to free up more spectrum.

Let us take a look at the frequencies available and how the channel bonding would work.

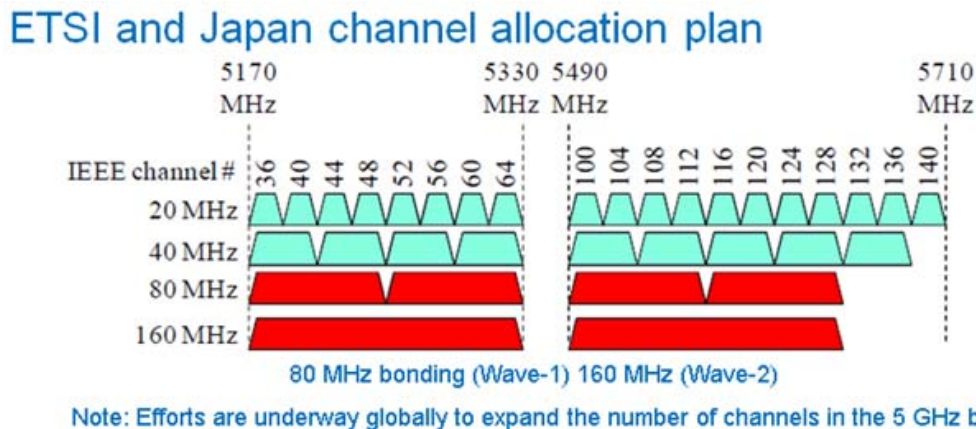
Right now in the US, there are only four 80 MHz channels but this will likely improve.

Figure 82 Current Channel Allocation Plan - US Theater



352194

Figure 83 Current Channel Allocation Plan - ETSI Theater



352195

What is in the future as far as spectrum allocation?

- In the US, there are currently 22/10/5/1 channels with bandwidth 20/40/80/160MHz channels.
- With the opening up of 5.35-5.47 GHz and 5.85-5.925 GHz, the number of channels increases to 34/16/8/3.
- If the industry manages to take back the TDWR channels, the number increases to 37/18/9/4.

So, as time progresses we should see additional channels becoming available.

Figure 84 Proposed Channel Plan for US theater (Not Fully Committed as of this Writing)



Summary

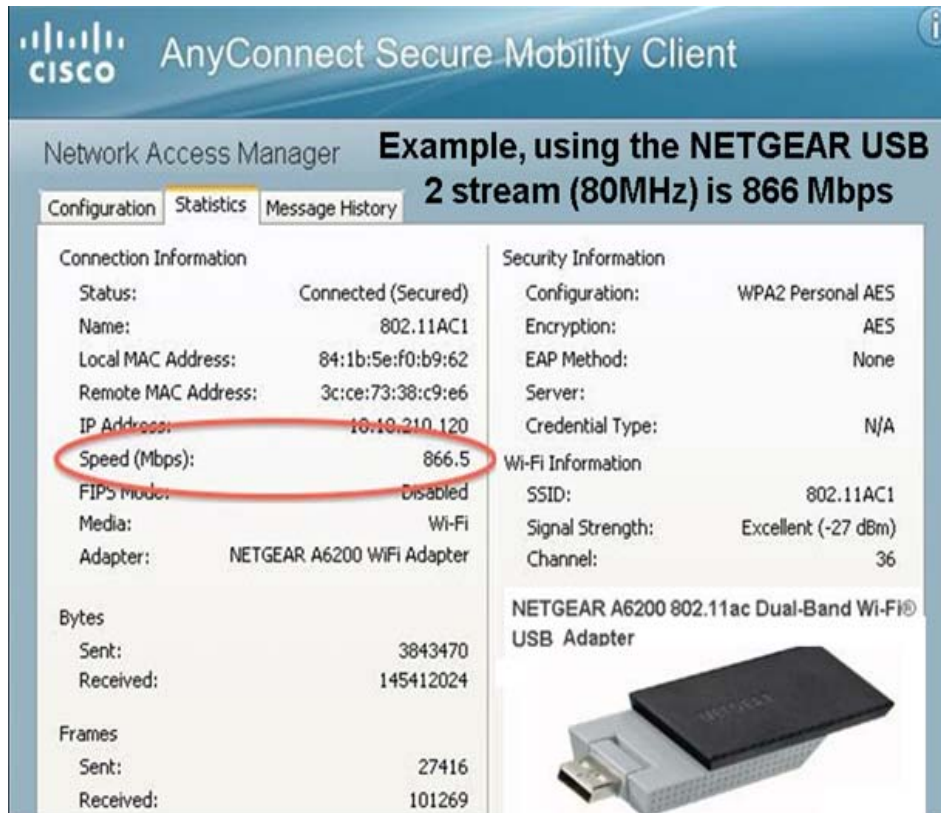
1. 802.11ac deployments and surveys are really not much different than 802.11n deployments.
2. 802.11ac supports faster 256 QAM modulation allowing 802.11ac clients the ability to use faster and a wider range of data rates permitting clients to maintain higher connectivity rates. The goal being to maintain higher connectivity rates.
3. So the real question is, do you want to deploy 80 MHz bonded channels?
4. Do you have a spectrum available for 80 MHz? Does it make sense to use 80 MHz?
5. You should understand that this can be a major change to your existing spectrum plan.

Understanding Channels and How they Relate to the Client

So, let us take a look at how these channels look from a client's perspective.

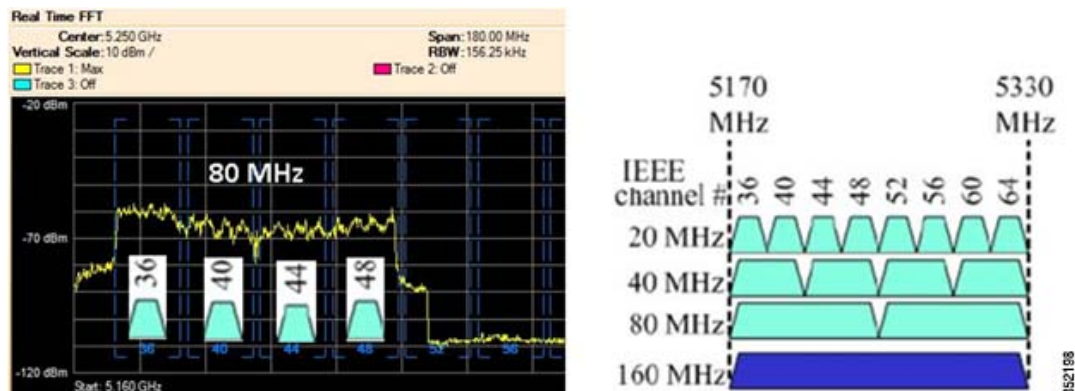
Most clients (USB) that are emerging are 2 spatial stream and by using 80 MHz bonding, you can achieve up to 866 Mbps. The following figure shows the Netgear A6200 client card.

Figure 85 Example of a 2-ss Client Bonded at 80 MHz



Notice that the software reports channel is 36 (that is where the channel bonding starts). On a spectrum analyzer, we see that the actual channels in use are 36, 40, 44, and 48.

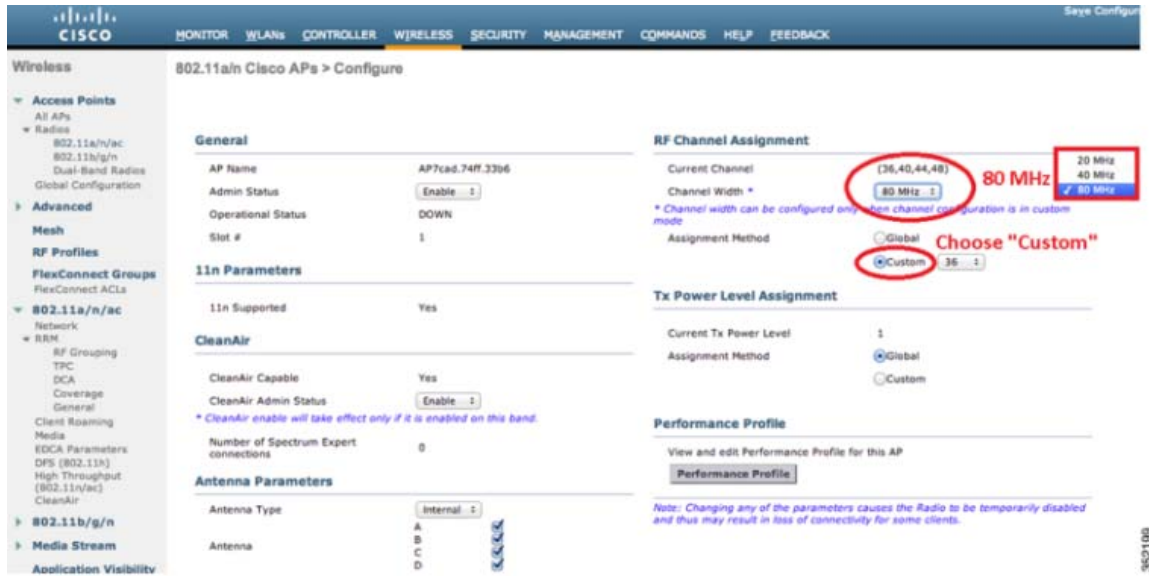
Figure 86 Example of a Bonded 80 MHz Channel



Note

For clients to link at 80 MHz, you have to set the channel width to 80 MHz on the AP.

Figure 87 Setting an AP 3700 to an 80 MHz Channel from the Controller.



802.11ac and Legacy Client Recommendations

At the time of this writing, 802.11ac clients are just now starting to get integrated into smart phones. Devices such as Samsung Galaxy S4, ZTE's Grand Memo, and HTC One and new notebooks such as the Apple 2013 Macbook Pro are some early to market 802.11ac devices. It is expected that integrated notebooks and tablets (those devices often supporting 2 and 3 spatial streams) will start to become commonplace.

Currently Cisco's test bed for interoperability (for the 7.6 release) supporting the new AP 3700 has the following configuration types.

Table 2 Interoperability Matrix for Release 7.6 Type

Hardware/Software Parameter	Hardware/Software Configurations Type
Release	7.6
Controller	Cisco 5500 Series Controller
Access Points	1131, 1142, 1242, 1252, 3500e, 3500i, 3600, 3702
Radio	802.11ac, 802.11a, 802.11g, 802.11n2, 802.11n5
Security	Open, WEP, PSK (WPA and WPA2), 802.1X (WPA-TKIP and WPA2-AES) (LEAP, PEAP, EAP-FAST, EAP-TLS)
RADIUS	ACS 4.2, ACS 5.2
Types of tests	Connectivity, traffic, and roaming between two access points

Interoperability matrix for APs, Clients and security types tested with the below clients.

Table 3 *Laptops and Clients Tested for Interoperability*

Client Type and Name	Version
Laptop	
Intel 3945/4965	11.5.1.15 or 12.4.4.5, v13.4
Intel 5100/5300/6200/6300	
Intel 1000/1030/6205	v14.3.0.6
Intel 7260(11AC)	v14.3.0.6
Broadcom 4360(11AC)	16.1.5.2
Dell 1395/1397/Broadcom 4312HMG(L)	XP/Vista: 5.60.18.8 Win7: 5.30.21.0
Dell 1501 (Broadcom BCM4313)	v5.60.48.35/v5.60.350.11
Dell 1505/1510/Broadcom 4321MCAG/4322HM	5.60.18.8
Dell 1515 (Atheros)	8.0.0.239
Dell 1520/Broadcom 43224HMS	5.60.48.18
Dell 1530/Broadcom BCM4359	v5.100.235.12
Cisco CB21	v1.3.0.532
Atheros HB92/HB97	8.0.0.320
Atheros HB95	7.7.0.358
MacBook Pro (Broadcom)	5.10.91.26
MacBook Air	OSX 10.8.5, BCM43xx 1.0 (6.30.223.154.45)

Table 4 *Hand Held Devices Tested for Interoperability*

Handheld Devices	Version
Apple iPad	iOS 5.0.1
Apple iPad2	iOS 7.0.3 (11B511)
Apple iPad3	iOS 7.0.3 (11B511)
Asus Transformer	Android 4.0.3
Sony Tablet S	Android 3.2.1
Toshiba Thrive	Android 3.2.1
Samsung Galaxy Tab	Android 3.2
Motorola Xoom	Android 3.1
Intermec CK70	Windows Mobile 6.5 / 2.01.06.0355

Table 4 *Hand Held Devices Tested for Interoperability (continued)*

Handheld Devices	Version
Intermec CN50	Windows Mobile 6.1 / 2.01.06.0333
Symbol MC5590	Windows Mobile 6.5 / 3.00.0.0.051R
Symbol MC75	Windows Mobile 6.5 / 3.00.2.0.006R

Table 5 *Phones and Printers Tested for Interoperability*

Phones and Printers	Version
Cisco 7921G	NA
Cisco 7925G	1.4.2.LOADS
Ascom i75	1.8.0
Spectralink 8030	119.081/131.030/132.030
Vocera B1000A	4.1.0.2817
Vocera B2000	4.0.0.345
Apple iPhone 4	iOS 7.0.3 (11B511)
Apple iPhone 4S	iOS 7.0.3 (11B511)
Apple iPhone 5	iOS 7.0.3 (11B511)
Apple iPhone 5S	iOS 7.0.3 (11B511)
Ascom i62	2.5.7
HTC One (11AC)	Android 4.2.2
Samsung Galaxy S4 - GT-19500 (11AC)	Android 4.3
HTC Sensation	Android 2.3.3
RIM Blackberry Pearl 9100	WLAN version 4.0
RIM Blackberry Pearl 9700	WLAN version 2.7

802.11ac Devices on the Market

- Integrated Devices – Shipping
 - Apple – Macbook Air
 - Intel® Dual Band Wireless- AC 7260
 - Samsung S4
 - HTC ONE
 - ZTE Grand Memo
- USB Clients - Shipping
 - LinkSys AE6000 1x1

Asus – USB-AC53 2x2

NetGear – A6200 2x2

Belkin P-F9L1106 - 2x2

D-Link DWA-182 – 2x2

Buffalo ac866 – 2x2

Edimax EW-7822AC– 2x2

- Ethernet to 802.11ac Bridges - Shipping

LinkSys (Belkin) WUMC710

Buffalo WLI-H4-D1300

- List for identifying new 802.11ac hardware:

http://wikidevi.com/wiki/List_of_802.11ac_Hardware

Variables that Could Impact Performance

Some early observations, USB clients can appear to be a bit slow (performance) depending on drivers, USB port versions, and so on. We have also seen some clients that have trouble maintaining an 80 MHz bandwidth in the DFS (Dynamic Frequency Selection) bands. Here is a list of clients that we have had reasonable luck with during our testing.

Table 6 List of 802.11ac Clients and Driver Versions

	Spatial Streams	Interface	DFS	Driver
Samsung Galaxy S4	1ss	Integrated	Yes	4.1.2
HTC One	1ss	Integrated	Yes	4.1.2
Linksys AE6000	1ss	USB 2.0	Yes	5.0.7.0
MacBook Air	2ss	Integrated	Yes	10.8.4
Intel 7260	2ss	Mini PCIe	Yes	16.1.5
Edimax EW-7822UAC	2ss	USB 3.0	Yes	1024.2.618.2103
Linksys WUMC710	3ss	Bridge	No	1.00
MacBook Pro	3ss	Integrated	Yes	10.9

Wi-Fi is a highly variable technology and there are many factors that could impact performance. Some examples are; the environment, the client, channel, AP placement, and client distance from the AP.

Is the spectrum clean?

If you are not seeing the results you expect, the first thing you will want to check is coexistence with other Wi-Fi networks. You need to ensure the entire 80 MHz wide channel or whatever you have bonded together is clear. The easiest way to confirm this is to put your 3600/3700 into SE Connect mode and have a look on Spectrum Expert or Metageek Chanalyzer Pro. This will allow you to see Wi-Fi and non-Wi-Fi interference on all channels.

What client are you using?

The client will have a big impact on performance. First, is the client 1, 2, or 3 spatial stream? Second, what is the interface? A USB 3.0 client will perform much better than a USB 2.0 client. Integrated radios are the best of all because they are able to take advantage of a fast bus speed as well as the built-in antennas of the device. For this reason, we recommend devices such as the Samsung Galaxy s4 (1x1) or the Apple MacBook Air (2x2) over USB clients. We certainly recommend USB 3.0 products over USB 2.0 products.

What channel are you using?

If you will be doing a Rate versus Range demo, it is important to choose your channel carefully. Obviously you need to ensure that the channel is clear, but beyond that, not all channels are created equal. Some channels have total output power restrictions. It is for that reason we recommend UNII-3 or UNII-2, over UNII-1 when the goal is to show best performance.

How far is the client from the access point?

The next thing to consider is distance. How far is the client from the AP? 802.11ac introduces 256 QAM, and it is a more complex modulation so that modulation is harder to maintain over distance. If you want to consistently show 256 QAM, which equates to m8 and m9, we recommend keeping the client within 25'. Beyond 25', you will still see m8/m9, but not consistently.

Keep in mind, m7 is the same for 11n and 11ac. The difference being, 11ac allows for 80 MHz channels. Under ideal conditions you should expect 11ac to have an almost 3x gain over 11n at m9 and a 2x gain at m7. The AP 3700 also does a better job of linking at 11ac rates further out than the AP 3600 module.

How is the AP mounted?

AP placement needs to be considered. For close-in tests, less than 10', placement is not so important, just make sure that the AP is not obstructed. For other tests, you should take care to mount the AP in a proper location (ceiling or high on a wall in the right orientation).

Try to follow these best practices: avoid mounting the AP near metal, mount it horizontally on a ceiling, and so on.

What data rate is the AP transmitting to the client at?

It is often useful to monitor the data rate of the client. The data rate has a direct impact on performance. There are several ways to monitor the data rate.

The easiest method is to check on the GUI.

A Quick Look at a Few “Non-Optimal” Installations

The figures below present examples of installations that are not recommended. It is very difficult to provide good Wi-Fi service with a poor installation. Always try to avoid metal and clutter.

Figure 88 Example of an AP Installation Near Metal and Clutter (Try to Avoid Metal and Clutter)

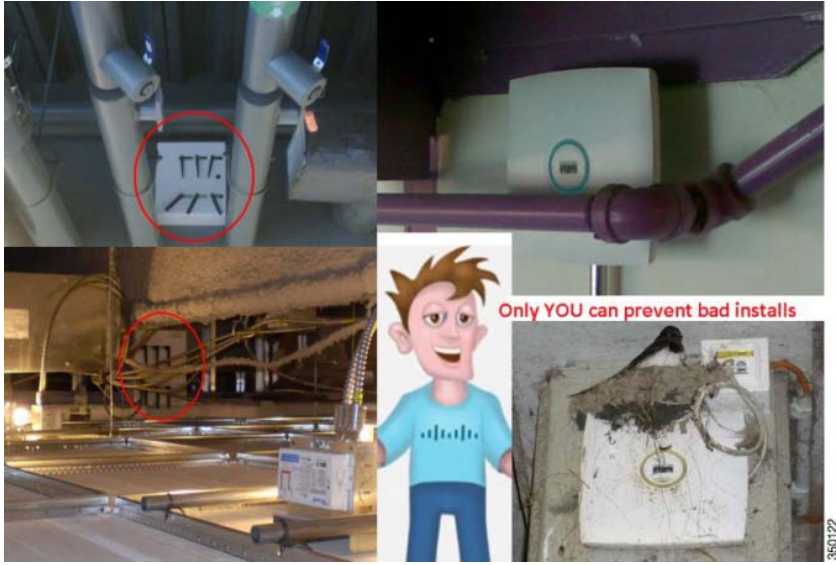


Figure 89 Patch Antenna Against a Metal Fence



Figure 90 Example of an AP Installation Near Metal and Clutter (Again, Try to Avoid Metal and Clutter)



Figure 91 Example of a Poor Installation - Access Point Needs to be Level and Not Swing or Move About

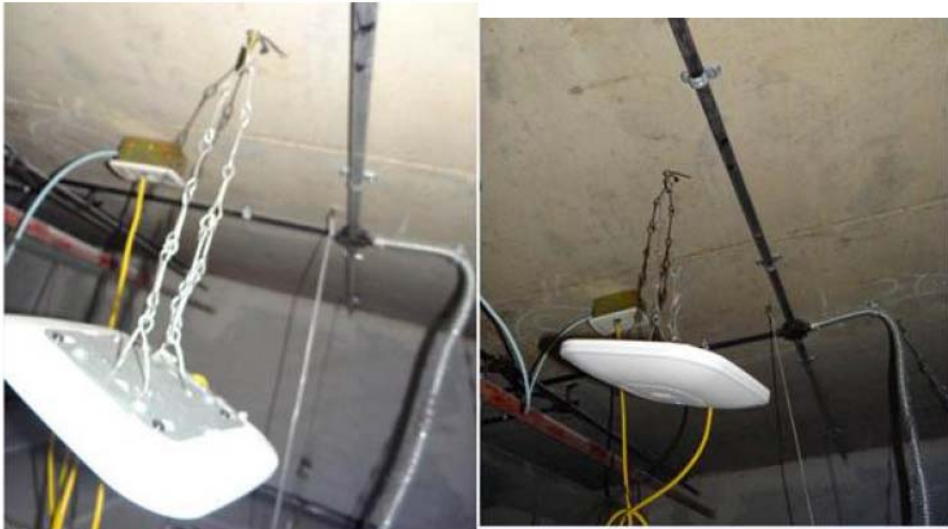
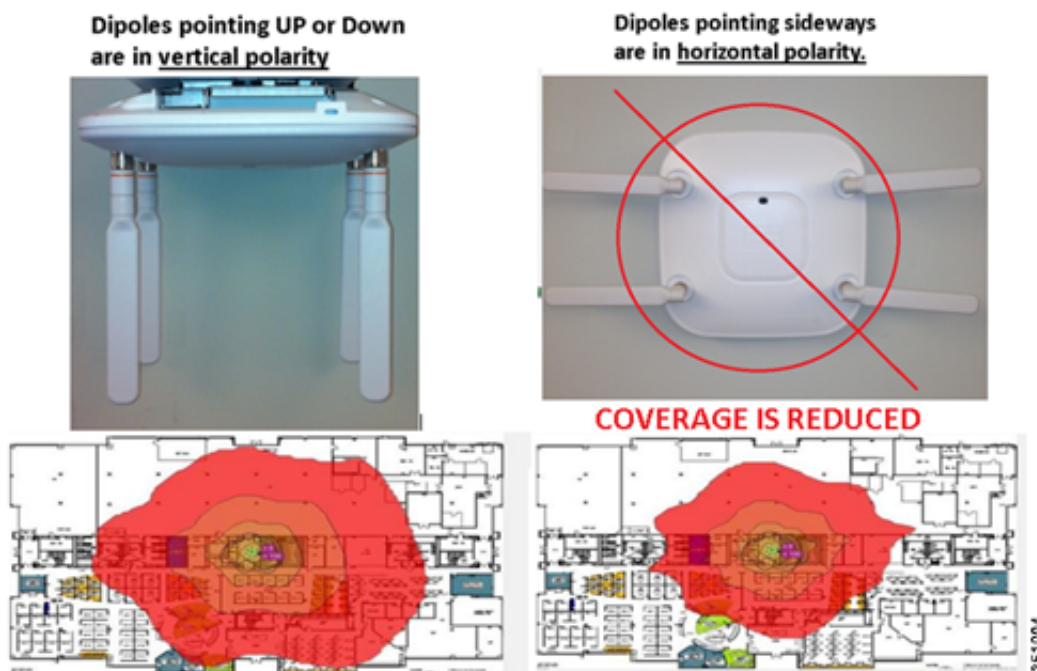


Figure 92 Example of a Poor Installation – Access Point is too High and Buried in Conductive Foil



Remember, the best place for an AP is as close to the users as possible. Avoid metal or conductive objects in the near field (they cause the radio waves to become directional and increases nulls (dead spots)). If you must mount the AP in a high ceiling, look at directional antennas to direct (angle down) the signal to the intended target area and always mount dipoles in the correct orientation.

Figure 93 When Using Dipole Antennas Observe the Correct Orientation (Vertical Polarity)





Tip

When mounting antennas outdoors, always mount with the WIRES DOWN and never obstruct or put weather proofing material over the drain holes.

Figure 94 Always Mount Antennas Outdoors with Leads DOWN (Indoors Does not Matter)

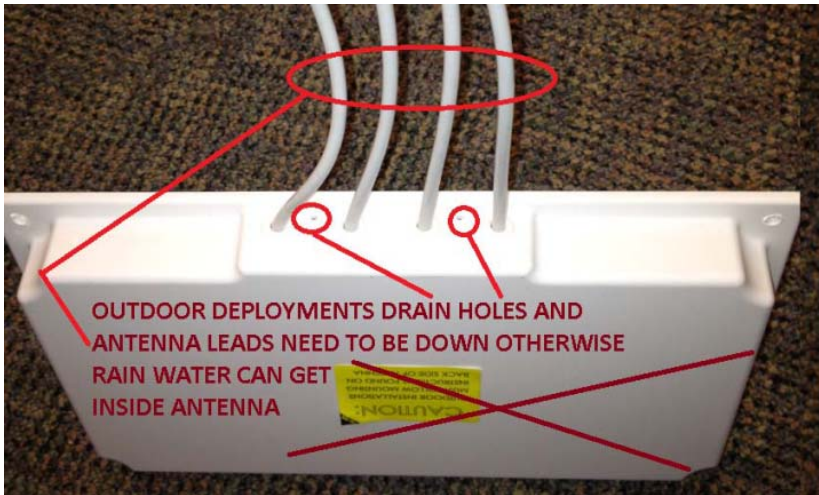


Figure 95 If Antenna Connectors are Exposed to Weather – Coax-Seal Should be Used but if Present, Do Not Cover Antenna Drain Holes.



Seals connections from moisture & corrosion

A must for Wi-Fi – satellite dishes – microwave work – radar and HAM radio • Forms and seals around odd-shaped and difficult fittings • Stays flexible for years • Adheres to polyvinyl and vinyl outer coax jackets • Allows for quick disconnection of fittings • Effective at temperatures from -30° to +180°F (-35° to +82°C)

UNIVERSAL ELECTRONICS, INC.

Phone: 828-293-2222
Email: sales@CoaxSeal.com
P.O. Box 2648, Cullowhee, NC 28723



To apply - diagonally wrap a strip of Coax-Seal over a clean, dry connection making sure to overlap as you apply. Mold to form a smooth surface and to force out air.

**EFFECTIVE
LONG LASTING
INEXPENSIVE**

For larger quantities visit us at: www.CoaxSeal.com

350127

Cisco Aironet Series 2700 Access Point



Cisco Aironet series 2700 AP is a 802.11ac Wave-1 and 3x4:3 MIMO AP. It supports the following features:

- An additional non-PoE GigE port for downward device connectivity
- ClientLink 3.0 Beam-forming
- Existing hardware mounting options and bracket choices
- Existing external antennas (similar to AP 3700)
- 802.3af (15.4W PoE) scaling to 3x3:3 @ 5 GHz and 2x2:2 @ 2.4 GHz
- High Density Experience (HDX)
- Optimized Roaming and Videostream applications
- CleanAir Spectrum analysis including @ 80 MHz

Unlike the 3700 series AP, 2700 series AP does not have module support.

Figure 96 Updated AP Lineup Listing AP 2700

Cisco Aironet Indoor Access Point
Industry's Best 802.11n and 802.11ac Series

Value-Based	Enterprise	Mission Critical	Best In Class
Mission Specific 600 & 700 - Up to 600 Mbps - 702w: Wall Plate AP - Dorms, hospitality - 702i: Compact Mid-market AP - 600: Teleworker	Enterprise Class 1600 - Up to 600 Mbps - CleanAir Express* - ClientLink 2.0 - VideoStream	Mission Critical 2700 - Over 1 Gbps, 802.11ac - HDX: High Density Experience - CleanAir 80 MHz, ClientLink 3.0 - Optimized Roaming - VideoStream	Best in Class 3700 - Over 1 Gbps, 802.11ac - HDX: High Density Experience - CleanAir 80 MHz, ClientLink 3.0 - VideoStream - StadiumVision - Future proof modularity: Security, 3G Small Cell or Wave 2 802.11ac

Identifying Cisco Access Points

Figure 97 AP 2700 shares the same physical size and mounting as these Access Points



All the standard modes are supported:

- Local mode
- Flex Mode
- OEAP Mode
- Monitor Mode
- Enhanced Local Mode (with wIPS)
- SE Connect Mode
- Indoor Mesh Mode
- Support for wIDS/wIPS solutions on the 11ac radio
- BandSelect, VideoStream, QoS in hardware, and DTLS

Figure 98 AP 2700 supports all standard modes of operation

All APs > Details for APa80c.0dd2.25a8

General | Credentials | Interfaces | High Availability | Inventory | Advanced

General

AP Name: APa80c.0dd2.25a8
 Location: default location
 AP MAC Address: a8:0c:0d:d2:25:a8
 Base Radio MAC: a8:0c:0d:db:df:70
 Admin Status: Enable
 AP Mode: local
 AP Sub Mode: local
 Operational Status: monitor
 Port Number: Sniffer
 Venue Group: SE-Connect
 Venue Type: Unspecified
 Venue Name:
 Language:
 Network Spectrum: CFD728E183EB20708941BC33AF89425B
 Interface Key:
 Network Spectrum Interface Key: CFD728E183EB20708941BC33AF89425B

Versions

Primary Software Version: 7.6.110.5
 Backup Software Version: 0.0.0.0
 Predownload Status: None
 Predownload Version: None
 Predownload Next Retry Time: NA
 Predownload Retry Count: NA
 Boot Version: 15.2.2.4
 IOS Version: 15.2(20140325:004246)\$
 Mini IOS Version: 0.0.0.0

IP Config

IP Address: 172.31.255.181
 Static IP:

Time Statistics

UP Time: 0 d, 00 h 04 m 15 s

352714

Auxiliary Ethernet Port (New Feature)

AP 2700 has an additional Ethernet port labeled “AUX” for Auxiliary port used for downstream traffic.

The Ethernet uplink port to the controller on the AP 3700 is labeled Ethernet, on the AP 2700 it is shortened to PoE.

This AUX port is designed to function as a downstream port. The AUX port is ideal for devices such as video cameras, projectors, IP Phones, Point of Sale terminals, and other end point devices. It is not designed to perform port aggregation nor will it provide PoE out.

Additionally, this AUX port will be disabled if the AP is being powered by a limited 15.4 W .3af PoE source because it requires PoE+, .3at, or local power (wall brick type power supply) to properly function.



Note

In release 7.6 MR2/8.0, this port is not manageable and is simply bridged back to the controller. Avoid connecting another AP to this port or devices such as switches/hubs or the same switch or uplink as the PoE port because it can create spanning tree loop issues.

For example, if you configure the switch port (to AP 2700) as access in VLAN 5, then the traffic comes from the AUX port. If you configure the switch port to trunk, the AP 2700 will be in the native VLAN and the AUX will also be in native by default. Traffic from the AUX port will not be sent to the WLC, and the AP 2700's **built-in** switch will drop the traffic in the native VLAN.

Figure 99 Ethernet Uplink Port to Controller is Labeled PoE and Auxiliary Port is Labeled AUX



Table 7 2700 Power Requirements

	Description	AP Functionality	PoE Budget ^a (Watts)	802.3af	E-PoE	802.3at PoE+ PWRINJ4
PoE+802.3at	2700 – Out of the Box	4x4:3 on 5G & 3x4:3 on 2.4G Auxiliary Ethernet Port enabled	16.1	Not Available	Available	Available
PoE+802.3af	2700 – Out of the Box (7.6 code)	Auxiliary Ethernet Port disabled 2x2:2 on 5G & 2x2:2 on 2.4G	15.4	Available	NA	NA
	2700 – Out of the Box (8.0.x.x code)	Auxiliary Ethernet Port disabled 3x3:3 on 5G & 3x3:3 on 2.4G	15.4	Available	NA	NA
	2700 – Out of the Box (8.0MR or 8.1)	Auxiliary Ethernet Port enabled 3x3:3 on 5G & 3x3:3 on 2.4G	15.4	Available	NA	NA

a. This is the power required at the PSE, which is a switch or injector.



Note

The auxiliary port is not manageable in software. So, if you do not want the auxiliary port enabled, you need to limit PoE to 15.4 W. This will be fixed in the next release 8.0MR or 8.1.

Figure 100 AUX port is active when PoE status is at FULL power or when a local power supply is used



Mounting Options

Cisco Bracket-1, Bracket-2, or the flush mount Bracket-3 may be used.

Figure 101 All mounting brackets are Orderable Options and Fully Supported

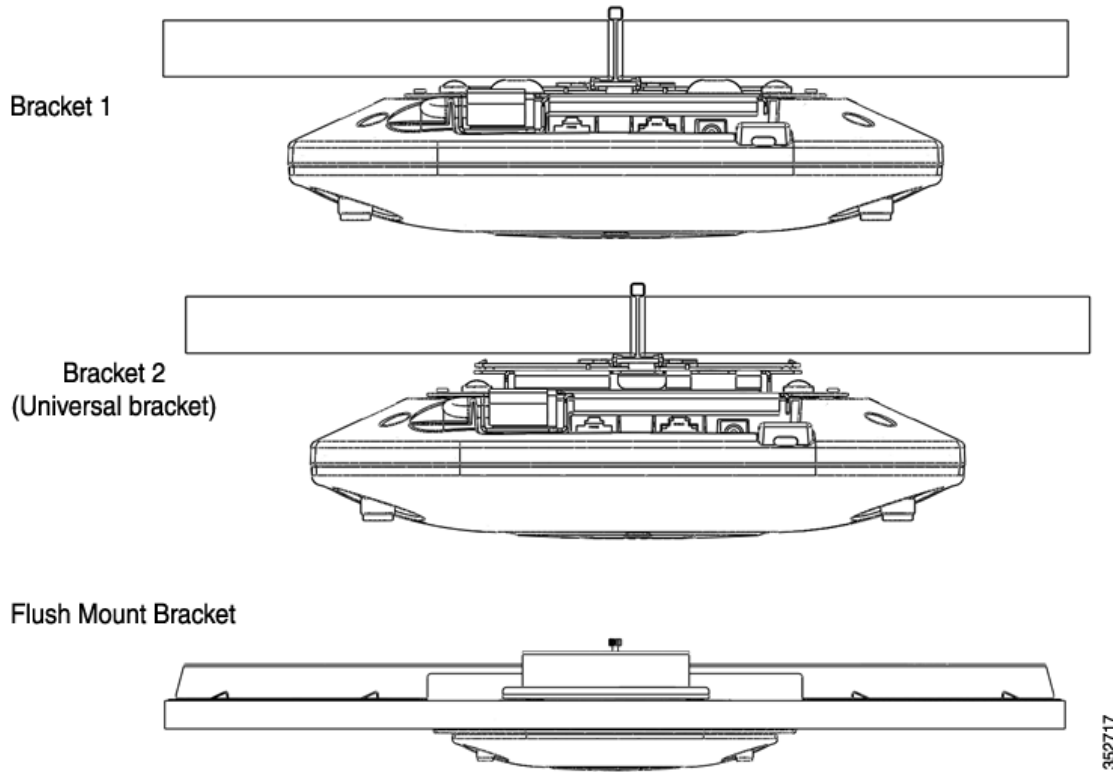
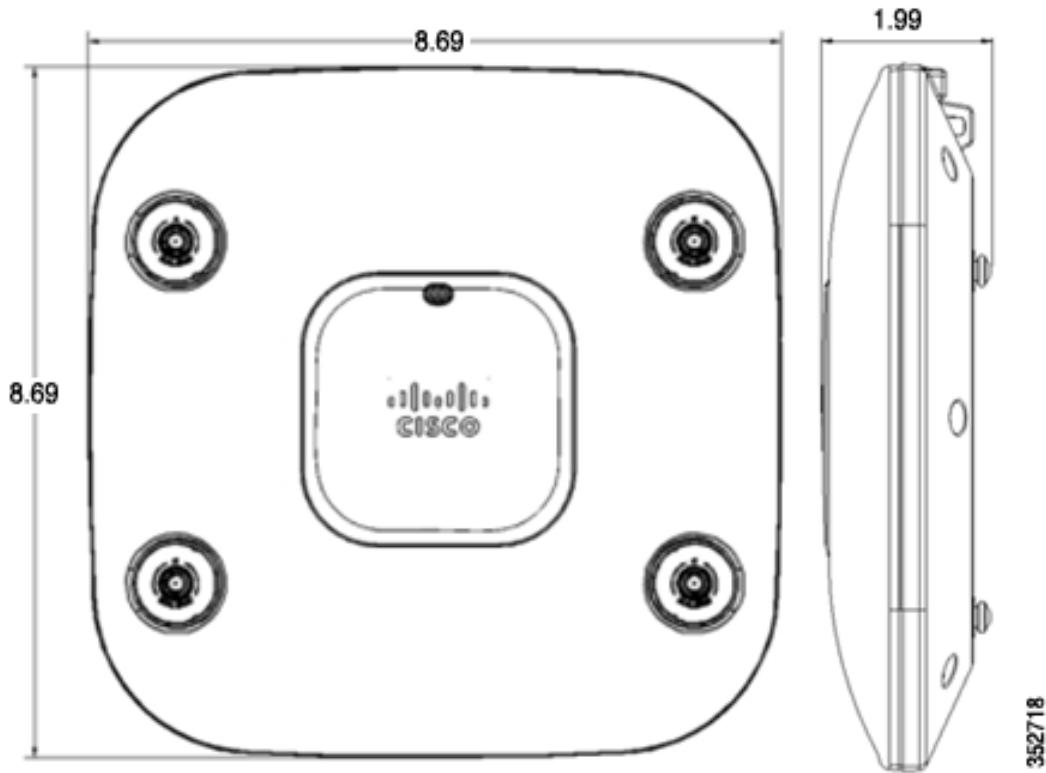


Figure 102 Internal and external model has the same physical dimensions (scale is in inches)



Supported Antennas (AP 2700e Model)

Table 8 Supported antennas for AP 2700

Frequency	Part Number	Antenna Type	Antenna Gain (dBi)
2.4 / 5 GHz	AIR-ANT2524DB-R	Dual-resonant black dipole	2 / 4
	AIR-ANT2524DW-R	Dual-resonant white dipole	2 / 4
	AIR-ANT2524DG-R	Dual-resonant gray dipole	2 / 4
	AIR-ANT2524V4C-R	Dual-resonant ceiling mount omni (4-pack)	2 / 4
	AIR-ANT2535SDW-R	Dual-resonant “stubby” monopole	3 / 5
	Internal	Omni-Directional	4 / 4
	AIR-ANT2544V4M-R	Dual-resonant omni (4-pack)	4 / 4
	AIR-ANT2566P4W-R	Dual-resonant “directional” antenna (4-pack)	6 / 6

Antenna Patterns – AP 1700i, 2600i, 2700i, & 3700i

Figure 103 Patterns Azimuth and Elevation Plane @ 2.4 GHz

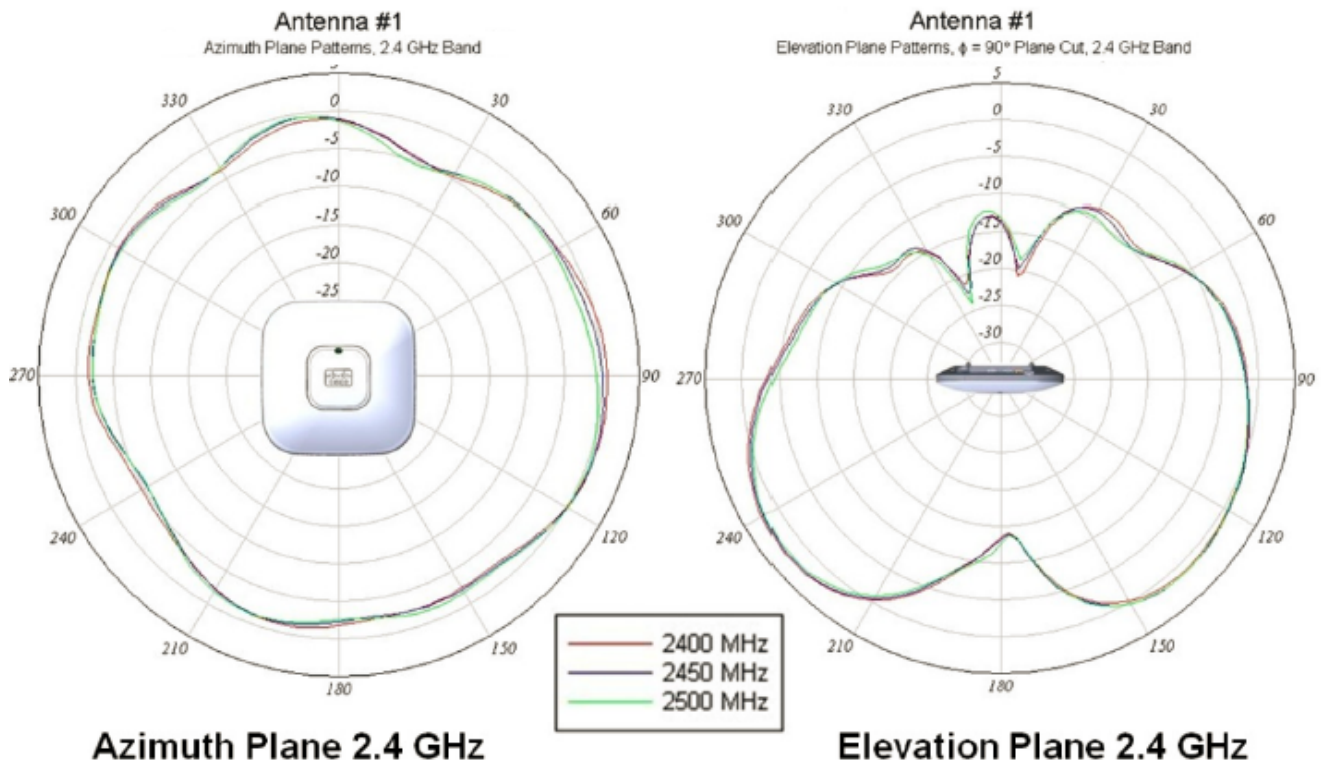
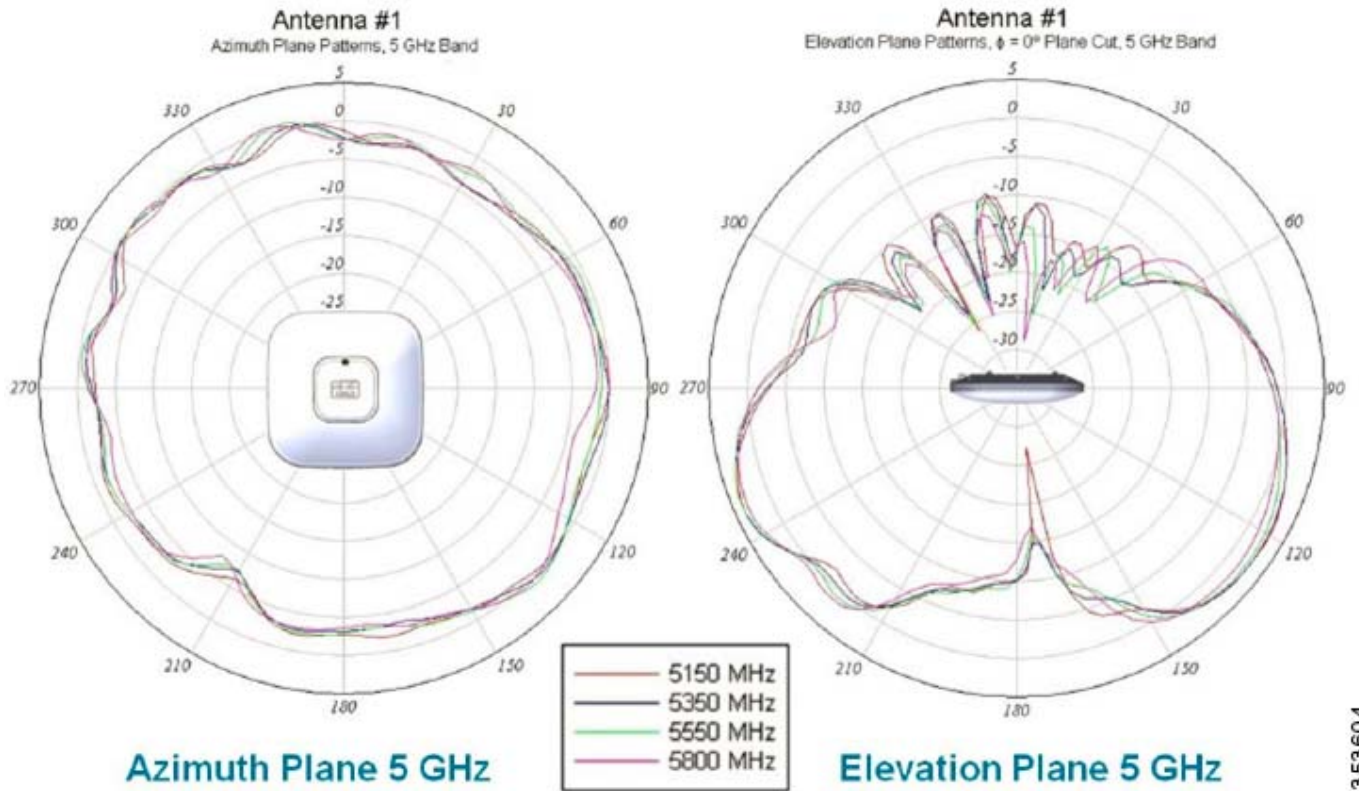


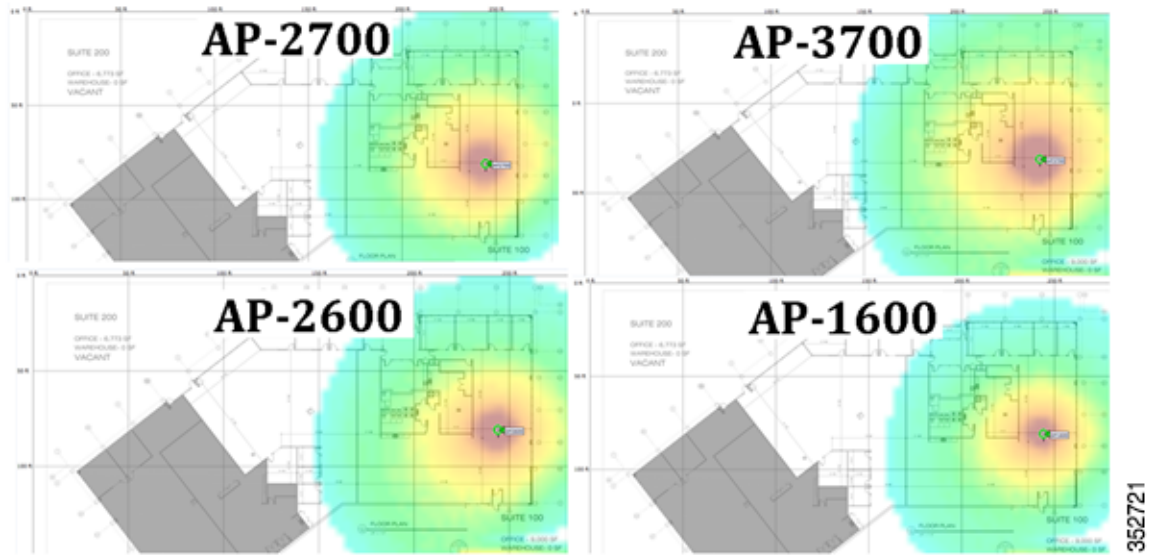
Figure 104 Patterns Azimuth and Elevation Plane @ 5 GHz



3 53604

Figure 105 Heat maps are similar between AP 2700 and AP 3700 because antennas are similar

Cisco Aironet 2700 - Heat Maps



Cisco Aironet Series 1700 Access Point

Figure 106 Cisco Aironet Series 1700 Access Point



Cisco Aironet Series 1700 AP is an 802.11ac Wave-1 and 3x3:2 MIMO AP. It supports the following features and caveats:

- No need to specify Unified or Autonomous image (both present on the AP)
- An additional non-PoE GigE port for downward device connectivity
- Standards based Beamforming (does not support ClientLink 3.0)
- Existing hardware mounting options and bracket choices
- 802.3af (15.4 W PoE)
- CleanAir Express (light version of CleanAir)
- CleanAir Spectrum analysis including @ 80 MHz
- HDX and external antenna options are not supported on the 1700 series

Figure 107 Cisco Aironet 1700 Series is slightly darker than the 2700 Series



Differences Between the AP 1700 and AP 2700

Table 9 Feature Differences between the AP 1700 and AP 2700

	AP 1700	AP 2700
Access Point	802.11ac 3x3:2SS	802.11ac 3x4:3SS
RF Leadership	RRM Transmit Beamforming (TxBF) BandSelect VideoStream	RRM ClientLink 3.0 (1SS, 2SS, 3SS) BandSelect VideoStream
Performance	<610 Mbps MAC throughput @ 70% Efficiency @ (2-SS) supported rates No HDX	>910 Mbps MAC throughput @ 70% Efficiency @ (3-SS) supported rates
Spectrum Intelligence	CleanAir Express: Classify, detect RF interference, and mitigate with limited number of IDRs	CleanAir: Classify, detect, locate, and mitigate RF interference Correlation of interferers Zone of Impact No limitations on number of IDRs
Antenna Configuration	Internal Only	Internal / External

Changing the Operation of the Access Point to Autonomous Mode

Both unified and autonomous images are installed in the AP 1700 similar to the AP 1530.

To change the operation of the access point from unified mode to autonomous (stand-alone) mode, perform the following steps:

Step 1 Power the AP and connect a console cable.

Step 2 From the Command Line, enter the following command in privileged EXEC mode (#):

```
AP # capwap ap autonomous
```

The system responds with “Convert to Autonomous image. Proceed?”

Step 3 Type **Yes** to confirm.

The Unit re-boots and loads the Autonomous (aIOS) image.

Once the autonomous image is loaded, the unified image is erased.

Differences between CleanAir and CleanAir Express

CleanAir Express is available today and requires controller code 8.0 or higher. CleanAir Express is a fully functional version of Cisco Systems CleanAir.

The main difference with CleanAir Express is the 1600/1700 series access point (AP), referred to as the (1K series), has less dedicated memory for local CleanAir operations. So, the 1600/1700 series AP needs to off-load portions of the Spectrum Intelligence (SI) functions on the 1K series to host memory.

The Cisco 2K and 3K series has more memory and processes the SI functions locally.

The AP 1600/1700 contains the Cisco custom silicon “CleanAir hardware chip” and therefore can recognize all the interferers that the 2K and 3K series AP can recognize.

The core differences with CleanAir Express are the limitations of core memory and processing power of AP 1600. This makes the AP 1600/1700 to only track three devices per radio interface. The 2K and 3K series can track ten devices per radio.

Also, when scanning in monitor mode, 2K and 3K series APs can scan processing spectrum in 40 MHz segments. Therefore, these APs can spend less time, in the scan cycle, looking for interferers (11.4%). But, AP 1600/1700 (1K series) must process the spectrum looking at a smaller 20 MHz segment at a time. Therefore, the scan cycle for 1K series APs is a bit longer (22.8%).

Thus, the longer scan cycle extends the detection time for other monitor functions such as (wIPS, rogues, and so on.)

Table 10 Feature List for CleanAir Express

	CleanAir Express	CleanAir	CleanAir with WSSI
Access Point	1600/1700	2600/3600/2700/3700	3600/3700
RF Interference Detection	Available	Available	Available
RF Interference Classification	Available	Available	Available
RF Interference Mitigation	Available	Available	Available
RF Interference Location	Available	Available	Available
Zone of Impact	Not Available	Available	Available

Table 10 Feature List for CleanAir Express (continued)

	CleanAir Express	CleanAir	CleanAir with WSSI
Alert Correlation	Not Available	Available	Available
Air Quality Index	Not Available	Available	Available
Top Severity List	Not Available	Available	Available
Performance Optimized	Not Available	Available	Available
Off Channel Scanning	Not Available	Not Available	Available
Proactive Intelligent Channel Switching with RRM	Not Available	Not Available	Available

Power over Ethernet requirements for AP 1700

The AP 1700 only requires 802.3af (15.4 W) for full functionality. The 802.3at or PoE+ sources will also power the access point (AP) as they are backward compatible to the lower power 802.3af standard.

Table 11 PoE requirements for AP-1700

	Description	AP Functionality	PoE Budget (Watts)	802.3af or PWRINJ5	E-PoE	802.3at PoE+ PWRINJ5
PoE 802.3af	1700 – Out of the Box (8.0.x.x)	3x3:2 (both bands) Auxiliary port enabled	15.4	Available	Available	Available

The AIR-PWRINJ5 is the ideal power injector for the AP1700. The AIR-PWRINJ4 and local power supply AIR-PWR-B= may also be used.

Misc. Q & A

- Q.** Which AP is the best for manufacturing and warehouse areas?
- A.** Generally speaking, the AP 3600e or 2600e are first choices because these external antenna models have the highest operating temperature range -20 to 55 C°. The AP 1600, 2700, and 3700 can also be used but has a slightly lower operating temperature range -20 to 50 C°. If temperature is not a concern then the internal antenna “I” series 1600, 2600, and 3600 may be used.
- Q.** What if I am in a country where the regulatory agency may not approve the AP to be used outdoors because of UNII-1 band restrictions? or if I wish to use higher gain antennas?
- A.** Consider deploying the Cisco Mesh products (1550 and 1530 series) or look for Access Points ending in “P” for professional install, such as the 3702P series or our outdoor bridging products.
- Q.** Which AP is best for high density deployments?
- A.** Both the 3700 and 3600 have virtually identical AP density for coverage based design as well as Capacity-based designed (smaller-cells).

- Q.** Cisco has a newer Power Injector (AIR-PWR-INJ5). How is this different from the (AIR-PWR-INJ4)?
- A.** The newer AIR-PWR-INJ5 is a low cost injector for use with the AP 1600 and AP 2600 Series Products. It is an 802.3af (15.4W injector). The AIR-PWR-INJ4 is a more powerful injector designed to work with the AP 3700 and AP 3600 (when optional modules are used). The AIR-PWR-INJ5 can be used with the AP 3600 but not if the optional module is used.
- Q.** Can industrial wireless motion or smoke detectors cause WLAN interference?
- A.** Yes, some products such as United Technologies DD475 and Optex MX-50 operate in the 2.4 GHz band as do other wireless “chimes”, cameras, and other industrial equipment from other manufacturers.
- Q.** How much power in Watts does the AP 3600 draw when an option module is used?
- A.** 18 Watts – AP 3600 draws slightly more than 802.3af (15.4W) with the module installed. Powering options include 802.3at PoE+, local Power Supply AIR-PWR-B, or injector AIR-PWR-INJ4. If performing Surveys or 2.4 GHz support is not needed, that radio may be disabled allowing the module to have full power and functionality using 802.3af (15.4 Watts).
- Q.** What is the Ethernet requirement for 802.11ac (Wave-1)?
- A.** A single GbE cable is fine for Wave-1. While it is true 802.11ac (Wave-2) will exceed GbE speeds, there is no need or requirement for cabling greater than GbE for 802.11ac Wave-1. Installers wishing to future proof new installations should consider pulling CAT-6a cables <at least 1> and either another CAT6a or a CAT5e cable (this allows you to fall back to 2 GbE ports) for some iterations of Wave-2 and/or support 10GbE should this emerge as the method. 10GbE has some challenges such as PoE standardization. Again, for the foreseeable future, a single GbE is all that is needed.
- Q.** Is it true that 802.11ac is coming in “waves” and that new hardware is required for each “wave”?
- A.** The first iteration of 802.11ac (Wave-1) is available today, and both Wave-1 and Wave-2 requires new hardware to take advantage of the new features in each “wave” or iteration. Fortunately, with a modular AP approach such as the AP 3600, upgrading to Wave-1 today is easy.
- Q.** With the 802.11ac Module installed in the AP3600, will all 3 radios be active?
- A.** Yes. All 3 radios will be active

The 2.4 GHz radio continues to support legacy b/g clients as well as n clients. The two 5 GHz radios (integrated + module) will work in tandem so they are not competing with each other but working in concert to support the same channels. For instance:

- The 802.11ac module adopts an 80 MHz wide channel on 100-104-108-112.
- The 802.11a/n integrated radio operates on Channels 100-104 and a 40 MHz wide channel for 802.11n clients, and 802.11a clients communicate with the integrated radio via Channel 100 and a 20 MHz wide channel.

The AP 3600 with the new 802.11ac module installed, will provide concurrent support for both the 2.4 and 5 GHz bands and support for 802.11 a, b, g, n, and new 802.11ac clients.

**Note**

On the 5 GHz side, it is possible to have a 20 MHz wide 11ac channel and a 40 MHz wide 11n channel, the only requirement is that the primary channel should be the same for both slots and is determined by the primary channel setting on the integrated 11n radio.

- Q.** Can both 5 GHz radios (integrated and 802.11ac module) be on different channels?
- A.** No. The two 5 GHz radios will work together on the same channels, which does not allow the 5 GHz radios to compete with each other and allows us to maximize the number of clients supported per radio. The primary (integrated .11n) radio will take the lead with the module radio “extending” or bonding from the primary channel set on the integrated radio.
- Q.** Any other thoughts when installing wireless APs?

A. When installing wireless APs:

- It is all about placing the APs as reasonably close to the actual users as possible.
- Make sure that you have coverage (to a known requirement) and compensate for nulls or dead spots regardless of what product you choose to deploy. This is called a site survey.
- Installations should be done based on lessons learned from the site survey – the better the survey the less likely any connectivity problems will occur.
- Cisco has an advanced services team that can perform WLAN surveys or help with the wireless design if a partner is not available or able to do the same.
- When possible, use Cisco brand antennas listed in this document (with the orange band).
- Do not mount antennas against metal objects. Similar to a light bulb, antennas work best when there are no obstructions in the path.
- AP 1600, 2600, and 3600 are not weatherproof and have an IP rating of 40.

URL Links and Other Resources

AP 3700 Datasheet

http://www.cisco.com/en/US/prod/collateral/wireless/ps5678/ps13367/data_sheet_c78-729421.html

AP and Controller Datasheets

<http://www.cisco.com/en/US/products/hw/wireless/index.html>

Cisco Antenna Reference Guide

www.cisco.com/go/antenna-ref

Why Buy Cisco Brand Antennas

http://www.cisco.com/en/US/prod/collateral/wireless/ps5678/ps10981/white_paper_c11-671769.pdf

Understanding Antenna Patterns and their Meaning

http://www.cisco.com/en/US/prod/collateral/wireless/ps7183/ps469/prod_white_paper0900aecd806a1a3e.html

Cisco Guest Access Deployment Guide

http://www.cisco.com/en/US/docs/wireless/technology/guest_access/technical/reference/4.1/GAccess_41.html

Cisco Schools WLAN Deployment Guide

http://www.cisco.com/en/US/docs/solutions/Verticals/Education/SRA_Schools/schoolSRA_wlan_sba.pdf

The Apple Bonjour/Apple TV Deployment Guide

http://www.cisco.com/en/US/partner/products/hw/wireless/ps4570/products_tech_note09186a0080bb1d7c.shtml

Optimizing Enterprise Video Over Wireless LAN

http://www.cisco.com/en/US/prod/collateral/wireless/ps6302/ps8322/ps10315/ps10325/white_paper_c11-577721.html

Cisco 7925 IP Phone Deployment Guide

http://www.cisco.com/en/US/docs/voice_ip_comm/cuipph/7925g/7_0/english/deployment/guide/7925dply.pdf

Cisco Mobility Services Engine – WLAN Location Deployment Guide

http://www.cisco.com/en/US/products/ps9742/products_tech_note09186a00809d1529.shtml

WLAN Design Guide for High Density Client Environments in Higher Education

http://www.cisco.com/en/US/prod/collateral/wireless/ps5678/ps10981/design_guide_c07-693245.pdf

Mobility Design Guides

http://www.cisco.com/en/US/netsol/ns820/networking_solutions_program_home.html

Software Support and Downloads

<http://www.cisco.com/tac>

New Generation of Cisco Aironet Access Points

http://www.cisco.com/en/US/prod/collateral/wireless/ps5678/ps10981/at_a_glance_c45-636090.pdf

802.11ac Customer Use Cases

http://www.cisco.com/en/US/prod/collateral/wireless/ps5678/ps13367/at_a_glance_c45-729588.pdf

Adaptive Radio Modules

http://www.cisco.com/en/US/prod/collateral/wireless/ps5678/ps11983/at_a_glance_c45-727334.pdf

New Generation of Cisco Aironet Access Points

http://www.cisco.com/en/US/prod/collateral/wireless/ps5678/ps10981/at_a_glance_c45-636090.pdf

802.11ac Wave-1 Module Datasheet

http://www.cisco.com/en/US/prod/collateral/modules/ps12859/ps13128/data_sheet_c78-727794.html

802.11ac – The Fifth Generation Wi-Fi Technical Whitepaper

http://www.cisco.com/en/US/prod/collateral/wireless/ps5678/ps11983/white_paper_c11-713103_ps12859_Products_White_Paper.html