

# User's Manual

## JetDrive Go App



(Version 1.1)

## Table of Contents

1. Introduction.....	3
2. Hardware Requirements .....	4
3. System Requirements .....	4
4. Supported File Formats .....	4
5. Getting Started .....	5
6. JetDrive Go App.....	7
7. App - JetDrive Go.....	8
7.1 Browse Mode .....	9
7.2 Select Mode.....	11
8. App - My Storage .....	13
8.1 Browse Mode .....	14
8.2 Select Mode.....	16
9. App - Camera Roll .....	18
9.1 Browse Mode .....	19
9.2 Select Mode.....	20
10. App - Backups .....	22
11. App - Settings .....	24
11.1 Storage.....	25
11.2 Information.....	25
12. End-User License Agreement (EULA) .....	27

## **1. Introduction**

Transcend JetDrive Go can instantly free up memory on your iPhone, iPad and iPod Touch without any hassles to transfer photos and videos to computers in order to release memory capacity. Powered by the free-to-download JetDrive Go App from the App Store, Transcend JetDrive Go allows you to instantly browse and manage files between a flash drive and your iPhone, iPad or iPod Touch in a more organized and protective way. JetDrive Go App will automatically classify your files into Folder, Photo, Video and Document to not only save your time on doing it by yourself but also allow you to find the data you are looking for in a flash. With all the necessary browsers packaged in one App, you will not be prompted to download additional applications to open different types of files. Additionally, Transcend JetDrive Go features an extended design on the lightning connector for easy plug-in in case iPhone or iPad casing might block the JetDrive Go from completely connecting with the lightning port of the Apple devices.

### **JetDrive Go App for iPhone/iPad/iPod Touch**

- Auto-launch app when plugged in JetDrive Go
- All-in-one browser: Photo Viewer, Video Player, Music Player, and Document Pre-viewer
- Efficient file management between Apple devices and JetDrive Go
- Instant backup of Camera Roll to JetDrive Go
- Real-time storage information display

## 2. Hardware Requirements

Transcend JetDrive Go series is compatible with the following Apple devices listed.

### Transcend JetDrive Go

- JDG300
- JDG500

### Apple devices

- iPhone 5 / iPhone 5c / iPhone 5s / iPhone 6 / iPhone 6 Plus  
iPhone 6s / iPhone 6s Plus
- iPad Air / iPad Air 2
- iPad mini / iPad mini 2 / iPad mini 3 / iPad mini 4
- iPad (4th generation)
- iPad Pro
- iPod touch (5th generation) / iPod touch (6th generation)

## 3. System Requirements

- Apple devices with iOS 8 or later

## 4. Supported File Formats

Transcend JetDrive Go App is compatible with **FAT32** file system only. Supported file formats are listed as below.

Category	Format
Photo	JPG / JPEG / TIF / TIFF / BMP / BMPF / CIF / PNG / GIF / ICO / CUR / XBM
Video	MP4 / MOV / M4V / AVI / WMV / AVI / MKV / FLV / MPG / RMVB / TS / 3gp
Music	MP3 / AIF / WAV / AIFF / M4A / ACC
Document	DOC / DOCX / XLS / XLSX / PPT / PPTX / PDF / TXT / KEYNOTE / NUMBERS / PAGES / htm / html / rtf

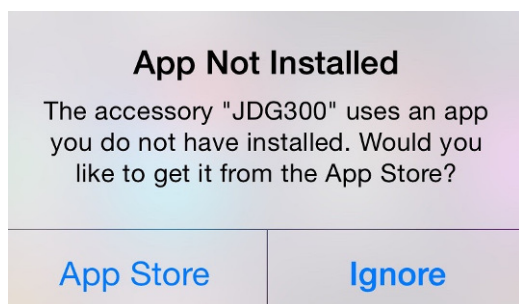
## 5. Getting Started

Please follow the steps below to start using the JetDrive Go.

1. Connect Transcend JetDrive Go directly to the Lightning connector of your Apple device.

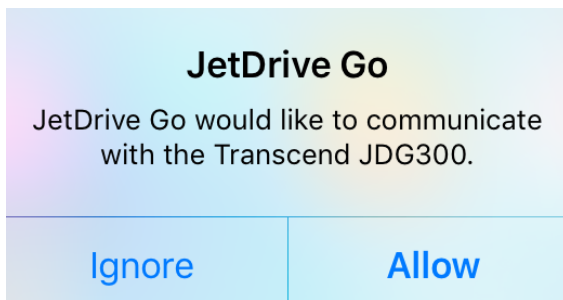


2. You will get prompted to install the JetDrive Go App for the first time use. Please click **App Store** to download the application.





3. After installing the JetDrive Go App, you will get prompted the message below every time when you plug in the JetDrive Go. Click “Allow” to proceed.

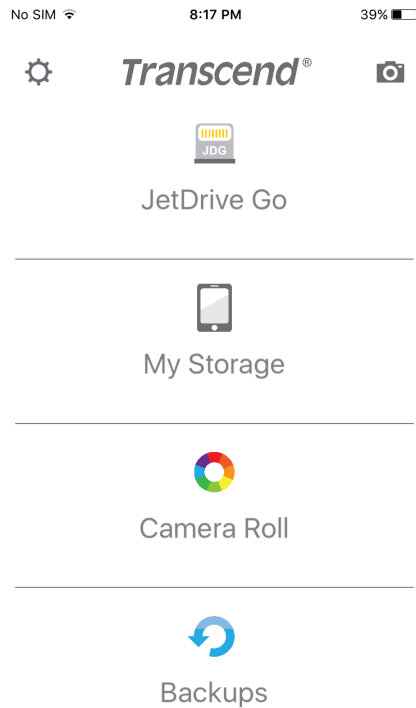


## 6. JetDrive Go App



1. Tap to open the JetDrive Go App.

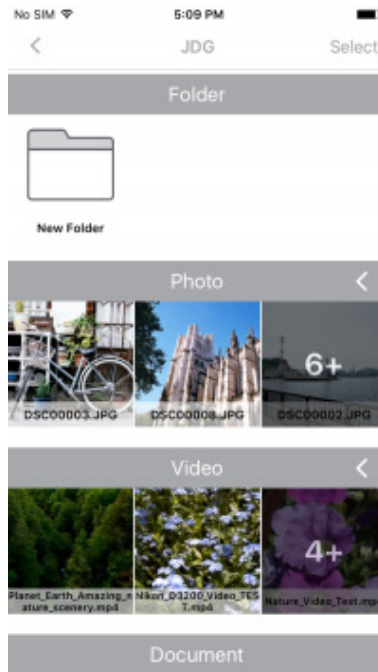
2. You will see the main page shown as below.



Feature	Description	Note
JetDrive Go	Browse and manage files in JetDrive Go.	JetDrive Go plugged is required.
My Storage	Browse and manage files in app private space.	Data is accessible with/without JetDrive Go plugged.
Camera Roll	Browse and manage photos / videos in Camera Roll.	Data is accessible with/without JetDrive Go plugged.
Backups	Back up Camera Roll photos / videos to JetDrive Go.	JetDrive Go plugged is required.

## 7. App - JetDrive Go

JetDrive Go is empty for the first time use. Files in JetDrive Go will be automatically classified into four sections including Folder, Photo, Video and Document according to the file types.



- Click “<” on the top left corner to return to the previous page.



- Click “**Select**” on the top right corner to select files.

Select

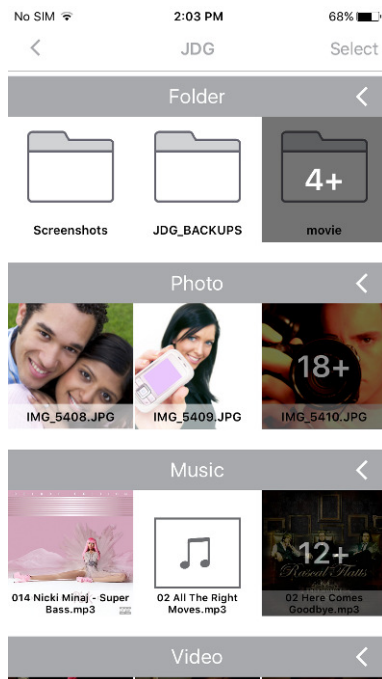
- Click “<” next to each of the section to expand all the files in that section, and click “∨” to shrink this section.





## 7.1 Browse Mode

Click the folder to browse all the files stored in this folder.



Click the photo to browse via Photo Viewer.



Click the video to play via Video Player.



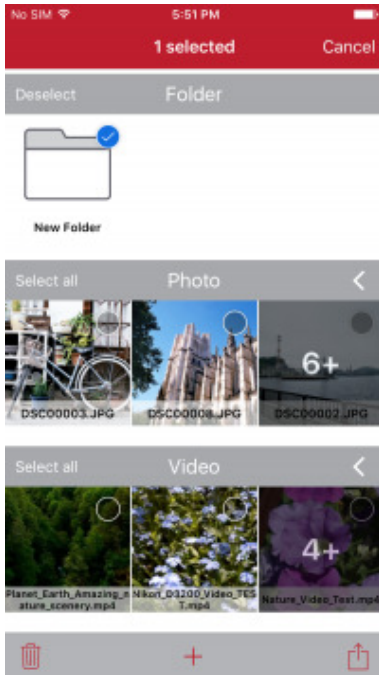
Click the document to view via Document Viewer.



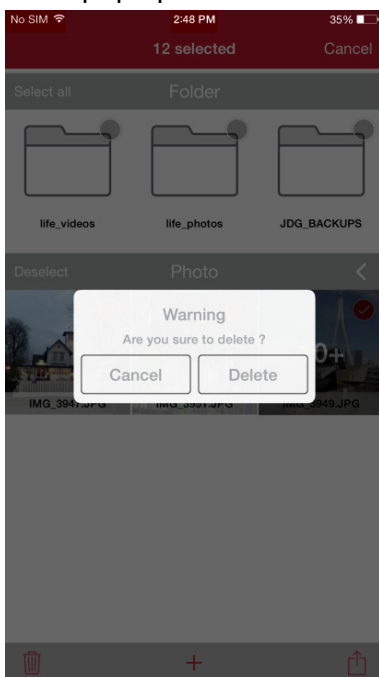
## 7.2 Select Mode

Please click “**Select**” on the top right corner to select files, or “**Cancel**” to return to Browse Mode.

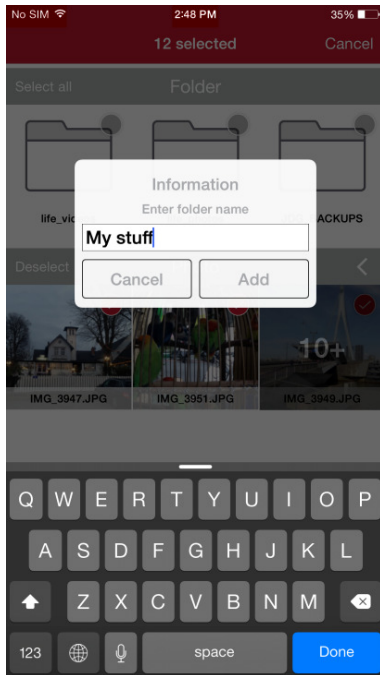
- Click “**Select all**” next to each of the section to select all the files in this section, or “**Deselect**” to give up selecting all the files in this section.



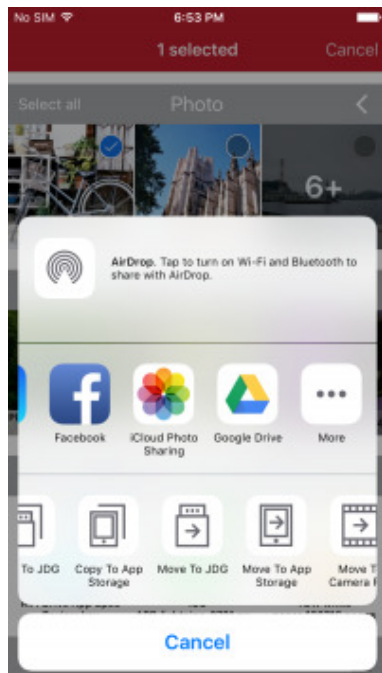
- Click the trash icon on the bottom left corner to delete selected files. A warning message will pop up to confirm the action.



- Click “+” next to the trash icon to add a new folder. A window will pop up to ask you to name the folder.

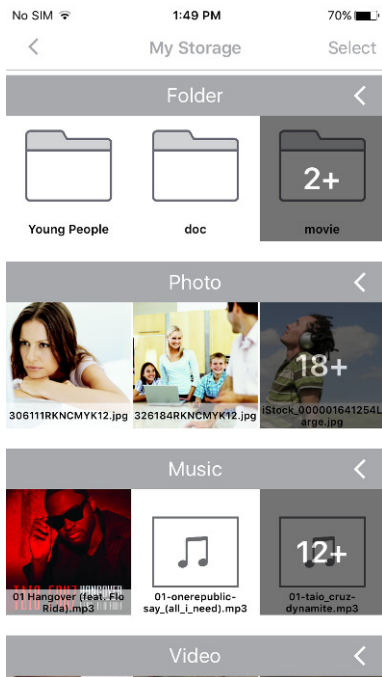


- Click the share icon on the bottom right corner to move, copy or share the selected files.



## 8. App - My Storage

My Storage is empty for the first time use. Files in this app private space will be automatically classified into four sections including Folder, Photo, Video and Document according to the file types.



- Click “<” on the top left corner to return to the previous page.



- Click “Select” on the top right corner to select files.

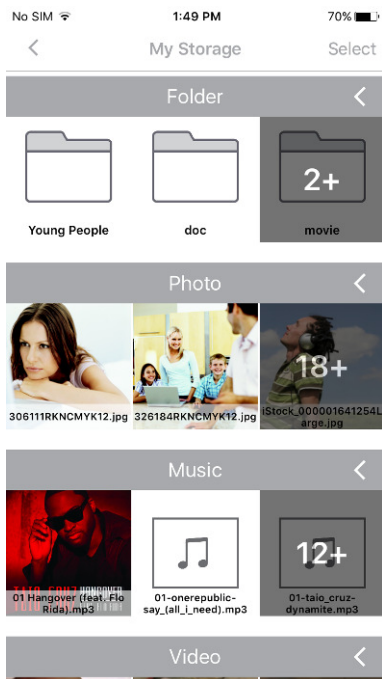
Select

- Click “<” next to each of the section to expand all the files in that section, and click “∨” to shrink this section.



## 8.1 Browse Mode

Click the folder to browse all the files stored in this folder.



Click the photo to browse via Photo Viewer.



Click the video to play via Video Player.



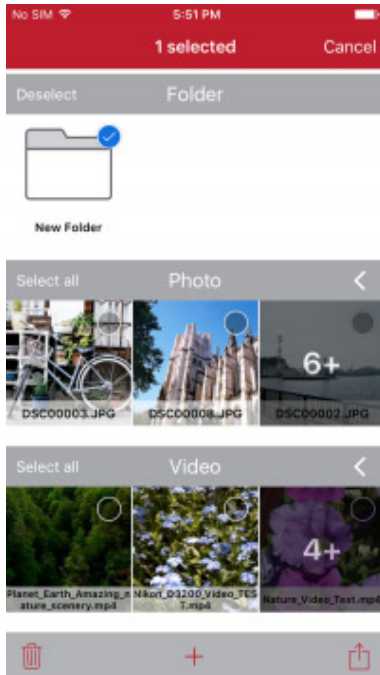
Click the document to view via Document Viewer.



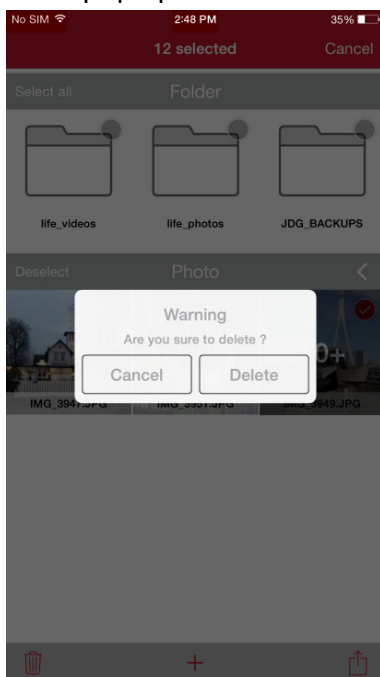
## 8.2 Select Mode

Please click “**Select**” on the top right corner to select files, or “**Cancel**” to return to Browse Mode.

- Click “**Select all**” next to each of the section to select all the files in this section, or “**Deselect**” to give up selecting all the files in this section.

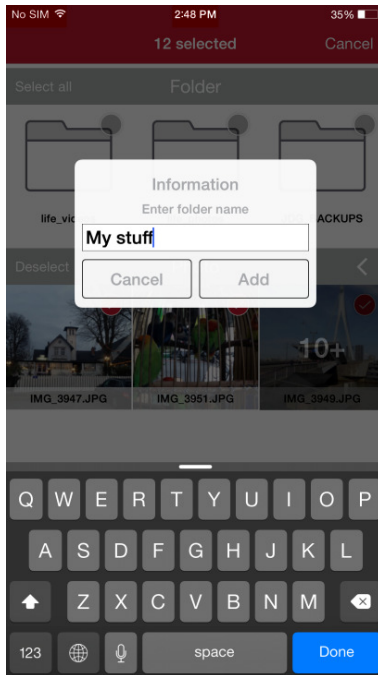


- Click the trash icon on the bottom left corner to delete selected files. A warning message will pop up to confirm the action.

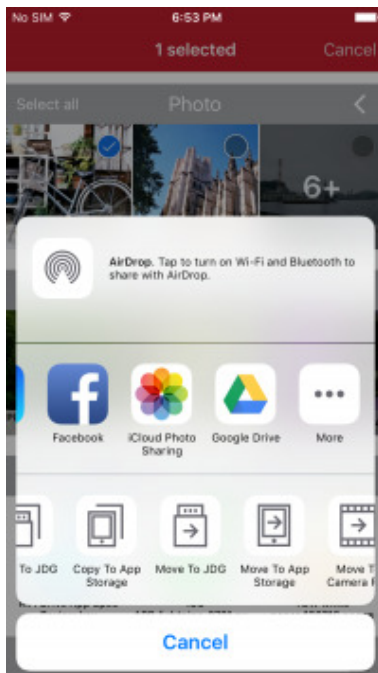




- Click “+” next to the trash icon to add a new folder. A window will pop up to ask you to name the folder.

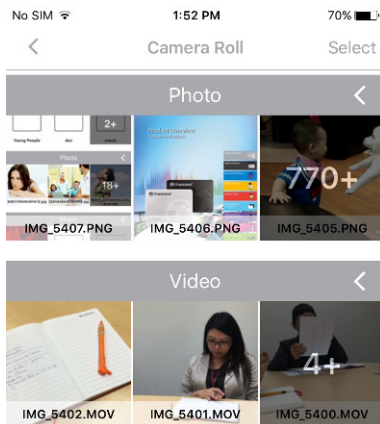


- Click the share icon on the bottom right corner to move, copy or share the selected files.



## 9. App - Camera Roll

The JetDrive Go App will synchronize Camera Roll with your Apple device, and will automatically classify files into two sections including Photo and Video.



Click “<” on the top left corner to return to the previous page.



- Click “**Select**” on the top right corner to select files.

Select

- Click “<” next to each of the section to expand all the files in that section, and click “∨” to shrink this section.



## 9.1 Browse Mode

Click the photo to browse via Photo Viewer.



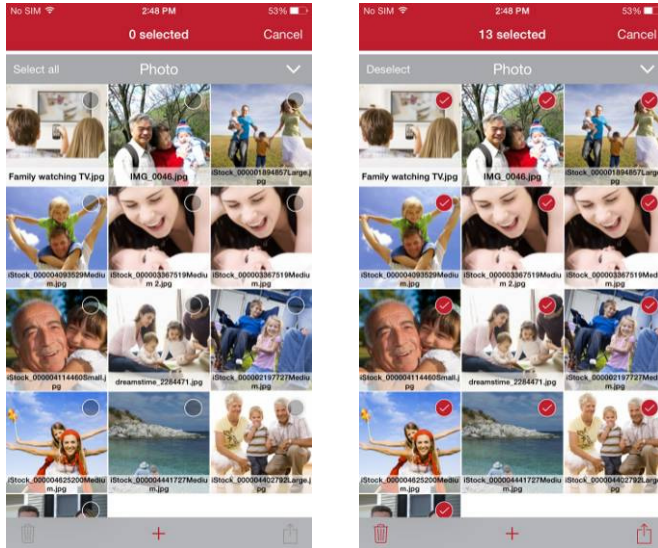
Click the video to play via Video Player.



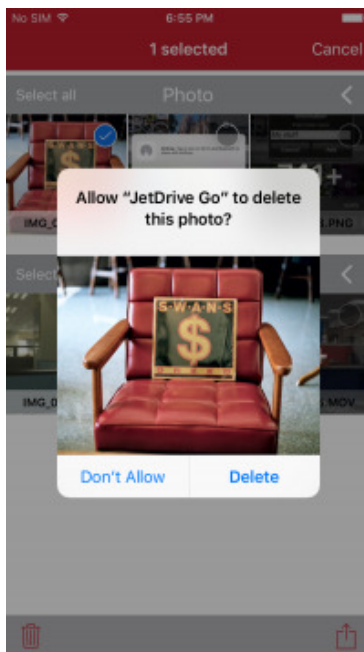
## 9.2 Select Mode

Please click **“Select”** on the top right corner to select files, or **“Cancel”** to return to Browse Mode.

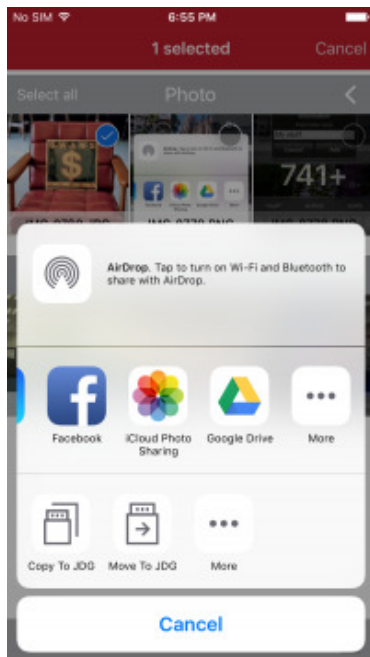
- Click **“Select all”** next to each of the section to select all the files in this section, or **“Deselect”** to give up selecting all the files in this section.



- Click the trash icon on the bottom left corner to delete selected files. A warning message will pop up to confirm the action.

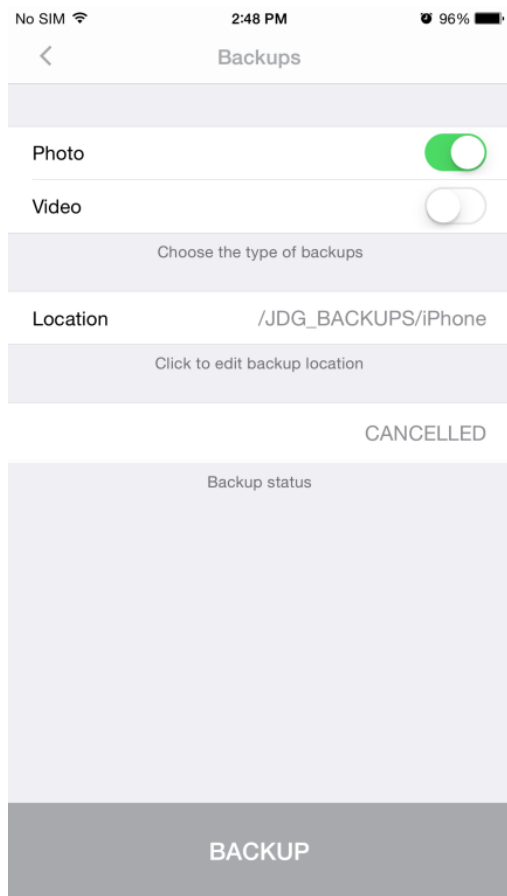


- Click the share icon on the bottom right corner to move, copy or share the selected files.



## 10. App - Backups

The JetDrive Go App allows you to back up photos and/or videos from Camera Roll to the JetDrive Go.



1. Choose to either back up Photo or Video, or both by enabling/ disabling the toggle switch.



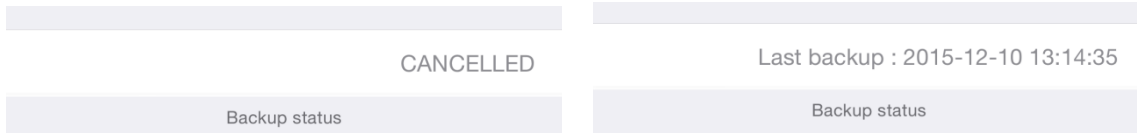
2. Click to choose the backup destination. A window will pop up to ask you to name the folder.



3. Click the Backup button to start the backup process.

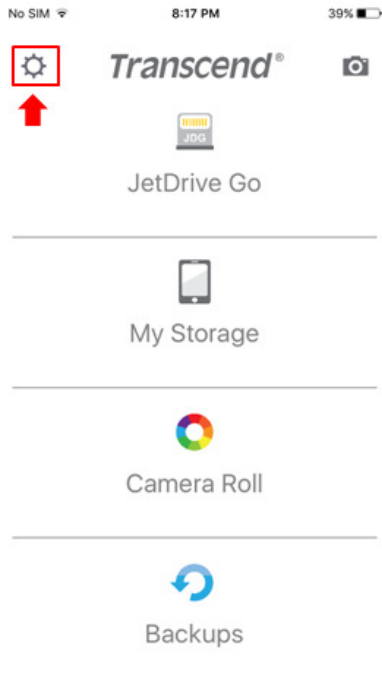


4. You will see the backup status shown for your reference.



## 11. App - Settings

To view the information of the JetDrive Go, please click the Settings icon on the top left corner of the main page.



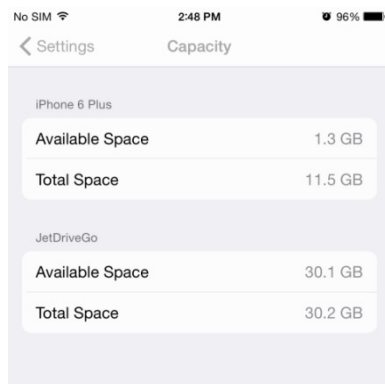
You will see Storage and Information.





## 11.1 Storage

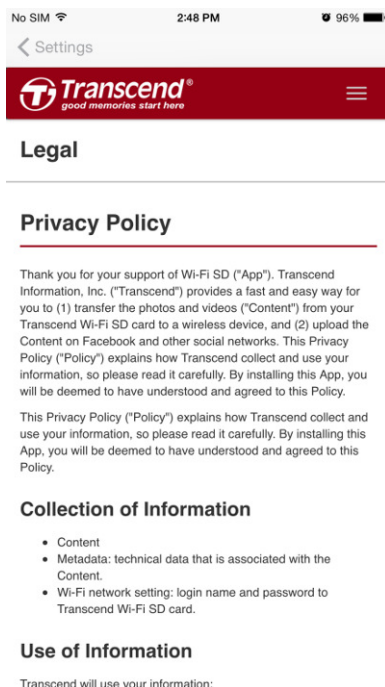
Capacity shows the available space and the total space of both your Apple device and the JetDrive Go.



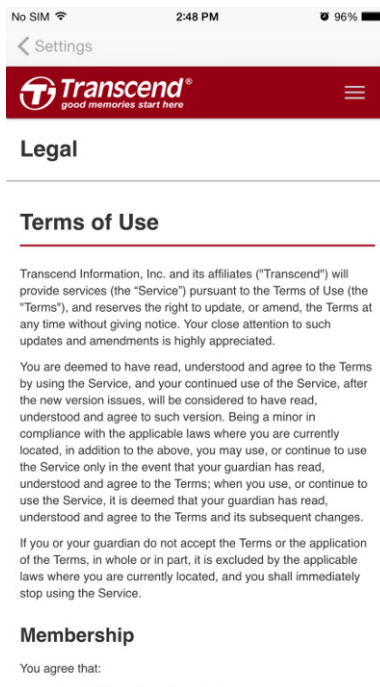
## 11.2 Information

Information not only discloses Privacy Policy, Terms of Use and License for your reference, but also provides Support and Feedback to guide you to Transcend web page directly or send us an email to let us your thoughts.

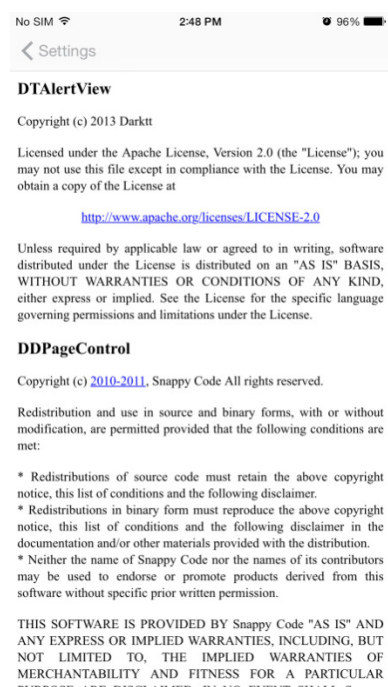
### Privacy policy



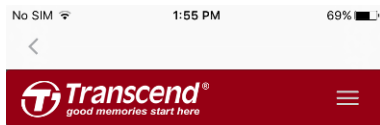
### Terms of Use



### License



## Support

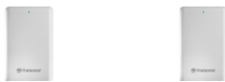


Support & Download

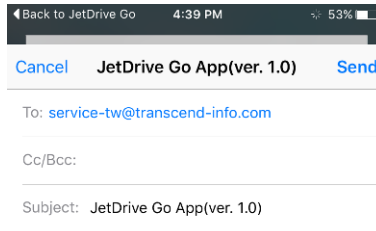
### Apple Solutions



StoreJet 300/500 for Mac



## Feedback



Sent from my iPhone



## **12. End-User License Agreement (EULA)**

### **Software license terms**

**Generally.** Transcend Information, Inc. (“Transcend”) is willing to grant the following license to install or use the software and/or firmware (“Licensed Software”) pursuant to this End-User License Agreement (“Agreement”), whether provided separately or associated with a Transcend product (“Product”), to the original purchaser of the Product upon or with which the Licensed Software was installed or associated as of the time of purchase (“Customer”) only if Customer accepts all of the terms and conditions of this Agreement. PLEASE READ THESE TERMS CAREFULLY. USING THE SOFTWARE WILL CONSTITUTE CUSTOMER'S ACCEPTANCE OF THE TERMS AND CONDITIONS OF THIS AGREEMENT. IF YOU DO NOT AGREE TO THE TERMS AND CONDITIONS OF THIS AGREEMENT, DO NOT INSTALL OR USE THE LICENSED SOFTWARE.

**License Grant.** Transcend grants to Customer a personal, non-exclusive, non-transferable, non-distributable, non-assignable, non-sublicensable license to install and use the Licensed Software on the Product in accordance with the terms and conditions of this Agreement. Intellectual Property Right. As between Transcend and Customer, the copyright and all other intellectual property rights in the Licensed Software are the property of Transcend or its supplier(s) or licensor(s). Any rights not expressly granted in this License are reserved to Transcend.

**License Limitations.** Customer may not, and may not authorize or permit any third party to: (a) use the Licensed Software for any purpose other than in connection with the Product or in a manner inconsistent with the design or documentations of the Licensed Software; (b) license, distribute, lease, rent, lend, transfer, assign or otherwise dispose of the Licensed Software or use the Licensed Software in any commercial hosted or service bureau environment; © reverse engineer, decompile, disassemble or attempt to discover the source code for or any trade secrets related to the Licensed Software, except and only to the extent that such activity is expressly permitted by applicable law notwithstanding this limitation; (d) adapt, modify, alter, translate or create any derivative works of the Licensed Software; (e) remove, alter or obscure any copyright notice or other proprietary rights notice on the Licensed Software or Product; or (f) circumvent or attempt to circumvent any methods employed by Transcend to control access to the components, features or functions of the Product or Licensed Software.

**Copying.** Customer may not copy the Licensed Software except that one copy of any separate software component of the Licensed Software may be made to the extent that such copying



is necessary for Customer's own backup purposes.

**Open Source.** The Licensed Software may contain open source components licensed to Transcend pursuant to the license terms specified as below, GNU General Public License (GPL); GNU Lesser General Public License (LGPL); Apache License; MIT License; Berkeley Standard Distribution (BSD), the terms of which are currently available at; and/or Code Project Open License (CPOL).

Customer may visit <http://www.transcend-info.com/Legal/?no=10> to learn specifics of the open source components contained in the Licensed Software and the respective license terms thereof ("Open Source License"). In the event that this Agreement conflicts with the requirements of the above one or more Open Source License with respect to the use of the corresponding open source components, Customer agrees to be bound by such one or more Open Source License.

**Disclaimer.** TRANSCEND MAKES NO WARRANTY AND REPRESENTATIONS ABOUT THE SUITABILITY, RELIABILITY, AVAILABILITY, TIMELINESS, LACK OF VIRUSES OR OTHER HARMFUL COMPONENTS AND ACCURACY OF THE INFORMATION, LICENSED SOFTWARE, PRODUCTS, SERVICES AND RELATED GRAPHICS CONTAINED WITHIN THE LICENSED SOFTWARE FOR ANY PURPOSE. ALL SUCH INFORMATION, LICENSED SOFTWARE, PRODUCTS, SERVICES AND RELATED GRAPHICS ARE PROVIDED "AS IS" WITHOUT WARRANTY OF ANY KIND. TRANSCEND HEREBY DISCLAIMS ALL WARRANTIES AND CONDITIONS WITH REGARD TO THIS INFORMATION, LICENSED SOFTWARE, PRODUCTS, SERVICES AND RELATED GRAPHICS, INCLUDING ALL IMPLIED WARRANTIES AND CONDITIONS OF MERCHANTABILITY, FITNESS FOR A PARTICULAR PURPOSE, WORKMANLIKE EFFORT, TITLE, AND NON-INFRINGEMENT. IN NO EVENT SHALL TRANSCEND BE LIABLE FOR ANY DIRECT, INDIRECT, PUNITIVE, INCIDENTAL, SPECIAL, CONSEQUENTIAL DAMAGES OR ANY DAMAGES WHATSOEVER INCLUDING, WITHOUT LIMITATION, DAMAGES FOR LOSS OF USE, DATA OR PROFITS, ARISING OUT OF OR IN ANY WAY CONNECTION WITH THE USE, PERFORMANCE OR ACCURACY OF THE LICENSED SOFTWARE OR WITH THE DELAY OR INABILITY TO USE THE LICENSED SOFTWARE, OR THE PRODUCT WITH WHICH THE LICENSED SOFTWARE IS ASSOCIATED, WHETHER BASED ON CONTRACT, TORT, NEGLIGENCE, STRICT LIABILITY OR OTHERWISE, EVEN IF TRANSCEND HAS BEEN ADVISED OF THE POSSIBILITY OF SUCH DAMAGES.

**Limitation of Liability.** IN ANY CASE, TRANSCEND 'S LIABILITY ARISING OUT OF OR IN CONNECTION WITH THIS AGREEMENT WILL BE LIMITED TO THE TOTAL AMOUNT ACTUALLY AND ORIGINALLY PAID AT RETAIL BY CUSTOMER FOR THE PRODUCT. The foregoing Disclaimer and Limitation of Liability will apply to the maximum extent permitted by applicable law. Some jurisdictions do not allow the exclusion or limitation of incidental or consequential



damages, so the exclusions and limitations set forth above may not apply.

**Termination.** Transcend may, in addition to any other remedies available to Transcend, terminate this Agreement immediately if Customer breaches any of its obligations under this Agreement. **Miscellaneous.** (a) This Agreement constitutes the entire agreement between Transcend and Customer concerning the subject matter hereof, and it may only be modified by a written amendment signed by an authorized executive of Transcend. (b) Except to the extent applicable law, if any, provides otherwise, this Agreement will be governed by the law of the Republic of China, excluding its conflict of law provisions. © If any part of this Agreement is held invalid or unenforceable, and the remaining portions will remain in full force and effect. (d) A waiver by either party of any term or condition of this Agreement or any breach thereof, in any one instance, will not waive such term or condition or any subsequent breach thereof. (e) Transcend may assign its rights under this Agreement without condition. (f) This Agreement will be binding upon and will inure to the benefit of the parties, their successors and permitted assigns.

© 2015 Transcend Information, Inc. All rights reserved. All brand names are registered trademarks of their respective owners. Specifications subject to change without notice.