

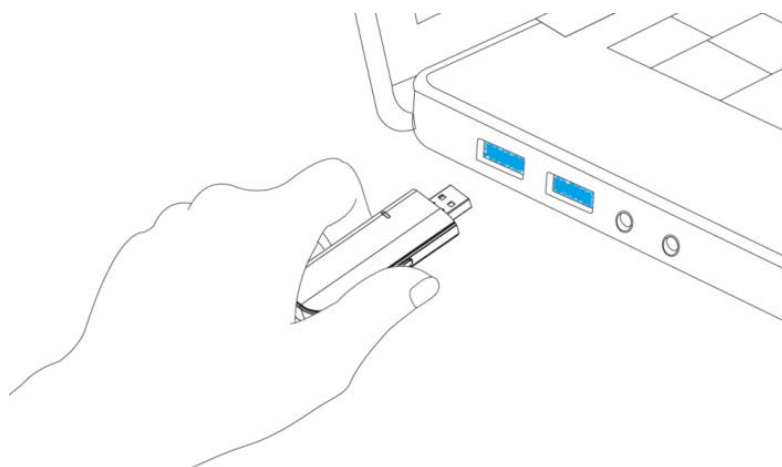
Quick Install Guide

WD-1030 | AC1200 Wireless USB Adapter

1 Initial Installation

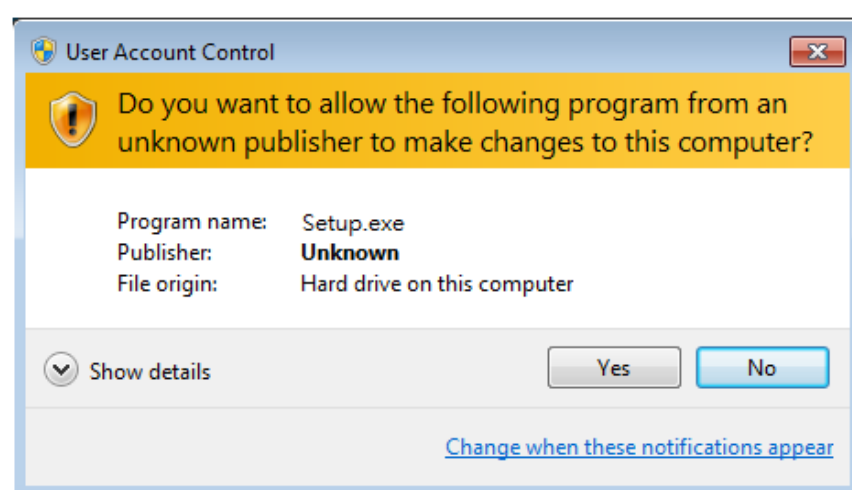
In order for your computer to recognize the USB Adapter, a driver (mandatory) and configuration utility (highly recommended) must first be installed.

1. Power on your computer. Insert the USB Wireless Adapter into an available port (USB 3.0 preferable) on your PC/laptop.

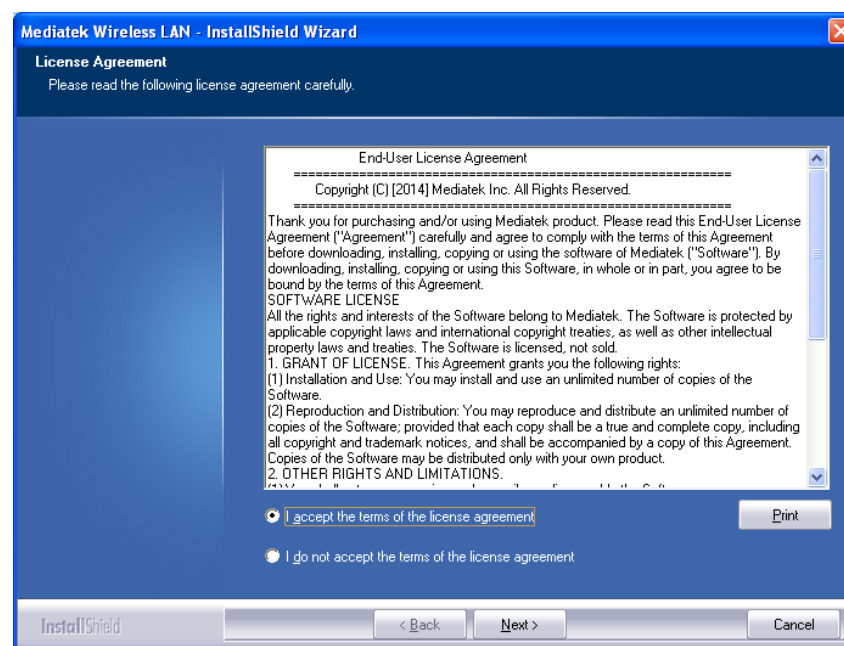


2. Insert the Installation CD into the CD/DVD drive of your computer, and run the 'Setup.exe' program. The description below is based on Windows XP operating system.

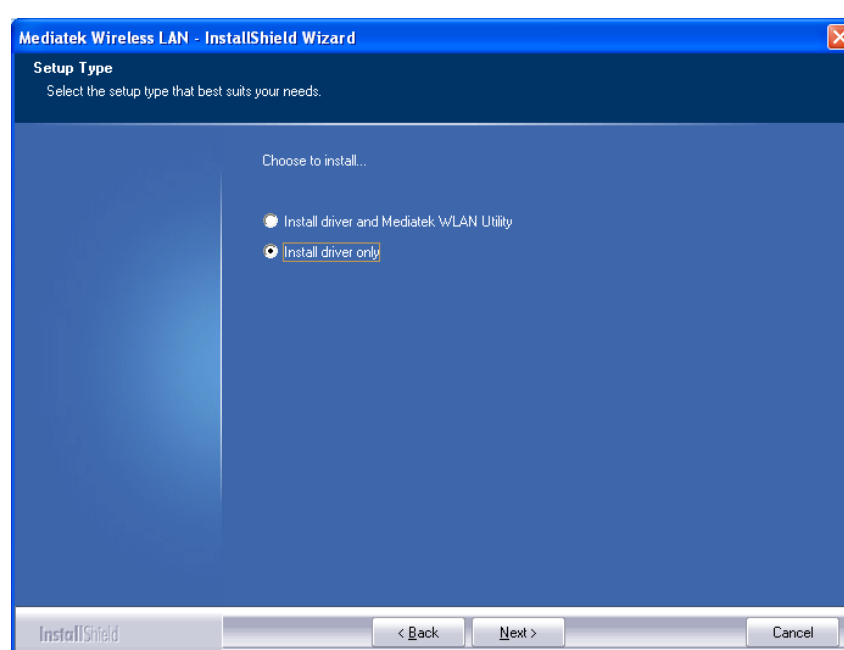
(Note: On a Windows7/Windows 8 computer, you may see a UAC (User Account Control) window popup to warn you that this program is going to make changes to your computer, click 'Yes' to continue).



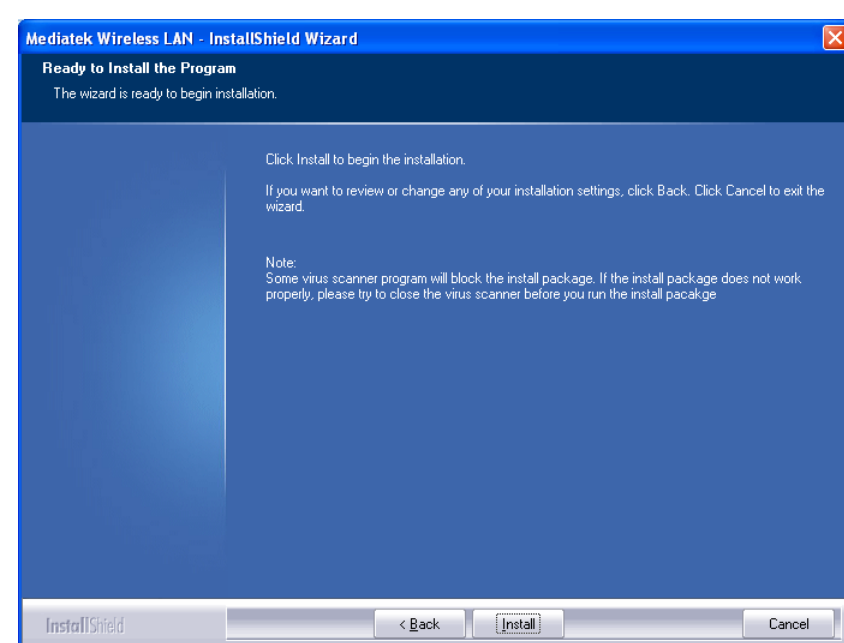
3. Read the end user license agreement and click 'I accept the terms of the license agreement' and 'Next' to accept the license agreement.



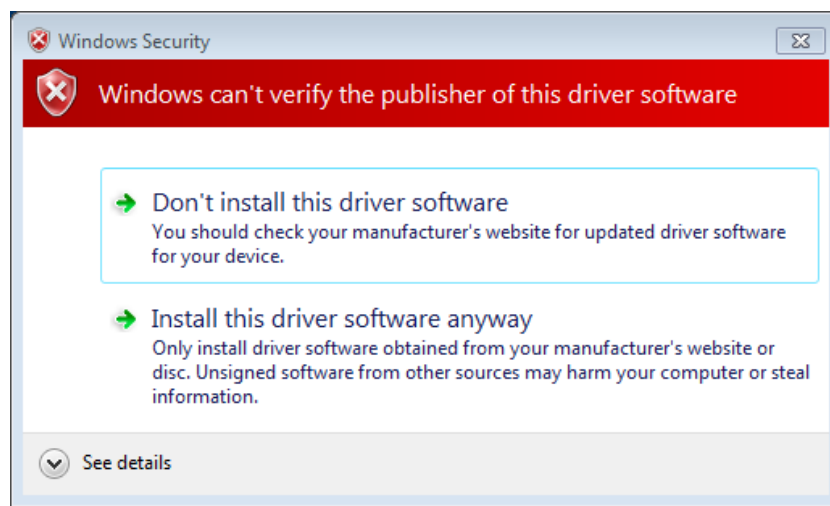
4. We recommend installing the driver and WLAN utility option if the adapter is being installed on this computer for the first time. If you want to update the driver only, choose 'Install driver only'. Click 'Next' to continue.



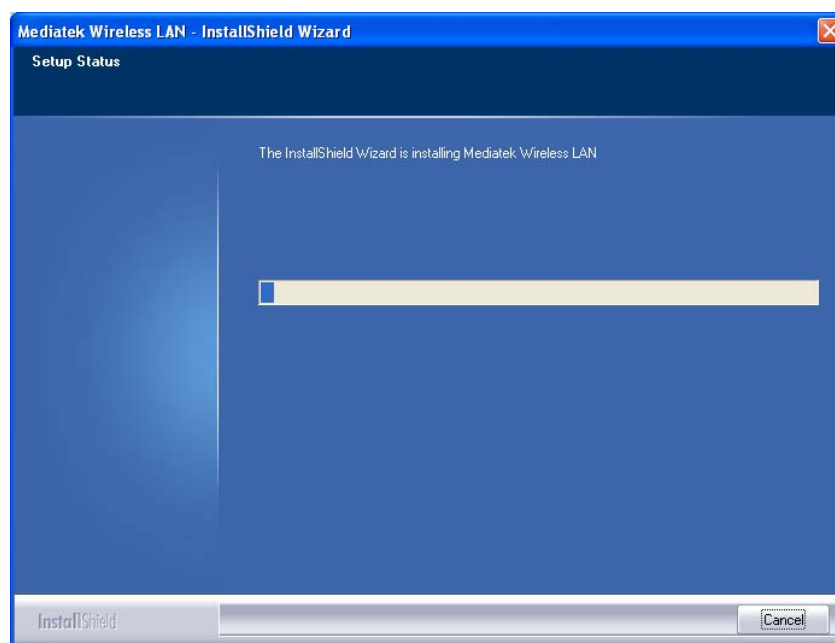
5. Click 'Install' to begin the installation.



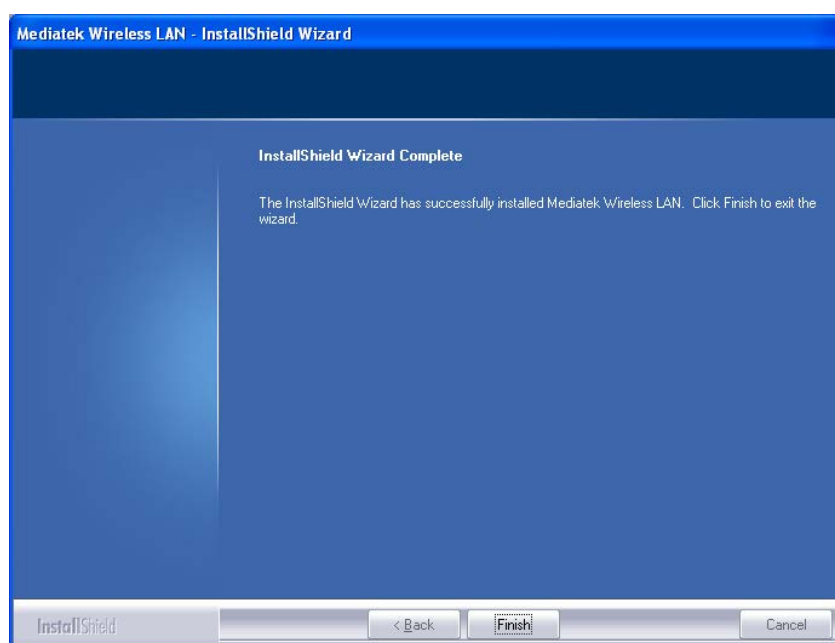
6. If you see this message below, click 'Install this driver software anyway' to continue.



7. Please be patient while installation is in progress, this may require a few minutes.



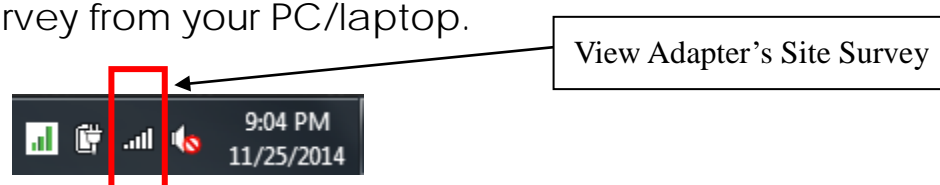
8. When you see this message, please click 'Finish' to complete the installation process.



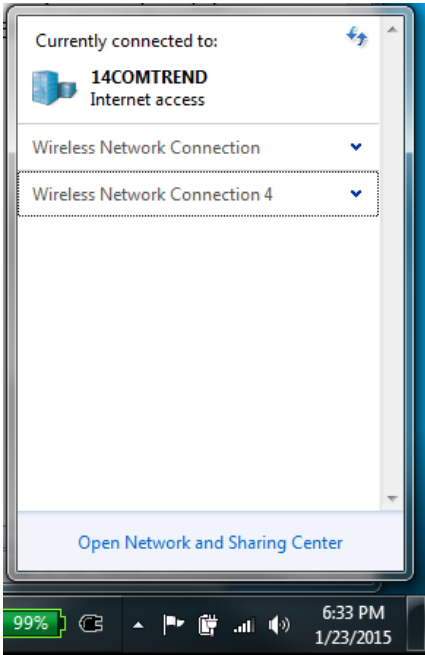
2 Connecting to the Internet

Note: If your wireless router/access point does not support Wi-Fi Protected Setup (WPS) then please skip steps 9-11 and refer to the user manual to connect your adapter to your router/access point.

9. View the list of available networks via Site Survey from your PC/laptop.



10. If you already have an active network adapter (e.g. The 11n adapter already included in your laptop), then select the new “Wireless Network Connection” matching this adapter 11ac adapter.



11. Select the router/access point to which you would like to connect.



3 You are Done! Enjoy your WiFi!

NOTE: For instructions on additional features, visit our online User Manual:
<http://us.comtrend.com/products/public/product/home-networking/wd-1030.html>



QR code

For more information:
Facebook: <https://facebook.com/Comtrend>
Website: <http://us.comtrend.com/>
Support: Visit our website or call 1-877-COMTREND (1-877-266-8736)

