

# **Kanguru BD-RE USB2.0 16x Blu-Ray Burner Drive**

## **User Manual**

## NOTICES AND INFORMATION

### **Please be aware of the following points before using your Kanguru DVDRW Drive**

Copyright © 2015 Kanguru Solutions. All rights reserved.

Microsoft® and Windows® are registered trademarks of Microsoft Corporation. DVD Logo is a trademark of DVD Format/Logo licensing Corp., registered in US, Japan and other countries. BD Logo is a trademark registered in US, Japan and other countries. All other brands or product names are trademarks of their respective companies or organizations.

Kanguru Solutions will not be held responsible for any illegal use of this product nor any losses incurred while using this product. The user himself is responsible for the copyright laws, and is fully responsible for any illegal actions taken.

### **Customer Service**

To obtain service or technical support for your system, please contact Kanguru Solutions Technical Support Department at 508-376-4245, or visit [www.Kanguru.com](http://www.Kanguru.com) for web support.

### **Legal notice**

In no event shall Kanguru Solutions' liability exceed the price paid for the product from direct, indirect, special, incidental, or consequential software, or its documentation. Kanguru Solutions offers no refunds for its products. Kanguru Solutions makes no warranty or representation, expressed, implied, or statutory, with respect to its products or the contents or use of this documentation and all accompanying software, and specifically disclaims its quality, performance, merchantability, or fitness for any particular purpose. Kanguru Solutions reserves the right to revise or update its products, software, or documentation without obligation to notify any individual or entity.

### **Caution**

The laser used in the External Blu-ray Disc Rewriter can damage your eyes. Do not attempt to open the cover. To reduce the risk of electric shock, do not remove the cover (or back). There are no user-serviceable parts inside. Refer servicing to qualified service personnel. Use of controls or performance of procedures other than those specified herein may result in hazardous radiation exposure.

### **Warning**

To reduce the risk of fire or electric shock, do not expose this appliance to rain or moisture

### **FCC Compliance Statements**

This equipment has been tested and found to comply with the limits for a Class B digital device, pursuant to Part 15 of the FCC Rules. These limits are designed to provide reasonable protection against harmful interference in a residential installation. This equipment generates, uses and can radiate radio frequency energy and, if not installed and used in accordance with the instructions, there is no guarantee that interference will not occur in a particular installation. If this equipment does cause harmful interference to equipment off and on, the user is encouraged to try to correct the interference by one or more of the following measures:

- Reorient or relocate the receiving antenna.
- Increase the Distance between the equipment and receiver.
- Connect the equipment into an outlet on a circuit different from that to which the receiver is connected.
- Consult the dealer or an experienced radio/TV technician for help.

## Table of Contents

<b>1. Introduction.....</b>	<b>4</b>
1.1 System Requirements .....	4
1.2 Parts and Functions .....	5
1.3 Connecting to Your Computer .....	5
<b>2. General Operation .....</b>	<b>6</b>
2.1 Playing Blu-ray movies .....	6
2.2 Burning to optical media.....	6
2.3 Use with Windows XP / Vista / 7 / 8.....	7
2.4 Use with Mac OS X.....	7
<b>3. Technical Specifications.....</b>	<b>8</b>
<b>4. Warranty.....</b>	<b>9</b>
<b>5. Tech Support.....</b>	<b>10</b>

## 1. Introduction

Thank you for purchasing the Kanguru BD-RE External Blu-ray burner drive. With the ability to store up to 25GB of data on a single Blu-ray disc or 50GB on high capacity Blu-ray media, and the ability to playback crystal clear Blu-ray movies, the Kanguru BD-RE Blu-ray drive gives you the latest in high definition technology.

The Kanguru BD-RE Blu-ray drive also supports DVD/CD burning and playback.

### Features

- Up to 16X BD burning
- Up to 16x DVD burning
- Up to 48x CD burning
- Universal Serial Bus (USB) 2.0 interface
- Supports 50GB high capacity Blu-Ray media
- Emergency eject support
- Single and Dual-layer support
- 4MB buffer
- Buffer Under Run error protection technology
- 3D playback capable

### Package contents

- 1 x Kanguru BD-RE
- 1 x USB2.0 cable
- 1 x AC power adapter
- 1 x Burning software (Windows only)
- 1 x Quick Start Guide
- 1 x Registration form

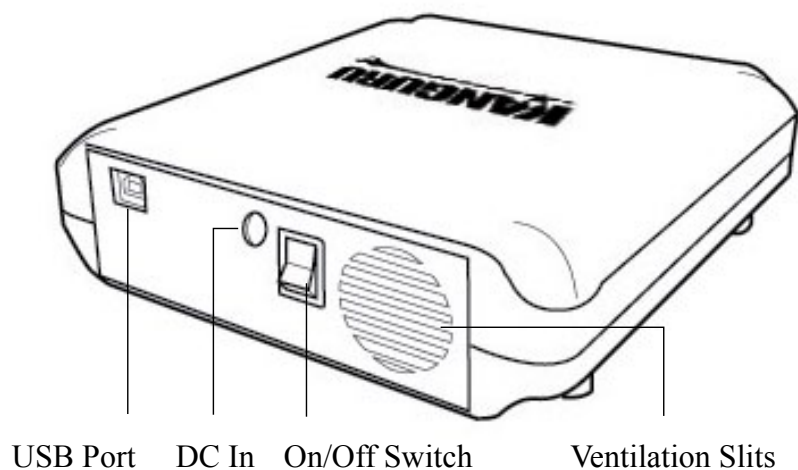
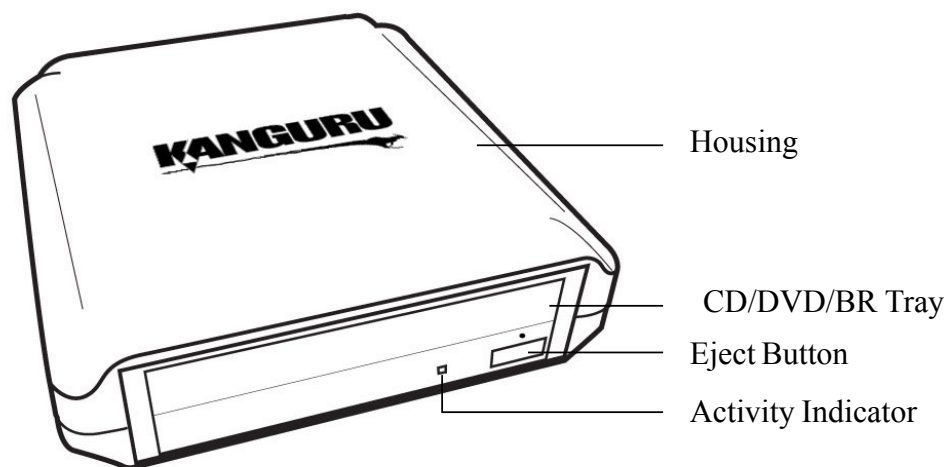
If any of the above items are missing, please contact the Kanguru Solutions Technical Support Department at: (508) 376-4245 and replacement parts will be shipped ASAP.

## 1.1 System Requirements

- CPU - Pentium D 3.2 GHz or higher (recommended Core 2 Duo or higher)
- OS - Windows XP SP2\*, Windows Vista, Windows 7, Windows 8
- RAM - 1GB or more
- HDD - 30GB or more available space
- Interface - USB 2.0 port with EHCI driver software

*\* In line with Microsoft's End-of-Support announcement for Windows XP, Kanguru Solutions is ending support for its line of products running on the Windows XP platform. While our products have been quality tested internally on Windows XP, we cannot guarantee normal product operation on an unsupported OS.*

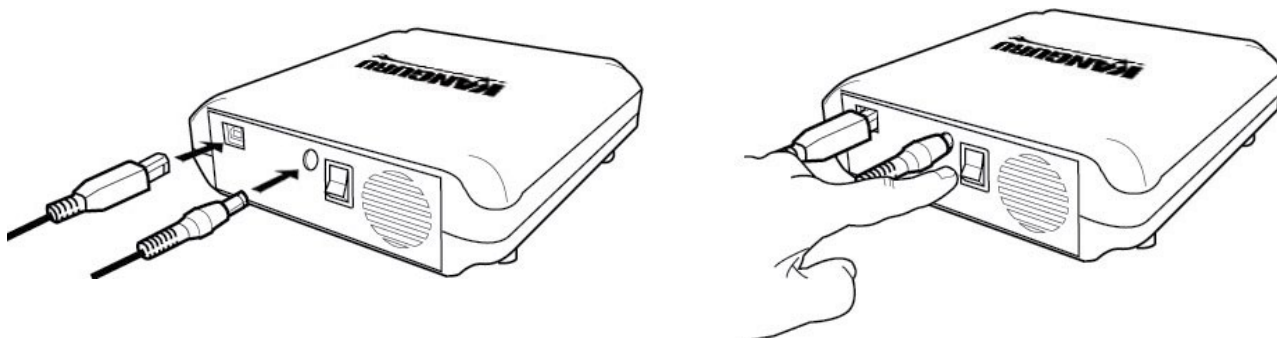
## 1.2 Parts and Functions



## 1.3 Connecting to Your Computer

Connect your drive to the computer as described below:

1. Connect the USB cable from your BD-RE directly to your computer.
2. Connect the AC power adapter from your BD-RE to an electrical outlet.
3. Flip the On/Off switch to the On position.



## 2. General Operation

Please carefully read the following instructions and make sure you understand them completely. For ease of use, please print this manual for reference.

### Before first use

- Don't move the drive suddenly from a cold place to warm one.
- Make sure to remove the disc before moving the drive.
- Prevent foreign objects, such as liquids or metal, from entering the drive.
- Don't interrupt the electric power while the drive is operating.

### 2.1 Playing Blu-ray movies

To play a Blu-ray movie on your computer, there are several things you will need in addition to your Kanguru BD-RE Blu-ray drive. First you will need Blu-ray playback software and HDCP supported hardware.

**Important!** Due to copyright protection features, certain requirements must be met in order to playback BD and HD DVD movies on a computer. When using digital video connections, both your monitor and graphics card must support High-bandwidth Digital Content Protection (HDCP). Please refer to your monitor or graphic card manufacturer's web site to see if your hardware supports HDCP. Some video cards that currently support HDCP:

- nVIDIA: GeForce 7800 GTX 512 / 7900 GT / 7900 GX2 / 7900 GTX / 7950 GX2 / 8600 GS / 8600 GT / 8600 GTS / 8800 GTX or higher with 256MB min memory.
- ATI: Radeon® X1950/ HD2300/ HD2400/ HD2600 series or higher with 256MB min memory.

Graphic card driver shall meet AACS compliance criteria. Please consult your graphics card vendor for proper driver solution.

**Note:** Apple has not officially supported Blu-ray playback in Mac OS X yet. There are currently no applications for playback of HDCP video for Mac OS X.

### 2.2 Burning to optical media

Kanguru recommends using the following brands of media for burning:

- BD-R Maxell, TDK, Philips, LG
- BD-RE Maxell, TDK, Philips, Sony, Panasonic
- DVD+R Sony, Verbatim/Mitsubishi Chemical, Taiyo Yuden, Ricoh, Philips
- DVD+RW Sony, Verbatim/Mitsubishi Chemical, Ricoh, Philips
- DVD-R Sony, Verbatim/Mitsubishi Chemical, Taiyo Yuden, Maxell, TDK, Philips
- DVD-RW Sony, Verbatim/Mitsubishi Chemical, TDK, Philips
- CD-R Sony, Verbatim/Mitsubishi Chemical, Taiyo Yuden, Maxell, Philips
- CD-RW Sony, Verbatim/Mitsubishi Chemical, Philips

Compatibility issues with read/write functions may occur depending on the media manufacturing quality. Please note that even among the media manufacturers listed above, some media may exist that is not compatible.

## 2.3 Use with Windows XP / Vista / 7 / 8

The Kanguru BD-RE Blu-ray drive does not require any additional driver files for use with Windows XP, Windows Vista or Windows 7. These operating systems have built-in drivers that support USB connection with the USB Blu-ray drive. Simply connect your Kanguru Blu-ray drive to your PC through a USB port and turn it on. Windows will automatically detect the new hardware and install the necessary driver. When the installation has completed successfully, you will find a “BD-RE Drive” icon displayed under My Computer.

To properly disconnect the drive from your computer, click on the Safely Remove Hardware icon located in the taskbar. This will allow you to select any removable devices that you have connected to your computer. Select the drive that you want to remove and Windows will alert you when it is safe to remove the device.

**WARNING!** Do not disconnect a USB drive from your computer while copying files to or from the device or while files or applications stored on the drive are in use. DOING SO MAY RESULT IN LOSS OF DATA.

## 2.4 Use with Macintosh OS X

Simply plug in the Kanguru BDRW to your Mac and the operating system will automatically install the necessary driver. Once the driver has been installed a CD/DVD/BD icon will appear on your desktop whenever a disc is inserted into the drive.

**Note:** The CD/DVD/BD icon will only appear on your desktop when a disc is inserted in the drive. You will not see an icon on your desktop if there's no disc present.

To properly eject a disc from the drive, drag the CD/DVD/BD icon from your desktop to the trash bin. This will safely eject the disc from the drive. Once the disc has been removed you can safely disconnect your Kanguru BD-RE. Your system may freeze up or give you an error message if you remove the device without properly stopping it first.

**WARNING!** Do not unplug the Kanguru BD-RE from the USB port of your computer or hub while copying files to or from the device or while files or applications stored on the Kanguru BD-RE are in use. DOING SO MAY RESULT IN LOSS OF DATA.

**Note:** Apple has not officially supported Blu-ray playback in Mac OS X yet. There are several software solutions that allow you to write to Blu-ray discs, but no applications for playback of HDCP video (for more info on playing HDCP video, see section 2.1 *Playing Blu-ray movies* on p.6).

### 3. Technical Specifications

Model Number	U2-BRRW-16X
Model	BD-RE USB2.0 External 12x (Dual Layer)
Interface	USB 2.0 (Backwards compatible with USB1.1)
Format	Multi-Format: BD-R, BD-R DL, BD-RE, BD-RE DL, DVD+/-R, DVD+/-R DL, DVD+/-RW and DVD-RAM
Burning Speeds	BD-R: 16x BD-R DL: 8x BD-RE: 2x DVD+R: 16x DVD-R: 16x DVD-RW: 6x DVD+RW: 8x DVD-R DL: 8x CD-R: 48x CD-RW: 24x
Read Speeds	BD-ROM: 8x DVD-ROM: 16x DVD-ROM DL: 12x CD-ROM: 48x
Supported Media Formats	BD-ROM, BD-ROM DL, BD-R, BD-R DL, BD-R (LTH), BD-RE, BD-RE DL, DVD-ROM, DVD+R, DVD+R DL, DVD+RW, DVD-R, DVD-R DL, DVD-RW, DVD-RAM, CD-Audio, CD-ROM (Mode 1 and mode 2), CD-ROM XA (Mode 2, form 1 and form 2), Photo CD (Single and multiple sessions), CD Extra, CD-TEXT, CD-R and CD-RW discs. Playback CD-I, Video-CD, DVD-Video and BD-AV with special function, such as hardware/software decoders
Buffer Under Run Protection	Yes
Cache	4MB
Writing Methods	DAO (disk at once), SAO (session at once), TAO (track at once), Variable or Fixed Packet Write, Multisession
Access Times (TYP)	BD 180ms; DVD 160ms; CD 150ms
OS Compatibility	- Windows Vista - Windows 7 - Windows 8
Weight	3 lbs
Dimensions	7.25" x 7.5" x 2"



## **4. WARRANTY**

This product carries a \*1-year limited warranty from the date of purchase. Kanguru Solutions is not responsible for any damages incurred in the shipping process. Any claims for loss or damage must be made to carrier directly. Claims for shipping errors should be reported to Kanguru Solutions within three (3) working days of receipt of merchandise.

## **5. TECH SUPPORT**

If you experience any problems installing your Kanguru product or have any technical questions regarding any of our products, please call our tech support department. Our tech support is free and available Monday thru Friday, 9am to 5pm EST.

Call 1-508-376-4245

Or visit our website at [www.Kanguru.com](http://www.Kanguru.com)



Kanguru Solutions  
1360 Main Street  
Millis, MA 02054  
[www.kanguru.com](http://www.kanguru.com)

07.08.15 v3 © 2015 Kanguru Solutions

Legal terms and conditions available at [www.kanguru.com](http://www.kanguru.com). Please review and agree before use. Thank you.