

AXIS Washer Kit A

ENGLISH

Installation Guide

Legal Considerations

Video and audio surveillance can be regulated by laws that vary from country to country. Check the laws in your local region before using this product for surveillance purposes.

Liability

Every care has been taken in the preparation of this document. Please inform your local Axis office of any inaccuracies or omissions. Axis Communications AB cannot be held responsible for any technical or typographical errors and reserves the right to make changes to the product and manuals without prior notice. Axis Communications AB makes no warranty of any kind with regard to the material contained within this document, including, but not limited to, the implied warranties of merchantability and fitness for a particular purpose. Axis Communications AB shall not be liable nor responsible for incidental or consequential damages in connection with the furnishing, performance or use of this material. This product is only to be used for its intended purpose.

Intellectual Property Rights

Axis AB has intellectual property rights relating to technology embodied in the product described in this document. In particular, and without limitation, these intellectual property rights may include one or more of the patents listed at www.axis.com/patent.htm and one or more additional patents or pending patent applications in the US and other countries.

Equipment Modifications


This equipment must be installed and used in strict accordance with the instructions given in the user documentation. This equipment contains no user-serviceable components. Unauthorized equipment changes or modifications will invalidate all applicable regulatory certifications and approvals.

Trademark Acknowledgments

AXIS COMMUNICATIONS, AXIS, ETRAX, ARTPEC and VAPIX are registered trademarks or trademark applications of Axis AB in various jurisdictions. All other company names and products are trademarks or registered trademarks of their respective companies.

Regulatory Information

Europe

 This product complies with the applicable CE marking directives and harmonized standards:

- Electromagnetic Compatibility (EMC) Directive 2004/108/EC. See *Electromagnetic Compatibility (EMC)* on page 2.
- Low Voltage (LVD) Directive 2006/95/EC. See *Safety* on page 2.
- Restrictions of Hazardous Substances (RoHS) Directive 2011/65/EU. See *Disposal and Recycling* on page 2.

A copy of the original declaration of conformity may be obtained from Axis Communications AB. See *Contact Information* on page 2.

Electromagnetic Compatibility (EMC)

This equipment has been designed and tested to fulfill applicable standards for:

- Radio frequency emission when installed according to the instructions and used in its intended environment.
- Immunity to electrical and electromagnetic phenomena when installed according to the instructions and used in its intended environment.

USA

This equipment has been tested and found to comply with the limits for a Class B digital device, pursuant to part 15 of the FCC Rules. These limits are designed to provide reasonable protection against harmful interference in a residential installation. This equipment generates, uses and can radiate radio frequency energy and, if not installed and used in accordance with the instructions, may cause harmful interference to radio communications. However, there is no guarantee that interference will not occur in a particular installation. If this equipment does cause harmful interference to radio or television reception, which can be determined by turning the equipment off and on, the user is encouraged to try to correct the interference by one or more of the following measures:

- Reorient or relocate the receiving antenna.
- Increase the separation between the equipment and receiver.
- Connect the equipment into an outlet on a circuit different from that to which the receiver is connected.
- Consult the dealer or an experienced radio/TV technician for help.

Europe

This product fulfills the requirements for immunity according to EN 50130-4 residential, commercial, light-industrial and industrial environments.

This product fulfills the requirements for emission according to EN 61000-6-3 residential, commercial and light-industrial environments.

Safety

This product complies with IEC/EN 60950-1 and IEC/EN 60950-22, Safety of Information Technology Equipment.

Disposal and Recycling

When this product has reached the end of its useful life, dispose of it according to local laws and regulations. For information about your nearest designated collection point, contact your local authority responsible for waste disposal. In accordance with local legislation, penalties may be applicable for incorrect disposal of this waste.

Europe



— This symbol means that the product shall not be disposed of together with household or commercial waste. Directive 2012/19/EU on waste electrical and electronic equipment (WEEE) is applicable in the European Union member states. To prevent potential harm to human health and the environment, the product must be disposed of in an approved and environmentally safe recycling process. For information about your nearest designated collection point, contact your local authority responsible for waste disposal. Businesses should contact the product supplier for information about how to dispose of this product correctly.

This product complies with the requirements of Directive 2011/65/EU on the restriction of the use of certain hazardous substances in electrical and electronic equipment (RoHS).

China



— This product complies with the requirements of the legislative act Administration on the Control of Pollution Caused by Electronic Information Products (ACPEIP).

Contact Information

Axis Communications AB
Emdälavägen 14

223 69 Lund
Sweden

Tel: +46 46 272 18 00

Fax: +46 46 13 61 30

www.axis.com

Support

Should you require any technical assistance, please contact your Axis reseller. If your questions cannot be answered immediately, your reseller will forward your queries through the appropriate channels to ensure a rapid response. If you are connected to the Internet, you can:

- find answers to resolved problems in the FAQ database. Search by product, category, or phrase
- report problems to Axis support staff by logging in to your private support area
- chat with Axis support staff
- visit Axis Support at www.axis.com/techsup/

Learn More!

Visit Axis learning center www.axis.com/academy/ for useful trainings, webinars, tutorials and guides.

Safety Information

Read through this Installation Guide carefully before installing the product. Keep the Installation Guide for future reference.

Hazard Levels

▲DANGER

Indicates a hazardous situation which, if not avoided, will result in death or serious injury.

▲WARNING

Indicates a hazardous situation which, if not avoided, could result in death or serious injury.

▲CAUTION

Indicates a hazardous situation which, if not avoided, could result in minor or moderate injury.

NOTICE

Indicates a situation which, if not avoided, could result in damage to property.

Other Message Levels

Important

Indicates significant information which is essential for the product to function correctly.

Note

Indicates useful information which helps in getting the most out of the product.

Safety Instructions

⚠WARNING

- The Axis product shall be installed by a trained professional.

NOTICE

- The Axis product shall be used in compliance with local laws and regulations.
- Store the Axis product in a dry and ventilated environment.
- Avoid exposing the Axis product to shocks or heavy pressure.
- Avoid exposing the Axis product to vibration.
- Do not install the product on unstable brackets, surfaces or walls.
- Do not install the product on vibrating brackets, surfaces or walls.
- Use only applicable tools when installing the Axis product. Using excessive force with power tools could cause damage to the product.
- Use only accessories that comply with technical specification of the product. These can be provided by Axis or a third party.
- Use only spare parts provided by or recommended by Axis.
- Do not attempt to repair the product by yourself. Contact Axis support or your Axis reseller for service matters.

Transportation

NOTICE

- When transporting the Axis product, use the original packaging or equivalent to prevent damage to the product.

Installation Guide

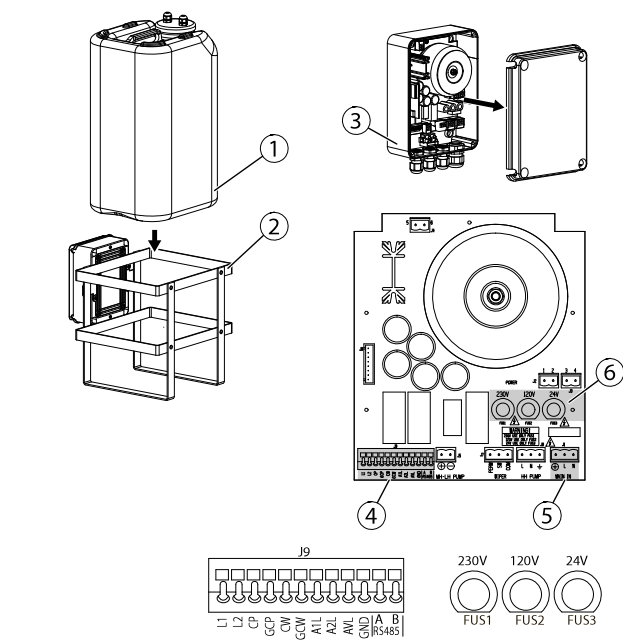
This Installation Guide provides instructions for installing AXIS Washer Kit A.

Package Contents

- Washer Kit
- Strap
- Silicon sheath
- Pipe connector
- Washer pipe support
- Locking bracket for pipe support
- Delivery pipe
- Washer pipe (with nozzle)
- Bolts
- Screws
- Printed materials
 - Installation Guide (this document)

AXIS Washer Kit A

Hardware Overview



- 1 Tank
- 2 Metal cage
- 3 Connection box
- 4 Control terminal J9
- 5 Power supply terminal
- 6 Fuse positions

Specifications

Operating Conditions

Maximum temperature	Minimum temperature Antifreeze liquid in solution (full performance)	Minimum temperature Antifreeze liquid in solution (reduced performance)
60°C (140°F)	-10°C (14°F)	-25°C (-13°F)

Approvals

Approvals	EN 50130-4 EN 61000-6-3 FCC Part 15 Subpart B Class B EN 60950-1 EN 60950-22 EN 60529 IP56 EAC certification
-----------	--

Power Consumption

AC	Current Consumption	Power Line Frequency
230 VAC	0.3 A	50/60 Hz
120 VAC	0.6 A	50/60 Hz
24 VAC	1.8 A	50/60 Hz

ENGLISH

Power Supply

AXIS Washer Kit A can be powered with three different power supply voltages:

- 230V
- 120V
- 24V

Fuses

AXIS Washer Kit A comes with a pre-mounted fuse for 230V in position FUS1. If the power supply is different, remove the fuse from position FUS1 and insert it in correct position (FUS2 or FUS3). See table.

⚠CAUTION

- Electrical connections must be performed with the power supply disconnected and the circuit-breaker open.
- When commencing installation make sure that the specifications for the power supply correspond with those required by the device.

Voltage	Fuse holder
230 VAC	FUS1 (pre-mounted)
120 VAC	FUS2
24 VAC	FUS3

See *Hardware Overview* for fuse positions.

NOTICE

- Make sure that the power source and connecting cables are suitable for the power consumption of the system.
- Use a power cable that is suitable for outdoor use.

Install the Hardware

Installing the Pump Tank

1. Attach the metal cage to a wall using the holes provided.
2. Take the plug out of the tank, along with any pumps and level gauges.
3. Remove the tank from the metal cage.

See *Hardware Overview* for images.

⚠CAUTION

Before starting any operation, make sure the power supply is disconnected.

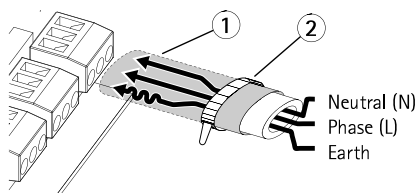
NOTICE

- It is recommended to fill the tank with water at room temperature. If using the pump at temperatures below 3°C (37.4°F) add some glass cleaner antifreeze liquid to the water. Any standard antifreeze liquid can be used.
- The antifreeze liquid will cause irreparable damage to the germanium windows. Do not use antifreeze liquid for this type of windows. For germanium windows use ethyl alcohol in a 20% solution instead.
- The product must be fastened with suitable equipment. The fastening means must guarantee the mechanical seal when a force equal to at least 3 times the weight of the device is applied.

Power Supply Connection

Connect the power supply terminal J1 to the electric network using a suitably sectioned cable. See *Hardware Overview* for location of the Connection board.

Cover the power supply cable with the supplied silicone sheath and fasten with a strap, see image below.



- 1 Silicone sheath
- 2 Strap

NOTICE

- The Earth cable should be about 10mm longer than the other two, so that it will not be disconnected accidentally if pulled.
- All the conductors of terminals must be separated from the other low voltage circuits. The disconnection of a wire must not compromise the protection against electric shocks.

Pump Connection

Connect the Pan & Tilt to the J9 terminal as described in the table below.

Terminal	Description	Q86 Camera
CP	Pump control	O1
GCP	GND (pump control)	C1

Note

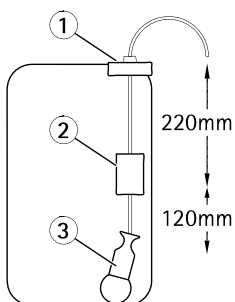
All connections of terminal J9 must have a very low safety voltage.

Pump Installation

Fill the tank with water and insert it in the metal cage, see *Hardware Overview*

Put the pump and float inside the tank and screw the plug on, see image below.

AXIS Washer Kit A

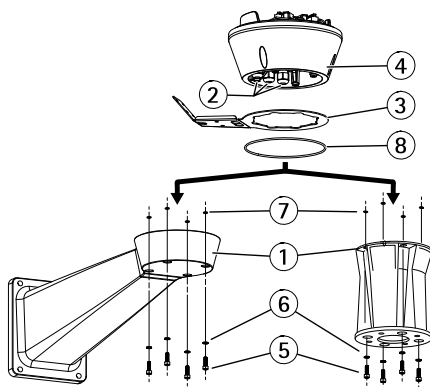


- 1 Plug
- 2 Float
- 3 Pump

NOTICE

Do not to start the pump when the tank is empty.

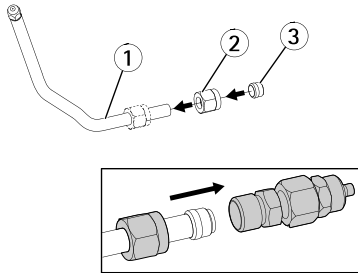
Washer Installation



- 1 Support unit
- 2 Cable glands
- 3 Washer pipe support
- 4 Base unit

- 5 Screws
- 6 Washers
- 7 Screw gaskets
- 8 Gasket

Fastening the support unit, place the washer pipe support in the desired position. Insert the cables inside the support so that they protrude by about 50cm. Insert the cable in the cable glands. Keeping the base unit at about 20cm (7.9in) from the support unit, lock the cable glands. Set the base unit up on the stand arranging the cables inside. Attach the base unit to the support unit by using the provided screws, washers, screw gaskets and gasket.



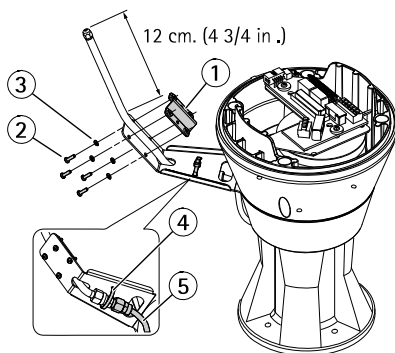
- 1 Washer pipe
- 2 Nut
- 3 Ogive

Cut the cables to size and either restore or make the connections to the positioning unit. Shorten the washer pipe as needed. Unscrew the nut and slide it along the pipe. Insert the end of the pipe into the ogive. Lock the nut to the coupling.

Note

Make sure the washer pipe is securely tightened to prevent water leakage. In case of water leakage, further tightening will be required.

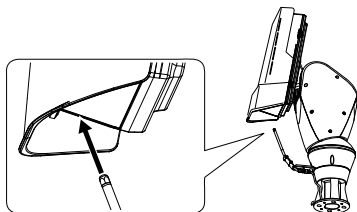
AXIS Washer Kit A



- 1 Bracket
- 2 Screws
- 3 Washers
- 4 Hoseclip
- 5 Delivery hose

Attach the pipe to the washer support by using the supplied bracket, screws and washers. Lock the coupling using the supplied hoseclip and connect the delivery hose.

To calibrate the jet, direct the nozzle towards the glass of the housing. See image below



Further Information

For the latest version of this document, see www.axis.com

Visit Axis learning center www.axis.com/academy for useful trainings, webinars, tutorials and guides.

Warranty Information

For information about Axis' product warranty and thereto related information, see www.axis.com/warranty/

