

A solid yellow vertical rectangular bar.

Quick Start Guide

Wireless AC600 Dual-Band USB Mini Adapter

GWU635

PART NO. Q1318

- 1 x GWU635 Wireless AC600 Dual-Band USB Mini Adapter
- 1 x Driver Installation CD
- 1 x Quick Start Guide
- 1 x Warranty Card

System Requirements

Operating System

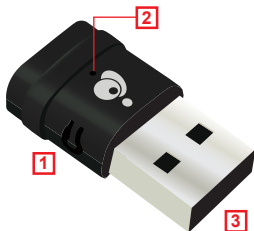
- Windows Vista®, Windows® 7, Windows® 8, Windows® 8.1

Hardware

- USB Port

Overview

1. WPS Button
2. LED Status Indicator
 - a. Off – Wireless LAN Adapter is not active
 - b. On – Wireless LAN Adapter is active
3. USB Connector



Note: Do NOT insert the Wireless USB Mini Adapter until prompted to do so.

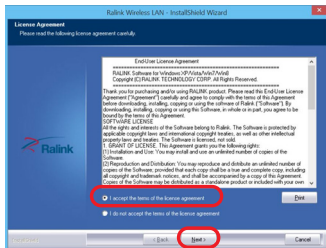
1. Insert the driver installation CD into the Disc Drive.



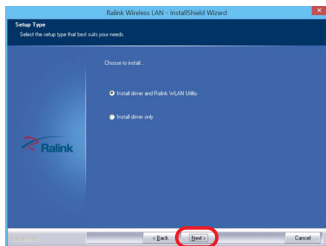
2. Select the USB 802.11AC Adapter from the listed options. Then select the operating system type to proceed.



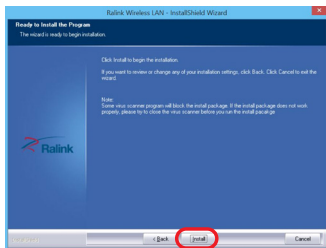
3. The installation wizard will open. Read through the license agreement and select **"I accept the terms of the license agreement."** Click the **Next** button to continue.



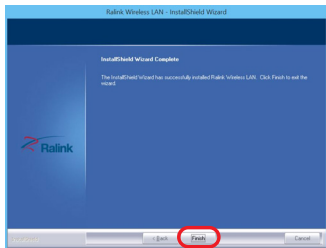
4. Two installation options will be available: **Install driver and WLAN Utility** or **Install driver only**. This Quick Start Guide will cover the steps for installing the driver and WLAN Utility. Select **Install driver and WLAN Utility** and click **Next**.



5. Click **Install** to begin installation.



6. Click **Finish** to complete and exit the installation wizard.



1. After the installation is complete, insert the GWU635 Wireless AC600 Dual-Band USB Mini Adapter into an available USB port.



2. A new icon will appear in your system tray after the installation of the wireless utility is completed. If the new icon does not appear, click the arrow button in the system tray to display hidden icons.



Wireless utility running, GWU635 is not connected to the computer




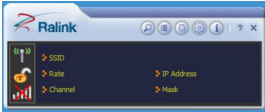
Wireless utility running, GWU635 is connected to the computer with no active network connection.



Wireless utility running, GWU635 is connected to the computer with an active network connection.

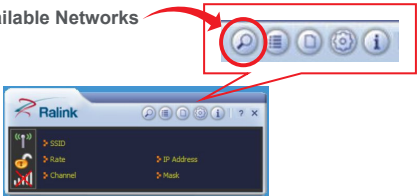
Connect to a Wireless Network

1. Double-click the wireless utility icon  in the system tray to launch the Wireless LAN utility.

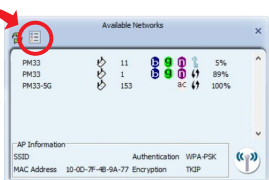


2. Click the **Available Networks** button to search and list the available wireless networks. Select the desired network and click the **Add to Profile** button.

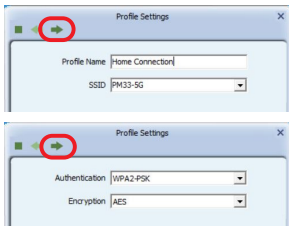
Available Networks



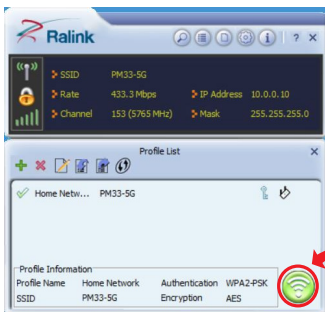
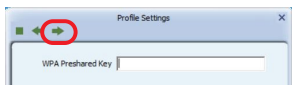
Add to Profile



3. Create a Profile Name and click the Right Arrow to continue. If the desired network requires a password to connect, select the authentication and encryption type from the drop down menus. Next, click the Right Arrow to enter the pre-shared network key.



4. Enter the network key and click the Right Arrow. The Pre-logon connection window will appear, click the right arrow to continue. The Profile List window will appear with the newly created profile. Select the profile and click the **Connect** button to activate your network connection. Once connected, the Wireless Utility will display the network information associated with your wireless router / AP.



Connect

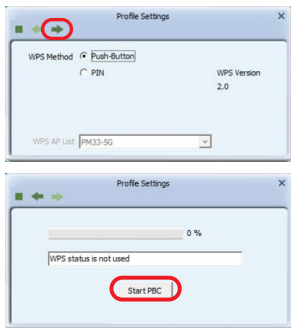
Wi-Fi Protected Setup (WPS) is a simple and secure way to connect to an existing network. Before starting, make sure your wireless router / Access Point (AP) supports WPS. This optional certification feature provides two connection methods: **Push-Button Configuration (PBC)** or **PIN Input Configuration (PIN)**.

Option 1: Push Button Configuration (PCB) Method:

1. Press and hold the WPS button on the side of the GWU635 adapter for 5 seconds or within the Wireless Utility on your PC, click **Profile Settings**, then select **Add WPS profile**.



2. Next, select the **Push-Button** option and click the Right Arrow to proceed. Click the **Start PCB** button to begin scanning for the WPS router / AP.



3. Next, press the physical WPS button on your wireless router / AP or open the configuration software for your wireless router / AP and select the WPS Client set-up option. Select the Push-Button configuration method and click the virtual button on the WPS configuration page of the wireless router / AP configuration software. The WPS client setup screen will vary depending on router / AP.

Add WPS Client

Select a setup method:

- ☒ Push Button (recommended)

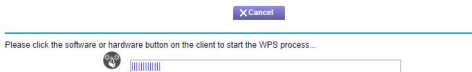
You can either press the physical push button on the router or click the button (soft push button) in this screen.



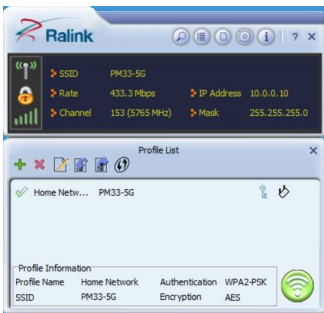
- ☐ PIN Number

4. Allow the wireless adapter to configure to the security settings of your wireless router / AP. The WPS client screen will vary depending on router / AP.

Connecting to New Wireless Client

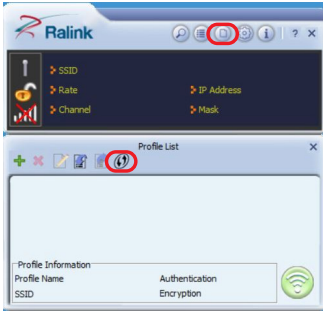


5. Once complete, your computer will be connected to the wireless network and the Wireless Utility will display the network information associated with your wireless router / AP.

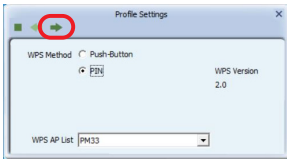


Option 2: PIN Input Configuration (PIN) Method:

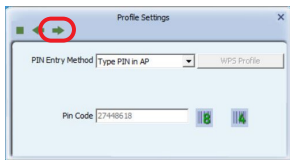
1. Open the Wireless Utility on your computer and click **Profile Settings**. Click the **Add WPS profile** button.



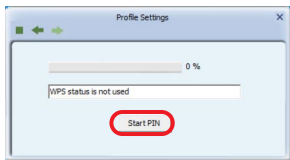
2. Select the PIN option and choose the WPS wireless router / AP you wish to connect to from the drop down menu. Click the Right Arrow button to proceed.



3. Select Type PIN in AP from the PIN entry Method drop down menu. The Pin Code box will have a pre-generated PIN that will be used to connect to the wireless adapter to the router /AP, keep this code for use in wireless router / AP software setup. Click the Right Arrow button to proceed.



4. Click **Start Pin** to begin the pairing process.



5. Open the configuration software for your wireless router / AP and select the WPS Client set-up option. Select the PIN configuration method and enter the pre-generated key from the Wireless Utility software.

Add WPS Client

Select a setup method.:

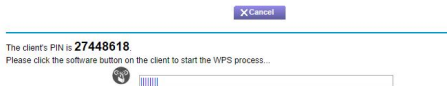
- ☐ Push Button (recommended)
☒ PIN Number

This is the security PIN of the WPS client. While connecting, WPS-enabled adapters provide a randomly-generated security PIN.

Enter Client's PIN:

6. Allow the wireless adapter to configure to the security settings of your wireless router / AP. The WPS client setup screen will vary depending on your router / AP.

Connecting to New Wireless Client



7. Once complete, your computer will be connected to the wireless network and the Wireless Utility will display the network information associated with your wireless router / AP.



Compliance Information

FCC Statement

This equipment has been tested and found to comply with the limits for a Class B digital device, pursuant to Part 15 of the FCC Rules. These limits are designed to provide reasonable protection against harmful interference in a residential setting. This product generates, uses, and can radiate radio frequency energy and, if not installed and used as directed, it may cause harmful interference to radio communications.

CE Compliance

This device has been tested and found to comply with the following European Union directives: Electromagnetic Capability (2004/108/EC), Low Voltage (2006/95/EC) and R&TTED (1999/5/EC).

Limited Warranty

**WE'RE HERE TO HELP YOU!
NEED ASSISTANCE SETTING UP THIS PRODUCT?**

Make sure you:

1. Visit www.iogear.com for more product information
2. Visit www.iogear.com/support for live help and product support

Warranty Information

This product carries a 1 Year Limited Warranty.
For the terms and conditions of this warranty, please go to
<http://www.iogear.com/support/warranty>

Register online at <http://www.iogear.com/register>

Important Product Information

Product Model _____

Serial Number _____

Contact

iogear.custhelp.com

support@iogear.com

www.iogear.com

19641 Da Vinci,
Foothill Ranch, CA 92610