

LEXIBOOK[®]

Laptop Master



www.lexibook.com

Instruction manual

LEXIBOOK[®]
MFC110GB

CONTENTS

Introduction.....	3
Safety instructions.....	4
Important safety instructions.....	4
Start-up guide.....	5
Getting to know your laptop.....	7
Unpacking the device	9
Installation.....	9
Charging and using the built-in lithium battery.....	10
Turning your MFC110GB on and off.....	11
Using the Touch Pad.....	12
Desktop icons.....	12
PDF Reader.....	18
Printer settings.....	18
USB connection.....	18
Internet connection.....	19
Wi-Fi connection	20
Internet Security	21
Email application.....	22
SD card reader.....	22
Resetting the system.....	23
Troubleshooting.....	23
Specifications.....	24
Maintenance.....	25
Warranty.....	25
EC Declaration of conformity.....	26

INTRODUCTION

Thank you for purchasing this Lexibook Laptop Master MFC110GB. The Lexibook Laptop Master is more than an educative tool, specially designed for children age 6 and up. It is also a complete laptop with many applications: Word Processor to type reports or essays, integrated mailbox software to send and receive e-mails, Internet Explorer for browsing the net for school projects... Everything students need to learn, progress and acquire a useful knowledge of the digital world!

It is strongly recommended that you read the following instructions to find all the necessary information regarding the functions of the Lexibook Laptop Master. Please take note of all the enclosed instructions and safety precautions.

SAFETY INSTRUCTIONS



CAUTION

**RISK OF ELECTRIC SHOCK
DO NOT OPEN**



CAUTION: TO REDUCE THE RISK OF ELECTRIC SHOCK. DO NOT REMOVE COVER (OR BACK). NO USER SERVICEABLE PARTS INSIDE. REFER SERVICING TO QUALIFIED SERVICE PERSONNEL.

The graphic symbols on the back cover of the set mean the following:



The lightning flash with arrowhead symbol within an equilateral triangle is intended to alert the user to the presence of uninsulated “dangerous voltage” within the product’s enclosure that may be of sufficient magnitude to constitute a risk of electric shock to persons.



The exclamation point within an equilateral triangle is intended to alert the user to the presence of important operating and maintenance (servicing) instructions in the literature accompanying the appliance.

WARNING:

- To reduce the risk of fire or electric shock, do not expose this appliance to rain or moisture.
- The apparatus shall not be exposed to dripping or splashing and no objects filled with liquids, such as vases, shall be placed on the apparatus.
- The mains plug is used as the disconnect device, the disconnect device shall remain readily operable.
- In order to disconnect the apparatus from the mains completely, the mains plug should be disconnected from the mains socket outlet completely.

IMPORTANT SAFETY INSTRUCTIONS

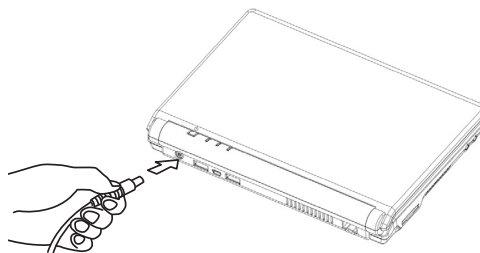
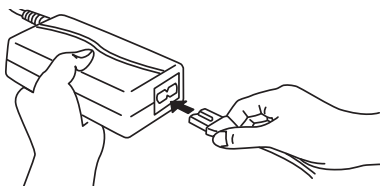
WARNING: THIS PRODUCT IS NOT A TOY, ADULT SUPERVISION IS RECOMMENDED.

1. Read these instructions.
2. Keep these instructions.
3. Heed all warnings.
4. Follow all instructions.
5. Do not use the product on your lap for more than 30 minutes, with at least a 5 minutes break.
6. Do not use this unit near water.
7. Clean only with a dry cloth.

8. Do not block any ventilation openings. Install in accordance with manufacturer's instructions.
9. To avoid overheating, do not leave the product in a non-ventilated space (e.g.: a schoolbag) when it is turned on.
10. Do not install near any heat sources such as radiators, heat registers, stoves or other apparatus (including amplifiers) that produce heat.
11. Do not defeat the safety purpose of the polarized or grounding-type plug. A polarized plug has two blades with one wider than the other. A grounding-type plug has two blades and a third grounding prong. The wide blade or the third prong is provided for your safety. If the provided plug does not fit into your outlet, consult an electrician for replacement of the obsolete outlet.
12. Protect the power cord from being walked on or pinched particularly at plugs, convenience receptacles, and the point where they exit from the unit.
13. Only use attachments/ accessories specified by the manufacturer.
14. Unplug this unit during lightning storms or when unused for long periods of time.
15. Refer all servicing to qualified service personnel. Servicing is required when the unit has been damaged in any way, such as the following: the power-supply cord or plug has been damaged; liquid has been spilled or objects have fallen into the unit; and/or the unit has been exposed to rain or moisture, does not operate normally, has changed its performance or has been dropped.
16. Do not overload wall outlet. Use only power source as indicated.
17. Use replacement parts as specified by the manufacturer.
18. Upon completion of any service or repairs to this product, ask the service technician to perform safety checks.

START-UP GUIDE

1



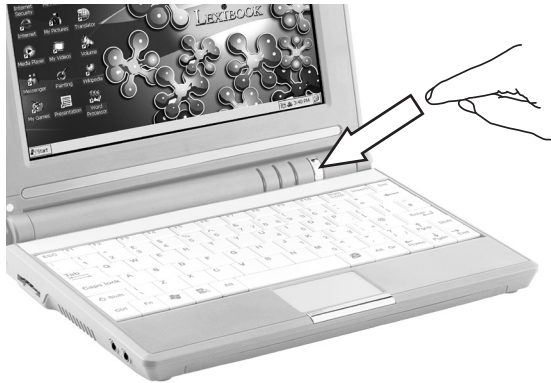
1. Connect the power cord to the AC adapter.
2. Connect the AC adaptor's DC output plug to the DC IN port on the back side of the computer.
3. Plug the power cord into a wall outlet. The battery charge indicator on the front of the computer should glow.

2



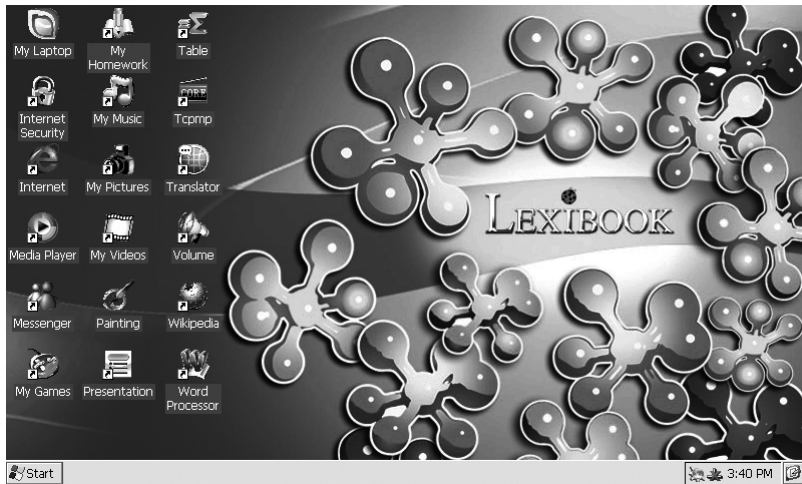
Lift up the LCD screen to open it.

3



Press the power button to turn on your laptop.

4

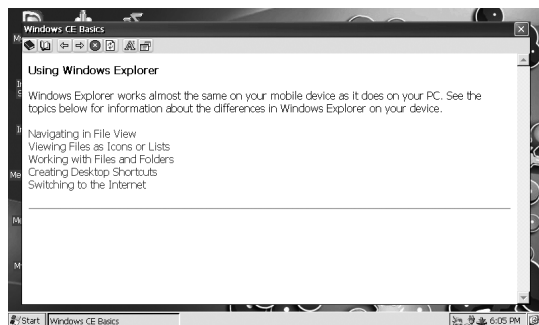


Windows® CE starts automatically and after a few seconds, the desktop is displayed on screen.

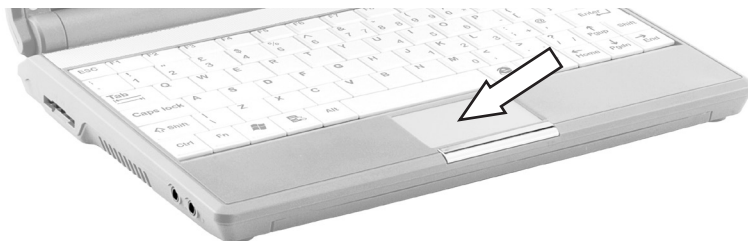
For detailed information about how to use the basic functions of Microsoft® Windows® CE, use the integrated help function:

1. Click on "Start", then "Help" and click on "Windows CE Basics".
2. Browse through the topics available to learn how to use Windows® CE.

Note: You can also press the F1 key while the desktop is displayed or when using Windows Explorer to open the "Help" dialog box.

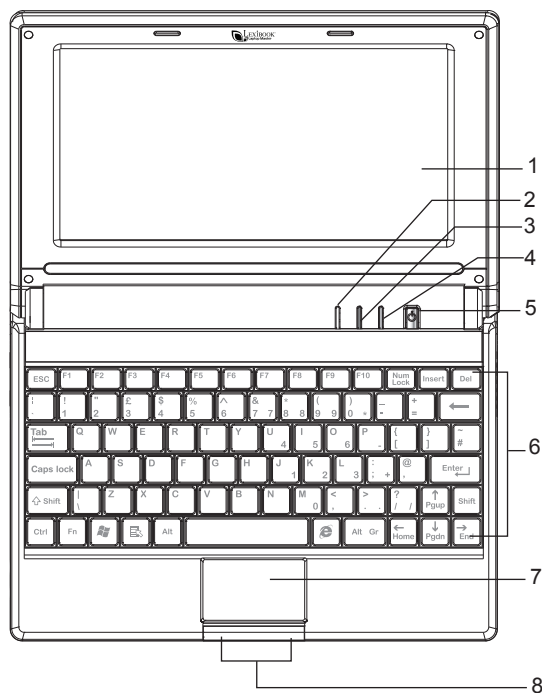


5



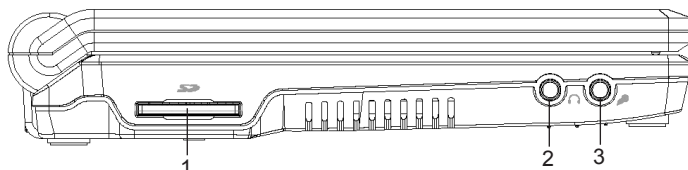
Use the Touch Pad or a mouse (not included) to double-click on the desired icons and launch the applications (for detailed information about the Touch Pad, refer to the "Using the Touch Pad" section, p.12).

GETTING TO KNOW YOUR LAPTOP



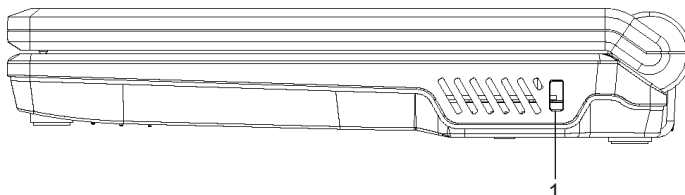
1. **LCD screen**
2. **Battery charge indicator (red)**: lights up steadily when the AC adapter is plugged.
3. **Operating system indicator (orange)**: indicates that the system is working.
4. **Caps Lock indicator (green)**: indicates when the caps lock function is turned on or off.
5. **Power ON/ Power OFF button**: press to turn the laptop on. Press and hold for about 5 seconds to turn off the unit manually.
6. **Keyboard**
7. **Touch Pad**: the Touch Pad is a built-in pointing device with functions similar to a mouse.
8. **Touch Pad button**: works like the two right and left buttons of an ordinary mouse.

Left side



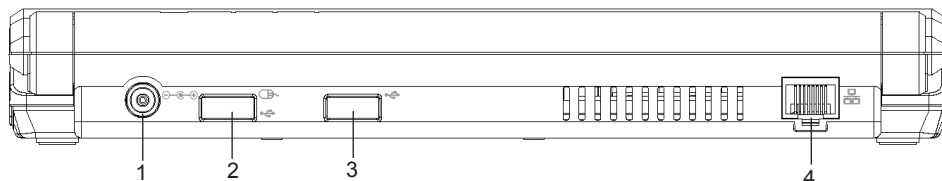
1. **SD card reader:** supports SD card up to 16GB.
2. **Headphone Jack:** the headphone jack (3.5 mm diameter) is where you connect the headphones or external speakers.
3. **Microphone jack:** the microphone jack (3.5 mm diameter) is where you connect a microphone.

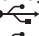
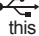
Right side



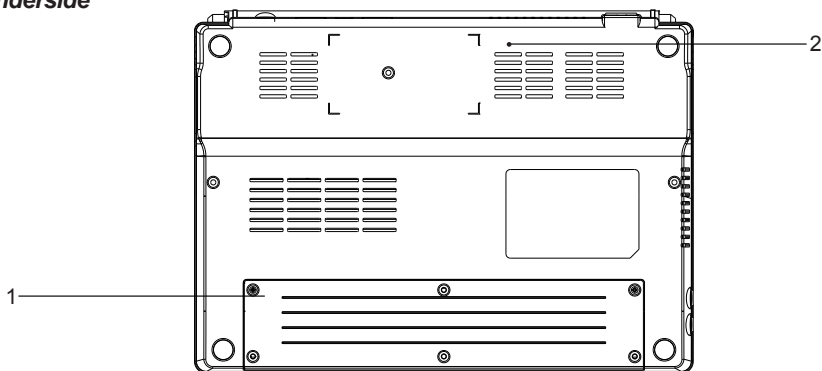
1. **Kensington lock:** this slot allows you to connect an optional security cable (not included) and anchor the computer to a desk or other large object to deter theft.

Back side



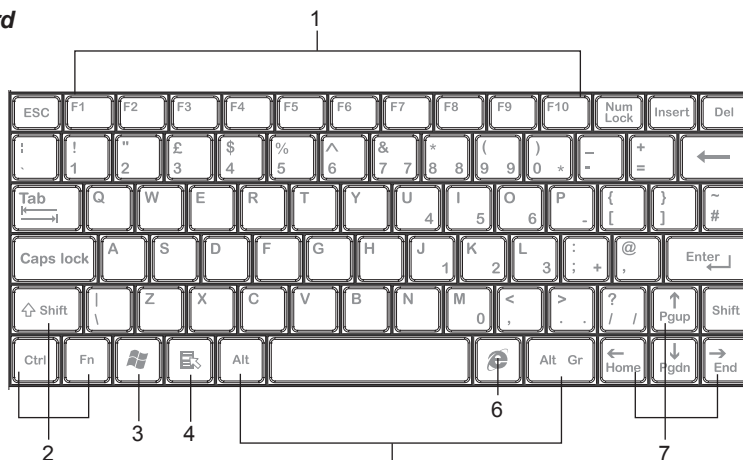
1. **DC IN 9.8V :** the AC adaptor connects to this socket. Use only the AC adaptor supplied with the laptop. Using the wrong adaptor can damage the product.
2. **USB port**  : use this port to connect a USB mouse, a USB key or a printer (not included).
3. **USB port**  : use this port to connect a USB mouse, a USB key or a printer (not included).
4. **LAN jack :** this jack allows you to connect to a Ethernet cable.



Underside



1. **Lithium battery compartment:** the integrated lithium battery powers the computer when the AC adaptor is not connected (for more details about how to use properly the battery, refer to the "Charging and using the built-in lithium battery" section, p.10).
2. **Reset button:** if the unit malfunctions press this button to reset the system (refer to the "Resetting the system" section p.23).

Keyboard



1. Function keys
2. Control keys
3. Windows "Start" menu key  : press this key to open the Windows "Start" menu.
4. "Context" key  : this key has the same function as the right mouse button.
5. Alt keys
6. Internet Explorer access key: press this key to launch the Internet Explorer program.
7. Direction keys

UNPACKING THE DEVICE

When unpacking, ensure that the following elements are included:

- 1 x Lexibook Laptop Master MFC110GB
- 1 x power cord
- 1 x AC/DC adapter
- 1 x instruction manual

WARNING: All packaging materials, such as tape, plastic sheets, wire ties and tags are not part of this laptop and should be discarded.

INSTALLATION

Mouse connection

You can use one of the USB port on the back of the laptop to plug in a mouse (reference MFA10, sold separately).

Headphones connection

On the left side of the unit is a headphones socket, suitable for any normal earphones fitted with a 3.5mm jack plug. When the headphones are in use, the speakers are turned off.

CAUTION: too high volume, especially when using headphones, can damage your hearing. For this reason, please turn the volume down before connecting the headphones.

Power connection

Use the AC/DC adapter (AC 100V- 240V~ 50/60Hz) provided with the unit to connect the computer to a main socket.

Note:

- Only use the unit in combination with the adapter supplied. Do not use a different adapter to power the computer.
- Whenever possible, keep the AC adapter plugged into the laptop and an electrical outlet to recharge the battery.
- Never turn off or reset your Lexibook Laptop Master while the hard disk is in use, doing so can result in loss or destruction of your data. Always wait at least 5 seconds after turning off the laptop before turning it back on. Turning the power on and off in rapid succession can damage the unit's electrical circuitry.
- The socket-outlet shall be installed near the equipment and shall be easily accessible.

Please switch off the MFC110GB before connecting the computer to a main socket. Before using this product for the first time, please remove the static label from the LCD screen.

CHARGING AND USING THE BUILT-IN LITHIUM BATTERY

The Lexibook Laptop Master is equipped with a built-in rechargeable lithium battery that provides power when you don't have access to an AC outlet. The battery life is approximately 3 hours.

IMPORTANT: The battery must be charged for at least 4 hours before using it for the first time.

Charging the battery and charging time

To charge the battery, plug the AC adapter into the laptop and an electrical outlet.

For a totally discharged battery, it will take approximately 4 hours to charge to 100% capacity while the Lexibook Laptop Master is powered off. It will take about 5 hours to charge the battery to 100% capacity while the unit is powered on. The battery charge indicator lights up steadily during the charge.

Note:

- The battery life may vary based on usage patterns of the computer.
- Do not expose the battery to temperatures below 0°C (32°F) or above 60°C (140°F). This may adversely affect the battery pack.

Checking the remaining power

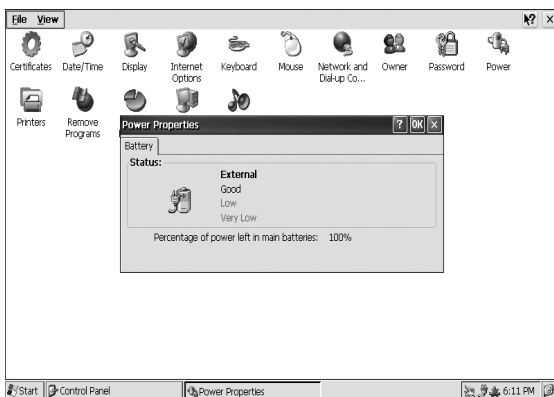
1. To access the "Power Properties" menu, click the "Start" button, then select "Settings" and

click "Control Panel".

2. Double-click the "Power" option to open the power configuration dialogue box and check the remaining power.

Note:

- the unit will automatically shut down a few minutes after a battery warning message has been displayed.
- when the Lexibook Laptop Master is connected to an AC outlet, you can also double-click the battery icon in the task bar on the lower right corner of the screen to open the power configuration dialogue box.



The lithium battery is intended to use only with this laptop. Do not disassemble the battery. Do not dispose of the battery in fire or water. To avoid risk of fire, burns, or damage to your battery, do not allow a metal object to touch the battery contacts. Handle a damaged or leaking battery with extreme care. If you come in contact with the electrolyte, wash the exposed area with soap and water. If it contacts the eye, flush the eye with water for 15 minutes and seek medical attention. Do not charge the lithium battery pack if the ambient temperature exceeds 45°C (113°F). To obtain a replacement battery, contact your local dealer. Do not expose the battery to high storage temperatures (above 60°C, 140°F). When discarding a battery pack, contact your local waste disposal provider regarding local restrictions on the disposal or recycling of batteries. Use only supplied AC Adapter for charging.

WARNING: Danger of explosion if battery is incorrectly replaced. Replace only with same or equivalent type recommended by the manufacturer. Discard used batteries according to the manufacturer's instructions or local laws.

WARNING: Mal-function or loss of memory may be caused by strong frequency interference or electrostatic discharge. Should any abnormal function occur, reset the unit or unplug the AC/DC adapter from the mains socket and re-plug it again.

TURNING YOUR MFC110GB ON AND OFF

Turning on the unit

Press the power button to turn on your laptop. Windows® CE will start automatically.

Turning off the unit

1. To turn the Lexibook Laptop Master off, save your work and close all open applications, click on "Start", then "Shut down" and select "Shut down".

2. Or press and hold the power button for 4-6 seconds.



USING THE TOUCH PAD

The Touch Pad is a rectangular electronic panel located just below your keyboard. To use the Touch Pad, simply touch and move your finger tip across it in the direction you want the cursor to go. The button located below the Touch Pad can be used like the left and right buttons on a mouse.

NOTE: You can also tap the Touch Pad to perform functions similar to those of the left button.

- **Click:** Tap the Touch Pad once.
- **Double click:** Tap twice.
- **Drag and drop:** Tap to select the material you want to move. Leave your finger on the Touch Pad after the second tap and move the material.

Touch Pad care

The Touch Pad is a pressure sensitive device. Please take note of the following precautions.

- Make sure the Touch Pad does not come into contact with dirt, liquids or grease.
- Do not touch the Touch Pad if your fingers are dirty.
- Do not rest heavy objects on the Touch Pad or the Touch Pad buttons.
- You can use the Touch Pad with Microsoft Windows® as well as non-Windows® applications.
- The Touch Pad might become unresponsive, in this case restart or reset the unit.

DESKTOP ICONS

Windows® Explorer






To display topics about how to use the Windows® Explorer application and navigate in the folders and files of the Lexibook Laptop Master:


1. Press F1 or click “Start”, then “Help” and select “Windows CE Basics”.
2. Browse through the topics available and select “Using Windows Explorer”.



My Laptop

Double-click this icon to access the hard drive of the Lexibook Laptop Master and the connected devices.

- The “C” hard drive  contains all the programs and applications.
- The “Network”, “Temp” and “Windows”    folders contain programs, files and applications ensuring that your system operates correctly. You do not need to modify them.
- The “USB Disk” drive icon  appears when you insert a USB key into one of the USB ports at the back of the laptop. Double-click the icon to display the files stored on the USB key (refer to the “USB Connection” section p.18).


• The “SD” drive icon  appears when you insert a SD card into the corresponding slot of the laptop. Double-click the icon to display the files stored on the SD card (refer to the “SD Card Reader” section p. 22).

Note: For detailed information about the navigation with Windows Explorer, press the F1 button while the application is running to display an onscreen help menu.



Internet Explorer

Double-click this icon to launch the Internet Explorer application.

This famous web browser allows you to surf the Internet. You can also use the Internet Explorer access key to launch this application directly .

Note:

- For detailed information about the navigation with Internet Explorer, press the F1 button while the application is running to display an onscreen help menu.
- Due to system restrictions, some websites with a lot of content and streaming video such as “You Tube” or “Daily Motion” might not operate properly or might not open at all.

WARNING:

- Some online email services might not work properly with this application.
- This version of Internet Explorer is not compatible with websites using Adobe Flash Player 7 or higher.



Internet Security

Double-click this icon to launch the Windows CE Remote Management Tool and setup the parental control.

Parents can use the available options to set time and URL restrictions. The Lexibook Laptop Master is provided with a default list of 100 “forbidden” words, blocking access to websites with contents unsuitable for children.

Note: For detailed information about the Internet security features, refer to the “Internet Security” section, p.21.



Media Player

Double-click this icon to launch the Windows® Media 9 Series software.

This application allows you to view video files in WMV format and listen to audio files in MP3 format.

Note: For additional information about media player, refer to the “My Music” section, p.14.



Messenger

Double-click this icon to launch the Messenger application.

The instant messaging client to communicate online with your friends.



My Games

Double-click this icon to play the Windows and Flash games preloaded in the system.

There are 50 games available divided in several categories: puzzle games, memory games, logic games, strategy games and 2 Windows games.

Follow the instructions on-screen at the beginning of the games to learn how to play.

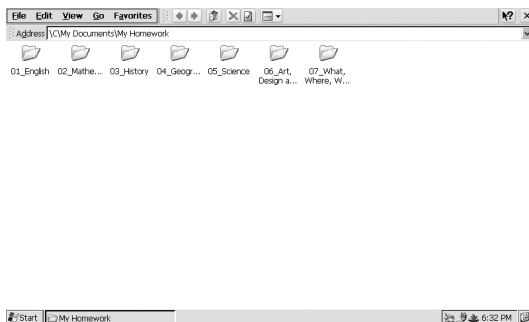


My Homework

Double-click this icon to open the “My Homework” folder. This folder contains hundreds of educational memos and activities covering several school topics, tricks for memorising the 9 times table, dictations in audio format, scientific experiments to perform at home and important historical dates. You can save the presentations, tables and essays files created with the “Presentation”, “Table” and “Word processor” applications in this folder.

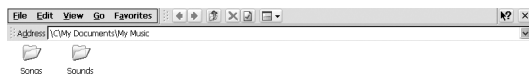
Note: For detailed information about the “Presentation”, “Table” and “Word processor” applications, refer to the corresponding sections, p.16.

WARNING: As deleted files cannot be restored, make sure to avoid accidental deletion of the memos.



My Music

Double-click this icon to open the “My Music” folder. You can save audio files in this folder.



To listen to audio files stored in the “My Music” folder

1. Double-click the “My Music” icon. The contents of the folder will be displayed.
2. Double-click the desired audio file to play it with the media player.



To create a playlist

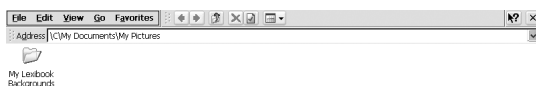
1. Double-click the “Media Player” icon on the desktop to launch the media player application.
2. Click the “File” option, then select “Playlists” from the drop-down menu.
3. Click the “Local Content” option, then select “Organize Playlists” from the drop-down menu.
4. On the next screen, click “New” and enter a name for the playlist. Press “Enter” to confirm.
5. Click “OK”. A window with a list of audio files will be displayed on screen.
6. Select the files you want to add to the playlist by ticking them, then click “OK”.

7. The new playlist will be displayed on the next screen. Click the “+” icon in the lower part of the window to add other files or click the “PLAY” icon.
8. The media player will automatically play the selected files one by one.



My Pictures

Double-click this icon to open the “My Pictures” folder. You can save picture files in this folder.



To view picture files stored in the “My Pictures” folder

1. Double-click the “My Pictures” icon. The contents of the folder will be displayed.
2. Double-click the desired picture file to view it with the “Image Viewer” application.



My Videos

Double-click this icon to open the “My Videos” folder. You can save video files in this folder.

To play video files stored in the “My Videos” folder

1. Double-click the “My Videos” icon. The contents of the “My Videos” folder will be displayed.
2. Double-click the desired video file to view it with the “Tcnpmp” video player.



Painting activity

Double-click this icon to launch the “Painting” activity.

Use the painting tools and the colour palettes on the left side of the screen to colour the black and white drawing. You can also add graphic elements and choose the background picture you wish to use from a selection of 10 pictures.



Tcnpmp

“Tcnpmp” is a video player that allows you to play your videos in different screen format (4:3, 16:9, full screen...).

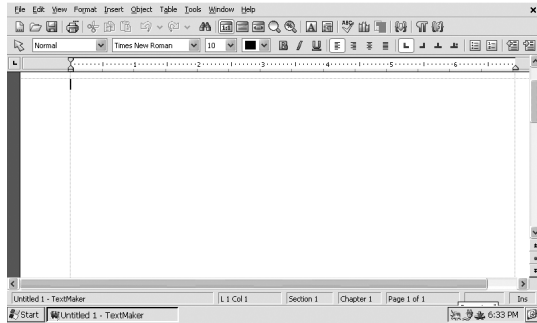
To play a video file with “Tcnpmp”:

1. Follow steps 1 and 2 of the “My Videos” section or double-click the “Tcnpmp” icon, or click “Start”, then select “Programs” and click “Tcnpmp” to launch the application.
2. To open a video file, click “File”, then the “Open file” option from the drop-down menu. Browse your folders and files and double-click the desired video file to launch the playback.
3. Click the command buttons on the top of the window to suspend/resume the playback, fast forward or stop the video. You can also turn on the full screen mode and mute or adjust the volume.



Word Processor

Double-click this icon to launch the “TextMaker” application. This reliable and friendly word processor is perfect for writing clear, direct, and interesting essays. When launching the “TextMaker” application, a registration dialog box is displayed on-screen. You can choose to register the program or skip the registration process. After you have started the program for the third time, you will be able to tick the “Do not show this dialog box again” option.

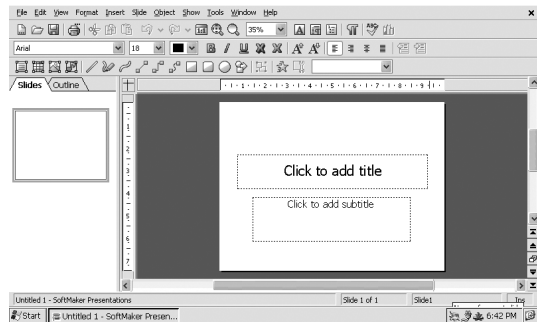


Note: For detailed information about the features of the “TextMaker” program, visit the SoftMaker website at www.softmaker.com/english/ofctm_en.htm



Presentation

Double-click this icon to launch the “SoftMaker Presentations” application. “SoftMaker Presentations” is a powerful presentation graphics program. When launching the “SoftMaker Presentations” application, a registration dialog box is displayed on-screen. You can choose to register the program or skip the registration process. After you have started the program for the third time, you will be able to tick the “Do not show this dialog box again” option.

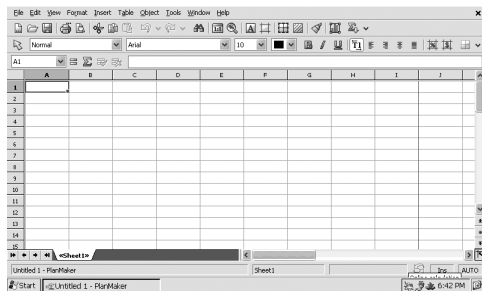


Note: For detailed information about the features of the “SoftMaker Presentations” program, visit the SoftMaker website at www.softmaker.com/english/ofcpr_en.htm



Table

Double-click this icon to launch the “PlanMaker” application. “PlanMaker” is a spreadsheet program that allows you to create easily elaborate worksheets. When launching the “PlanMaker” application, a registration dialog box is displayed on-screen. You can choose to register the program or skip the registration process. After you have started the program for the third time, you will be able to tick the “Do not show this dialog box again” option.



Note: For detailed information about the features of the “PlanMaker” program, visit the SoftMaker website at www.softmaker.com/english/ofcpm_en.htm

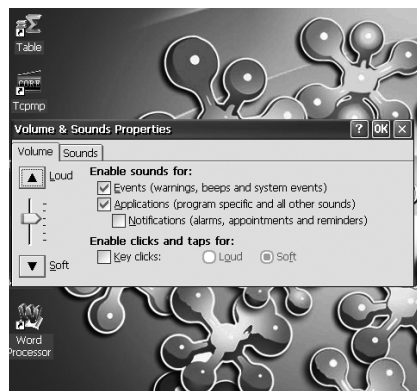
WARNING: To use one of your documents with a Microsoft Office program, you must save it in a compatible format (.doc, .xls, .ppt). Click “File”, “Save as” then select the desired format from the “Save as type” drop-down menu.



Volume

Double-click this icon to open the “Volume & Sounds Properties” dialog box.

Use the available options to adjust the volume and the sounds.



Wikipedia

Double-click this icon to go directly to the Wikipedia homepage.

Wikipedia is the biggest multilingual free-content encyclopaedia on the Internet. A useful tool for school projects.



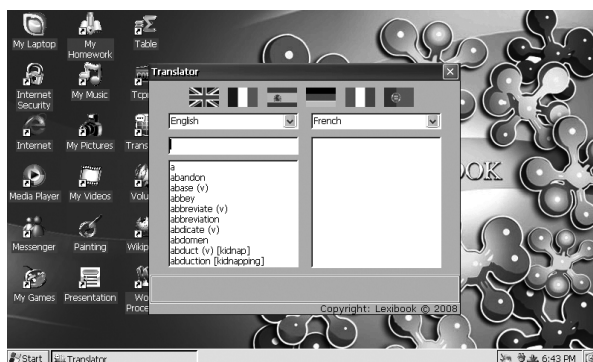
Translator

Double-click this icon to launch the “Translator” application.

The Lexibook Laptop Master integrated translator software has been designed to help you translate words in English, French, German, Spanish, Italian and Portuguese.

To perform a translation

1. Double-click the “Translator” icon.
2. Select the source language (the language you wish to translate from) and the target language (the language you wish to translate to) from the drop-down menus.
3. Enter a word. Its translation in the selected target language will be displayed automatically.



Note: If a program stops responding, you can use the “Task Manager” system utility to end the application or switch to another program. Press Ctrl+Alt+Del to launch “Task Manager”, then select the application you want to exit and click “End Task”. To switch to another program, click the program that you want to switch to, and then click “Switch To”.

PDF READER

“PDF Reader” (or “JETCET PDF”) is a very simple but complete application that allows you to open and read your PDF files.

To open a PDF file with “PDF Reader”

1. Double-click the desired PDF file to read it with the “PDF Reader” software.
2. Or, click “Start”, then select “Programs” and click “PDF Reader” to launch the application. Browse through your folders then double-click the desired PDF file to open it.

PRINTER SETTINGS


To setup your printer and use it with the Lexibook Laptop Master:

1. Use a USB cable (not included) to connect the laptop to your printer. Click “Start”, select “Settings” then click “Control Panel”.
2. Double-click the “Printers” icon. In the “Printers” window, double-click the “Add Local Printer” icon to launch the “Add Printer Wizard” assistant.
3. Follow the instructions displayed on screen. When the set up is completed, click “Finish”. Your printer is ready for use.



USB CONNECTION

Using a USB key:

1. Plug the USB key into one of the USB ports located on the back of the laptop.
2. Double-click the “My Laptop” icon, then double-click the “USB Disk” icon  that has appeared.
3. The files stored on the USB key will be displayed on screen.

Note:

• You can plug a USB key, a USB mouse or a printer in the USB ports located on the back of the unit (see p.8). Some USB devices may not be compatible.

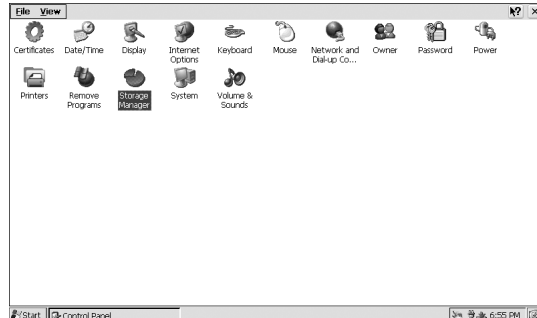
- The MFC110GB is compatible with USB 1.1 and USB 2.0 USB flash drives. However, with USB 2.0 USB flash drives, the data transfer speed will be the same as for USB 1.1 USB flash drives.

To remove the USB key safely:

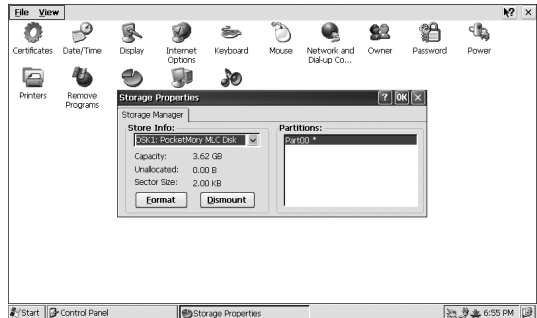
1. Click “Start”, then select “Settings” and click “Control Panel”.



2. Double-click the “Storage Manager” icon, then select the USB drive in the “Store Info” drop-down menu.

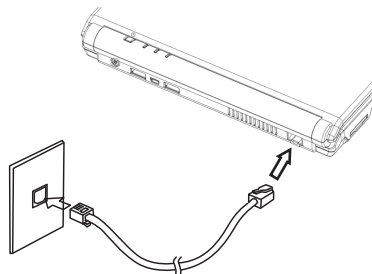


3. Click on dismount. The “USB Disk” icon disappears and the USB key can be removed safely.



INTERNET CONNECTION

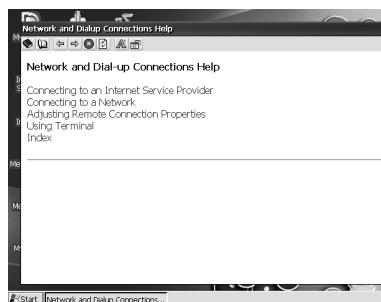
Use the Ethernet port on the back side of the unit to plug an Ethernet cable (not included) and connect the laptop to the Internet.



To set up your connection, use the integrated “Help” menu

1. Click “Start”, then select “Help”.
2. Click “Network” to display a list of help topics and follow the indications on screen to configure your Internet connection.

Note: it is also recommended to refer to the information from your Internet service provider and the instructions supplied with the network device in use.



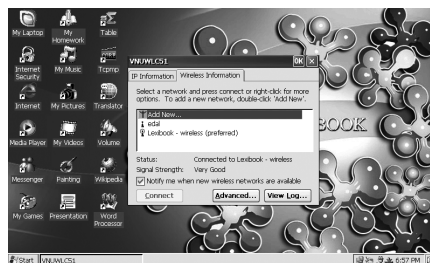
WIFI CONNECTION

With the Lexibook WiFi USB key MFA30-01 (sold separately), the MFC110GB can wirelessly access the Internet:

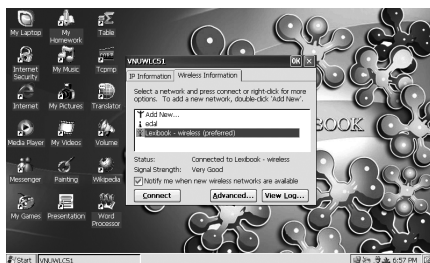
1. Plug the WiFi USB key MFA30-01 (sold separately) into one of the USB ports at the back of the laptop.

2. The wireless information menu will be displayed automatically.

Note: The wireless information dialog box is displayed automatically for the first installation and when you are not connected to the Internet. Once you have selected a wireless connection, the laptop will connect automatically to the network and if the connection is successful, this dialog box will not be displayed.



3. Click the desired network in the list of all available WiFi networks then click the “Connect” button.




4. On the “Wireless Network Properties” screen, use the different options to set the network properties (network name, WEP key settings,...). When you have finished, click “OK”.

Note: To access directly the “Wireless Network Properties” menu, you can also double-click the desired network in the list of the wireless information menu.



5. Click “Connect” again to connect to the network. You can now start surfing the Internet wirelessly.

Note:

- To surf the Internet wirelessly, you must use the Lexibook WiFi USB key. Only use this key to connect to the wireless networks.
- Double-click the Internet connection icon  in the task bar at any time to open the wireless information menu.
- When switching on or restarting your laptop, if you have difficulties connecting to a wireless network, unplug then replug the WiFi key.
- When the WiFi key is used for long periods, it can become very warm. This condition does not indicate a malfunction. Please handle carefully.
- Using the WiFi connection consumes more power than using the Ethernet connection. Recharge the battery regularly.

INTERNET SECURITY

To access the Internet security management menu

1. Double-click the “Internet Security” icon on the desktop.
2. The “Windows CE Remote Management Tool” will start and prompt you to log in.
3. Under “User Name” type “admin”, enter the default password “abcd” then click “OK”.

Note: The “Domain” field should be left empty. Do not tick the “Save password” option.

To change the password

It is strongly recommended to change the password.

1. After logging in as “admin”, click “Security” and then “Change Password”.
2. Type your old password, then your new password and retype your new password.
3. The “Management Tool” will restart and you will be prompted to login with your new password.

WARNING: It is recommended to write your password down and to keep it in a safe place. If you lose it you won’t be able to access the Internet security management menu anymore.

To set restrictions

Set time restrictions

1. Click “Parental Controls Restrictions” on the left side.
2. Select “Child” as the group for which you want to set the time restrictions.
3. Under “Schedule” select “Only allow access during the specified days and times”.
4. Choose the days and times you want to allow Internet access for the selected group.
5. Scroll down and click “Apply”.

Block list and URL filtering settings

1. The “Block access” option is the default setting. The MFC110GB is provided with a preset list of more than 100 “forbidden” words. The user will not be able to access websites which URL addresses contain the words that are on the list.
2. You can modify the existing list by editing or deleting entries.
3. You can add additional entries, making certain sites and URL addresses forbidden. Type the exact address, or part of the address into the “Type URL” field. Click “Add”.
4. If “No filtering” is selected, all websites can be accessed and the block list will not function.

5. If “Permit access” is selected you can set up a list with allowed web addresses. The user will only be able to access websites that are on the list. Click “Permit access”, then click “Apply” and type the exact address into the “Type URL” field. Click “Add”.

The next time a new Internet Explorer session is started, the Internet access will be restricted according to the chosen settings.

To disable the preset block list and/or the parental control

1. Select “No filtering” to disable the block list only.
2. Or click “Parental controls” on the left side of the “Windows CE Remote Management Tool”. Deselect the “Enable parental controls” option: the preset block list and the parental control feature are disabled.

Important note: all the options on the left part of the “Windows CE Remote Management Tool” window have already been set up in the factory. You do not need to modify them.

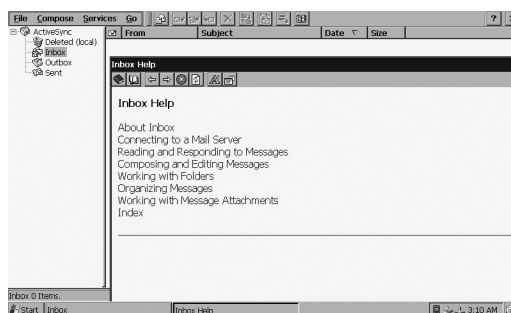
EMAIL APPLICATION

The Lexibook Laptop Master includes the “Inbox” email application software that allows you to send and receive emails easily.

To configure the “Inbox” email application:

1. Click “Start”, then select “Programs” and click “Inbox” to launch the application.
2. Click the “?” displayed on the upper right corner of the window to open the “Inbox Help” dialog box.
3. Click the “Connecting to a Mail Server” topic and follow the instructions on screen to set up a mail service.

WARNING: Some online email services might not work properly with this application.




SD CARD READER

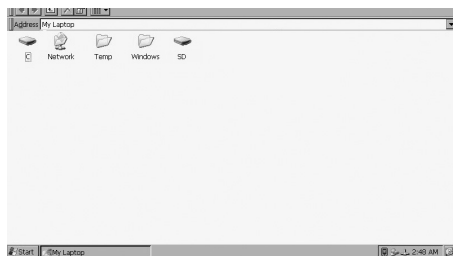
You can insert a SD card up to 16GB (not included) in the integrated SD card reader on the left side of the unit.

To access a SD card content:

1. Insert a SD card in the card reader of the Lexibook Laptop Master.



2. Double-click the “My Laptop” icon, then double-click the “SD” icon  to display the files stored on the SD card.



3. Push the card in and release it to pop the card out slightly. Grasp the card and remove it carefully from the card reader.



RESETTING THE SYSTEM

To reset the system, or “reboot,” press the “Reset” button located under the unit. You can use this button when you encounter hardware or software problems, which lock up the Lexibook Laptop Master.

WARNING: Mal-function or loss of memory may be caused by strong frequency interference or electrostatic discharge. Should any abnormal function occur, reset the unit or unplug the AC/DC adapter from the mains socket and re-plug it again.

TROUBLESHOOTING

When you encounter a problem, you should first try to:

- Remove all the external devices and check if the problem persists.
- Make sure the power cord is properly plugged into the wall outlet and to the computer.
- Make sure the power indicator of the computer is on.
- Check to see if your keyboard is operational by pressing and holding any key.
- Check for any incorrect or loose cable connections.
- If external devices do not function correctly when connected to the system, it is usually the device’s own problem. Consult the device’s manufacturer first.

The computer does not power on

- Make sure the power adapter plug is firmly inserted into the socket.
- First charge the battery, connect the adapter to the laptop and then turn on your computer.
- Make sure the power indicator is lit up when you use the integrated battery or AC adapter.
- If these methods do not work, contact the nearest service center.

The computer crashes, runs slow or programs do not operate correctly

- Close other running software to decrease system overhead.
- If the above methods fail, press the “Reset” button located under the computer and restart again.

Short service time of battery

- Make sure the battery is fully charged.
- Make sure the battery is not used for an excessive long time after being fully charged.
- Recharge the battery before using it again.
- Due to the battery's chemical properties, it's normal that after frequent use, the battery's service time shortens.
- Any further questions, please contact the nearest service center.

After the Lexibook welcome screen, the laptop switch itself off/LCD blank screen

- Make sure the battery has enough power for the computer to start and operate normally.
- Plug the AC adapter to a main socket to charge the battery.

Built-in speaker doesn't work

- Check the volume settings in the volume control panel.
- Earphones may be inserted into the computer.

Disconnection of SD card

- Check the connection between the equipment and the computer.
- Check if the computer interface configuration can satisfy the requirements of the devices, or if they are compatible.

Is it possible to install a new program?

You can install new programs on your laptop if they are compatible with Windows CE 5.0 (those programs are rare). But for security reasons Windows CE 5.0 will generally not allow new applications. This will protect your laptop and prevent the unit from being infected by viruses.

SPECIFICATIONS

CPU	533MHz
Memory	128MB (Around 32MB used for operating system)
Storage	4GB (expandable up to 16GB)
LCD display	8" Digital TFT (800 x 480px)
Connector	2 x USB 1.1 ports, SD card reader (SDHC compatible), Ethernet port, Microphone input, Headphone jack, AC power jack, Touch Pad
LAN	Built-in 10/100 Mbit LAN, Compatibility with the Lexibook WiFi USB key
Audio	Built-in mono speaker
Battery	1 lithium battery (included) / 1500mAh, 7.4V ===
Battery life	3 hours (average)
Dimension	225 x 165 x 30 mm
Weight	0.8kg
Adaptor specifications:	Input: 100V-240V~ 50/60Hz 0.8A Output: 9.8V 2.5A

MAINTENANCE

To prevent fire or shock hazard, disconnect your unit from the AC power source when cleaning. The finish on your unit may be cleaned with a dust cloth and cared for as other furniture. Use a soft, clean cloth moistened with plain, lukewarm water to clean the exterior of the unit. Use caution when cleaning and wiping the plastic parts. Mild soap and a damp cloth may be used on the front panel.

LCD Care

LCD screens are delicate devices that need careful handling. To avoid damage to the display panel, please pay attention to the following precautions:

- Do not slam the display when closing it.
- Do not place any object on top of the display when it is closed or open.
- Make sure the system is turned off before you close the display panel.
- When you are not using the computer, keep the LCD screen closed to protect it from dust.
- If you need to clean your LCD screen, use a soft tissue to gently wipe the LCD surface.
- Do not put your fingers or sharp objects directly on the surface and never spray cleaner directly onto the display.
- Do not press on, or store any objects on the cover when it is closed. Doing so may cause the LCD to break.

WARRANTY

NOTE: Please keep this instruction manual, it contains important information.

This product is covered by our 1-year warranty. For any claim under the warranty or after sale service, please contact your distributor and present a valid proof of purchase. Our warranty covers any manufacturing material and workmanship defect, with the exception of any deterioration arising from the non-observance of the instruction manual or from any careless action implemented on this item (such as dismantling, exposition to heat and humidity, etc.). It is recommended to keep the packaging for any further reference.

In a bid to keep improving our services, we could implement modification on the colours and the details of the product shown on the packaging.

Reference: MFC110GB

©2009 LEXIBOOK®

Designed and developed in Europe – Made in China, Zhongshan

Lexibook UK Ltd,
Wimbledon Village Business Centre,
Thornton House, Thornton Road,
Wimbledon, London SW19 4NG
UK

For any further information, please call Helpline 0808 1003015
www.lexibook.com



Environmental Protection

Unwanted electrical appliances can be recycled and should not be discarded along with regular household waste! Please actively support the conservation of resources and help protect the environment by returning this appliance to a collection centre (if available).



FCC Notice

This product complies with Part 15 of the FCC rules. Operation is subject to the following two conditions:

(1) This device may not cause harmful interference, and (2) This device must accept any interference received, including interference that may cause undesirable operation.

This equipment has been tested and found to comply with the limits for Class B digital devices pursuant to Part 15 of the FCC rules. These limits are designed to provide reasonable protection against harmful interference to radio communications. Because this equipment generates, uses, and can radiate radio frequency energy, there can be no guarantee that interference will not occur. If this equipment does cause interference to radio or television reception (you can check this by turning the equipment off and on while listening for the interference), one or more of the following measures may be useful:

- Reorient or relocate the receiving antenna
- Increase the separation between the equipment and the radio or the TV
- Consult the dealer or an experienced TV-radio technician for help.



NOTE: *Changes or modifications to this unit not expressly approved by the party responsible for compliance could void the user's authority to operate the equipment.*

EC DECLARATION OF CONFORMITY



Lexibook® S.A.
2, avenue de Scandinavie
91953 Courtaboeuf Cédex – France

Declare under our sole responsibility that the following product:

Kind of product: Personal computer

Type designation: MFC110GB

Complies with both the EMC Directive (2004/108/EC) and the Low Voltage Directive (2006/95/EC) and, for the Lexibook WiFi USB key only, the R&TTE Directive (1999/5/EC) issued by the Commission of the European Community.

A handwritten signature in black ink, appearing to read "Yiu Wai Man". The signature is fluid and cursive, with the first name "Yiu" being the most prominent.

Yiu Wai Man
Research and Development Manager