



# Installation Guide

(Please read the following steps to assemble)

Please note that the pictures in this installation guide are for reference only, and may vary from the actual product.

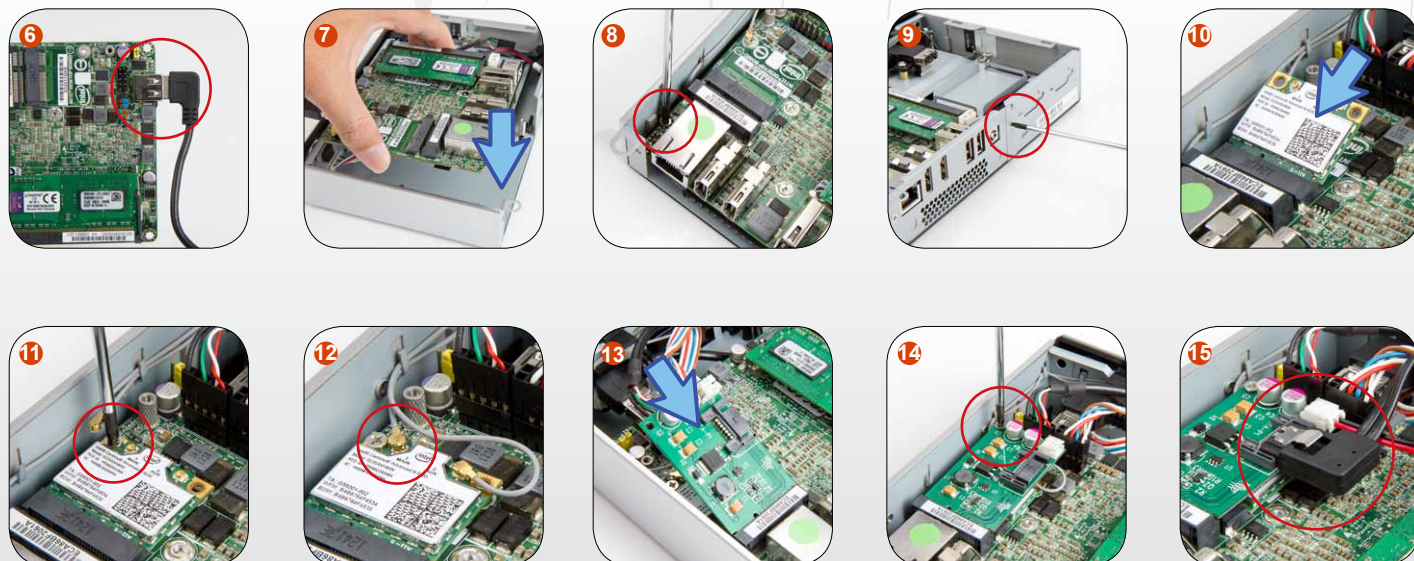
## [ Opening the Chassis ]

1. Remove Top Cover: Remove the screw and remove top cover. **1 2**
2. Remove MB Cover: Remove the screws and remove MB cover. **3 4**
3. Remove Rear I/O Shield: Remove the screws and remove rear I/O shield. **5**



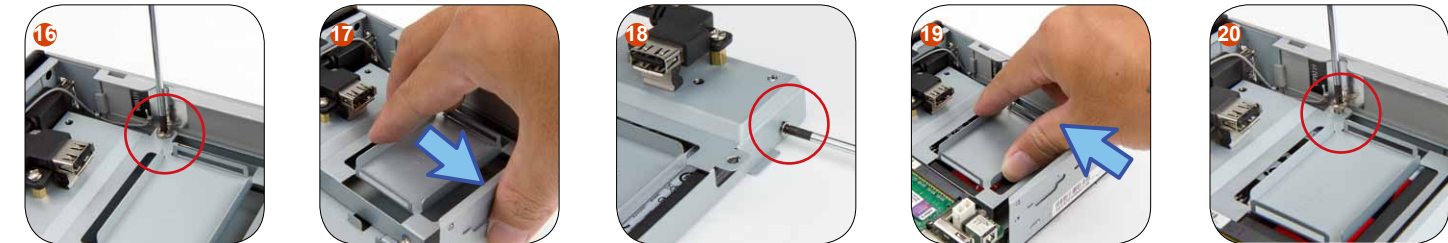
## [ Top USB 2.0 / Motherboard / Wi-Fi Antenna / mSATA to SATA Adapter Installation ]

4. **Top USB 2.0 Header:** Connect to motherboard. **6**
5. **Motherboard:**
  - Place the motherboard into the case, align the screw holes and secure it with the screws. **7 8**
  - Equip rear I/O shield, secure it with the screws. **9**
- \*Please follow MB Installation Guide to connect cables to MB.
6. **Top and Front Wi-Fi Antenna Connector:** Install a Wi-Fi adapter in Mini PCI-E port on the MB. **10 11 12**
- \*Requires Wi-Fi adapter. Connect the top antenna to the main connector. Connect the front antenna to the Aux connector.
7. **mSATA to SATA Adapter:**
  - Insert the mSATA to SATA Adapter into Mini PCI-E port on the MB. Secure it with the screw. **13 14**
  - Connect SATA HDD signal and power cable to mSATA adapter. **15**



## [ 2.5" HDD/SSD Installation ]

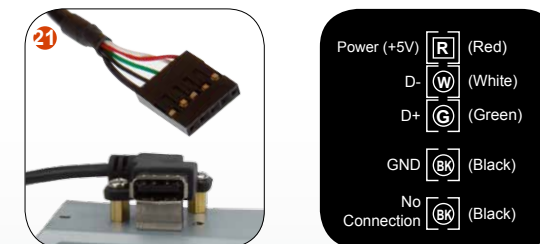
8. Remove the HDD cage screws. Pull the HDD cage rearward and remove the HDD cage. **16 17**
9. Install the HDD drive into the HDD cage. Secure it with the screws. **18**
10. Slide HDD cage into the HDD bay. Insert the HDD drive to SATA connector. Secure it with the screw. **19 20**



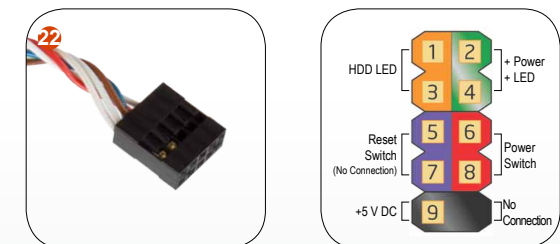
## [ I/O Wires Installation ]

11. Connect all cables to motherboard. (Included USB, HDD LED, Power Switch, Power LED, etc...)
- Internal USB 2.0 Header **21**
- Front Panel Header (Included HDD LED, Power LED and Power Switch) **22**

### Internal USB 2.0 Header



### Front Panel Header



## [ Installation Completed ]

12. Install the MB cover. Secure it with the screws. **23 24**
13. Slide the top cover back to the chassis and secure it with the screws. **25**

