



Wireless Speaker

BT-200



Owner's Manual

Read this manual before installation and use.

Thank you for purchasing the BT-200 wireless speaker. Read carefully before first use.

• **Battery**

Rechargeable lithium battery

1. Do not fully drain battery. Battery defects will occur.
2. Battery life will decrease if the battery charge remains in a constant low.
3. Keep the wireless speaker fully charged to extend battery lifetime and standby time.
4. Do not overcharge battery. It will shorten battery life.

WARNING!

DO NOT open the power adapter; this is to avoid electric shock.

• **CAUTION !**

1. Do not use the Bluetooth speaker if it has been dropped, damaged, wet, or overheating.
2. Do not open the wireless speaker. This reduces risk for fire or electrical shock. Warranty will be null and void as a result.
3. Never let product become exposed to humid environment or rain as the water that leaks in may disable it to the extent beyond maintenance.
4. Do not turn on where wireless equipment is forbidden or when usage will cause interference or danger. Observe any relevant restrictions.
5. Dispose according to local standards and regulations.

Important Safety Instructions**Getting Started..... 4****Description 5**

Front 5

Bottom 5

Operation..... 6

Channels 6

Discovery 6

Volume 6

Connection 6

Operation-Bluetooth(CH01) 7-8

Play Music 7

Hands free call 7

Sleep Mode..... 7

Change device 8

Operation-Auxiliary(CH02) 9

Play Music 9

Soft Keys 10**Specifications 11****Compliance Information 12****Warranty 13-14**

Getting Started

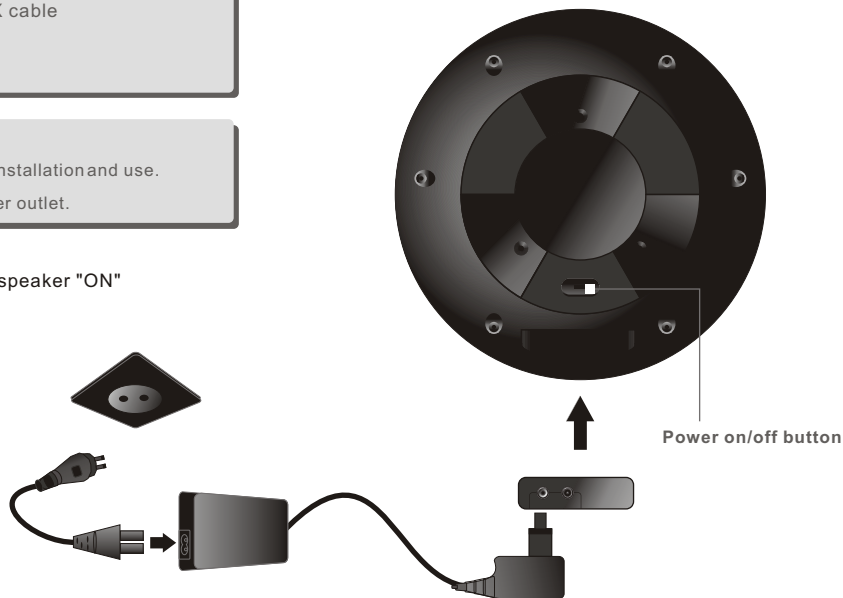
BT-200

Box Contents:

- | | |
|---------------------|--------------|
| 1. Wireless Speaker | 4. AUX cable |
| 2. Owner Manual | |
| 3. AC Adapter | |

- Unpack wireless speaker.
- Read through user manual before installation and use.
- Connect the AC adapter into a power outlet.

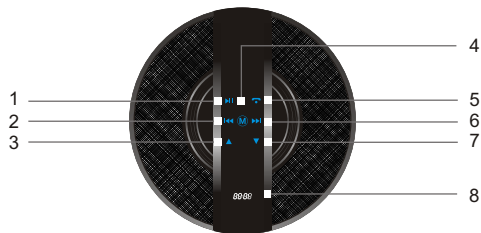
- Press the power button to turn the speaker "ON"



Description

BT-200

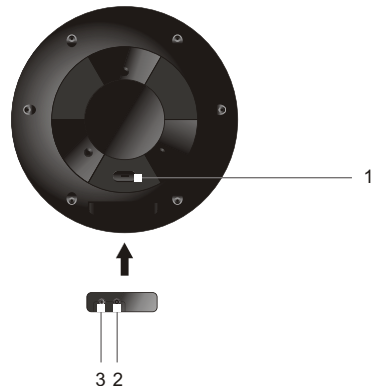
Front



No.	Name	Description
1	Play/Pause	Press to pause or play
2	Previous	Skip backward
3	Volume up	Increase volume
4	Mode	Select channel mode
5	Hands free calling	Press to answer, end or make call
6	Next	Skip forward
7	Volume down	Decrease volume
8	Display	Display information

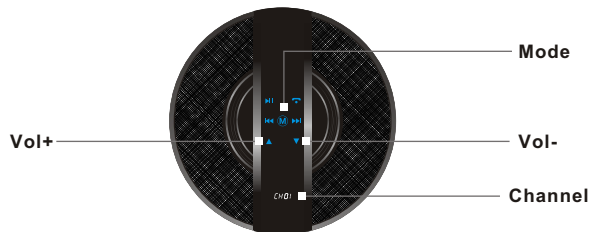
Bottom

No.	Name	Description
1	Power on/off	Press to power on / off
2	AUX port	Connect to External source
3	Power input	Connect to AC adapter to charge



Channels:

- There are two different modes.
 - CH01: Bluetooth mode (Default)
 - CH02: Auxiliary



Bluetooth:

- To connect while in Bluetooth mode.
- Press " M " button to change channel.

Discovery:

- Power on. (Default CH01 Bluetooth)
- The other Bluetooth compatible device will find "BT-200".

- Sync and pair the two devices.
- Once connection is established, begin to play music, make, answer, or end a phone call.

Note:

- If asked for a PIN, enter "0000".

Volume:

- Press "Volume up/down" button (see page 4) to adjust sound.

Connection:

- Discover or Pairing:**
If device is connected, an alternating, blue and red, light will flash.
- Standby:**
While device is searching, an alternating, blue and red, light will flash.
- Active:**
Once Bluetooth device is connected successfully, a blue light will flash slowly.

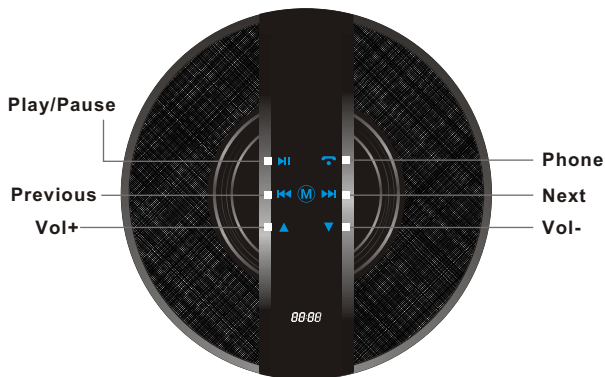
Note:

- To connect to a device: notebook, mobile phone, tablet etc. follow the instructions for the device.
- Once the speaker is connected, set sound to "Output"
- If the device cannot connect to the speaker, simply reboot the speaker.

Play music:

Bluetooth mode (CH01)

- Play music from connected device: notebook, mobile phone, tablet etc.
- Press "Play/Pause" button to start playing music. While music is playing press "Play/Pause"
- To adjust the volume simply press "Up" to increase the volume, or "Down" to decrease the volume.



- Press the "Next" button to skip song, or move to the following song.
- Press the "Previous" button to playback song, or start song over, if song is playing. Press it twice quickly to return to prior song.

Hands free call

While in Bluetooth mode (CH01)

- Use "Phone" button to answer or end a call.
- Double tap "Phone" button to redial last call.

Sleep Mode:

- If speaker is left inactive for 15 minutes, it will enter sleep mode.

Note:

- The speaker will reject connection while in sleep mode. To reconnect, turn speaker on.

Change device:

Speaker can ONLY connect to one device at a time.

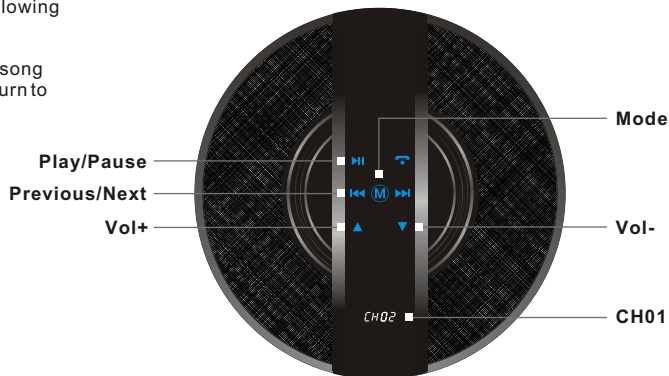
- Reboot speaker, causing it to enter discover mode.
- Turn Bluetooth on.
- The other Bluetooth compatible device will find "BT-200".
- Sync and pair the two devices.
- Once connection is established, begin to play music, make, answer, or end a phone call.

Note:

- It is preferred to wait 15 minutes between switch. If asked for PIN, enter "0000".

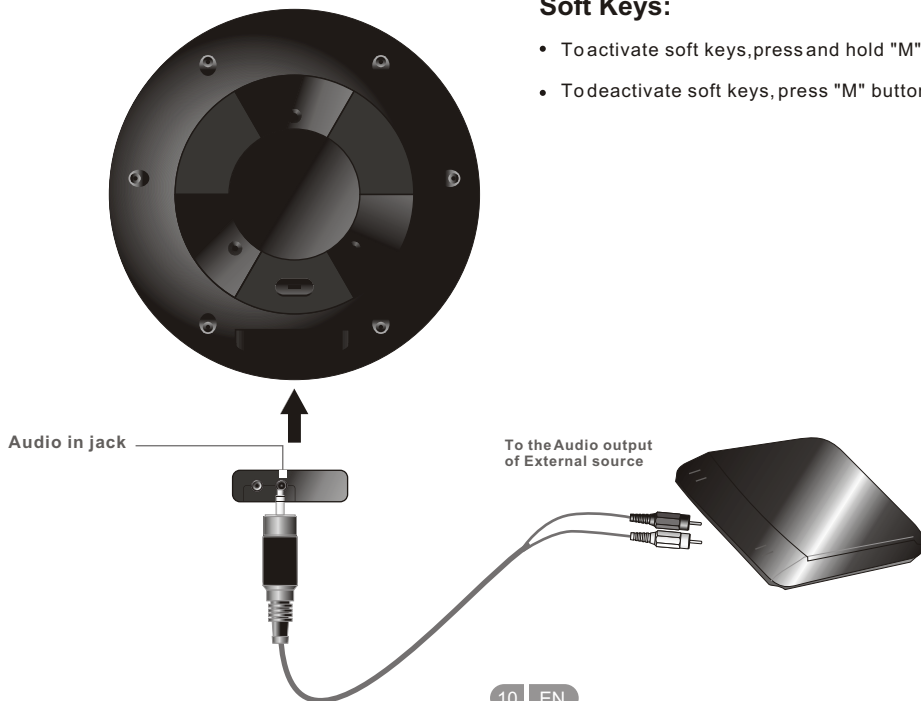
Play Music:

- Connect an external audio device to speaker.
- Change from default (CH01) to CH02 by press "M" button.
- Press "Play/Pause" button to start playing music. While music is playing press "Play/Pause" to pause the music.
- To adjust the volume simply press "Up" to increase the volume, or "Down" to decrease the volume.
- Press "Next" button to skip song, or move to the following song.
- Press "Previous" button to playback song, or start song over, if song is playing. Press it twice quickly to return to song prior.




Soft Keys:

- To activate soft keys, press and hold "M" button for 10 seconds.
- To deactivate soft keys, press "M" button for 10 seconds.



Specifications

BT-200

Bluetooth Version	Bluetooth 2.1+EDR
Configuration file supported	A2DP AVRCP
Transmission distance of Bluetooth	10m
Bluetooth frequency	2.4G
Bluetooth call	Supports
Power consumption	6w*2 (THD=10%)
Frequency range	80-20kHz +/- 3dB
Built-in lithium battery	7.4V 1000mAH
DC input	9V  1A
Using environment	Ambient temperature: 14°F - 104°F
Product size:	200 (D) x 55 (H) mm
Net weight::	1.5lbs

FCC NOTICE

The following statement applies to all products that have received FCC approval. Applicable products bear the FCC logo, and/or an FCC ID in the format FCC ID: 2AAKHBT-200 on the product label.

This mobile device complies with part 15 of the FCC Rules. Operation is subject to the following two conditions: This mobile device may not cause harmful interference, and this mobile device must accept any interference received, including interference that may cause undesired operation. This mobile device has been tested and found to comply with the limits for a Class B digital device, pursuant to Part 15 of the FCC Rules. These limits are designed to provide reasonable protection against harmful interference in a residential installation. This equipment generates, uses and can radiate radio frequency energy and, if not installed and used in accordance with the instructions, may cause harmful interference to radio communications. However, there is no guarantee that interference will not occur in a particular installation. If this equipment does cause harmful interference to radio or television reception, which can be determined by turning the equipment off and on, the user is encouraged to try to correct the interference by one or more of the following measures:

- Reorient or relocate the receiving antenna.
- Increase the separation between the equipment and receiver.
- Connect the equipment into an outlet on a circuit different from that to which the receiver is connected.
- Consult the dealer or an experienced radio/TV technician for help.

Changes or modifications not expressly approved by the party responsible for compliance could void the user's authority to operate the equipment. The antenna(s) used for this transmitter must not be collocated or operating in conjunction with any other antenna or transmitter.

ONE-YEAR LIMITED WARRANTY ON PARTS AND 90 DAYS ON LABOR

DOPO provides a warranty to the original purchaser of a new Product against defects in materials and workmanship for a period of one year of non-commercial usage and ninety (90) days of commercial use. If a Product covered by this warranty is determined to be defective within the warranty period, DOPO will either repair or replace the unit at its sole option and discretion.

PARTS AND LABOR

There will be no charge for parts or labor during the first ninety (90) days of the warranty period. Thereafter and up to one year from the date of purchase, parts only are under warranty. There will be a labor fee if repairs are required during this time. Replacement parts and units may be new or recertified at DOPO's option and sole discretion.

Replacement parts and units are warranted for the remaining portion of the original warranty or for ninety (90) day from warranty service or replacement, whichever is greater.

TYPE OF SERVICE

Defective Products must be sent to a DOPO service center to obtain warranty service. DOPO is not responsible for transportation costs to the service center, but DOPO will cover return shipping to the customer. Pre-authorization is required before sending any unit in for warranty service.

Product returns to DOPO's service centers must utilize either the original box and shipping material or packaging that affords an equal degree of protection. DOPO Technical Support will provide instructions for packing and shipping the covered Product to the DOPO service center.

Limitations and Exclusions

DOPO's one-year limited warranty only covers defects in materials and workmanship. This warranty does not cover: cosmetic damage, units that are dropped, normal wear and tear, improper operation, improper voltage supply or power surges, signal issues, damages from shipping, acts of God, any type of customer misuse, modifications or adjustments, as well as installation and set-up issues or any repairs attempted by anyone other than by a DOPO authorized service center. Products with unreadable or removed serial numbers, or requiring routine maintenance are not covered. This one year limited warranty does not cover Products sold "AS IS", "FACTORY RECERTIFIED", or by a non-authorized reseller.

THERE ARE NO EXPRESS WARRANTIES OTHER THAN THOSE LISTED OR DESCRIBED ABOVE. ANY IMPLIED WARRANTIES, INCLUDING ANY IMPLIED WARRANTY OF MERCHANTABILITY AND FITNESS FOR A PARTICULAR PURPOSE, SHALL BE LIMITED IN DURATION TO THE

PERIOD OF TIME SET FORTH ABOVE. DOPO'S TOTAL LIABILITY FOR ANY AND ALL LOSSES AND DAMAGES RESULTING FROM ANY CAUSE WHATSOEVER INCLUDING DOPO'S NEGLIGENCE, ALLEGED DAMAGE, OR DEFECTIVE GOODS, WHETHER SUCH DEFECTS ARE DISCOVERABLE OR LATENT, SHALL IN NO EVENT EXCEED THE PURCHASE PRICE OF THE PRODUCT. DOPO SHALL NOT BE RESPONSIBLE FOR LOSS OF USE, LOSS OF INFORMATION OR DATA, COMMERCIAL LOSS, LOST REVENUE OR LOST PROFITS, OR OTHER INCIDENTAL OR CONSEQUENTIAL DAMAGES.

Some states do not allow limitations on how long an implied warranty lasts or the exclusion of incidental or consequential damages, so the above limitations or exclusions may not apply to you. This warranty gives you specific legal rights, and you may also have other rights, which vary from state to state. THIS WARRANTY IS SUBJECT TO CHANGE WITHOUT NOTICE.



SERVICE CENTER
1845 S.Vineyard Ave.Ste.4
Ontario,CA 91761

The Bluetooth® word mark and logos are registered trademarks owned by Bluetooth SIG, Inc., and any use of such marks by Double Power Technology Inc. is under license.

TO OBTAIN WARRANTY SERVICE

contact DOPO Technical Suport
email:TechSupport@doublepowertech.com

Pre-authorization must be obtained before sending any product to the Service Center.Proof of purchase in the form of a purchase receipt or copy is required to show that a product is within the warranty period.