



Installation Instructions EVO-RD4-LCD15

POSX
IMPROVING THE POS EXPERIENCE

document version 1.0

www.pos-x.com | 360.738.8433 | support@pos-x.com

INTRODUCTION

Thank you for purchasing the EVO-RD4-LCD15. POS-X strives to provide the best possible product and service to its customers. If you experience any difficulties with this product, contact support at 800-790-8657 ext. 5.

SAFETY

To reduce the risk of personal injury and property damage, adhere to the guidelines below.

⚠ WARNING!

Disconnect electrical devices from power when performing physical maintenance, repair, or modification to reduce the risk of electrical shock and property damage.

Read all instructions before beginning installation. If you are uncertain of your ability to complete the installation, consult customer support or other qualified personnel.

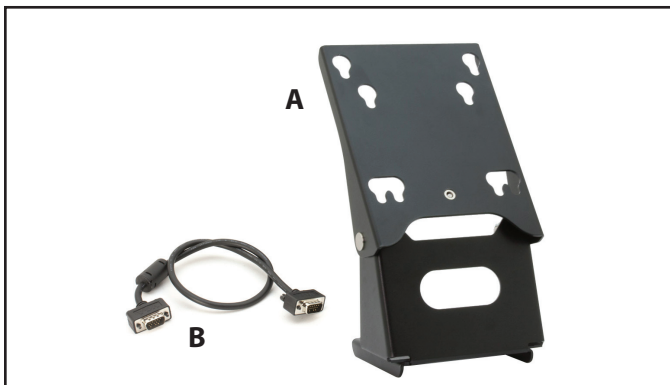
Follow all safety warnings for the EVO-TM4/EVO-TP4 as described in its owner's manual.

TOOLS REQUIRED

- Phillips Screwdriver #2
- USB Keyboard
- Kit for EVO-TM4 only (#EVO-RD4-LCD15TM)

INVENTORY

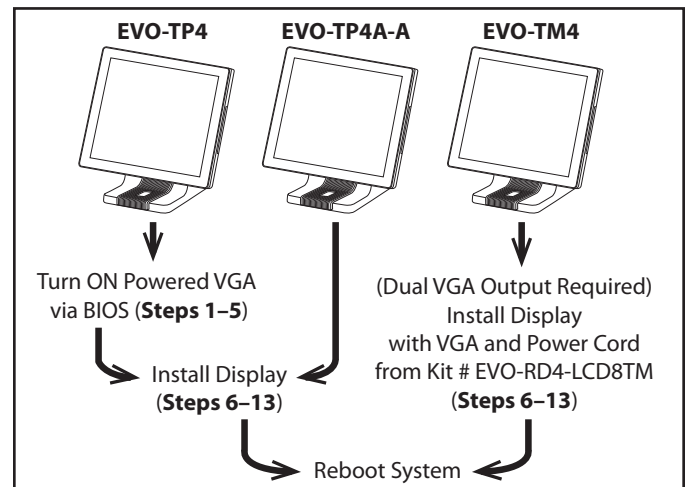
- Mounting Bracket
- VGA Cable
- Screws (x2)
- 15" Rear Display



Mounting bracket

INSTALLATION

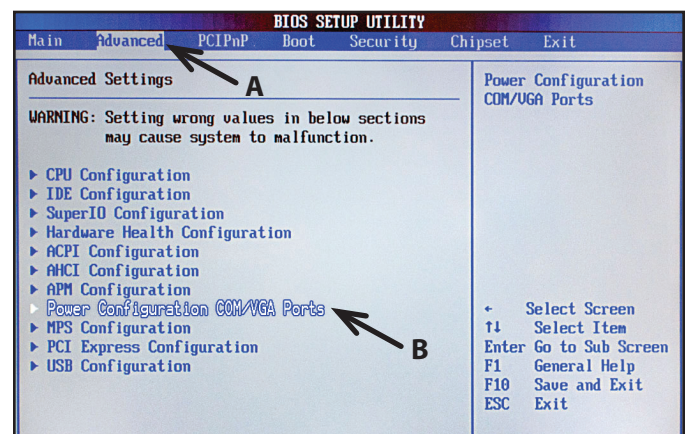
Installation varies depending on which model you will mount the rear display to. See the model-specific instructions below and proceed as indicated.



Steps Required for Specific Models

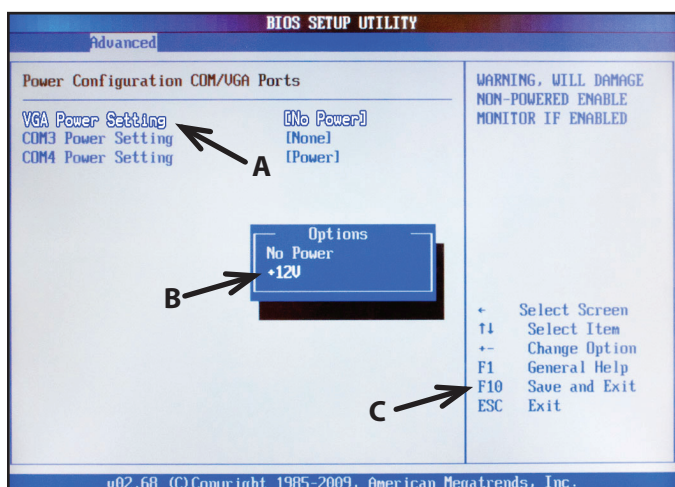
To turn the powered VGA output ON (EVO-TP4 series only, excluding EVO-TP4A-A):

- 1 Turn the system **OFF**. **Note:** If a USB keyboard is not currently connected to the system, connect one now.
- 2 Turn the system **ON** while holding the **Delete** key to enter the BIOS.
- 3 Select the "Advanced" tab (A), then "Power Configuration COM/VGA Ports" (B).



Configuring VGA Port

- 4** From the “Power Configuration COM/VGA Ports” menu, select “VGA Power Setting” (A), then choose “+12V” (B).

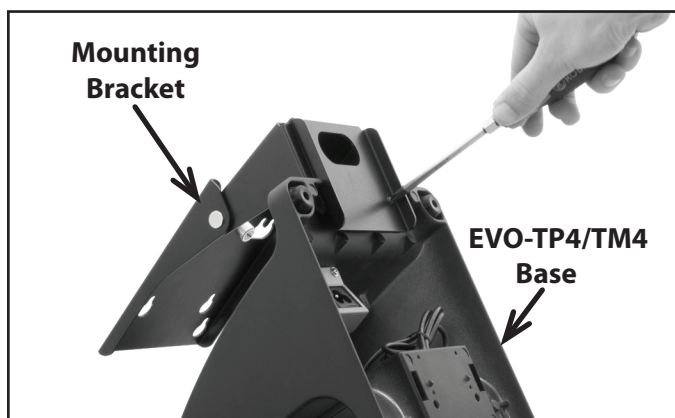


Turning Power ON

- 5** Save and Exit from BIOS (C) by pressing **F10**, allow the system to start, then turn it **OFF**.

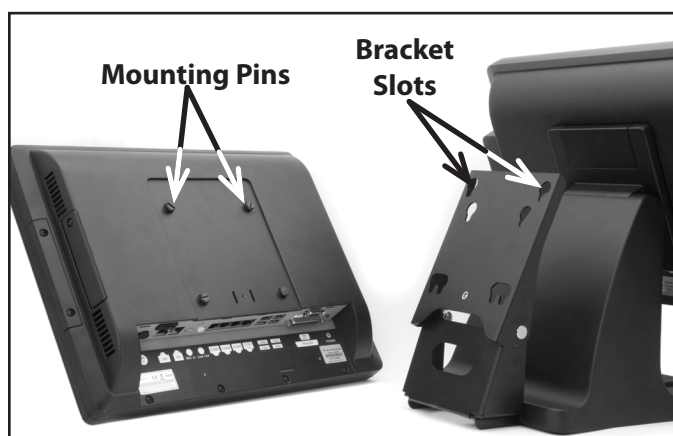
To install the rear display (all models):

- 6** Make sure the system is **OFF**.
- 7** Disconnect the system from power.
- 8** Turn the EVO-TP4/TM4 over to access the bottom of the housing. Take care to place the unit on a clean, non-abrasive surface to avoid damaging it.
- 9** Secure the mounting bracket to the EVO-TP4/TM4 base with the two included screws, as shown in the figure below.



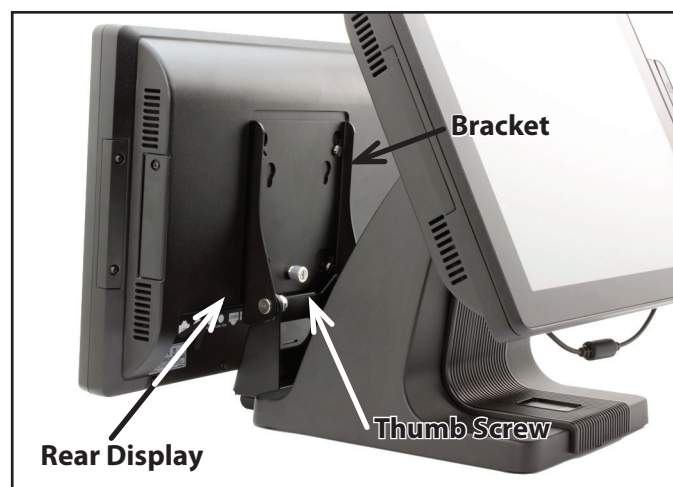
Securing bracket to EVO-TP4/TM4 base.

- 10** Set the unit upright, then line up the mounting pins on the back of the rear display to the slots in the bracket, as shown below.



Aligning mounting pins with slots.

- 11** Place the rear display onto the bracket, then secure it by tightening the thumb screw shown below.



Securing rear display to bracket.

- 12** If you are attaching the rear display to the EVO-TP4, connect the supplied VGA cable from the rear display VGA port to the powered VGA port on the underside of the TP4.

If you are attaching the rear display to the EVO-TM4, connect the supplied VGA cable from the rear display VGA port to the 2nd VGA port on the computer. Then, connect the power cord to the “A/C In” port on the underside of the unit. Connect the power cord to power. We recommend placing the transformer in the TM4 base for a cleaner installation.

- 13** Turn the unit and the rear display **ON**.