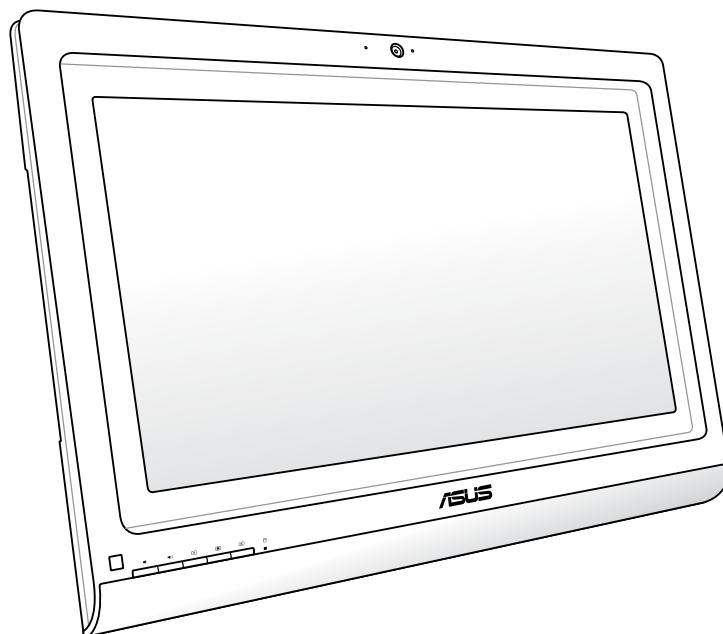


ASUS All-in-One PC

User Manual



ET2020 Series

COPYRIGHT INFORMATION

No part of this manual, including the products and software described in it, may be reproduced, transmitted, transcribed, stored in a retrieval system, or translated into any language in any form or by any means, except documentation kept by the purchaser for backup purposes, without the express written permission of ASUSTeK COMPUTER INC. ("ASUS").

ASUS PROVIDES THIS MANUAL "AS IS" WITHOUT WARRANTY OF ANY KIND, EITHER EXPRESS OR IMPLIED, INCLUDING BUT NOT LIMITED TO THE IMPLIED WARRANTIES OR CONDITIONS OF MERCHANTABILITY OR FITNESS FOR A PARTICULAR PURPOSE. IN NO EVENT SHALL ASUS, ITS DIRECTORS, OFFICERS, EMPLOYEES OR AGENTS BE LIABLE FOR ANY INDIRECT, SPECIAL, INCIDENTAL, OR CONSEQUENTIAL DAMAGES (INCLUDING DAMAGES FOR LOSS OF PROFITS, LOSS OF BUSINESS, LOSS OF USE OR DATA, INTERRUPTION OF BUSINESS AND THE LIKE), EVEN IF ASUS HAS BEEN ADVISED OF THE POSSIBILITY OF SUCH DAMAGES ARISING FROM ANY DEFECT OR ERROR IN THIS MANUAL OR PRODUCT.

Products and corporate names appearing in this manual may or may not be registered trademarks or copyrights of their respective companies, and are used only for identification or explanation and to the owners' benefit, without intent to infringe.

SPECIFICATIONS AND INFORMATION CONTAINED IN THIS MANUAL ARE FURNISHED FOR INFORMATIONAL USE ONLY, AND ARE SUBJECT TO CHANGE AT ANY TIME WITHOUT NOTICE, AND SHOULD NOT BE CONSTRUED AS A COMMITMENT BY ASUS. ASUS ASSUMES NO RESPONSIBILITY OR LIABILITY FOR ANY ERRORS OR INACCURACIES THAT MAY APPEAR IN THIS MANUAL, INCLUDING THE PRODUCTS AND SOFTWARE DESCRIBED IN IT.

Copyright © 2013 ASUSTeK COMPUTER INC. All Rights Reserved.

LIMITATION OF LIABILITY

Circumstances may arise where because of a default on ASUS' part or other liability, you are entitled to recover damages from ASUS. In each such instance, regardless of the basis on which you are entitled to claim damages from ASUS, ASUS is liable for no more than damages for bodily injury (including death) and damage to real property and tangible personal property; or any other actual and direct damages resulted from omission or failure of performing legal duties under this Warranty Statement, up to the listed contract price of each product.

ASUS will only be responsible for or indemnify you for loss, damages or claims based in contract, tort or infringement under this Warranty Statement.

This limit also applies to ASUS' suppliers and its reseller. It is the maximum for which ASUS, its suppliers, and your reseller are collectively responsible.

UNDER NO CIRCUMSTANCES IS ASUS LIABLE FOR ANY OF THE FOLLOWING: (1) THIRD-PARTY CLAIMS AGAINST YOU FOR DAMAGES; (2) LOSS OF, OR DAMAGE TO, YOUR RECORDS OR DATA; OR (3) SPECIAL, INCIDENTAL, OR INDIRECT DAMAGES OR FOR ANY ECONOMIC CONSEQUENTIAL DAMAGES (INCLUDING LOST PROFITS OR SAVINGS), EVEN IF ASUS, ITS SUPPLIERS OR YOUR RESELLER IS INFORMED OF THEIR POSSIBILITY.

SERVICE AND SUPPORT

Visit our multi-language web site at <http://support.asus.com>

Table of Contents

About this manual	5
Conventions used in this manual	6
Icons	6
Typography	6
Safety information	7
Setting up your system	7
Care during use	7
Sound Pressure Warning	8
TV Tuner (on selected models)	8
DC Fan Warning	8
Package contents	9
Chapter 1: Hardware Setup	
Getting to know your All-in-One PC	10
Front view	10
Rear View	14
Side view	20
Chapter 2: Using your All-in-One PC	
Positioning your All-in-One PC	22
Mounting to the wall	23
Setting up your All-in-One PC	25
Connecting a wired keyboard and mouse	25
Connecting a wireless keyboard and mouse	25
Turning your All-in-One PC on	26
Gestures	27
Configuring the audio output using an HDMI device	29
Chapter 3: Working with Windows® 8	
System requirements	31
Starting for the first time (For Windows® 8 and Windows® 8 Professional)	32
Windows® 8 lock screen	32
Windows® UI	33
Start screen	33
Windows® apps	34
Hotspots	34
Working with Windows® apps	37

Table of Contents

Launching apps..... 37

Customizing apps..... 37

Accessing All Apps 38

Charm bar..... 39

Snap feature 41

Other keyboard shortcuts..... 42

Turning your All-in-One PC off 43

Chapter 4: Connecting to the Internet

Setting up a Wi-Fi connection in Windows® 7 44

Configuring a Wired connection in Windows® 7 45

 Using a Static IP Address..... 45

 Using a Dynamic IP Address (PPPoE)..... 47

Setting up a Wi-Fi connection in Windows® 8..... 50

Setting up a Wired connection in Windows® 8 51

 Configuring a dynamic IP/PPPoE network connection 51

 Configuring a static IP network connection 54

Chapter 5: Recovering your system

Entering the BIOS Setup 55

 Enter the BIOS..... 55

 Quickly enter the BIOS..... 55

Using the Recovery Partition in Windows® 7 56

 Recovering the OS to the Factory Default Partition (F9 Recovery)..... 56

 Backing up the Factory Default Environment Data to a USB Drive (F9 Backup)..... 56

 Using the USB storage device (USB Restore)..... 57

Resetting your All-in-One PC in Windows® 8..... 58

Recovering from a system image file in Windows® 8..... 59

 Creating a USB recovery drive..... 59

Removing everything and reinstalling Windows® 8..... 60

Appendices

Notices 61

About this manual

This manual provides information about the hardware and software features of your All-in-One PC.

Chapter 1: Hardware Setup

This chapter details the hardware components of your All-in-One PC.

Chapter 2: Using your All-in-One PC

This chapter provides you with information on using your All-in-One PC.

Chapter 3: Working with Windows® 8

This chapter provides an overview of using Windows® 8 in your All-in-One PC.

Chapter 4: Connecting to the Internet

This chapter provides information on connecting your All-in-One PC to a wired or Wi-Fi network.

Chapter 5: Recovering your system

This chapter provides recovery options for your All-in-One PC.

Appendices

This section includes notices and safety statements for your All-in-One PC.

Conventions used in this manual

To highlight key information in this manual, some text are presented as follows:

IMPORTANT! This message contains vital information that must be followed to complete a task.

NOTE: This message contains additional information and tips that can help complete tasks.

WARNING! This message contains important information that must be followed to keep you safe while performing tasks and prevent damage to your All-in-One PC's data and components.

Icons

The icons below indicate the devices you can use for completing a series of tasks or procedures on your All-in-One PC.



Use the touchscreen.



Use the keyboard.

Typography

Bold This indicates a menu or an item that must be selected.

Italic This indicates sections that you can refer to in this manual.

All illustrations and screenshots in this manual are for reference only. Actual product specifications and software screen images may vary with location. Visit the ASUS website at www.asus.com for the latest information.

Safety information

Your All-in-One PC ET2020 is designed and tested to meet the latest standards of safety for information technology equipment. However, to ensure your safety, it is important that you read the following safety instructions.

Setting up your system

- Read and follow all instructions in the documentation before you operate your system.
- Do not use this product near water or a heated source such as a radiator.
- Set up the system on a stable surface.
- Openings on the chassis are for ventilation. Do not block or cover these openings. Ensure that you leave plenty of space around the system for ventilation. Never insert objects of any kind into the ventilation openings.
- Use this product in environments with ambient temperatures between 0°C and 40°C.
- If you use an extension cord, ensure that the total ampere rating of the devices plugged into the extension cord does not exceed its ampere rating.

Care during use

- Do not walk on the power cord or allow anything to rest on it.
- Do not spill water or any other liquids on your system.
- When the system is turned off, a small amount of electrical current still remains in the product. Always unplug all power, modem, and network cables from the power outlets before cleaning the system.
- The touch screen requires periodic cleaning to perform at optimal touch sensitivity. Keep the screen clean from foreign objects or excessive dust accumulation. To clean the screen:
 - Turn off the system and disconnect the power cord from the wall.
 - Spray a small amount of household glass cleaner on the supplied cleaning cloth and gently wipe the surface of the screen.
 - Do not spray the cleaner directly on the screen.
 - Do not use an abrasive cleaner or a coarse cloth when cleaning the screen.
- If you encounter the following technical problems with the product, unplug the power cord and contact a qualified service technician or your retailer.
 - The power cord or plug is damaged.
 - Liquid has been spilled into the system.
 - The system does not function properly even if you follow the operating instructions.
 - The system was dropped or the cabinet is damaged.
 - The system performance changes.

Sound Pressure Warning

Excessive sound pressure from earphones or headphones can cause hearing loss or permanent damage to hearing. Increasing the volume and equalizer beyond default levels increases the output voltage and sound pressure produced by the earphones or headphones.

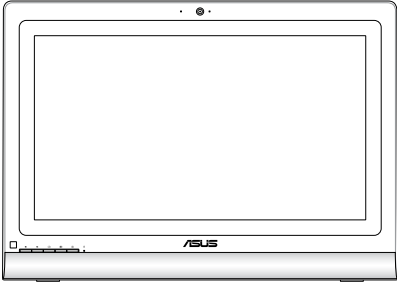

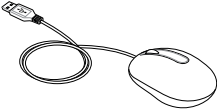

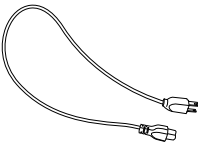
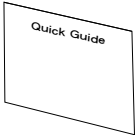
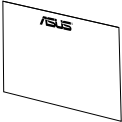
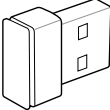
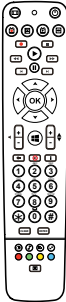

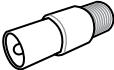
TV Tuner (on selected models)

Note to CATV System Installer—This reminder is provided to call the CATV systems installer's attention to Section 820-93 of the National Electric Code, which provides guidelines for proper grounding and, in particular, specify that the Coaxial cable shield be connected to the grounding system of the building as close to the point of cable entry as practical.

DC Fan Warning

Please note that the DC fan is a moving part and can cause harm when used improperly. Keep away from the fan when using the product.

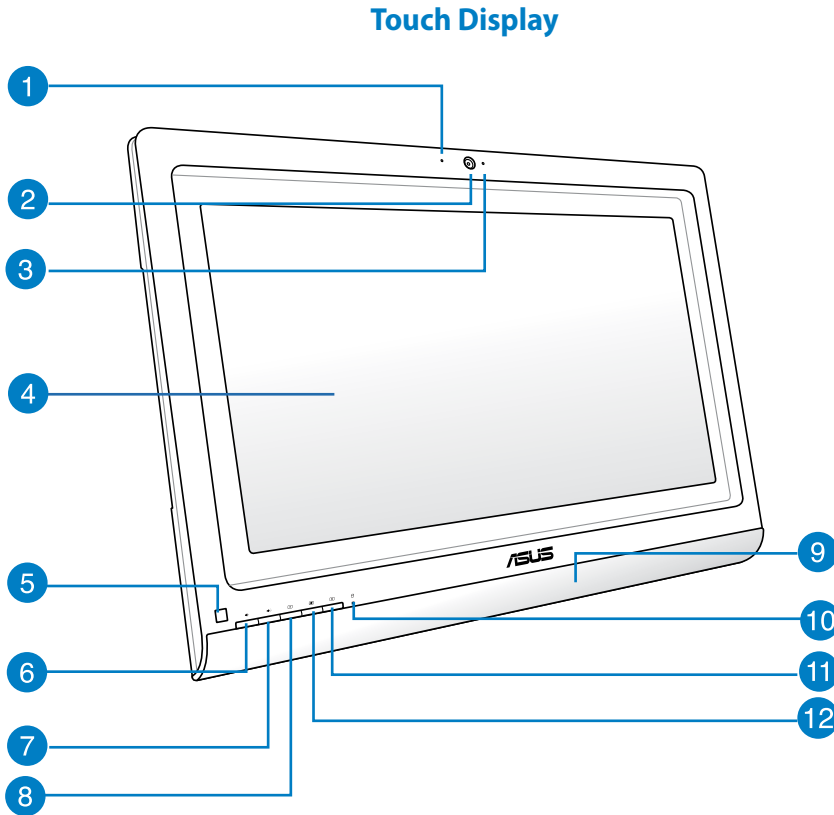
Package contents

		
All-in-One PC ET2020		Keyboard (wired or wireless, optional)
		
Mouse (wired or wireless, optional)	AC adapter	Power cord
		
Quick Start Guide	Warranty Card	KBM USB receiver dongle (optional)
		<p>NOTE: The keyboard, mouse, power supply, remote control, wall mount screws, and KBM USB receiver dongle illustrations are for reference only. Actual product specifications may vary according to location.</p>
	Wall mount screws	
		
Remote Control (optional)	TV tuner (optional)	

Chapter 1: Hardware Setup

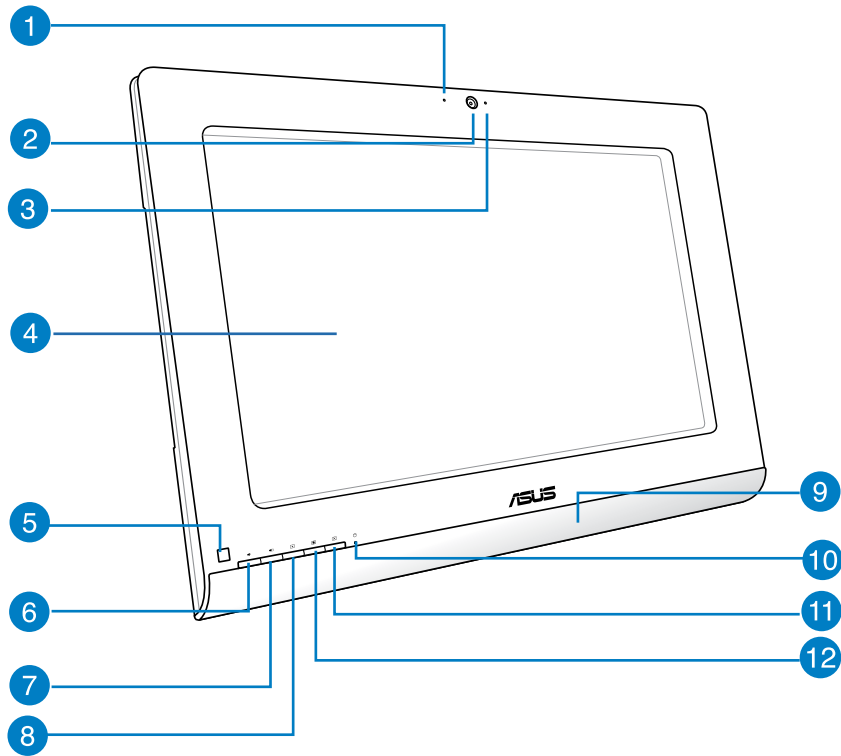
Getting to know your All-in-One PC

Front view



- 1 Digital microphone (Built-in)**
The built-in digital microphone can be used for video conferencing, voice narrations, audio recordings, and multimedia applications.
- 2 Webcam**
The built-in webcam with the built-in digital microphone allows you to start video chats online.
- 3 Webcam LED**
Indicates that the built-in webcam is enabled.
- 4 Touch-enabled LCD display**
The LCD display features optimal resolution. Touch-enabled models bring digital life to your fingertips.
- 5 Remote Control Receiver**
The remote control receiver receives the infrared signal from the remote control.
- 6 Volume decrease button**
Press to decrease system volume.
- 7 Volume increase button**
Press to increase system volume.
- 8 Decrease display Brightness**
Press this button to reduce display brightness.
- 9 Audio Speakers**
The built-in stereo speaker system allows you to hear audio without additional peripherals. The multimedia sound system features an integrated digital audio controller that produces rich, vibrant sound.
- 10 Hard Disk Drive LED**
Indicates hard disk drive activity.
- 11 Turn off display**
Press this button to switch off the All-in-One PC's display.
- 12 Increase display brightness**
Press this button to increase display brightness.

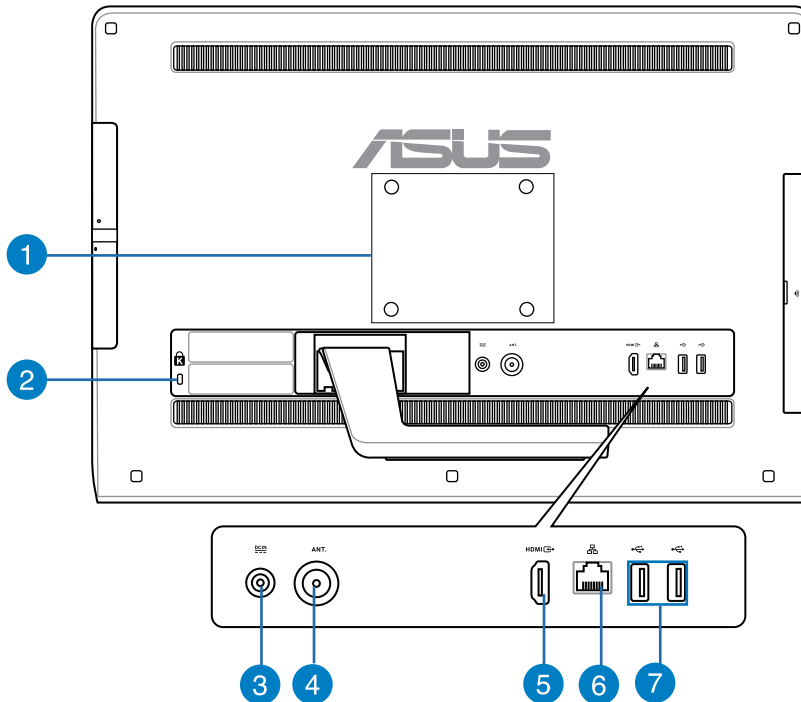
Non-Touch Display



- 1 Digital microphone (Built-in)**
The built-in digital microphone can be used for video conferencing, voice narrations, audio recordings, and multimedia applications.
- 2 Webcam**
The built-in webcam with the built-in digital microphone allows you to start video chats online.
- 3 Webcam LED**
Indicates that the built-in webcam is enabled.
- 4 Non-Touch LCD display**
The LCD display features optimal resolution.
- 5 Remote Control Receiver**
The remote control receiver receives the infrared signal from the remote control.
- 6 Volume decrease button**
Press to decrease system volume.
- 7 Volume increase button**
Press to increase system volume.
- 8 Decrease display Brightness**
Press this button to reduce display brightness.
- 9 Audio Speakers**
The built-in stereo speaker system allows you to hear audio without additional peripherals. The multimedia sound system features an integrated digital audio controller that produces rich, vibrant sound.
- 10 Hard Disk Drive LED**
Indicates hard disk drive activity.
- 11 Turn off display**
Press this button to switch off the All-in-One PC's display.
- 12 Increase display brightness**
Press this button to increase display brightness.

Rear View

ET2020A Series

**1 Wall mount holes**

Secure the four wall mount screws into these holes to mount your All-in-One PC to a wall.

NOTE: All ET2020 Series models are shipped with wall mount screws.

2 Kensington® lock hole

The Kensington® lock hole allows you to secure your PC using Kensington® compatible PC security products.

3 Power input

The supplied power adapter converts AC power to DC power for use with this jack. To prevent damage to the PC, always use the supplied power adapter.

WARNING! The power adapter may get warm or hot when in use. Do not cover the adapter and keep it away from your body.

4 Antenna socket

Connect standard indoor or outdoor male antenna connectors to receive over-the-air broadcast TV signals.

NOTE: The antenna socket is available for models with the optional TV Tuner card.

5 HDMI Output Port

Connect this port with devices equipped with an HDMI input port, such as an LCD monitor or projector.

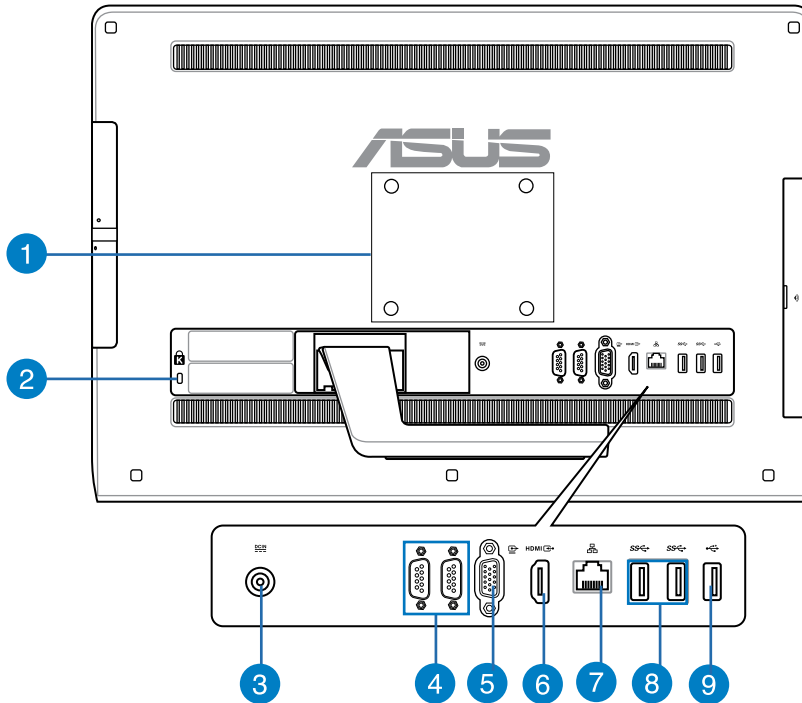
6 LAN port

This eight-pin RJ-45 LAN port supports a standard Ethernet cable for connection to a local network.

7 USB 2.0 ports

These USB (Universal Serial Bus) ports are compatible with USB 2.0 or USB 1.1 devices such as keyboards, pointing devices, flash disk drives, external HDDs, speakers, cameras and printers.

ET2020IU Series



1 Wall mount holes

Secure the four wall mount screws into these holes to mount your All-in-One PC to a wall.

NOTE: All ET2020 Series models are shipped with wall mount screws.

2 Kensington® lock hole

The Kensington® lock hole allows you to secure your PC using Kensington® compatible PC security products.

3 Power input

The supplied power adapter converts AC power to DC power for use with this jack. To prevent damage to the PC, always use the supplied power adapter.

WARNING! The power adapter may get warm or hot when in use. Do not cover the adapter and keep it away from your body.

4 COM ports

These serial ports connect a modem, or other devices that conform with serial specifications.

5 Video Graphics Adapter (VGA) Port

VGA ports are available for connecting additional VGA monitors or displays.

6 HDMI Output Port

Connect this port with devices equipped with an HDMI input port, such as an LCD monitor or projector.

7 LAN port

This eight-pin RJ-45 LAN port supports a standard Ethernet cable for connection to a local network.

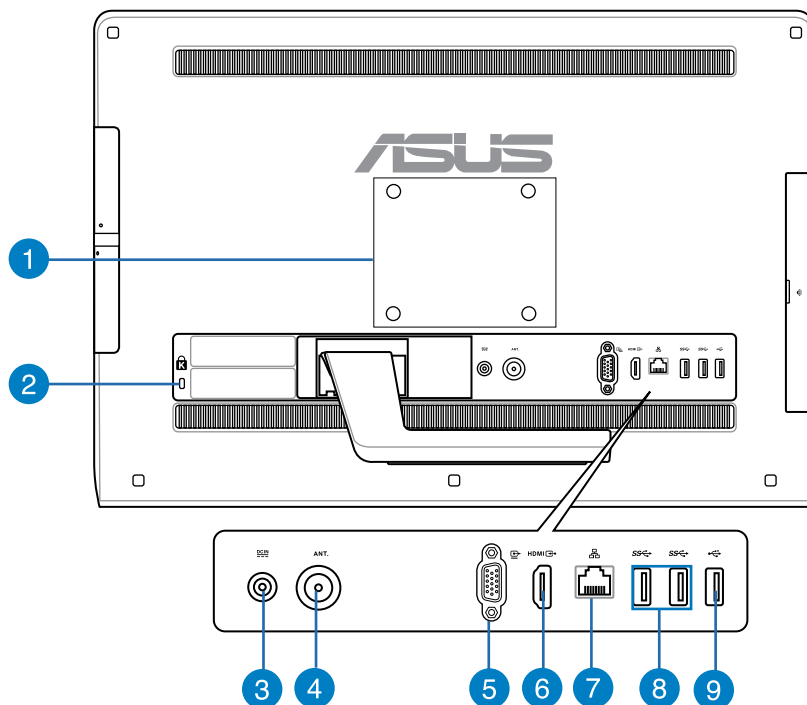
8 USB 3.0 ports

These USB (Universal Serial Bus) ports provide a transfer rate of up to 5Gbit/s and are backward compatible with USB2.0.

9 USB 2.0 port

This USB (Universal Serial Bus) port is compatible with USB 2.0 or USB 1.1 devices such as keyboards, pointing devices, flash disk drives, external HDDs, speakers, cameras and printers.

ET2020IN Series

**1 Wall mount holes**

Secure the four wall mount screws into these holes to mount your All-in-One PC to a wall.

NOTE: All ET2020 Series models are shipped with wall mount screws.

2 Kensington® lock hole

The Kensington® lock hole allows you to secure your PC using Kensington® compatible PC security products.

3 Power input

The supplied power adapter converts AC power to DC power for use with this jack. To prevent damage to the PC, always use the supplied power adapter.

WARNING! The power adapter may get warm or hot when in use. Do not cover the adapter and keep it away from your body.

4 Antenna socket (Optional)

Connect standard indoor or outdoor male antenna connectors to receive over-the-air broadcast TV signals.

NOTE: The antenna socket is available for models with the optional TV Tuner card.

5 Video Graphics Adapter (VGA) Port

A VGA port is available for connecting additional VGA monitors or displays.

6 HDMI Output Port

Connect this port with devices equipped with an HDMI input port, such as an LCD monitor or projector.

7 LAN port

This eight-pin RJ-45 LAN port supports a standard Ethernet cable for connection to a local network.

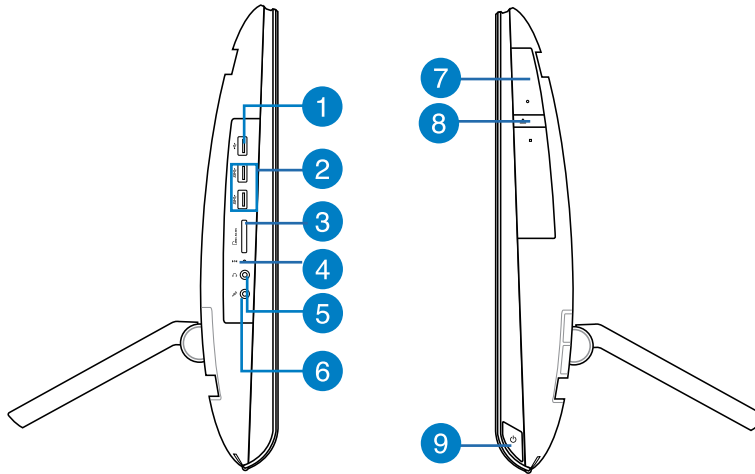
8 USB 3.0 ports

These USB (Universal Serial Bus) ports provide a transfer rate of up to 5Gbit/s and are backward compatible with USB2.0.

9 USB 2.0 port

This USB (Universal Serial Bus) port is compatible with USB 2.0 or USB 1.1 devices such as keyboards, pointing devices, flash disk drives, external HDDs, speakers, cameras and printers.

Side view



1

USB 2.0 port

This USB (Universal Serial Bus) port is compatible with USB 2.0 or USB 1.1 devices such as keyboards, pointing devices, flash disk drives, external HDDs, speakers, cameras and printers.

2

USB 3.0 ports

These USB (Universal Serial Bus) ports provide a transfer rate of up to 5Gbit/s and are backward compatible with USB2.0.

3

6-in-1 Memory card reader

This All-in-One PC has a single built-in memory card reader slot that supports MS, MS-Pro, MMC, SD, SDXC, and SDHC formats.

4

Quick BIOS access button

Use a paper clip or pointed object to press this button before powering up the All-in-One PC. The system will launch immediately into the BIOS Setup on boot.

5 Headphone jack

The stereo headphone jack (3.5mm) is used to connect the system's audio out signal to headphones. Using this jack automatically disables the built-in speakers.

6 Microphone jack

The microphone jack is designed to connect to a microphone used for video conferencing, voice narrations, or simple audio recordings.

7 Optical Drive

The built-in optical drive may support compact discs (CD), digital video discs (DVD), and/or Blu-ray discs (BD) and may have recordable (R) or re-writable (RW) capabilities. See the marketing specifications for details on each model.

8 Optical Drive Electronic Eject button

The optical drive eject has an electronic eject button for opening the tray. You can also eject the optical drive tray through any software player or by right clicking the optical drive in Windows "Computer" and selecting Eject.

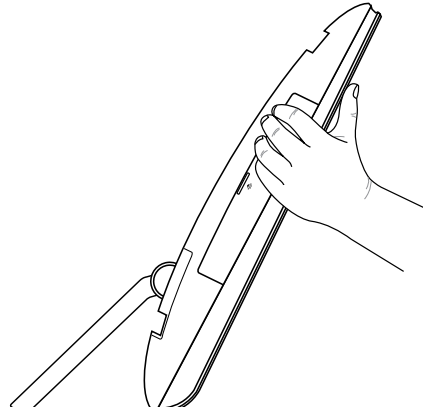
9 Power button

Press this button to turn on your All-in-One PC.

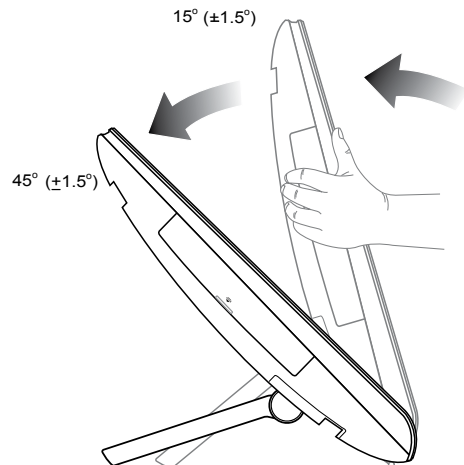
Chapter 2: Using your All-in-One PC

Positioning your All-in-One PC

1. Pull out the stand at the back of the All-in-One PC then place the device on a flat stable surface.



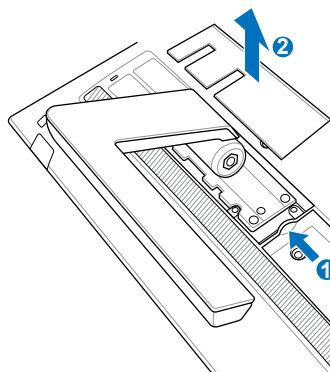
2. Gently push the display panel until the hinge makes a **click** sound. You need to push the display panel up to a 45° angle to ensure that your All-in-One PC can stand upright in a stable position.



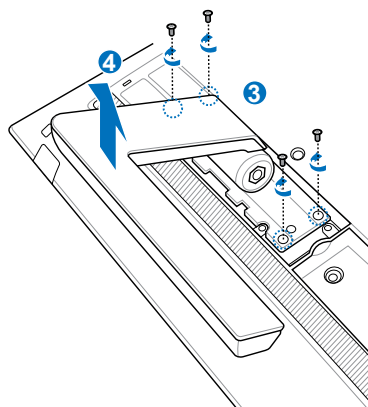
Mounting to the wall

To mount your ASUS All-in-One PC to the wall, you will need the included wall mount screws and a VESA 100-compliant wall mount kit.

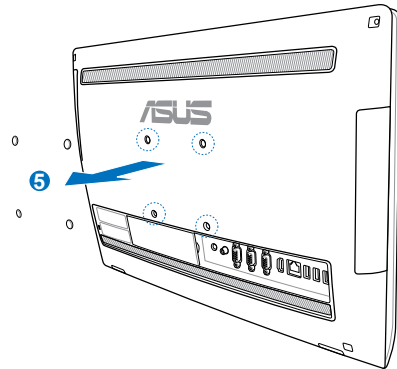
1. Place the All-in-One PC face-down, resting the display panel on a flat even surface.
2. Remove the hinge cover.



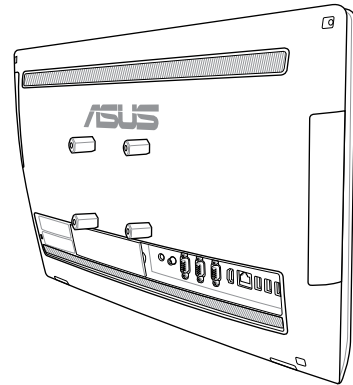
3. Remove the four screws securing the stand in place and save for future reinstallation. Remove the stand.
4. Replace the hinge cover.



5. Remove the four rubber covers from the rear panel holes.



6. Mount the All-in-One PC onto a firm wall by using a standard wall mount kit (pad and rack) to the wall mount screws. Follow the instructions described in the installation manual that came with your wall mount kit.



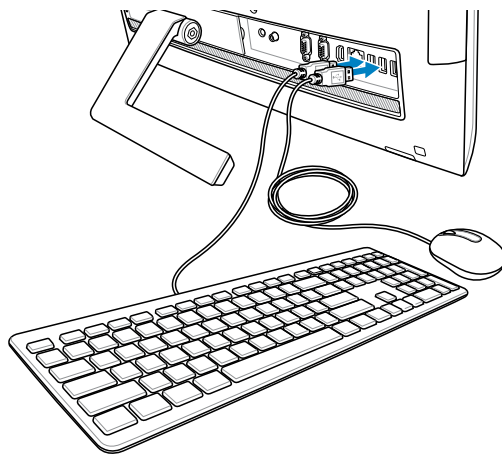
IMPORTANT!

- For proper ventilation, position the All-in-One PC at least 6cm from the wall.
 - The wall mount kit should comply with VESA standards.
 - To ensure safety, please read the wall mount kit installation manual carefully before mounting your All-in-One PC to the wall.
 - At least two people are required to mount or unmount the All-in-One PC from a wall for safety and to prevent damage to the product. A qualified professional is recommended.
 - The wall should be able to sustain four times the weight of the All-in-One PC and wall mount components (a minimum of 36kg). The mounting location must be able to withstand earthquakes or intense vibrations from passing trains or typhoons. Cement, stone, or brick walls are recommended.
-

Setting up your All-in-One PC

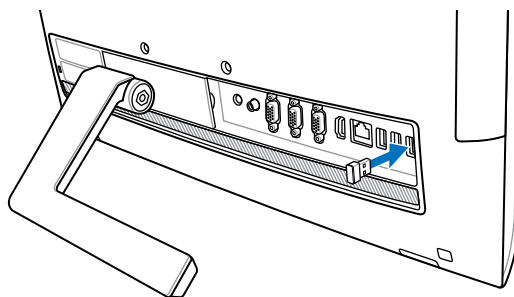
Connecting a wired keyboard and mouse

Connect the keyboard and the mouse to the USB ports on the rear panel. You may also connect the keyboard and mouse to the USB ports on the left side of the panel if the keyboard cable is not long enough.



Connecting a wireless keyboard and mouse

1. Install batteries into the wireless keyboard and mouse.
2. Connect the wireless dongle for keyboard and mouse to a USB port.
3. You can begin using the wireless keyboard and mouse.

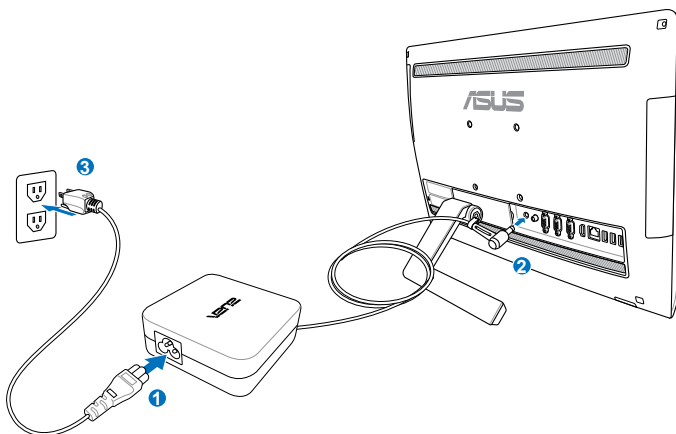


NOTES:

- Reconnect the wireless keyboard and mouse with the wireless dongle if they lose connection. Avoid using either devices alongside other wireless devices. Position the mouse and keyboard at least 20 cm away from other wireless hardware to avoid interference.
- The illustrations above are for reference only. Actual hardware and specifications of the optional wired or wireless keyboard and mouse vary.

Turning your All-in-One PC on

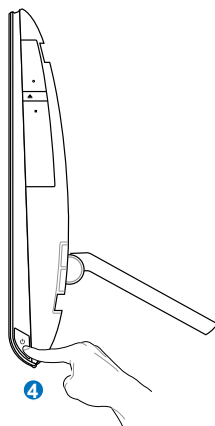
Connect the supplied AC adapter to the **DC IN** jack on the rear panel (1 2 3) and then press the **Power button** on the right side (4) of the All-in-One PC to turn on the system.



WARNING! DO NOT connect the AC power cord to an AC outlet prior to connecting the DC plug to the system. Doing so may damage the AC-DC adapter.

NOTE:

- The input voltage of the adapter is 100Vac~240Vac.
- It is recommended that the power socket is in close proximity to the All-in-One PC.



NOTE: For details on turning off your All-in-One PC, refer to the section *Turning off your All-in-One PC* under *Working with Windows® 8*.

Gestures

The gestures allow you to launch programs and access the settings of your All-in-One PC. The functions can be activated by using the hand gestures to your All-in-One PC's display panel.

Using gestures

Left edge swipe



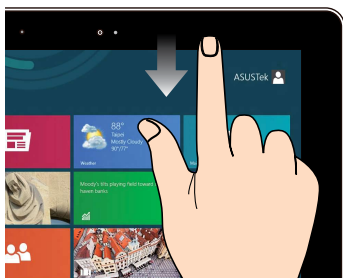
Swipe from the left edge of the screen to shuffle your running apps.

Right edge swipe



Swipe from the right edge of the screen to launch the Charm bar.

Top edge swipe



- In the Start screen, swipe from the top edge of the screen to view the All Apps bar.
- In a running app, swipe from the top edge of the screen to view its menu.

Finger slide



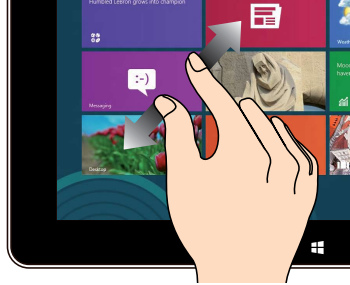
Slide your finger to scroll up and down and slide your finger to pan the screen left or right.

Zoom out



Bring together your two fingers on the touch panel.

Zoom in



Spread apart your two fingers on the touch panel.

Tap and hold



- To move an app, tap and hold the app tile and drag it to a new location.
- To close an app, tap and hold the top side of the running app and drag it down to the bottom of the screen to close it.

Tap/Double tap



- Tap an app to launch it.
- On Desktop mode, double-tap an item to launch it.

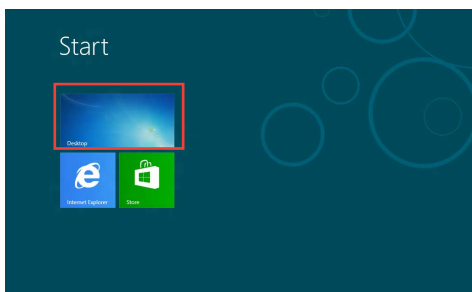
Configuring the audio output using an HDMI device

If you want to use a high-definition TV as an audio output device, connect the TV to the All-in-One PC using HDMI and follow the steps below to configure the audio settings.

To configure the audio output using an HDMI device:

1. From the Start screen, click **Desktop** to launch the Desktop Mode.

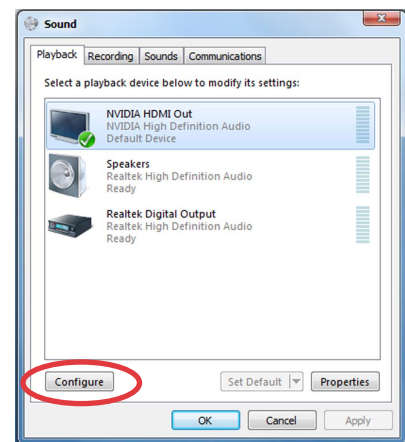
NOTE: For more details, refer to the section *Start screen* under *Working with Windows® 8*.



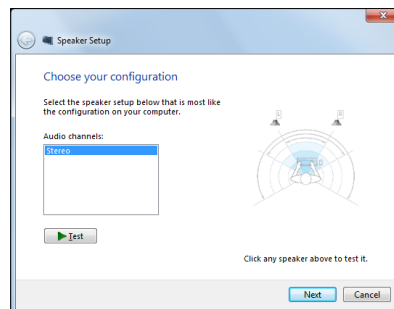
2. Right-click the Volume Mixer icon on the Windows® taskbar and click **Playback devices**.



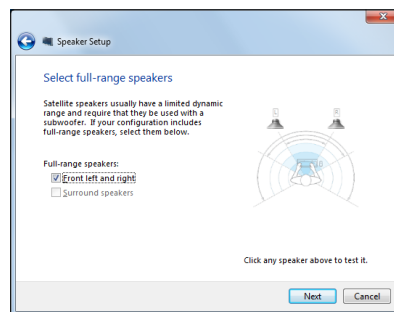
3. From the Playback screen, select **Digital Audio (HDMI)**.
4. Click **Configure** and the Speaker Setup window pops up.



5. Select **Stereo** and click **Next**.



6. Tick the **Front left and right** option, and click **Next**.
7. Click **Finish** to exit the speaker setup.



Chapter 3: Working with Windows® 8

System requirements

Processor	1GHz or faster
RAM	1GB (32-bit) or 2 GB (64-bit)
Hard disk space	16 GB (32-bit) or 20 GB (64-bit)
Graphics card	Microsoft DirectX9 graphics device with WDDM driver
Screen resolution	1024 x 768 for Windows® apps
	1366 x 768 for Snap feature

NOTE: For updates on these system requirements, visit:
<http://www.windows.microsoft.com/en-us/windows-8/faq>

Starting for the first time (For Windows® 8 and Windows® 8 Professional)

When you start your computer for the first time, a series of screens appear to guide you in configuring the basic settings of your Windows® 8 operating system.

To start for the first time:

1. Press the power button on your All-in-One PC. Wait for a few minutes until the setup screen appears.
2. Select a language to use on your All-in-One PC.
3. Carefully read the License Terms. Tick **I accept the terms for using Windows** then click **Accept**.
4. Follow the onscreen instructions to configure the following basic items:
 - Personalize
 - Wireless
 - Settings
 - Sign in to your PC
5. Once you are done configuring the basic items, a Windows®8 tutorial appears. Watch this to learn more about Windows®8 functionalities.
6. The Start screen appears after successfully signing in to your user account.

Windows® 8 lock screen

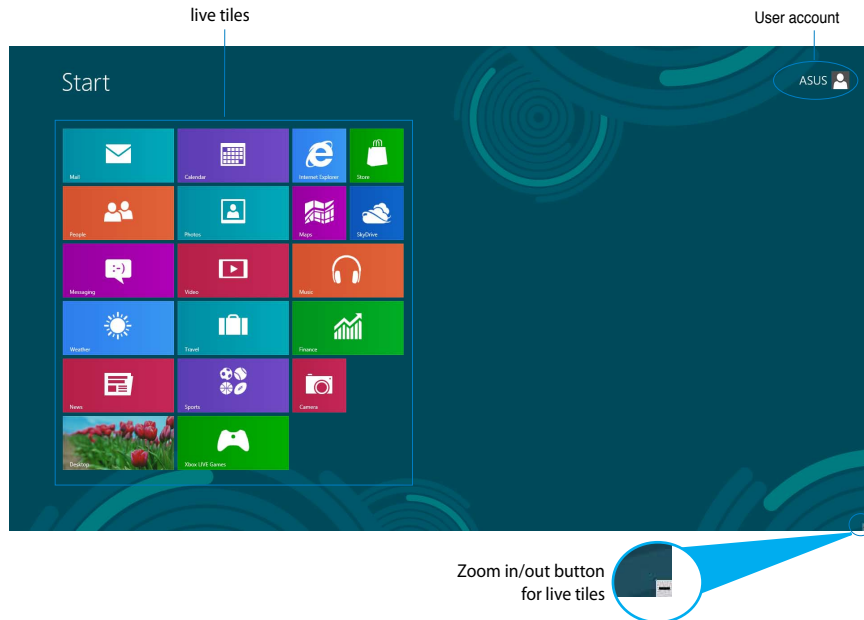
The Windows®8 lock screen may appear when your All-in-One PC enters the Windows®8 operating system. To proceed, tap on the lock screen or press any key on your All-in-One PC's keyboard.

Windows® UI

The Windows® User Interface (UI) is the tile-based display used in Windows® 8. It includes the following features you can use while working on your All-in-One PC.

Start screen

The Start screen appears after successfully signing in to your user account. It helps organize all the programs and applications you need in just one place.



Windows® apps

These are apps pinned on the Start screen and displayed on tiled-format for easy access.

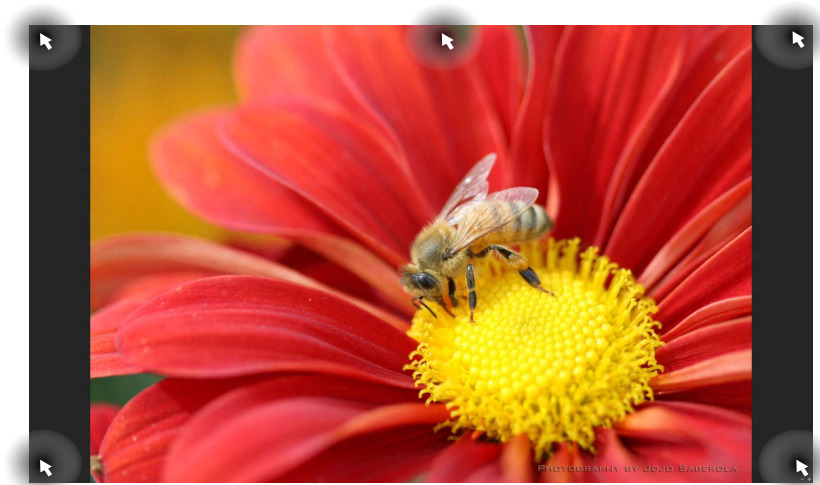
IMPORTANT! A screen resolution of 1024 x 768 pixels or higher is required to run Windows® apps.

NOTE: Some apps require signing in to your Microsoft account before they are fully launched.

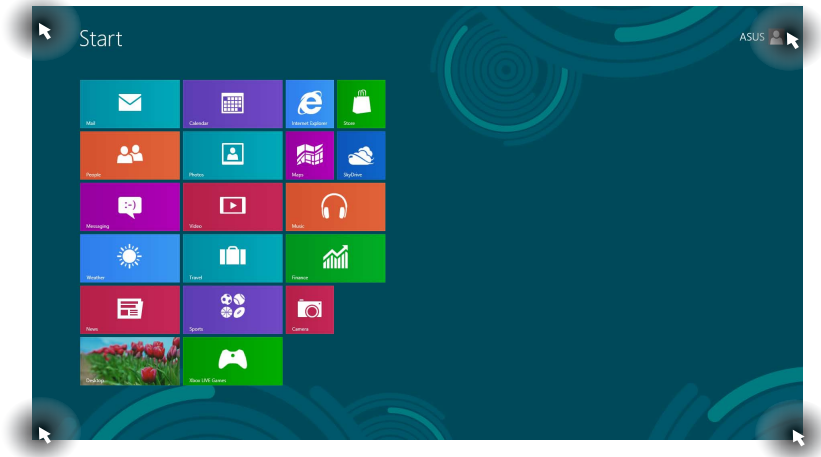
Hotspots

Onscreen hotspots allow you to launch programs and access the settings of your PC. The functions in these hotspots can be activated using your mouse.


Hotspots on a running app



Hotspots on the Start screen



NOTE: Refer to the next page for the Hotspots' functions.

Hotspot	Action
upper left corner	<p>Hover your mouse pointer then tap on the recent app's thumbnail to revert back to that running app.</p> <p>If you launched more than one app, slide down to show all running apps.</p>
lower left corner	<p>From a running app screen:</p> <p>Hover your mouse pointer then tap on the Start screen's thumbnail to go back to the Start screen.</p> <p>NOTE: You can also press the Windows key  on your keyboard to go back to the Start screen.</p> <p>From the Start screen:</p> <p>Hover your mouse pointer then tap on the running app's thumbnail to go back to that app.</p> <p>Hover your mouse pointer then click on the recent app's thumbnail to go back to that app.</p>
top	<p>Hover your mouse pointer until it changes to a hand icon. Drag then drop the app to a new location.</p> <p>NOTE: This hotspot function only works on a running app or when you want to use the Snap feature. For more details, refer to <i>Snap feature</i> under <i>Working with Windows® apps</i>.</p>
upper and lower right corner	<p>Hover your mouse pointer to launch the Charm bar.</p>

Working with Windows® apps

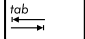
Use your All-in-One PC's touchscreen or keyboard to launch and customize your apps.

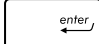
Launching apps



Tap an app to launch it.



1. Press  twice then use the arrow keys to browse through the apps.

2. Press  to launch your selected app.

Customizing apps

You can move, resize, or unpin apps from the Start screen using the following steps.



Moving apps



Tap and hold the app tile and drag it to a new location.


Resizing apps



Swipe down the app tile to select and launch its settings bar. Tap  to reduce or tap  to enlarge an app.

Unpinning apps



Swipe down the app tile to select and launch its settings bar. Tap  to unpin an app.

Closing apps



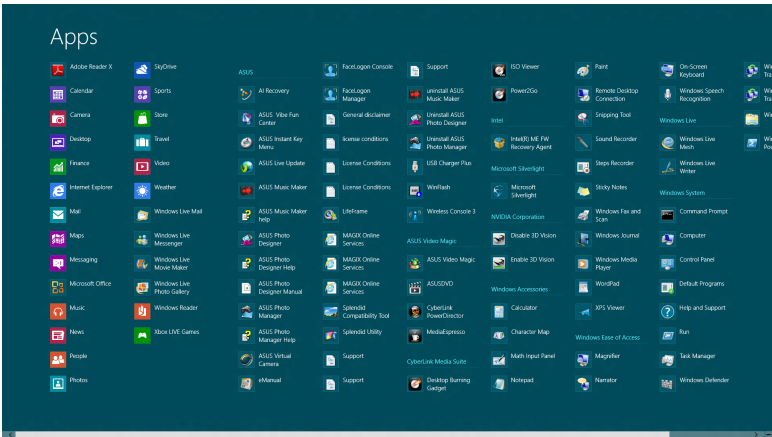
Tap and hold the top side of the running app then drag it down to the bottom of the screen to close it.



From the running app's screen, press **alt** + **f4**.

Accessing All Apps


Aside from the apps already pinned on your Start screen, you can also open other applications like the exclusive ASUS Software apps bundled with your All-in-One PC through the Apps screen.




Launching the Apps screen

Launch the Apps screen using your All-in-One PC's touchscreen or keyboard.




- 1. Swipe down the app tile to select and launch its settings bar.
- 2. Tap  to show all installed apps in your All-in-One PC.



From the Start screen, press **Windows key** + **Z** to select the All Apps icon  then press **enter**.

Pinning more apps on the Start screen

You can pin more apps on the Start screen using your touchscreen.

1. Swipe down the app tile to select and launch its settings bar.
2. Tap  to pin the selected app to the Start screen.

Charm bar

The Charm bar is a toolbar that can be triggered on the right side of your screen. It consists of several tools that allow you to share applications and provide quick access for customizing the settings of your All-in-One PC.





Launching the Charm bar

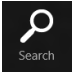
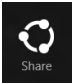
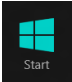
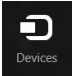
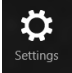
NOTE: When called out, the Charm bar initially appears as a set of white icons. The image above shows how the Charm bar looks like once activated.

Use your All-in-One PC's touchscreen or keyboard to launch the Charm bar.

1. Swipe the right edge of the screen.

2. Press  + .

Inside the Charm bar

	Search This tool allows you to look for files, applications, or programs in your All-in-One PC.
	Share This tool allows you to share applications via social networking sites or email.
	Start This tool reverts the display back to the Start screen. From the Start screen, you can also use this to revert back to a recently opened app.
	Devices This tool allows you to access and share files with the devices attached to your All-in-One PC such as an external display or printer.
	Settings This tool allows you to access the PC settings of your All-in-One PC.

Snap feature

The Snap feature displays two apps side-by-side, allowing you to work or switch between apps.

IMPORTANT! Ensure that your All-in-One PC's screen resolution is set to 1366 x 768 pixels or higher before using the Snap feature.



Snap bar




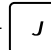
Using Snap

Perform the following steps to activate Snap using your All-in-One PC's touchscreen or keyboard.



1. Launch the app you wish to snap.
2. Hover the mouse point on the top side of your screen.
3. Once the pointer changes to a hand icon, drag then drop the app to the left or right side of the display panel.
4. Launch another app.



1. Launch the app you wish to snap.
2. Press  + .
3. To switch between apps, press  + .

Other keyboard shortcuts

Using the keyboard, you can also use the following shortcuts to help you launch applications and navigate Windows®8.



Switches between the Start screen and the last running app



Launches the desktop



Launches the Computer window on Desktop mode



Opens the File search pane



Opens the Share pane



Opens the Settings pane



Opens the Devices pane



Activates the Lock screen



Minimizes the Internet Explorer window




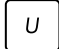

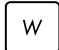



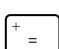




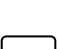

Opens the Second screen pane



Opens the Apps search pane







Opens the Run window

 + 	Opens Ease of Access Center
 + 	Opens the Settings search pane
 + 	Opens a menu box of Windows tools
 + 	Launches the magnifier icon and zooms in your screen
 + 	Zooms out your screen
 + 	Opens the Narrator Settings
 + 	Enables the print screen function

Turning your All-in-One PC off


Do either of the following to shut down your All-in-One PC:


-  Tap from  the Charm bar then tap  > **Shut down** to do a normal shutdown.
- From the log-in screen, tap  > **Shut down**.
- If your All-in-One PC is unresponsive, press and hold the power button for at least four (4) seconds until your All-in-One PC turns off.

Chapter 4: Connecting to the Internet

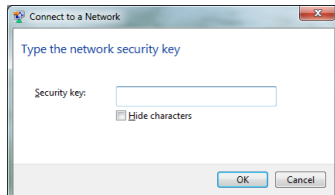
Access emails, surf the Internet, and share applications via social networking sites on or from your PC using wireless/Wi-Fi or wired connection.


Setting up a Wi-Fi connection in Windows® 7

1. Click the wireless network icon with an orange star  in the Windows® Notification area.
2. Select the wireless access point you want to connect to from the list and click **Connect** to build the connection.

IMPORTANT! If you cannot find the desired access point, click the **Refresh** icon  on the upper right corner to refresh and search in the list again.


NOTE: Enter the network security key when connecting to a secure network.



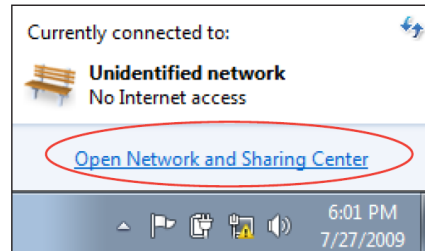
3. After a connection has been established, the connection is shown on the list.
4. You can see the wireless network icon  in the Notification area.

Configuring a Wired connection in Windows® 7

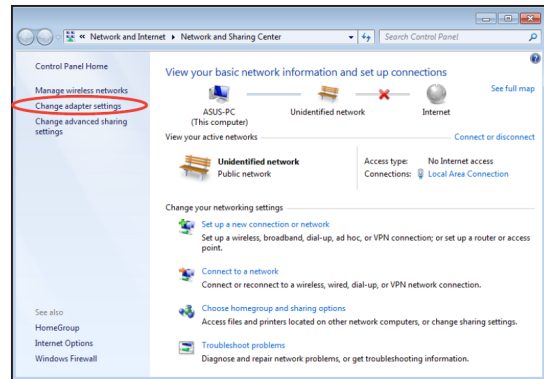
Using a Static IP Address

1. Click the network icon with a yellow warning triangle  in the Windows® Notification area and select **Open Network and Sharing Center**.

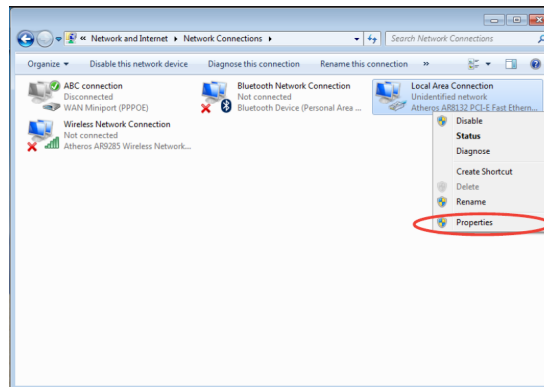
NOTE: Ensure that you have connected the LAN cable to the All-in-One PC.



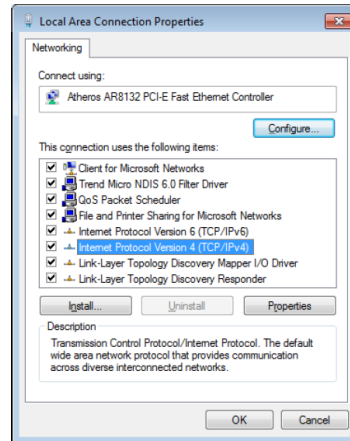
2. Click **Change adapter settings** in the left pane.



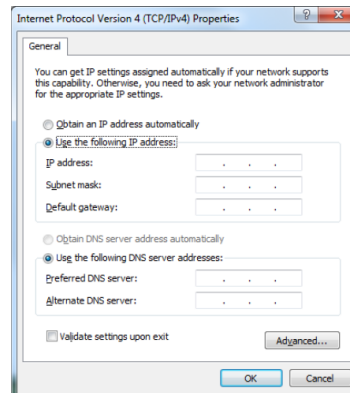
3. Right-click **Local Area Connection** and select **Properties**.



4. Click **Internet Protocol Version 4 (TCP/IPv4)** and click **Properties**.

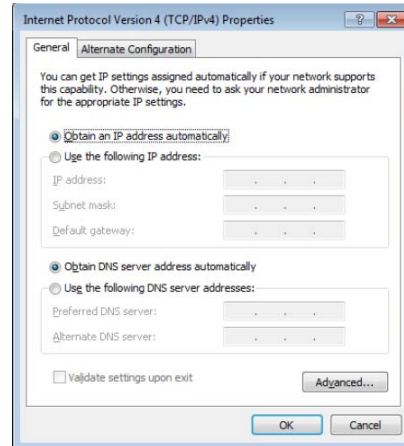


5. Select **Use the following IP address**.
6. Enter your **IP address**, **Subnet mask**, and **Default gateway**.
7. If needed, enter the **Preferred DNS server** address.
8. After entering all the related values, click **OK** to finish the configuration.



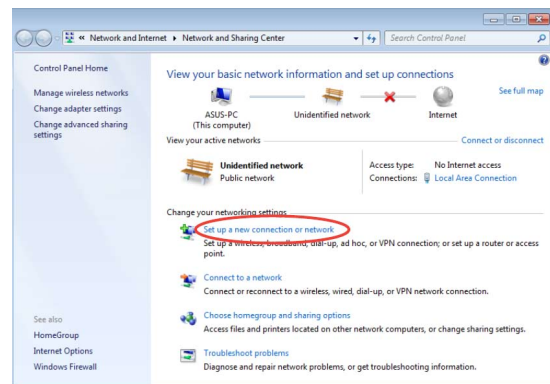
Using a Dynamic IP Address (PPPoE)

1. Repeat steps 1-4 from the previous section.
2. Select **Obtain an IP address automatically** and click **OK**.

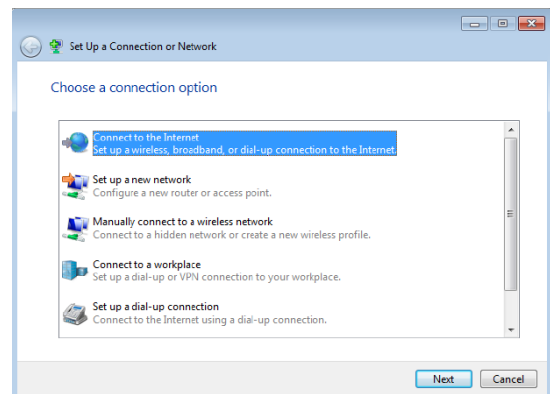


(Continue the following steps if using PPPoE)

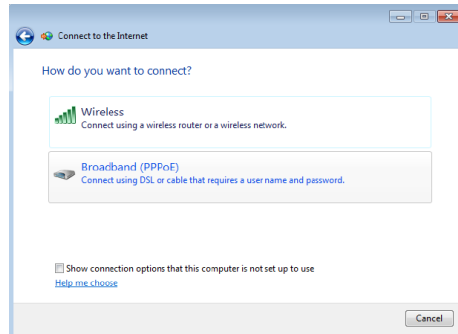
3. Return to the **Network and Sharing Center** and then click **Set up a new connection or network**.



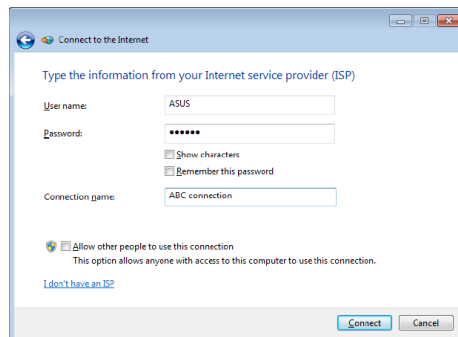
4. Select **Connect to the Internet** and click **Next**.



5. Select **Broadband (PPPoE)** and click **Next**.



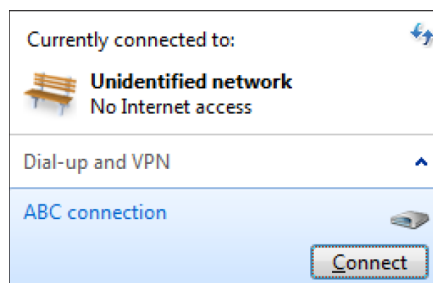
6. Enter the User name, Password, and Connection name. Click **Connect**.



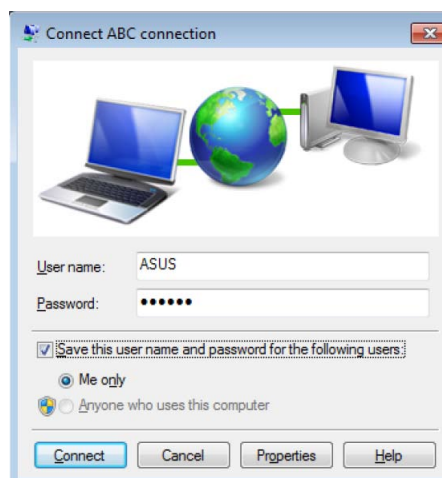
7. Click **Close** to finish the configuration.



8. Click the network icon in the notification area and click the connection you just created.



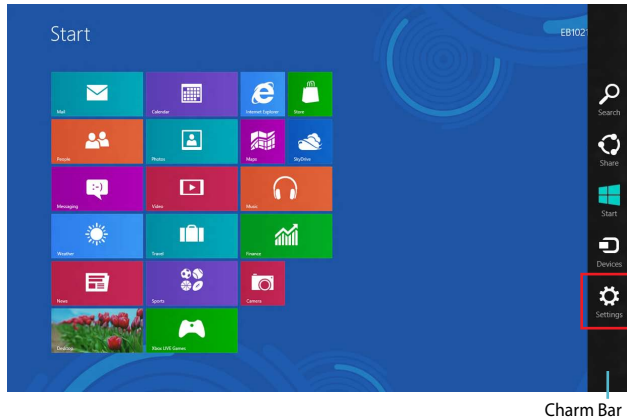
9. Enter your user name and password. Click **Connect** to connect to the Internet.




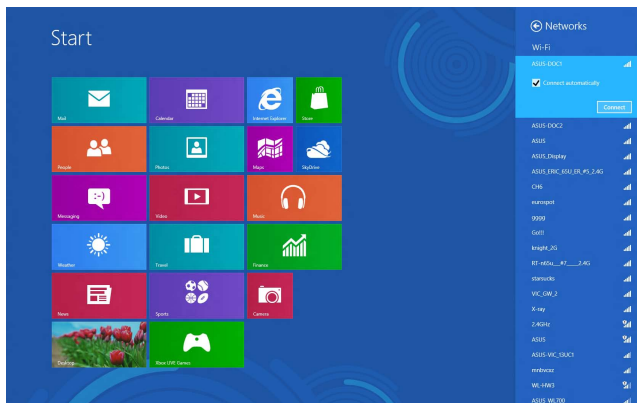
Setting up a Wi-Fi connection in Windows® 8

1. Launch the Charm bar from the Start screen or from any application mode.

NOTE: For details, refer to the section *Charm bar* under *Working with Windows® apps*.



2. From the Charm bar, select **Settings** and click the network icon .
3. Select the wireless network that you want to connect to from the list.
4. Click **Connect**.



NOTE: You may be prompted to enter a security key to connect to a secured wireless network.

Setting up a Wired connection in Windows® 8

1. Use a network (RJ-45) cable to connect your All-in-One PC to a DSL/cable modem or a local area network (LAN).
2. Turn on your computer.
3. Configure the necessary Internet connection settings.

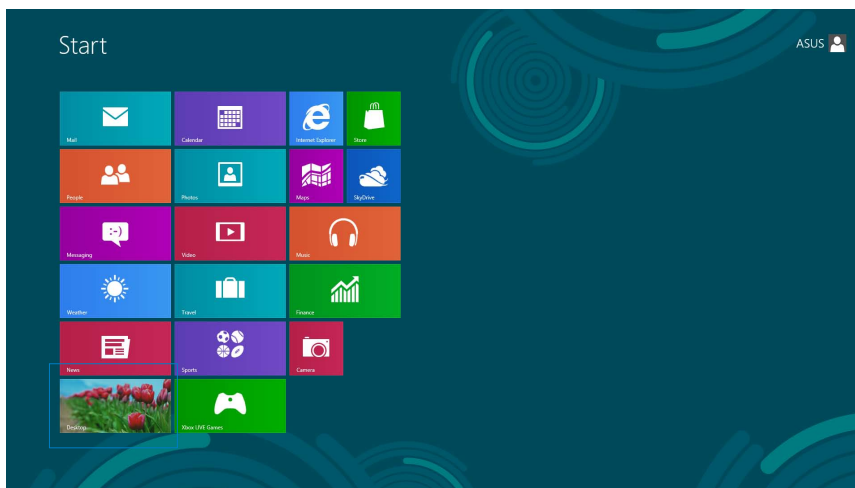
NOTES:


- For more details, refer to the sections *Configuring a dynamic IP/PPPoE network connection* or *Configuring a static IP network connection*.
- Contact your Internet Service Provider (ISP) for details or assistance in setting up your Internet connection.

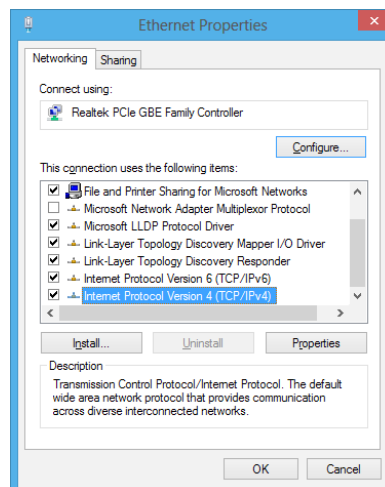
Configuring a dynamic IP/PPPoE network connection

To configure a dynamic IP/PPPoE or static IP network connection:

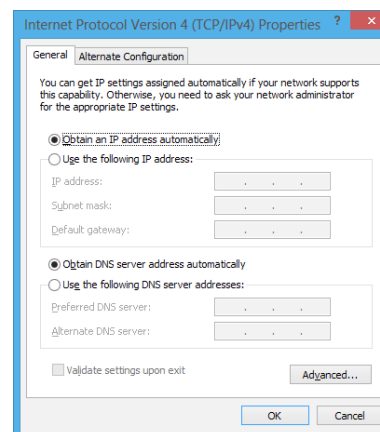
1. From the Start screen, click **Desktop** to launch the Desktop mode.



2. From the Windows® taskbar, right-click the network icon  and click **Open Network and Sharing Center**.
3. From the Open Network and Sharing Center screen, click **Change Adapter settings**.
4. Right-click on your LAN and select **Properties**.
5. Click **Internet Protocol Version 4(TCP/IPv4)** and click **Properties**.

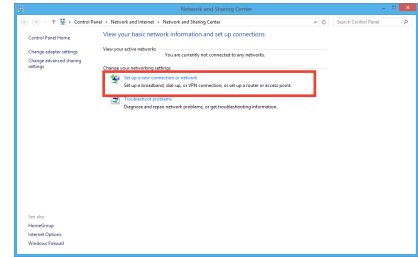


6. Click **Obtain an IP address automatically** and click **OK**.

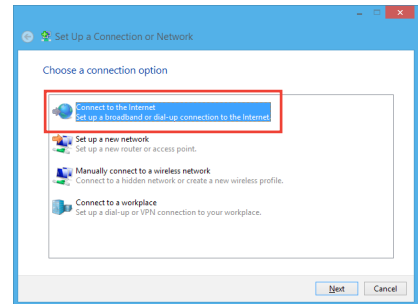


NOTE: Continue to the next steps if you are using PPPoE connection.

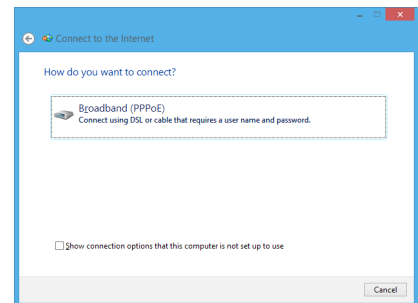
7. Return to the **Network and Sharing Center** and then click **Set up a new connection or network**.



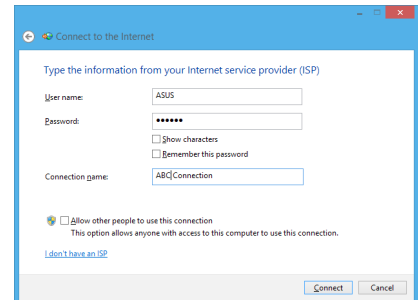
8. Select **Connect to the Internet** and click **Next**.



9. Select **Broadband (PPPoE)** and click **Next**.



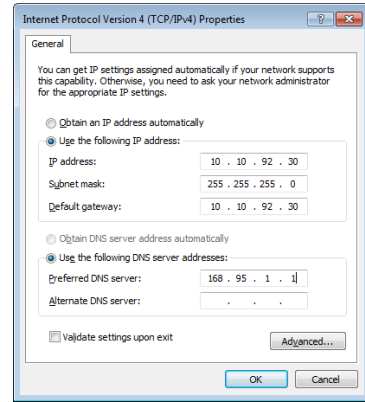
10. Enter your **Username**, **Password**, and **Connection name**. Click **Connect**.
11. Click **Close** to finish the configuration.
12. Click the network icon in the taskbar and click the connection you just created.
13. Enter your user name and password. Click **Connect** to connect to the Internet.



Configuring a static IP network connection

To configure a static IP network connection:

1. Repeat steps 1 to 4 of the previous section
Configuring a dynamic IP/PPPoE network connection.
2. Click **Use the following IP address.**
3. Enter the IP address, Subnet mask and Gateway from your service provider.
4. If needed, enter the preferred DNS Server address and alternative address.
5. When done, click **OK**.



Chapter 5: Recovering your system

Entering the BIOS Setup

BIOS (Basic Input and Output System) stores system hardware settings that are needed for system startup in the PC.

In normal circumstances, the default BIOS settings apply to most conditions to ensure optimal performance. Do not change the default BIOS settings except in the following circumstances:

- An error message appears on the screen during the system bootup and requests you to run the BIOS Setup.
- You have installed a new system component that requires further BIOS settings or update.

WARNING! Inappropriate BIOS settings may result to instability or boot failure. We strongly recommend that you change the BIOS settings only with the help of a trained service personnel.

Enter the BIOS

Press F2 immediately after your turn on the All-in-One PC to enter the BIOS

Quickly enter the BIOS

Windows® 8 boot time is quite fast, so we developed these ways for you to quickly access the BIOS:

- Use a paper clip or pointed object to press the Quick BIOS Access button before powering up the All-in-One PC. The system will launch immediately into the BIOS Setup on boot.
- With your system running, use a paper clip or pointed object to press the Quick BIOS Access button. Restart the the All-in-One PC and the system will launch immediately into the BIOS Setup.

NOTE: For the location of the Quick BIOS Access button, refer to the section *Getting to know your All-in-One PC*.

Using the Recovery Partition in Windows® 7

Recovering the OS to the Factory Default Partition (F9 Recovery)

1. Press [F9] during bootup.
2. Select **Windows setup [EMS Enabled]** when this item appears and press [Enter].
3. Select the language and click **Next**.
4. Select **Recover the OS to the Default Partition** and click **Next**.
5. The factory default partition will be displayed. Click **Next**.
6. Data on the default partition will be cleared. Click **Recover** to start the system recovery.

IMPORTANT! You will lose all your data on the selected partition. Ensure to back up your important data beforehand.

7. When the recovery is completed successfully, click **Reboot** to restart the system.

Backing up the Factory Default Environment Data to a USB Drive (F9 Backup)

1. Repeat steps 1-3 in the previous section.
2. Select **Backup the Factory Environment to a USB Drive** and click **Next**.
3. Connect a USB storage device to your PC to start the Factory Default Environment backup.

NOTE: The required size of the connected USB storage device should be larger than 20GB. The actual size may vary with your PC model.

4. Select the desired USB storage device if more than one USB storage device is connected to your All-in-One PC and click **Next**.

NOTE: If there is already a partition with the right size in the selected USB storage device (for example, a partition that has been used as the backup partition), the system will show this partition automatically and reuse it for backup.

5. Based on your selections from the previous step, data on the selected USB storage device or on the selected partition will be cleared. click **Backup** to start backup.

IMPORTANT! You will lose all your data on the selected USB storage device or on the selected partition. Ensure to back up your important data beforehand.

6. When backing up the factory default environment is completed successfully, click **Reboot** to restart the system.

Using the USB storage device (USB Restore)

When the Recovery Partition in your system has crashed, use the USB storage device to restore the system to the factory default partition or the factory environment data to the entire hard disk.

1. Connect the USB storage device that you backed up the factory environment data to.
2. Press <ESC> on bootup and the **Please select boot device** screen appears.
Select USB: XXXXXX to boot from the connected USB storage device.
3. Select the language and click **Next**.
4. Select **Restore** and click **Next**.
5. Select a task and click **Next**. Task options:

Restore the OS to the Default Partition only

Select this option if you simply want to restore the OS to the factory default partition. This option deletes all data on the system partition "C" and keeps the partition "D" unchanged.

After you click **Next**, the factory default partition will be displayed. Click **Next** again.

Restore the whole hard disk

Select this option if you want to restore your All-in-One PC to its factory default state. This option deletes all data from your hard disk and creates a new system partition as drive "C", an empty partition as drive "D", and a Recovery Partition.

6. Data on the factory default partition or on the whole hard disk will be cleared depending on the option you selected in the previous step. Click **Restore** to start the task.
7. When restoration is complete, click **Reboot** to restart the system.

Resetting your All-in-One PC in Windows® 8

The **Reset your PC** option restores your PC to its factory default settings.

IMPORTANT! Back up all your data before using this option.

To reset your All-in-One PC:

1. If your All-in-One PC is off, press the power button to turn on your All-in-One PC.
If your All-in-One PC is already on, launch the Windows® 8 Charm bar then go to **Settings** > **Change PC settings** > **General**. From the **General** pane, scroll down to **Advanced startup** and tap or tap or click **Restart now**.
2. Press <F9> during bootup.
3. From the screen, tap or click **Troubleshoot**.
4. Select **Reset your PC**.
5. Tap or click **Next**.
6. Select **Only the drive where the Windows is installed**.
7. Select **Just remove my files**.
8. Tap or click **Reset**.

Recovering from a system image file in Windows® 8

You can create a USB recovery drive and use this to recover your PC's settings.

Creating a USB recovery drive

WARNING! All files on your USB storage device will be permanently deleted during the process. Before you proceed, ensure that you back up all your important data.

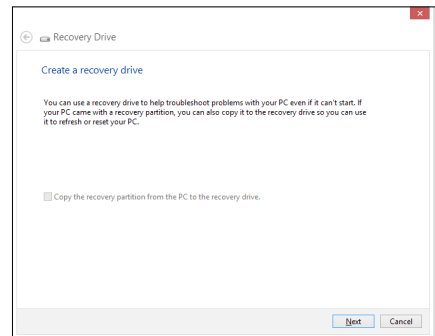
To create a USB recovery drive:

1. Launch the Control Panel from the All Apps screen.

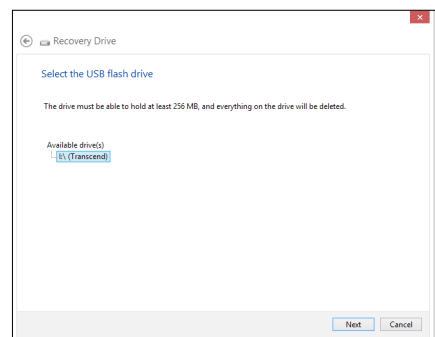
NOTE: For details, refer to *Launching the All Apps screen under Working with Windows® apps*.

2. From the Control Panel's System and Security, click **Find and fix problems**.
3. Tap or click **Recovery** > **Create a recovery drive**.
4. Tap or click **Next**.

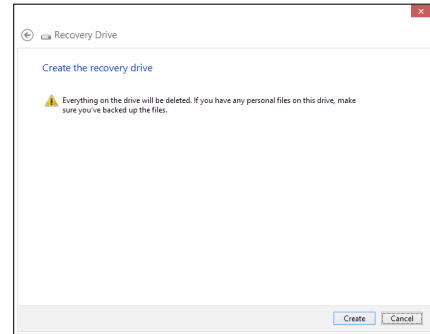
NOTE: If the check box is not ticked, no device drivers and apps will be installed in the recovery device.



5. Select the USB storage device where you want to copy the recovery files.
6. Click **Next**.



- Click **Create**. Wait for a while for the process to complete.
- When the process is completed, click **Finish**.



Removing everything and reinstalling Windows® 8

Restoring your PC to its original factory settings can be done using the Remove everything and reinstall option in PC Settings. Refer to the steps below to use this option.

IMPORTANT! Back up all your data before using this option.

NOTE: This process may take a while to complete.

- Launch the Charm bar.
- Click **Settings > Change PC Settings > General**.
- Scroll down to view the Remove everything and reinstall Windows option. Under this option, click **Get Started**.
- Follow the onscreen instructions to complete the reinstallation and reset process.

Appendices

Notices

REACH

Complying with the REACH (Registration, Evaluation, Authorization, and Restriction of Chemicals) regulatory framework, we publish the chemical substances in our products at ASUS REACH website at <http://csr.asus.com/english/REACH.htm>

ASUS Recycling/Takeback Services

ASUS recycling and takeback programs come from our commitment to the highest standards for protecting our environment. We believe in providing solutions for you to be able to responsibly recycle our products, batteries, other components, as well as the packaging materials. Please go to <http://csr.asus.com/english/Takeback.htm> for the detailed recycling information in different regions.

COATING NOTICE

IMPORTANT! To provide electrical insulation and maintain electrical safety, a coating is applied to insulate the device except on the areas where the I/O ports are located.

Federal Communications Commission Statement

This device complies with Part 15 of the FCC Rules. Operation is subject to the following two conditions:

- This device may not cause harmful interference, and
- This device must accept any interference received including interference that may cause undesired operation.

This equipment has been tested and found to comply with the limits for a Class B digital device, pursuant to Part 15 of the FCC Rules. These limits are designed to provide reasonable protection against harmful interference in a residential installation. This equipment generates, uses and can radiate radio frequency energy and, if not installed and used in accordance with manufacturer's instructions, may cause harmful interference to radio communications. However, there is no guarantee that interference will not occur in a particular installation. If this equipment does cause harmful interference to radio or television reception, which can be determined by turning the equipment off and on, the user is encouraged to try to correct the interference by one or more of the following measures:

- Reorient or relocate the receiving antenna.
- Increase the separation between the equipment and receiver.

- Connect the equipment to an outlet on a circuit different from that to which the receiver is connected.
- Consult the dealer or an experienced radio/TV technician for help.

CAUTION: Any changes or modifications not expressly approved by the guarantee of this device could void the user's authority to operate the equipment.

RF exposure warning

This equipment must be installed and operated in accordance with provided instructions and the antenna(s) used for this transmitter must be installed to provide a separation distance of at least 20 cm from all persons and must not be co-located or operating in conjunction with any other antenna or transmitter. End-users and installers must be provided with antenna installation instructions and transmitter operating conditions for satisfying RF exposure compliance.

This equipment complies with FCC RF exposure limits set forth for an uncontrolled environment.

The equipment must not be co-located or operating in conjunction with any other antenna or transmitter.

Canadian Department of Communications Statement

This digital apparatus does not exceed the Class B limits for radio noise emissions from digital apparatus set out in the Radio Interference Regulations of the Canadian Department of Communications.

This class B digital apparatus complies with Canadian ICES-003.

IC Radiation Exposure Statement for Canada

This equipment complies with IC radiation exposure limits set forth for an uncontrolled environment. To maintain compliance with IC RF exposure compliance requirements, please avoid direct contact to the transmitting antenna during transmitting. End users must follow the specific operating instructions for satisfying RF exposure compliance.

Operation is subject to the following two conditions:

- This device may not cause interference and
- This device must accept any interference, including interference that may cause undesired operation of the device.

Declaration of Conformity (R&TTE directive 1999/5/EC)

The following items were completed and are considered relevant and sufficient:

- Essential requirements as in [Article 3]
- Protection requirements for health and safety as in [Article 3.1a]
- Testing for electric safety according to [EN 60950]
- Protection requirements for electromagnetic compatibility in [Article 3.1b]
- Testing for electromagnetic compatibility in [EN 301 489-1] & [EN 301 489-17]
- Effective use of the radio spectrum as in [Article 3.2]
- Radio test suites according to [EN 300 328-2]

CE Mark Warning

This is a Class B product, in a domestic environment, this product may cause radio interference, in which case the user may be required to take adequate measures.



CE marking for devices without wireless LAN/Bluetooth

The shipped version of this device complies with the requirements of the EEC directives 2004/108/EC "Electromagnetic compatibility" and 2006/95/EC "Low voltage directive".



CE marking for devices with wireless LAN/ Bluetooth

This equipment complies with the requirements of Directive 1999/5/EC of the European Parliament and Commission from 9 March, 1999 governing Radio and Telecommunications Equipment and mutual recognition of conformity.

ⓘ is for class II device.

Wireless Operation Channel for Different Domains

N. America	2.412-2.462 GHz	Ch01 through CH11
Japan	2.412-2.484 GHz	Ch01 through Ch14
Europe ETSI	2.412-2.472 GHz	Ch01 through Ch13

NO DISASSEMBLY

The warranty does not apply to the products that have been disassembled by users

Lithium-Ion Battery Warning

CAUTION: Danger of explosion if battery is incorrectly replaced. Replace only with the same or equivalent type recommended by the manufacturer. Dispose of used batteries according to the manufacturer's instructions.

No Exposure to Liquids

DO NOT expose to or use near liquids, rain, or moisture. This product is not waterproof or oil-proof.



This symbol of the crossed out wheeled bin indicates that the product (electrical, electronic equipment, and mercury-containing button cell battery) should not be placed in municipal waste. Check local regulations for disposal of electronic products.



DO NOT throw the battery in municipal waste. The symbol of the crossed out wheeled bin indicates that the battery should not be placed in municipal waste.

Global Environmental Regulation Compliance and Declaration

ASUS follows the green design concept to design and manufacture our products, and makes sure that each stage of the product life cycle of ASUS product is in line with global environmental regulations. In addition, ASUS disclose the relevant information based on regulation requirements.

Please refer to <http://csr.asus.com/english/Compliance.htm> for information disclosure based on regulation requirements ASUS is complied with:

Japan JIS-C-0950 Material Declarations

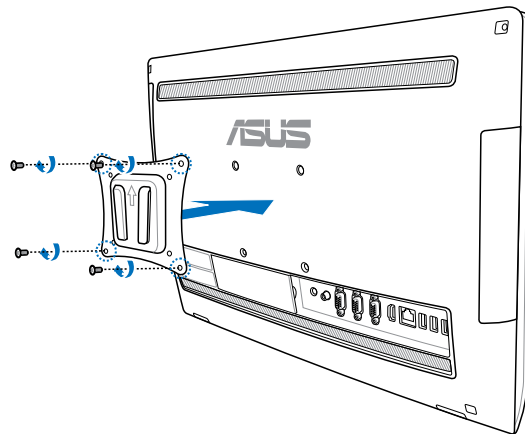
EU REACH SVHC

Korea RoHS

Swiss Energy Laws

UL Safety Precaution

To meet safety requirements, the All-in-One PC must be mounted to a bracket which guarantees the necessary stability considering the weight of the All-in-One PC. The All-in-One PC shall only be mounted and used with UL listed mounting adapters and brackets (e.g. VESA).



ENERGY STAR complied product



ENERGY STAR is a joint program of the U.S. Environmental Protection Agency and the U.S. Department of Energy helping us all save money and protect the environment through energy efficient products and practices.

All ASUS products with the ENERGY STAR logo comply with the ENERGY STAR standard, and the power management feature is enabled by default. The monitor and computer are automatically set to sleep after 15 and 30 minutes of user inactivity. To wake your computer, click the mouse or press any key on the keyboard.

Please visit <http://www.energy.gov/powermanagement> for detail information on power management and its benefits to the environment. In addition, please visit <http://www.energystar.gov> for detail information on the ENERGY STAR joint program.

NOTE: ENERGY STAR is NOT supported on Freedos and Linux-based products.

Manufacturer	ASUSTeK Computer Inc.	
	Tel:	+886-2-2894-3447
	Address:	4F, No. 150, LI-TE RD., PEITOU, TAIPEI 112, TAIWAN
Authorised representative in Europe	ASUSTeK Computer GmbH	
	Address:	HARKORT STR. 21-23, 40880 RATINGEN, GERMANY