

*Optional Custom Blower  
trim available on Request.  
at additional cost*

THE  
**Di | 5 a**  
USER MANUAL

**TANNOY®**

# Contents

- 3 INTRODUCTION**
- 3 SAFETY INSTRUCTIONS**
- 4 PRODUCT IDENTIFICATION**
- 5 STANDARD AND OPTIONAL ACCESSORIES**
- 6-7 INSTALLATION GUIDELINES**
  - 6 Installation using supplied yoke bracket
  - 7 Installation using supplied yoke bracket with optional pole-mount adaptor
- 8 PRODUCT DIMENSIONS**
- 8 HARDWARE DIMENSIONS**
- 9 TECHNICAL SPECIFICATIONS**
- 10 WARRANTY STATEMENT**
- 11 DECLARATION OF CONFORMITY**

# Introduction

Designed for a wide variety of sound reinforcement applications the Tannoy Di5a is an ultra compact active loudspeaker system capable of delivering high sound pressure levels with extremely low distortion, resulting in outstanding clarity, definition and detail. A truly universal solution, the Di5a offers outstanding durability and resistance to scuffs and knocks. Available in black or white the Di5a will effectively blend into most backgrounds. Utilisation of the point source loudspeaker allows the Di5a to be mounted on a wall or ceiling in either horizontal or vertical orientations without affecting its performance. A range of hardware options ensures simple and effective installation.

For applications requiring extended low frequency enhancement, a range of Tannoy sub-bass systems are available and can be used in conjunction with the Di5a.

# Safety Instructions

1. Read these instructions.
2. Keep these instructions.
3. Heed all warnings.
4. Follow all instructions.
5. The user is responsible for fixing the hardware to the surface to ensure safe operation. The fixings must support the weight of the product – please consult the manual's specification page for the appropriate weights. Please consult the relevant construction codes in your region for further information on suitable hardware fixing methods.
6. Some regional construction codes require the use of a secondary method of securing loudspeakers to surfaces to provide security of a back-up support. A secondary support line should be attached from the safety loop on the rear of the product to a source point on the wall. Please consult the relevant construction codes in your region.
7. Tannoy will not be held accountable for any damage caused by incorrect installation.
8. Clean only with dry cloth.
9. Do not block any ventilation openings. Install in accordance with instructions.
10. Do not install near any heat sources such as radiators, heat registers, stoves, or other apparatus (including amplifiers) that produce heat.
11. Only use attachments/accessories specified by the manufacturer.
12. Protect the power cord from being walked on or pinched particularly at plugs, convenience receptacles, and the point where they exit from the apparatus.
13. Only use attachments/accessories specified by the manufacturer.
14. Refer all servicing to qualified service personnel. Servicing is required when the apparatus has been damaged in any way, such as power-supply cord or plug is damaged, liquid has been spilled or objects have fallen into the apparatus, the apparatus has been exposed to rain or moisture, does not operate normally, or has been dropped.
15. Unplug this apparatus during lightning storms or when unused for long periods of time.
16. Refer all servicing to qualified service personnel. Servicing is required when the apparatus has been damaged in any way, such as power-supply cord or plug is damaged, liquid has been spilled or objects have fallen into the apparatus, the apparatus has been exposed to rain or moisture, does not operate normally, or has been dropped.
17. Do not expose this apparatus to dripping or splashing and ensure that no objects filled with liquids, such as vases, are placed on the apparatus.
18. To completely disconnect this apparatus from the AC Mains, disconnect the power supply cord plug from the AC receptacle.
19. The mains plug of the power supply cord shall remain readily operable.
20. Do not expose batteries to excessive heat such as sunshine, fire or the like.
21. This apparatus is a Class 1 device construction and that is shall be connected to a mains socket outlet with a protective earthing connection.



The lightning flash with arrowhead symbol within an equilateral triangle, is intended to alert the user to the presence of uninsulated "dangerous voltage" within the product's enclosure that may be of sufficient magnitude to constitute a risk of electric shock to persons.

**WARNING:** Failure to follow these safety instructions could result in fire, electric shock, or other injury or damage.



The exclamation point within an equilateral triangle is intended to alert the user to the presence of important operating and maintenance (servicing) instructions in the literature accompanying the product.

**WARNING:** To reduce the risk of fire or electric shock, do not expose this apparatus to rain, liquids, moisture, excessive heat, or naked flame.

**WARNING:** To prevent injury, this apparatus must be securely attached to the floor / wall / pole in accordance with the installation instructions.

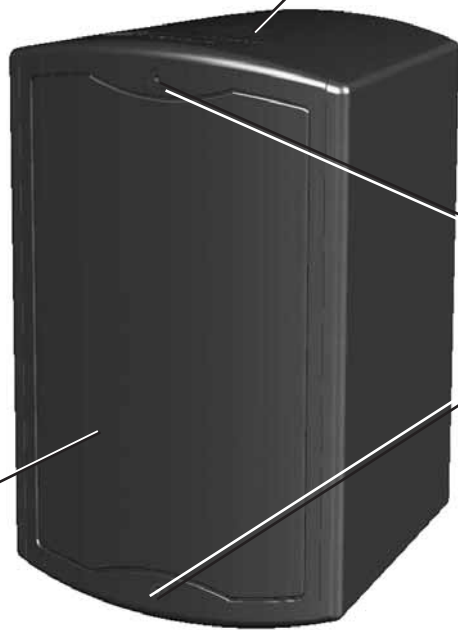
# Product Identification

**YOKE TRIM**

Remove the yoke trims on the top and bottom panels to access the yoke bracket fixing point

**GRILLE AND TRIM ASSEMBLY**

**GRILL TRIM SCREWS**



**POWER INPUT SOCKET (IEC TYPE)**

**POWER ON/ OFF SWITCH**

**LINE LEVEL AUDIO INPUT/ OUTPUT SOCKET (EURO TYPE)**

**LINE LEVEL AUDIO INPUT SOCKET (RCA TYPE)**



# Standard Accessories

**GRILLE AND TRIM ASSEMBLY**



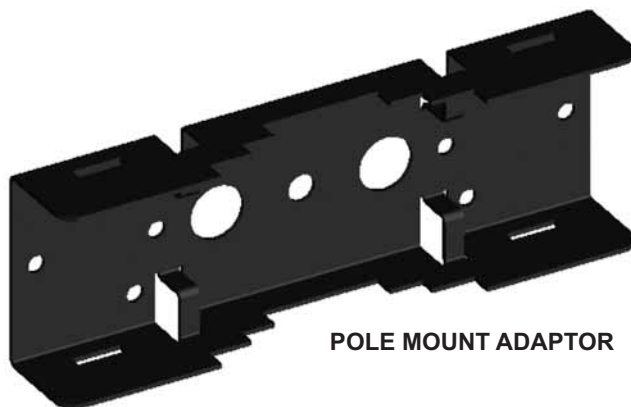
**POWER CORD**

**YOKE BRACKET**  
(SUPPLIED WITH FIXINGS)



**NOTE:** The Di5a is supplied with a mains cord appropriate to your country. For UK and European countries, please select the mains cord which suits your mains supply socket.

# Optional Accessories



**POLE MOUNT ADAPTOR**

# Installation Guidelines

## USING SUPPLIED YOKE BRACKET



1. Fix the yoke bracket to the surface using a suitable fixing method.



2. Remove the yoke trims from the product to access the bracket fixing points.



3. Connect the supplied IEC power cord to the Di5a. Note that the Di5a is supplied with a mains cord appropriate to your country. For UK and European countries, please select the mains cord which suits your mains supply socket.



4. Connect the loudspeaker appropriately using either the RCA or euro-type socket.



5. Adjust the level control.



6. Offer the speaker up to the bracket and attach it using a 5mm allen key and supplied fixings.

The buffers that fit between the speaker and bracket should be positioned as shown above. Use the longer hex-screws supplied when mounting the yoke bracket.

# Installation Guidelines

## USING POLE MOUNT ADAPTOR



1. Use the supplied fixings to fix the yoke bracket to the pole bracket adaptor.



2. Fix the pole mount bracket adaptor to the pole using the strapping provided. The bracket can be mounted in portrait or landscape orientations.



3. Remove the yoke trims from the product to access the bracket fixing points.



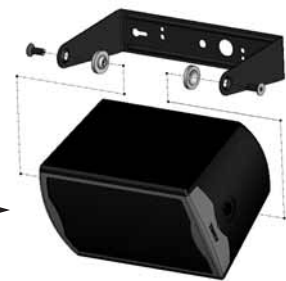
4. Connect the supplied IEC power cord to the Di5a. Note that the Di5a is supplied with a mains cord appropriate to your country. For UK and European countries, please select the mains cord which suits your mains supply socket.



5. Connect the loudspeaker appropriately using either the RCA or euro-type socket.

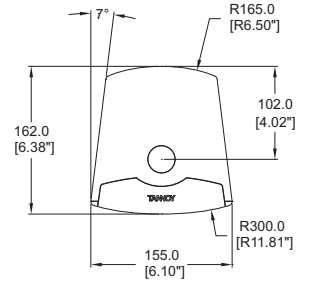
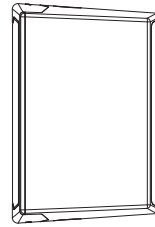
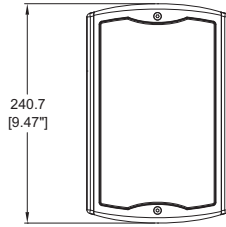
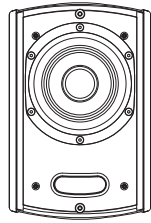
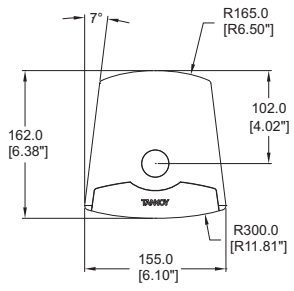


6. Adjust the level control.

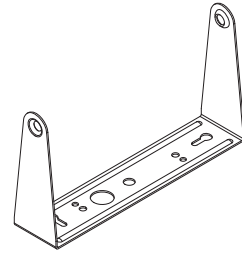
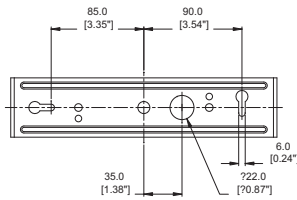
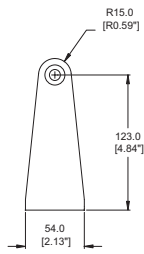
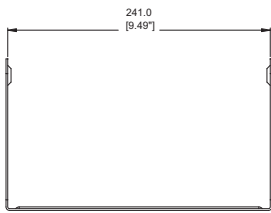


7. Offer the speaker up to the bracket and attach it using a 5mm allen key and supplied fixings. The buffers that fit between the speaker and bracket should be positioned as shown above. Use the longer hex-screws supplied when mounting the yoke bracket.

# Product Dimensions Di5a



# Hardware Dimensions 5" YOKE BRACKET





# Specifications.

		DI5a	
<b>SYSTEM</b>			
<b>Frequency Response (-3dB) <sup>(1)</sup></b>		100Hz – 25kHz	
<b>Frequency Range (-10dB) <sup>(1)</sup></b>		90Hz – 30kHz	
<b>Dispersion</b>		90	
Degrees conical -6dB			
<b>Low Frequency Driver</b>		1x 110mm (4.50")	
Mineral loaded polypropylene			
<b>High Frequency Driver</b>		25mm (0.98")	
ICT™			
<b>Crossover</b>		7kHz	
Inductively Coupled ICT™			
<b>Directivity Factor (Q)</b>	1kHz to 10kHz	5.3 averaged	
<b>Directivity Index (DI)</b>	1kHz to 10kHz	6.6 averaged	
<b>Rated Maximum SPL <sup>(2)</sup></b>	Average	103dB	
	Peak	109dB	
<b>Power Output</b>		30W RMS	
<b>Distortion 10% Full Power</b>		(4.25V) 2nd Harmonic	3rd Harmonic
	250Hz	1.33%	0.25%
	1kHz	0.62%	0.16%
	10kHz	1.43%	0.35%
<b>Distortion 1% Full Power</b>		(1.34V) 2nd Harmonic	3rd Harmonic
	250Hz	0.41%	0.10%
	1kHz	0.23%	0.07%
	10kHz	0.32%	0.18%
<b>Input Sensitivity</b> (for maximum input)		775mV (balanced)	
		500mV (unbalanced)	
<b>Input Impedance</b> (for maximum input)		11k Ohm (balanced)	
		7k Ohm (unbalanced)	
<b>Protection Circuitry</b>		Thermal	
		Soft Limiting	
<b>Supply</b>		100 - 240V AC, 50 – 60Hz	
		Fuse T1AL 250V	
<b>Power Consumption</b>		76VA maximum	
<b>CONSTRUCTION</b>			
<b>Enclosure</b>		High impact polystyrene (HIPS)	
<b>Grille</b>		Powder coated steel	
<b>Finish</b>		Textured black or white paint	
<b>Connectors</b>		6 way euro-type input / output connector	
		Unbalanced RCA (phono) input	
		Mains inlet IEC type C13	
<b>Dimensions</b> (H x W x D)		240.7 x 155.0 x 162.0mm	
		9.47 x 6.10 x 6.38"	
<b>Weight</b>		2.40kg (5.3lbs)	
<b>Net Weight</b>		7.00kg (15.43lbs)	

**Notes:**

(1) Average over stated bandwidth. Measured at 1 metre on axis in an anechoic chamber

(2) Unweighted pink noise input, measured at 1 metre in an anechoic chamber

A full range of measurements, performance data, and Ease™ Data can be downloaded from [www.tannoy.com](http://www.tannoy.com)

Tannoy operates a policy of continuous research and development. The introduction of new materials or manufacturing methods will always equal or exceed the published specifications, which Tannoy reserves the right to alter without prior notice.

**No maintenance of the Di loudspeaker is necessary.**

All of our products have been produced and tested with care and precision to give first-class service.

All passive components are guaranteed for a period of five years from the date of purchase from an authorised Tannoy dealer subject to the absence or evidence of misuse, overload, or accidental damage.

All active and electronic components are guaranteed for a period of one year from the date of purchase from an authorised Tannoy dealer subject to the absence of, or evidence of, misuse, overload or accidental damage.

If at any time during this warranty period the equipment proves to be defective for any reason other than accident, misuse, neglect, unauthorised modification or fair wear and tear, we will repair any such manufacturing defect or, at our option, replace it without charge for labour, parts or return carriage.

If you suspect a problem with a Tannoy product then, in the first instance, discuss it with your Tannoy dealer. If you require further assistance then we ask that you deal directly with your local Tannoy distributor. If you cannot locate your distributor please contact Customer Services, Tannoy Ltd at the address given below.

Customer Services, Tannoy Ltd., Rosehall Industrial Estate, Coatbridge, Strathclyde ML5 4TF, Scotland

Telephone: 01236 420199 (National)  
+44 1236 420199 (International)  
Fax: 01236 428230 (National)  
+44 1236 428230 (International)  
E-mail: [enquiries@tannoy.com](mailto:enquiries@tannoy.com)

**DO NOT SHIP ANY PRODUCT TO TANNOY WITHOUT PREVIOUS AUTHORISATION**

Our policy commits us to incorporating improvements to our products through continuous research and development. Please confirm current specifications for critical applications with your supplier.

# Declaration of Conformity

The following apparatus is manufactured in China for Tannoy Ltd of Rosehall Industrial Estate, Coatbridge, Scotland, ML5 4TF and conform(s) to the protection requirements of the European Electromagnetic Compatibility Standards and Directives relevant to Domestic Electrical Equipment. The apparatus is designed and constructed such that electromagnetic disturbances generated do not exceed levels allowing radio and telecommunications equipment and other apparatus to operate as intended, and, the apparatus has an adequate level of intrinsic immunity to electromagnetic disturbance to enable operation as specified and intended.

**Details of the Apparatus:** Tannoy Contractor Loudspeaker  
Model Number: Di  
**Associated Technical File:** EMCi6  
**Applicable Standards:** EN 50081-1 Emission  
EN 50082-1 Immunity



**Signed:**  
**Position:** Director of Engineering (Professional)  
**Date:** 9th May. 07

Optional Custom Coloured  
is available on Request.  
Additional Cost

Check Out

[www.di-range.com](http://www.di-range.com)

Tannoy (Direct UK)  
TCGI (ROW sales)  
TCGA (Americas sales)  
Tannoy Middle East

T: 00 44 (0) 1236 420199  
T: 00 45 8742 7000  
T: 00 1 (519) 745 1158  
T: 00 971 (04) 4401208

E: [enquiries@tannoy.com](mailto:enquiries@tannoy.com)  
E: [info@tcgroup-international.com](mailto:info@tcgroup-international.com)  
E: [info@tcgroup-americas.com](mailto:info@tcgroup-americas.com)  
E: [enquiries@tannoy.com](mailto:enquiries@tannoy.com)



Tannoy adopts a policy of continuous improvement and product specification is subject to change.

[tannoy.com](http://tannoy.com)