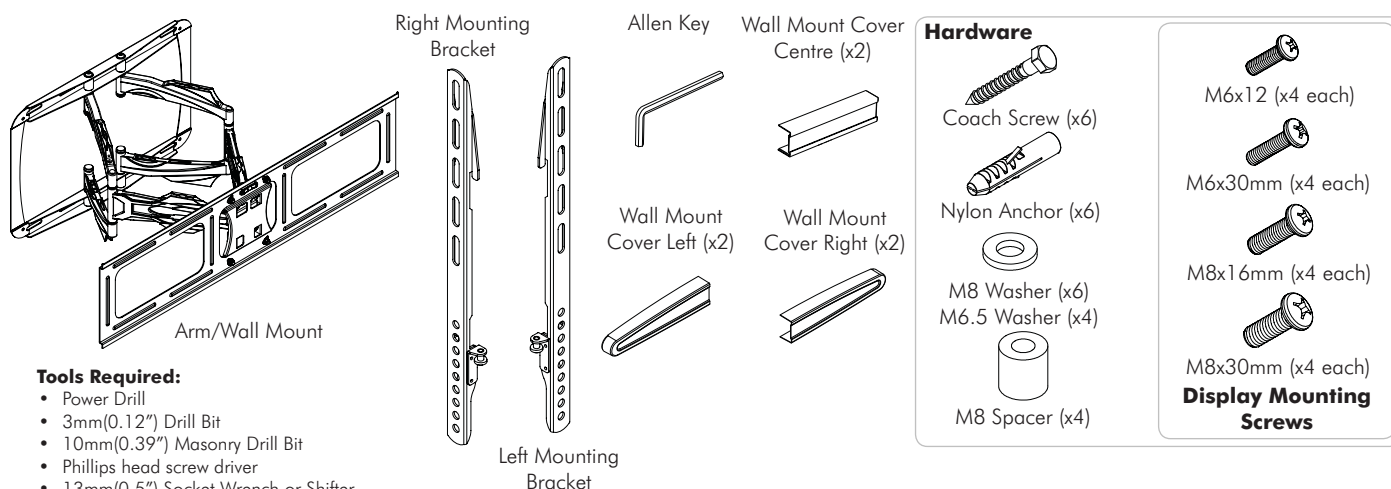


Installation Instructions

telehook

Large-Medium TV | Articulated Arm

Component Checklist



IMPORTANT INFORMATION:

! IMPORTANT - Install Telehook 3070 Large-Medium TV Articulated Arm Mount as per installation instruction.

! This product supports a maximum load of 60kg (132lbs.).

! This product has a universal mounting hole pattern that suits a broad range of TV's:
From 200-800mm in width and 200-400mm in height.

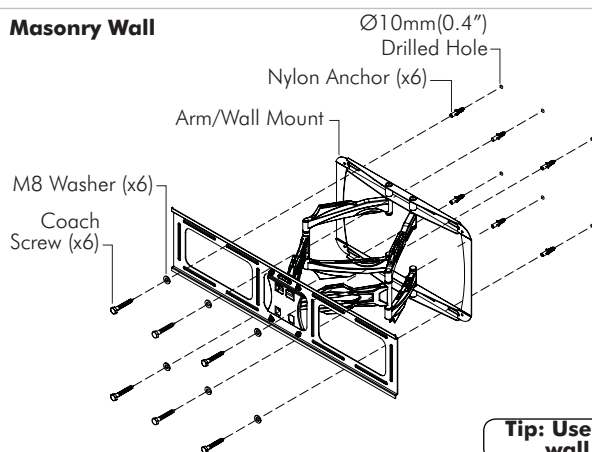
! The manufacturer accepts no responsibility for incorrect installation.

Step 1. Check Components

Check you have received against the component checklist and hardware above.

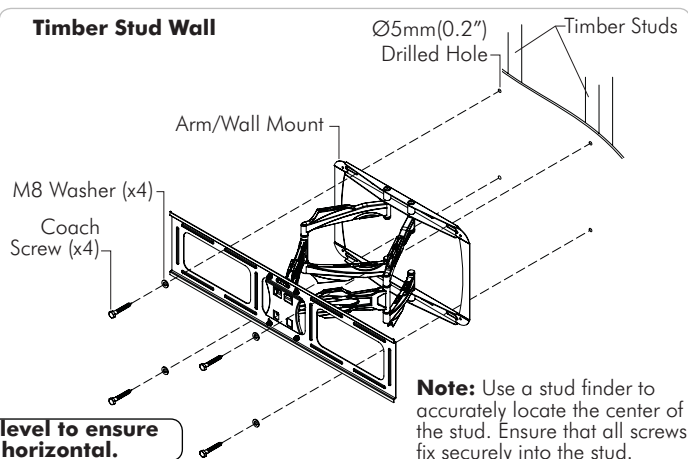
Step 2. Install Arm/Wall Mount to the Wall

Masonry Wall

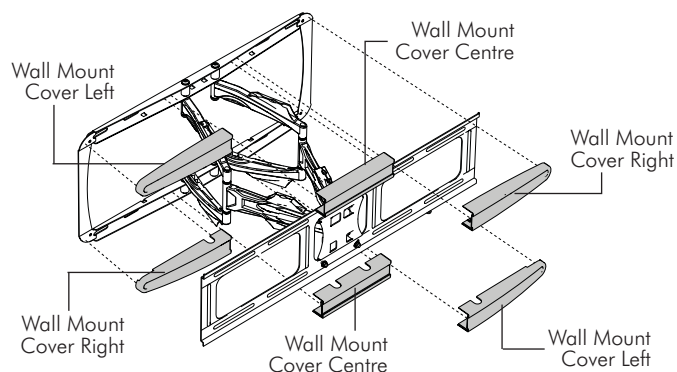


Tip: Use a spirit level to ensure wall plate is horizontal.

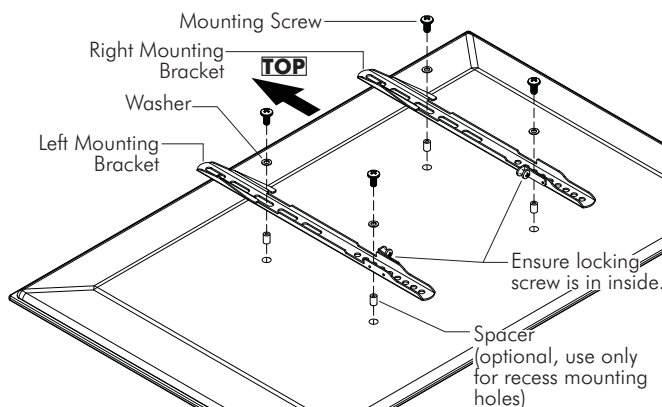
Timber Stud Wall



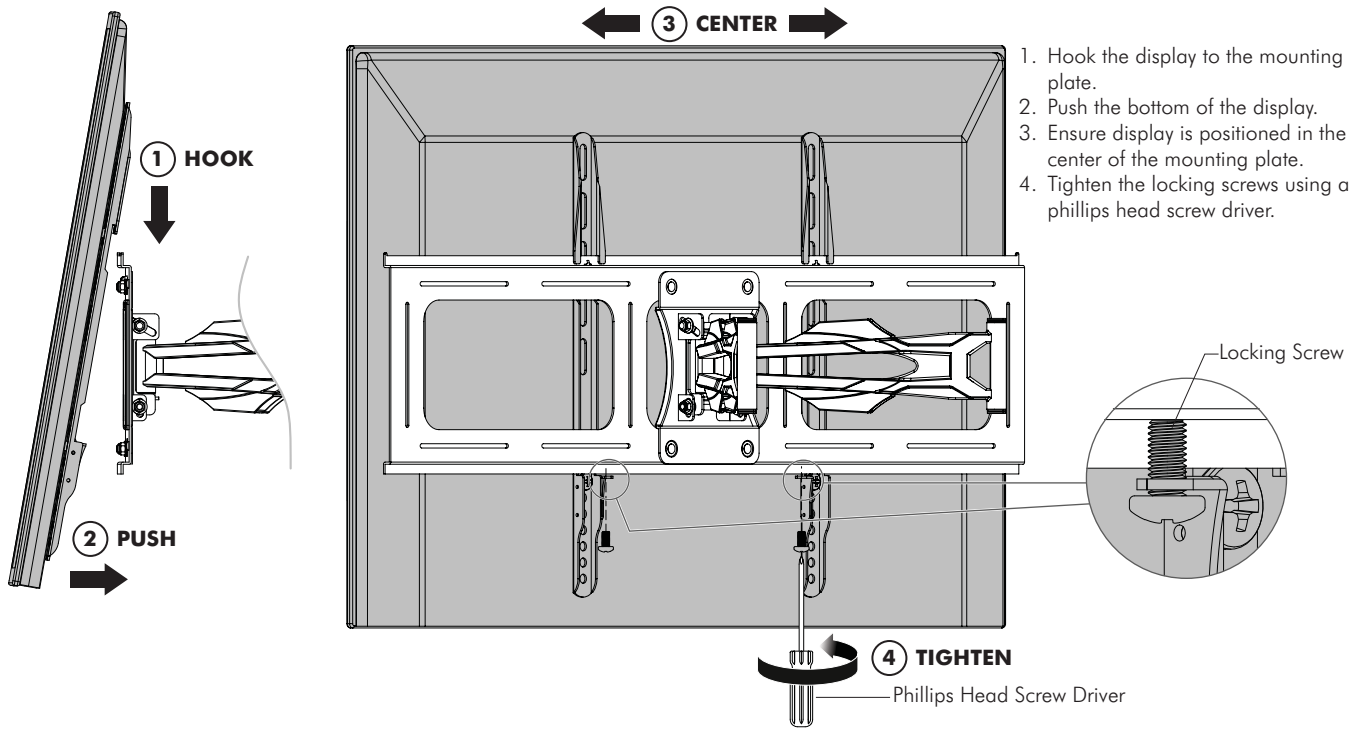
Step 3. Attach Wall Mount Covers



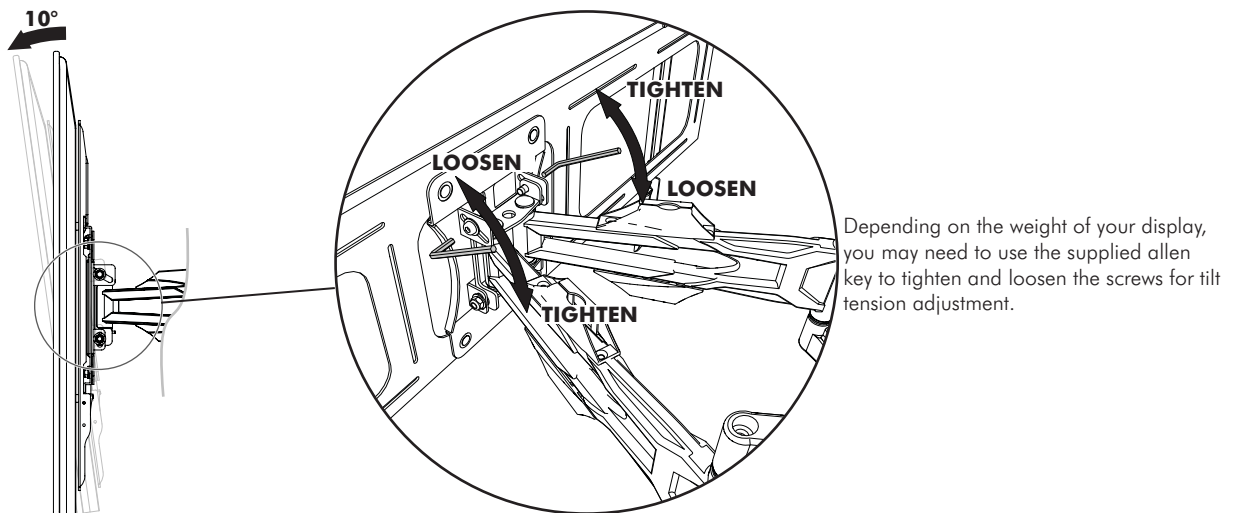
Step 4. Attach Mounting Brackets to Display



Step 5. Attach Display to the Arm/Wall Mount

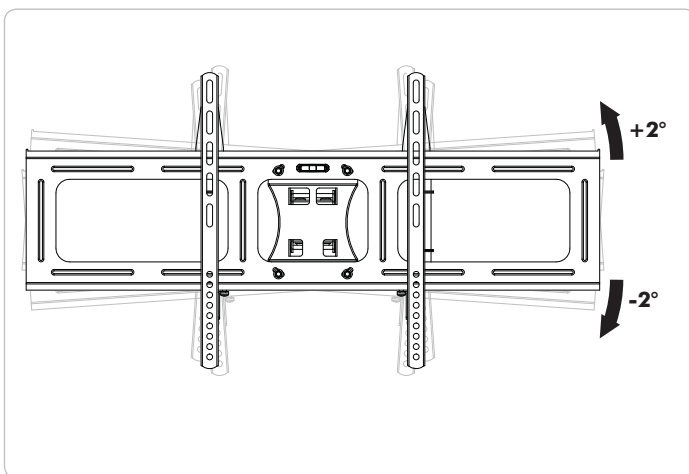


Step 6. Tilt Adjustment

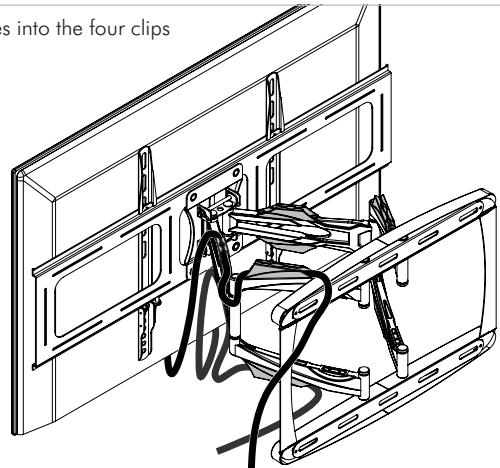


Step 7. Horizontal Adjustment

Step 8. Cable Management



Insert cables into the four clips provided.



Installation Complete



No portion of this document or any artwork contained herein should be reproduced in any way without the express written consent of Atdec Pty Ltd. Due to continuing product development, the manufacturer reserves the right to alter specifications without notice. Published 02.11.12 ©