

Dell Vostro 3360 Owner's Manual

Regulatory Model: P32G
Regulatory Type: P32G001



Notes, Cautions, and Warnings



NOTE: A NOTE indicates important information that helps you make better use of your computer.



CAUTION: A CAUTION indicates either potential damage to hardware or loss of data and tells you how to avoid the problem.



WARNING: A WARNING indicates a potential for property damage, personal injury, or death.

© 2012 Dell Inc.

Trademarks used in this text: Dell™, the Dell logo, Dell Precision™, OptiPlex™, Latitude™, PowerEdge™, PowerVault™, PowerConnect™, OpenManage™, EqualLogic™, Compellent™, KACE™, FlexAddress™, Force10™ and Vostro™ are trademarks of Dell Inc. Intel®, Pentium®, Xeon®, Core® and Celeron® are registered trademarks of Intel Corporation in the U.S. and other countries. AMD® is a registered trademark and AMD Opteron™, AMD Phenom™ and AMD Sempron™ are trademarks of Advanced Micro Devices, Inc. Microsoft®, Windows®, Windows Server®, Internet Explorer®, MS-DOS®, Windows Vista® and Active Directory® are either trademarks or registered trademarks of Microsoft Corporation in the United States and/or other countries. Red Hat® and Red Hat® Enterprise Linux® are registered trademarks of Red Hat, Inc. in the United States and/or other countries. Novell® and SUSE® are registered trademarks of Novell Inc. in the United States and other countries. Oracle® is a registered trademark of Oracle Corporation and/or its affiliates. Citrix®, Xen®, XenServer® and XenMotion® are either registered trademarks or trademarks of Citrix Systems, Inc. in the United States and/or other countries. VMware®, Virtual SMP®, vMotion®, vCenter® and vSphere® are registered trademarks or trademarks of VMware, Inc. in the United States or other countries. IBM® is a registered trademark of International Business Machines Corporation.

2012 - 06

Rev. A00

Contents

Notes, Cautions, and Warnings.....	2
1 Working on Your Computer.....	5
Before Working Inside Your Computer.....	5
Turning Off Your Computer.....	6
After Working Inside Your Computer.....	6
2 Removing and Installing Components.....	9
Recommended Tools.....	9
Removing the Subscriber Identity Module (SIM) Card.....	9
Installing the SIM Card.....	10
Removing the Security Digital (SD) Card.....	10
Installing the Secure Digital Card.....	10
Removing the Access Panel.....	10
Installing the Access Panel.....	11
Removing the Wireless Local Area Network (WLAN) Card.....	11
Installing the WLAN Card.....	11
Removing the Coin-Cell Battery.....	11
Installing the Coin-Cell Battery.....	12
Removing the Memory.....	12
Installing the Memory.....	12
Removing the Keyboard.....	12
Installing the Keyboard.....	14
Removing the Palmrest.....	14
Installing the Palmrest.....	17
Removing the Battery.....	18
Installing the Battery.....	19
Removing the Hard Drive.....	19
Installing the Hard Drive.....	20
Removing the Display-Hinge Cover.....	21
Installing the Display Hinge Cover.....	21
Removing the Display Assembly.....	22
Installing the Display Assembly.....	22
Removing the Display Bezel.....	23
Installing the Display Bezel.....	24
Removing the Display Panel.....	24
Installing the Display Panel.....	27


Removing the Camera Module.....	27
Installing the Camera Module.....	28
Removing the Fan.....	28
Installing the Fan.....	29
Removing the System Board.....	29
Installing the System Board.....	31
Removing the Heat Sink.....	31
Installing the Heat Sink.....	32
Removing the Speakers.....	32
Installing the Speakers.....	33
Removing the Power Connector.....	34
Installing the Power Connector.....	34
Removing the Input/Output (I/O) board.....	34
Installing the I/O Board.....	35
3 System Setup.....	37
Boot Sequence.....	37
Navigation Keys.....	37
System Setup Options.....	38
Updating the BIOS	42
System and Setup Password.....	42
Assigning a System Password and Setup Password.....	42
Deleting or Changing an Existing System and/or Setup Password.....	43
4 Diagnostics.....	45
Enhanced Pre-Boot System Assessment (ePSA) Diagnostics.....	45
Device Status Lights.....	45
Battery Status Lights.....	46
Diagnostic Beep Codes.....	46
5 Specifications.....	49
6 Contacting Dell.....	55


Working on Your Computer

Before Working Inside Your Computer


Use the following safety guidelines to help protect your computer from potential damage and to help to ensure your personal safety. Unless otherwise noted, each procedure included in this document assumes that the following conditions exist:


- You have performed the steps in Working on Your Computer.
- You have read the safety information that shipped with your computer.
- A component can be replaced or--if purchased separately--installed by performing the removal procedure in reverse order.

 **WARNING:** Before working inside your computer, read the safety information that shipped with your computer. For additional safety best practices information, see the Regulatory Compliance Homepage at www.dell.com/regulatory_compliance

 **CAUTION:** Many repairs may only be done by a certified service technician. You should only perform troubleshooting and simple repairs as authorized in your product documentation, or as directed by the online or telephone service and support team. Damage due to servicing that is not authorized by Dell is not covered by your warranty. Read and follow the safety instructions that came with the product.

 **CAUTION:** To avoid electrostatic discharge, ground yourself by using a wrist grounding strap or by periodically touching an unpainted metal surface, such as a connector on the back of the computer.

 **CAUTION:** Handle components and cards with care. Do not touch the components or contacts on a card. Hold a card by its edges or by its metal mounting bracket. Hold a component such as a processor by its edges, not by its pins.

 **CAUTION:** When you disconnect a cable, pull on its connector or on its pull-tab, not on the cable itself. Some cables have connectors with locking tabs; if you are disconnecting this type of cable, press in on the locking tabs before you disconnect the cable. As you pull connectors apart, keep them evenly aligned to avoid bending any connector pins. Also, before you connect a cable, ensure that both connectors are correctly oriented and aligned.

 **NOTE:** The color of your computer and certain components may appear differently than shown in this document.


To avoid damaging your computer, perform the following steps before you begin working inside the computer.

1. Ensure that your work surface is flat and clean to prevent the computer cover from being scratched.
2. Turn off your computer (see [Turning Off Your Computer](#)).
3. If the computer is connected to a docking device (docked) such as the optional Media Base or Battery Slice, undock it.

 **CAUTION:** To disconnect a network cable, first unplug the cable from your computer and then unplug the cable from the network device.


4. Disconnect all network cables from the computer.
5. Disconnect your computer and all attached devices from their electrical outlets.

6. Close the display and turn the computer upside-down on a flat work surface.

 **NOTE:** To avoid damaging the system board, you must remove the main battery before you service the computer.

7. Remove the main battery.
8. Turn the computer top-side up.
9. Open the display.
10. Press the power button to ground the system board.

 **CAUTION:** To guard against electrical shock, always unplug your computer from the electrical outlet before opening the display.

 **CAUTION:** Before touching anything inside your computer, ground yourself by touching an unpainted metal surface, such as the metal at the back of the computer. While you work, periodically touch an unpainted metal surface to dissipate static electricity, which could harm internal components.


11. Remove any installed ExpressCards or Smart Cards from the appropriate slots.

Turning Off Your Computer


 **CAUTION:** To avoid losing data, save and close all open files and exit all open programs before you turn off your computer.

1. Shut down the operating system:

- In Windows 7:

Click **Start** , then click **Shut Down**.

- In Windows Vista :

Click **Start** , then click the arrow in the lower-right corner of the **Start** menu as shown below, and then click **Shut Down**.




- In Windows XP:

Click **Start** → **Turn Off Computer** → **Turn Off** . The computer turns off after the operating system shutdown process is complete.


2. Ensure that the computer and all attached devices are turned off. If your computer and attached devices did not automatically turn off when you shut down your operating system, press and hold the power button for about 4 seconds to turn them off.

After Working Inside Your Computer

After you complete any replacement procedure, ensure you connect any external devices, cards, and cables before turning on your computer.

 **CAUTION:** To avoid damage to the computer, use only the battery designed for this particular Dell computer. Do not use batteries designed for other Dell computers.

1. Connect any external devices, such as a port replicator, battery slice, or media base, and replace any cards, such as an ExpressCard.
2. Connect any telephone or network cables to your computer.

 **CAUTION: To connect a network cable, first plug the cable into the network device and then plug it into the computer.**

3. Replace the battery.
4. Connect your computer and all attached devices to their electrical outlets.
5. Turn on your computer.

Removing and Installing Components

This section provides detailed information on how to remove or install the components from your computer.

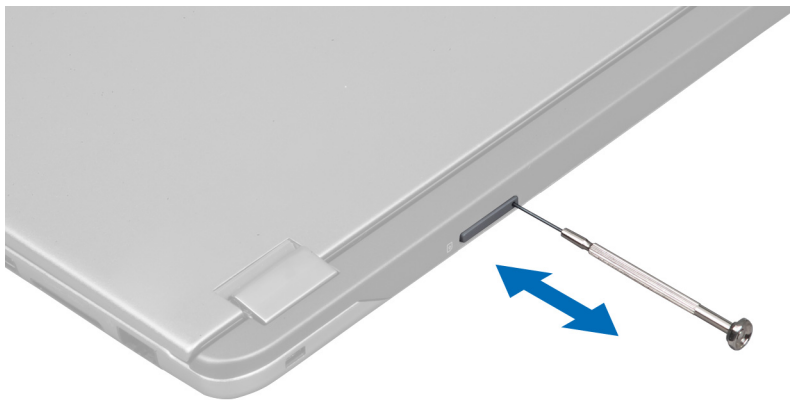
Recommended Tools

The procedures in this document may require the following tools:

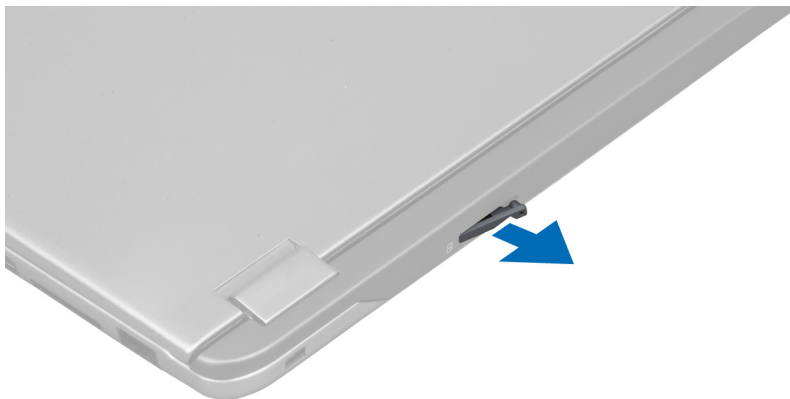
- Small flat-blade screwdriver
- Phillips screwdriver
- Small plastic scribe

Removing the Subscriber Identity Module (SIM) Card

1. Follow the procedures in *Before Working Inside Your Computer*.
2. Insert a paper clip into the small hole on the SIM-card holder to release it from the computer.



3. Remove the SIM-card holder from the computer.



4. Remove the SIM card from the SIM-card holder.

Installing the SIM Card

1. Place the SIM card into the SIM-card holder.
2. Slide the SIM card holder together with the SIM card into its slot.
3. Follow the procedures in *After Working Inside Your Computer*.

Removing the Security Digital (SD) Card

1. Follow the procedures in *Before Working Inside Your Computer*.
2. Press in on the SD card to release it from the computer. Slide the SD card out of the computer.



Installing the Secure Digital Card

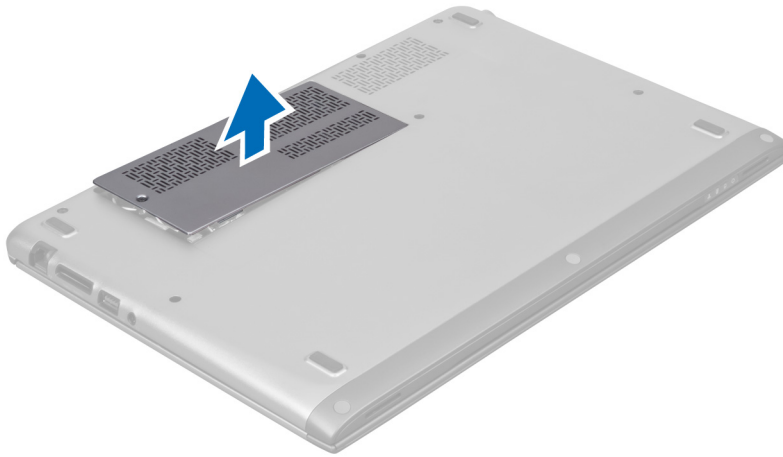
1. Push the SD card into the slot until it clicks into place.
2. Follow the procedures in *After Working Inside Your Computer*.

Removing the Access Panel

1. Follow the procedures in *Before Working Inside Your Computer*.
2. Remove the screw that secures the access panel to the computer.



3. Remove the access panel from the computer.

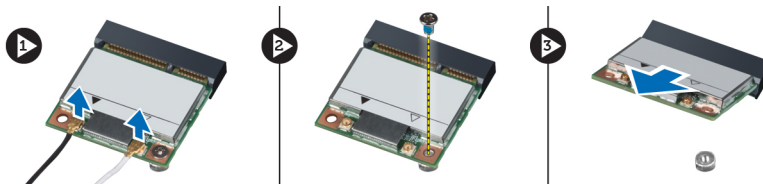


Installing the Access Panel

1. Place the access panel to its original position on the computer.
2. Tighten the screw to secure the access panel to the computer.
3. Follow the procedures in *After Working Inside Your Computer*.

Removing the Wireless Local Area Network (WLAN) Card

1. Follow the procedures in *Before Working Inside Your Computer*.
2. Remove the access panel.
3. Disconnect the antenna cables from the WLAN card and remove the screw that secures the WLAN card to the computer. Remove the WLAN card from the computer.



Installing the WLAN Card

1. Slide the WLAN card into its slot.
2. Connect the antenna cables according to the color code on the WLAN card.
3. Install the access panel.
4. Follow the procedures in *After Working Inside Your Computer*.

Removing the Coin-Cell Battery

1. Follow the procedures in *Before Working Inside Your Computer*.
2. Remove the access panel.
3. Use a plastic scribe to pry the battery from the socket and lift the coin-cell battery out of the computer.

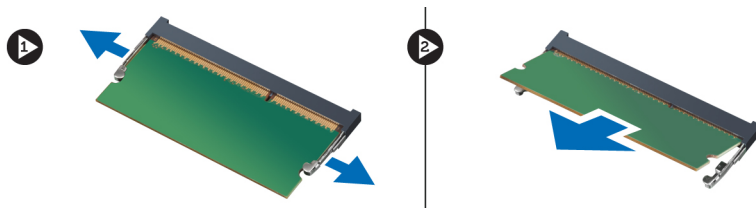


Installing the Coin-Cell Battery

1. Push the coin-cell battery into its slot on the system board.
2. Install the access panel.
3. Follow the procedures in *After Working Inside Your Computer*.

Removing the Memory

1. Follow the procedures in *Before Working Inside Your Computer*.
2. Remove the access panel.
3. Use your fingertips to spread apart the securing clips on each end of the memory module connector until the memory module pops up and remove the memory module from its connector on the system board by drawing the module from the system board at 45-degree angle.



Installing the Memory

1. Insert and secure the memory module to the system board.
2. Install the access panel.
3. Follow the procedures in *After Working Inside Your Computer*.

Removing the Keyboard

1. Follow the procedures in *Before Working Inside Your Computer*.
2. Remove the screw that secures the keyboard to the chassis.



3. Starting on the right side of the system, use a plastic scribe to pry up the keyboard from the computer.



4. Flip the keyboard over and lay it on the palmrest.



5. Lift the clip to release the keyboard cable and disconnect it from the computer.



Installing the Keyboard

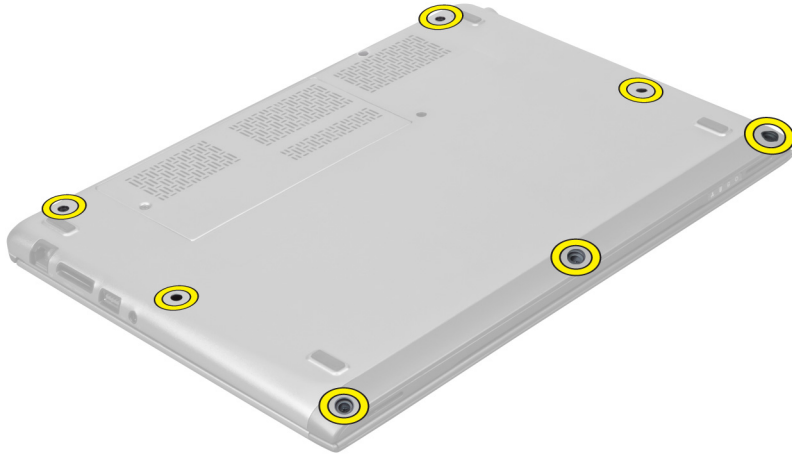
1. Connect the keyboard cable to the system board.
2. Place the keyboard back to its original position.
3. Tighten the screw to secure the keyboard to the computer.
4. Follow the procedures in *After Working Inside Your Computer*.

Removing the Palmrest

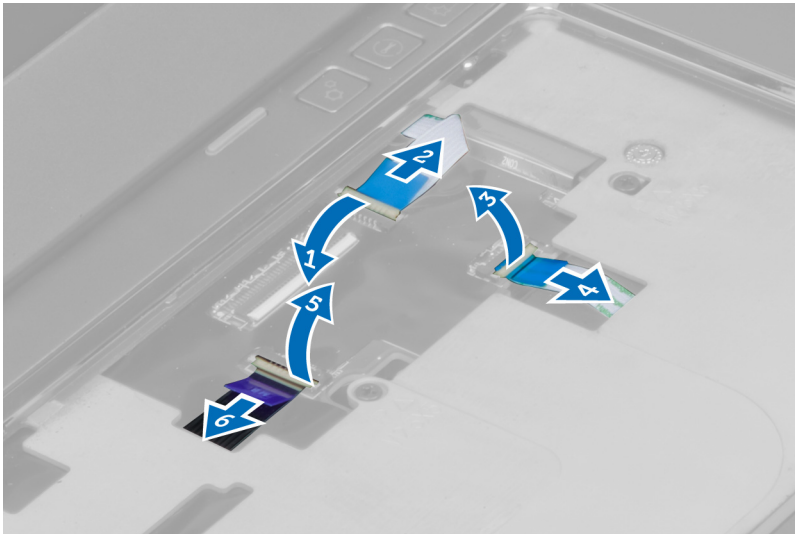
1. Follow the procedures in *Before Working Inside Your Computer*.
2. Remove:
 - a) access panel
 - b) keyboard
 - c) display hinge cover
3. Using a plastic scribe pry out the rubber pads that cover the front screws on the base cover.



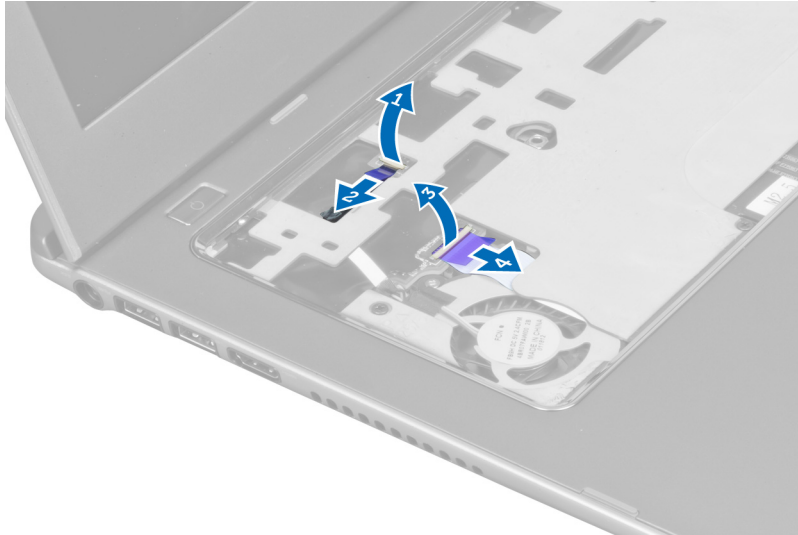
4. Remove the screws that secure the palmrest to the computer.



5. Disconnect the quick launch board cable, the finger print reader cable, and the palmrest cable from the system board.



6. Disconnect the power LED cable and the LED board cable from the system board.



7. Remove the screws that secure the palmrest to the front of the computer.



8. Pry along the edges of the palmrest to release the palmrest.



9. Lift the palmrest up and away from the computer.

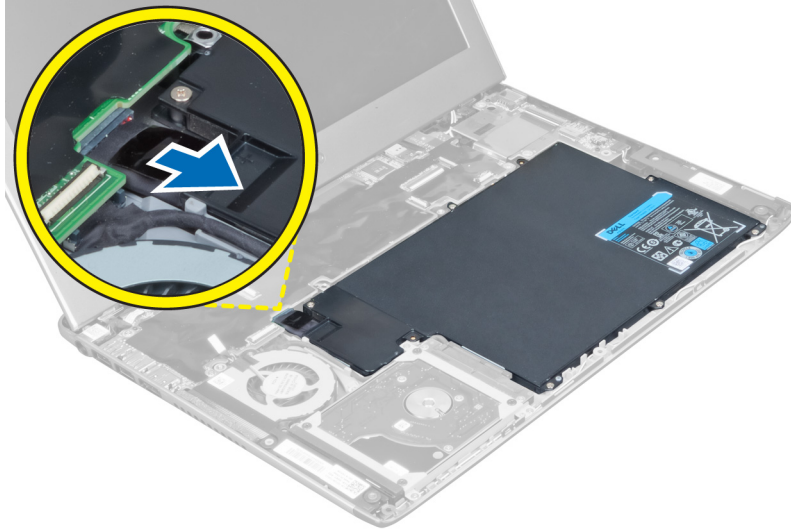


Installing the Palmrest

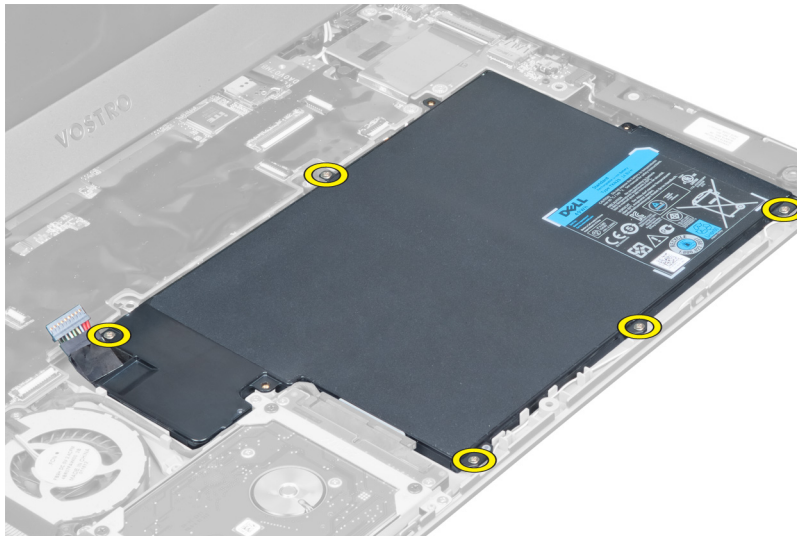
1. Starting from the edges of the palmrest, press downwards on the palmrest to engage the tabs on the computer.
2. Tighten the screws to secure the palmrest to the front of the computer.
3. Connect the power LED cable and the LED board cable to the system board.
4. Connect the quick launch board cable, the finger print reader cable, and the palmrest cable to the system board.
5. Tighten the screws to secure the palmrest to the back of the computer.
6. Push the rubber pads to cover the screws on the computer.
7. Install the keyboard.
8. Install the access panel.
9. Follow the procedures in *After Working Inside Your Computer*.

Removing the Battery

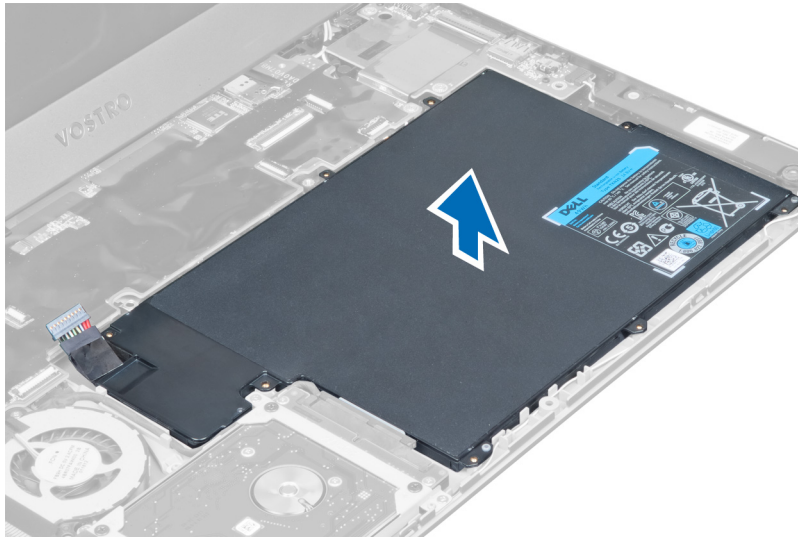
1. Follow the procedures in *Before Working Inside Your Computer*.
2. Remove the:
 - a) access panel
 - b) keyboard
 - c) palmrest
3. Disconnect the battery cable from the system board.



4. Remove the screws that secure the battery to the system board.



5. Remove the battery from the computer.

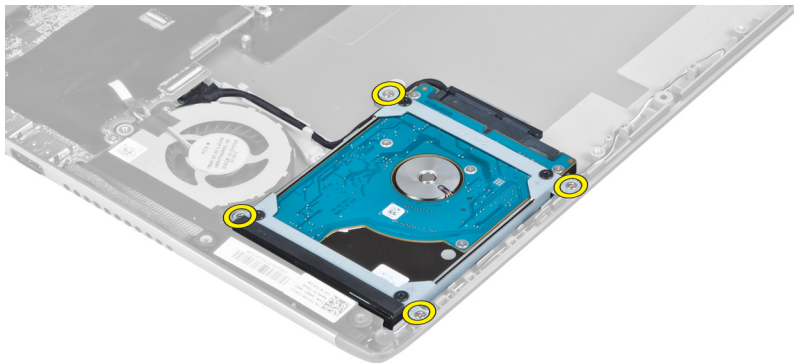


Installing the Battery

1. Place the battery into the battery bay.
2. Replace and tighten the screws that secure the battery to the computer.
3. Connect the battery cable to the system board.
4. Install:
 - a) palmrest
 - b) keyboard
 - c) access panel
5. Follow the procedures in *After Working Inside Your Computer*.

Removing the Hard Drive

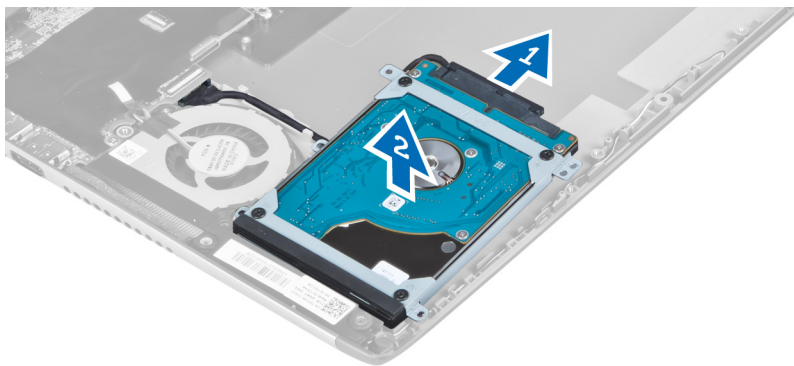
1. Follow the procedures in *Before Working Inside Your Computer*.
2. Remove the:
 - a) access panel
 - b) keyboard
 - c) palmrest
 - d) battery
3. Remove the screws that secure the hard drive to the computer.



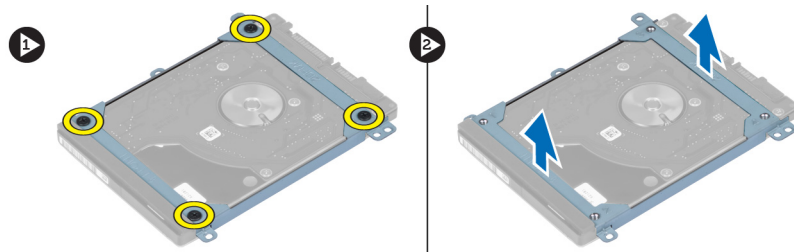
4. Lift the hard drive to disconnect the hard-drive cable.



5. Disconnect the hard-drive cable from the hard drive and remove the hard drive from the computer.



6. Remove the screws that secure the hard-drive bracket to the hard drive and remove the hard drive bracket from it.



Installing the Hard Drive

1. Tighten the screws to secure the hard drive bracket to the hard drive.
2. Connect the hard drive cable to the hard drive and place the hard drive back to its original position on the computer.
3. Tighten the screws to secure the hard drive to the computer.
4. Install:
 - a) battery
 - b) palmrest
 - c) keyboard
 - d) access panel
5. Follow the procedures in *After Working Inside Your Computer*.

Removing the Display-Hinge Cover

1. Follow the procedures in *Before Working Inside Your Computer*.
2. Remove the access panel.
3. Remove the screws that secure the display-hinge cover to the computer.



4. Remove the display-hinge cover from the computer.



Installing the Display Hinge Cover

1. Align the display hinge cover to its original position on the computer.
2. Tighten the screws to secure the display hinge cover to the computer.
3. Install the access panel.
4. Follow the procedures in *After Working Inside Your Computer*.

Removing the Display Assembly

1. Follow the procedures in *Before Working Inside Your Computer*.
2. Remove the:
 - a) access panel
 - b) keyboard
 - c) palmrest
 - d) battery
 - e) display hinge cover
3. Release the antenna cables from their routing.



4. Disconnect the display cable from the system board and remove the screws that secure the display assembly to the computer.



Installing the Display Assembly

1. Connect the display cable to the system board and tighten the screws to secure the display assembly to the computer.
2. Thread the hard drive cable through its routing tabs.
3. Thread the antenna cables through their routing tabs.
4. Install :
 - a) display hinge cover
 - b) battery
 - c) palmrest
 - d) keyboard

e) access panel

5. Follow the procedures in *After Working Inside Your Computer*.

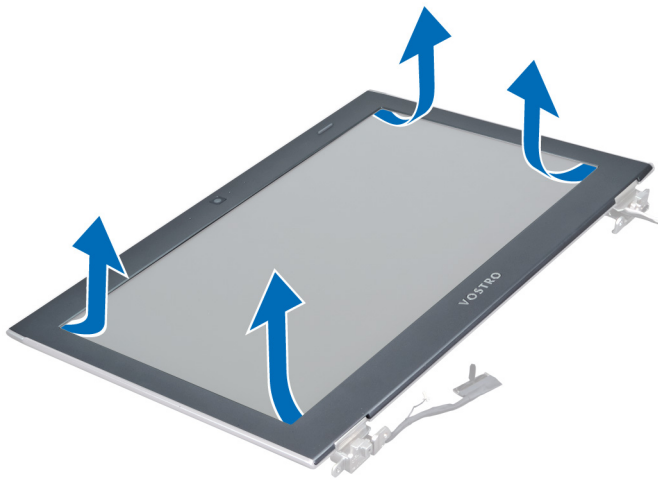
Removing the Display Bezel

1. Follow the procedures in *Before Working Inside Your Computer*.

2. Remove:

- a) access panel
- b) keyboard
- c) palmrest
- d) battery
- e) display assembly

3. Using a plastic scribe, pry under the display bezel to release it from the display assembly.



4. Lift the display bezel and remove it from the display assembly.



Installing the Display Bezel

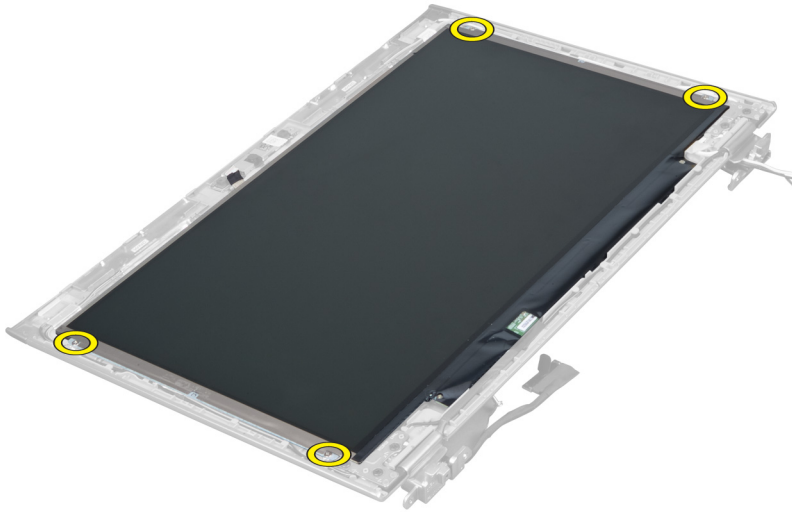
1. Align the display bezel with the display assembly and gently snap it into place.
2. Install :
 - a) display hinge cover
 - b) battery
 - c) palmrest
 - d) keyboard
 - e) access panel
3. Follow the procedures in *After Working Inside Your Computer*.

Removing the Display Panel

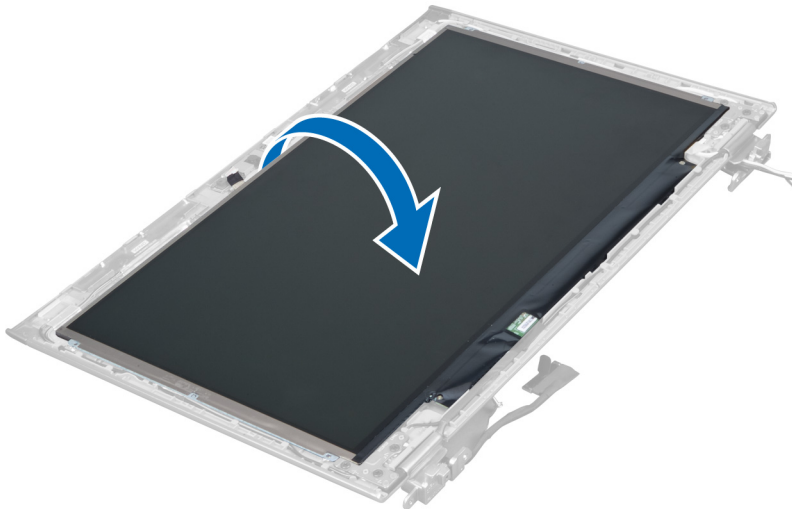
1. Follow the procedures in *Before Working Inside Your Computer*.
2. Remove:
 - a) access panel
 - b) keyboard
 - c) palmrest
 - d) battery
 - e) display hinge cover
 - f) display assembly
 - g) display bezel
3. Disconnect the camera cable from its connector on the camera module.



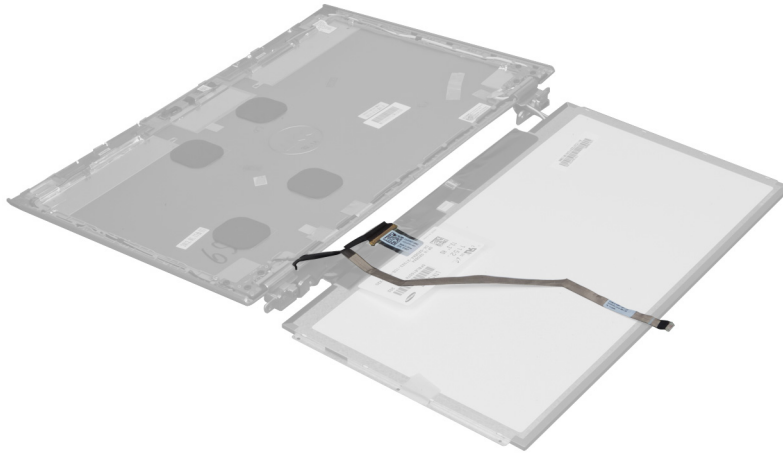
4. Remove the screws that secure the display panel to the display back cover.



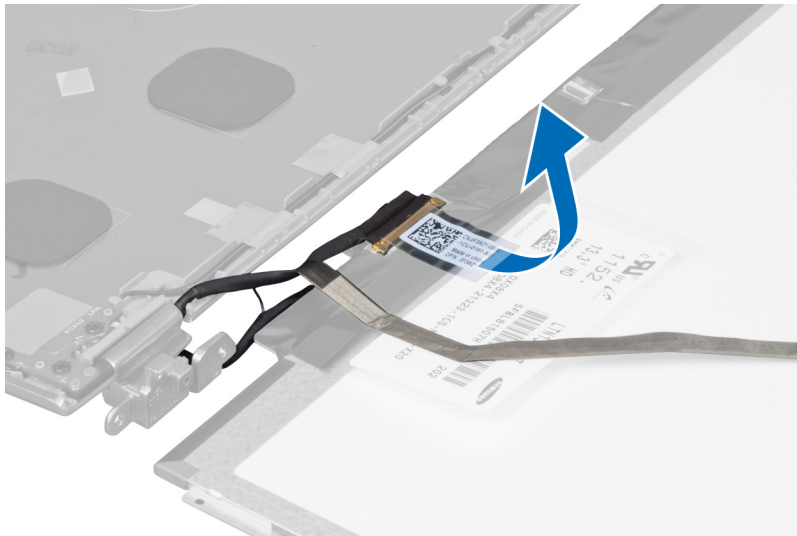
5. Flip the display panel from the display assembly.



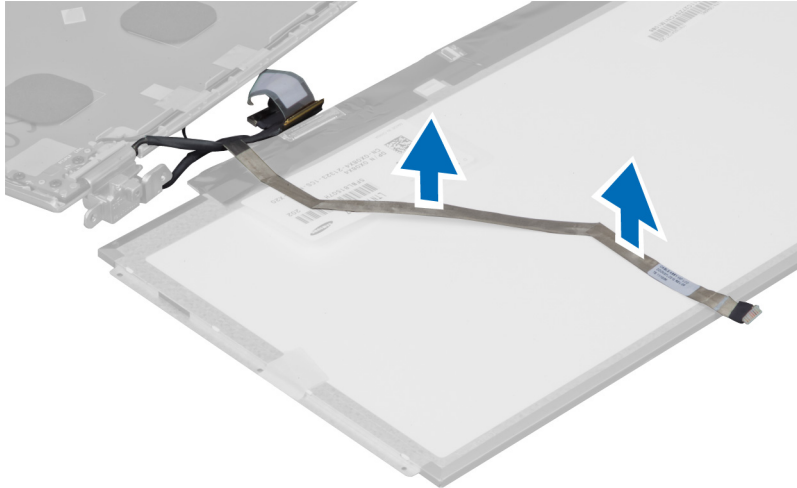
6. Place the display panel with its front facing down to access the display and camera cables attached to it.



7. Pull out the plastic tab to disconnect the display cable from the display panel.



8. Remove the camera cable from the display panel.

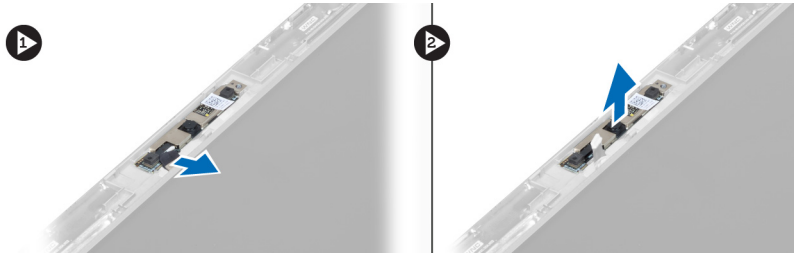


Installing the Display Panel

1. Place the camera cable on the back of the display panel.
2. Connect the display cable to its connector on the display panel.
3. Place the display panel to its original position on the display assembly.
4. Tighten the screws to secure the display panel to the display assembly.
5. Connect the camera cable to camera module.
6. Install :
 - a) display bezel
 - b) display assembly
 - c) display hinge cover
 - d) battery
 - e) palmrest
 - f) keyboard
 - g) access panel
7. Follow the procedures in *After Working Inside Your Computer*.

Removing the Camera Module

1. Follow the procedures in *Before Working Inside Your Computer*.
2. Remove:
 - a) access panel
 - b) keyboard
 - c) palmrest
 - d) battery
 - e) display hinge cover
 - f) display assembly
 - g) display bezel
3. Disconnect the camera cable from the camera module and remove the camera module from the display assembly.

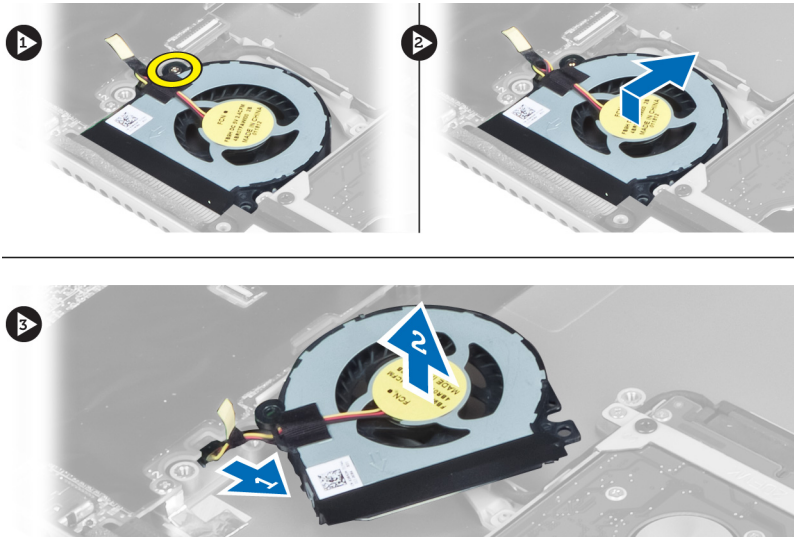


Installing the Camera Module

1. Connect the camera cable to the camera module and place the camera module to its original position on the display assembly.
2. Install :
 - a) display bezel
 - b) display assembly
 - c) display hinge cover
 - d) battery
 - e) palmrest
 - f) keyboard
 - g) access panel
3. Follow the procedures in *After Working Inside Your Computer*.

Removing the Fan

1. Follow the procedures in *Before Working Inside Your Computer*.
2. Remove:
 - a) access panel
 - b) keyboard
 - c) palmrest
 - d) battery
 - e) display hinge cover
 - f) display assembly
3. Remove the screw that secures the fan to the computer. Then, lift the fan and disconnect the fan cable from the system board.

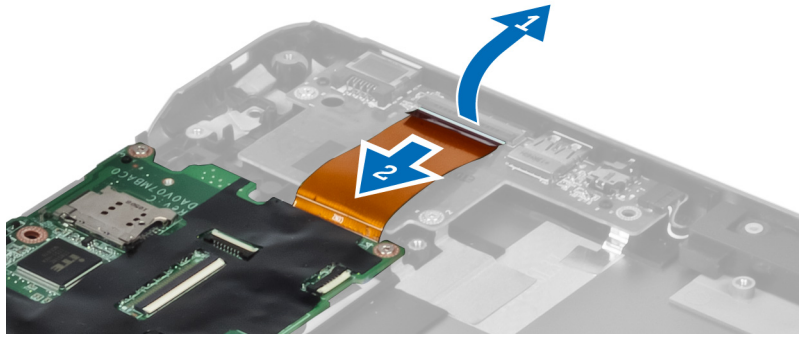


Installing the Fan

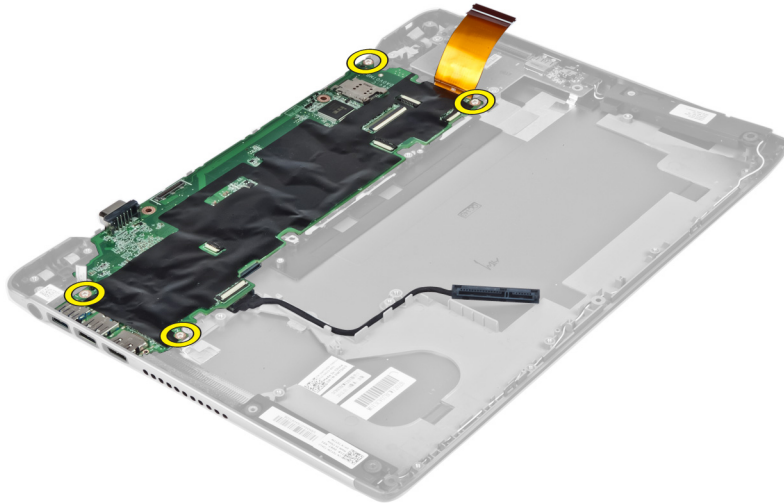
1. Connect the fan cable to the system board.
2. Tighten the screws to secure the fan to the computer.
3. Install :
 - a) display assembly
 - b) display hinge cover
 - c) battery
 - d) palmrest
 - e) keyboard
 - f) access panel
4. Follow the procedures in *After Working Inside Your Computer*.

Removing the System Board

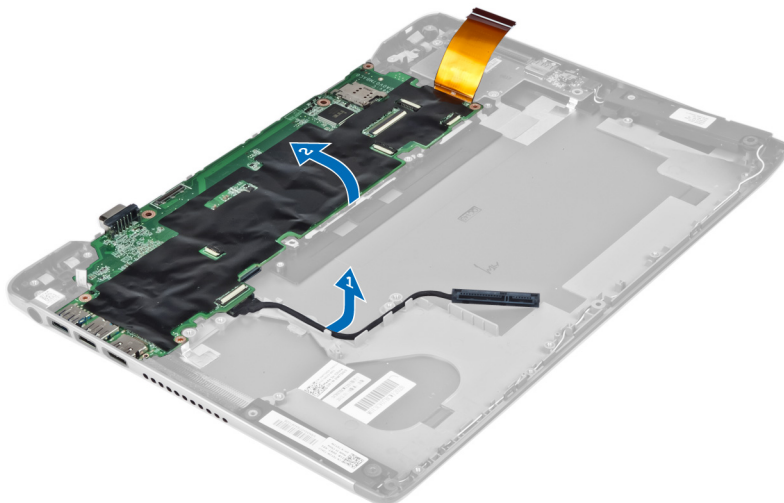
1. Follow the procedures in *Before Working Inside Your Computer*.
2. Remove:
 - a) access panel
 - b) keyboard
 - c) palmrest
 - d) display hinge cover
 - e) display assembly
 - f) fan
3. Disconnect the I/O cable from the I/O daughter board.



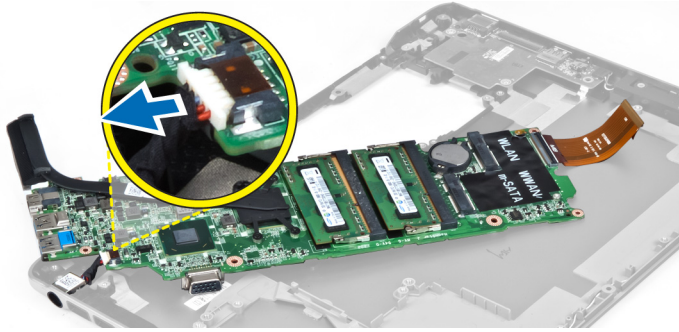
4. Remove the screws that secure the system board to the computer.



5. Remove the hard-drive cable from its routing and flip the system board to access the power connector cable.



6. Disconnect the power-connector cable from the system board.

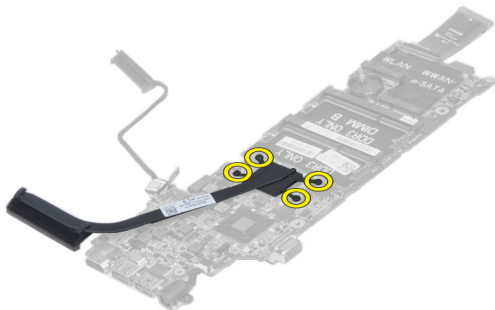


Installing the System Board

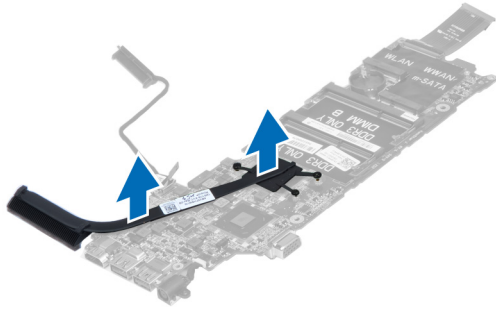
1. Connect the power connector cable to the system board.
2. Thread the hard drive cable through its routing tabs.
3. Tighten the screws to secure the system board to the computer.
4. Connect the I/O board cable to the I/O board.
5. Install :
 - a) fan
 - b) display assembly
 - c) display hinge cover
 - d) battery
 - e) palmrest
 - f) keyboard
 - g) access panel
6. Follow the procedures in *After Working Inside Your Computer*.

Removing the Heat Sink

1. Follow the procedures in *Before Working Inside Your Computer*.
2. Remove:
 - a) access panel
 - b) keyboard
 - c) palmrest
 - d) display hinge cover
 - e) display assembly
 - f) fan
 - g) system board
3. Remove the screws that secure the heat sink to the system board.



4. Remove the heat sink from the system board,

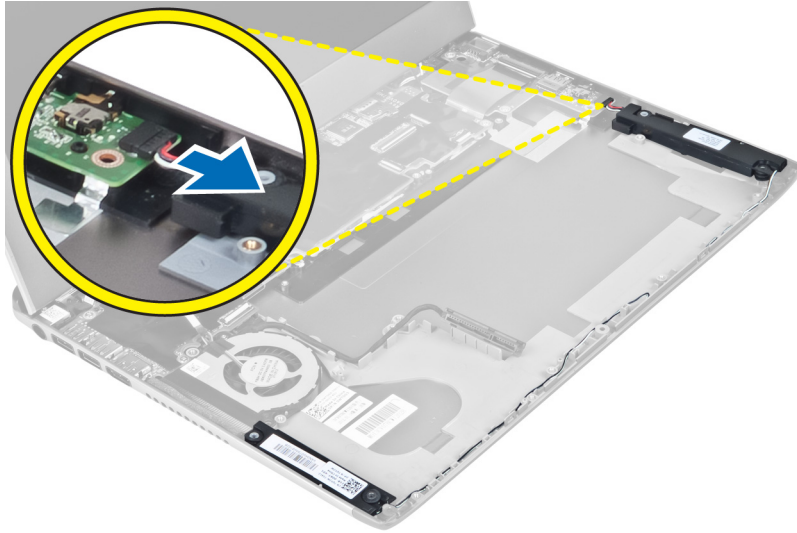


Installing the Heat Sink

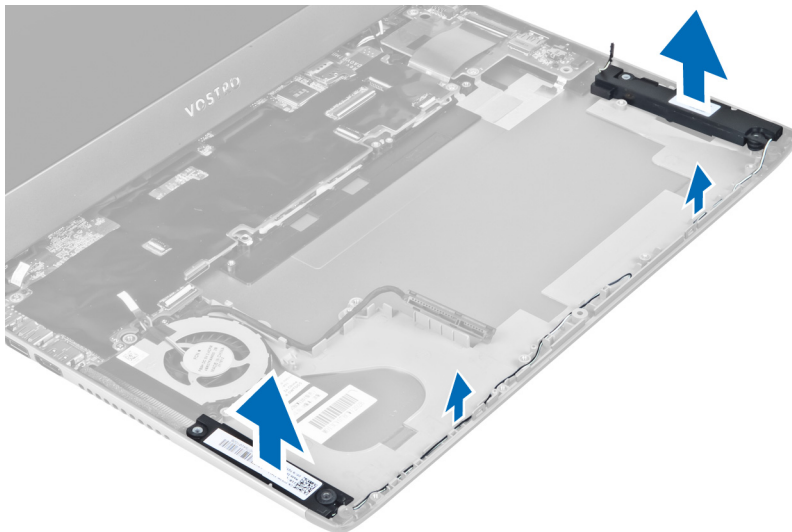
1. Tighten the screws to secure the heat sink to the system board.
2. Install :
 - a) system board
 - b) fan
 - c) display assembly
 - d) display hinge cover
 - e) battery
 - f) palmrest
 - g) keyboard
 - h) access panel
3. Follow the procedures in *After Working Inside Your Computer*.

Removing the Speakers

1. Follow the procedures in *Before Working Inside Your Computer*.
2. Remove:
 - a) access panel
 - b) keyboard
 - c) palmrest
 - d) battery
 - e) hard drive
3. Disconnect the speaker cable from the I/O board.



4. Release the speaker cables from their routing and remove the speakers from the computer.

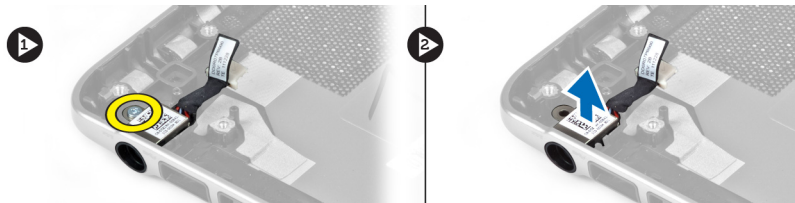


Installing the Speakers

1. Place the speakers on the computer and thread the speakers cable through the routing tabs.
2. Connect the speaker cable to the I/O board
3. Install :
 - a) hard drive
 - b) battery
 - c) palmrest
 - d) keyboard
 - e) access panel
4. Follow the procedures in *After Working Inside Your Computer*.

Removing the Power Connector

1. Follow the procedures in *Before Working Inside Your Computer*.
2. Remove:
 - a) access panel
 - b) keyboard
 - c) palmrest
 - d) battery
 - e) display hinge cover
 - f) display assembly
 - g) fan
 - h) system board
3. Remove the screw that secures the power connector to the computer and remove the power connector from the computer.

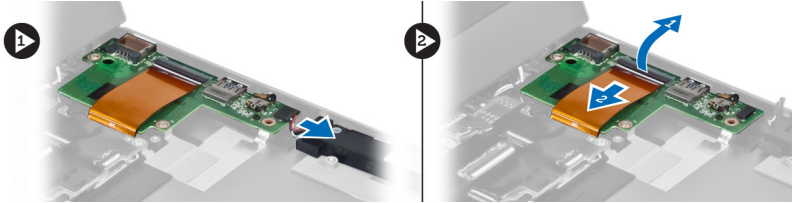


Installing the Power Connector

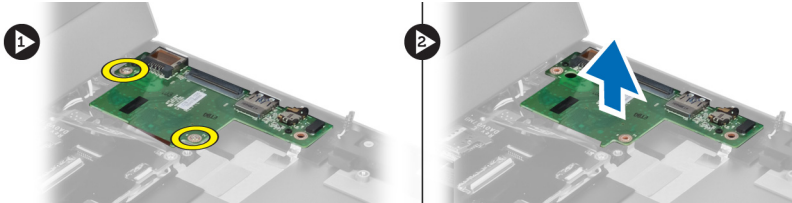
1. Tighten the screw to secure the power connector to the computer.
2. Install :
 - a) system board
 - b) fan
 - c) display assembly
 - d) display hinge cover
 - e) battery
 - f) palmrest
 - g) keyboard
 - h) access panel
3. Follow the procedures in *After Working Inside Your Computer*.

Removing the Input/Output (I/O) board

1. Follow the procedures in *Before Working Inside Your Computer*.
2. Remove:
 - a) access panel
 - b) keyboard
 - c) palmrest
 - d) battery
3. Disconnect the speaker cable and the I/O-board cable from the I/O board.



4. Remove the screws that secure the I/O board to the computer and remove it from the computer.



Installing the I/O Board

1. Connect the speaker cable and the I/O-board cable to the I/O board.
2. Tighten the screws to secure the I/O board to the computer.
3. Install :
 - a) battery
 - b) palmrest
 - c) keyboard
 - d) access panel
4. Follow the procedures in *After Working Inside Your Computer*.

System Setup

System Setup enables you to manage your computer hardware and specify BIOS-level options. From the System Setup, you can:

- Change the NVRAM settings after you add or remove hardware
- View the system hardware configuration
- Enable or disable integrated devices
- Set performance and power management thresholds
- Manage your computer security


Boot Sequence

Boot Sequence allows you to bypass the System Setup-defined boot device order and boot directly to a specific device (for example: optical drive or hard drive). During the Power-on Self Test (POST), when the Dell logo appears, you can:


- Access System Setup by pressing <F2> key
- Bring up the one-time boot menu by pressing <F12> key

The one-time boot menu displays the devices that you can boot from including the diagnostic option. The boot-menu options are:

- Removable Drive (if available)
- STXXXX Drive

 **NOTE:** XXX denotes the SATA drive number.

- Optical Drive
- Diagnostics

 **NOTE:** Choosing Diagnostics, will display the **ePSA diagnostics** screen.

The boot sequence screen also displays the option to access the System Setup screen.

Navigation Keys

The following table displays the system setup navigation keys.




 **NOTE:** For most of the system setup options, changes that you make are recorded but do not take effect until you restart the system.

Table 1. Navigation Keys

Keys	Navigation
Up arrow	Moves to the previous field.
Down arrow	Moves to the next field.

Keys	Navigation
<Enter>	Allows you to select a value in the selected field (if applicable) or follow the link in the field.
Spacebar	Expands or collapses a drop-down list, if applicable.
<Tab>	Moves to the next focus area.
	 NOTE: For the standard graphics browser only.
<Esc>	Moves to the previous page till you view the main screen. Pressing <Esc> in the main screen displays a message that prompts you to save any unsaved changes and restarts the system.
<F1>	Displays the System Setup help file.

System Setup Options

 **NOTE:** The system setup options may vary depending on the computer model.

The Main tab lists out the primary hardware features of the computer. The table below defines the function of each option.

Table 2. Main Options

Main	
System Information	Displays the computer model number.
System Time	Allows you to reset the time on the computer's internal clock.
System Date	Allows you to reset the date on the computer's internal calendar.
BIOS Version	Displays the BIOS revision.
Product Name	Displays the product name and the model number.
Service Tag	Displays the service tag of your computer.
Asset Tag	Displays the asset tag of your computer (if available).
CPU Type	Displays the type of processor.
CPU Speed	Displays the speed of the processor.
CPU ID	Displays the processor ID.
CPU Cache	
	L1 Cache
	Displays the processor L1 cache size.

Main		
	L2 Cache	Displays the processor L2 cache size.
	L3 Cache	Displays the processor L3 cache size.
Fixed HDD		Displays the model number and capacity of the hard drive.
SATA ODD		Displays the model number and capacity of the optical drive.
mSata Device		Displays the model number and capacity of the mini-Sata device.
AC Adapter Type		Displays the type of the AC adapter.
Extended Memory		Displays the memory installed on the computer.
System Memory		Displays the memory in-built on the computer.
Memory Speed		Displays the memory speed.
Keyboard Type		Displays the type of keyboard.

The Advanced tab allows you to set various functions that affect the performance of the computer. The table below defines the function of each option and its default value.

Table 3. Advanced Options

Advanced		
Intel SpeedStep	Enable or disable the Intel SpeedStep feature.	Default: Enabled
Virtualization	Enable or disable the Intel Virtualization feature.	Default: Enabled
Integrated NIC	Enable or disable the power supply to the on-board network card.	Default: Enabled
USB Emulation	Enable or disable the USB emulation feature.	Default: Enabled
USB Wake Support	Allows USB devices to wake-up the computer from standby. This feature is enabled only when the AC adapter is connected.	Default: Disabled

Advanced

SATA Operation	Change the SATA controller mode to either ATA or AHCI.	Default: AHCI
Adapter Warnings	Enables or disables adapter warnings.	Default: Enabled
Function Key Behavior	Specifies the behavior of the function key <Fn> .	Default: Function key first
Charger Behavior	Specifies if the computer battery will be charged when connected to an AC power source.	Default: Enabled
Battery Health	Specifies the health of the battery.	
Intel Rapid Start Technology	Allows you to configure the Intel rapid start technology	
Miscellaneous Devices	These fields let you enable or disable various on-board devices.	
External USB Ports	Enables or disables external USB ports.	Default: Enabled
Microphone	Enables or disables microphone.	Default: Enabled
Camera	Enables or disables camera.	Default: Enabled
Media Card Reader	Enables or disables media card reader.	Default: Enabled
Optical Drive	Enables or disables optical drive.	Default: Enabled
Fingerprint Reader	Enables or disables fingerprint reader.	Default: Enabled
Boot Disable	Enables or disables boot.	Default: Disabled
USB debug	Enables or disables USB debug.	Default: Disabled
Internal Bluetooth	Enables or disables internal bluetooth.	Default: Enabled
Internal WLAN	Enables or disables WLAN.	Default: Enabled
Internal WWAN	Enables or disables WWAN.	Default: Enabled

The Security tab displays the security status and allows you to manage the security features of the computer.

Table 4. Security Options

Security	
Set Service Tag	This field displays your system's service tag. If the service tag is not already set, this field can be used to enter it.
Admin Password	This field displays if a admin password is set for this computer or not (Default: Cleared/Not installed)
System Password	This field displays if a system password is set for this computer or not (Default: Cleared/Not installed)
Hdd Password State	This field displays if a HDD password is set for this computer or not (Default: Cleared)
Set Supervisor Password	Allows you to change or delete the administrator password.
Set HDD Password	Allows you to set a password on the computer's internal hard drive (HDD).
Password Change	Allows you to add/remove permission for changing passwords.
Password Bypass	Allows you to bypass the system password and the internal HDD password prompts during a system restart/ resume from hibernate state. (Default: Disabled)
Computrace	Enable or disable the Computrace feature on your computer.

The Boot tab allows you to change the boot sequence.



Table 5. Boot Options

Boot	
Boot Priority Order	Specifies the order of different devices in which the computer will boot through at start up.
Removable Drive	Specifies the removable drive the computer can boot through.
Hard Disk Drives	Specifies which hard drive the computer can boot through.
USB Storage Device	Specifies which USB storage device the computer can boot through.
CD/DVD/CD-RW Drive	Specifies which CD/DVD the computer can boot through.
Network	Specifies which network device the computer can boot through.

Exit — This section allows you to save, discard, and load default settings before exiting from System Setup.

Updating the BIOS

It is recommended to update your BIOS (system setup), on replacing the system board or if an update is available. For notebooks, ensure that your computer battery is fully charged and connected to a power outlet

1. Restart the computer.
2. Go to support.dell.com/support/downloads.
3. If you have your computer's Service Tag or Express Service Code:
 -  **NOTE:** For desktops, the service tag label is available on the front of your computer.
 -  **NOTE:** For notebooks, the service tag label is available on the bottom of your computer.
 - a) Enter the **Service Tag** or **Express Service Code** and click **Submit**.
 - b) Click **Submit** and proceed to step 5.
4. If you do not have your computer's service tag or express service code, select one of the following:
 - a) **Automatically detect my Service Tag for me**
 - b) **Choose from My Products and Services List**
 - c) **Choose from a list of all Dell products**
5. On the application and drivers screen, under the **Operating System** drop-down list, select **BIOS**.
6. Identify the latest BIOS file and click **Download File**.
7. Select your preferred download method in the **Please select your download method below window**; click **Download Now**.

The **File Download** window appears.
8. Click **Save** to save the file on your computer.
9. Click **Run** to install the updated BIOS settings on your computer.


Follow the instructions on the screen.


System and Setup Password

You can create a system password and a setup password to secure your computer.

Password Type	Description
System password	Password that you must enter to log on to your system.
Setup password	Password that you must enter to access and make changes to the BIOS settings of your computer.

 **CAUTION:** The password features provide a basic level of security for the data on your computer.

 **CAUTION:** Anyone can access the data stored on your computer if it is not locked and left unattended.

 **NOTE:** Your computer is shipped with the system and setup password feature disabled.

Assigning a System Password and Setup Password

You can assign a new **System Password** and/or **Setup Password** or change an existing **System Password** and/or **Setup Password** only when **Password Status** is **Unlocked**. If the Password Status is **Locked**, you cannot change the System Password.



NOTE: If the password jumper is disabled, the existing System Password and Setup Password is deleted and you need not provide the system password to log on to the computer.

To enter a system setup, press <F2> immediately after a power-on or reboot.

1. In the **System BIOS** or **System Setup** screen, select **System Security** and press <Enter>. The **System Security** screen appears.
2. In the **System Security** screen, verify that **Password Status** is **Unlocked**.
3. Select **System Password**, enter your system password, and press <Enter> or <Tab>. Use the following guidelines to assign the system password:
 - A password can have up to 32 characters.
 - The password can contain the numbers 0 through 9.
 - Only lower case letters are valid, upper case letters are not allowed.
 - Only the following special characters are allowed: space, ("), (+), (,), (-), (.), (/), (:), (I), (\), (l), (^).

Re-enter the system password when prompted.

4. Type the system password that you entered earlier and click **OK**.
5. Select **Setup Password**, type your system password and press <Enter> or <Tab>. A message prompts you to re-type the setup password.
6. Type the setup password that you entered earlier and click **OK**.
7. Press <Esc> and a message prompts you to save the changes.
8. Press <Y> to save the changes. The computer reboots.

Deleting or Changing an Existing System and/or Setup Password

Ensure that the **Password Status** is Unlocked (in the System Setup) before attempting to delete or change the existing System and/or Setup password. You cannot delete or change an existing System or Setup password, if the **Password Status** is Locked.

To enter the System Setup, press <F2> immediately after a power-on or reboot.

1. In the **System BIOS** or **System Setup** screen, select **System Security** and press <Enter>. The **System Security** screen is displayed.
2. In the **System Security** screen, verify that **Password Status** is **Unlocked**.
3. Select **System Password**, alter or delete the existing system password and press <Enter> or <Tab>.
4. Select **Setup Password**, alter or delete the existing setup password and press <Enter> or <Tab>.



NOTE: If you change the System and/or Setup password, re-enter the new password when prompted. If you delete the System and/or Setup password, confirm the deletion when prompted.

5. Press <Esc> and a message prompts you to save the changes.
6. Press <Y> to save the changes and exit from the System Setup. The computer reboots.

Diagnostics

If you experience a problem with your computer, run the ePSA diagnostics before contacting Dell for technical assistance. The purpose of running diagnostics is to test your computer's hardware without requiring additional equipment or risking data loss. If you are unable to fix the problem yourself, service and support personnel can use the diagnostics results to help you solve the problem.

Enhanced Pre-Boot System Assessment (ePSA) Diagnostics

The ePSA diagnostics (also known as system diagnostics) performs a complete check of your hardware. The ePSA is embedded with the BIOS and is launched by the BIOS internally. The embedded system diagnostics provides a set of options for particular devices or device groups allowing you to:

- Run tests automatically or in an interactive mode
- Repeat tests
- Display or save test results
- Run thorough tests to introduce additional test options to provide extra information about the failed device(s)
- View status messages that inform you if tests are completed successfully
- View error messages that inform you of problems encountered during testing



CAUTION: Use the system diagnostics to test only your computer. Using this program with other computers may cause invalid results or error messages.



NOTE: Some tests for specific devices require user interaction. Always ensure that you are present at the computer terminal when the diagnostic tests are performed.

1. Power-on the computer.
2. As the computer boots, press the <F12> key as the Dell logo appears.
3. On the boot menu screen, select the **Diagnostics** option.
The **Enhanced Pre-boot System Assessment** window is displayed, listing all devices detected in the computer. The diagnostics starts running the tests on all the detected devices.
4. If you wish to run a diagnostic test on a specific device, press <Esc> and click **Yes** to stop the diagnostic test.
5. Select the device from the left pane and click **Run Tests**.
6. If there are any issues, error codes are displayed.
Note the error code and contact Dell.

Device Status Lights

Table 6. Device Status Lights



Turns on when you turn on the computer and blinks when the computer is in a power management mode.



Turns on when the computer reads or writes data.



Turns on steadily or blinks to indicate battery charge status.



Turns on when wireless networking is enabled.

Battery Status Lights

If the computer is connected to an electrical outlet, the battery light operates as follows:

Alternately blinking amber light and white light	An unauthenticated or unsupported non-Dell AC adapter is attached to your laptop.
Alternately blinking amber light with steady white light	Temporary battery failure with AC adapter present.
Constantly blinking amber light	Fatal battery failure with AC adapter present.
Light off	Battery in full charge mode with AC adapter present.
White light on	Battery in charge mode with AC adapter present.

Diagnostic Beep Codes

The following table shows the possible beep codes that may be emitted by the computer when your computer is unable to complete a power on self test.

Table 7. Diagnostic Beep Codes

Beep	Description	Possible Cause/Troubleshooting Steps
1	BIOS ROM checksum in progress of failure.	System board failure, covers BIOS corruption or ROM error
2	No RAM detected	If no memory is detected, you can perform the following steps <ul style="list-style-type: none"> • reseal the memory if an additional memory is available • install that memory if the issue persists • issue with the memory connector
3	<ul style="list-style-type: none"> • Chipset Error (North and South Bridge Chipset, DMA/IMR/Timer Error) • Time-Of-Day Clock test failure • Gate A20 failure • Super I/O chip failure • Keyboard controller test failure 	System board failure
4	RAM Read/Write failure	If no memory is detected, you can perform the following steps

Beep	Description	Possible Cause/Troubleshooting Steps
5	Real-time clock power fail	<ul style="list-style-type: none"> • reseal the memory if an additional memory is available • install that memory if the issue persists • issue with the memory connector <p>CMOS battery failure. Reseat the battery. If issue persists, there can be an issue with the coin-cell battery or the connector (that will involve replacing the system board)</p>
6	Video BIOS Test Failure	Video card failure
7	Processor Failure	Processor failure
8	Display	Display failure

Specifications



 **NOTE:** Offerings may vary by region. For more information regarding the configuration of your computer, click Start  (Start icon) → **Help and Support**, and then select the option to view information about your computer.

Table 8. System Information

Feature	Description
Chipset	Intel HM77 Express Chipset
DRAM bus width	64-bit
Flash EPROM:	
Vostro 3360 / Vostro 3460	SPI 8 MB
Vostro 3560	SPI 6 MB

Table 9. Processor

Feature	Description
Types	<ul style="list-style-type: none"> • Intel Core i3 series • Intel Core i5 series • Intel Core i7 series
L3 cache	up to 6 MB

Table 10. Memory

Feature	Description
Memory connector	two SODIMM slots
Memory capacity	2 GB, 4 GB, 6 GB, or 8 GB
Memory type	DDR3 SDRAM (1333 MHz and 1600 MHz)
Minimum memory	2 GB
Maximum memory	8 GB

Table 11. Audio

Feature	Description
Type	2 channel high definition audio
Controller:	
Vostro 3360	Cirrus Logic CS4213D

Feature	Description
Vostro 3460 / Vostro 3560	Conexant CX20672-21Z
Stereo conversion	24-bit (analog-to-digital and digital-to-analog)
Interface:	
Internal	high definition audio
External	microphone-in/stereo headphones/external speakers connector
Speakers	2 W
Volume controls	keyboard function keys and program menus

Table 12. Video

Feature	Description
Video type	<ul style="list-style-type: none"> integrated on system board discrete
Data bus:	
UMA	integrated video
Discrete:	
Vostro 3460	<ul style="list-style-type: none"> PCI-E x16 Gen1 PCI-E x16 Gen2
Vostro 3560	PCI-E x8 Gen 2
Video controller:	
UMA	<ul style="list-style-type: none"> Intel HD Graphics 3000 Intel HD Graphics 4000
Discrete:	
Vostro 3460	nVidia GeForce GT 630M
Vostro 3560	AMD Radeon HD7670M

Table 13. Camera

Feature	Description
Camera Resolution	HD 720P
Video Resolution (maximum)	1280 x 720 pixels at 30 FPS

Table 14. Communication

Feature	Description
Network adapter	10/100/1000 Mbps Ethernet LAN
Wireless	<ul style="list-style-type: none"> internal WLAN

Feature	Description
	<ul style="list-style-type: none"> Bluetooth WWAN (optional)

Table 15. Ports and Connectors

Feature	Description
Audio:	
Vostro 3360	one stereo headphone/headset/audio-out connector
Vostro 3460 / 3560	one microphone connector, one headphone connector
Video	<ul style="list-style-type: none"> one 15-pin VGA connector one 19-pin HDMI connector
Network adapter	one RJ-45 connector
USB 3.0:	
Vostro 3360	three
Vostro 3460 / Vostro 3560	four



NOTE: The powered USB 3.0 connector also supports Microsoft Kernel Debugging. The ports are identified in the documentation shipped with your computer.

Media card reader	one 8-in-1
-------------------	------------

Table 16. Display

Feature	Description		
Type	HD WLED AG		
Size:			
Vostro 3360	13.0 inches		
Vostro 3460	14.0 inches		
Vostro 3530	15.0 inches		
Dimensions:	Vostro 3360	Vostro 3460	Vostro 3560
Height	240 mm (9.44 inches)	245 mm (9.64 inches)	259 mm (10.19 inches)
Width	330 mm (12.99 inches)	340 mm (13.38 inches)	375 mm (14.76 inches)
Diagonal	330 mm (13 inches)	355.60 mm (14 inches)	381 mm (15 inches)
Active area (X/Y)	330 mm x 240 mm	340 mm x 245 mm	375 mm x 259 mm
Maximum resolution:			
Vostro 3360/3460	1366 x 768 pixels at 262K colors		
Vostro 3560	1920 x 1080 FHD		

Feature	Description
Maximum Brightness	200 nits
Operating angle	0° (closed) to 140°
Refresh rate	60 Hz
Minimum Viewing angles:	
Horizontal	40°/40°
Vertical	15°/30° (H/L)
Pixel pitch	0.23 mm x 0.23 mm

Table 17. Keyboard

Feature	Description
Number of keys:	
Vostro 3360	United States and Canada: 80 keys, Europe and Brazil: 81 keys, Japan: 84 keys
Vostro 3460/3560	United States and Canada: 86 keys, Europe and Brazil: 87 keys, Japan: 90 keys

Table 18. Touchpad

Feature	Description	
Active Area:	Vostro 3360	Vostro 3460/3560
X-axis	82.00 mm (3.22 inches)	90.00 mm (3.54 inches)
Y-axis	45.00 mm (1.77 inches)	49.00 mm (1.93 inches)

Table 19. Battery

Feature	Description		
Type:			
Vostro 3360	4-cell lithium ion (3.4 Ahr/cell or 49 W/hr)		
Vostro 3460/3560	6-cell lithium ion (2.2 Ahr/cell or 48 W/hr)		
Dimensions:	Vostro 3360	Vostro 3460	Vostro 3560
Height	20.20 mm (0.80 inch)	20 mm (0.79 inch)	20 mm (0.79 inch)
Width	208.36 mm (8.20 inches)	208 mm (8.19 inches)	208 mm (8.19 inches)
Depth	56.52 mm (2.22 inches)	51 mm (2.00 inches)	51 mm (2.00 inches)
Weight	0.33 kg (0.73 lb)	0.33 kg (0.73 lb)	0.33 kg (0.73 lb)
Charge time	approximately 4 hours (when the computer is turned off)		
Voltage:			

Feature	Description
Vostro 3360	14.8 VDC
Vostro 3460 / Vostro 3560	11.1 VDC
Temperature range:	
Operating	0 °C to 35 °C (32 °F to 95 °F)
Non-Operating	–40 °C to 65 °C (–40 °F to 149 °F)
Coin-cell battery	3 V CR2032 lithium coin cell

Table 20. AC Adapter

Feature	Description
Type:	
Vostro 3360 / Vostro 3460 / Vostro 3560 with integrated video card	65 W
Vostro 3460 with discrete video card	90 W
Vostro 3560 with quad core	90 W
Input voltage	100 VAC to 240 VAC
Input current (maximum)	1.50 A/1.60 A/1.70 A
Input frequency	50 Hz to 60 Hz
Output power	65 W and 90 W
Output current:	
65 W	3.34 A (continuous)
90 W	4.62 A
Rated output voltage	19.50 VDC (+/– 1.0 VDC)
Dimensions:	
Height	28.20 mm (1.11 inches)
Width	57.90 mm (2.28 inches)
Depth	137.16 mm (5.40 inches)
Temperature range:	
Operating	0 °C to 35 °C (32 °F to 95 °F)
Non-Operating	–40 °C to 70 °C (–40 °F to 158 °F)


Table 21. Physical

Feature	Description		
	Vostro 3360	Vostro 3460	Vostro 3560
Height	19.20 mm (0.75 inch)	30.10 mm (1.18 inches)	32.50 mm (1.27 inches)
Width	332.00 mm (13.07 inches)	345.50 mm (13.60 inches)	375.00 mm (14.76 inches)
Depth	232.50 mm (9.15 inches)	244.00 mm (9.60 inches)	259.00 mm (10.19 inches)
Weight (with battery pack)	1.66 kg (3.65 lb)	2.23 kg (4.91 lb)	2.57 kg (5.66 lb)

Table 22. Environmental

Feature	Description
Temperature:	
Operating	0 °C to 35 °C (32 °F to 95 °F)
Storage	-40 °C to 65 °C (-40 °F to 149 °F)
Relative humidity (maximum):	
Operating	10 % to 90 % (noncondensing)
Storage	5 % to 95 % (noncondensing)
Altitude (maximum):	
Operating	-15.2 m to 3048 m (-50 ft to 10,000 ft)
Non-Operating	-15.2 m to 10,668 m (-50 ft to 35,000 ft)
Airborne contaminant level	G1 as defined by ISA-71.04-1985

Contacting Dell

 **NOTE:** If you do not have an active Internet connection, you can find contact information on your purchase invoice, packing slip, bill, or Dell product catalog.

Dell provides several online and telephone-based support and service options. Availability varies by country and product, and some services may not be available in your area. To contact Dell for sales, technical support, or customer service issues:

1. Visit **support.dell.com**.
2. Select your support category.
3. If you are not a U.S. customer, select your country code at the bottom of the **support.dell.com** page, or select **All** to see more choices.
4. Select the appropriate service or support link based on your need.