

Contents

Page 2: Foreword

Page 4: Features

Page 5: Appearance & Key Function

Page 7: Connecting to PC

Page 14: Music

Page 18: Video

Page 20: Pictures

Page 21: Photo Camera

Page 22: Video Camera

Page 22: Extra

Page 26: Settings

Page 28: Video Conversion

Page 33: Limited Manufacturer's Warranty

Congratulations on purchasing your Trio Personal Media Player! To get the most out of your purchase, please take the time to carefully read through this manual.

Foreword

If any problems occur during while using your Trio, please feel free to contact Mach Speed technical support at 580-272-0035, or sending an email to mssupport@machspeed.com.

Thank you for your support and cooperation!

Mach Speed Technologies bears no responsibility for any damage or loss of personal data due to misuse of software and/or hardware, damage to the player caused by human factors, replacement of battery, or other unforeseen circumstances. To prevent loss of your data, please backup your data regularly.

Information in the manual is subject to change without notice and is subject to copyright protection. Copying or otherwise reproducing this material without prior written consent is prohibited.

Due to Firmware changes, some of the pictures and functions described in this manual may not be the same as are included with your player.

Note:

- The playback times listed refer to the maximum playback times possible, using the best power savings. The actual playback time may differ as adjustments to screen brightness, power savings modes, volume, etc are made.

- As parameters such as formats, bitrate, codecs, framerates, and resolutions differ, the player will not be compatible with all files of the listed types. If you are experiencing issues playing your files on this player, we recommend using a supported conversion tool to reconvert your file to the specifications of the device.

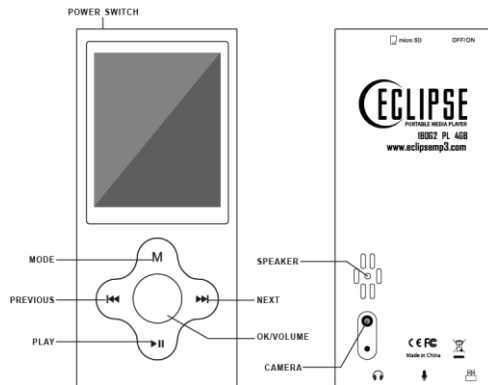
Caution:

- Do not use the player in exceptionally cold or hot, dusty, damp or dry environments.
- Do not drop, strike, or throw your player. Physical damage to your player will void ALL warranties.
- Please charge your battery when
 - Battery power icon shows an empty icon;
 - The system automatically shuts down and the power is soon off when you switch on the unit once again;
 - There is no response if you operate on any key
- Please always follow the correct disconnect procedures for your operating system. Do not disconnect power abruptly when the player is being formatted or in the process of uploading or downloading files. Otherwise it may lead to file corruption, firmware failure, and even hardware damage.
- We are not liable for any loss of data stored on this device.
- Please do not dismantle this player. Any disassembly not done by an authorized technician will void ALL warranties
- This product and manual are change without subject to notice.

Features

- 1.8" full color TFT screen (resolution:160x128)
- Supports the following audio formats: MP3, WMA, OGG, APE, FLAC and WAV
- Supports the following image formats: JPEG, BMP, GIF and PNG
- Supports the following video formats: AVI and 3GP
- 1.3MP digital camera and video recorder
- Built in microphone for voice recordings
- Supports eBook files in .txt format
- High Speed USB 2.0 interface

Appearance



Key Function

Mode: press this button one briefly to return to the last screen, or press and hold to quickly enter Music playing mode.

Previous: in a menu, use this button to navigate to the previous item in the menu. In music or video mode, briefly press this button to skip to the previous file, or press and hold this button to rewind the current file.

Next: in a menu, use this button to navigate to the next item in the menu. In music or video mode, briefly press this button to skip to the next file, or press and hold this button to fast forward the current file.

OK/Volume: in most menus, you will press this button to make a selection. While playing music or a video, pressing this button will bring up a volume controller.

PLAY: when playing a video or audio file, briefly press this button to pause or resume playback of the file. At any time, press and hold this button to power the player off.

Notes:

1. If no description says otherwise, in most modes, you will use the next or previous buttons to navigate items, the OK/volume key to select an item, and the Mode button to return to the previous screen..
2. When playing a video or audio file, briefly press the OK/Volume key to enter the volume interface, or press and hold this button to enter the audio or video submenu.

Power On/Off

To power the player on, set the power switch to the ON position, or press and hold the PLAY button for 5 seconds, until you see the Eclipse screens. To power the player off, press and hold the PLAY button for 5 seconds, or until the device powers off, then set the power switch to the OFF position.

Charging

To charge your player connect the player to a powered USB port on your computer, or to a USB wall adapter. It will take approximately 6 hours to completely charge a fully drained battery.

Note- if using a wall adapter, please ensure that the adapter is 5V, and between 400 and 600mA.

File Storage

Files of different types should be in the appropriate folders on the player. For example, Music and audio file should be stored in the Music folder on the player. Video files should be stored in the Video folder; eBook files stored in the TXT folder, and pictures files stored in the PICTURES folder. If your files are not stored in the correct folders, then the player will not be able to access them.

Connecting to PC

Loading files

Using Windows Media Player

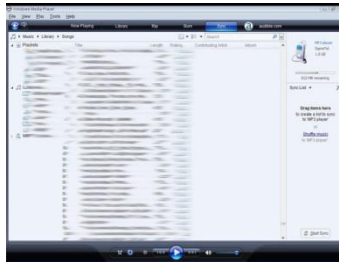
(Note: you must use Windows Media Player 10 or later to use this feature.)

(Note: this player does not support DRM encrypted audio or video files, such as those downloaded from the Windows Media Player "Overdrive" download service.)

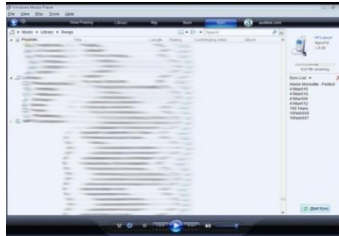
1. Open Windows Media Player and connect the player to a working USB port. Windows Media player will prompt you with a setup screen asking you to name the MP3 player.



2. Once you have named your MP3 player, select Finish, and your Windows Media Player will open to the Sync tab.



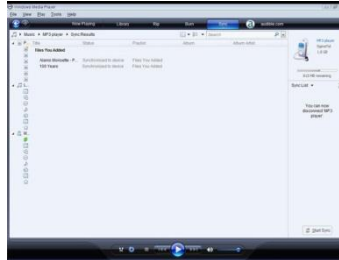
3. Drag your music to the sync list (on the right of the screen) from the list on the left. Once you have selected the music you wish to add to the player, press Sync.



4. Windows Media player will load the songs on to your player.



5. Once all the songs you have added are synced to the unit, and Windows Media Player says that is safe to disconnect your MP3 player, disconnect the device.

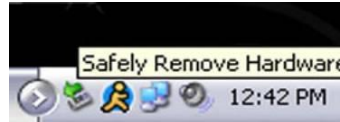


COPY AND PASTE

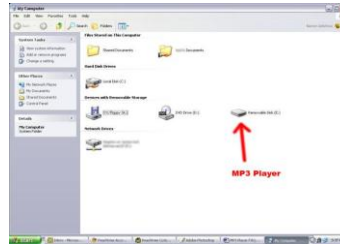
Note- This alternate method is used to load videos, pictures, and ebook files as well as audio files

1. Connect the MP3 player to a working USB port.
2. When the unit is connected to your computer, it will create a gray and green icon in the

system tray (lower right hand corner of your desktop). The icon will be called safely remove hardware.



3. Go to the “My Computer” section of your computer. In there you will find a section called “devices with removable storage”



4. Locate the drive created by the unit, generally just called Removable Disk, with a letter in Parenthesis. Drive letters vary depending on your system configuration.

5. Open the drive by either double left clicking on the drive itself, or by right clicking to open the option menu then left click on the desired drive.

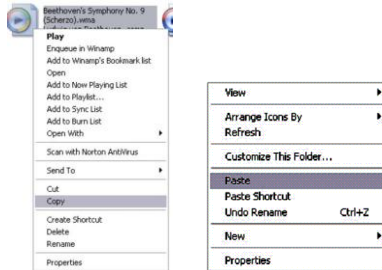


6. Locate the music stored on your computer. Generally this is stored in the “My Music” folder of your computer.

NOTE: if you are unable to locate the music on your computer, click on start, search, files and folders, then search for “*.MP3, *.WMA”.



7. Once you have located the song files, you can right click on the song itself, and select “copy”. Open the removable disk drive, right click on in the empty space, and select Paste. This will transfer the song on to your player.



8. Repeat step 7 for as many songs as you want to copy on to the unit.

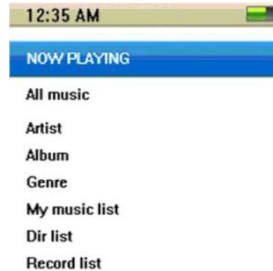
NOTE: MAC Computers

When connected to your MAC computer, the device will act as a removable drive. Simply drag your files to the device.

■ MUSIC

On the main menu, highlight "Music" and briefly press the OK button to enter the music playback mode. Please note that this player plays audio files in non encrypted MP3, WMA, OGG, APE, FLAC and WAV formats only.

->Main Interface



Now Playing: return to the file you were playing previously (this option may not always be available)

All Music: list all the music files loaded in the Music directory on the player.

Artist: Displays a list of Artists, when you select an artist, a list of their music will be displayed.

Album: Displays a list of albums loaded on the player; once an album is selected a list of music from that album is displayed.

Genre: Displays a list of genres loaded on the player; once a genre is selected, a list of music files will be displayed

My Music List: Displays your 5 playlists. Files are added to a playlist in the music submenu.

Dir List: List all music files in the Music folder. Files are displayed in a standard folder structure.

Record List: displays a list of recorded files.

-> Music Playing Interface



Note- when lyrics are displayed, the screen will not power off while a file is playing.

1. Play & Pause

Briefly press the PLAY button to toggle between play and pause modes.

2. Rewind and Forward

When an audio file is playing, press and hold the Next or Previous button to fast forward or rewind the file.

3. Change tracks

When an audio file is playing or paused, briefly press the Next or Previous button to skip to the next or previous file.

→**Music Submenu**

To enter the Music Submenu, press and hold the OK/VOL button for 3 seconds.

AB Repeat

When you select "AB Repeat", you will be returned to your file, and "A-" will be displayed on the playback screen. Briefly press PLAY to set the "A point" and "-B" will be displayed, briefly press PLAY again to set the B point, and begin playing you're a-B selection. The icon will change to "A-B". If you press PLAY again, you will cancel A-B Repeat.

Repeat

To adjust your repeat mode, select "repeat". You can select Sequence, repeat one, repeat all, shuffle, or shuffle and repeat.

Select EQ

Select from Normal, Rock, Pop, Classic, Soft, Jazz, DBB, or user EQ

Set Sound

This option allows you to select whether to fade in and out of audio files

Replay Times

Allows you to select the number of times your A-B Repeat will replay.

Replay Intervals

Allows you to select the interval (in seconds) between A-B replays.

Variable Speed

Allows you to adjust your playback tempo for MP3 format songs.

Lyric display

Allows you to toggle whether lyrics will display (if available)

Add to MyList

Allows you to add the current file to one of your 5 playlists.

Delete File

Allows you to delete the current file.

■ VIDEO

On the main menu, highlight "Video" and briefly press the OK button to enter the video mode. Please note that this player plays video files in AVI and 3GP formats with an optimum resolution of 160x128.

->Video menu

Now Playing: return to the file you were playing previously (this option may not always be available)

Dir List: Lists all the video files saved in the Video folder of the device. Files are displayed in a standard folder structure.

-> Video Playback Interface



While a video is playing, briefly press Play button to bring up the progress bar and file information. This bar will disappear if no buttons are pressed for 3 seconds

1. Play & Pause

Briefly press the PLAY button to toggle between play and pause modes.

2. Rewind and Forward

When an audio file is playing, press and hold the Next or Previous button to fast forward or rewind the file.

3. Change tracks

When an audio file is playing or paused, briefly press the Next or Previous button to skip to the next or previous file.

→**Video Submenu**

To enter the Video Submenu, press and hold the OK/VOL button at the **Dir List** page for 3 seconds.

Playback Mode

To adjust your playback mode, select "Playback Mode". You can select Sequence, Repeat one, Repeat all, or Random.

Delete File

Allows you to delete the current file.

■ PICTURES

On the main menu, highlight "Pictures" and briefly press the OK button to enter the picture mode. Please note that this player displays images in JPEG, BMP, GIF and PNG formats.

->Main Interface

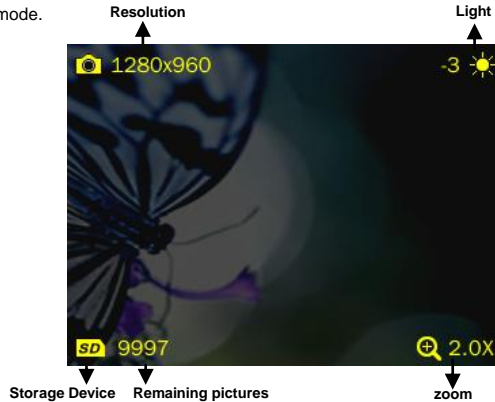
Now Playing: return to the file you were playing previously (this option may not always be available)

Dir List: Lists all the picture files saved in the Picture folder of the device. Files are displayed in a standard folder structure.

Play Mode: set your selection display to either a list or thumbnail setting. In list mode, use the next or previous buttons to navigate up and down. In Thumbnail mode, briefly press Next or previous to move left or right, and press and hold Next or Previous to move up and down.

■ PHOTO CAMERA

On the main menu, highlight "Photo Camera" and briefly press the OK button to enter the camera mode.



1. Briefly press the Play button to take pictures;
2. Press and hold the OK button to enter the Camera submenu.
3. Use the Next or Previous buttons to zoom in or out.

■ VIDEO CAMERA

On the main menu, highlight “video Camera” and briefly press the OK button to enter the video recording mode.

1. Briefly press the OK button to start recording and press it again to pause. Briefly press the M button to exit, the system will automatically save the file before exiting.
2. Press and hold the OK button to enter the Video Camera submenu.

■ EXTRA

On the main menu, highlight “Extra” and briefly press the OK button to enter the Extra options.

1) Record

Select Record on the extra menu to enter the recording interface. Press and hold the OK button to enter the recording submenu.

Start, pause and save recordings

Briefly press the PLAY button to begin recording a file, and press it again to pause. To save your recording, pause the file and briefly press the M button. A prompt will come up, and select OK.

Recording Submenu

Record Format

Set the format of files you record: WAV or MP3.

Record Quality

Set record quality, low, medium and high.

Record Gain

Adjust the volume of recording you make.

2) eBook

Select eBook on the extra menu to enter the recording interface.

eBook selection menu

Now Reading: return to the file you were playing previously (this option may not always be available)

Dir List: Lists all the eBook files saved in the TXT folder of the device. Files are displayed in a standard folder structure.

Tag List: List all the text files with tags, or bookmarks. This player will support up to 32 tags.

Turn pages

In the reading interface, briefly press the OK button to switch between Auto Mode



which will automatically turn the page for you, and Manual Mode



. In Manual Mode, you will use the Next or Previous buttons to turn the page.

eBook submenu

Skip To

Press ◀◀/▶▶ to adjust reading percentage, jumping to the page corresponding to the set percentage. Step: 5%.

Auto Play Gap

Set the length of time a page is displayed before it is turned in auto play mode (time is in seconds)

Add Bookmark

Add a bookmark, or tag to the current file and page.

Delete File

Allows you to delete the current file.

3) Calendar

In the calendar, use the Next or Previous buttons to adjust the value.

4) Stopwatch

When in stopwatch mode, briefly press the OK button to start or pause a timer. Briefly press the Next button to stop the current timer, and begin timing on a second timer. Pause the timer, press and hold the OK button to clear all timers.

5) Calculator

Use the Next and Previous buttons to navigate the calculator, and briefly press the OK button to select.

6) PC Camera

Select PC Camera and connect the player to your computer's USB port. Your computer will run a setup and install the player as a PC camera, which will allow you to use the player as a webcam.

7) Radio

Before entering the Radio mode, please insert your headphones, as these will act as an antenna for the player.

■ Settings

Date & Time

1. Adjust Date

Press and hold the OK button to swap between year/month/day, etc, and use the Next or Previous buttons to adjust the value.

2. Adjust Time

Press and hold press the OK button to swap between hour/minute/AM-PM, etc, and use the Next or Previous buttons to adjust the value.

Display

1. Backlight

This feature allows you to select how long the system is idle before the screen powers off to conserve power. Select -Off, 5S, 10S, 20S, 30S, 1M and 5M. Note that this feature is disabled in video and text modes, as well as picture mode and when lyrics are displayed in music mode.

2. Brightness time

Select the brightness level for the player: 1, 2, 3, 4 or 5.

Power Saving

1. Idle time

Select how long the player is idle before powering off to conserve battery life. Choose Off, 10S, 30S, 1M, 3M, 5M or 10M

2. Sleep Time

Set a timer to power off the device after a certain amount of time elapses, even if the player is playing a video or music. Choose Off, 10M, 30M, 1Hr, 2Hr, 3Hr, 4Hr or 5Hr.

Language

Choose from Simplified Chinese, Italian, English, Traditional Chinese, French, German, Dutch, Spanish, Czech, Danish, Polish, Romanian etc.

Player Information

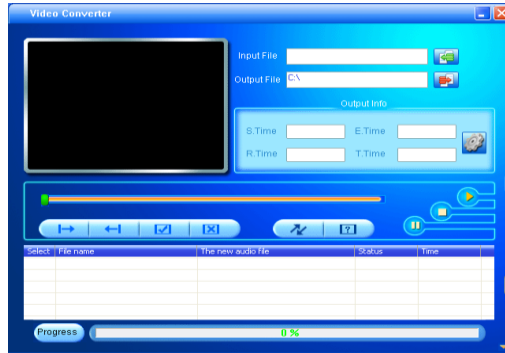
Shows basic information about the player such as the Firmware Version, Total Space, Free Space



■ Video Conversion

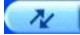
If your video files will not play on your Trio player, you can convert them using the conversion tool which is included with the device. To do so, you will need to first install the software.

When you connect the player to your computer, it will act as a removable disk drive. Open the drive, as described in the Copy and Paste section of the manual. Inside, there is a folder called "Tools & Manual". Open this folder, and then the "Tools" folder. Inside is a Setup.exe application. Run this file and follow the onscreen instructions. Please note that depending on your OS version and security settings you may need to right click on the file and select "run as administrator"

Once installed, you will have an item called "Media Player Utilities" in your programs list. Select this item and then "Video Converter", or "AVI Converter".



Once the conversion tool is open, the first step in actually converting and loading the file is to select the file you wish to convert. Locate the “Input File” line towards the top of the window, and select the “Add file” button  and use the file selection window to select the file you want to convert and load. The second step is to select the location you want the converted file saved to. Locate the “Output File” line immediately below the “Input File” line and select the “Video Path” button  and use the “browse for folder” window to

select the save location. As this conversion tool is already calibrated to convert your files for optimal quality, you simply need to select the “Begin” button  and the player will convert the file for you.

Please note that if the player is connected to your computer when you open this tool, you will see an additional window to the right of the main window. This is the media player window.

Please note that the window will display the drive letter assigned to your player; if you have multiple players connected, it will have an option for each drive. Below the drive letter is a pie chart showing the amount of storage space available and the amount used. There is also a check box giving you the option to automatically copy the video file to your drive. Selecting this will save you a step in loading your video files, as the converter will save a copy of the converted file to your computer, and then automatically load it on to the player as well!

Once the file has finished converting and loading on to your player, follow the “Safely remove hardware” instructions outlined above, and enjoy your video.

If you receive an error when attempting to convert a video file, then you likely lack the proper video codecs on your computer. There are several large codec packs which will contain the majority of the common video codecs, such as the K-Lite Mega codec pack, and the Storm codec pack. We recommend downloading them from a trusted source and installing them and attempting to convert the files then.

If at any point, you have questions about your player or experience an issue with your player, please feel free to contact our technicians at mssupport@machspeed.com or by phone at 580 272 0035.

Caution

Modifications not approved by the party responsible for compliance could void the user's authority to operate the equipment.

NOTE- This equipment has been tested and found to comply with the limits for Class B Digital device, pursuant to part 15 of the FCC rules. These limits are designed to provide reasonable protection against harmful interference in a residential installation. This equipment generate, uses and can radiate radio frequency energy and, if not installed and used in accordance with the instructions, may cause harmful interference to radio or telephone reception, which can be determined by turning the equipment off and on, the user in encouraged to try to correct the interference by one or more of the following measures:

- Reorient or relocate the receiving antenna.
- Increase the separation between the equipment and the receiver
- Connect the equipment to an outlet on a circuit different from that to which the receiver is connected.

Consult the dealer or an experienced radio/TV technician for help.

■ Limited Manufacturer's Warranty

1. MACH SPEED products carry a one year from date of purchase warranty This warranty is nontransferable.

2. Mach-Speed Technologies warrants to the original registered end-user purchaser that Mach Speed products will be free from defects in materials and workmanship for one year from the date of new purchase. During the warranty period, and upon proof of purchase the product will be repaired or replaced (with the same or a similar model, which may be a refurbished model) at Mach Speed Technologies option, without charge for either parts or labor. This warranty shall not apply if the product is modified, tampered with, misused, physically damaged, or subjected to abnormal working conditions (including, but not limited to, electrical, fire, and water damage).THIS WARRANTY DOES NOT GUARANTEE YOU UNINTERRUPTED SERVICE. REPAIR OR REPLACEMENT AS PROVIDED UNDER THIS LIMITED WARRANTY IS THE EXCLUSIVE REMEDY OF THE PURCHASER.

To obtain service under this warranty, you must contact our Technical department at (580) 272-0035 to obtain an RMA number. Mach Speed Technologies will only replace or repair product that is sent to us with an authorized RMA number.

Return Merchandise Authorization (RMA):

1. Customers will be charged additional for testing and repackaging when returned "bad" items are found to have no problems or defects.

2. Items found to be out-of-warranty or not belonging to Mach Speed Technologies will not

be replaced. Instead, they will be returned back to the customer freight-collect.

3. RMA's will be shipped back to customer via UPS ground delivery. Express shipping will be at additional costs to the customer.

4. All RMA's must be accompanied with a copy of original receipt or invoice with name, return address and phone number of customer.

Exchanges:

1. Items will not be cross-shipped for any reason.

2. The original receipt or invoice must accompany all exchanges.

3. All exchanges must be shipped freight pre-paid by the customer and include a pre-paid shipping label for shipment back to the customer. Furthermore, the customer is expected to insure all items being shipped back. Mach Speed Technologies is not responsible for any losses or damages for such equipment.

4. All sales are final. Mach Speed Technologies will not accept any returns for credit or refund.

Discrepancy & Shipping Damage:

1. For wrong items, missing items, shipping damage, or other discrepancy; customer should report to RMA department on the day in which the items were received. Any claims after one business day of receipt will not be honored.

2. For any shipping damage, customer must file a claim with their carrier immediately. All

items are shipped insured, thus must be reported for coverage.

3. Customer is responsible for paying any freight charge caused by refused shipment or unclaimed goods.

4. Mach Speed Technologies will make every reasonable effort to deliver on time however; Mach Speed Technologies will not be liable for late or lost shipments.

Consequential Damages and Limitations:

1. Mach Speed Technologies shall not be liable for any failure to perform or delay in performing any of its obligations when such failure or delay is due to circumstances beyond its reasonable control, including, without limitation, any act of God, war, strike, riot, fire, flood, earthquake, lock-out, late or non-delivery by suppliers, shortage or unavailability of materials, components or transportation facilities, or any act, refusal to act, regulation, order or intervention of any governmental authority.

2. Under no circumstances shall Mach Speed Technologies be liable for any special, indirect, incidental or consequential damages of any kind or nature whatsoever, including, without limitation; lost goodwill, lost resale profits, loss of data or software, work stoppage or impairment of other goods, and whether arising out of breach of any express or implied warranty, breach of contract, tort (including negligence), strict product liability or otherwise, even if advised of the possibility of such damage or if such damage could have been reasonably foreseen.