

External V.92 56K USB Data/Fax Modem

USB56KEM3

DE: Bedienungsanleitung - de.startech.com

FR: Guide de l'utilisateur - fr.startech.com

ES: Guía del usuario - es.startech.com

IT: Guida per l'uso - it.startech.com

NL: Gebruiksaanwijzing - nl.startech.com

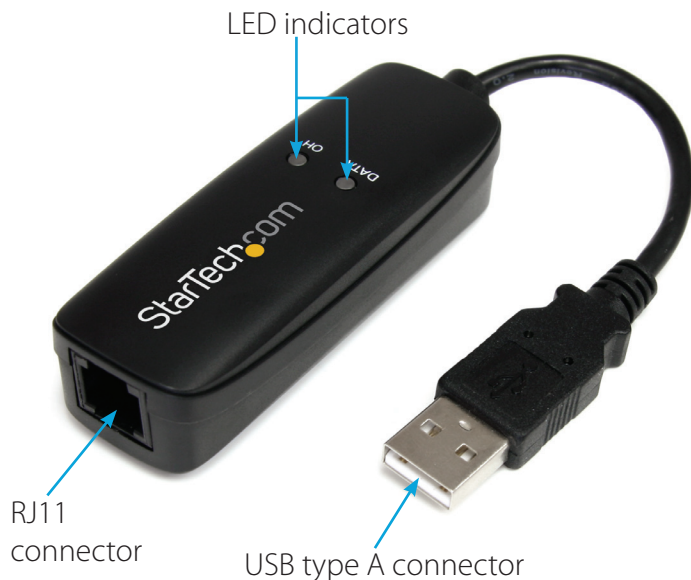
PT: Guia do usuário - pt.startech.com

Packaging Contents

- 1 x USB Modem
- 1 x RJ11 Cable
- 1 x Driver CD
- 1 x Instruction Manual

System Requirements

- USB enabled computer system with available USB port
- Microsoft® Windows® 2000/ XP/ Server 2003/ Vista/ Server 2008 R2/ 7 (32/64-bit)



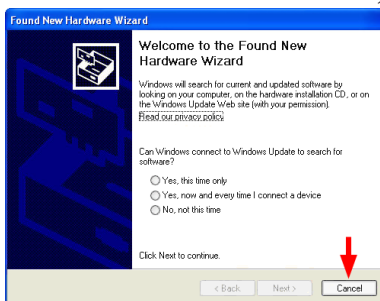
*actual product may vary from photos

Installation

Windows 2000/XP/Server 2003

*screenshots for reference only

1. Upon starting Windows, if the "Found New Hardware" wizard appears on the screen, cancel/close the window and insert the included Driver CD into the computer's CD/DVD drive.



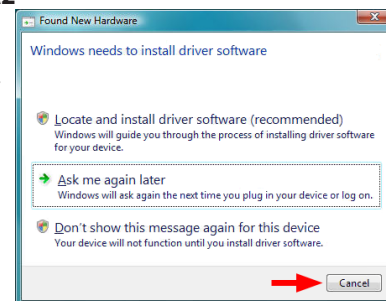
2. AutoRun will automatically launch the Driver/Software installation splash screen. If not, open "My Computer" and right-click on the CD/DVD drive the disk is inserted into and select "AutoRun".



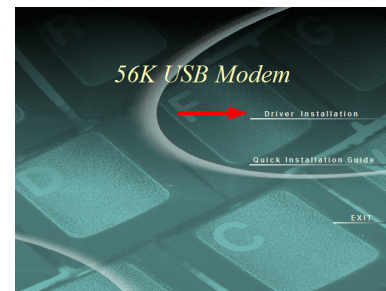
3. Select the option to install the Drivers, then select your operating system version. This should then launch the Driver Installation wizard.
4. Complete the wizard and this should automatically install all necessary drivers/software.

Windows Vista/7/Server 2008 R2

1. Upon starting Windows, if the "Found New Hardware" wizard appears on the screen, cancel/close the window or choose not to install the drivers and insert the included Driver CD into the computer's CD/DVD drive.



2. AutoRun should automatically launch the Driver/Software installation splash screen or prompt you to run AutoRun.exe. If not, open "Computer" and right-click on the CD/DVD drive the disk is inserted into and select "AutoRun".



3. Select the option to install the Drivers, then select your operating system version. This should then launch the Driver Installation wizard.
4. Complete the wizard and this should automatically install all necessary drivers/software.

Specifications

Host Interface	USB 2.0
Chipset ID	Agere/LSI SV92U2C
Connectors	1 x RJ11 female 1 x USB type A male
LEDs	1 x Data 1 x On Hold
Supported Modulations (Modem)	ITU-T V.92, V.90, K56flex, V.34, V.32, v.23, V.22 bis, V.22, V.21, Bell 212A and 103
Supported Modulations (Fax)	V.17, V.29, V.27 Ter, V.21 channel 2
Data Compression	V.44
Maximum Data Transfer Rate	56 Kbps Down 48 Kbps Up Fax: 14.4 Kbps
Power Adapter	USB Powered
Enclosure Material	Plastic
Operating Temperature	0°C ~ 55°C (32°F ~ 131°F)
Storage Temperature	10°C ~ 70°C (50°F ~ 158°F)
Humidity	20% ~ 80% RH
Dimensions (LxWxH)	75.0mm x 25.0mm x 18.0mm
Weight	25g
Compatible Operating Systems	Windows 2000/ XP/ Server 2003/ Vista/ Server 2008 R2/ 7 / 8 (32/64-bit)

LED Indicators

Name	Description
Data	Indicates when data is sending/receiving
OH	Indicates the modem is in use (dialing/connected)

FCC Compliance Statement

This equipment has been tested and found to comply with the limits for a Class B digital device, pursuant to part 15 of the FCC Rules. These limits are designed to provide reasonable protection against harmful interference in a residential installation. This equipment generates, uses and can radiate radio frequency energy and, if not installed and used in accordance with the instructions, may cause harmful interference to radio communications. However, there is no guarantee that interference will not occur in a particular installation. If this equipment does cause harmful interference to radio or television reception, which can be determined by turning the equipment off and on, the user is encouraged to try to correct the interference by one or more of the following measures:

- Reorient or relocate the receiving antenna.
- Increase the separation between the equipment and receiver.
- Connect the equipment into an outlet on a circuit different from that to which the receiver is connected.
- Consult the dealer or an experienced radio/TV technician for help.

Use of Trademarks, Registered Trademarks, and other Protected Names and Symbols

This manual may make reference to trademarks, registered trademarks, and other protected names and/or symbols of third-party companies not related in any way to StarTech.com. Where they occur these references are for illustrative purposes only and do not represent an endorsement of a product or service by StarTech.com, or an endorsement of the product(s) to which this manual applies by the third-party company in question. Regardless of any direct acknowledgement elsewhere in the body of this document, StarTech.com hereby acknowledges that all trademarks, registered trademarks, service marks, and other protected names and/or symbols contained in this manual and related documents are the property of their respective holders.

Technical Support

StarTech.com's lifetime technical support is an integral part of our commitment to provide industry-leading solutions. If you ever need help with your product, visit www.startech.com/support and access our comprehensive selection of online tools, documentation, and downloads.

For the latest drivers/software, please visit www.startech.com/downloads

Warranty Information

This product is backed by a two year warranty.

In addition, StarTech.com warrants its products against defects in materials and workmanship for the periods noted, following the initial date of purchase. During this period, the products may be returned for repair, or replacement with equivalent products at our discretion. The warranty covers parts and labor costs only. StarTech.com does not warrant its products from defects or damages arising from misuse, abuse, alteration, or normal wear and tear.

Limitation of Liability

In no event shall the liability of StarTech.com Ltd. and StarTech.com USA LLP (or their officers, directors, employees or agents) for any damages (whether direct or indirect, special, punitive, incidental, consequential, or otherwise), loss of profits, loss of business, or any pecuniary loss, arising out of or related to the use of the product exceed the actual price paid for the product. Some states do not allow the exclusion or limitation of incidental or consequential damages. If such laws apply, the limitations or exclusions contained in this statement may not apply to you.