

# HD WEB CAM 760 PRO XL USER MANUAL

MODEL 460521



  
**MANHATTAN™**

MAN-460521-UM-1010-01



# INTRODUCTION

Thank you for purchasing the MANHATTAN® HD Web Cam 760 Pro XL, Model 460521.

improve online communications, instant messaging, VoIP and social media with high-quality photos and video and better color. With Plug and Play and Windows and Mac compatibility, it's ready to go and easy to use, with included software that simplifies settings and operation.

The easy-to-follow instructions in this manual help make the setup quick and simple, so you'll also soon be enjoying the benefits of these additional features:

- Easily capture, record and share widescreen HD photos and video up to 720p – upload to Facebook, YouTube and more
- 7.6 megapixel image resolution with powerful 4x digital zoom function and built-in microphone
- Face tracking, automatic color, exposure and brightness levels maximize clarity in varying light conditions
- Personalize conversations and images with special video and frame effects
- Versatile base with clip and swivel magnetic mount ideal for flat-panel and other displays
- Lifetime Warranty

**NOTE:** Some screen images have been modified to fit the manual format.

## System Requirements

- Windows XP/Vista/7 or Mac 10.4.8
- IBM PC with USB interface
- Pentium 200 or higher CPU
- CD-ROM
- 200 MB free disk space
- 32 MB RAM

## Package Contents

- HD Web Cam 760 Pro XL
- Software CD

# INSTALLATION

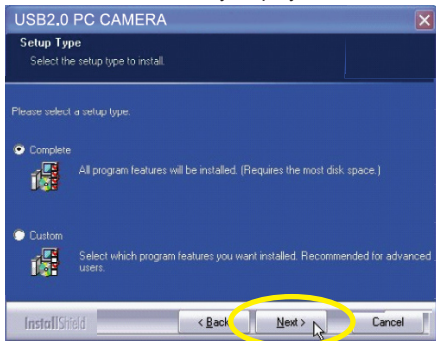
## Driver

Prior to installing the driver:

- Close any open software applications on your computer;
- Un-install any previously installed camera software or drivers;
- Disable any anti-virus software and any established firewall; and
- Ensure that the camera is *not* connected to the computer's USB port at this time.

With your computer turned on, insert the included CD in the CD-ROM drive. The installation interface will automatically display.

1. When presented with the first InstallShield Wizard screen prompt, click "Driver."
2. On the subsequent screens, click "Next" or "Continue Anyway" to proceed with the driver installation.
3. When the InstallShield Wizard prompts you with a screen saying the installation is complete, click "Finish."

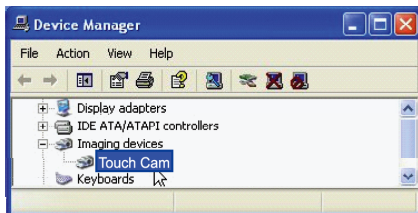


## Hardware

1. Connect the camera to your computer's USB port.
2. After a few seconds, the computer's operating system will find and recognize the connected camera, initially displaying a Welcome to the Found New Hardware Wizard screen. Click "Next."
3. On subsequent screens, click "Next" or "Continue Anyway" to proceed with the installation.
4. When the Found New Hardware Wizard prompts you with a screen that says the software installation is complete, click "Finish."

# Installation Verification

1. From the desktop, go to My Computer, then Properties.
2. Select/click on the Hardware tab, then click "Device Manager" to display your list of application folders.
3. Confirm the camera (or "Touch Cam") file appears in the Imaging Devices folder. **NOTE:** Make sure the folder doesn't have an exclamation point (!) next to it (which indicates an improper installation).
4. From the desktop, go to Control Panel, then click on Sounds and Audio Devices.
5. Select/click on the Audio tab.
6. In the Sound Recording panel, select "USB Camera" from the Default Device drop-down menu in order to activate the camera's built-in microphone.



# OPERATION

## Quick-Access Controls

In addition to a convenient exterior focus ring, this camera features a pair of icons that let you quickly perform a couple of popular functions without the need to access a software menu.

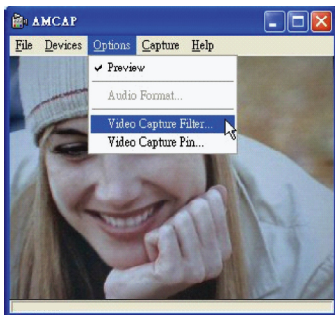
- Press the camera icon to take a snapshot.
- Press the “E” (“effects”) icon to move through a 26-option menu of useful frame styles and special effects (ranging from “Postcard” to “Merry Christmas” and from “Aged Photo” to “Mosaic,” as displayed below in Advanced Settings on the Effects screen).

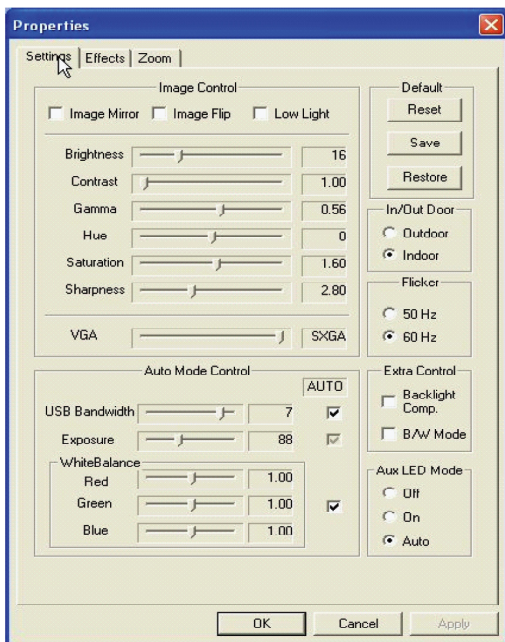
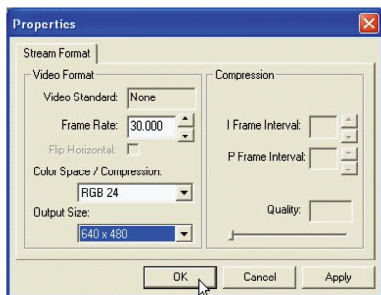


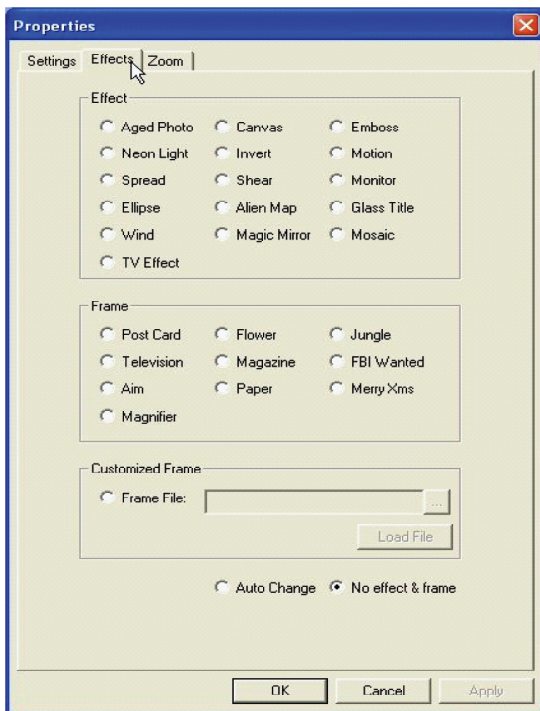
## Advanced Settings

To make any changes to the camera settings (image controls and modes and such) or to take advantage of the variety of effects (special effects and frame options), open the AMCap application (which may be found in your Control Panel settings or on your desktop, depending on your operating system). For example:

- To stabilize the video (if needed), go to Options, then to Video Capture Filter, and select the Settings tab to change between “50 Hz” and “60 Hz” to improve your results (see the screen image on the next page).
- To establish a new location for storing AVI images, go to File, then Set Capture.
- To select a video output size, go to Options, then to Video Capture Pin (which then displays the Stream Format screen and the Output Size drop-down menu, among several other Video Format and Compression options).







## FREQUENTLY ASKED QUESTIONS

**Q What can be done to rectify a dropped frame or video lag?**

**A** The camera automatically activates White Balance and Exposure (both displayed on the Auto Mode Control panel of the Settings screen) when lighting is determined to be insufficient. If continuity or delay problems occur, deselect the “Auto” option for Exposure.



**Q When using MSN, why isn't my voice heard?**

**A** The built-in microphone probably isn't activated. Check the "Sounds and Audio Devices Properties" folder in the Device Manager or Control Panel and make sure that "USB Camera" is elected as the Default Device drop-down menu option in the Sound Recording panel. You can also make sure that your Instant Messenger software is defaulted to recognize the camera. Also, confirm that the other IM user has the same software version and not one that's incompatible.

**Q How do I take 1.3-megapixel snapshots?**

**A** In the AMCAP application, go to Options, then Video Capture Pin to display the Stream Format screen. In the Output Size field, select "640 x 480" (VGA). Then return to Options and go to Video Capture Filter. In the Image Control panel, set the VGA/SXGA slide bar to "SXGA" (all the way to the right, which equates to 1280 x 960 pixels).

**Q After inserting the installation CD, the autorun program doesn't work in Windows Vista or 7. How do I get the camera to install?**

**A** This is an issue involving how these two operating systems handle the autorun.exe file. To install the software and drivers, you'll need to manually open the disk.

1. Right-click the My Computer icon and select "Explore."
2. Browse the CD drive and right-click the setup program.
3. Select "Run as administrator"; the installation will begin.
4. Follow the prompts to complete the installation.

# SPECIFICATIONS

## Standards and Certifications

- USB 2.0
- CE
- FCC
- RoHS
- WEEE

## Lens

- CMOS 1/6" color sensor; 1.3 megapixels 720p (software enhanced; interpolated to 7.6 megapixels) with 4x digital zoom
- Lens: plastic, 6 mm (0.25 in.); 64° angle; manual focus with ring
- Image focus: 30 mm to infinity

## Image

- Photo and video recording maximum resolution up to 3200 x 2400 (software enhanced)
- Supports video transfer rates up to 30 fps (640 x 480 resolution, VGA), 10 fps (1280 x 1024, VGA)
- Format: MPEG
- Color depth: 24-bit true color

## General

- Manual focus, color equalizing, exposure and brightness balance adjustments
- Built-in microphone with top-mount snapshot button
- Built-in compression ratio (JPG)

## Physical

- USB cable, 1.2 m (4 ft.)
- Dimensions: 82 x 50 x 46 mm (3.2 x 2 x 1.8 in.)
- Weight: 80 g (2.8 oz.)

## System Requirements

- Windows XP/Vista/7 or Mac 10.4.8 compatible
- IBM PC with USB interface
- Pentium 200 or higher CPU

- CD-ROM
- 200 MB free disk space
- 32 MB RAM

**Package Contents**

- HD Web Cam 760 Pro XL
- Software CD
- Quick install guide



**MANHATTAN**™  
BRINGING COMPUTERS TO LIFE

MANHATTAN® offers a complete line  
of PC Components, Peripherals, Cables and Accessories.

Ask your local computer dealer for more information  
or visit us online at

**[www.manhattan-products.com](http://www.manhattan-products.com)**

Copyright © MANHATTAN

All products mentioned are trademarks or registered trademarks of their respective owners.