

Canon

i475D Series
Desktop Photo Printer

Quick Start Guide



Canon

*i*475D_{Series}

Desktop Photo Printer

Quick Start Guide

Canon i475D Desktop Photo Printer Quick Start Guide.

Copyright

This manual is copyrighted by Canon U.S.A., Inc. with all rights reserved. Under the copyright laws, this manual may not be reproduced in any form, in whole or in part, without the prior written consent of Canon U.S.A., Inc.

© 2003 Canon U.S.A., Inc.

Disclaimer

Canon U.S.A., Inc. has reviewed this manual thoroughly in order that it will be an easy-to-use guide to your Canon i475D Desktop Photo Printer. All statements, technical information and recommendations in this manual and in any guides or related documents are believed reliable, but the accuracy and completeness thereof are not guaranteed or warranted, and they are not intended to be, nor should they be understood to be, representation or warranties concerning the products described.

Specifications are subject to change without notice.



As an ENERGY STAR partner, Canon U.S.A., Inc., has determined that this product meets the ENERGY STAR guidelines for energy efficiency.

All information regarding non-Canon products was compiled from publicly available information. No representation is made regarding the accuracy thereof.

Trademarks

- Canon is a registered trademark of Canon Inc.
- PhotoRecord is a trademark of Canon Information System Research Australia.
- Macintosh, Mac and the Mac logo are registered trademarks of Apple Computer, Inc., registered in the U.S. and other countries.
- Microsoft® and Windows® are registered trademarks of Microsoft Corporation in the U.S. and other countries.
- CompactFlash is a trademark of SanDisk Corporation.
- MEMORY STICK is a registered trademark of Sony Corporation.
- SmartMedia is a trademark of Toshiba Corporation.
- Microdrive is a trademark of International Business Machines Corporation.

- All other product and brand names are trademarks of their respective owners.

Canon U.S.A., Inc.
One Canon Plaza
Lake Success, NY 11042

Getting Help from Canon

Help Us Help You Better

Before you contact Canon, please record the following information.

Serial Number (located on the inside of the printer): _____

Model Number (located on the front of the printer): _____

Printer Driver CD-ROM number (located on the CD-ROM): _____

Purchase Date: _____

Customer Technical Support Sequence*

1. Internet — www.canontechsupport.com

For quick and comprehensive self-help in an intuitively guided interactive troubleshooting environment, the place to start is our helpful tech support web site. In addition, the latest driver downloads, answers to frequently asked questions, product information, and “where to buy” instructions are found here.

2. Email Tech Support — www.canontechsupport.com

For individual attention to a special issue, try emailing our friendly technical engineers, specially trained to communicate quick, easy, and logical solutions to your inquiries within 24 hours.

3. 90-Day Toll-Free Tech Support** — (1-800-828-4040)

If you prefer, you can start your 90-day Toll-Free Technical Support option at any time during your warranty period. This option provides live telephone technical support for a period of 90 days from your first call. After that 90-day period, you can continue to call via the toll number for technical support during the balance of your warranty period, or you can extend your service and support coverage (both toll-free tech support and repair) by purchasing a cost-attractive Canon CarePAK extended service plan. For more information, please visit our Web site at www.canontechsupport.com

4. Live Tech Support** — (1-757-413-2848)

After your free 90-day option expires, and during the warranty period, speak with a technician for technical support, free of service charges, Monday-Saturday (excluding holidays). Telephone Device for the Deaf (TDD) support is available at **(1-866-251-3752)**.

5. Extended Service and Support — www.canonesp.com

Canon CarePAK Extended Service Plan is a cost-attractive and easy-to-use extended service program that provides up to three full years of service and support coverage at a very attractive price. CarePAK offers toll-free Canon technical support and includes Canon’s superb InstantExchange product replacement program. For further information about extending your Canon service and support, call 1-800-385-2155, or visit our Web site at www.canonesp.com. CarePAK must be purchased during your original warranty period.

Note: Within Canada, call for technical support 24 hours a day, 7 days a week (1-800-OK-CANON)

* Support program specifics are subject to change without notice.

** Refer to the individual product information for details.

Ordering Information

For additional supplies, use the following descriptions and order numbers.

Description	Order #
Ink Tanks	
BCI-24 Black	6881A003
BCI-24 Color	6882A003
Canon Specialty Papers	
Glossy Photo Paper (8.5" x 11"/20 sheets)	7074A005
High Resolution Paper (8.5" x 11"/100 sheets)	1033A011
Matte Photo Paper (8.5" x 11"/50 sheets)	7981A004
Photo Paper Plus Glossy (4" x 6"/20 sheets)	7980A007
Photo Paper Plus Glossy (8.5" x 11"/20 sheets)	7980A006
Photo Paper Pro Perforated (4" x 6"/20 sheets)	5699A005
Photo Paper Pro for Borderless Printing (4" x 6"/20 sheets)	1029A014
Photo Paper Pro (8.5" x 11"/15 sheets)	1029A004
Transparencies (8.5" x 11"/50 sheets)	1043A004

Call **1-800-OK-CANON** to locate a dealer near you, or visit the Canon eStore at www.estore.usa.canon.com.



©2003 Canon U.S.A., Inc. Canon is a registered trademark of Canon Inc. All other product and brand names are trademarks of their respective owners. As an ENERGY STAR® partner, Canon U.S.A., Inc., has determined that this product meets the ENERGY STAR® guidelines for energy efficiency.

Contents

Basic Printing

Turning on the Printer	2
Loading Paper	3
Using Speciality Media	5
Printing with Windows	7
Printing with Macintosh	9

Advanced Printing

Accessing Printer Driver	11
Adjusting Print Quality for Photographs	12
Using Printer Driver Options	20
Using the Bundle Software	21
Printing Borderless Photographs with Windows	22
Printing Borderless Photographs with Macintosh	24

Printing Maintenance

When Printing Becomes Faint or Colors are Incorrect	27
Printing the Nozzle Check Pattern	28
Print Head Cleaning	31
Print Head Deep Cleaning	33
Aligning the Print Head	35
Replacing an Ink Tank	39

Troubleshooting

Cannot Install the Printer Driver	45
Print Quality is Poor or Contains Errors	46
Troubleshooting Printer Hardware	48
Paper Does Not Feed Properly	49
Handling Error Messages	50
An Error Message Appears on the Screen	51

Appendix

Installing the Printer Driver when using Mac OS 9.x	53
User's Guide Table of Contents	55
Specifications	56
Safety Precautions	58
Regulatory Information	60
CANON LIMITED WARRANTY --- (USA Only)	61

Index	63
------------------------	-----------

Basic Printing



Note

This **Quick Start Guide** describes some of the features of your i475D printer and how to use them. For more information, view the i475D **User's Guide** on the **Setup Software & User's Guide CD-ROM**, or use the online help within your printer driver interface:

Windows

While in the printer's Properties window, press the **F1** key, or click ? in the upper right corner. Then click the feature you want to know more about, or click **Help** when displayed.

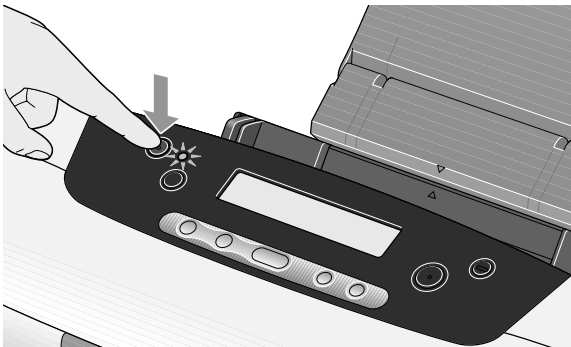
Macintosh

Turn Balloon Help on by selecting **Help**, then **Show Balloon Help**.

Turning on the Printer

- 1 Press the **POWER** button.

The **POWER** lamp flashes while the printer warms up and changes to steady (non-flashing) green when the printer is ready.



Important

- Before unplugging the power cord, turn off the printer and ensure that the green lamp has gone out.
- If the **POWER** lamp changes to orange and begins flashing, refer to the section "**Handling Error Messages**" on page 50.

Loading Paper

■ Print Media to Avoid

Do not use the following types of paper. Using such paper will not only produce unsatisfactory results, but can also cause the printer to jam or malfunction.

- Folded, curled or wrinkled paper
- Damp paper
- Paper that is too thin (less than 64 gsm or 17 lb)
- Paper that is too thick* (more than 105 gsm or 28 lb)

*non-Canon branded paper

- Picture postcards
- Postcards with an affixed photo or sticker
- Envelopes with a double flap
- Envelopes with pressure seals
- Envelopes with an embossed or treated surface
- Any type of paper with holes (such as loose-leaf)

■ Loading the Print Media

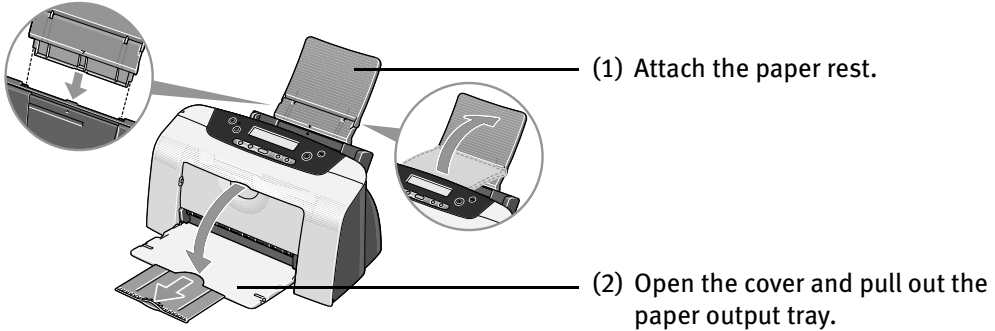
This section describes how to load plain paper into your printer.

- For detailed information on the speciality media Canon provides for use with its various printers, refer to the section "**Using Speciality Media**" on page 5.
- Consult the *User's Guide* for detailed instructions on how to load envelopes and speciality media into the printer.

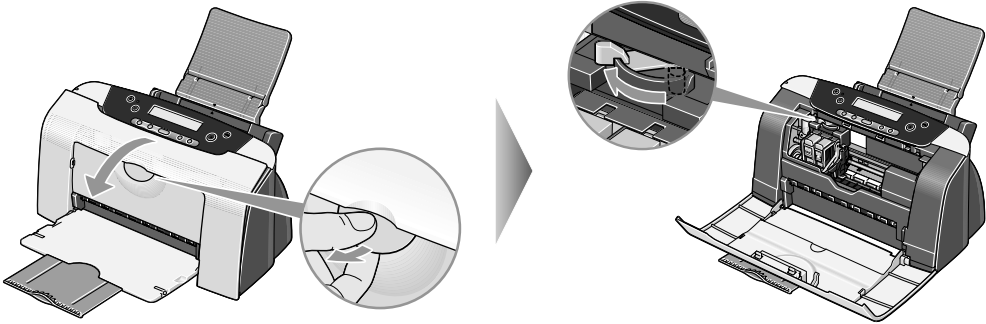
1 Flatten the four corners of the paper before loading it.

Important When paper is curled, gently bend them in the opposite direction until the paper becomes completely flat.

2 Prepare to load paper.

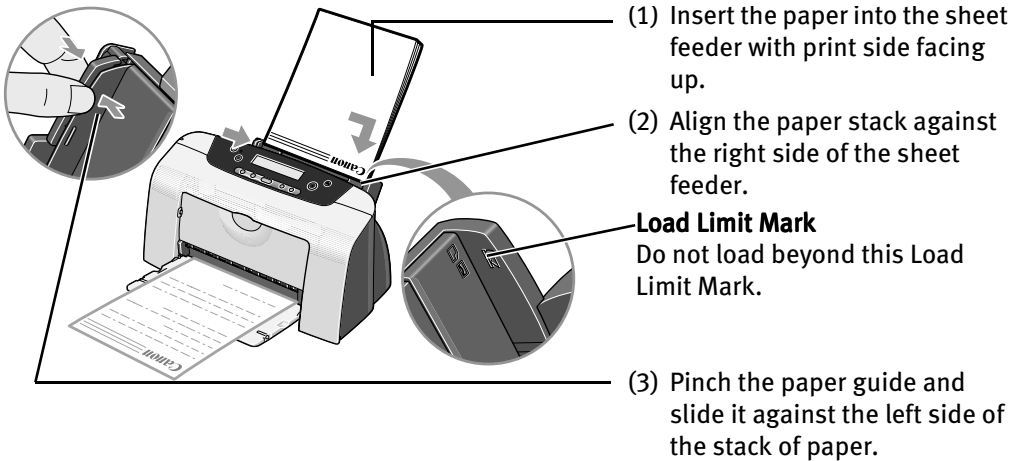



- (3) Open the front cover and adjust the paper thickness lever to the correct position for the media in use. Move to the left position for plain paper. Move to the right position for envelopes and T-shirt Transfers.



- (4) Close the front cover.

3 Load the paper.



 **Note** Do not touch the printed surface until the ink dries. For specific drying times, refer to the instructions packaged with your media.

Using Speciality Media

Canon recommends that you use genuine Canon media to ensure optimal print quality.

■ Photo Quality Media

- Photo Paper Pro
- Photo Paper Plus Glossy
- Matte Photo Paper
- Glossy Photo Paper
- High Resolution Paper



■ Media Suited to Business Documents

- High Resolution Paper
- Transparencies



■ Canon Speciality Media

Media Name	Paper Rest Load Limit	Paper Thickness Lever Position	Printer Driver Settings for Media Type
Photo Paper Pro	Letter: up to 10 sheets* 4" x 6" : up to 20 sheets	Left	Photo Paper Pro
Photo Paper Pro Perforated	4" x 6" : up to 20 sheets	Left	Photo Paper Pro**
Photo Paper Plus Glossy	Letter: up to 10 sheets* 5" x 7" : up to 10 sheets 4" x 6" : up to 20 sheets	Left	Photo Paper Plus Glossy
Matte Photo Paper	Up to 10 sheets	Left	Matte Photo Paper
Glossy Photo Paper	Up to 10 sheets	Left	Glossy Photo Paper
High Resolution Paper	Up to 80 sheets	Left	High Resolution Paper
T-Shirt Transfers	1 sheet	Right	T-Shirt Transfer
Transparencies	Up to 30 sheets	Left	Transparency




Note

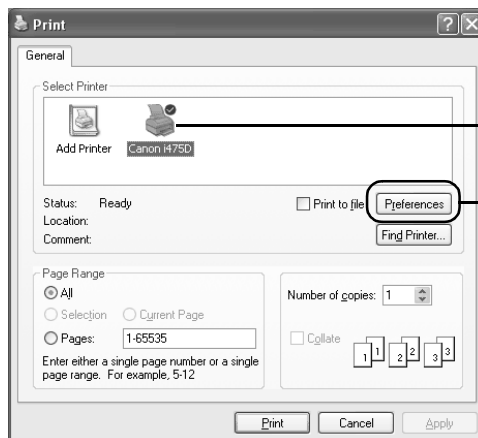
- When using plain paper, up to 100 sheets can be set. Set the Paper Thickness Lever to the left and select **Plain Paper** from the printer driver Media Type.
- For detailed description of print media types, refer to the *User's Guide*.
- * When paper cannot be fed normally, load the necessary number of sheets in the sheet feeder with them separating from each other to avoid them from sticking together.
- ** Print settings are much easier to select if you use the applications included on the *Setup Software & User's Guide CD-ROM* when printing with Photo Paper Pro Perforated.
For instructions on how to print from the software applications, refer to the *Photo Application Guide*.



Printing with Windows


-  **Note**
- The menu screens and dialog boxes that appear may vary, depending on the software application you are using.
 - The steps described in this section are for printing in Windows XP.

- 1** Create a document or open a file to print.
- 2** Open Printer Properties dialog box.
 - (1) Select **Print** from the application software's **File** menu.

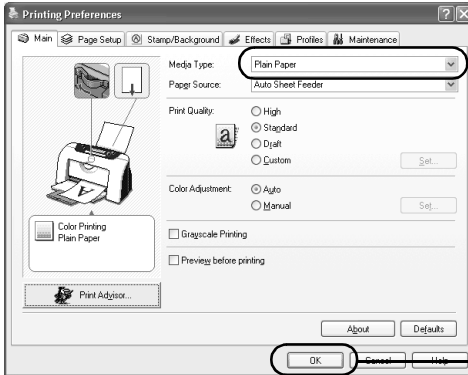


(2) Ensure that **Canon i475D** is selected.

(3) Click **Preferences** or **Properties**.

-  **Note** In Windows 2000, click the **Main** tab in the **Print** dialog box.

3 Specify the required settings.



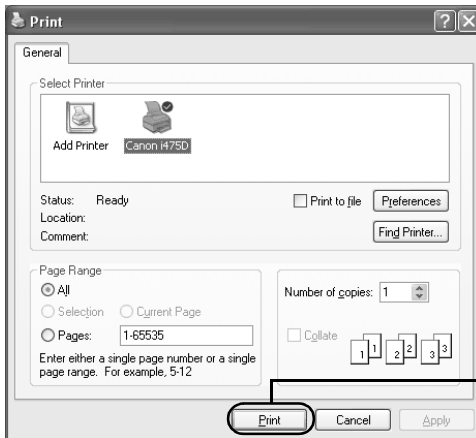
(1) Click **Media Type** to select the media loaded in the printer.

(2) Click **OK**.



- Note**
- From the **Page Setup** tab select the correct document size to be printed.
 - To adjust Print Quality settings, select **Custom** and click **Set** on the **Main** tab. You can control quality in the **Set Print Quality** dialog box.
 - For details about other printer driver functions, refer to the *User's Guide* or *Help*.
 - Select **Preview before printing** by clicking the check box. This displays a preview screen that allows you to confirm the selected printing effects and how your document will look when printed. Some applications do not contain the function to display the preview.

4 Print the document.




(1) Click **Print**.



- Note** You can cancel a print job in progress by simply pressing the **Cancel** button on the printer.

Macintosh

Printing with Macintosh

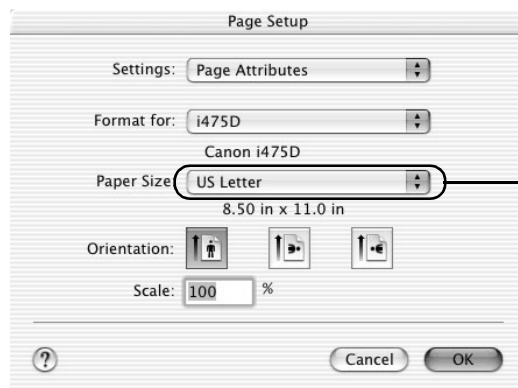
-  **Note**
- The menu screens and dialog boxes that appear may vary, depending on the software application you are using.
 - The steps described in this section are for printing in Mac OS X.

1 Create a document or open a file to print.

2 Select Paper Size.

(1) Select the **Page Setup** from the application software's **File** menu.

Page Setup dialog box opens.



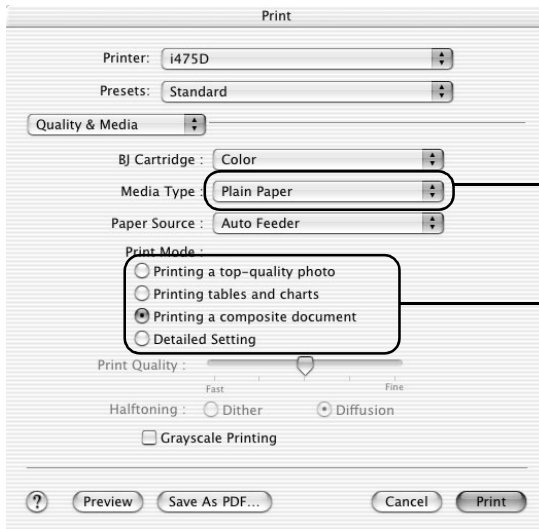
(2) Select the desired paper size from the **Paper Size** pop-up menu.

(3) Click **OK**.

3 Specify the required settings.

(1) Select **Print** from the application software's **File** menu.


(2) Select **Quality & Media** from the pop-up menu.



(3) Select the **Media Type** from the pop-up menu.

(4) Select the print mode appropriate to your document from the **Print Mode** pop-up menu.

(5) Click **Print**.

-  **Note** ● When you select the print mode appropriate to your document from the **Print Mode**, the document will be printed in color and print quality suited to the characteristics of **Media Type** you have selected.

Printing a top-quality photo: Select when printing documents consisting mainly of photographs and graphics featuring fine color gradation.

Printing tables and charts: Select when printing documents consisting mainly of graphs and graphics (illustrations) with strong color definition.

Printing a composite document: Select when printing documents consisting mainly of text.


Detailed Setting: You can fine-tune the Print Quality and Half-toning settings.
Refer to the *User's Guide*.

- For details about other printer driver functions, refer to the *User's Guide* or Help.
- You can cancel a print job in progress by simply pressing the **Cancel** button on the printer.

Advanced Printing

Accessing Printer Driver

The **Printer Properties** dialog box can be opened from either within an application, or directly from the Windows **Start** menu.

-  **Note**
- This manual refers to Windows XP operation. The operations may vary depending on your operating system.
 - Depending on your application program, the command and menu names may differ, and there may be more steps involved in opening the **Printer Properties** dialog box. For more details, see the user's manual for your application.

■ Opening the Printer Properties Dialog Box from Your Application Program

- 1** In your application, select the command to print a document.

The **Print** dialog box can usually be opened by selecting **Print** from the **File** menu.

- 2** Ensure that the Canon i475D is selected. Then click **Preferences (or Properties)**.

The **Printer Properties** dialog box opens.

■ Opening the Printer Properties Dialog Box Directly from the Start Menu

This method is used for maintenance operations such as print head cleaning, or to specify printer settings common to all application programs.

When the **Printer Properties** dialog box is opened from the **Start** menu, additional tabs appear, including the **Details** tab. These do not appear when the **Printer Properties** dialog box is opened from within an application.

For more information about these additional tabs, refer to your Windows documentation.

- 1** Click **Start** and select **Control Panel, Printers and Other Hardware**, and then **Printers and Faxes**.

For non-XP Windows users, click **Start**, select **Settings**, and then **Printers**.

- 2** Select the Canon i475D icon.

3 Open the File menu and select Printing Preferences (or Properties).

The **Printer Properties** dialog box opens.

Adjusting Print Quality for Photographs

■ Improving Printed Images

Two important factors control the quality and output of your printed images:


Paper and Ink

Using recommended Canon paper, speciality media, and inks for printing photographs can significantly improve the quality of your printouts. See the inside back cover for a list of Canon media and inks for this printer.


Printer Driver Settings

The printer driver has a variety of settings that can be used to creatively enhance the colors and output of your photographs. Many of these features are covered in this chapter.


For more detailed information, see the *i475D User's Guide* on the *Setup Software & User's Guide CD-ROM*.

 **Note** You can also access the online help in either of the following ways depending on your operating system:

Windows

- Press the **F1** key
- Click  in the upper right corner, then click the feature you want to know more about.
- Click **Help** when displayed.

Macintosh

- Click  in the **Page Setup** dialog box or the **Print** dialog box.

■ Adjusting Print Quality

Features that affect the appearance and quality of your printed images can be controlled with the printer driver.

The i475D automatically adjusts printer settings to improve print quality based on the media type (plain paper, Photo Paper Pro, and so on). You can also customize the Print Quality settings if desired.

To manually adjust Print Quality settings:

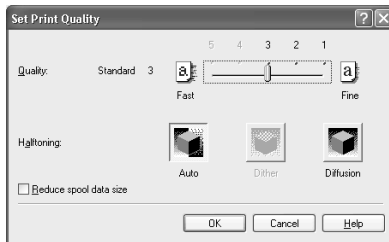
Windows

- 1 Open the Printer Properties dialog box.

See "Opening the Printer Properties Dialog Box from Your Application Program" on page 11.

- 2 Select Custom in Print Quality, then click Set... to open the Set Print Quality dialog box.

- 3 Move the slide bar to adjust the Print Quality.



- 4 When the process is complete, click OK.

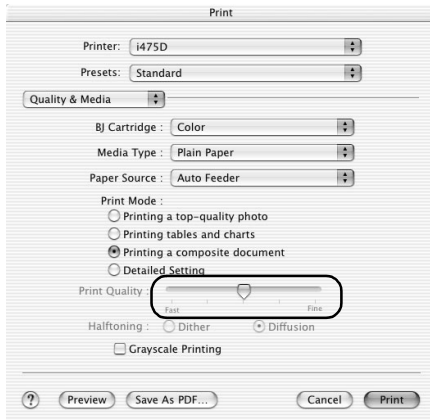
Macintosh

- 1 Open the Print dialog box.

See "Printing with Macintosh" on page 9.

- 2 Select Quality & Media from the pop-up menu, and then click Detailed Setting.

- 3 Move the slide bar to adjust the Print Quality.



4 When the process is complete, click OK.

To automatically optimize the image:

Photo Optimizer PRO automatically adjusts the photographic image created with a digital camera. Use this feature to compensate for unsatisfactory color balance and over- or under-exposure before printing.

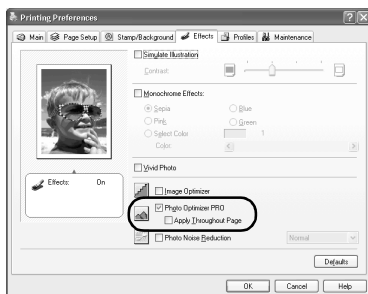
Windows

1 Open the Printer Properties dialog box.

See "Opening the Printer Properties Dialog Box from Your Application Program" on page 11.

2 Click the Effects tab.

3 Select the Photo Optimizer PRO check box.



4 Click OK.

To use Vivid Photo option:

Vivid Photo intensifies landscape like fields, trees, oceans and skies, while maintaining natural skin tones in the images.

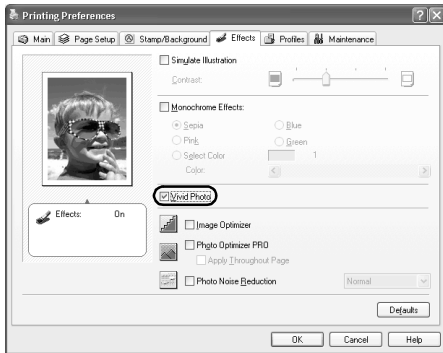


Note In Windows Me or Windows 98

If Background Printing has been disabled, the Vivid Photo function is not available.

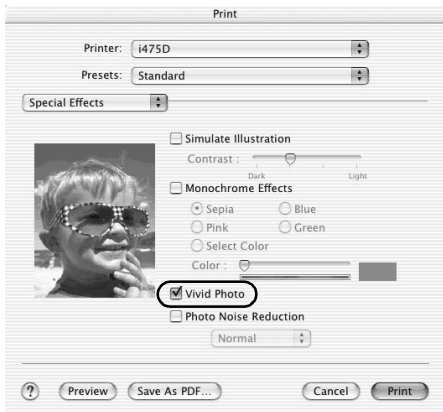
Windows

To use Vivid Photo, select the **Vivid Photo** check box on the **Effects** tab.




Macintosh

To use Vivid Photo, select the **Vivid Photo** check box under **Special Effects**.



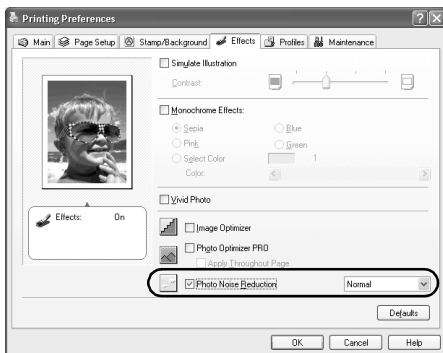
To reduce noise from images captured with a digital camera:

Photo Noise Reduction function reduces noise from blue portions, such as the sky and dark portions of the images captured with your digital camera.

 **Note** In **Windows Me** or **Windows 98**
If Background Printing has been disabled, the Photo Noise Reduction function is not available.

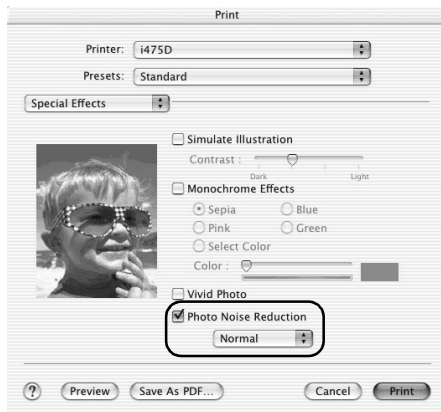
Windows

To use Photo Noise Reduction, select the **Photo Noise Reduction** check box on the **Effects** tab.



Macintosh

To use Photo Noise Reduction, select the **Photo Noise Reduction** check box under **Special Effects**.



■ Saving and Recalling Driver Settings

When you change printer driver settings for a specific print job, such as printing black and white photos, or printing documents with a special background, you can save and name these settings for future use on similar print jobs.

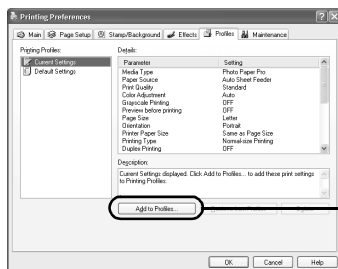
Windows

1 Open the Printer Properties dialog box.

See "Opening the Printer Properties Dialog Box from Your Application Program" on page 11.

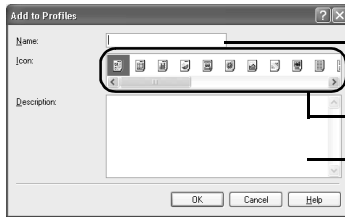
2 Click the Profiles tab.

3 Enter new settings in Profiles.



(1) Click **Add to Profiles**.

The **Add to Profiles** dialog box opens.




- (2) Enter the name of profile for registering settings.
- (3) Select an icon.
- (4) Enter a description on the registering profile.

4 Click OK.

5 Click OK on the Profiles tab.

This registers your printer driver print settings.

 **Note** You can retrieve or delete the print settings profile at any time.

Retrieving profile: Select the desired profile from **Printing Profiles**, and click **Retrieve** from **Profiles**.

Deleting unwanted profile: Select the desired profile from **Printing Profiles**, and click **Delete**.

For details, click Help and refer to the topic of this function.

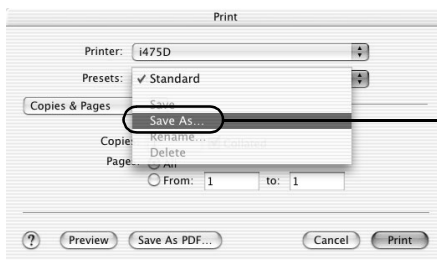
Macintosh

1 Open the Print dialog box.

See "Printing with Macintosh" on page 9

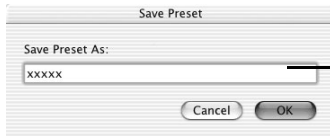
2 Select all of the necessary settings.

3 Register new printer driver settings.



- (1) Select **Save As** from the pop-up menu.


Save Preset dialog box opens.



(2) Enter a name of your printer driver settings.

4 Click OK.

This registers your printer driver settings.


 **Note** You can retrieve or change the saved driver settings at any time.

Retrieving print settings: Select the name of the print settings to retrieve from the **Presets** in the **Print** dialog box.

Changing drivers settings: When registered print settings are selected, you can delete them or change their name.

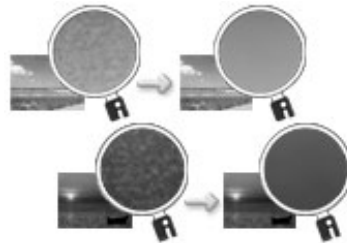
Using Printer Driver Options

Getting to know the basic features of your printer driver will provide you with sufficient expertise to print a wide range of images and documents. The illustrations below provide a basic introduction to the many features offered by your printer driver.

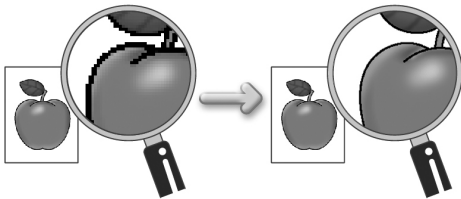
 **Note** For detailed description of the printer driver functions, refer to the *User's Guide*.



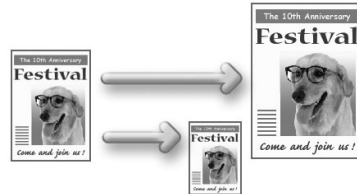
Printing with Borderless Printing



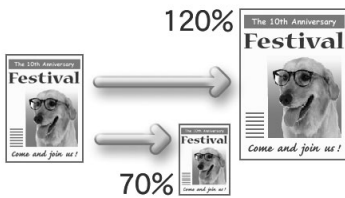
Reducing Noise from Images Recorded with Digital Camera



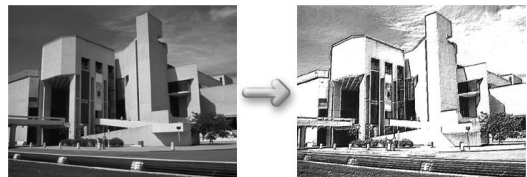
Smoothing the Rough Edges of Certain Images



Automatically Resizing the Image to Fit the Page




Resizing the Image by Selecting the Scaling Ratio



Adding Illustrated Effect to Documents

Using the Bundle Software

The *Setup Software & User's Guide CD-ROM* includes photo applications designed to edit the photographs taken by a digital camera and print them as photo-lab quality prints. Please use the application(s) suitable for your print purposes.

-  **Note**
- To install applications, refer to *Easy Setup Instructions*.
 - For details about photo applications, refer to the *Photo Application Guide* included on the *Setup Software & User's Guide CD-ROM*.

■ Easy-PhotoPrint (Windows/Macintosh)

You can make Borderless Printing easily and quickly, just by selecting a photograph taken with a digital camera and the paper type on which to print. You can also use simple editing features such as trimming and image rotation. It is Exif Print (Exif 2.2)* compatible. Internet Explorer 4.0 or later must be installed.

■ ImageBrowser (Macintosh)

You can import photographs taken with a digital camera into the computer, edit and caption them. You can produce Borderless prints or Index prints with ease. It is Exif Print (Exif 2.2)* compatible.

■ ZoomBrowser EX/PhotoRecord (Windows)

You can import photographs taken with a digital camera into the computer, edit, add a caption and print them in an album format. PhotoRecord is Exif Print (Exif 2.2)* compatible.

■ PhotoStitch (Windows/Macintosh**)

You can select multiple photographs and merge them to create a panoramic photo.

■ Easy-WebPrint (Windows)

You can easily print pages displayed on the Internet Explorer or pages from the *User's Guide* (on-screen manual of this printer) in full size. Easy-WebPrint automatically adjusts the layout when printing a screen. This feature enables you to print a screen without its right end being cut off.

This application is a plug-in for Internet Explorer, and its toolbar is automatically added to Internet Explorer after installation. Internet Explorer 5.5 or later must be installed.


* Exif Print (Exif 2.2) is a worldwide standard. Under Exif 2.2, the digital camera can record data tags for specific camera settings and functions such as whether the flash was on or off, if the camera was in portrait or night scene mode, etc.

BJ Printers support Exif Print and use a suitable photo application to read the camera data precisely, producing optimal prints. This enables you to create prints that reproduce your vision more accurately than ever before.

** Mac OS 9.x and Mac OS X (v.10.2.1 to v.10.2.4) are supported.

Printing Borderless Photographs with Windows

This chapter describes the steps used to print from photo applications included with your Setup Software and User's Guide CD-ROM using the Borderless Printing mode.

 **Note** Media Types Suitable for Borderless Printing


Media types compatible with Borderless Printing include Photo Paper Plus Glossy (LTR, 4" x 6" , 5" x 7"), Photo Paper Pro (LTR, 4" x 6"), Matte Photo Paper (LTR), and Glossy Photo Paper (LTR, 4" x 6").

Follow the steps below to create color prints of digital camera photographs with Easy-PhotoPrint using the Borderless Printing function. Easy-PhotoPrint supports Exif Print (Exif 2.2). Easy-PhotoPrint can handle only JPEG files (filename extension: .jpg and .jpeg).

1 Start Easy-PhotoPrint.

- (1) Store the photographs you took with your digital camera in the folder on the hard disk.

This section describes how to print photographs stored in the folder on the hard disk.

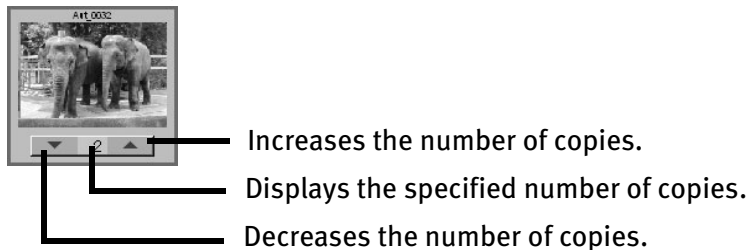
- (2) Click **Start**, select **All Programs** (or **Programs**), **Canon Utilities**, **Easy-PhotoPrint**, and then **Easy-PhotoPrint**.
The  **Image Selection** sheet is displayed.

2 Select photographs.

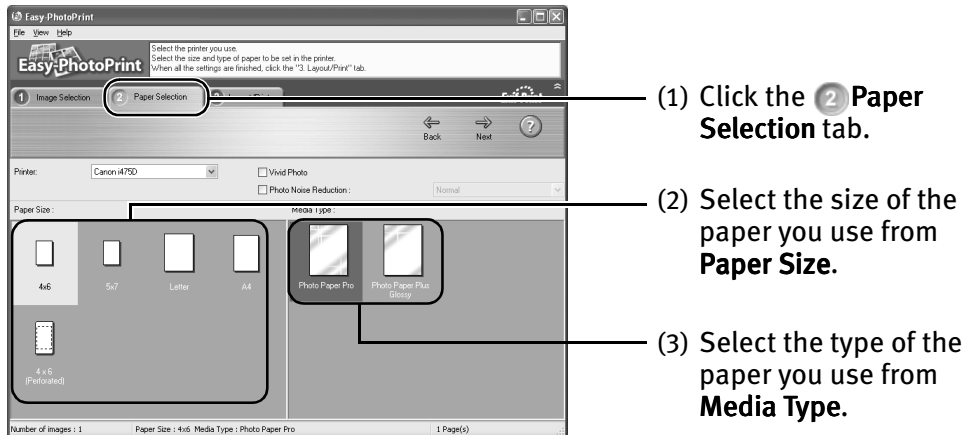
- (1) Select the folder containing the photograph you want to print.
All photographs in the selected folder are displayed.



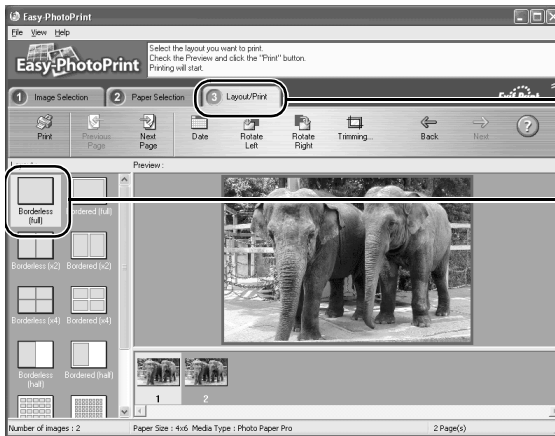
(2) Click [▲] on the thumbnail of the photograph you want to print and specify the number of copies.



3 Select the paper.



4 Select the layout.



(1) Click the **Layout/Print** tab.

(2) Select **Borderless (full)**.

(3) Load the media specified in the **Paper Selection** tab.

(4) Click **Print**.

Macintosh

Printing Borderless Photographs with Macintosh

This chapter describes the steps used to print from photo applications included with your Setup Software and User's Guide CD-ROM using the Borderless Printing mode.

Note Media Types Suitable for Borderless Printing

Media types compatible with Borderless Printing include Photo Paper Plus Glossy (LTR, 4" x 6", 5" x 7"), Photo Paper Pro (LTR, 4" x 6"), Matte Photo Paper (LTR) and Glossy Photo Paper (LTR, 4" x 6").

Follow the steps below to create color prints of digital camera photographs with Easy-PhotoPrint using the Borderless Printing function. Easy-PhotoPrint supports Exif Print (Exif 2.2). Easy-PhotoPrint can handle only JPEG files (filename extension: .jpg and .jpeg).

1 Start Easy-PhotoPrint.

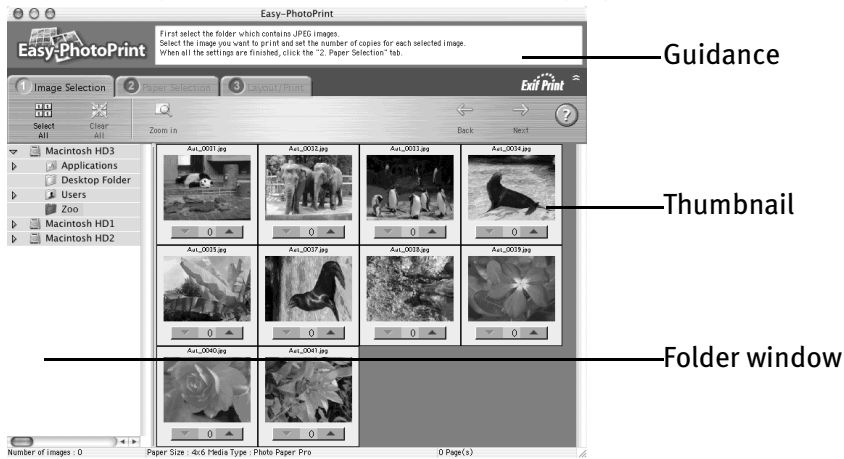
(1) Store the photographs you took with your digital camera in the folder on the hard disk.

This section describes how to print photographs stored in the folder on the hard disk.

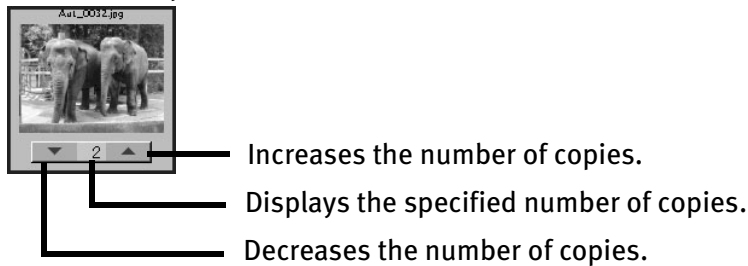
- (2) Double-click the hard disk icon, the **Applications** folder, the **Easy-PhotoPrint** folder, and then double-click the **Easy-PhotoPrint** icon.

2 Select photographs.

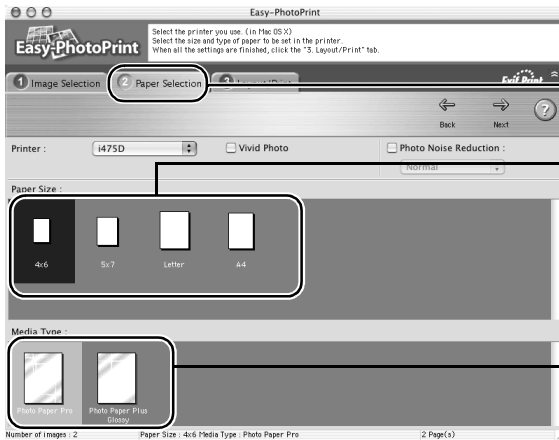
- (1) Select the folder containing the photograph you want to print. All photographs in the selected folder are displayed.



- (2) Click [▲] on the thumbnail of the photograph you want to print and specify the number of copies.



3 Select the paper.



(1) Click the **2 Paper Selection** tab.

(2) Select the size of the paper you use from **Paper Size**. The paper sizes available for Borderless Printing are; 4x6, 5x7, Letter, and A4.

(3) Select the type of the paper you use from **Media Type**.

4 Select the layout.



(1) Click the **3 Layout/Print** tab.

(2) Select **Borderless (full)**.

(3) Load the media specified in the **3 Paper Selection** tab.

(4) Click **Print**.

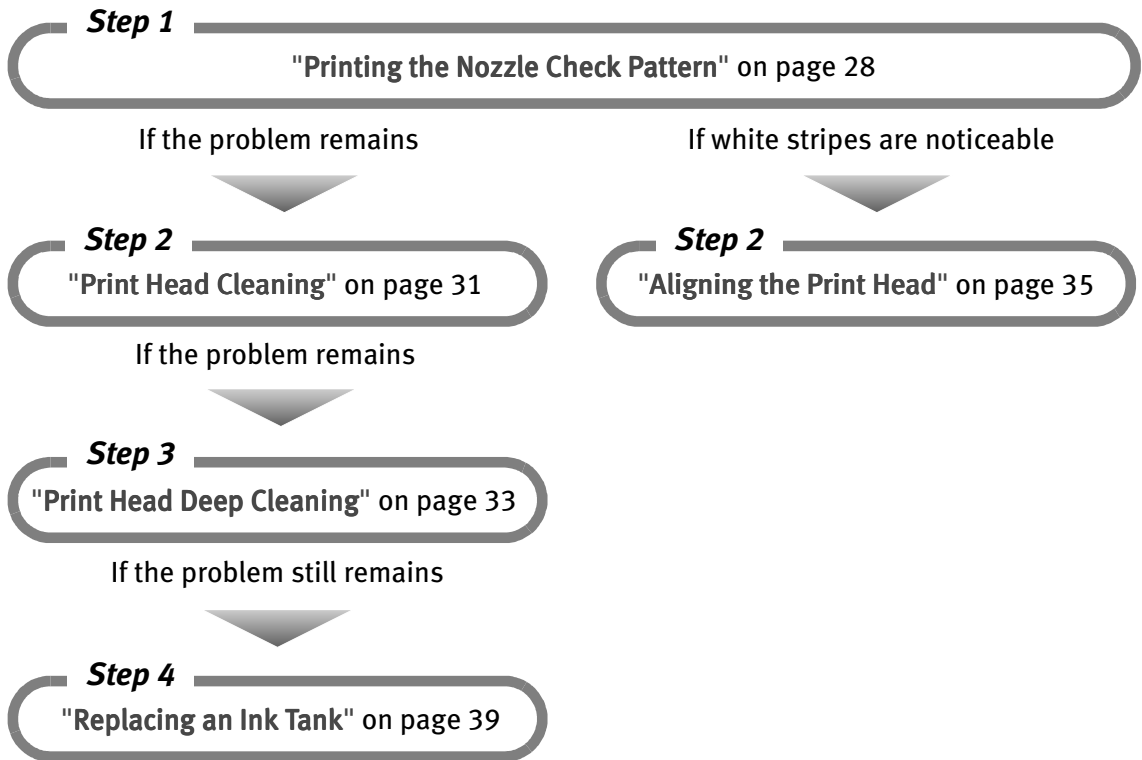
(5) When the confirmation message is displayed, click **OK**.


(6) Click **Print** in the **Print** dialog box.

Printing Maintenance

When Printing Becomes Faint or Colors are Incorrect


When printing becomes faint or colors are incorrect, even if ink remains in the ink tanks, the print head nozzles are probably clogged. Follow the procedures below to clean the nozzles.



-  **Note**
- If ink tank replacement does not resolve the problem, contact the Customer Care Center.
 - You will be alerted if low ink warning is enabled.

Printing the Nozzle Check Pattern

Print the nozzle check pattern to determine whether the ink ejects properly from the print head nozzles, and to verify print head alignment. Use this function when printed results are blurred or the color is incorrect.

 **Note** Nozzle check pattern printing can be executed also from the printer itself. With the printer on, load a sheet of A4 or Letter paper in the printer. Hold the **Resume** button until the **Power** lamp flashes twice.

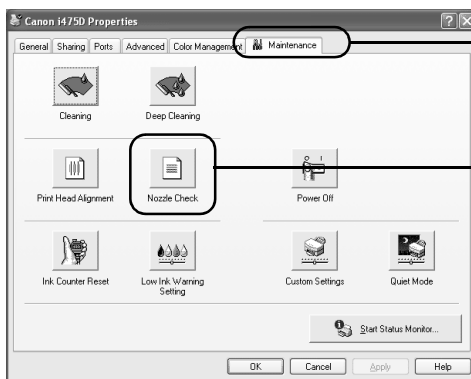
Windows

1 With the printer on, load a sheet of Letter paper in the printer.

2 Open the Printer Properties dialog box.

See "Opening the Printer Properties Dialog Box Directly from the Start Menu" on page 11.

3 Print the Nozzle Check Pattern.



(1) Click the **Maintenance** tab.

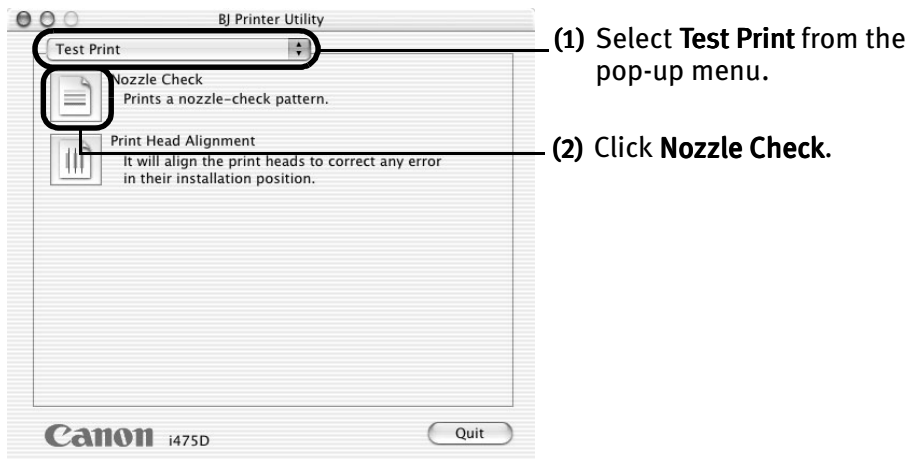
(2) Click **Nozzle Check**.

(3) When the confirmation message is displayed, click **OK**.

See "Examining the Nozzle Check Pattern" on page 30.

Macintosh

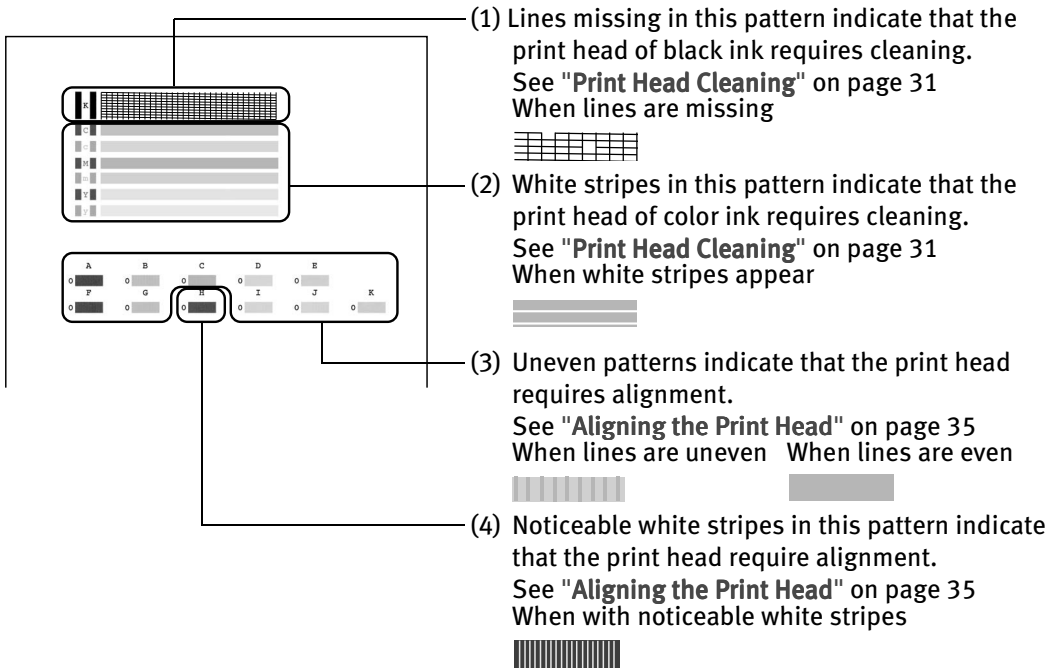
- 1 With the printer on, load a sheet of Letter paper in the printer.
- 2 Open the BJ Printer Utility dialog box.
 - (1) Double-click the hard disk icon where the printer driver was installed, the **Applications** folder, and then the **Utilities** folder.
 - (2) Double-click the **Print Center** icon.
 - (3) Select i475D from the **Name** list and click **Configure**.
 - (4) Select i475D from the **Product** list and click **Select**.
- 3 Print the Nozzle Check Pattern.



- (5) When the confirmation message is displayed, click **OK**.
See "**Examining the Nozzle Check Pattern**" on page 30.

■ Examining the Nozzle Check Pattern

The nozzle check pattern should appear as follows when ink is discharged properly. Examine the nozzle check pattern output by the printer.



Print Head Cleaning

Clean the print head if you suspect that the nozzles might be clogged. Cleaning the print head consumes ink, so perform print head cleaning only when necessary.

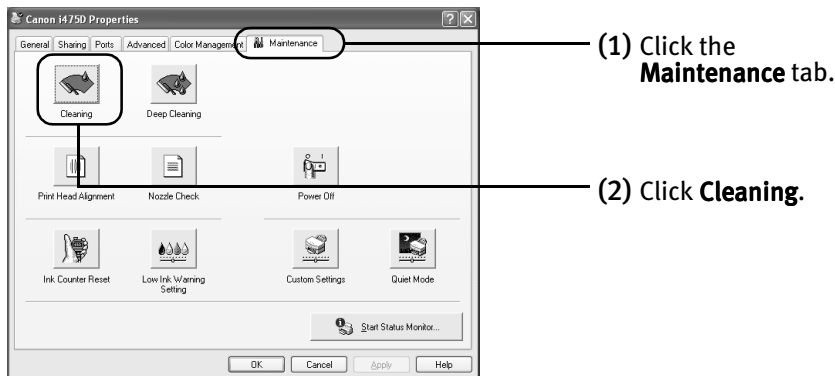
Windows

1 Ensure that the printer is turned on.

2 Open the Printer Properties dialog box.

See "Opening the Printer Properties Dialog Box Directly from the Start Menu" on page 11.

3 Start Print Head Cleaning.



(3) Select the ink nozzles to be cleaned, and then click **Execute**.

(4) When the confirmation message is displayed, click **OK**.

Macintosh

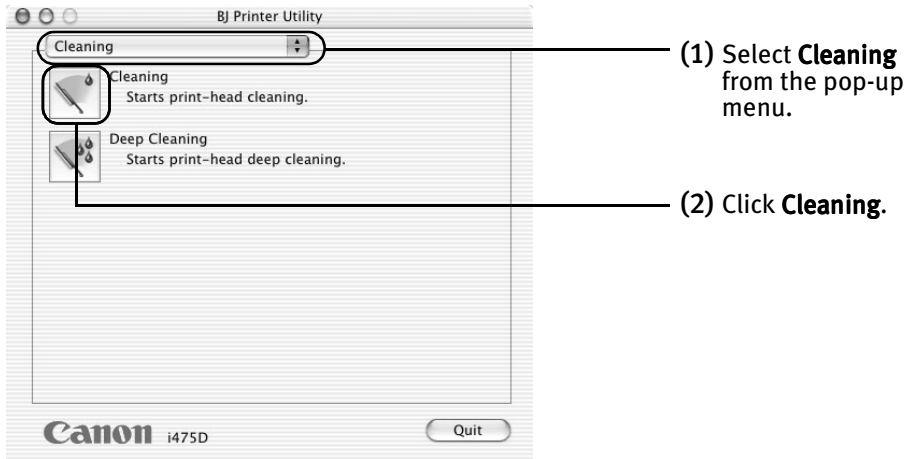
1 Ensure that the printer is turned on.

2 Open the BJ Printer Utility dialog box.

(1) Double-click the hard disk icon where the printer driver was installed, the **Applications** folder, and the **Utilities** folder.


- (2) Double-click the **Print Center** icon.
- (3) Select i475D from the **Name** list and click **Configure**.
- (4) Select i475D from the **Product** list and click **Select**.

3 Start Print Head Cleaning.



- (3) Select the ink nozzles to be cleaned, and then click **OK**.
- (4) When the confirmation message is displayed, click **OK**.

Important Do not perform any other operations until the print head cleaning finishes. This takes about 50 seconds.

-  **Note**
- Print head cleaning can also be performed from the printer itself. Ensure that the printer is turned on. Hold down the **Resume** button until the **Power** lamp flashes once.
 - After print head cleaning finishes, print the nozzle check pattern to verify that the print head nozzles are clean.
See "Printing the Nozzle Check Pattern" on page 28.
If the problem persists, perform print head deep cleaning.
See "Print Head Deep Cleaning" on page 33.

Print Head Deep Cleaning

If print quality does not improve by standard print head cleaning, try print head deep cleaning, which is a more powerful process. Print head deep cleaning consumes ink, so perform this procedure only when necessary.

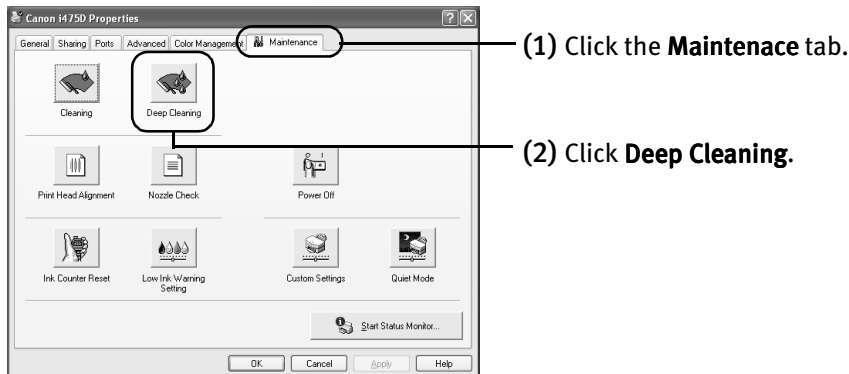
Windows

1 Ensure that the printer is turned on.

2 Open the Printer Properties dialog box.

See "Opening the Printer Properties Dialog Box Directly from the Start Menu" on page 11.

3 Start Print Head Deep Cleaning.



(3) Select the ink nozzles to be cleaned, and then click **Execute**.

(4) When the confirmation message is displayed, click **OK**.

Macintosh

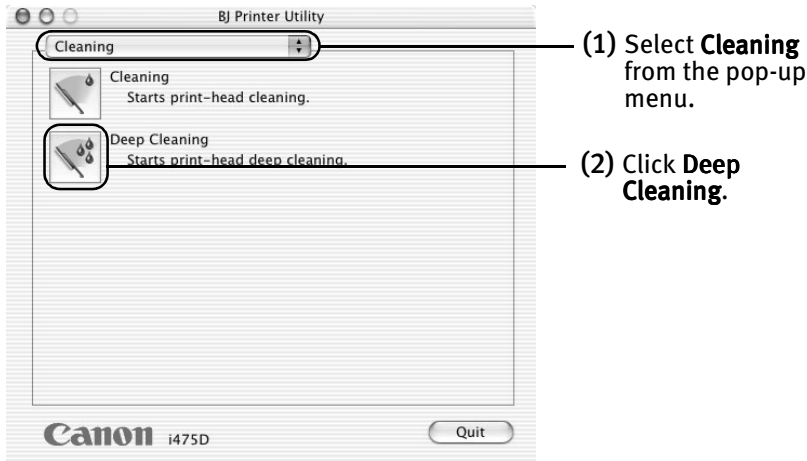
1 Ensure that the printer is turned on.

2 Open the BJ Printer Utility dialog box.

(1) Double-click the hard disk icon where the printer driver was installed, the **Applications** folder, and the **Utilities** folder.


- (2) Double-click the **Print Center** icon.
- (3) Select i475D from the **Name** list and click **Configure**.
- (4) Select i475D from the **Product** list and click **Select**.

3 Start Print Head Deep Cleaning.



- (3) Select the ink nozzles to be cleaned, and then click **OK**.
- (4) When the confirmation message is displayed, click **OK**.

Important The process takes about one minute to complete, so simply wait until the **Power** lamp stops flashing.

 **Note** After print head deep cleaning finishes, print the nozzle check pattern to verify that the print head nozzles are clean.

See "Printing the Nozzle Check Pattern" on page 28.

If the head is still not clean after the second deep cleaning, replace the ink tank.

See "Replacing an Ink Tank" on page 39.

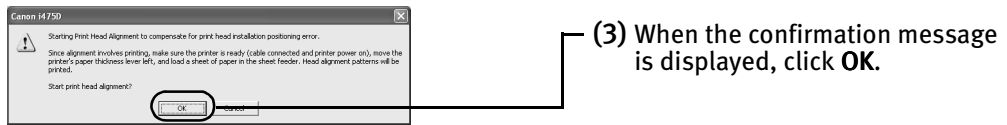
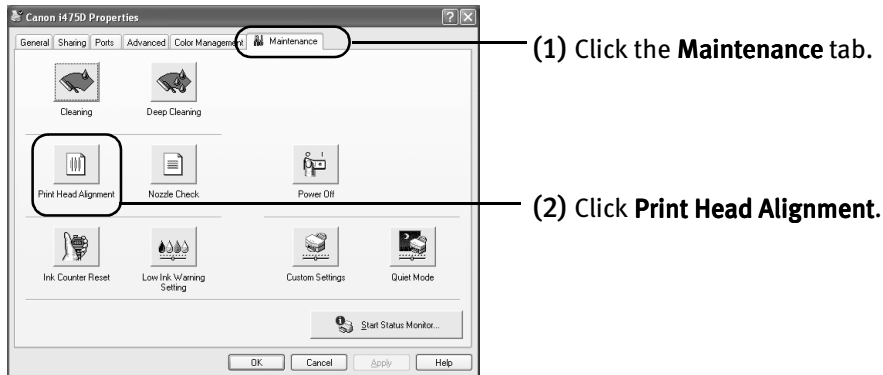
If ink tank replacement does not resolve the problem, the print head may be worn out. Contact the Customer Care Center.

Aligning the Print Head

Aligning the print head position allows you to print without shifts in the color registration.

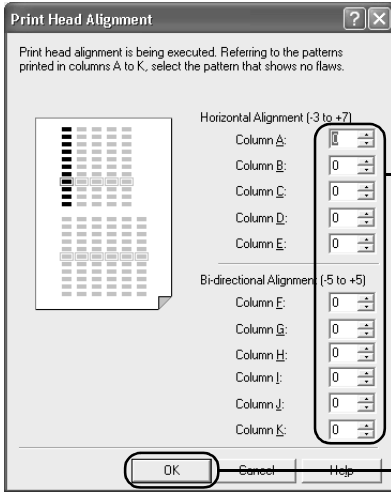
Windows

- 1 With the printer on, load a sheet of Letter paper in the printer.
Move the paper thickness lever to the left position.
- 2 Open the Printer Properties dialog box.
See "Opening the Printer Properties Dialog Box Directly from the Start Menu" on page 11.
- 3 Print the pattern.



4 Align the Print Head.

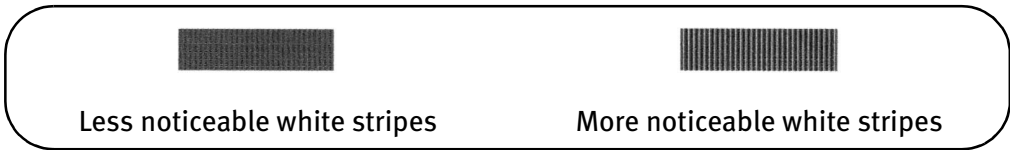
(1) Look at the print out. From the patterns, select the most even, least irregular patterns and enter the number that corresponds.



(2) Enter the numbers.

(3) Click **OK**.

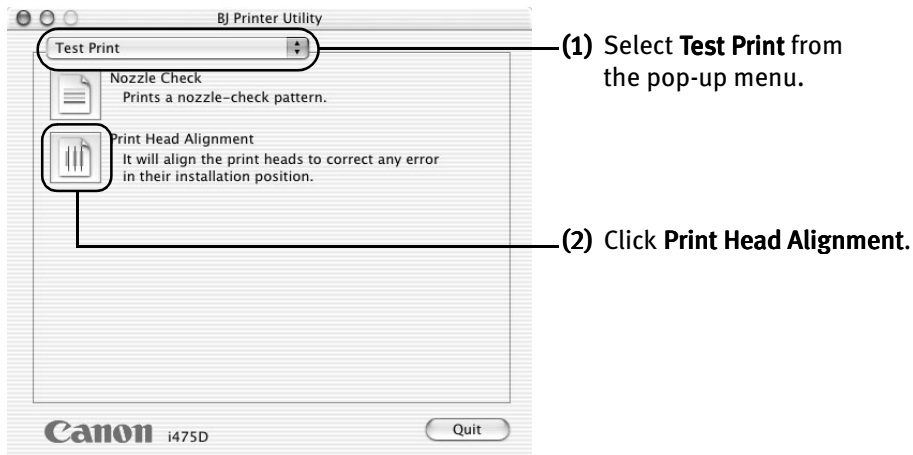
Note If it is difficult to pick up the best pattern on Column H, pick the setting that produces the least noticeable vertical white stripes.



(4) When the confirmation message is displayed, click **OK**.

Macintosh

- 1 With the printer on, load a sheet of Letter paper in the printer.
Move the paper thickness lever to the left position.
- 2 Open the BJ Printer Utility dialog box.
 - (1) Double-click the hard disk icon where the printer driver was installed, the **Applications** folder, and the **Utilities** folder.
 - (2) Double-click the **Print Center** icon.
 - (3) Select i475D from the **Name** list and click **Configure**.
 - (4) Select i475D from the **Product** list and click **Select**.
- 3 Print the pattern.



- (3) When the confirmation message is displayed, click **OK**.
- 4 Align the Print Head.

Printing Maintenance

- (1) Look at the print out. From the patterns, select the most even, least irregular patterns and enter the number that corresponds.

Print Head Alignment

Print head alignment is being executed. Referring to the patterns printed in columns A to K, select the pattern that shows no flaws.

Adjust sideways (-3~+7)

Column A: 0

Column B: 0

Column C: 0

Column D: 0

Column E: 0

Adjust both ways (-5~+5)

Column F: 0

Column G: 0

Column H: 0

Column I: 0


Column J: 0

Column K: 0

Cancel Send

(2) Enter the numbers.

(3) Click **Send**.

 **Note** If it is difficult to pick up the best pattern on Column H, pick the setting that produces the least noticeable vertical white stripes.



Replacing an Ink Tank

When replacing an ink tank, check the model number very carefully. The printer will not print properly if the wrong ink tank is used, or installed in the incorrect position.

Black: BCI-24 Black



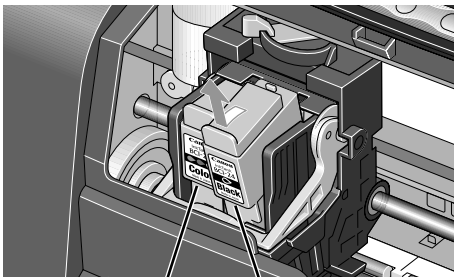
Color: BCI-24 Color



■ Replacing an Ink Tank

When an ink tank runs out of ink, replace it using the following steps.

- 1** Ensure that the printer is turned on, and then open the front cover. The print head holder moves to the left.
- 2** Remove the empty ink tank.

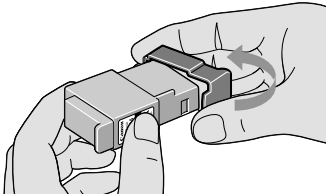


Color Black

- Important**
- Handle ink tanks carefully to avoid staining clothing or the surrounding area.
 - Discard empty ink tanks according to the local laws and regulations regarding disposal of consumables.

3 Prepare a replacement ink tank.

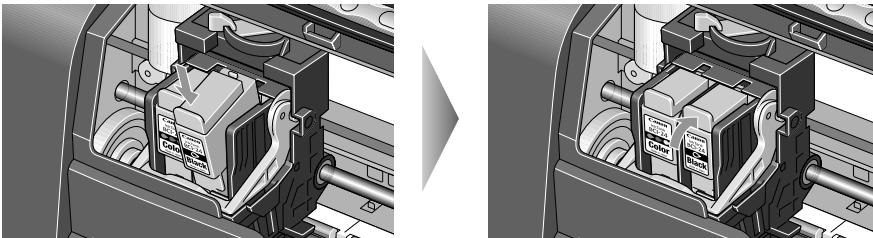
- (1) Unpack a new ink tank and remove the orange protective cap.




- Important**
- Do not re-attach the protective cap once you have removed it.
 - Once the protective cap is removed, do not touch the open ink port.

4 Insert the ink tank.

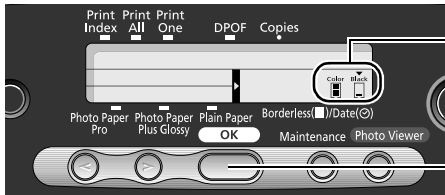
- (1) Insert a new ink tank into a slot.
- (2) Push in the tab until the ink tank snaps firmly into place.



-  **Note**
- To maintain optimal print quality, use an ink tank within six months of its first use.
 - Once an ink tank has been used, do not remove it from the printer and leave it out in the open. This will cause the ink tank to dry out and the printer may not function properly if it is reinstalled.
 - Color ink consumption may occur even when black-and-white or grayscale printing is specified.
Color ink is consumed in the head cleaning and deep cleaning, which are necessary to maintain the printer's capabilities.
 - When an ink tank runs out of ink, replace the ink tank with a new one immediately.
If printing is continued with no ink in the ink tank, a problem may occur.

5 Reset the ink counter.

Important After replacing an ink tank, be sure to reset the ink counter with the front cover open.
The remaining ink volume display on the operation panel is displayed properly only if the ink counter is reset.



(1) Using ◀ ▶ (cursor buttons), locate ▼ above the ink tank you replaced.

(2) Press the **OK** button.
A full ink tank icon appears under ▼ and the ink counter is reset.



Note If you have replaced both black and color ink tanks, press the cursor buttons and after both ink tanks have the ▼ mark set above them, press the **OK** button.

6 Close the front cover.

Note **Windows**
Message Prompting Confirmation of Ink Tank Replacement
When the front cover remains open for a certain period of time, the printer will output a message prompting you to confirm replacement of the ink tank at the start of the next print job.

1. Check the message, and click **Yes** or **OK**.

Mistakenly clicking **No** or **Cancel**, instead, will prevent the low ink warning from functioning properly. If this happens, manually reset the ink counter in Printer Properties dialog box.



2. Select the replaced ink tank, and click **OK**.

When both black and color ink tanks have been replaced, select both **Black** and **Color**.

If you have not replaced the ink tank with a new one, click **Cancel**.



Resetting the Ink Counter in Printer Properties dialog box:

Windows

1. Open the **Printer Properties** dialog box and click the **Maintenance** tab.
2. Click **Ink Counter Reset**.
3. Select the newly installed ink tank, then click **OK**.

Macintosh

1. Double-click the **Application** folder in your hard disk, the **Utilities** folder, and then the **Print Center** icon.
2. Select i475D from the **Name** list and click **Configure**.
3. Select i475D from the **Product** list and click **Select**.
4. Select **Ink Level Information** from the pop-up menu.
5. Click **Ink Counter Reset**.
6. Select the newly installed ink tank, then click **OK**.

■ How Low Ink Warning Setting Works

The low ink warning notifies you of low ink levels during printing. The Low Ink Warning has been preset to be automatically displayed.

When you reset the ink counter, it will assume that the ink tank is full regardless of how much ink actually remains. The reset is the only way to match the counter value with an actual ink volume. Reset the ink counter when installing a new ink tank.

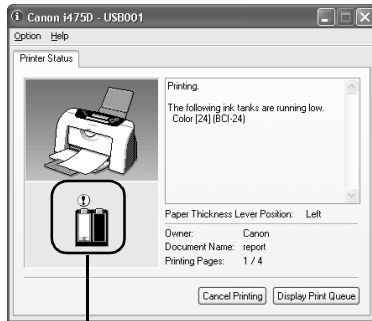
Low Ink Warning Display

The '!' shows a low ink level in the ink tank.

BJ Status Monitor (Windows)

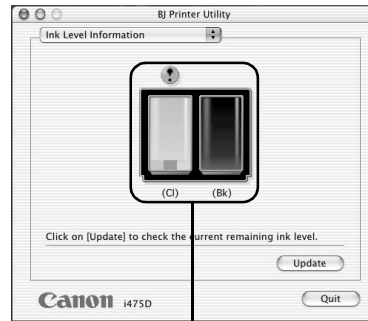
BJ Printer Utility (Macintosh)

Windows



The color ink becomes low.

Macintosh



The color ink becomes low.

How to Display Low Ink Warning Correctly

- Reset the ink counter every time you install a new ink tank.

The ink counter cannot work correctly unless you synchronize it with the actual ink level. The ink counter can only be adjusted when it is reset at the time a new ink tank is installed.

- Do not reset the ink counter of an ink tank in use.

Synchronization of the counter and the actual ink level will not work properly.

Important If you did not reset the counter when you installed the current ink tanks, the low ink warning may not function correctly, until the next time you replace the ink tanks. Also, be sure to treat both counters separately. Refer to "Low Ink Warning Accompanied by Ink Tank Icon With '?'" on page 52.

Troubleshooting

Troubleshooting usually falls into one of the following categories. In this chapter you will find the most common printing problems. Refer to the User's Guide for additional information on topics not covered in this section.

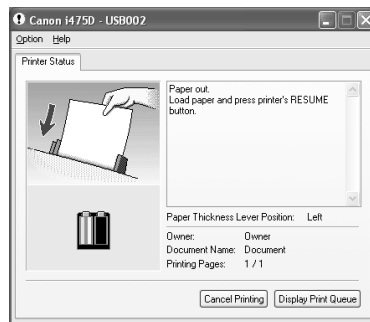
- "Cannot Install the Printer Driver" on page 45
- "Print Quality is Poor or Contains Errors" on page 46
- "Troubleshooting Printer Hardware" on page 48
- "Paper Does Not Feed Properly" on page 49
- "Handling Error Messages" on page 50
- "An Error Message Appears on the Screen" on page 51

Windows

When an Error Occurs


The BJ Status Monitor opens and displays a message. Take the appropriate action described in the message.

The message may vary depending on your operating system.





- In Windows Me or Windows 98, click the **Guide** tab and follow the on-screen instructions.

Cannot Install the Printer Driver



Problem	Possible Cause	Try This
Cannot Install the Printer Driver	Installation procedure not followed correctly	Follow the <i>Easy Setup Instructions</i> for proper printer driver installation. If the installer was forced to terminate due to an error, remove the CD-ROM from the CD-ROM drive and restart your computer. Reinstall the printer driver. If this problem persists, contact the Customer Care Center.
	Other applications running in the background	Other applications opened on your computer can interfere with the installation routine. Close all open software applications before reinstalling the printer driver. Refer to the <i>Easy Setup Instructions</i> for installing the printer driver.
	Installation does not start automatically when the CD-ROM is inserted into the drive	<p>Windows If printer driver installation did not start automatically when you inserted the CD-ROM into the CD-ROM drive:</p> <ol style="list-style-type: none"> 1. Click Start and select My Computer. 2. Double-click the CD-ROM icon. <p>For non-XP Windows users, open the My Computer window, and then double-click the CD-ROM icon.</p> <p>Macintosh Double-click the CD-ROM icon on your desktop to start installation.</p>
	Installation CD-ROM not working properly	<p>Ensure that there are no problems with the Setup Software & User's Guide CD-ROM.</p> <p>Windows Use Windows Explorer to ensure that the CD-ROM can be read.</p> <p>Macintosh Ensure that the CD-ROM icon is displayed on the desktop. If there is any problem with the CD-ROM, contact the Customer Care Center.</p>
Unable to proceed beyond the Printer Port Screen		<p>Windows</p>  <p>Reinstall the printer driver</p> <ol style="list-style-type: none"> 1. Click Cancel. 2. When the Terminate Installation screen is displayed, click OK. 3. Click Exit, then remove the CD-ROM. 4. Turn the printer off. 5. Restart the computer. 6. Carefully follow the procedures described in the <i>Easy Setup Instructions</i> and reinstall the driver.

Print Quality is Poor or Contains Errors

Problem	Possible Cause	Try This
Ink does not eject properly/Printing is Blurred/ Colors are Wrong / White Streaks appear / Printed Ruled Lines are Displaced	Ink tank is not seated properly	Check that the ink tanks are firmly seated in the print head and reseal them if necessary.
	Print head nozzles clogged	Print the nozzle check pattern to check for uneven ink output. See " Printing the Nozzle Check Pattern " on page 28. When a specific color is missing from the nozzle check pattern, clean the print head. If ink supply is uneven: See " Print Head Cleaning " on page 31.
	Print head nozzles clogged or misaligned	Print the nozzle check pattern to check for uneven ink output. When a specific color is missing from the nozzle check pattern, clean the print head. <ul style="list-style-type: none"> • If ink supply is uneven: See "Print Head Cleaning" on page 31 • If straight lines are misaligned: See "Aligning the Print Head" on page 35 <p> Note The ink tank may be clogged with dust or air if the protective cap is replaced after the removal.</p>
	Media not loaded with the print-side up	Check that your paper is loaded with the correct print side facing up. <p> Note Follow the instructions packaged with your speciality media for loading and handling.</p>
	Incorrect paper type	<p>Windows On the Main tab, ensure that the Media Type selected matches the media loaded.</p> <p>Macintosh In the Print dialog box, select Quality & Media from the pop-up menu, and then ensure that the Media Type selected matches the media loaded.</p>
Print Quality not set properly	Be sure to set the Print Quality setting to High for Windows or Fine for Macintosh. <p>Windows On the Main tab, click High for the Print Quality setting.</p> <p>Macintosh 1. In the Print dialog box, select Quality & Media from the pop-up menu, and then click Detailed Setting. 2. Drag the Print Quality slide bar to the Fine end.</p>	
Printed Paper Curls or Ink Blots	Paper being used is too thin	Use High Resolution Paper or Photo Paper Pro to print images that require a lot of ink (i.e. pictures with intense colors or photographs).
	Color Intensity setting is too high	Reduce the Intensity setting in the printer driver and try printing again. <p>Windows 1. Open the Printer Properties dialog box. 2. On the Main tab, select Manual for Color Adjustment, and then click Set. 3. Drag the Intensity slide bar to adjust the intensity.</p> <p>Macintosh 1. In the Print dialog box, select Color Option from the pop-up menu. 2. Drag the Intensity slide bar to set the intensity.</p>
	Paper feed roller is dirty	Clean the paper feed roller. See " Paper Does Not Feed Properly " on page 49.

Problem	Possible Cause	Try This
Printed Surface is Scratched	Inappropriate paper type used	<p>Check to see if the paper you are printing on is too thick or curled. See "Print Media to Avoid" on page 3.</p> <p>Note that smudging may occur at the top and bottom edges of the paper when using Borderless Printing. Ensure that the paper you are using is compatible with Borderless Printing.</p> <p>Windows See "Media Types Suitable for Borderless Printing" on page 22</p> <p>Macintosh See "Media Types Suitable for Borderless Printing" on page 24</p>

Troubleshooting Printer Hardware

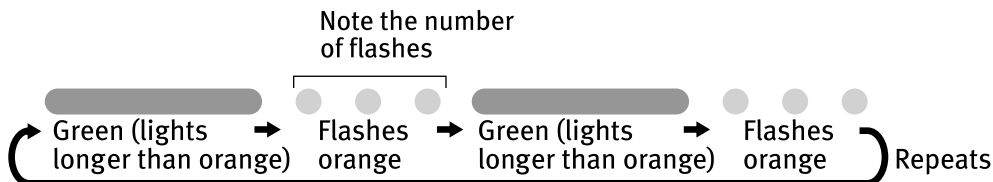
Problem	Possible Cause	Try This
Printer Does Not Start or Printer Stops During Print Jobs	Print head has overheated due to long periods of continuous printing	<p>Stop printing and turn the printer off for at least 15 minutes to allow the print head to cool down.</p> <p>The print head tends to overheat when printing continuously for long periods of time. The print head is designed to automatically pause at line breaks before resuming printing in order to cool down.</p> <p>Caution The area around the print head can become extremely hot during extended print operation. Always avoid touching the print head and its peripheral components.</p>
	Printing high-resolution photographs and graphics	<p>Wait until the print job finishes.</p> <p>The POWER lamp flashes green while the print data is being processed. Printing photographs and high-density graphics can take time.</p>
	Printer cable is too long	<p>Avoid using USB cables longer than 16.4 feet.</p>
	There may be problems in your operating system	<p>Restart your computer. It may solve the problem.</p> <p>Delete an undesired print job if there is any. Use BJ Status Monitor in Windows or BJ Print Monitor in Macintosh for the deletion.</p> <p>Windows</p> <ol style="list-style-type: none"> 1. Open the Printer Properties dialog box. <p>See "Opening the Printer Properties Dialog Box Directly from the Start Menu" on page 11.</p> <ol style="list-style-type: none"> 2. Click Maintenance tab and then click Start Status Monitor. 3. Click Display Print Queue. 4. Select Cancel All Documents in the Printer menu. When the confirmation message is displayed, click Yes. The print job is deleted. <p> Note In Windows Me or Windows 98 Click to select an undesired document and select Purge Print Documents in the Printer menu.</p> <p>Macintosh</p> <ol style="list-style-type: none"> 1. Select Applications from the Go menu. 2. Double-click the Print Center icon in the Utilities folder. 3. Double-click i475D displayed under Name in the Printer List. 4. Click to select an undesired document and click . The print job is deleted.
Cannot Print to End of Job	Incorrect page size selected	<p>Ensure that the page size setting matches the size of the paper loaded in the printer:</p> <ul style="list-style-type: none"> - Check the Paper Size setting from within your application to ensure that it matches the size of the paper loaded. - Check the Page Setup tab in the Printer Properties dialog box (for Windows) or the Page Setup dialog box (for Macintosh) to ensure that it matches the size of the paper loaded.
	Not enough free space on hard disk	<p>Your operating system may be out of free disk space. Check the available space on your computer's hard disk.</p>


Paper Does Not Feed Properly

Problem	Possible Cause	Try This
Paper Does Not Feed Properly	Inappropriate paper type used	Check to see if the paper you are printing on is too thick or curled. See " Print Media to Avoid " on page 3.
	Paper feed roller is dirty	<p>Follow the steps described below to clean the paper feed rollers. If envelopes or post cards do not feed properly, even after correcting any paper curl, clean the paper feed roller.</p> <ol style="list-style-type: none"> 1. Ensure that the printer is turned on and there is no paper loaded in the printer. 2. Hold the Resume button down and release after the Power lamp flashes three times. The paper roller rotates as it cleans. Repeat this cleaning operation three times. 3. Load a sheet of Letter plain paper in the printer. 4. Hold the Resume button down and release after the Power lamp flashes three times, then feed the sheet of paper. Repeat this operation three times. <p>If the printer still does not feed the envelopes or the post cards properly through the printer, even after the cleaning operation, repeat the procedure.</p>
	Paper Jams	<ol style="list-style-type: none"> 1. Gently pull the jammed paper out of the sheet feeder slot or the paper output slot, whichever is easier. <ul style="list-style-type: none"> • If the paper tears and some of it is left in the printer, turn the printer off, then open the front cover and remove the piece of paper. Do not touch internal parts in the printer. If you cannot reach or remove the torn paper, do not attempt to disassemble the printer yourself. Contact the Customer Care Center. • If you cannot extract the paper, turn the printer off, and then turn it back on. The remaining paper will be ejected automatically. 2. Close the front cover and reload the paper into the sheet feeder, then press the Resume button on the printer.




Handling Error Messages

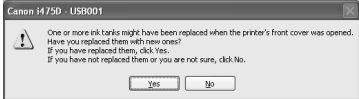

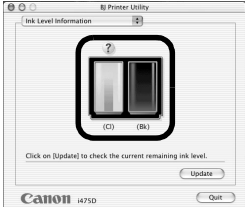

When a printer error occurs, the Power lamp flashes. The number of flashes indicates the type of error that has occurred. Count the flashes and take the appropriate action to correct the error.



Number of Flashes	Possible Cause	Try This
Two flashes	Printer is out of paper	Reload paper and press the Resume button.
Three flashes	Paper jam	If a paper jam occurs, clear the jammed paper, reload paper in the printer, then press the Resume button. See " Paper Jams " on page 49.
Six flashes	Print head not installed	Install print head.
Seven flashes	Defective print head	Press the Power button to turn off the printer, and press the Power button again to turn on the printer. If the same error occurs, the print head may be defective. Contact the Customer Care Center.
Eight flashes	Waste ink tank almost full	The printer has a built-in waste ink tank to hold the ink consumed during print head cleaning. Eight flashes indicates that this tank is nearly full. Press the Resume button to clear the error so printing can continue. Contact the Customer Care Center.
Nine flashes	Paper thickness lever is set to the right	To print from the memory card, set the paper thickness lever to the left (the setting for plain paper).
Eleven flashes	A specified period of time has lapsed without receiving a response from the digital camera / The digital camera or digital video camcorder connected is not compatible with this printer	Disconnect the camera cable, press the printer's Resume button and reconnect the cable. If the error is still unresolved, there is a possibility that you are using a digital camera or digital video camcorder that is not supported by this printer. Use digital cameras or video camcorders that are compatible with this printer.
 Note	Power lamp flashes alternately green and orange	An error that requires contacting the Customer Care Center may have occurred. Disconnect the printer cable from the printer, and then turn the printer off and unplug the printer from the power supply. Reconnect the printer cable, and then plug the printer back in and turn the printer back on after leaving it about 10 minutes. If the problem remains, contact the Customer Care Center.

An Error Message Appears on the Screen

Problem	Possible Cause	Try This
Windows Error Writing / Output to USBxxx	Printer not ready	The Power lamp will flash green when the printer is warming up or when a print job is being sent to the printer. It will glow a steady (non-flashing) green when it is ready for use or when the print job is completed.
	Paper is not loaded	Load paper and press the Resume button.
	Faulty connection	Ensure that the printer cable is securely connected to the computer.  Note If you are using switching hub or other device, disconnect the printer and reconnect it directly to the computer and try printing again. If successful, the problem may have been with the device. There could also be a problem with the cable(s). Replace the cable(s) and try printing again.
	Printer port error	Verify the printer port status. Double-click Universal Serial Bus (USB) controllers on the Device Manager dialog box, then double-click Canon i475D to see the status. Refer to the User's Guide for instructions on how to verify the status.
	Printer port settings and printer interface do not match	Ensure that the destination Printer Port is set to USB PRNnn (Canon i475D) or USBnn (Canon i475D) (Where nn represents a number). If the settings are not correct, follow the procedures described in the <i>Easy Setup Instructions</i> and reinstall the printer driver. Refer to the <i>User's Guide</i> for instructions on how to verify status and the correct action to take.
	Printer driver is not installed properly	Uninstall then reinstall the printer driver. <ol style="list-style-type: none"> 1. Click Start, and select All Programs (or Programs), Canon i475D, and Uninstall. 2. Follow the on-screen instructions to uninstall driver. 3. Follow the procedures described in the <i>Easy Setup Instructions</i> and reinstall the printer driver.
Macintosh "Error No.: X300"	Printer not ready	If the Power lamp is off, turn the printer on. If the Power lamp is flashing green, the printer is initializing. Wait until the Power lamp stops flashing.
	Printer not properly connected	Ensure that the printer is securely connected to the computer.  Note If you are using switching hub or other device, disconnect the printer and reconnect it directly to the computer and try printing again. If successful, the problem may have been with the device. There could also be a problem with the cable(s). Replace the cable(s) and try printing again.
	Your printer name is not displayed in the Printer List of Print Center .	<ol style="list-style-type: none"> 1. Select Applications from the Go menu. 2. Double-click the Print Center icon in the Utilities folder. 3. Ensure that i475D is displayed in the Printer List. If i475D is not displayed in the Printer List, reinstall the printer driver.  Note If the problem persists, delete all unnecessary documents from the Extensions and Control Panels folder.

Problem	Possible Cause	Try This
<p>Windows Have you replaced an ink tank with a new one? message is displayed</p>	<p>If the ink tank has been replaced with a new one</p>	 <p>Click Yes or OK to reset the ink counter. See "Reset the ink counter." on page 41.</p>
<p>Low Ink Warning Accompanied by Ink Tank Icon With '?'</p>	<p>Failure to reset ink counter when installing new ink tank</p>	<p>Click No or Cancel on the dialog box described above. You can choose the option to disable the display of this confirmation message.</p> <ol style="list-style-type: none"> 1. Ensure that the printer is turned on and open the Printer Properties dialog box. 2. Click the Maintenance tab and then click Low Ink Warning Setting. 3. Clear a check box of Display a confirmation message of Ink tank replacement and click Send. <p>The ink tank level accompanied by the ink tank icon with the "?" indicates ink tank is not synchronized with its ink counter.</p>   <p>Always be sure to reset the ink counter in your printer driver when you replace ink tank. See "Reset the ink counter." on page 41.</p> <p>Windows</p> <p> Note A "?" is displayed next to the Ink counter between the time one ink tank is removed and the ink counter is reset when the next one is installed. Display of the "?" can be disabled by unchecking the Display low Ink Warning check box.</p> <ol style="list-style-type: none"> 1. Ensure that the printer is turned on and open the Printer Properties dialog box. 2. Click the Maintenance tab and then click Low Ink Warning Setting icon. 3. Clear a check box of Display low ink warning off and click Send.

Appendix

Installing the Printer Driver when using Mac OS 9.x

When using other than Mac OS X (Mac OS 8.6 to 9.x), install the printer driver following the procedure below.

Screen shots may differ depending on the operating system used.

- 1** Turn on your Mac and insert the *Setup Software & User's Guide CD-ROM*.
TURN THE PRINTER ON.
- 2** Open the Mac OS 8.6-9.x folder on the CD-ROM, then double-click the Printer Driver folder.
- 3** Double-click the Installer icon in the Printer Driver folder.
- 4** Read the License Agreement and click Accept, if you agree.
- 5** Click Install.
The printer driver will load automatically.
- 6** If the message “No other applications can be running...” is displayed, click Continue.
- 7** When the “Installation was successful” screen displays, click Restart.
- 8** Open the Mac OS 8.6-9.x folder on the CD-ROM, then double-click the Memory Card Utility folder.
- 9** Double-click the BJ Utility.mpkg icon.
Follow the on-screen instructions.
- 10** If prompted, restart your computer.
- 11** Open the Mac OS 8.6-9.x folder on the CD-ROM, then double-click the Application folder.
- 12** Double-click on the software to be installed.
Follow the on-screen instructions.
- 13** When the “Installation has Finished” screen appears, click OK.
- 14** When prompted, restart your computer.

15 Select the Apple menu, then Chooser.

16 Click the i475D icon in the Chooser.

17 Close the Chooser.



Note Register your product at www.registercanon.com to ensure product support.

18 To ensure highest quality output, carry out print head alignment.

Refer to the *Mac OS 9 Printer Driver Guide* for instructions or how to align the print head.

User's Guide Table of Contents

Your printer's User's Guide offers detailed information on the following topics.

How to Use This Manual

- How to Read This Manual

Printer Parts and Their Function

- Front View
- Operation Panel
- Rear View
- Inside the Printer

Useful Printing Techniques

- Printing with Borderless Printing
- Reducing Noise from Images Captured with Digital Camera
- Achieving Vivid Reproduction of Images with Lots of Greens and Blues
- Printing with Color and Brightness Automatically Optimized (Windows)
- Adjusting Print Quality
- Smoothing the Rough Edges of Certain Images (Windows)
- Automatically Resizing the Image to Fit the Page (Windows)
- Resizing the Image by Selecting the Scaling Ratio
- Printing Multiple Pages on a Single Page
- Enlarging a Document by Printing it on Multiple Pages (Windows)
- Printing Multiple Pages for Assembly into a Booklet (Windows)
- Printing on Both Sides of the Page (Windows)
- Printing Stamped Messages on Documents (Windows)
- Printing Background Images on Documents (Windows)
- Adding Illustrated Effect to Documents
- Printing Entire Image in Single Color
- Printing in Grayscale
- Reversing the Page Printing Order
- Printing on Nonstandard Size Paper
- Reducing the Sound of Printer Operation
- Registering Printer Driver Settings

Printing Media

- Compatible Media Types

- Photo Paper Pro PR-101
- Photo Paper Pro PC-101S
- Photo Paper Plus Glossy PP-101
- Matte Photo Paper MP-101
- Glossy Photo Paper GP- 401
- High Resolution Paper HR-101N
- T-Shirt Transfers TR-101
- Transparencies CF-102
- Envelopes

Checking the Status of the Printer

- BJ Status Monitor Functions (Windows)
- Print Center (Macintosh)

Troubleshooting

- Cannot Install Printer Driver
- Print Quality is Poor
- Printer Does Not Start or Stops During Print Jobs
- Paper Does Not Feed Properly or Paper Jams
- The **Power** Lamp Flashes Orange
- An Error Message is Display on the Screen
- An Error Message is Displayed on the Operation Panel
- Cannot Print Properly from the Digital Camera
- An Error Message is Displayed While Using the Photo Viewer
- Problems Unique to Windows (Windows)
- Problems Unique to the Macintosh (Macintosh)

Appendix

- Printing Area
- Using the Memory Card Utility (Windows)
- Using the BJ Utility (Macintosh)
- Uninstalling Drivers
- Uninstalling the User's Guide (Windows)
- Transporting printer
- Printer Driver Functions (Windows)
- Printer Driver Functions (Macintosh)
- BJ Printer Utility

Index

Specifications

Printer

Printing resolution:	4800 X 1200 dpi. max. (Ink droplets can be placed in a pitch of 1/4800 inch at minimum.)
Print speed *	Black printing Max Speed (Custom Setting 5): 18 ppm Standard: 11.8 ppm Color printing Max Speed (Custom Setting 5): 12 ppm Standard: 4.9 ppm
*Print speed may vary with the content of the document and the processing speed of the host computer.	
Print width:	203.2 mm max. (8.0 in) (for Borderless Printing: 216 mm / 8.5 in)
Resident print control mode:	Canon extended mode
Receive buffer:	56 KB
Interface:	USB/Direct Print Port
Acoustic noise level:	Approx. 45 dB (A) (in the highest print quality mode)
Operating environment:	Temperature: 5 to 35°C (41 to 95°F) Humidity: 10 to 90%RH (no condensation)
Storage environment:	Temperature: 0 to 40°C (32 to 104°F) Humidity: 5 to 95% RH (no condensation)
Power supply:	AC 100-127 V, 50/60 Hz AC 220-240 V, 50/60 Hz
Power consumption:	Standby: Approx. 3 W Printing: Approx. 16 W
Dimensions (with the paper rest and paper output tray retracted):	15.47 (W) X 10.16 (D) X 8.58 (H) in
Weight:	Approx. 4.0 kg (8.82 lb.)
Print Head:	Black: 320 nozzles (600 dpi) Cyan, Magenta, Yellow: 256 nozzles per each color (600 dpi)
Ink Tanks:	Capacity (pages): Black (BCI-24 Black) approx. 300 ^{*1} , approx. 580 ^{*2} Color (BCI-24 Color) approx. 160 ^{*2} ^{*1} 1500 characters per page, normal text, at standard and plain paper mode with Windows XP printer driver ^{*2} Based on printing the ISO JIS-SCID No.5 pattern at standard and plain paper mode with Windows XP printer driver
Supported recording media:	Compact flash card, Smart Media, SD card, Multimedia card, Microdrive (Other memory cards can be used through the adapter which is compatible with the above.)

Printer

Supported recording formats:

JPEG (DCF/CIFF/Exif2.2 or earlier/JFIF), TIFF (Exif compliant), DPOF compliant

“Bubble Jet Direct” Print

Compatible Paper

Card #1 (Photo Paper Pro 4” x 6” /101.6 x 152.4 mm), Card #2 (Photo Paper Plus Glossy 4” x 6” /101.6 x 152.4 mm), Card #3 (Photo Paper Plus Glossy 5” x 7” /127.0 x 177.8 mm), LTR (Photo Paper Pro or Photo Paper Plus Glossy Letter), A4 (Photo Paper Pro or Photo Paper Plus Glossy A4)

Layout Print

Standard: Borderless / with border, Index Print: 15-35 images

Print Quality

1 level

Effect

Exif Print Compatible

DPOF Functions

Ver. 1.00 compatible (Index print, number of copies, select images, print special characters (date/image no.))

BJ Printer Driver Systems Requirements

Windows

- Use a computer equipped on which Windows XP, Windows 2000, Windows Me, Windows 98 can operate.
- USB interface
- Available hard-disk space for printer driver installation (including temporary files)
Windows XP/Windows 2000: 75MB
Windows Me/Windows 98: 40MB
(including the capacity for the electric manual)

USB operation can only be guaranteed on a PC with pre-installed Windows XP, Windows 2000, Windows Me, or Windows 98. (This includes Windows XP, Windows 2000, or Windows Me upgraded from pre-installed Windows 98 or later)

Macintosh

- Use a Macintosh series computer equipped with USB interface on which Mac OS X v.10.2.1 to v.10.2.4 or Mac OS 8.6-9.x can operate.
- Available hard-disk space for printer driver installation
Mac OS X v.10.2.1 to v.10.2.4: 110 MB
Mac OS 8.6-9.x: 40 MB
- The following functions are not supported when using Mac OS X v.10.2.1 to v.10.2.4:
 - Duplex Printing
 - Photo Optimizer PRO

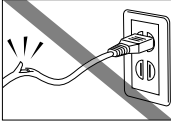
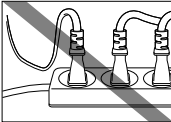
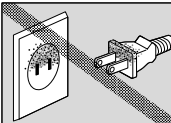

Additional Systems Requirements for Electric Manual

- Pentium® 75 MHz equivalent or higher processor (Pentium® 133MHz equivalent or higher processor recommended)
- 2x or higher CD-ROM drive (4x or higher recommended)
- Microsoft Internet Explorer 5.0 or later

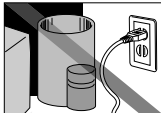
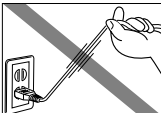

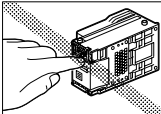
⚠ Safety Precautions

Please read the safety warnings and cautions provided in this manual to ensure that you use your printer safely. Do not attempt to use printer in any way not described in this manual.

Warning You may cause an electric shock/fire or damage the printer if you ignore any of these safety precautions.

<p>Choosing a location</p>	<p>Do not place the printer close to flammable solvents such as alcohol or thinners.</p>
<p>Power supply</p>	<p>Never attempt to plug in or unplug the printer from the power supply when your hands are wet.</p> <p>Always push the plug all the way into the power outlet.</p> <p>Never damage, modify, stretch or excessively bend or twist the power cord. Do not place heavy objects on the power cord.</p>  <p>Never plug the printer into a power socket that is shared with other equipment (extension lead/cord, 2- or 3- way adapter, etc.).</p>  <p>Never use the printer if the power cord is bundled or knotted.</p> <p>If you detect smoke, unusual smells or strange noises around the printer, immediately unplug the printer at the power supply and call for service.</p> <p>Periodically, unplug the printer and use a dry cloth to wipe off any dust or dirt collected on the plug and the power outlet. If the printer is placed at a location exposed to a lot of dust, smoke, or high humidity, the dust collected on the plug absorbs moisture and may cause insulation failure and fire.</p> 
<p>Cleaning the printer</p>	<p>Use a damp cloth to clean the printer. Never use flammable solvents such as alcohol, benzene or thinners.</p> <p>If flammable solvents come in contact with electrical components inside the printer, it could cause a fire or electric shock.</p>  <p>Always unplug the printer from the power outlet before cleaning the printer.</p> <p>If you accidentally switch the printer on while cleaning it, you could injure yourself or damage the printer.</p>
<p>Maintaining the printer</p>	<p>Do not attempt to disassemble or modify the printer. There are no user serviceable parts inside the printer.</p> <p>The printer contains high-voltage components. Never attempt any maintenance procedure not described in this guide.</p>
<p>Working around the printer</p>	<p>Do not use flammable sprays near the printer.</p> <p>This could cause a fire or electric shock if the spray comes into contact with electrical components inside the printer.</p>

Caution You may cause injury or damage the printer if you ignore any of these safety precautions.

Choosing a location	Do not install the printer in a location that is unstable or subject to excessive vibration.	
	Do not install the printer in locations that are very humid or dusty, in direct sunlight, outdoors, or close to a heating source. To avoid the risk of fire or electric shocks, install the printer in a location with an ambient temperature range of 5°C to 35°C (41°F to 95°F) and humidity of 10% to 90% (condensation free).	
	Do not place the printer on a thick rug or carpet.	
	When moving the printer, carry the printer at both ends.	
Power supply	Ensure that the area around the power outlet is kept clear at all times so you can easily unplug the power cord if necessary.	
	Never remove the plug by pulling on the cord.	
	Do not use an extension lead/ cord.	
	Never use a power supply source other than the one rated for the printer in the country where you purchased the printer. AC 100-127 V, 50/60 Hz AC 220-240 V, 50/60 Hz	
Working around the printer	Never put your hands or fingers in the printer while it is printing.	
	Do not place metal objects (paper clips, staples, etc.) or containers of flammable solvents (alcohol, thinners, etc.) on top of the printer.	
	If any foreign object (metal or liquid) fall into the printer, unplug the power cord and call for service.	
Print heads and ink tanks	For safety reasons store print heads and ink tanks out of the reach of small children. If a child ingests any ink, consult a doctor immediately.	
	Do not shake print head or ink tanks. Ink may leak out and stain clothing or the surrounding area.	
	Never touch the electrical contacts on a print head after printing. The metal parts may be very hot and could cause burns.	

Regulatory Information

Color Printer Model: K10223 (i475D)

This device complies with Part 15 of the FCC Rules. Operation is subject to the following two conditions: (1) This device may not cause harmful interference, and (2) this device must accept any interference received, including interference that may cause undesired operation.

Note: This equipment has been tested and found to comply with the limits for a Class B digital device, pursuant to Part 15 of the FCC Rules. These limits are designed to provide reasonable protection against harmful interference in a residential installation. This equipment generates, uses and can radiate radio frequency energy and, if not installed and used in accordance with the instructions, may cause harmful interference to radio communications. However, there is no guarantee that interference will not occur in a particular installation. If this equipment does cause harmful interference to radio or television reception, which can be determined by turning the equipment off and on, the user is encouraged to try to correct the interference by one or more of the following measures:

- Reorient or relocate the receiving antenna.
- Increase the separation between the equipment and receiver.
- Connect the equipment into an outlet on a circuit different from that to which the receiver is connected.
- Consult the dealer or an experienced radio/TV technician for help.

Use of a shielded cable is required to comply with Class B limits in Subpart B of Part 15 of the FCC Rules.

Do not make any changes or modifications to the equipment unless otherwise specified in the manual. If such changes or modifications should be made, you could be required to stop operation of the equipment.

Canon U.S.A., Inc.
One Canon Plaza
Lake Success, NY 11042
1-516-328-5600

Canadian Radio Interference Regulations

This digital apparatus does not exceed Class B limits for radio noise emissions from a digital apparatus as set out in the interference-causing equipment standard entitled “Digital Apparatus”, ICES-003 of the Industry Canada.

Cet appareil numérique respecte les limites de bruits radio électriques applicables aux appareils numériques de Classe B prescrites dans la norme sur le matériel brouilleur: “Appareils Numériques”, NMB-003 édictée par l’Industrie Canada.

CANON LIMITED WARRANTY --- (USA Only)

The limited warranty set forth below is given by Canon U.S.A., Inc. ("Canon USA") with respect to the new or refurbished Canon-brand printer or scanner (each a "Product") packaged with this limited warranty, when purchased and used in the United States only.

The Product is warranted against defects in materials and workmanship under normal use and service (a) for a period of one (1) year from the date of original purchase when delivered to you in new condition in its original container or (b) for 90 days from the date of original purchase for refurbished Products. Defective parts or a defective Product returned to a Canon USA repair facility or a Canon USA Authorized Service Facility ("ASF"), and proven to be defective upon inspection, will be repaired, exchanged for new or comparable rebuilt parts, or exchanged for a refurbished Product, as determined by the Canon USA repair facility or the ASF. Warranty repair or replacement shall not extend the original warranty period of the Product. This warranty does not cover any accessories, or any consumables, such as paper or ink cartridges, as to which there shall be no warranty or replacement.

This limited warranty shall only apply if the Product is used in conjunction with compatible computer equipment and software. Canon shall have no responsibility for such items except for compatible Canon brand peripheral equipment covered by a separate warranty ("Separate Warranty"). Repairs of such Canon brand peripheral equipment shall be governed by the terms of the Separate Warranty. **Non-Canon brand equipment and software that may be distributed with the Product are sold "as is" and without warranty of any kind by Canon USA, including any implied warranty regarding merchantability or fitness for a particular purpose, and all such warranties are disclaimed. The sole warranty, if any, with respect to such non-Canon brand items is given by the manufacturer or producer thereof.**

This limited warranty covers all defects encountered in normal use of the Product and does not apply in the following cases:

- (a) Loss of or damage to the Product due to abuse, neglect, mishandling, improper packaging by you, alteration, accident, electrical current fluctuations, improper use, failure to follow operating or maintenance instructions, or environmental conditions prescribed in Canon USA's user's manual or other documentation, or services performed by someone other than a Canon USA repair facility or its ASF. Without limiting the foregoing, dropping the Product, scratches, and abrasions will be presumed to have resulted from misuse, abuse or failure to operate the Product as set forth in the operating instructions.
- (b) Use of parts or supplies (other than those sold by Canon USA) that cause damage to the Product or cause abnormally frequent service calls or service problems.
- (c) If the Product has had its serial number or dating defaced, altered or removed.

ANY SYSTEM SOFTWARE (WHETHER FACTORY LOADED ON THE PRODUCT OR CONTAINED ON THE SOFTWARE DISKETTES OR CD-ROM'S ENCLOSED WITH, OR ACCOMPANYING, THE PRODUCT), AND ANY UTILITY SOFTWARE, DISTRIBUTED WITH OR FOR THE PRODUCT, IS SOLD "AS IS" AND WITHOUT WARRANTY BY CANON. THE SOLE WARRANTY WITH RESPECT TO SUCH SOFTWARE IS CONTAINED IN THE SOFTWARE MANUFACTURER'S LICENSE AGREEMENT DISTRIBUTED THEREWITH, INCLUDING ANY LIMITATIONS AND DISCLAIMERS THEREON. PLEASE CONTACT CANON IMMEDIATELY IF YOU HAVE NOT RECEIVED A COPY OF THE SOFTWARE MANUFACTURER'S LICENSE AGREEMENT.

NO IMPLIED WARRANTY, INCLUDING ANY IMPLIED WARRANTY OF MERCHANTABILITY OR FITNESS FOR A PARTICULAR PURPOSE, APPLIES TO THE PRODUCT AFTER THE APPLICABLE PERIOD OF THE EXPRESS LIMITED WARRANTY STATED ABOVE, AND NO OTHER EXPRESS WARRANTY OR GUARANTY, EXCEPT AS MENTIONED ABOVE, GIVEN BY ANY PERSON OR ENTITY WITH RESPECT TO THE PRODUCT SHALL BIND CANON USA, OR ITS ASF. (SOME STATES DO NOT ALLOW LIMITATIONS ON HOW LONG AN IMPLIED WARRANTY LASTS, SO THE ABOVE LIMITATION MAY NOT APPLY TO YOU.) CANON USA SHALL NOT BE LIABLE FOR LOSS OF REVENUES OR PROFITS, INCONVENIENCE, EXPENSE FOR SUBSTITUTE EQUIPMENT OR SERVICE, STORAGE CHARGES, LOSS OR CORRUPTION OF DATA, OR ANY OTHER SPECIAL, INCIDENTAL OR CONSEQUENTIAL DAMAGES CAUSED BY THE USE, MISUSE, OR INABILITY TO USE THE PRODUCT REGARDLESS OF THE LEGAL THEORY ON WHICH THE CLAIM IS BASED, AND EVEN IF CANON USA OR ITS ASF HAS BEEN ADVISED OF THE POSSIBILITY OF SUCH DAMAGES. NOR SHALL RECOVERY OF ANY KIND AGAINST CANON USA OR ITS ASF BE GREATER IN AMOUNT THAN THE PURCHASE PRICE OF THE PRODUCT CAUSING THE ALLEGED DAMAGE. WITHOUT LIMITING THE FOREGOING, YOU ASSUME ALL RISK AND LIABILITY FOR LOSS, DAMAGE OR INJURY TO YOU AND YOUR PROPERTY AND TO OTHERS AND THEIR PROPERTY ARISING OUT OF THE POSSESSION, USE, MISUSE, OR INABILITY TO USE THE PRODUCT SOLD BY CANON USA NOT CAUSED SOLELY AND DIRECTLY BY THE NEGLIGENCE OF CANON USA, OR ITS ASF. (SOME STATES DO NOT ALLOW THE EXCLUSION OR LIMITATION OF INCIDENTAL OR CONSEQUENTIAL DAMAGES, SO THE ABOVE EXCLUSION OR LIMITATION MAY NOT APPLY TO YOU.) THIS LIMITED WARRANTY SHALL NOT EXTEND TO ANYONE OTHER THAN THE ORIGINAL PURCHASER OF THE PRODUCT OR THE PERSON FOR WHOM IT WAS PURCHASED AS A GIFT, AND STATES YOUR EXCLUSIVE REMEDY.

Appendix

Canon offers a full range of customer technical support* options:

- For interactive troubleshooting, e-mail technical support, the latest driver downloads and answers to frequently asked questions (www.canontechsupport.com)
- Free live technical support Monday—Saturday (excluding holidays) for products still under warranty (1-757-413-2848)
- TDD (Telephone Device for the Deaf) (1-866-251-3752)

If the problem cannot be corrected by using one of the above technical support options, repair options are available at the time of your call to the Free live technical support number above or via the website at www.canontechsupport.com

This limited warranty gives you specific legal rights, and you may also have other rights, which vary from state to state.

* Support program specifics are subject to change without notice.

Canon U.S.A., Inc.
One Canon Plaza
Lake Success, NY 11042
USA

Canon is a registered trademark of Canon Inc.

Index

A

Adjusting Paper Thickness Lever	4
Adjusting Print Quality	12
Advanced Printing	11
Aligning the Print Head	35
An Error Message Appears on the Screen	51

B

Balloon Help	2
BCI-24 Black	39
BCI-24 Color	39
BJ Print Monitor	48
BJ Printer Driver Systems Requirements	57
BJ Printer Utility dialog box	29
BJ Status Monitor	44, 48
Borderless (full)	24, 26
Borderless Printing	20, 21, 22, 24, 47
Bubble Jet Direct Print	57

C

Cancel button	8, 10
Cancelling Print Jobs	8
CANON LIMITED WARRANTY - (USA Only)	61
Cleaning	31, 32

D

Deep Cleaning	33, 34
Driver	
saving setting	17
settings	8, 10
uninstalling	51

E

Easy-PhotoPrint	21, 22, 24
Easy-WebPrint	21
Examining the Nozzle Check Pattern	30
Exif 2.2	21
Exif Print	21

G

Glossy Photo Paper	6
--------------------------	---

H

Handling Error Messages	50
Help	2
High Resolution Paper	6

I

ImageBrowser	21
Ink Counter Reset	42
Ink Tank	39
Installing the Printer Driver when using Mac OS 9.x	53

L

Load Limit Mark	4
Loading Paper	3
Low Ink Warning	42
Low Ink Warning Setting	52

M

Matte Photo Paper	6
Media Type	6, 8, 10
Media Types Suitable for Borderless Printing	22, 24

N

Nozzle Check	28, 29
Nozzle Check Pattern	
examining	30
printing	28

O

Opening the Printer Properties Dialog Box Directly from the Start Menu	11
Opening the Printer Properties Dialog Box from Your Application Program	11

P

Page Setup	9, 48
Page Setup dialog box	48
Paper feed roller	49
Paper Jams	49
Paper Rest Load Limit	6
Paper Size	9
Paper thickness lever	4
Paper Thickness Lever Position	6
Photo Noise Reduction	16
Photo Optimizer PRO	14
Photo Paper Plus Glossy	6
Photo Paper Pro	6
Photo Paper Pro Perforated	6
PhotoRecord	21
PhotoStitch	21
POWER button	2
POWER lamp	2
Power lamp	50

Index

Print dialog box	7, 9
Print Head Alignment	35, 37
Print Head Cleaning	31
Print Head Deep Cleaning	33
print head holder	39
Print Media to Avoid	3
Print Mode	10
Print Quality	8, 10, 12, 46
Printer Driver Settings for Media Type	6
Printer Properties dialog box	7, 11, 28, 46
Printing Borderless Photographs	22, 24
Printing the Nozzle Check Pattern	28

R

Recalling Driver Settings	17
Regulatory Information	60
Replacing an Ink Tank	27, 39
Resetting the Ink Counter	41

S

Safety Precautions	58
Saving Driver Setting	17
Speciality Media	6
Specifications	56

T

Technical support	62
Transparencies	6
Troubleshooting	44
T-Shirt Transfers	6
Turning on the Printer	2

U

Uninstalling the printer driver	51
Using Speciality Media	5

V

Vivid Photo	15
-------------------	----

W

Warranty	61
When Printing Becomes Faint or Colors are Incorrect ...	27

Z

ZoomBrowser EX	21
----------------------	----

Quick Start Guide

Canon U.S.A., Inc.

One Canon Plaza, Lake Success, NY 11042, U.S.A.

Canon Inc.

30-2, Shimomaruko 3-chome, Ohta-ku, Tokyo 146-8501, Japan

Canon Canada, Inc.

6390 Dixie Road, Mississauga, Ontario, L5T 1P7, Canada

Canon Latin America, Inc.

703 Waterford Way, Suite 400, Miami, FL 33126, U.S.A.

Canon Mexicana S. de R.L. de C.V.

Periferico Sur No. 4124 Col. Ex-Rancho de Anzaldo, C.P. 01900, Mexico, D.F.

Ink Tank Compatibility



BCI-24 Black



BCI-24 Color