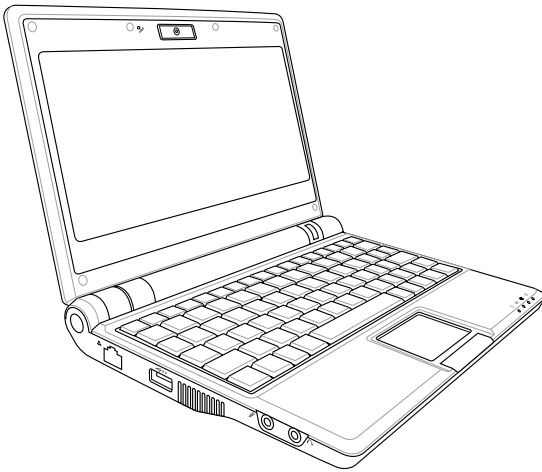




Eee PC User's Manual

Windows® XP Edition

Eee PC 900 Series



May 2008

Table of Contents

Chapter 1: Introducing the Eee PC

About This User's Manual	1-2
Notes for This Manual	1-2
Safety Precautions	1-3
Transportation Precautions	1-4
Charging Your Batteries.....	1-4
Airplane Precautions	1-4
Preparing your Eee PC.....	1-5

Chapter 2: Knowing the Parts

Top Side	2-2
Bottom Side.....	2-5
Right Side.....	2-7
Left Side.....	2-8
Rear Side.....	2-9

Chapter 3: Getting Started

Power System	3-2
Using AC Power.....	3-2
Using Battery Power	3-3
Battery Care.....	3-4
Touchpad Usage.....	3-6
Single-finger gesture input.....	3-6
Multi-finger gesture input.....	3-7
Keyboard Usage.....	3-8
Special Function Keys	3-8
First-time Startup	3-11
Desktop.....	3-14
ASUS EeePC Tray Utility.....	3-15
Enabling and Disabling Devices.....	3-15
Adjusting the display resolution.....	3-16
Shutdown.....	3-17

Chapter 4: Using the Eee PC

Network Connection.....	4-2
Configuring a wireless network connection.....	4-2

Table of Contents

Configuring a network connection.....	4-4
Browsing web pages.....	4-10
ASUS Update.....	4-11
Updating the BIOS through the Internet.....	4-11
Updating the BIOS through a BIOS file.....	4-13
Outlook Express.....	4-14
Skype™.....	4-15
Microsoft® Works.....	4-16
Initializing Microsoft® Works.....	4-16
Using Microsoft® Works.....	4-17
StarSuite 8.....	4-20
Initializing StarSuite 8.....	4-20
StarSuite Impress.....	4-23
StarSuite Writer.....	4-26
StarSuite Calc.....	4-26
StarSuite Draw.....	4-26
StarSuite Database.....	4-26
InterVideo DVD XPack.....	4-28
Launching InterVideo DVD XPack.....	4-28
Using InterVideo DVD XPack.....	4-29

Chapter 5: Support DVD & System Recovery

Support DVD information.....	5-2
Running the support DVD.....	5-2
Drivers menu.....	5-3
Utilities menu.....	5-4
Contact.....	5-6
Other information.....	5-6
System Recovery.....	5-7
Using the Support DVD.....	5-7

Appendix

Declarations and Safety Statements.....	A-2
Copyright Information.....	A-12
Limitation of Liability.....	A-13
Service and Support.....	A-13

About This User's Manual

Notes for This Manual

Safety Precautions

Preparing Your Eee PC

**Introducing
the Eee PC**

A large, light gray, stylized number '1' is positioned behind the text 'Introducing the Eee PC', partially overlapping the word 'Eee'.

About This User’s Manual

You are reading the Eee PC User’s Manual. This User’s Manual provides information regarding the various components in the Eee PC and how to use them. The following are major sections of this User’s Manual:

- 1. Introducing the Eee PC**
Introduces the Eee PC and this User’s Manual.
- 2. Knowing the Parts**
Provides information on the Eee PC’s components.
- 3. Getting Started**
Provides information on getting started with the Eee PC.
- 4. Using the Eee PC**
Provides information on using the Eee PC’s utilities.
- 5. Support DVD & System Recovery**
Gives you information on the support DVD and system recovery.
- 6. Appendix**
Provides you safety statements.

Notes for This Manual

A few notes and warnings are used throughout this guide, allowing you to complete certain tasks safely and effectively. These notes have different degrees of importance as follows:



WARNING! Important information that must be followed for safe operation.



IMPORTANT! Vital information that must be followed to prevent damage to data, components, or persons.



TIP: Tips for completing tasks.



NOTE: Information for special situations.

Safety Precautions

The following safety precautions will increase the life of the Eee PC. Follow all precautions and instructions. Except as described in this manual, refer all servicing to qualified personnel. Do not use damaged power cords, accessories, or other peripherals. Do not use strong solvents such as thinners, benzene, or other chemicals on or near the surface.



Disconnect the AC power and remove the battery pack(s) before cleaning. Wipe the Eee PC using a clean cellulose sponge or chamois cloth dampened with a solution of nonabrasive detergent and a few drops of warm water and remove any extra moisture with a dry cloth.



DO NOT place on uneven or unstable work surfaces. Seek servicing if the casing has been damaged.



DO NOT place or drop objects on top and do not shove any foreign objects into the Eee PC.



DO NOT expose to dirty or dusty environments. DO NOT operate during a gas leak.



DO NOT expose to strong magnetic or electrical fields.



DO NOT press or touch the display panel. Do not place together with small items that may scratch or enter the Eee PC.



DO NOT expose to or use near liquids, rain, or moisture. DO NOT use the modem during electrical storms.



DO NOT leave the Eee PC on your lap or any part of the body to prevent discomfort or injury from heat exposure.



Battery safety warning: DO NOT throw the battery in fire. DO NOT short circuit the contacts. DO NOT disassemble the battery.



SAFE TEMP: This Eee PC should only be used in environments with ambient temperatures between 5°C (41°F) and 35°C (95°F)



INPUT RATING: Refer to the rating label on the bottom of the Eee PC and be sure that your power adapter complies with the rating.



DO NOT throw the Eee PC in municipal waste. Check local regulations for disposal of electronic products.



DO NOT carry or cover a Eee PC that is powered ON with any materials that will reduce air circulation such as a carrying bag.

Transportation Precautions

To prepare the Eee PC for transport, you should close the display panel to protect the keyboard and display panel.

The Eee PC's surface is easily dulled if not properly cared for. Be careful not to rub or scrape surfaces when transporting your Eee PC. You can put your Eee PC in a carrying case for protection from dirt, water, shock, and scratches.

Charging Your Batteries

If you intend to use battery power, be sure to fully charge your battery pack and any optional battery packs before going on long trips. Remember that the power adapter charges the battery pack as long as it is plugged into the computer and an AC power source. Be aware that it takes much longer to charge the battery pack when the Eee PC is in use.

Airplane Precautions

Contact your airline if you want to use the Eee PC on the airplane. Most airlines have restrictions for using electronic devices. Most airlines allow electronic use only between and not during takeoffs and landings.

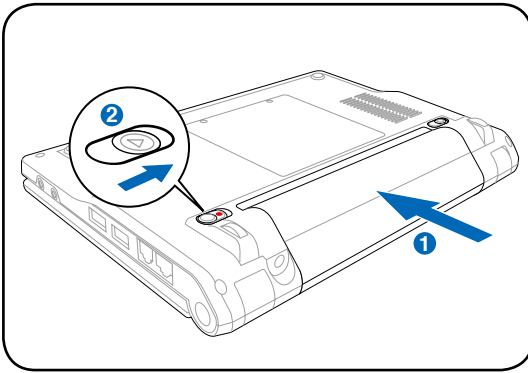


There are three main types of airport security devices: X-ray machines (used on items placed on conveyor belts), magnetic detectors (used on people walking through security checks), and magnetic wands (hand-held devices used on people or individual items). You can send your Eee PC and diskettes through airport X-ray machines. However, it is recommended that you do not send your Eee PC or diskettes through airport magnetic detectors or expose them to magnetic wands.

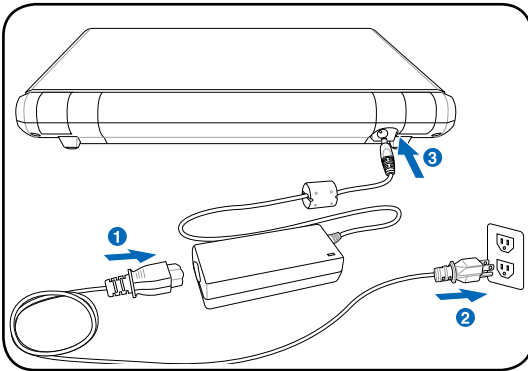
Preparing your Eee PC

These are only quick instructions for using your Eee PC. Read the following chapters for detailed information.

1. Install the battery pack

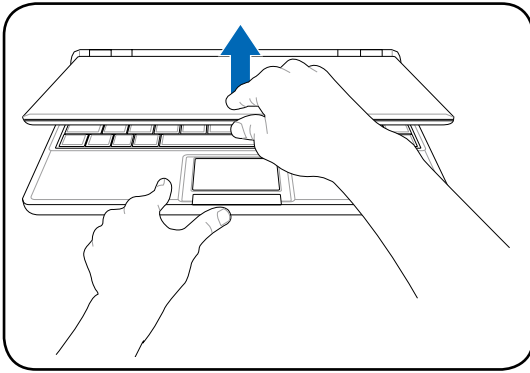


2. Connect the AC power adapter

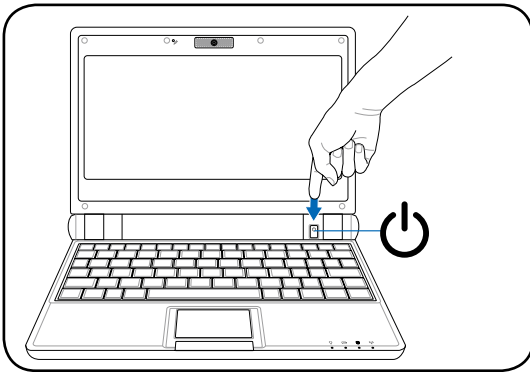


Your Eee PC may come with either a two or three-prong plug depending on territory. If a three-prong plug is provided, you must use a grounded AC outlet or use a properly grounded adapter to ensure safe operation of the Eee PC.

3. Open the display panel



4. Turn ON the Eee PC



When you open the display panel, do not force it down to the table or else the hinges may break! Never lift the Eee PC by the display panel!

Top Side

Bottom Side

Right Side

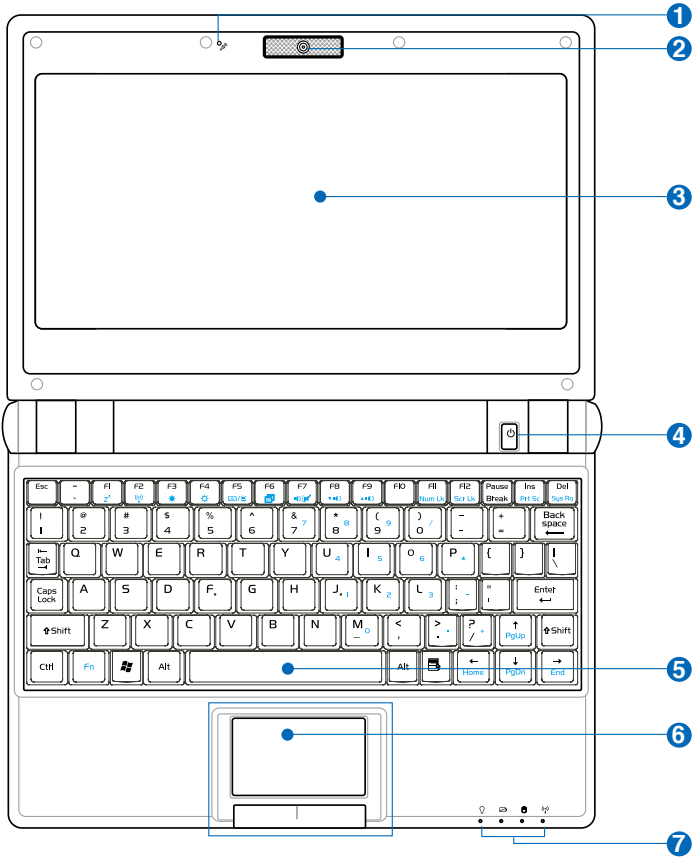
Left Side

Rear Side

Knowing the Parts **2**

Top Side

Refer to the following illustration to identify the components on this side of the Eee PC.



The keyboard differs for each territory.

1  **Microphone (Built-in)**

The built-in mono microphone can be used for skype, voice narrations, or simple audio recordings.

2  **Built-in Camera**

The built-in camera allows picture taking or video recording.

3  **Display Panel**

The display panel functions the same as a desktop monitor. The Eee PC uses an active matrix TFT LCD, which provides excellent viewing like that of desktop monitors. Unlike desktop monitors, the LCD panel does not produce any radiation or flickering, so it is easier on the eyes. Use a soft cloth without chemical liquids (use plain water if necessary) to clean the display panel.

4  **Power Switch**

The power switch allows powering ON and OFF the Eee PC and recovering from STR. Press the switch once to turn ON and hold it to turn OFF the Eee PC. The power switch only works when the display panel is opened.

5  **Keyboard**

The keyboard provides keys with comfortable travel (depth at which the keys can be depressed) and palm rest for both hands.

6  **Touchpad and Buttons**

The touchpad and its buttons comprises a pointing device that provides the same functions as a desktop mouse. Multi-finger gesture input is available to allow easy web and document navigation.

7 **Status Indicators (front)**

Power Indicator

The power indicator lights when the Eee PC is turned ON and blinks slowly when the Eee PC is in the Save-to-RAM (Suspend) mode. This indicator is OFF when the Eee PC is turned OFF.

Battery Charge Indicator

The battery charge indicator (LED) shows the status of the battery's power as follows:

ON: The Eee PC's battery is charging when AC power is connected.

OFF: The Eee PC's battery is charged or completely drained.

Blinking: Battery power is less than 10% and AC power is not connected.

Solid-State disk (SSD) Indicator

The solid-state disk drive indicator blinks when data is written to or read from the disk drive.

Wireless Indicator

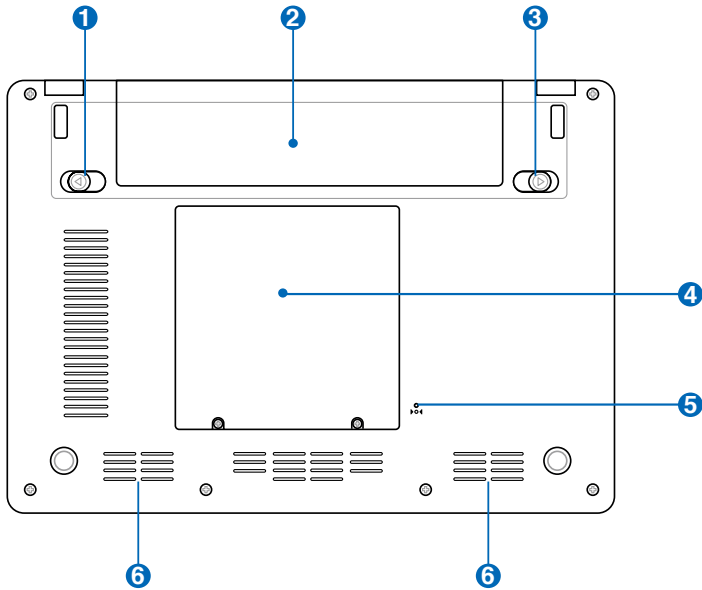
This is only applicable on models with built-in wireless LAN. When the built-in wireless LAN is enabled, this indicator lights.

Bottom Side

Refer to the following illustration to identify the components on this side of the Eee PC.



The bottom side may vary in appearance depending on model.



The bottom of the Eee PC can get very hot. Be careful when handling the Eee PC while it is in operation or recently been in operation. High temperatures are normal during charging or operation. DO NOT use on soft surfaces such as beds or sofas, which may block the vents. DO NOT PUT THE Eee PC ON YOUR LAP OR OTHER PARTS OF THE BODY TO AVOID INJURY FROM THE HEAT.

1 Battery Lock - Spring

The spring battery lock keeps the battery pack secure. When the battery pack is inserted, it will automatically lock. When removing the battery pack, this spring lock must be retained in the unlocked position.

2 **Battery Pack**

The battery pack is automatically charged when connected to an AC power source and maintains power to the Eee PC when AC power is not connected. This allows use when moving temporarily between locations. Battery time varies by usage and by the specifications for this Eee PC. The battery pack cannot be disassembled and must be purchased as a single unit.

3 **Battery Lock - Manual**

The manual battery lock is used to keep the battery pack secured. Move the manual lock to the unlocked position to insert or remove the battery pack. Move the manual lock to the locked position after inserting the battery pack.

4 **Solid-State Disk & Memory Compartment**

The solid-state disk drive and memory are secured in a dedicated compartment.

5 **Reset Button (Emergency)**

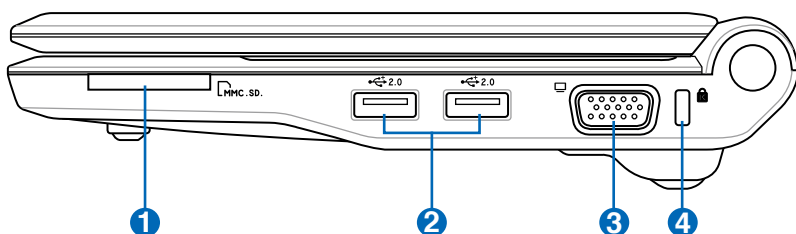
In case your operating system cannot properly turn OFF or restart, the reset button can be depressed with a pin or a straightened paper clip to restart the Eee PC.

6 **Audio Speaker System**

The built-in stereo speaker system allows you to hear audio without additional attachments. The multimedia sound system features an integrated digital audio controller that produces rich, vibrant sound (results improved with external stereo headphones or speakers). Audio features are software controlled.

Right Side

Refer to the following illustration to identify the components on this side of the Eee PC.



1 Memory Card Slot

The built-in memory card reader can read MMC/SD cards from devices such as digital cameras, MP3 players, mobile phones, and PDAs.

2 USB Port (2.0/1.1)

The USB (Universal Serial Bus) port is compatible with USB 2.0 or USB 1.1 devices such as keyboards, pointing devices, cameras, and storage devices, connected in a series up to 12Mbits/sec (USB 1.1) and 480Mbits/sec (USB 2.0). USB allows many devices to run simultaneously on a single computer, with some peripherals acting as additional plug-in sites or hubs. Also, the USB supports hot-swapping function.

3 Display (Monitor) Output

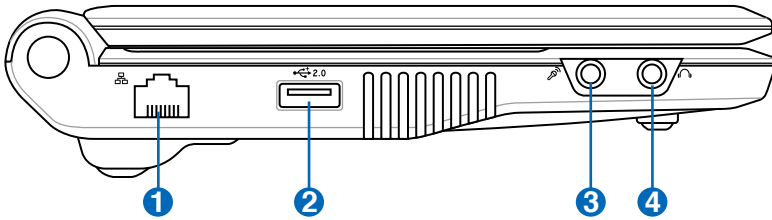
The 15-pin D-sub monitor port supports a standard VGA-compatible device such as a monitor or projector to allow viewing on a larger external display.

4 Kensington® Lock Port

The Kensington® lock port allows the Eee PC to be secured using Kensington® compatible security products. These security products usually include a metal cable and lock that prevent the Eee PC to be removed from a fixed object.

Left Side

Refer to the following illustration to identify the components on this side of the Eee PC.



1 LAN Port

The eight-pin RJ-45 LAN port (10/100M bit) supports a standard Ethernet cable for connection to a local network. The built-in connector allows convenient use without additional adapters.

2 USB Port (2.0/1.1)

The USB (Universal Serial Bus) port is compatible with USB 2.0 or USB 1.1 devices such as keyboards, pointing devices, cameras, and storage devices, connected in a series up to 12Mbits/sec (USB 1.1) and 480Mbits/sec (USB 2.0). USB allows many devices to run simultaneously on a single computer, with some peripherals acting as additional plug-in sites or hubs. Also, it supports hot-swapping function.

3 Microphone Jack

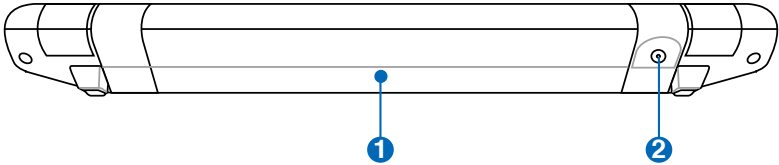
The microphone jack is designed to connect the microphone used for Skype, voice narrations, or simple audio recordings.

4 Headphone Output Jack

The $\frac{1}{8}$ " stereo headphone jack (3.55mm) connects the Eee PC's audio out signal to amplified speakers or headphones. Using this jack automatically disables the built-in speakers.

Rear Side

Refer to the following illustration to identify the components on this side of the Eee PC.



1 Battery Pack

The battery pack is automatically charged when connected to an AC power source and maintains power to the Eee PC when AC power is not connected. This allows use when moving temporarily between locations. Battery time varies by usage and by the specifications for this Eee PC. The battery pack cannot be disassembled and must be purchased as a single unit.

2 Power (DC) Input

The supplied power adapter converts AC power to DC power for use with this jack. Power supplied through this jack supplies power to the Eee PC and charges the internal battery pack. To prevent damage to the Eee PC and battery pack, always use the supplied power adapter.



CAUTION: MAY BECOME WARM TO HOT WHEN IN USE. BE SURE NOT TO COVER THE ADAPTER AND KEEP IT AWAY FROM YOUR BODY.

Power System

Touchpad Usage

Keyboard Usage

First-time Startup

Operating Mode

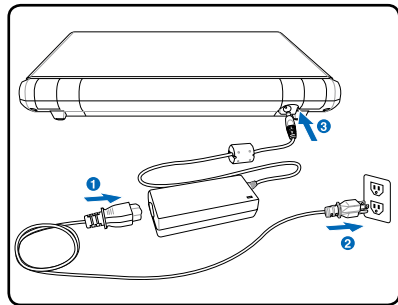
Shutdown

Getting Started **3**

Power System

Using AC Power

The Eee PC power comprises two parts, the power adapter and the battery power system. The power adapter converts AC power from a wall outlet to the DC power required by the Eee PC. Your Eee PC comes with a universal AC-DC adapter for connection to any 100V-120V as well as 220V-240V outlets without setting switches or using power converters. Different countries may require an adapter to connect the provided US-standard AC power cord to a different standard. Most hotels will provide universal outlets to support different power cords as well as voltages. It is always best to ask an experienced traveler about AC outlet voltages before travelling.



With the AC power cord connected to the AC-DC converter, connect the AC power cord to an AC outlet (preferably with surge-protection) and then connect the DC plug to the Notebook PC. Connecting the AC-DC adapter to the AC outlet first allows you to test the AC outlet's power and the AC-DC converter itself for compatibility problems before connecting the DC power to the Notebook PC. The power indicator on the adapter (if available) will light if the power is within accepted ranges.



THE POWER ADAPTER MAY BECOME WARM TO HOT WHEN IN USE. BE SURE NOT TO COVER THE ADAPTER AND KEEP IT AWAY FROM YOUR BODY.



This Eee PC may come with either a two or three-prong plug depending on territory to fit your wall outlet. If a three-prong plug is provided, you must use a grounded AC outlet or use a properly grounded adapter to ensure safe operation of the Eee PC.



Damage may occur if you use a different adapter to power the Eee PC or use the Eee PC's adapter to power other electrical devices. If there is smoke, burning scent, or extreme heat coming from the AC-DC adapter, seek servicing. Seek servicing if you suspect a faulty AC-DC adapter. You may damage both your battery pack(s) and the Eee PC with a faulty AC-DC adapter.

Using Battery Power

The Eee PC is designed to work with a removable battery pack. The battery pack consists of a set of battery cells housed together. A fully charged pack will provide several hours of battery life. Additional battery packs are optional and can be purchased separately through an Eee PC retailer. Remember to fully charge the battery before first use and whenever it is depleted to prolong battery life.

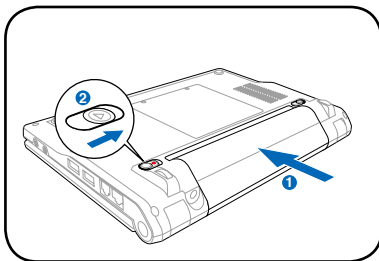
Installing and Removing the Battery Pack

Your Eee PC may not have its battery pack installed. If not, use the following procedures to install the battery pack.

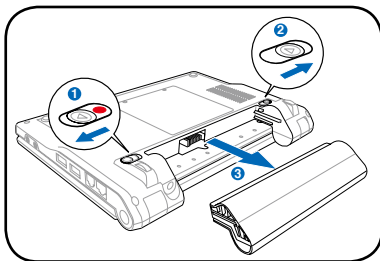


Never attempt to remove the battery pack while the Eee PC is turned ON, as this may result in the loss of working data.

To install the battery pack:



To remove the battery pack:



Only use battery packs and power adapters supplied with this Eee PC or specifically approved by the manufacturer or retailer for use with this model or else damage may occur to the Eee PC.

Battery Care

The Eee PC's battery pack, like all rechargeable batteries, has a limit on the number times it can be recharged. The battery pack's useful life will depend on your environment temperature, humidity, and how your Eee PC is used. It is ideal that the battery be used in a temperature range between 5°C and 35°C (41°F and 95°F). You must also take into account that the Eee PC's internal temperature is higher than the outside temperature. Any temperatures above or below this range will shorten the life of the battery. But in any case, the battery pack's usage time will eventually decrease and a new battery pack must be purchased from an authorized dealer for this Eee PC. Because batteries also have a shelf life, it is not recommended to buy extras for storing.




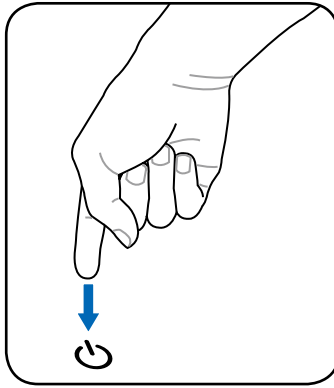
For safety reasons, DO NOT throw the battery in fire, DO NOT short circuit the contacts, and DO NOT disassemble the battery. If there is any abnormal operation or damage to the battery pack caused by impact, turn OFF the Eee PC and contact an authorized service center.




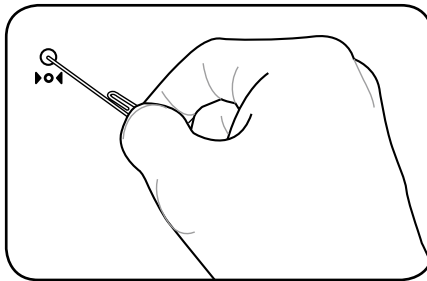
Emergency Shutdown & Reset

In case your operating system cannot properly turn OFF or restart, there are additional ways to shutdown and reset your Eee PC:

Shutdown: Hold the power button  until the system shuts down.



Reset: Press the reset button .



Use a pin or a straightened paper clip to press the reset button.

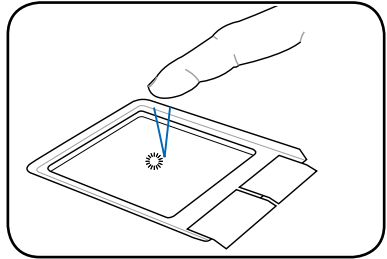
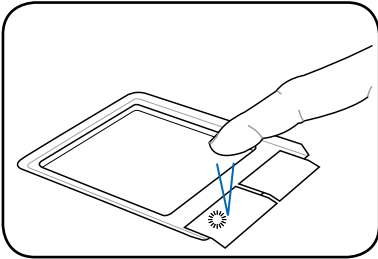


DO NOT use emergency shutdown/reset while data is being written or read; doing so can result in loss or destruction of your data.

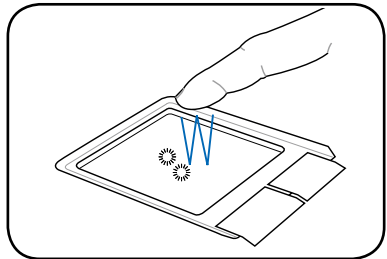
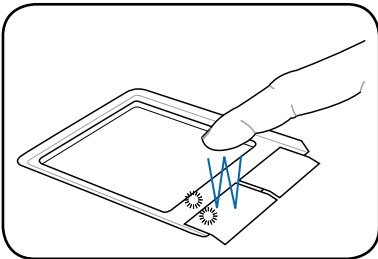
Touchpad Usage

Single-finger gesture input

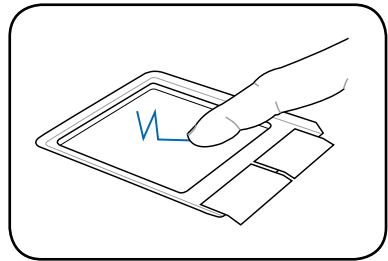
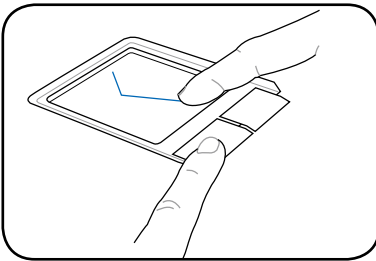
Clicking/Tapping - With the pointer over an item, press the left button or use your fingertip to touch the touchpad lightly, keeping your finger on the touchpad until the item is selected. The selected item will change color. The following 2 illustrations produce the same results.



Double-clicking/Double-tapping - This is a common skill for launching a program directly from the corresponding icon you select. Move the pointer over the icon you wish to execute, press the left button or tap the pad twice in rapid succession, and the system launches the corresponding program. If the interval between the clicks or taps is too long, the operation will not be executed. The following 2 illustrations produce the same results.

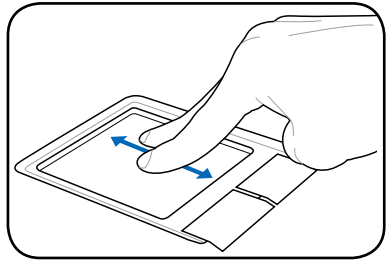


Dragging - Dragging means to pick up an item and place it anywhere on the screen you wish. You can move the pointer over the item you select, and while keeping the left button depressed, moving the pointer to the desired location, then release the button. Or, you can simply double-tap on the item and hold while dragging the item with your fingertip. The following illustrations produce the same results.



Multi-finger gesture input

Two-finger scrolling - Use two fingertips to slide up or down on the touchpad to scroll a window up or down. If your display window includes several sub-windows, move the pointer on that pane before scrolling.



Keyboard Usage

Special Function Keys

The following defines the colored hot keys on the Eee PC's keyboard. The colored commands can only be accessed by first pressing and holding the function key while pressing a key with a colored command. Some function icons appear in the Notification area after activation.



The Hot Key locations on the function keys may vary depending on model but the functions should remain the same. Follow the icons whenever your hot key locations do not match the manual.



zzZ Icon (F1): Places the Eee PC in suspend mode (Save-to-RAM).



Radio Tower (F2): Wireless Models Only: Toggles the internal wireless LAN ON or OFF with an on-screen-display. When enabled, the corresponding wireless indicator will light.



Sun Down Icon (F3): Decreases the display brightness.



Sun Up Icon (F4): Increases the display brightness.



LCD/Monitor Icons (F5): Toggles between the Eee PC's LCD display and an external monitor in this series: Eee PC LCD -> External Monitor -> Both.



Dual display mode does not work in 256 Colors, and supports a resolution of 1024 x 600 pixels only.



Connect an external monitor before booting up the Eee PC.



Task Manager Icon (F6): Initiates the Task Manager to view the application process or terminates applications.



Crossed Speaker Icon (F7): Mutes the speaker.



Speaker Down Icon (F8): Decreases speaker volume.



Speaker Up Icon (F9): Increases the speaker volume.



Num Lk (F11): Toggles the numeric keypad (number lock) ON and OFF. Allows use of a larger portion of the keyboard for number entering.



Scr Lk (F12): Toggles the "Scroll Lock" ON and OFF. Allows you to use a larger portion of the keyboard for cell navigation.



Prt Sc (Ins): Toggles the "Print Screen" key to initiate screen capture utility to capture, save, or print the contents of entire desktop.



Pg Up (↑): Press to scroll up in documents or the web browser.



Pg Dn (↓): Press to scroll down in documents or the web browser.



Home (←): Press to move the pointer to the beginning of the line.



End (→): Press to move the pointer to the end of the line.



Windows icon: Displays the start menu.



Menu with pointer icon : Activates the properties menu and is equivalent to right-clicking the touchpad/mouse on an object.

First-time Startup

For the first time you start your Eee PC, the Windows wizard will launch automatically and lead you through setting up your preferences and some basic information.

Follow the wizard instructions to finish the initialization:

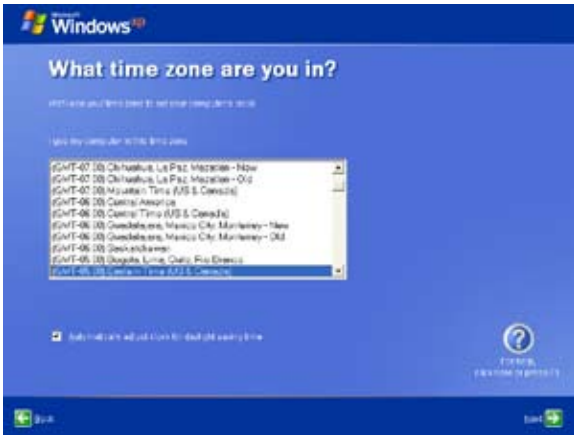
1. The **Welcome** message appears. Click **Next** to continue.



2. Select your system settings by specifying the region you are in, the language you use and the keyboard type you use. Click **Next** to continue.



- 3 Select the time zone you are in and click **Next** to continue.



4. Read the end user license agreement and click **Yes, I accept**. Click **Next** to continue.



5. Click **Help protect my PC by turning on Automatic Updates now** to get the latest important updates and click **Next** to continue.



6. Type your computer's name in the **Computer name** box and click **Next** to continue.



7. Follow the on-screen instructions to register with Microsoft and finish the initialization.

Desktop

There are several shortcuts on the desktop. Double-click them to launch the corresponding applications and enter the specified folders. Some applications would form minimized icons in the Notification area.



Displays the **start** menu

- Displays the network connection status
- Adjusts system volume
- Displays USB connection
- Displays the power status
- Adjusts the display resolution
- Adjusts the touchpad settings
- Displays the time

ASUS EeePC Tray Utility

The preloaded ASUS EeePC Tray utility allows you to turn off some devices to minimize the power consumption and helps you adjust the display resolution easily.

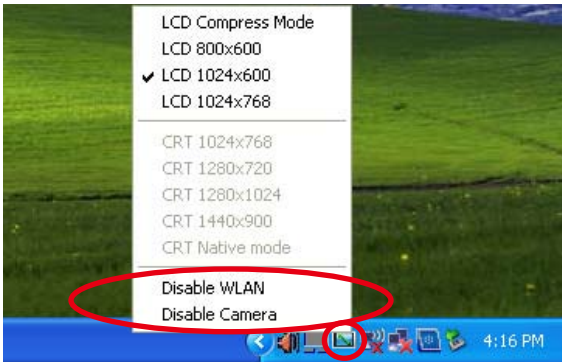
Enabling and Disabling Devices

To disable or enable devices

1. Right-click the ASUS EeePC Tray Utility icon in the Notification area and the utility shows the available options:

Disable WLAN: Turns on and off the wireless LAN connection.

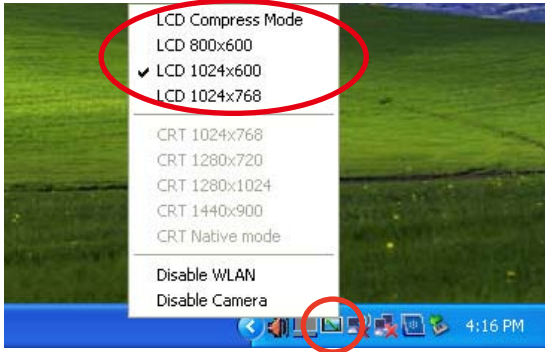
Disable Camera: Enable or disable the built-in camera.



2. Select an option to turn it on or off based on your needs. The unavailable options are dimmed.

Adjusting the display resolution

Click the ASUS EeePC Tray Utility icon in the Notification area to adjust the display resolution. Select the resolution based on your needs.



The CRT-related options are unavailable when there is no connected external monitors.

When you select **LCD 1024 x 768**, move the pointer to scroll up and down the screen.



Scroll up to see the top of the screen..



Scroll down to see the bottom of the screen.



You need not scroll up and down the screen when you select **LCD Compress Mode**.

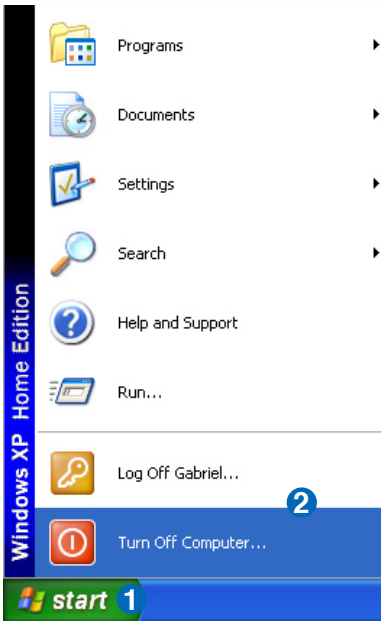


Some applications, such as Windows Media Player, may not be compatible with the LCD Compress Mode. When watching videos in LCD Compress Mode, use XPack Mini DVD Player instead.

Shutdown

Do the following instructions to turn down your Eee PC.

1. Click the **start** button to display the start menu.
2. Click **Turn Off Computer**.



3. Select **Turn Off** to power off your Eee PC.



Network Connection

ASUS Update

Outlook Express

Skype™

Microsoft® Works

StarSuite


InterVideo DVD

Using the Eee PC



Network Connection

Configuring a wireless network connection

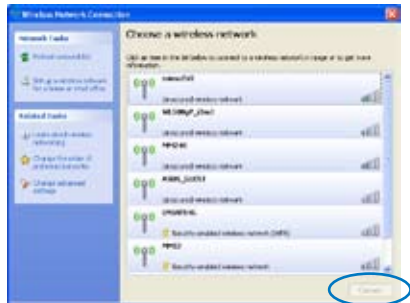
1. Double-click the crossed wireless network icon  in the Notification area.



If the wireless connection icon does not show on the taskbar. Activate the wireless LAN function by pressing $\boxed{\text{Fn}} + \boxed{\text{F2}}$ (<Fn> + <F2>) before configuring a wireless network connection.

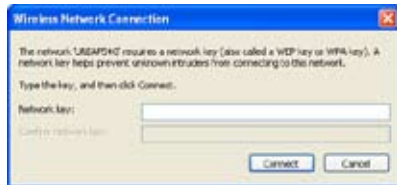


2. Select the wireless access point you want to connect to from the list and click **Connect** to build the connection.

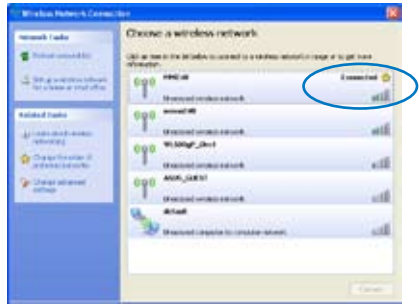


If you cannot find the desired access point, click **Refresh network list** in the left pane and search in the list again.

3. When connecting, you may have to enter a password.





4. After a connection has been established, the connection is shown on the list.



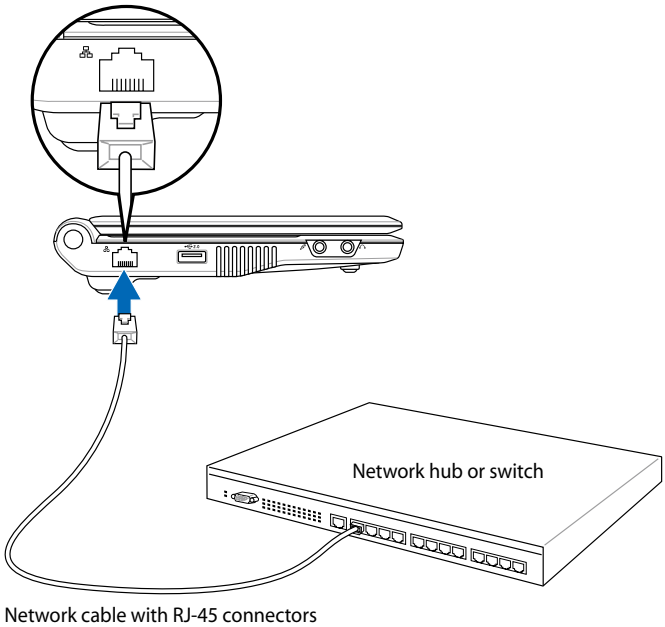
5. You can see the wireless network icon in the Notification area.



The wireless connection icon disappears when you Press  +  (<Fn> + <F2>) to disable the WLAN function.

Configuring a network connection

If you want to obtain network access, connect the network cable, with RJ-45 connectors on each end, to the network port on the Eee PC and the other end to a hub or switch. The illustration below is the example of your Eee PC connected to a network hub or switch for use with the built-in Ethernet controller. Connect to network before enjoying all the network services and functions in Eee PC.



Network cable with RJ-45 connectors

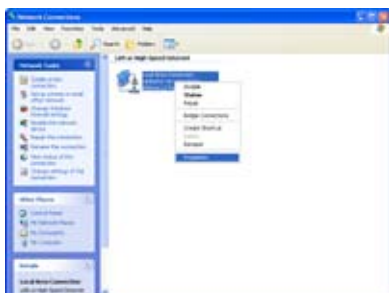
Local Area Network

Using a dynamic IP:

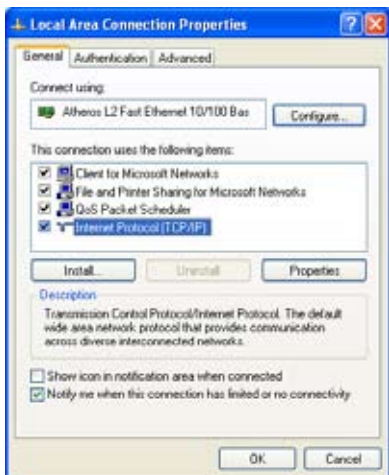
1. Right-click the network icon with a yellow warning triangle in the Notification area and select **Open Network Connections**.



2. Right-click **Local Area Connection** and select **Properties**.



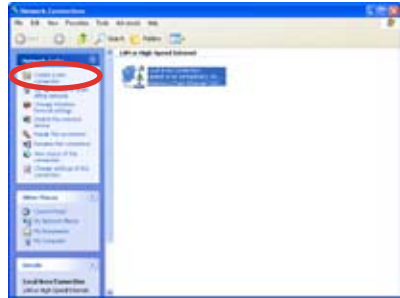
3. Highlight **Internet Protocol(TCP/IP)** and click **Properties**.



4. Click **Obtain an IP address automatically** and click **OK**.



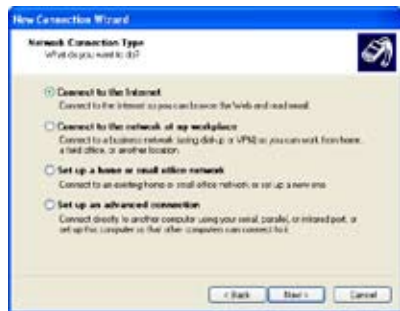
5. Click **Create a new connection** to start the New Connection Wizard.



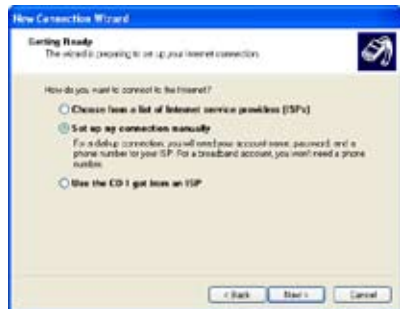
6. Click **Next**.



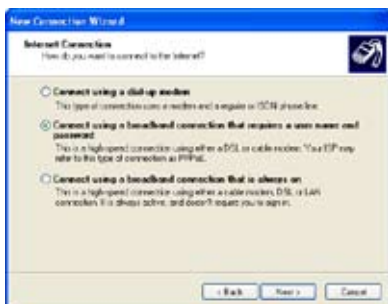
7. Click **Connect to the Internet** and click **Next**.



8. Click **Set up my connection manually**.



9. Select your connection type and click **Next**.



10. Enter your ISP Name and click **Next**.



11. Enter your User name and Password. Click **Next**.



12. Click **Finish** to finish the configuration.



13. Enter your user name and password. Click **Connect** to connect to the Internet.



Contact your Internet Service Provider (ISP) if you have problems connecting to the network.

Using a static IP:

1. Repeat the step 1–3 of Using a dynamic IP to start the static IP network configuration.
2. Click **Use the following IP address**.



3. Enter the IP address, Subnet mask and Gateway from your service provider.
4. If needed, enter the preferred DNS Server address and alternative address.
5. After entering all the related values, click **OK** to build the network connection.



Contact your Internet Service Provider (ISP) if you have problems connecting to the network.

Browsing web pages

After you finish the network setup, click **Internet Explorer** on the desktop and start enjoying net surfing.



Launches the Internet Explorer web browser



Visit our Eee PC homepage (<http://eeepc.asus.com>) to obtain the latest information and register at <http://vip.asus.com> for full service of your Eee PC.

ASUS Update

The ASUS Update is a utility that allows you to manage, save, and update the Eee PC BIOS in Windows® environment. The ASUS Update utility allows you to:

- Save the current BIOS file
- Download the latest BIOS file from the Internet
- Update the BIOS from an updated BIOS file
- Update the BIOS directly from the Internet, and
- View the BIOS version information.

This utility is pre-loaded in your Eee PC and is also available in the support DVD that comes with the Eee PC package.

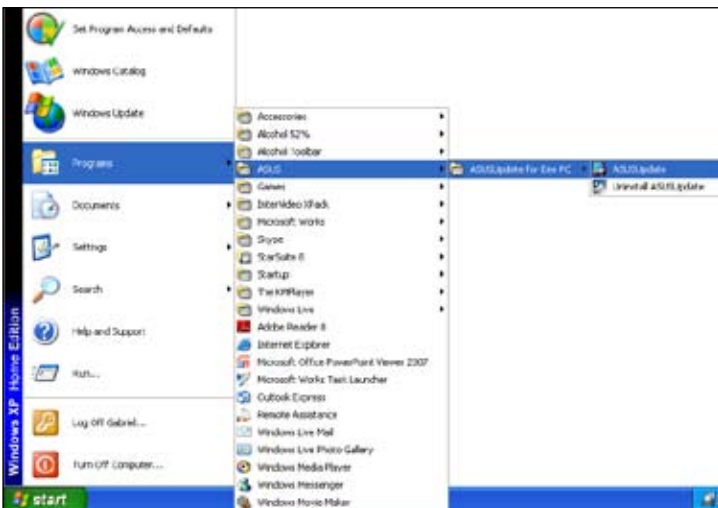


ASUS Update requires an Internet connection either through a network or an Internet Service Provider (ISP).

Updating the BIOS through the Internet

To update the BIOS through the Internet:

1. Launch the ASUS Update utility from the Windows® desktop by clicking **Start > Programs > ASUS > ASUSUpdate for Eee PC > ASUSUpdate**. The ASUS Update main window appears.



2. Select **Update BIOS from Internet** from the drop-down menu, then click **Next**.



3. Select the ASUS FTP site nearest you to avoid network traffic, or click **Auto Select**. Click **Next**.



4. From the FTP site, select the desired BIOS version and click **Next**.
5. Follow the screen instructions to complete the update process.



The ASUS Update utility is capable of updating itself through the Internet. Always update the utility to avail all its features.

Updating the BIOS through a BIOS file

To update the BIOS through a BIOS file:

1. Launch the ASUS Update utility from the Windows® desktop by clicking **Start > Programs > ASUS > ASUSUpdate for EeePC > ASUSUpdate**. The ASUS Update main window appears.
2. Select **Update BIOS from file** from the drop-down menu, then click **Next**.



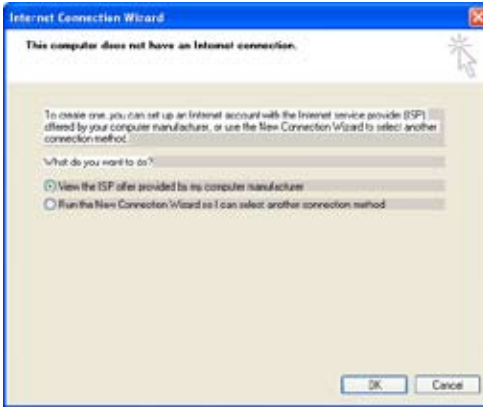
3. Locate the BIOS file from the **Open** window, then click **Open**.
4. Follow the screen instructions to complete the update process.

Outlook Express

The Outlook Express e-mail client allows to import preferences, account settings, address books, and other data from an existing account in your original personal computer or notebook.

To launch Outlook Express:

1. Click **Start > Programs > Outlook Express**.



2. Follow the Wizard to finish a new account setup.



Contact your service provider if you do not know the incoming and outgoing server address of your e-mail account.

3. The Outlook Express main window appears as follows.



Skype™

Skype enables users to make free calls to other Skype users or cheaper calls to landlines or mobile phones with Internet access. It also offers instant messaging function, which users can use to chat online.

To start using Skype application

1. Double-click the Skype icon on the desktop.



Starts Skype

2. Enter your Skype name and other information to create a new Skype account. If you have already had a Skype account, click **Cancel** to sign in directly.
3. Enter your **Skype Name** and **Password** in the box and click **Sign in** to start using Skype.



Microsoft® Works

The Microsoft® Works includes several office software like **Works Word Processor, Works Spreadsheet, Dictionary, PowerPoint Viewer**, etc.. You need to initialize the software before use.

Initializing Microsoft® Works

1. Double-click the Microsoft Works icon on the desktop.
2. In the **Microsoft Software License Terms** dialog box, click **I Agree** and click **Next**.



3. In the **Help us make Works better** dialog box, click **Yes** or **No** and click **Finish** to complete the initialization. We commend you select **Yes** to help improve the quality, reliability and performance of this software.



Either **Yes** or **No** can finish the initialization.

Using Microsoft® Works

Microsoft® Works combines several office applications together and helps you easily manage your schedule and do your work.

Programs

The following example describes how to use Works Word Processor, Microsoft® Works.

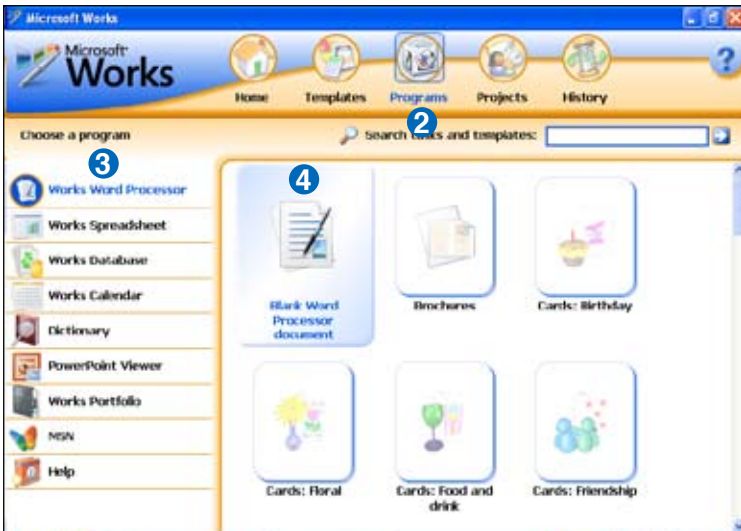


The Microsoft® Works provides various office applications for different jobs. Select other desired task categories from the list on the left and get your work done more efficiently.

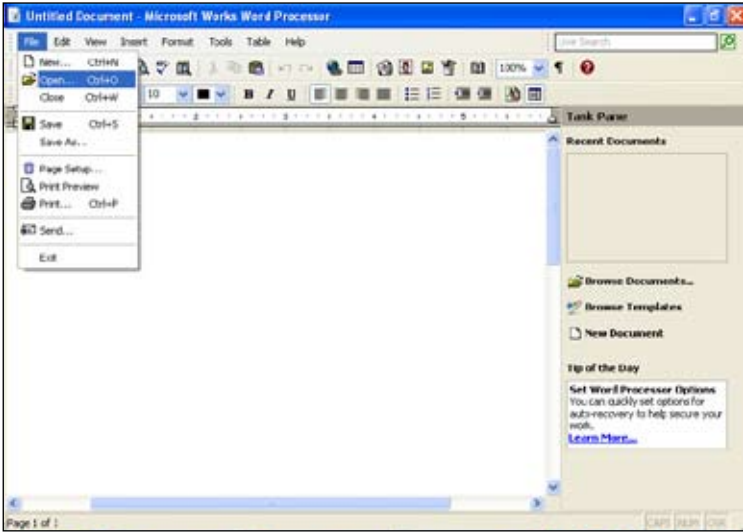
1. Double-click the Microsoft® Works shortcut on the desktop.
2. Click **Programs** on the top to switch screens.
3. Click **Works Word Processor** from the list in the left pane
4. Select **Blank Word Processor document** in the right pane.



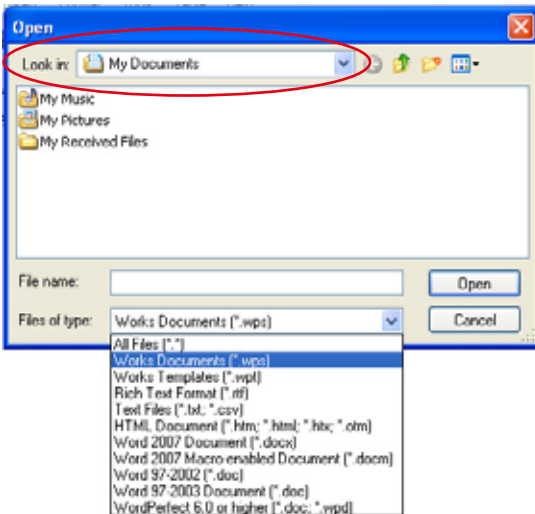
Choose other templates you want to use in the right pane if needed.



- Under the **File** menu, click **Open**.
Or press <Ctrl> + <O> directly.

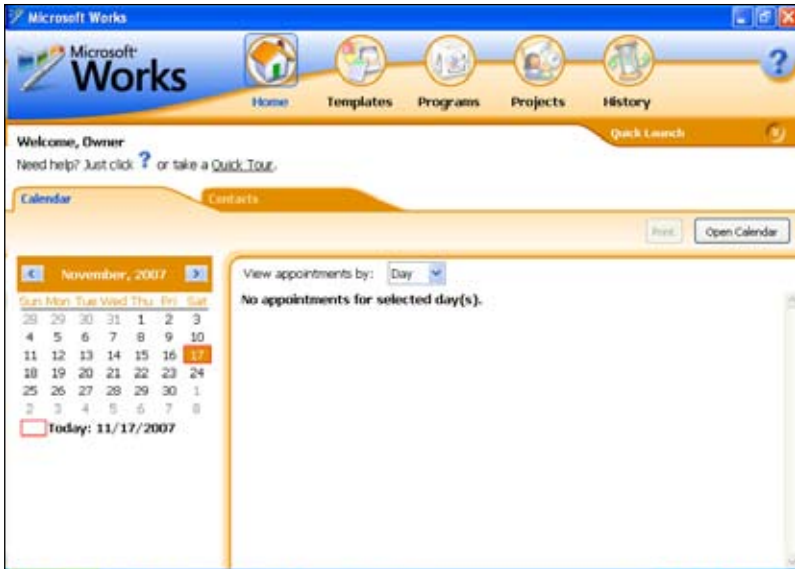


- In the **Open** dialog box, click **Look in** and locate your file. You can also shorten the process by sorting the files by file types.



Other functions

Click the buttons on the top to switch screens.



Microsoft® Works Home

The screen displays the calendar and your appointments.

Microsoft® Works Templates

The screen provides templates for different tasks. Select a task category from the list on the left and start using the built-in templates.

Microsoft® Works Projects

The Microsoft® Works Projects helps you smartly manage your projects.

Microsoft® Works History

The history screen helps you track the history you use the Microsoft® Works software. You can either sort by names, dates, templates or programs.

StarSuite 8

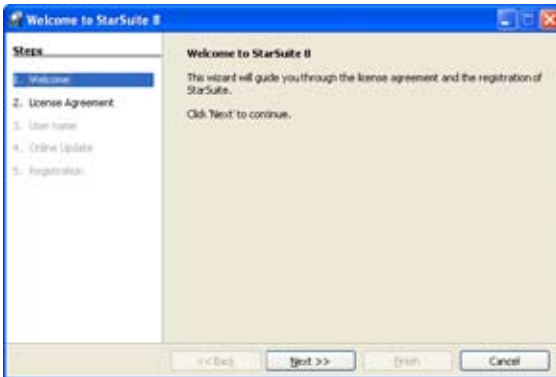
StarSuite 8 is a complete office suite which allows you to edit a document, calculate on a spreadsheet, prepare presentation slides, make charts or sketches, and build your own database.



Windows Works are the default applications to open and edit the related documents. Right-click the file, point to **Open With** and select the desired StarSuite application if you want to open and edit the file with StarSuite.

Initializing StarSuite 8

1. Double-click to open the StarSuite 8 folder on the desktop.
2. Double-click the desired application and the **Welcome to StarSuite 8** dialog box appears.

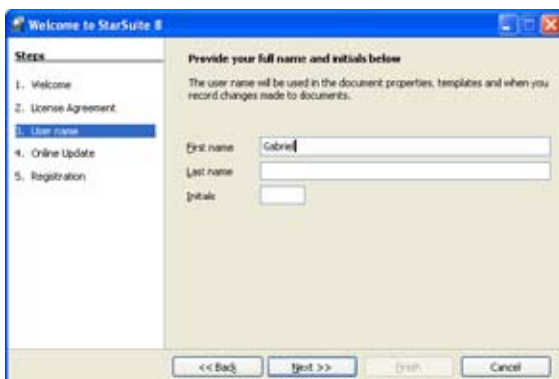


3. Scroll down to finish reading the license agreement and click **Accept** to continue.

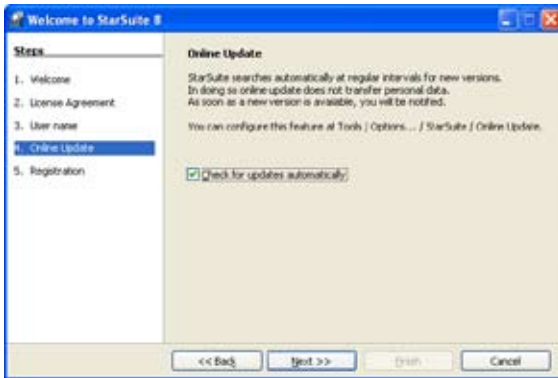


The **Accept** button appears dimmed and unavailable before you scroll down the license agreement.

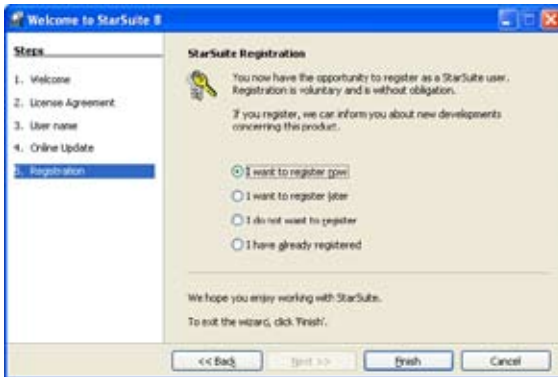
4. Enter your name and click **Next** to continue.



5. Click the **Check for updates automatically** check box to get the online update and click **Next** to continue.



6. Click an option and click **Finish** to finish the initialization.

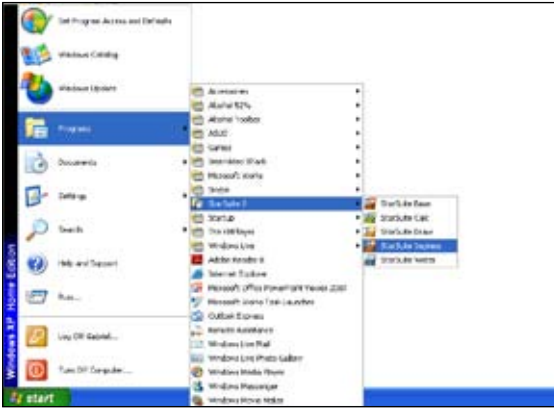


The registration is voluntary.

StarSuite Impress

To prepare presentation slides

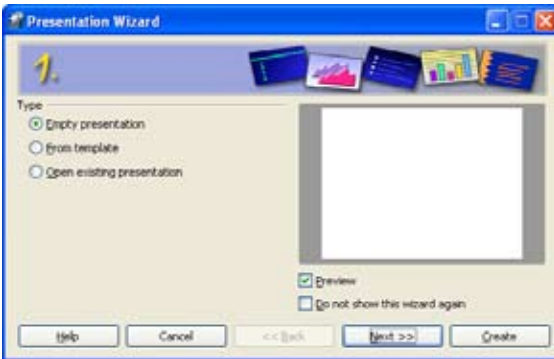
1. Click **start** > **Programs** > **StarSuite 8** > **StarSuite Impress**.



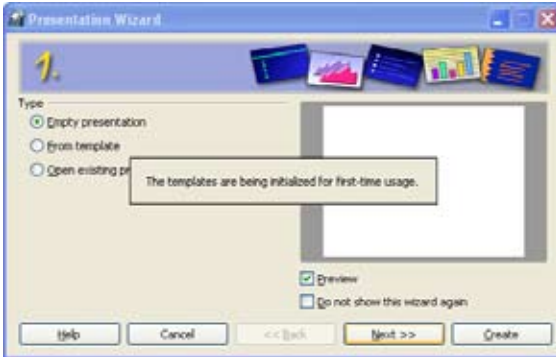
2. Click **Empty presentation** to create a new presentation slide, or **From template** to create a new presentation slide with a template. If you want to edit an existing file, click **Open existing presentation**. Click **Next** to continue



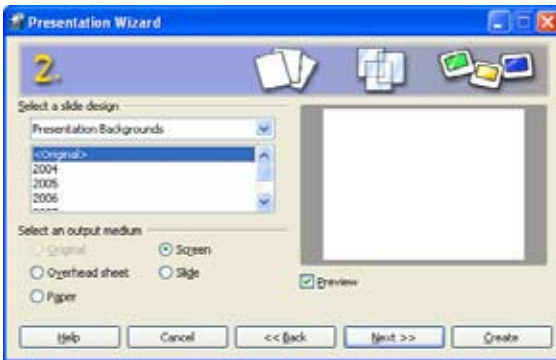
You can click **Create** to skip all the wizard instructions.



- For the first time use, the software takes time to initialize the templates.

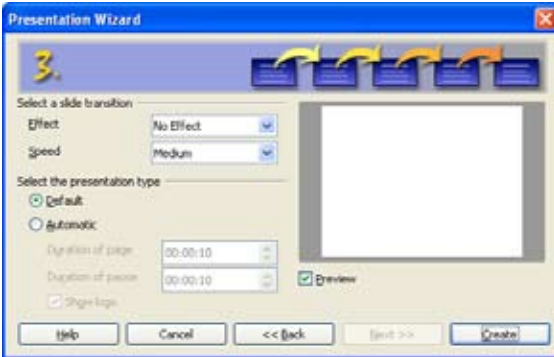


- Select a slide design and click **Next**.

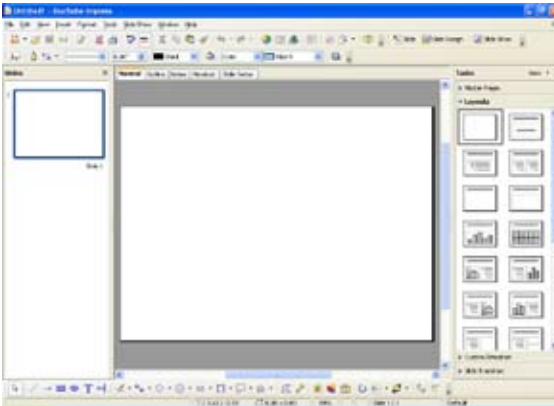


Click the Preview check box to preview the slide design.

5. Select a slide transition and the presentation type. Click **Create** to start **StarSuite Impress**.



6. The main screen appears. You can start preparing your presentation slides with **StarSuite Impress**.



StarSuite Writer

StarSuite Writer is a convenient word processing application that allows you to create and covert documents, or collaborate with others. Click **start > Programs > StarSuite 8 > StarSuite Writer** to start StarSuite Writer.

StarSuite Calc

StarSuite is a spreadsheet program that helps you analyze results, and share data. Click **start > Programs > StarSuite 8 > StarSuite Calc** to start StarSuite Calc.

StarSuite Draw

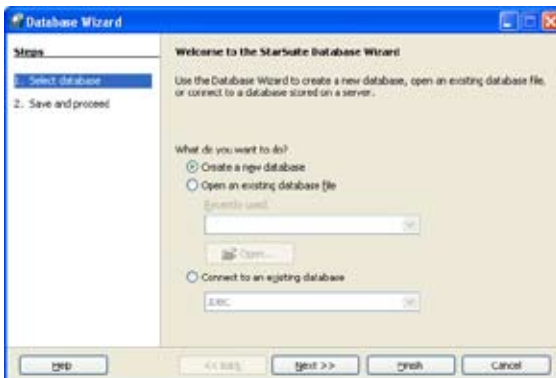
StarSuite is an illustration tool that you can use to export and share drawings. Click **start > Programs > StarSuite 8 > StarSuite Draw** to start StarSuite Draw.

StarSuite Database

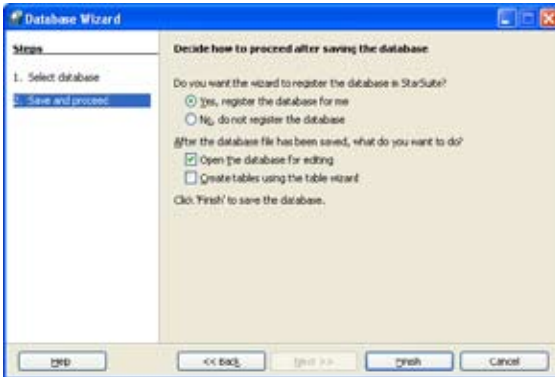
StarSuite Database helps you create your own database.

To start StarSuite Database

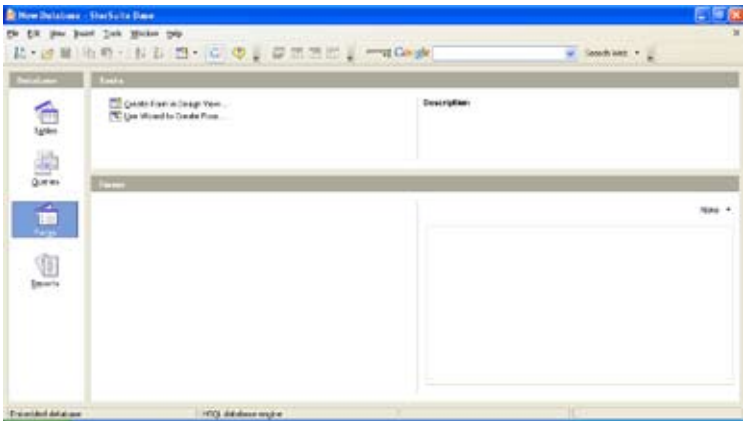
1. Click **start > Programs > StarSuite 8 > StarSuite Database**.
2. In the **Database Wizard** dialog box, you can select to create a new database, open an existing database, or connect to a server database.



3. Select an action to proceed after saving the database and click **Finish**.



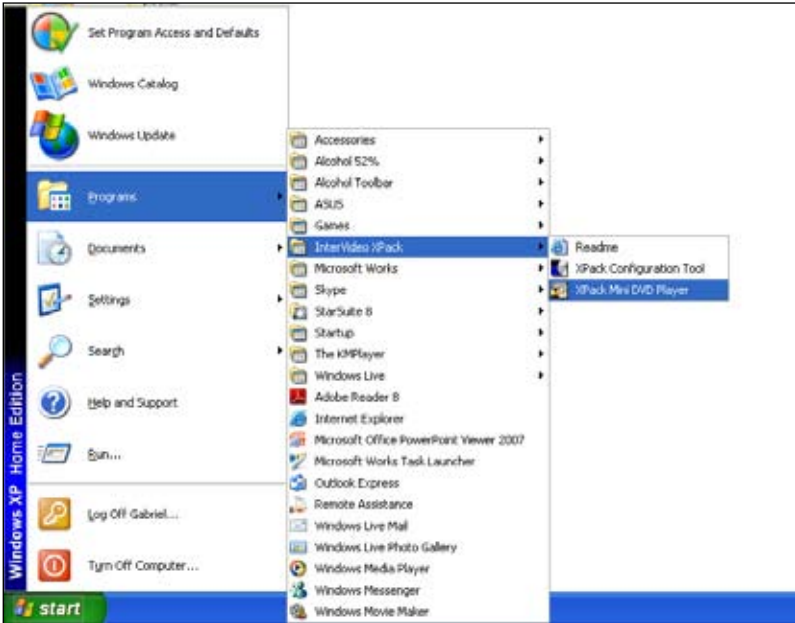
4. Select a location to save the database file.
5. StarSuite Database is ready for use.



InterVideo DVD XPack

Launching InterVideo DVD XPack

Click **start** > **Programs** > **InterVideo XPack** > **XPack Mini DVD Player** to start the DVD player.



The Eee PC package does not include an external optical disk drive. Purchase an optional optical disk drive based on your needs.

Using InterVideo DVD XPack

After the InterVideo XPack screen appears, you can play, pause, stop, forward, rewind the video with the buttons on the floating toolbar and adjust the volume with the slider.



XPack Mini DVD Player supports video and audio files in the following format: MPEG 1, MPEG 2, MP3, WAV, WMA, and WMV. The actual supported codecs vary depending on model.

Support DVD

System Recovery

**Support DVD &
System Recovery**

A large, light gray number '5' is positioned behind the text 'Support DVD & System Recovery'.

Support DVD information

The support DVD that comes with the Eee PC package contains the drivers, software applications, and utilities that you can install to avail all the features.

Running the support DVD

Insert the support DVD in the external optical drive. The DVD automatically displays the Drivers menu if Autorun is enabled in your computer.



Click an icon to display support DVD/ Eee PC information

Click an item to install



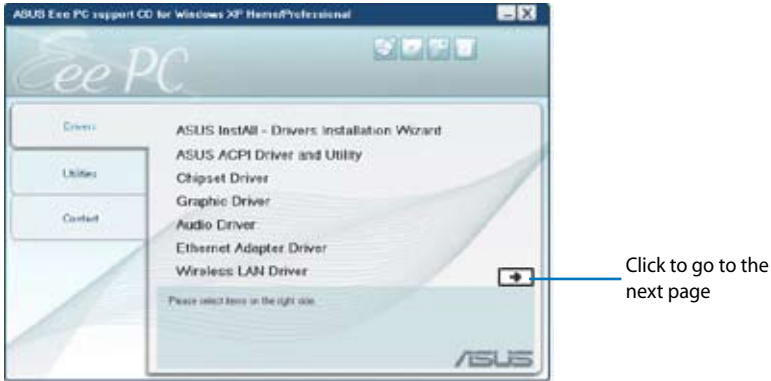
If Autorun is NOT enabled in your computer, browse the contents of the support DVD to locate the file ASSETUP.EXE from the BIN folder. Double-click the ASSETUP.EXE file to run the DVD.



The drivers and utilities bundled in the support DVD are subject to change without notice.

Drivers menu

The Drivers menu shows available device drivers when the system detects installed devices. Install the necessary drivers to activate the devices.



InstAll - Drivers Installation Wizard

Installs all the drivers.

ASUS ACPI Driver and Utility

Installs ASUS ACPI driver before all the drivers if you are not using InstAll Wizard.

Chipset Driver

Installs the chipset driver.

Graphics Driver

Installs the Graphics driver.

Audio Driver

Installs the audio driver.

Ethernet Adapter Driver

Installs the Ethernet driver.

Wireless LAN Driver

Installs the wireless LAN driver.



Click to go to the previous page

TouchPad Driver

Installs the touchpad driver.

Utilities menu

The Utilities menu shows the applications that the Eee PC supports.



Click to go to the next page

InstAll - Installation Wizard for Utilities

Installs all the utilities.

ASUS Update

The ASUS Update utility allows you to update the Eee PC BIOS in the Windows® environment. This utility requires an Internet connection either through a network or an Internet Service Provider (ISP).

ASUS OS Cleaner

Installs ASUS OS cleaner application.

Ethernet Utility

Installs the Ethernet utility.

ADOBE Acrobat Reader

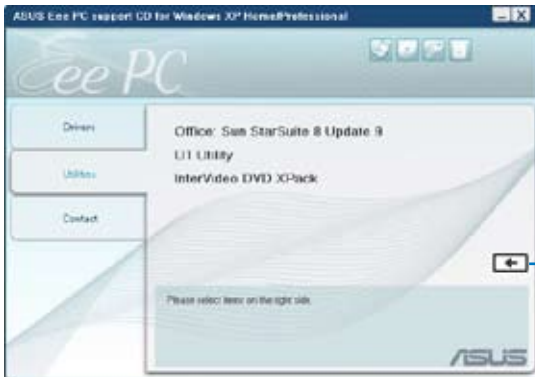
Installs the Adobe® Acrobat® Reader that allows you to open, view, and print documents in Portable Document Format (PDF).

Skype™

Installs Skype™ application.

Office: Sun StarSuite 8

Installs StarSuite 8 office applications.



Click to go to the previous page

Office: Sun StarSuite 8 Update 9

Updates StarSuite 8.

U1 Utility

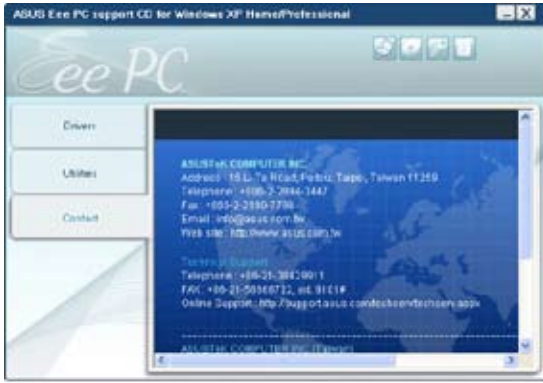
Installs U1 skype phone utility.

InterVideo DVD XPack

Installs InterVideo DVD Xpack.

Contact

Click the Contact tab to display the ASUS contact information.



Other information

The icons on the top right corner of the screen provide additional information on the Eee PC and the contents of the support DVD. Click an icon to display the specified information.



System information



Technical support



DVD content



File list

System Recovery

Using the Support DVD

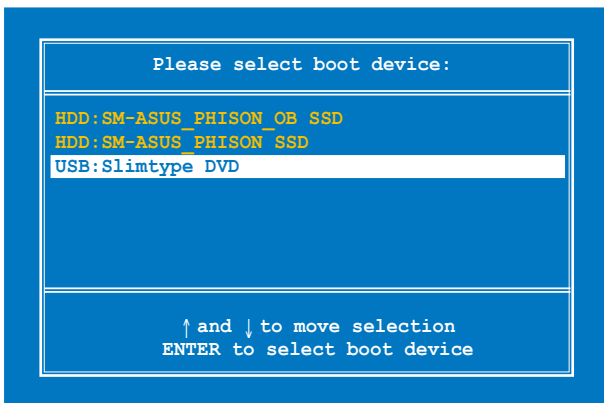
The Support DVD includes an image of the operating system, installed on your system at the factory. The Support DVD provides a comprehensive recovery solution that quickly restores your system to its original working state, provided that your system drive is in good working order. Before using the Support DVD, copy your data files (such as Outlook PST files) to floppy disks or to a network drive and make note of any customized configuration settings (such as network settings).

1. Connect an external optical drive to your Eee PC and insert the Support DVD into the optical drive (System needs to be powered ON).
2. Start the system and press **<F2>** on bootup to enter the BIOS setup. Go to **Advanced**, set **OS Installation** to [Start], and then enable all the items in **Onboard Devices Configuration**.

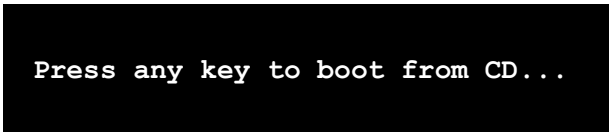


Ensure that you have set **OS Installation** to [Start] before installing Windows® XP service pack 2, otherwise it may cause the system malfunction.

3. Press **<F10>** to save the configuration and reboot the system.
4. Press **<ESC>** on bootup and the **Please select boot device** screen appears. Select USB:XXXXXX (may be labeled as the ODD brand name) to boot from the optical drive.



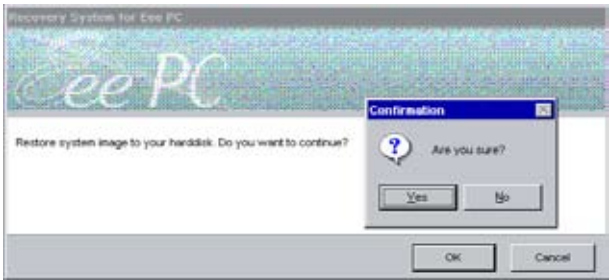
5. Press any key to boot from the optical drive.



6. Click **OK** in the **Recovery System for Eee PC** dialog.

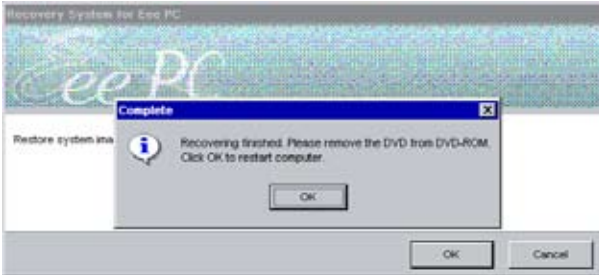


7. Click **Yes** to start the system recovery.



You will lose all your data during the system recovery. Ensure to back up your important data before recovering your system.

8. After the system recovery is completed, eject the the Support DVD from the optical drive and click **OK** to restart the Eee PC.



9. After the Windows® XP recovery is completed. Restart the system and press **<F2>** on bootup to enter the BIOS setup. Go to **Advanced** and set **OS Installation** back to [Finished].
10. Press **<F10>** to save the configuration and reboot the system.

Declarations and Safety Statements

Copyright Information

Limitation of Liability

Service and Support

Appendix

A large, light gray, sans-serif letter 'A' is positioned behind the word 'Appendix', serving as a decorative background element for the section title.

Declarations and Safety Statements

Federal Communications Commission Statement

This device complies with FCC Rules Part 15. Operation is subject to the following two conditions:

- This device may not cause harmful interference, and
- This device must accept any interference received, including interference that may cause undesired operation.

This equipment has been tested and found to comply with the limits for a class B digital device, pursuant to Part 15 of the Federal Communications Commission (FCC) rules. These limits are designed to provide reasonable protection against harmful interference in a residential installation. This equipment generates, uses, and can radiate radio frequency energy and, if not installed and used in accordance with the instructions, may cause harmful interference to radio communications. However, there is no guarantee that interference will not occur in a particular installation. If this equipment does cause harmful interference to radio or television reception, which can be determined by turning the equipment off and on, the user is encouraged to try to correct the interference by one or more of the following measures:

- Reorient or relocate the receiving antenna.
- Increase the separation between the equipment and receiver.
- Connect the equipment into an outlet on a circuit different from that to which the receiver is connected.
- Consult the dealer or an experienced radio/TV technician for help.



The use of a shielded-type power cord is required in order to meet FCC emission limits and to prevent interference to the nearby radio and television reception. It is essential that only the supplied power cord be used. Use only shielded cables to connect I/O devices to this equipment. You are cautioned that changes or modifications not expressly approved by the party responsible for compliance could void your authority to operate the equipment.

(Reprinted from the Code of Federal Regulations #47, part 15.193, 1993. Washington DC: Office of the Federal Register, National Archives and Records Administration, U.S. Government Printing Office.)

FCC Radio Frequency (RF) Exposure Caution Statement



Any changes or modifications not expressly approved by the party responsible for compliance could void the user's authority to operate this equipment. "The manufacture declares that this device is limited to Channels 1 through 11 in the 2.4GHz frequency by specified firmware controlled in the USA."

This equipment complies with FCC radiation exposure limits set forth for an uncontrolled environment. To maintain compliance with FCC RF exposure compliance requirements, please avoid direct contact to the transmitting antenna during transmitting. End users must follow the specific operating instructions for satisfying RF exposure compliance.

Max. SAR Measurement (1g)

802.11b SAR Value: 0.033 W/kg

802.11g SAR Value: 0.055 W/kg

Declaration of Conformity

(R&TTE directive 1999/5/EC)

The following items were completed and are considered relevant and sufficient:

- Essential requirements as in [Article 3]
- Protection requirements for health and safety as in [Article 3.1a]
- Testing for electric safety according to [EN 60950]
- Protection requirements for electromagnetic compatibility in [Article 3.1b]
- Testing for electromagnetic compatibility in [EN 301 489-1] & [EN 301 301]
- Testing according to [489-17]
- Effective use of the radio spectrum as in [Article 3.2]
- Radio test suites according to [EN 300 328-2]

CE Mark Warning

This is a Class B product, in a domestic environment, this product may cause radio interference, in which case the user may be required to take adequate measures.

IC Radiation Exposure Statement for Canada

This equipment complies with IC radiation exposure limits set forth for an uncontrolled environment. To maintain compliance with IC RF exposure compliance requirements, please avoid direct contact to the transmitting antenna during transmitting. End users must follow the specific operating instructions for satisfying RF exposure compliance.

Operation is subject to the following two conditions:

- This device may not cause interference and
- This device must accept any interference, including interference that may cause undesired operation of the device.

To prevent radio interference to the licensed service (i.e. co-channel Mobile Satellite systems) this device is intended to be operated indoors and away from windows to provide maximum shielding. Equipment (or its transmit antenna) that is installed outdoors is subject to licensing.

Because high power radars are allocated as primary users (meaning they have priority) in 5250-5350 MHz, these radars could cause interference and/or damage to license exempt LAN devices.

Max. SAR Measurement (1g)

802.11b SAR Value: 0.033 W/kg

802.11g SAR Value: 0.055 W/kg

Wireless Operation Channel for Different Domains

N. America	2.412-2.462 GHz	Ch01 through CH11
Japan	2.412-2.484 GHz	Ch01 through Ch14
Europe ETSI	2.412-2.472 GHz	Ch01 through Ch13

France Restricted Wireless Frequency Bands

Some areas of France have a restricted frequency band. The worst case maximum authorized power indoors are:

- 10mW for the entire 2.4 GHz band (2400 MHz–2483.5 MHz)
- 100mW for frequencies between 2446.5 MHz and 2483.5 MHz



Channels 10 through 13 inclusive operate in the band 2446.6 MHz to 2483.5 MHz.

There are few possibilities for outdoor use: On private property or on the private property of public persons, use is subject to a preliminary authorization procedure by the Ministry of Defense, with maximum authorized power of 100mW in the 2446.5–2483.5 MHz band. Use outdoors on public property is not permitted.

In the departments listed below, for the entire 2.4 GHz band:

- Maximum authorized power indoors is 100mW
- Maximum authorized power outdoors is 10mW

Departments in which the use of the 2400–2483.5 MHz band is permitted with an EIRP of less than 100mW indoors and less than 10mW outdoors:

01 Ain Orientales	02 Aisne	03 Allier
05 Hautes Alpes	08 Ardennes	09 Ariège
11 Aude	12 Aveyron	16 Charente
24 Dordogne	25 Doubs	26 Drôme
32 Gers	36 Indre	37 Indre et Loire
41 Loir et Cher	45 Loiret	50 Manche
55 Meuse	58 Nièvre	59 Nord

60 Oise 61 Orne 63 Puy du Dôme
64 Pyrénées Atlantique 66 Pyrénées 67 Bas Rhin
68 Haut Rhin 70 Haute Saône
71 Saône et Loire 75 Paris
82 Tarn et Garonne 84 Vaucluse 88 Vosges
89 Yonne 90 Territoire de Belfort
94 Val de Marne

This requirement is likely to change over time, allowing you to use your wireless LAN card in more areas within France. Please check with ART for the latest information (www.art-telecom.fr)



Your WLAN Card transmits less than 100mW, but more than 10mW.

UL Safety Notices

Required for UL 1459 covering telecommunications (telephone) equipment intended to be electrically connected to a telecommunication network that has an operating voltage to ground that does not exceed 200V peak, 300V peak-to-peak, and 105V rms, and installed or used in accordance with the National Electrical Code (NFPA 70).

When using the Eee PC modem, basic safety precautions should always be followed to reduce the risk of fire, electric shock, and injury to persons, including the following:

- DO NOT use the Eee PC near water, for example, near a bath tub, wash bowl, kitchen sink or laundry tub, in a wet basement or near a swimming pool.
- DO NOT use the Eee PC during an electrical storm. There may be a remote risk of electric shock from lightning.
- DO NOT use the Eee PC in the vicinity of a gas leak.

Required for UL 1642 covering primary (nonrechargeable) and secondary (rechargeable) lithium batteries for use as power sources in products. These batteries contain metallic lithium, or a lithium alloy, or a lithium ion, and may consist of a single electrochemical cell or two or more cells connected in series, parallel, or both, that convert chemical energy into electrical energy by an irreversible or reversible chemical reaction.

- Do not dispose the Eee PC battery pack in a fire, as they may explode. Check with local codes for possible special disposal instructions to reduce the risk of injury to persons due to fire or explosion.
- Do not use power adapters or batteries from other devices to reduce the risk of injury to persons due to fire or explosion. Use only UL certified power adapters or batteries supplied by the manufacturer or authorized retailers.

Power Safety Requirement

Products with electrical current ratings up to 6A and weighing more than 3Kg must use approved power cords greater than or equal to: H05VV-F, 3G, 0.75mm² or H05VV-F, 2G, 0.75mm².



This symbol of the crossed out wheeled bin indicates that the product (electrical, electronic equipment, and mercury-containing button cell battery) should not be placed in municipal waste. Check local regulations for disposal of electronic products.

Nordic Lithium Cautions (for lithium-ion batteries)



CAUTION! Danger of explosion if battery is incorrectly replaced. Replace only with the same or equivalent type recommended by the manufacturer. Dispose of used batteries according to the manufacturer's instructions. (English)



ATTENZIONE! Rischio di esplosione della batteria se sostituita in modo errato. Sostituire la batteria con un una di tipo uguale o equivalente consigliata dalla fabbrica. Non disperdere le batterie nell'ambiente. (Italian)



VORSICHT! Explosionsgefahr bei unsachgemäßen Austausch der Batterie. Ersatz nur durch denselben oder einem vom Hersteller empfohlenem ähnlichen Typ. Entsorgung gebrauchter Batterien nach Angaben des Herstellers. (German)



ADVARSEL! Lithiumbatteri - Eksplosionsfare ved fejlagtig håndtering. Udskiftning må kun ske med batteri af samme fabrikat og type. Levér det brugte batteri tilbage til leverandøren. (Danish)



WARNING! Explosionsfara vid felaktigt batteribyte. Använd samma batterityp eller en ekvivalent typ som rekommenderas av apparattillverkaren. Kassera använt batteri enligt fabrikantens instruktion. (Swedish)



VAROITUS! Paristo voi räjähtää, jos se on virheellisesti asennettu. Vaihda paristo ainoastaan laitevalmistajan suositteluun tyypin. Hävitä käytetty paristo valmistajan ohjeiden mukaisesti. (Finnish)



ATTENTION! Il y a danger d'explosion s'il y a remplacement incorrect de la batterie. Remplacer uniquement avec une batterie du même type ou d'un type équivalent recommandé par le constructeur. Mettre au rebut les batteries usagées conformément aux instructions du fabricant. (French)



ADVARSEL! Eksplosjonsfare ved feilaktig skifte av batteri. Benytt samme batteritype eller en tilsvarende type anbefalt av apparatfabrikanten. Brukte batterier kasseres i henhold til fabrikantens instruksjoner. (Norwegian)



標準品以外の使用は、危険の元になります。交換品を使用する場合、製造者に指定されるものを使って下さい。製造者の指示に従って処理して下さい。(Japanese)

Copyright Information

No part of this manual, including the products and software described in it, may be reproduced, transmitted, transcribed, stored in a retrieval system, or translated into any language in any form or by any means, except documentation kept by the purchaser for backup purposes, without the express written permission of ASUSTeK COMPUTER INC. ("ASUS").

ASUS PROVIDES THIS MANUAL "AS IS" WITHOUT WARRANTY OF ANY KIND, EITHER EXPRESS OR IMPLIED, INCLUDING BUT NOT LIMITED TO THE IMPLIED WARRANTIES OR CONDITIONS OF MERCHANTABILITY OR FITNESS FOR A PARTICULAR PURPOSE. IN NO EVENT SHALL ASUS, ITS DIRECTORS, OFFICERS, EMPLOYEES OR AGENTS BE LIABLE FOR ANY INDIRECT, SPECIAL, INCIDENTAL, OR CONSEQUENTIAL DAMAGES (INCLUDING DAMAGES FOR LOSS OF PROFITS, LOSS OF BUSINESS, LOSS OF USE OR DATA, INTERRUPTION OF BUSINESS AND THE LIKE), EVEN IF ASUS HAS BEEN ADVISED OF THE POSSIBILITY OF SUCH DAMAGES ARISING FROM ANY DEFECT OR ERROR IN THIS MANUAL OR PRODUCT.

Products and corporate names appearing in this manual may or may not be registered trademarks or copyrights of their respective companies, and are used only for identification or explanation and to the owners' benefit, without intent to infringe.

SPECIFICATIONS AND INFORMATION CONTAINED IN THIS MANUAL ARE FURNISHED FOR INFORMATIONAL USE ONLY, AND ARE SUBJECT TO CHANGE AT ANY TIME WITHOUT NOTICE, AND SHOULD NOT BE CONSTRUED AS A COMMITMENT BY ASUS. ASUS ASSUMES NO RESPONSIBILITY OR LIABILITY FOR ANY ERRORS OR INACCURACIES THAT MAY APPEAR IN THIS MANUAL, INCLUDING THE PRODUCTS AND SOFTWARE DESCRIBED IN IT.

Copyright © 2008 ASUSTeK COMPUTER INC. All Rights Reserved.

Limitation of Liability

Circumstances may arise where because of a default on ASUS' part or other liability, you are entitled to recover damages from ASUS. In each such instance, regardless of the basis on which you are entitled to claim damages from ASUS, ASUS is liable for no more than damages for bodily injury (including death) and damage to real property and tangible personal property; or any other actual and direct damages resulted from omission or failure of performing legal duties under this Warranty Statement, up to the listed contract price of each product.

ASUS will only be responsible for or indemnify you for loss, damages or claims based in contract, tort or infringement under this Warranty Statement.

This limit also applies to ASUS' suppliers and its reseller. It is the maximum for which ASUS, its suppliers, and your reseller are collectively responsible.

UNDER NO CIRCUMSTANCES IS ASUS LIABLE FOR ANY OF THE FOLLOWING: (1) THIRD-PARTY CLAIMS AGAINST YOU FOR DAMAGES; (2) LOSS OF, OR DAMAGE TO, YOUR RECORDS OR DATA; OR (3) SPECIAL, INCIDENTAL, OR INDIRECT DAMAGES OR FOR ANY ECONOMIC CONSEQUENTIAL DAMAGES (INCLUDING LOST PROFITS OR SAVINGS), EVEN IF ASUS, ITS SUPPLIERS OR YOUR RESELLER IS INFORMED OF THEIR POSSIBILITY.

Service and Support

Visit our multi-language web site at <http://support.asus.com>

