

User's Guide

TRENDNET[®]



Micro Bluetooth[®] USB Adapter

TBW-106UB / TBW-107UB

Table of Contents

Table of Contents	2	Remote Computer	13
Product Overview	3	Bluetooth Modem	13
Package Contents	3	Bluetooth Access Point	13
Features	3	Bluetooth Object Transfer Wizard.....	14
Application Diagram	4	Office Outlook Extended Functions.....	14
Software Installation.....	4	Bluetooth Personal Area Network.....	14
Getting Started	7	Bluetooth Dial-Up Networking	15
Main Windows.....	7	Bluetooth Serial Port	15
My Services Icons.....	7	Bluetooth File Transfer	15
Remote Devices Icons.....	8	Bluetooth Object Push.....	16
Remote Devices' Services Icons.....	8	Bluetooth Print	16
Bluetooth Icon in Notification Area	9	Bluetooth Keyboard.....	17
Menus.....	9	Bluetooth Mouse	18
Using your Bluetooth Device	10	Bluetooth FAX.....	18
Search Remote Device Services.....	10	Bluetooth Basic Imaging Service.....	18
Bluetooth Security	10	Bluetooth Advanced Audio.....	18
Pairing with a Bluetooth device.....	10	Bluetooth Headset and Microphone	18
Un-pairing with a Bluetooth device	11	Bluetooth Phonebook.....	19
Connections	11	Bluetooth Messages	20
Manage My Service	11	Start BlueSoleil Bluetooth Low Energy functions	21
Disconnecting my service	11	Troubleshooting	23
Connecting Bluetooth Devices	12		
Bluetooth Headset.....	12		
Bluetooth Mobile Phone	12		
Bluetooth Printer	12		

Product Overview



TBW-106UB

TBW-107UB

Package Contents

- TBW-106UB or TBW-107UB
- Multi-Language Quick Installation Guide
- CD-ROM (Utility and User's Guide)

If any package contents are missing or damaged, please contact the retail store, online retailer, or reseller/distributor from which the product was purchased.

Features

TRENDnet's Micro Bluetooth® USB Adapter, networks a Windows® computer to Bluetooth® devices such as keyboards, headsets, and mobile devices. Slightly larger than the size of a penny, experience exceptional Bluetooth® connectivity for distances of up to 100 m / 330 ft on TBW-106UB or up to 10 m / 33 ft on TBW-107UB with stereo audio support.

Compact

Slightly larger than a penny, leave this compact adapter plugged into a computer when on the go

Transmission Speed

Up to 3 Mbps data transfer rate with Enhanced Data Rate (EDR) support

Energy Efficient

Bluetooth® Low Energy (BLE) protocol support

LED Indicator

LED indicator convey device status

Stereo Audio

Experience stereo audio with Advanced Audio Distribution Profile (A2DP) support

Intuitive Interface

Manage all of your Bluetooth® devices with the intuitive Windows® software

Operating Systems

Compatible with Windows® operating systems

Bluetooth Device Compatibility

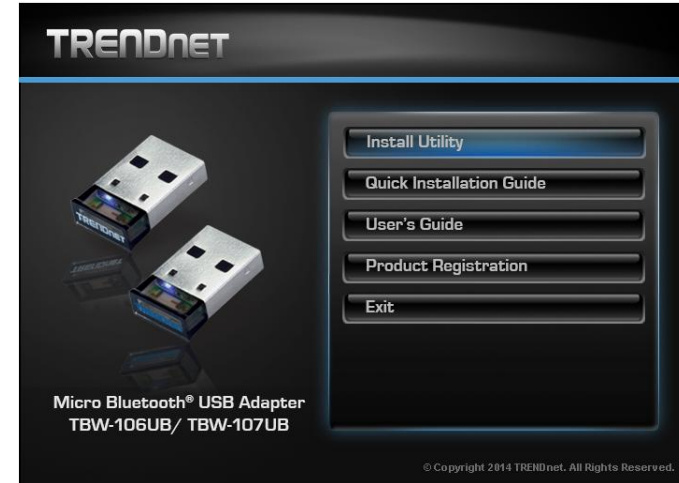
Backward compatible with legacy Bluetooth® devices

Application Diagram



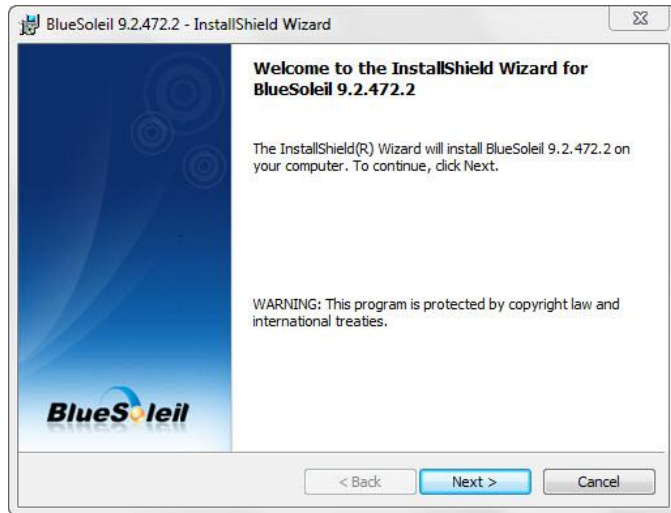
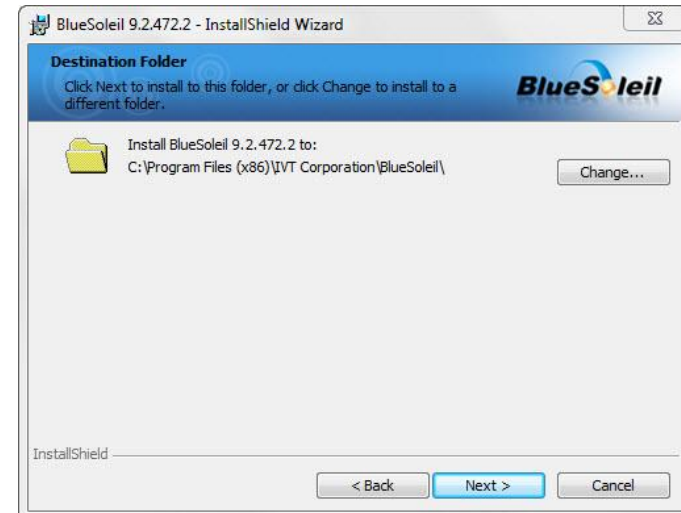
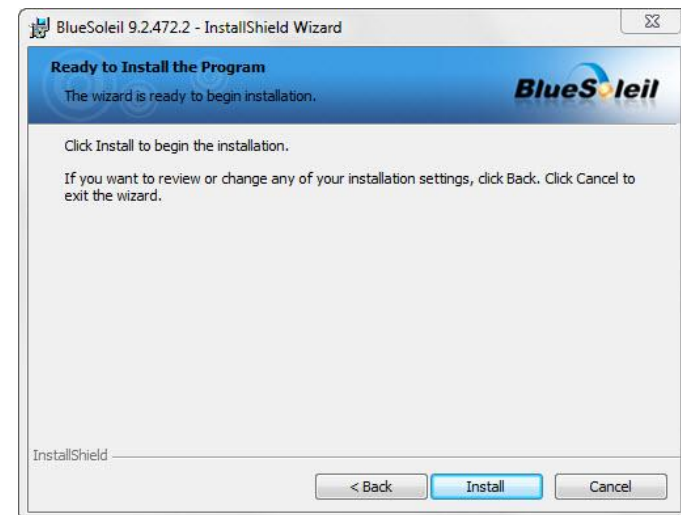
Software Installation

1. Insert the Utility & Driver CD-ROM into your CD-ROM drive.
2. Click **Install Utility**.

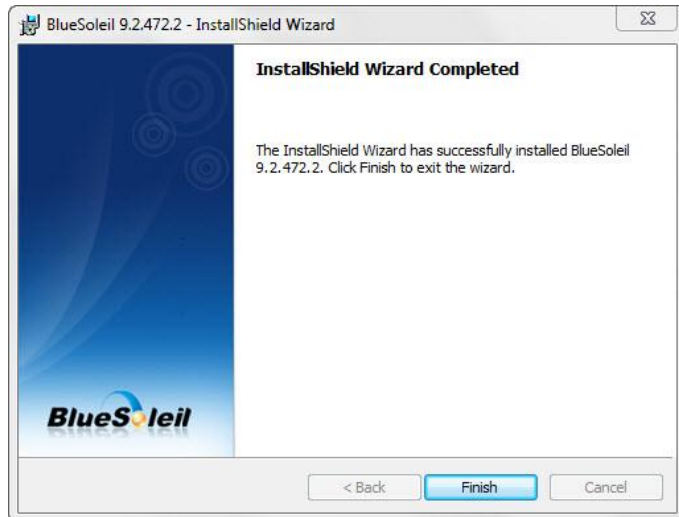


3. Select Language from the drop down menu. Click **OK**.

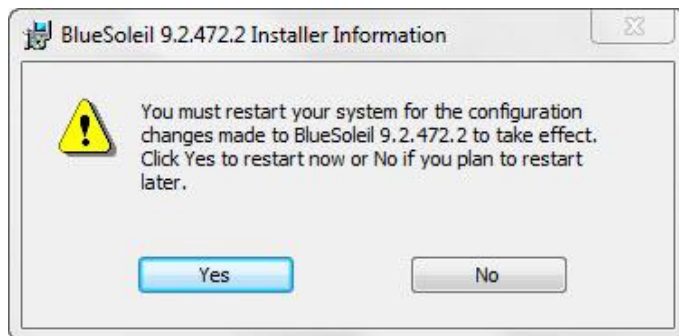


4. Click **Next**5. Accept the term in the license agreement, click **Next**.6. Select the destination folder, click **Next**.7. Click **Install**.

8. Click **Finish** to finish the installation wizard.



9. Click **Yes** to restart the computer. If you do not restart, some operations may be abnormal.



10. Connect TBW-106UB or TBW-107UB into the computer's USB port.



Getting Started

Main Windows



Operations

- To search for Bluetooth devices, double-click the **My Device** icon.
- To search for a Bluetooth device's services, double-click the Bluetooth device's icon.
- To connect to a Bluetooth device's service, click that device to select the device, and then double-click the device's service icon.





My Device Icon



Operations:

- Click the icon to select the local device and display its available services.
- Double-click the icon to search the Bluetooth devices.
- Right-click the icon to display a popup menu.

My Services Icons

Service	Icon
Bluetooth Personal Area Network	
Bluetooth Serial Port	
Bluetooth File Transfer	
Bluetooth Object Push	

Icon States:



- **Connected.** A remote device is connected with BlueSoleil under this service.
- **Idle.** The service is provided in the normal state.
- **Disabled.** The service is disabled.

Operations:

- Double-click the icon to view the status.
- Right-click the icon to display a popup menu so as to view the related operations.

Remote Devices Icons

Device	Icon
Headset	
Mobile Phone	
Mouse	
Keyboard	
Game bar	
Joystick	
PDA	
Video Device	
Access Point & Modem	
Desktop	
Laptop	

Printer	
Unknown Device	





Icon States:

- **Connected.** The device is connected with your computer.
- **Default.** The device is set as the default device. (This state is only available for headsets.)
- **Paired.** The device has been paired with your computer successfully.
- **Idle.** The device is working in the normal state.

Operations:

- Double-click the icon to search the remote Bluetooth device's services.
- Right-click the icon to display a popup menu to view related operations.

Remote Devices' Services Icons

Device	Icon
Bluetooth Personal Area Network	
Bluetooth Dial-Up Networking	
Bluetooth Serial Port	
Bluetooth File Transfer	

Bluetooth Object Push	
Bluetooth Print	
Bluetooth Human Interface Device	
Bluetooth Fax	
Bluetooth Basic Imaging Service	
Bluetooth Advanced Audio	
Bluetooth Headset and Microphone	
Bluetooth Phone Book	
Bluetooth Message	
Bluetooth Low Energy	

Icon States:

- **Connected.** The connection with the service has been established.
- **Mute.** The headset is set to be mute. (This state is only available for **Bluetooth Headset and Microphone** services.)
- **Idle.** The remote service is provided in the normal state.
- **Disabled.** The service is unavailable since Bluetooth is not working.

Operations:

- Double-click the icon to connect with a remote device service.

- Right-click the icon to display a popup menu so as to view the related operations.

Bluetooth Icon in Notification Area

There are three states of the Bluetooth icon in the notification area.



--- BlueSoleil starts up and Bluetooth function is active.



--- There are existing Bluetooth connections.



--- BlueSoleil starts up, but the Bluetooth function is not active.

Operations

- Double-click the Bluetooth icon to open the BlueSoleil default Windows.
- Click or right-click the Bluetooth icon to show popup menu.

Popup Menu

- **Display Classic View** --- Display BlueSoleil classic view window.
- **Explore Bluetooth Places** --- Open BlueSoleil with Windows explorer.
- **My Device Properties** --- View or change my Bluetooth device configurations.
- **Turn on/off Bluetooth** --- Turn on/off the Bluetooth function.

Menus

BlueSoleil classic view contains the following three menus;

Bluetooth

- **Search Devices** --- Search Bluetooth devices nearby.
- **My Device Properties** --- Display properties of your local computer that is running BlueSoleil.

- **Close**--- Close BlueSoleil classic view window.

View

- **Arrange Devices By** --- Arrange searched Bluetooth devices by the name, status or type.

Help

- **BlueSoleil Online Help** --- Display BlueSoleil help document.
- **FAQ** --- Access BlueSoleil website to check the FAQ.
- **Check for Update** --- Access BlueSoleil website to check if any update available.
- **Buy** --- Your Bluetooth adapter included free licensed software. The function was disable.
- **Active BlueSoleil:** Input the serial number to activate BlueSoleil through the Internet.
- **About BlueSoleil** --- Information about your version of BlueSoleil.

License Check

BlueSoleil checks the license in the Bluetooth adapter/module when it starts up. If the Bluetooth adapter/module has no license, BlueSoleil will run in evaluation mode (5MB data limit).

Check Upgrade

During starting up, BlueSoleil will check the upgrade version on www.bluesoleil.com . If any upgrade available, a tip message will pop up to prompt user the latest version information. User can visit the site directly by clicking the link in the message to download and evaluate the new version.

Tips:

- If you cannot find the Bluetooth icon in the notification area, check the following configuration: My Device Properties -> Accessibility -> Notification, and select **Show the Bluetooth icon in the notification area** check box.
- If the Bluetooth hardware is not found, the Bluetooth icon in the notification area will not be shown.
- To get the latest upgrade information, your computer must have the network connection to access the Internet.

Using your Bluetooth Device

To establish a Bluetooth connection, you need to find the remote Bluetooth device first.

1. Make the remote device **discoverable**.
2. Double-click the My Device icon, namely, the orange ball in the center of the window.
3. Bluetooth devices will appear around the orbit, if discoverable.

Tips:

- **Discoverable:** A Bluetooth device always has two statuses, discoverable or non-discoverable. It can only be searched in discoverable mode by other devices. The default mode of some mobile phones, headsets, mice, keyboards is non-discoverable and you have to manually switch the mode to discoverable. To learn how to make a device discoverable, check the information that came with your device.
- If you want to stop searching devices, double-click the My Device icon, or right-click it and select **Stop Searching** in the popup menu.

Search Remote Device Services

To communicate with a remote device for specified usage, you need obtain Bluetooth services supported by the device which has been found. To do so, follow one of the methods below:

- Double-click the remote device icon.
- Right-click the device icon and select **Search Services** in the popup menu.

Bluetooth Security

To protect and prevent data from unauthorized access, a Bluetooth passkey is required before communication. Once a remote device is paired with your computer by exchanging passkeys, passkeys will no longer be required for further connections between your computer and the device.

Pairing with a Bluetooth device

Right-click the device icon to show the popup menu. Select **Pair**. In the **Enter Bluetooth Passkey** dialog, enter the same passkey that you enter on the remote device. After a

device is successfully paired with your computer, the remote device icon will have a paired mark on it.

Un-pairing with a Bluetooth device

Right-click the device icon, and in the popup menu, select **Unpair**. The pairing relationship will be removed.

Tips:

- To pair with a Bluetooth keyboard, you should enter the passkey from the **Bluetooth keyboard** directly. See "Bluetooth Keyboard" for more details.
- If you don't want to be asked to pair with devices when establishing connection, you can change the secure connection setting as follows:
- If your computer initiates the connection: whether you input the Bluetooth passkey depends on the device you are connecting to. If its security level is low or it doesn't require a Bluetooth passkey, you don't need to enter it.
- If your computer accepts the connection: double-click **My Device** -> right-click any service -> Properties -> uncheck the **Secure Connection** check box.

Connections

Establishing a Connection

1. Search remote Bluetooth enabled devices.
2. Search services of the remote device.
3. Double-click any service icon to initiate the connection.
4. You might be prompted to enter a passkey to authenticate. Enter the same passkey on both sides, or only enter the specific one provided by the device manufacturer on your computer side.

Terminate a Connection

1. Right-click the service icon of the remote service, and select **Disconnect**.
2. Right-click the service icon of the remote device, and select **Disconnect xx service** to terminate the service you are connecting to.

Manage My Service

Starting a service

To receive connection from other devices via BlueSoleil, the service must be started. To do so, follow these two steps:

1. Right-click the **My Device** icon in the center of Classic View and select **Properties**.
2. Select Service tab, and make sure that the service is not disabled in **Status** option.

Stopping a service

1. Right-click the **My Device** icon in the center of Classic View and select **Properties**.
2. Select Service tab, and click Status, then select **Disable** or click **Disable** button in Status dialog.

Disconnecting my service

Once your computer accepts other device's connection of Bluetooth File Transfer, Object Push, Personal Area Network, or Serial Port, you can disconnect the connection on your computer side as follow:

1. Click the **My Device** icon.
2. Right-click the connected service icon, select **Status**, and click the **Disconnect** button.

Connecting Bluetooth Devices

Bluetooth Headset

With a Bluetooth headset, you can enjoy music, or chat with others online wirelessly.

- **Bluetooth Advanced Audio**
To listen to high-quality stereo music played in the computer.
- **Bluetooth Headset and Microphone**
To use the headset as mono earplug and microphone to chat with or make a VoIP call to others.

To see further operations about the headset, click the following headlines:



[Bluetooth Advanced Audio](#)



[Bluetooth Headset and Microphone](#)

Tips:

- Some Bluetooth headsets only support Bluetooth Headset and Microphone service.
- When the headset battery is low on power, it may disconnect automatically.

Bluetooth Mobile Phone

You can connect your Bluetooth mobile phone to the computer wirelessly.

- **Bluetooth File Transfer**
To transfer files to/from the shared folders in your mobile phone.
- **Bluetooth Object Push**
To exchange cards with or send files to your mobile phone.
- **Bluetooth Dial-Up Networking**
To dial-up to the Internet through your mobile phone via GPRS or 3G networks.
- **Bluetooth FAX**
To send a fax from your computer through your mobile phone.

To see further operations about the mobile phone, click the following headlines:



[Bluetooth File transfer](#)



[Bluetooth Object Push](#)



[Bluetooth Dial-Up Networking](#)



[Bluetooth FAX](#)

Tip: If you'd like to use BlueSoleil with Nokia PC Suite, please refer to Troubleshooting for further details.

Bluetooth Printer

With BlueSoleil, you can print files to a Bluetooth printer wirelessly.

- **Bluetooth Print**
To print files to a Bluetooth printer.
- **Bluetooth Object Push**
To print a file by sending data to the Bluetooth printer directly.

To see further operations about Printer, click the following headlines:



[Bluetooth Print](#)



[Bluetooth Object Push](#)

Remote Computer

With BlueSoleil, you can connect to other computers wirelessly.

- **Bluetooth Advanced Audio**
To listen to high-quality stereo music played in the remote computer.
- **Bluetooth Basic Imaging Service**
To send pictures to the remote computer.
- **Bluetooth Personal Area Network**
To form a Bluetooth TCP/IP network.
- **Bluetooth File Transfer**
To transfer files to/from the shared folders on the remote computer.
- **Bluetooth Object Push**
To transfer a business card or other data between your computer and your mobile phone.
- **Bluetooth Serial Port** To transfer data between computers.

To see further operations about the remote computer, click the following headlines:



[Bluetooth Advanced Audio](#)



[Bluetooth Basic Imaging Service](#)



[Bluetooth Personal Area Network](#)



[Bluetooth File transfer](#)



[Bluetooth Object Push](#)



[Bluetooth Serial Port](#)

Bluetooth Modem

With BlueSoleil, your computer can connect to the Internet via a Bluetooth modem.

- **Bluetooth Dial-Up Networking** Connect to the Internet via a Bluetooth modem.
 1. Make sure your Bluetooth modem is powered on and connects to the telephone line.
 2. Search for the Bluetooth modem and connect to its Bluetooth Dial-Up Networking service.
 3. A Bluetooth dial-up networking Modem driver will be installed on the first time connection.
 4. The Dial-up networking dialog pops up. Enter your correct ISP phone number and click the **Dial** button.
 5. Once the dial-up connection is established, you can browse the Internet on your computer.

Bluetooth Access Point

With BlueSoleil, you can access the local area network via a Bluetooth access point.

- **Bluetooth Personal Area Network** Join in a local area network via a Bluetooth access point.
 1. Make sure your Bluetooth access point is powered on and connected to the local area network.
 2. Search for your Bluetooth access point and connect to its Bluetooth Personal Area Network service. You might be prompted to enter the passkey of your

access point. See the user manual that came with your access point for the passkey.

3. After connected, an IP address will be assigned to your computer.
4. You can access the local area network now.

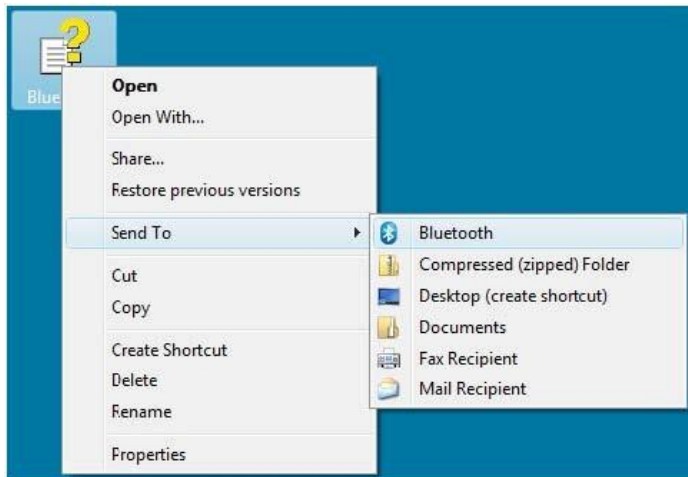
Tip:

- If you cannot access the local area network after connection, please make sure the firewalls on your computers are shut down and you have the authority to access the Bluetooth access point.

Bluetooth Object Transfer Wizard

Users can send files to mobile phones, remote computers and other Bluetooth devices via Send To menu.

1. Select a file or several files. Right-click the files and select **Send To -> Bluetooth** to open the **Bluetooth Object Transfer Wizard**.



2. Choose a remote device you want to send files to.
3. Input a passkey if required.
4. After connection setup, transfer the files.

Tips:

- Sending multi files at the same time is supported. Folders cannot be sent.
- The **Send to** function works differently in Windows XP and Windows Vista. Bluetooth Object Transfer Wizard will popup directly after selecting **Send To -> Bluetooth** in Windows Vista; In Windows XP, there are submenus including **Other Devices** and history remote devices list in **Send To -> Bluetooth**. If you choose one of the history remote devices, the files will be sent to it directly; if you choose **Other Devices**, the **Bluetooth Object Transfer** wizard will appear.

Office Outlook Extended Functions

- BlueSoleil has an add-in for MS Office Outlook. You can set your default business card, send contacts and mails to remote Bluetooth devices in Outlook directly.
- Set a business card as your default card in Outlook.
- Choose contacts, mails, notes or calendar in Outlook to send to a remote device.
- Select a contact in your Outlook contacts. Select **File -> Set as my default Business Card** menu to set as your computer's default business card.
- Select a contact, a mail, a note or a calendar. Select **File -> Send to Bluetooth Device**. Select a remote device to send the chosen information.

Bluetooth Personal Area Network

This service enables users to form a Bluetooth TCP/IP network to remote computers.

1. Search for the remote computer and connect to its Bluetooth Personal Area Network service.
2. The Bluetooth IP address of your local or remote computers will be assigned and shown as the information tip.
3. You can access files and folders shared by the remote computers Bluetooth Personal Area Network address.

Tips:

- To learn more about the Bluetooth Personal Area Network service and configuration BlueSoleil provides, please refer to My Services Properties.

- If you can not access the other side's network after the connection is established, please make sure that firewalls on both sides are shut off and you have the authority to access the remote computer.
- After connecting the Bluetooth Personal Area Network with remote computer(s), BlueSoleil supports network games.

Bluetooth Dial-Up Networking

This service is enable users to dial-up to the Internet via a Bluetooth mobile phone.

1. Search for your mobile phone and connect to its Bluetooth Dial-Up Networking service.
2. A Bluetooth dial-up networking Modem driver will be installed on the first time connection.
3. The Dial-Up Networking dialog pops up. Enter the right ISP phone number and click the **Dial** button to connect to your ISP.
4. Once the dial-up connection is established, you can browse the Internet on your computer.



Tip:

- To dial-up via GPRS or 3G, you need to configure the GPRS settings in your phone. Please contact your phone manufacturer or mobile phone provider for more details.

Bluetooth Serial Port

This service enables users to transfer data between computers.

1. Search for the remote computer and connect to its Bluetooth Serial Port service.
2. A new serial port will be installed the first time.
3. An information balloon will show you the outgoing serial port number.
4. Once connected, you can transfer data via the serial port.

Tip:

- If you open an installed serial port, BlueSoleil will establish the connection to the remote computer automatically.

Bluetooth File Transfer

This service enables users to access folders shared by a remote computer.

1. Search for the remote computer and connect to it using the Bluetooth File Transfer service.
2. The computer's folder is displayed in your explorer window.
3. You can browse the folder and copy/paste the files.

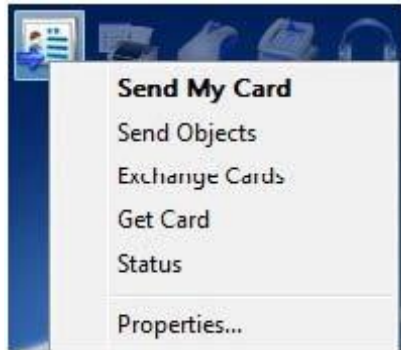
Tips:

- The Bluetooth connection is terminated after the file transfer operation.
- To refresh the folder contents, right-click the blank space in the shared folder window and select **Update current folder** in the popup menu.
- Some computers do not accept files copied to its folder via Bluetooth. Please refer to their user manuals.
- Renaming a remote shared file or folder is not supported in BlueSoleil.

Bluetooth Object Push

This service enables users to exchange cards with a remote computer or send files to the remote computer.

1. Search for your remote computer and search its services.
2. Right-click Bluetooth Object Push service of your remote computer.



3. Select **Send My Card** in the popup menu to send your default name card to the remote computer.
4. Select **Send Objects**, select a file in the file dialog and send to your remote computer.
5. Select **Exchange Cards** to exchange your default name card with the remote computer. The default card of the computer is also sent to your computer, stored in the user's incoming folder and imported to Outlook.
6. Select **Get Card** to retrieve the default name card of the remote computer.

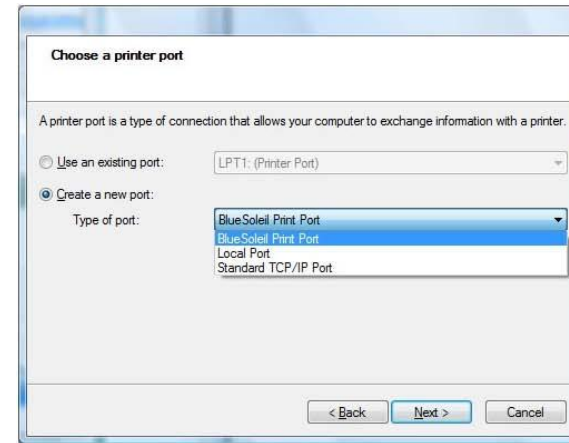
Tips:

- Your default name card on the computer is a vCard in a .vcf file which can be created by exporting from a contact in Outlook. See My Services Properties for more details.
- To send a file to a remote computer directly, you can right-click the file and select **Send to -> Bluetooth**. See Bluetooth Object Transfer wizard for more details.

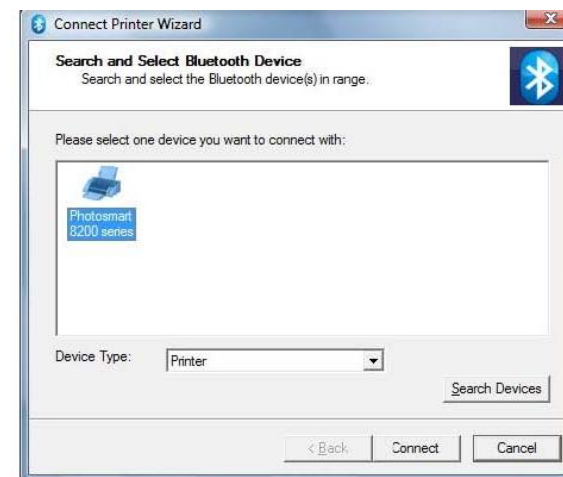
Bluetooth Print

This service enables users to print files to a Bluetooth printer wirelessly.

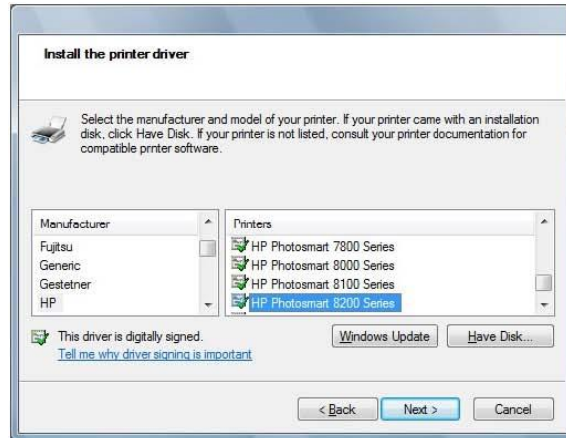
1. Search for the Bluetooth printer and double-click the Bluetooth Print service icon to start the **add printer** wizard.
2. Choose **Create a new port** to create a BlueSoleil Printer Port.



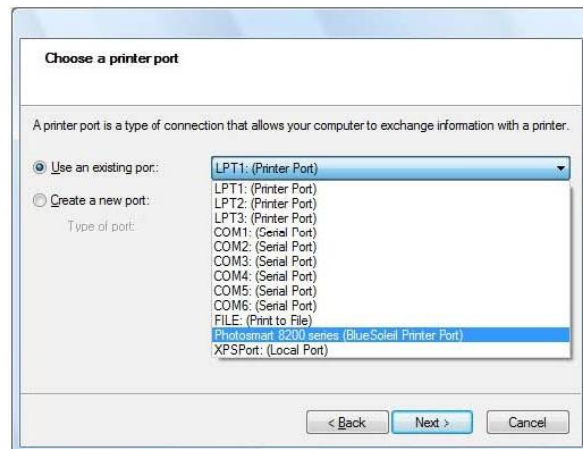
3. Install and connect the printer serial port in **Connect Printer** wizard.



- Choose the driver for your printer in **Install the printer driver** wizard.



- The printer is added.
- You can print files to the new Bluetooth printer now. BlueSoleil will connect to the printer automatically when the printer port is opened.



Tips:

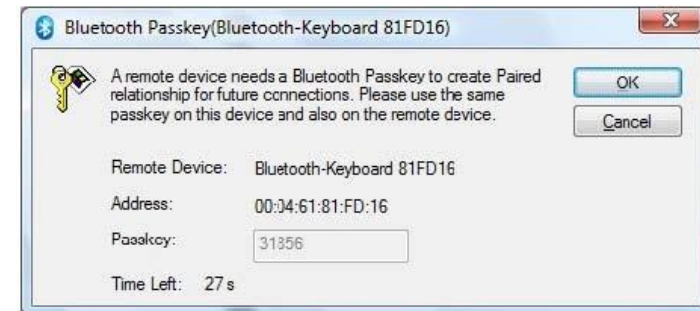
- Only Windows administrators are allowed to add a Bluetooth printer.

- If the BlueSoleil Print Port has been added, you can choose it for your printer in the **Use an existing port** list.
- Different types of Bluetooth printers may have different operating methods, please read your printers' user manuals for more details.

Bluetooth Keyboard

With BlueSoleil, a Bluetooth keyboard can be connected to your computer as a Human Interface Device (HID).

- Connect the Bluetooth keyboard to a computer as an HID device.
- Search for your Bluetooth keyboard and connect to it.
- A passkey may be needed. Please enter the same passkey shown in the BlueSoleil pairing dialog on **Bluetooth keyboard** and press **Enter** key to pair.



- The Bluetooth keyboard driver will be installed on the first time connection. After the driver installation, the Bluetooth keyboard can be used as the computer-HID device.
- The Bluetooth keyboard can be reconnected automatically, once you type any key on the keyboard.

Tips:

- To disconnect the keyboard permanently, right-click the Bluetooth keyboard icon and select **Unplug** in the popup menu.
- The connection may not be set up if the Bluetooth keyboard battery is low on power.

Bluetooth Mouse

With BlueSoleil, a Bluetooth mouse can be connected to your computer as a Human Interface Device (HID).

1. Connect the Bluetooth mouse to a computer as an HID device.
2. Search for your Bluetooth mouse and connect to it.
3. A passkey may be needed. Please enter the default passkey of the mouse on BlueSoleil. See the Bluetooth mouse's user manual for its default passkey.
4. The Bluetooth mouse driver will be installed on the first time connection. After the driver installation, the Bluetooth mouse can be used as the computer-HID device.
5. The Bluetooth mouse can be reconnected automatically, once you click the mouse button.

Tips:

- To disconnect the mouse permanently, right-click the Bluetooth mouse icon and select **Unplug** in the popup menu.
- The connection may not be set up if the Bluetooth mouse battery is low on power.

Bluetooth FAX

This service enables users to send a fax via a Bluetooth mobile phone.

1. Install a fax printer driver on your computer from the **Control Panel** -> **Printer**.
2. Search for your mobile phone and connected to its **Bluetooth FAX** service.
3. A Bluetooth fax Modem driver will be installed at the first time connection.
4. Choose a file you want to send via fax. Right-click the file and select Print and print it to the fax printer.

Tips:

- Please refer to Windows online help for more information about fax printer.
- You can also send fax using fax software such as Microsoft Fax.

Bluetooth Basic Imaging Service

1. Search for the remote computer
2. Double-click the **Bluetooth Basic Imaging Service** icon and select a picture to send it to the remote computer. You might be prompted to enter the passkey to authenticate before the connection. Enter the same number on both computers sides.

Tips:

- The pictures sent to the remote computer are saved at C:\Users\{(User name)}\Documents\Bluetooth\BIP\DCIM by default. You can change the directory in the Bluetooth Imaging Service properties in the remote computer side.

Bluetooth Advanced Audio

This service enables users to listen to high-quality stereo music played in the computer.

1. Make your headset discoverable.
2. Search for your headset and connect to the Bluetooth Advanced Audio service.
3. Play music on computer.

Tip:

- You can control the player remotely with the button on your headset that supports Audio/Video Remote Control Profile (AVRCP), such as play, pause, stop, previous, next, volume. Currently, Windows Media Player, RealPlayer, Winamp are supported. For more players, visit www.bluesoleil.com.

Bluetooth Headset and Microphone

1. This service enables users to enjoy the same functions as a wire earplug or microphone.
2. Place your headset in discoverable mode.
3. Search for your headset and connect to it with the Bluetooth Headset and Microphone service.
4. You can make a VoIP call to chat with others.

- Right-click the Bluetooth Headset and Microphone icon and select **Mute On** to mute the chat. Right-click and choose **Mute Off** to resume.

Tips:

- It is recommended not to listen to music with the Bluetooth Headset and Microphone service, this is only telephony sound quality.
- BlueSoleil sets the last connected headset as the default headset automatically. When there is an incoming VoIP call, the default headset will be connected automatically.

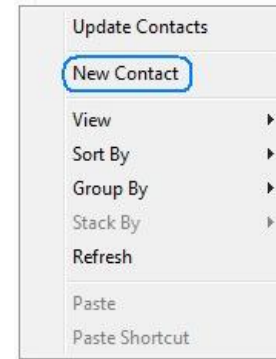
Bluetooth Phonebook

This service enables users to view the mobile phone's contacts, backup, export, edit them and to send a message to the contacts.

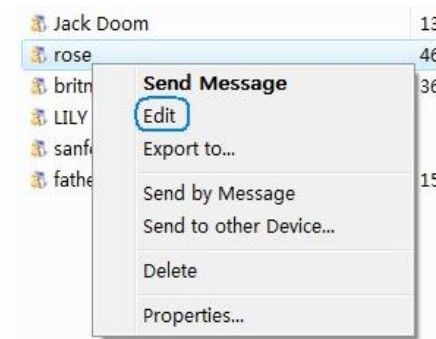
- Search for your mobile phone and double-click it to search available services.
- Double-click the Bluetooth Phonebook icon. The contacts in your mobile phone will be shown in the explorer window.
- Double-click a contact to send him/her a message.
- Backup/Recover your contacts: right-click the Bluetooth Phonebook icon and select Backup Contacts or Recover Contacts in the popup menu. A file named "contacts_(Bluetooth mobile phone name)_(date of backing up).dat" will be saved after clicking Backup Contacts. You can undo the changes for your contacts through recovering.



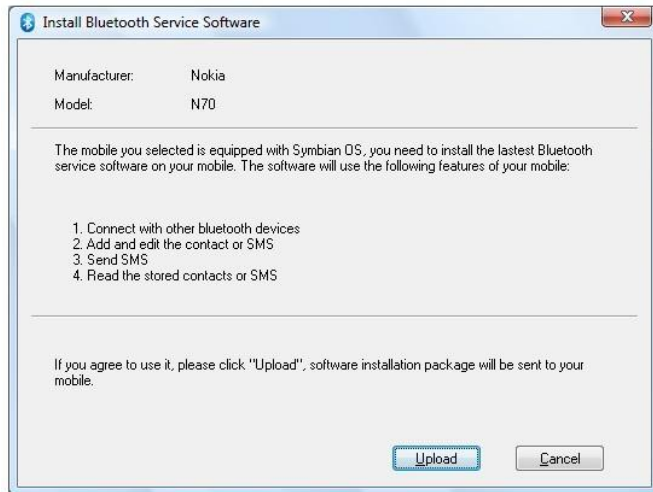
- Create a new contact: right-click the blank of the window and select **New Contact**.



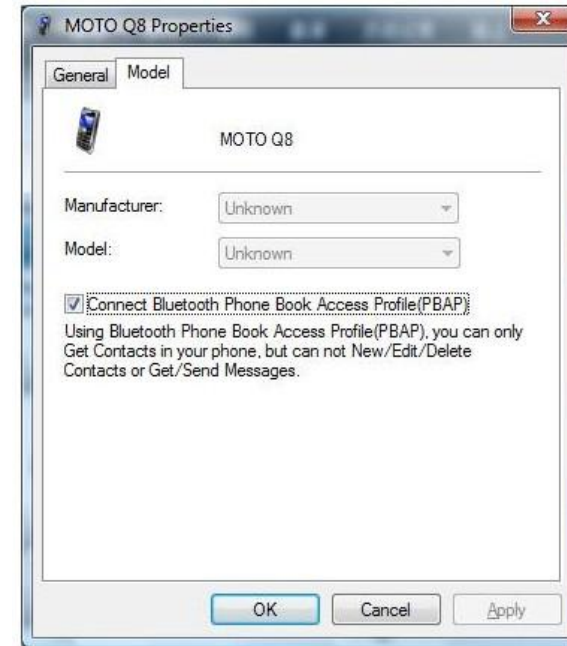
- Edit a contact: right-click a contact and select **Edit**.

**Tips:**

- For the phones with Symbian and Windows Mobile system, for example, some Nokia mobile phones, BlueSoleil will send an application to your mobile phone via a message before the first connection to these phones. You should choose your phone's model, 'Upload' the application and install it at your phone.



- Right-click the mobile phone and select **Properties**. In the **Model** tab you can choose your mobile phone type from the support list. If your mobile phone is not in the support list but supports PBAP function, you can check **Connect Bluetooth Phone Book Access Profile (PBAP)** option to acquire the contact list in your mobile phone. However, in this case you can only browse contacts in your phone and **backup** the phone book, but cannot **New/Edit/Delete** contacts, or **Get/Send** messages.

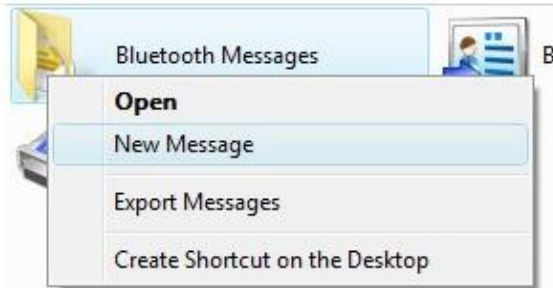


- At the first time when displaying the contacts, the Edit and Delete items in the contact's right-clicking menu are unavailable. Please right-click the blank of the window and select **Update Contacts**.
- It is also strongly recommended that backup all your contacts in your phone and SIM card before you select **Recover Contacts**, for the recovering process will delete the contacts first.

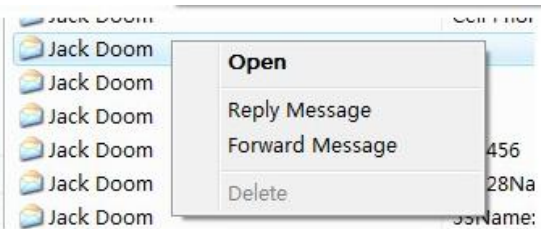
Bluetooth Messages

This service enables users to view messages, reply, forward them and to export the messages.

- Search for your mobile phone and double-click it to search available services.
- Double-click the **Bluetooth Messages** icon. The messages in the mobile phone's inbox and sent folder will be shown in the explorer window.
- Create a new message: right-click the **Bluetooth Messages** icon and select **New Message**.

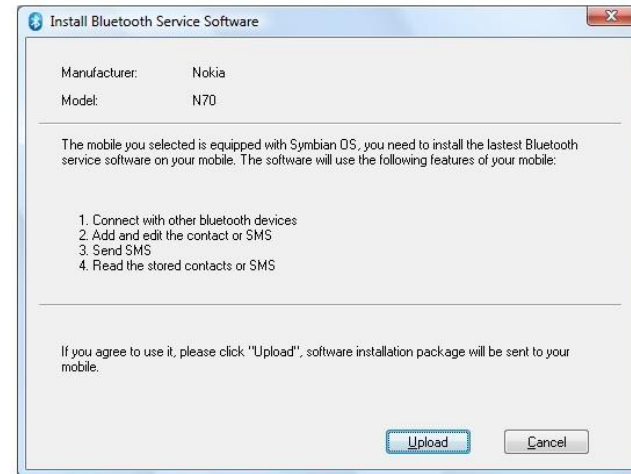


- 4. Reply/forward a message: right-click a message and select **Reply message** or **Forward message**.



Tips:

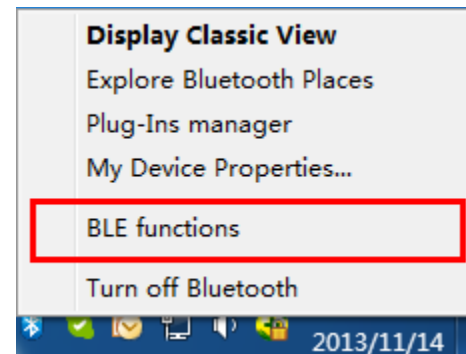
- For the phones with Symbian and Windows Mobile system, for example, some Nokia mobile phones, BlueSoleil will send an application to your mobile phone via a message before the first connection to these phones. You should choose your phone's model, 'Upload' the application and install it at your phone.



- At the first time when displaying messages, the Delete item in the message's right-clicking menu are unavailable. Please right-click the blank of the window and select **Update Messages**.

Start BlueSoleil Bluetooth Low Energy functions

1. First of all, you have to insert a dongle that supports BT4.0.
2. Please select "BLE functions" option to open BlueSoleil LE UI.



3. Please make your BT4.0 devices discoverable, and click "Add a device" search and connect them.
4. Currently BlueSoleil can support **Find Me, Proximity**(these two belong to Alert), and **Health Thermometer, Heart Rate, Blood pressure, Glucose**(these four belong to Health) and **HID OVER GATT Profile**(this one belongs to Others).



Troubleshooting

1. Why is the Bluetooth icon in Windows tray icon area gray when BlueSoleil starts up?

A: Your Bluetooth radio is not supported by your computer or BlueSoleil, or, Bluetooth is turned off.

2. What does "The Bluetooth device does not have proper license key. Bluetooth cannot start." mean?

A: Your Bluetooth radio does not contain a valid license key authorized by IVT Corporation, so BlueSoleil will stop working. For more details, please check BlueSoleil online support.

3. What is Bluetooth passkey?

A: Bluetooth passkey is used in the authentication procedure for Bluetooth security purpose. When a remote device connects to your computer, it has to offer the same Bluetooth passkey as that you input on your computer. Only when the Bluetooth passkeys from both sides are the same, connection can be setup. A paired relationship is created after a successful pairing, and the passkey is no longer required for later connection. The paired relationship can be removed by any side.

4. What can I do if the connection has failed?

A: If the connection fails, the remote device may be in non-discoverable mode. Please make sure the remote device is discoverable and try to connect again.

5. Why may I not send files to my device?

A: Please make sure that your device supports File Transfer or Object Push function, and it has enough space. Some devices accept limited types of files, such as pictures and music only. Please also make sure that your file name does not contain characters that cannot be recognized by your device.

6. Why I cannot add another Bluetooth printer with the same name?

A: BlueSoleil doesn't support multiple printers with the same name. In this case, the Windows OS cannot tell which printer is the right one. Please rename one of the printers.

7. Does BlueSoleil support Windows multi-session?

A: Yes, BlueSoleil supports Windows multi-session. Different users logged in to Windows can all access and use the Bluetooth function.

8. How do I use Nokia's PC Suite with BlueSoleil?

A: Please first make sure the version of your Nokia PC Suite is 6.5 or later. Here's how:

- a) Start PC Suite, and select the connection type in **Connection Manager** to be Bluetooth (**IVT BlueSoleil**).
- b) PC Suite connection wizard will guide you to find your mobile phone, then you can connect your phone to PC Suite via BlueSoleil.
- c) Once connected, you can back up phone contents, synchronize contacts, calendar items, notes, write, send and print text messages from your PC, install Symbian and JavaTM applications from a PC to a phone, and etc.

Federal Communication Commission Interference Statement

This device complies with Part 15 of the FCC Rules. Operation is subject to the following two conditions: (1) This device may not cause harmful interference, and (2) this device must accept any interference received, including interference that may cause undesired operation.

This equipment has been tested and found to comply with the limits for a Class B digital device, pursuant to Part 15 of the FCC Rules. These limits are designed to provide reasonable protection against harmful interference in a residential installation. This equipment generates, uses and can radiate radio frequency energy and, if not installed and used in accordance with the instructions, may cause harmful interference to radio communications. However, there is no guarantee that interference will not occur in a particular installation. If this equipment does cause harmful interference to radio or television reception, which can be determined by turning the equipment off and on, the user is encouraged to try to correct the interference by one of the following measures:

- Reorient or relocate the receiving antenna.
- Increase the separation between the equipment and receiver.
- Connect the equipment into an outlet on a circuit different from that to which the receiver is connected.
- Consult the dealer or an experienced radio/TV technician for help.

FCC Caution: Any changes or modifications not expressly approved by the party responsible for compliance could void the user's authority to operate this equipment.

Operations in the 5.15-5.25GHz band are restricted to indoor usage only.

This transmitter must not be co-located or operating in conjunction with any other antenna or transmitter.

IMPORTANT NOTE:

FCC Radiation Exposure Statement:

This equipment complies with FCC radiation exposure limits set forth for an uncontrolled environment. This equipment should be installed and operated with minimum distance 20cm between the radiator & your body. This transmitter must not be co-located or operating in conjunction with any other antenna or transmitter. This product will be used for indoor operations.



RoHS

This product is RoHS compliant.



Europe – EU Declaration of Conformity

This product is herewith confirmed to comply with the Directive of 1999/5/EC and 2006/95/EC.



EN 60950-1: 2006 + A11 : 2009 + A1 : 2010 + A12: 2011 + A2: 2013

Safety of Information Technology Equipment

EN 300 328 V1.8.1 (2012-04)

Electromagnetic compatibility and Radio spectrum Matters (ERM); Wideband transmission systems; Data transmission equipment operating in the 2,4 GHz ISM band and using wide band modulation techniques; Harmonized EN covering essential requirements under article 3.2 of the R&TTE Directive

EN 301 489-1 V1.9.2 (2011-09)

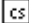


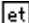


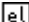

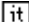
Electromagnetic compatibility and Radio Spectrum Matters (ERM); ElectroMagnetic Compatibility (EMC) standard for radio equipment and services; Part 1: Common technical requirements

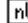


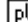
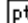
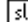

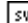
EN 301 489-17 V2.2.1 (2012-09)

Electromagnetic compatibility and Radio spectrum Matters (ERM); ElectroMagnetic Compatibility (EMC) standard for radio equipment and services; Part 17: Specific conditions for 2,4 GHz wideband transmission systems and 5 GHz high performance RLAN equipment

EN 62311 : 2008

This device is a 2.4 GHz wideband transmission system (transceiver), intended for use in all EU member states and EFTA countries, except in France and Italy where restrictive use applies. In Italy the end-user should apply for a license at the national spectrum authorities in order to obtain authorization to use the device for setting up outdoor radio links and/or for supplying public access to telecommunications and/or network services. This device may not be used for setting up outdoor radio links in France and in some areas the RF output power may be limited to 10 mW EIRP in the frequency range of 2454 – 2483.5 MHz. For detailed information the end-user should contact the national spectrum authority in France.

 Česky [Czech]	TRENDnet tímto prohlašuje, že tento TBW-106UB / TBW-107UB je ve shodě se základními požadavky a dalšími příslušnými ustanoveními směrnice 1999/5/ES a 2006/95/ES.
 Dansk [Danish]	Undertegnede TRENDnet erklærer herved, at følgende udstyr TBW-106UB / TBW-107UB overholder de væsentlige krav og øvrige relevante krav i direktiv 1999/5/EF og 2006/95/EF.
 Deutsch [German]	Hiermit erkläre TRENDnet, dass sich das Gerät TBW-106UB / TBW-107UB B in Übereinstimmung mit den grundlegenden Anforderungen und den übrigen einschlägigen Bestimmungen der Richtlinie 1999/5/EG und 2006/95/EG befindet.
 Eesti [Estonian]	Käesolevaga kinnitab TRENDnet seadme TBW-106UB / TBW-107UB vastavust direktiivi 1999/5/EÜ ja 2006/95/EÜ põhinõuetele ja nimetatud direktiivist tulenevatele teistele asjakohastele sätetele.
 English	Hereby, TRENDnet, declares that this TBW-106UB / TBW-107UB is in compliance with the essential requirements and other relevant provisions of Directive 1999/5/EC and 2006/95/EC.
 Español [Spanish]	Por medio de la presente TRENDnet declara que el TBW-106UB / TBW-107UB cumple con los requisitos esenciales y cualesquiera otras disposiciones aplicables o exigibles de la Directiva 1999/5/CE, y 2006/95/CE.
 Ελληνική [Greek]	ΜΕ ΤΗΝ ΠΑΡΟΥΣΑ ΤΟ ΤΡΕΝΔΝΕΤ ΔΗΛΩΝΕΙ ΟΤΙ ΤΟ ΤΒΩ-106UB / ΤΒΩ-107UB ΣΥΜΜΟΡΦΩΝΕΤΑΙ ΠΡΟΣ ΤΙΣ ΟΥΣΙΩΔΕΙΣ ΑΠΑΙΤΗΣΕΙΣ ΚΑΙ ΤΙΣ ΛΟΙΠΕΣ ΣΧΕΤΙΚΕΣ ΔΙΑΤΑΞΕΙΣ ΤΗΣ ΟΔΗΓΙΑΣ 1999/5/ΕΚ, 2006/95/ΕΚ ΚΑΙ.
 Français [French]	Par la présente TRENDnet déclare que l'appareil TBW-106UB / TBW-107UB est conforme aux exigences essentielles et aux autres dispositions pertinentes de la directive 1999/5/CE, 2006/95/CE et.
 Italiano [Italian]	Con la presente TRENDnet dichiara che questo TBW-106UB / TBW-107UB è conforme ai requisiti essenziali ed alle altre disposizioni pertinenti stabilite dalla direttiva 1999/5/CE e 2006/95/CE.
Latviski [Latvian]	Ar šo TRENDnet deklarē, ka TBW-106UB / TBW-107UB atbilst Direktīvas 1999/5/EK, un 2006/95/EK būtiskajām prasībām un citiem ar to saistītajiem noteikumiem.
Lietuvių [Lithuanian]	Šiuo TRENDnet deklaruoją, kad šis TBW-106UB / TBW-107UB atitinka esminius reikalavimus ir kitas 1999/5/EB ir 2006/95/EB Direktyvos nuostatas.

 Nederlands [Dutch]	Hierbij verklaart TRENDnet dat het toestel TBW-106UB / TBW-107UB in overeenstemming is met de essentiële eisen en de andere relevante bepalingen van richtlijn 1999/5/EG, en 2006/95/EG.
 Malti [Maltese]	Hawnhekk, TRENDnet, jiddikjara li dan TBW-106UB / TBW-107UB jikkonforma mal-htigijiet essenzjali u ma provvedimenti oħrajn relevanti li hemm fid-Dirrettiva 1999/5/KE u 2006/95/KE.
 Magyar [Hungarian]	Alulírott, TRENDnet nyilatkozom, hogy a TBW-106UB / TBW-107UB megfelel a vonatkozó alapvető követelményeknek és az 1999/5/EK irányelv, a 2006/95/EK irányelv egyéb előírásainak.
 Polski [Polish]	Niniejszym TRENDnet oświadcza, że TBW-106UB / TBW-107UB jest zgodny z zasadniczymi wymogami oraz pozostałymi stosownymi postanowieniami Dyrektywy 1999/5/WE i 2006/95/WE.
 Português [Portuguese]	TRENDnet declara que este TBW-106UB / TBW-107UB está conforme com os requisitos essenciais e outras disposições da Directiva 1999/5/CE e 2006/95/CE.
 Slovensko [Slovenian]	TRENDnet izjavlja, da je ta TBW-106UB / TBW-107UB v skladu z bistvenimi zahtevami in ostalimi relevantnimi določili direktive 1999/5/ES in 2006/95/ES.
Slovensky [Slovak]	TRENDnet tvrdí, že táto TBW-106UB / TBW-107UB spĺňa základné požiadavky a všetky príslušné ustanovenia Smernice 1999/5/ES a 2006/95/ES.
 Suomi [Finnish]	TRENDnet vakuuttaa täten että TBW-106UB / TBW-107UB tyyppinen laite on direktiivin 1999/5/EY ja 2006/95/EY oleellisten vaatimusten ja sitä koskevien direktiivin muiden ehtojen mukainen.
 Svenska [Swedish]	Härmed intygar TRENDnet att denna TBW-106UB / TBW-107UB står i överensstämmelse med de väsentliga egenskapskrav och övriga relevanta bestämmelser som framgår av direktiv 1999/5/EG och 2006/95/EG.

Limited Warranty

TRENDnet warrants its products against defects in material and workmanship, under normal use and service, for the following lengths of time from the date of purchase.

TBW-106UB / TBW-107UB – 3 Years Warranty

AC/DC Power Adapter, Cooling Fan, and Power Supply carry 1 year warranty.

If a product does not operate as warranted during the applicable warranty period, TRENDnet shall reserve the right, at its expense, to repair or replace the defective product or part and deliver an equivalent product or part to the customer. The repair/replacement unit's warranty continues from the original date of purchase. All products that are replaced become the property of TRENDnet. Replacement products may be new or reconditioned. TRENDnet does not issue refunds or credit. Please contact the point-of-purchase for their return policies.

TRENDnet shall not be responsible for any software, firmware, information, or memory data of customer contained in, stored on, or integrated with any products returned to TRENDnet pursuant to any warranty.

There are no user serviceable parts inside the product. Do not remove or attempt to service the product by any unauthorized service center. This warranty is voided if (i) the product has been modified or repaired by any unauthorized service center, (ii) the product was subject to accident, abuse, or improper use (iii) the product was subject to conditions more severe than those specified in the manual.

Warranty service may be obtained by contacting TRENDnet within the applicable warranty period and providing a copy of the dated proof of the purchase. Upon proper submission of required documentation a Return Material Authorization (RMA) number will be issued. An RMA number is required in order to initiate warranty service support for all TRENDnet products. Products that are sent to TRENDnet for RMA service must have the RMA number marked on the outside of return packages and sent to TRENDnet prepaid, insured and packaged appropriately for safe shipment. Customers shipping from outside of the USA and Canada are responsible for return shipping fees. Customers shipping from outside of the USA are responsible for custom charges, including but not limited to, duty, tax, and other fees.

WARRANTIES EXCLUSIVE: IF THE TRENDNET PRODUCT DOES NOT OPERATE AS WARRANTED ABOVE, THE CUSTOMER'S SOLE REMEDY SHALL BE, AT TRENDNET'S OPTION, REPAIR OR REPLACE. THE FOREGOING WARRANTIES AND REMEDIES ARE EXCLUSIVE AND ARE IN LIEU OF ALL OTHER WARRANTIES, EXPRESSED OR IMPLIED, EITHER IN FACT OR BY OPERATION OF LAW, STATUTORY OR OTHERWISE, INCLUDING

WARRANTIES OF MERCHANTABILITY AND FITNESS FOR A PARTICULAR PURPOSE. TRENDNET NEITHER ASSUMES NOR AUTHORIZES ANY OTHER PERSON TO ASSUME FOR IT ANY OTHER LIABILITY IN CONNECTION WITH THE SALE, INSTALLATION MAINTENANCE OR USE OF TRENDNET'S PRODUCTS.

TRENDNET SHALL NOT BE LIABLE UNDER THIS WARRANTY IF ITS TESTING AND EXAMINATION DISCLOSE THAT THE ALLEGED DEFECT IN THE PRODUCT DOES NOT EXIST OR WAS CAUSED BY CUSTOMER'S OR ANY THIRD PERSON'S MISUSE, NEGLIGENCE, IMPROPER INSTALLATION OR TESTING, UNAUTHORIZED ATTEMPTS TO REPAIR OR MODIFY, OR ANY OTHER CAUSE BEYOND THE RANGE OF THE INTENDED USE, OR BY ACCIDENT, FIRE, LIGHTNING, OR OTHER HAZARD.

LIMITATION OF LIABILITY: TO THE FULL EXTENT ALLOWED BY LAW TRENDNET ALSO EXCLUDES FOR ITSELF AND ITS SUPPLIERS ANY LIABILITY, WHETHER BASED IN CONTRACT OR TORT (INCLUDING NEGLIGENCE), FOR INCIDENTAL, CONSEQUENTIAL, INDIRECT, SPECIAL, OR PUNITIVE DAMAGES OF ANY KIND, OR FOR LOSS OF REVENUE OR PROFITS, LOSS OF BUSINESS, LOSS OF INFORMATION OR DATE, OR OTHER FINANCIAL LOSS ARISING OUT OF OR IN CONNECTION WITH THE SALE, INSTALLATION, MAINTENANCE, USE, PERFORMANCE, FAILURE, OR INTERRUPTION OF THE POSSIBILITY OF SUCH DAMAGES, AND LIMITS ITS LIABILITY TO REPAIR, REPLACEMENT, OR REFUND OF THE PURCHASE PRICE PAID, AT TRENDNET'S OPTION. THIS DISCLAIMER OF LIABILITY FOR DAMAGES WILL NOT BE AFFECTED IF ANY REMEDY PROVIDED HEREIN SHALL FAIL OF ITS ESSENTIAL PURPOSE.

Governing Law: This Limited Warranty shall be governed by the laws of the state of California.

Some TRENDnet products include software code written by third party developers. These codes are subject to the GNU General Public License ("GPL") or GNU Lesser General Public License ("LGPL").

Go to <http://www.trendnet.com/gpl> or <http://www.trendnet.com> Download section and look for the desired TRENDnet product to access to the GPL Code or LGPL Code. These codes are distributed WITHOUT WARRANTY and are subject to the copyrights of the developers. TRENDnet does not provide technical support for these codes. Please go to <http://www.gnu.org/licenses/gpl.txt> or <http://www.gnu.org/licenses/lgpl.txt> for specific terms of each license.

PWP05202009v2

V2.0R /04.07.2014



Product Warranty Registration

Please take a moment to register your product online.
Go to TRENDnet's website at <http://www.trendnet.com/register>

TRENDnet
20675 Manhattan Place
Torrance, CA 90501. USA