

UNI3510U2E / UNI3510U2EGB  
UNI3510U2EB / UNI3510UEBGB

Instruction Manual

# 3.5" External Hard Drive Enclosure

3.5" eSATA/USB 2.0 to IDE/SATA  
External Hard Drive Enclosure  
with One-Touch Backup

**INFO SAFE**

**StarTech.com**   
*Making hard-to-find easy!®*

## **FCC Compliance Statement**

This equipment has been tested and found to comply with the limits for a Class B digital device, pursuant to part 15 of the FCC Rules. These limits are designed to provide reasonable protection against harmful interference in a residential installation. This equipment generates, uses and can radiate radio frequency energy and, if not installed and used in accordance with the instructions, may cause harmful interference to radio communications. However, there is no guarantee that interference will not occur in a particular installation. If this equipment does cause harmful interference to radio or television reception, which can be determined by turning the equipment off and on, the user is encouraged to try to correct the interference by one or more of the following measures:

- Reorient or relocate the receiving antenna.
- Increase the separation between the equipment and receiver.
- Connect the equipment into an outlet on a circuit different from that to which the receiver is connected.
- Consult the dealer or an experienced radio/TV technician for help.

## **Use of Trademarks, Registered Trademarks, and other Protected Names and Symbols**

This manual may make reference to trademarks, registered trademarks, and other protected names and/or symbols of third-party companies not related in any way to StarTech.com. Where they occur these references are for illustrative purposes only and do not represent an endorsement of a product or service by StarTech.com, or an endorsement of the product(s) to which this manual applies by the third-party company in question. Regardless of any direct acknowledgement elsewhere in the body of this document, StarTech.com hereby acknowledges that all trademarks, registered trademarks, service marks, and other protected names and/or symbols contained in this manual and related documents are the property of their respective holders.

# Table of Contents

<b>Introduction</b> .....	<b>1</b>
Packaging Contents.....	1
System Requirements .....	1
<b>Hardware Guide</b> .....	<b>2</b>
Front Panel .....	2
Rear Panel.....	2
<b>Installation</b> .....	<b>3</b>
Hardware Installation.....	3
Driver Installation.....	4
Software Installation .....	4
<b>Recognizing the Hard Drive</b> .....	<b>6</b>
Windows XP .....	6
Windows Vista .....	7
<b>Specifications</b> .....	<b>9</b>
<b>Technical Support</b> .....	<b>10</b>
<b>Warranty Information</b> .....	<b>10</b>

# Introduction

This enclosure lets you turn any 3.5" Serial ATA or IDE hard drive into an eSATA or USB external hard drive, with support for drives up to 1.5TB capacity, allowing you to customize your external storage solution based on your preference of hard drive model and manufacturer.

## Packaging Contents

- 1 x Hard Drive Enclosure
- 1 x USB Mini B Cable
- 1 x eSATA Cable
- 1 x IDE Cable
- 1 x Driver CD
- 1 x Enclosure Stand
- 1 x Power Adapter
- 1 x SP4 to LP4 Adapter Cable
- 1 x SATA 7+15 pin cable

## System Requirements

- Available USB 2.0 or eSATA port on computer system
- Microsoft Windows® 2000/XP/Vista, Mac OS® 9.x/10.x, Linux Kernel® 2.4.1.0 and above



# Hardware Guide

## Front Panel



1. Power Button/LED
2. Backup Button

## Rear Panel

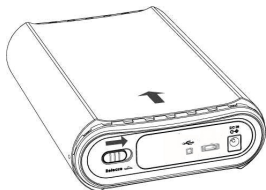


1. DC In Port
2. eSATA Port
3. Mini USB Port
4. Hard Drive Release Switch

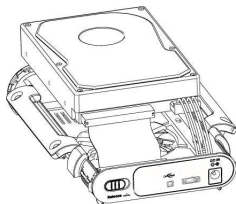
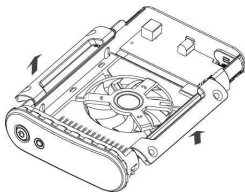
# Installation

## Hardware Installation

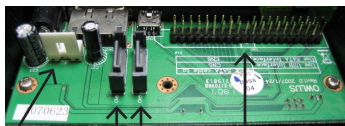
1. Open the hard drive enclosure by pushing the rear panel release button to the right and sliding the hard drive bracket out of the external casing.



2. If using an IDE/ATA hard drive, ensure that the hard drive you are using is set to **MASTER**.
3. Pull the two tabs on either side of the hard drive holding mechanism up, then connect the provided SATA or IDE data and power supply cables to the rear ports of the drive.



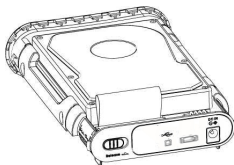
4. **SATA HDD:** If you will be using the USB 2.0 interface to connect to the enclosure, plug the SATA data cable into the port labelled CN5 on the enclosure's PCB board. If using the eSATA interface to connect to the enclosure, plug the SATA data cable into the port labeled CN6 on the enclosure's PCB board. The locations of the CN5 and CN6 ports are shown below. Plug the power connector into the J1 port on the PCB board.



J1 CN6 CN5 CN1

**IDE HDD:** If you will be using the USB 2.0 interface to connect to the hard drive, plug the 40-pin IDE data cable into the port labelled CN1 on the enclosure's PCB board. Plug the included 4-pin SP4 to LP4 power adapter cable into the J1 connector.

- To mount the hard drive, place it into the holding tray and press the tabs on either side down to secure the drive in the enclosure.



- Slide the hard drive holding mechanism into the external casing, ensuring that the release button on the rear panel returns to its original, locked position.

## Driver Installation

**Windows® 2000/XP/Vista, Mac OS® 9.x/10.x, Linux Kernel® 2.4.x +**

No driver installation is required for these operating systems, as this enclosure is natively supported, so the drivers are already installed.

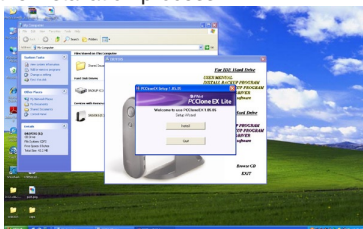
## Software Installation

The following steps outline the procedure to install the software included with your drive enclosure in Windows.

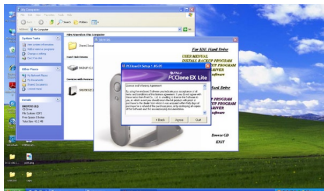
1. Insert the Drivers CD into your computer's CD-ROM. Open the DRIVERS.exe application to begin the installation process.
2. Once the installer is running, there are a number of options available to you from the DRIVERS.exe home screen. To install the backup software, click Install Backup Program under the heading that corresponds with your drive-type (IDE or SATA).



3. The PCClone EX Lite Installer window will appear. Click Install to proceed with the installation process.

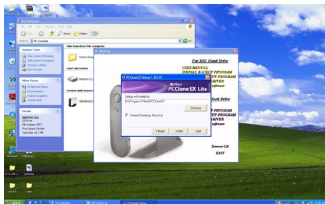


4. The License and Warranty Agreement will appear. To continue, click Agree.

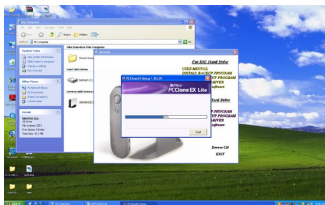




- Click Browse to designate the directory in which the software will be installed. Once you have made your selection, click Install to continue.



- The installation will now take place. Once the installation is complete, you may exit the DRIVERS.exe application.



## Recognizing the Hard Drive

### Windows XP

#### USB 2.0

If you are using the USB 2.0 interface to connect the hard drive enclosure to your computer, no setup is required. Simply plug the hard drive enclosure into an available USB port and turn the power on to the hard drive enclosure. Open My Computer and the drive should be visible under the heading “Devices with Removable Storage.”

## eSATA

If you are using the eSATA interface to connect the hard drive enclosure to your computer, there are two setup processes you can follow. If the hard drive enclosure is powered on upon booting up the computer, it will automatically detect the drive. Otherwise, if you connect and power on the hard drive enclosure once the computer has already been booted up, you will need to open the Device Manager to scan for it. The following directions outline the necessary steps to access your hard drive when the computer has already been booted up:

1. Right click My Computer and click Manage.
2. In the left pane, select Device Manager.
3. In the Device Manager window, click the + next to the Disk Drives icon. Since your drive was not powered on during the boot up process, it should not yet be visible.
4. Turn on the hard drive enclosure. Once the power indicator is illuminated, click the Scan button.
5. The Device Manager will scan for plug and play hardware. Once it has completed the scan, your drive should be visible below the Disk Drives heading.

## Windows Vista

### USB 2.0

If you are using the USB 2.0 interface to connect the hard drive enclosure to your computer, no setup is required. Simply plug the hard drive enclosure into an available USB port and turn the power on to the hard drive enclosure. Open My Computer and the drive should be visible under the heading “Devices with Removable Storage.”

## eSATA

If you are using the eSATA interface to connect the hard drive enclosure to your computer, there are two setup processes you can follow. If the hard drive enclosure is powered on upon booting up the computer, it will automatically detect the drive. Otherwise, if you connect and power on the hard drive enclosure once the computer has already been booted up, you will need to open the Device Manager to scan for it. The following directions outline the necessary steps to access your hard drive when the computer has already been booted up:

1. Right click My Computer and click Manage.
2. In the left pane, select Device Manager.
3. In the Device Manager window, click the + next to the Disk Drives icon. Since your drive was not powered on during the boot up process, it should not yet be visible.
4. Turn on the hard drive enclosure. Once the power indicator is illuminated, click the Scan button.
5. The Device Manager will begin the installation of the necessary driver software. Once it has completed the scan, your drive should be visible below the Disk Drives heading.

# Specifications

<b>Bus Interface</b>	SATA 3.0Gb/s USB 2.0
<b>Chipset ID</b>	JMicron JMB20337
<b>External Connectors</b>	1 x eSATA connector 1 x USB Mini B connector 1 x DC Power connector
<b>Internal Connectors</b>	2 x SATA 7-pin 1 x SATA Power 15-pin 1 x 40-pin IDE/ATA 1 x LP4 Power 4-pin
<b>Maximum Data Transfer Rate</b>	3.0 Gb/s (eSATA) 480 Mb/s (USB 2.0)
<b>Power Adapter Output</b>	12VDC, 2A
<b>Enclosure Material</b>	Aluminum
<b>Operating System Support</b>	Windows® 2000/XP/Vista, Mac OS® 9.x/10.x, Linux Kernel® 2.4.x +

## Technical Support

StarTech.com's lifetime technical support is an integral part of our commitment to provide industry-leading solutions. If you ever need help with your product, visit [www.startech.com/support](http://www.startech.com/support) and access our comprehensive selection of online tools, documentation, and downloads.

## Warranty Information

This product is backed by a one year warranty.

In addition, StarTech.com warrants its products against defects in materials and workmanship for the periods noted, following the initial date of purchase. During this period, the products may be returned for repair, or replacement with equivalent products at our discretion. The warranty covers parts and labor costs only. StarTech.com does not warrant its products from defects or damages arising from misuse, abuse, alteration, or normal wear and tear.

### Limitation of Liability

In no event shall the liability of StarTech.com Ltd. and StarTech.com USA LLP (or their officers, directors, employees or agents) for any damages (whether direct or indirect, special, punitive, incidental, consequential, or otherwise), loss of profits, loss of business, or any pecuniary loss, arising out of or related to the use of the product exceed the actual price paid for the product. Some states do not allow the exclusion or limitation of incidental or consequential damages. If such laws apply, the limitations or exclusions contained in this statement may not apply to you.



StarTech.com has been making “hard-to-find easy” since 1985, providing high quality solutions to a diverse IT and A/V customer base that spans many channels, including government, education and industrial facilities to name just a few. We offer an unmatched selection of computer parts, cables, A/V products, KVM and Server Management solutions, serving a worldwide market through our locations in the United States, Canada, the United Kingdom and Taiwan.

Visit **[www.startech.com](http://www.startech.com)** today for complete information about all our products and to access exclusive interactive tools such as the Cable Finder, Parts Finder and the KVM Reference Guide.