



USER'S MANUAL

DoubleSight™ DS-245W LCD MONITOR

For the latest updates and more information, visit our website at
www.doublesight.com

Trademarks

DoubleSight, DoubleSight Displays, the DoubleSight logo, and other DoubleSight trademarks are the property of DoubleSight Displays and may be registered in the United States and/or other countries.

Microsoft, Windows, and the Microsoft logo are trademarks or registered trademarks of Microsoft Corporation in the United States and/or other countries. Apple and Macintosh are trademarks or registered of Apple Computer, Inc. in the United States and/or other countries. Energy Star is a U.S. registered trademark. All other product names, logos, designs, or titles mentioned within this manual may be trademarks of their respective owners.

Disclaimer

DOUBLESIGHT DISPLAYS MAKES NO WARRANTY, EITHER EXPRESS OR IMPLIED, REGARDING THIS MANUAL AND THE INFORMATION CONTAINED HEREIN.

DOUBLESIGHT DISPLAYS HEREBY EXPRESSLY DISCLAIMS ANY IMPLIED WARRANTIES OF MERCHANTABILITY OR FITNESS FOR ANY PARTICULAR PURPOSE AND UNDER NO CIRCUMSTANCES SHALL DOUBLESIGHT DISPLAYS BE LIABLE FOR ANY INCIDENTAL, CONSEQUENTIAL, OR SPECIAL DAMAGES, WHETHER BASED ON TORT, CONTACT, OR OTHERWISE, ARISING OUT OF OR IN CONNECTION WITH THIS MANUAL, INFORMATION CONTAINED HEREIN, OR THE USE THEREOF.

Copyright 2003–2007 DoubleSight Displays. All rights reserved. This manual may not be copied, photocopied, reproduced, translated, or converted to any electronic form in whole or in part without prior written consent of DoubleSight Displays.

DoubleSight Displays reserves the right to make any modification to this manual or the information contained herein at any time without notice. DoubleSight Displays assumes no responsibility for errors or omissions in this manual. For the latest modifications and more information, visit our website at <http://www.doublesight.com>

First Edition: February 2007

DoubleSight Displays

18 Technology Dr., #161

Irvine, CA 92618 U.S.A.

TEL: 1-877-TwoLCDs(1-877-896-5237) (U.S. only)

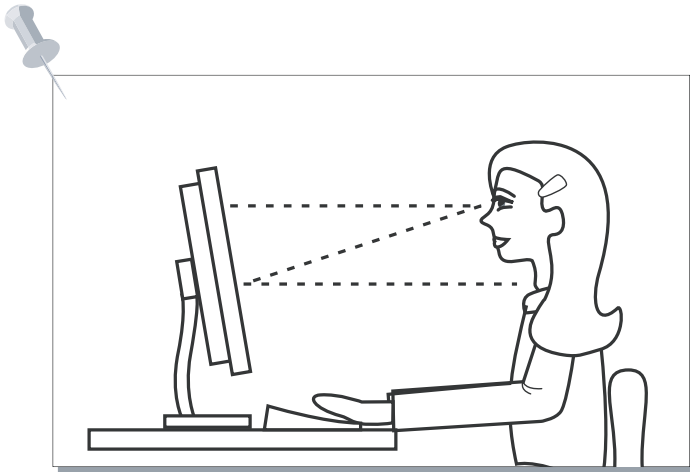
E-mail: info@doublesight.com

Correct posture for effective use of the LCD monitor.

Placement

Correct placement and adjustment of the monitor can reduce eye, shoulder, and neck fatigue. Check the following when you position the monitor.

Keep the top of the monitor screen slightly below eye level. Your eyes should look slightly downward when viewing the middle of the screen.



Position your monitor no closer than 16 inches no further away than 30 inches from your eyes. The optimal distance is 25 inches.

Index

Prior to use

Safety Precautions	5
Components Name & Introduction	8

Connection & Installation

Connecting the Monitor to a Computer	11
Installing the Monitor Driver	12

OSD(On Screen Display) screen select & control

Adjusting the Monitor Screen	14
------------------------------------	----

Additional Information

Recommendations	16
Troubleshooting	17
Supported Mode Table	18
Power Save Mode	18
Product Specification	19

- ※ Limited Warranty
- ※ Regulatory Information

This device has passed the electromagnetic wave test and may be used in any place including residential areas.

Safety Precautions

The contents of this section are intended to protect the user from danger and prevent physical accidents. Please read through the contents for proper use.



Ignoring the safety precautions may lead to accidents causing injury or fatality and structural damage.

Cautions are categorized into two types, "Warning" and "Caution" depending on their level of importance.

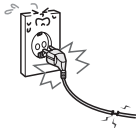


Warning : May lead to accidents causing serious human injury



Caution : May lead to minor accidents and damage

Do not use a damaged power cord or plug, or connect to a loose power outlet. Doing so may cause electric shock or fire.



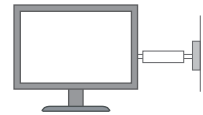
Warning

Do not pull the power cord when unplugging the power, and do not touch the power plug with wet hands. Doing so may cause electric shock or fire.



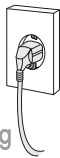
Warning

Connect the power plug to grounded power outlets only. Failure to do so may cause electric shock or injury.



Warning

Insert the power plug securely into the outlet. Insecure and unstable electrical contact may lead to fire.



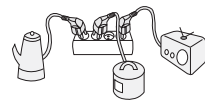
Warning

Do not bend the power cord excessively or allow the cord to be compressed under a heavy object. Doing so may cause electric shock or fire.



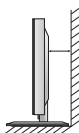
Warning

Do not connect more than one plug to a single wall outlet. Doing so may lead to fire.



Warning

Provide sufficient space between the monitor and the wall for ventilation (cooling). Overheating may lead to fire.



Warning

Make sure that the ventilation holes are not covered by fabrics, curtains, other clothes like material, etc.



Warning

Safety Precautions

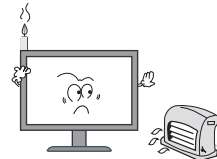
Place the monitor on a firm flat surface and be careful when handling the monitor.

Mishandling the product may cause short circuits and damage the product or cause injury.



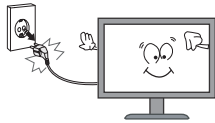
Do not place candles, lighted cigarettes, or other heat-radiating objects on the monitor or near the monitor.

Doing so may lead to fire.



Disconnect the power when cleaning the product.

Failure to do so may cause electric shock or fire.



Do not use flammable sprays or substances near the product.

Doing so may lead to explosion or fire.



Do not place the product in a place where the ventilation is poor (eg. inside a cabinet).

Doing so may lead to fire.



Set the PC to match the resolution and frequency of the monitor.

24" Types - 1920 X 1200 @ 60Hz



Safety Precautions



Set the PC to activate power save mode (DPMS) when the monitor is not used for a while. Set the screen saver function and select a type that maintains motion in the whole screen.

Do not insert metallic objects into the ventilation holes. They may cause electric shock or fire.



 **Warning**

Do not allow children to climb onto the product or hang on it. The product may fall over and cause serious injury.



 **Warning**

Do not attempt to dismantle, repair, or modify the product yourself. This may cause fire or electrical failures.



 **Warning**

Unplug the monitor when not using for a long period of time.

Dust build-up on the product (near the vents) may cause overheating and lead to fire. Use a dry soft cloth for cleaning purposes.



 **Warning**

Carefully unplug the monitor if you see any signs of smoke or smell odor of burning. Contact the manufacturer for further information.



 **Warning**

Use a soft dry cloth to clean the monitor, and unplug it before cleaning.

Do not use any chemical solutions on the monitor for cleaning purposes. Do not use a wet cloth on the monitor.



 **Caution**

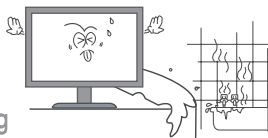
Do not spray water directly onto the product. It may cause electrical faults or fire.



 **Warning**

Do not install the monitor where water (rain) drops can enter the enclosure, or where there is oil or humidity.

It may cause electrical faults, fire, or lead to damage to the monitor.



 **Warning**

Clean any dirt, dust or water from the power plug contacts.

They may cause electrical faults or fire.

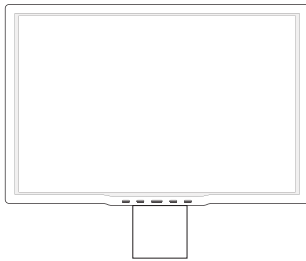


 **Warning**

Components Name & Introduction

- ※ Check if all the components are included in the package. Contact the sales outlet if any components are missing
- ※ Contact the sales if you wish to purchase optional extras.

Actual components may look different from the pictures below.



Monitor



Monitor Stand



Install CD



DVI-D Cable



VGA Cable



Power Cord

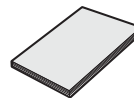


USB Cable



Audio Cable

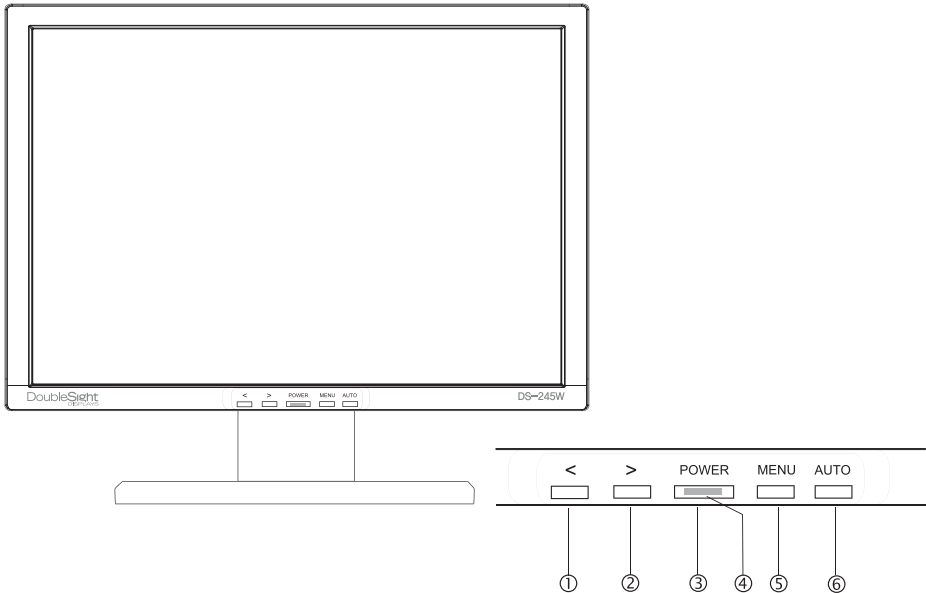
(PC Input Cable)



Quick Guide

Component Name & Introduction

FRONT



- ① < : Adjusts volume of sound, Move with in the OSD menu or adjust values(DOWN, LEFT)
- ② > : Adjusts volume of sound, Move with in the OSD menu or adjust values(UP, RIGHT)
- ③ POWER : Power ON/OFF
- ④ Power indicate : On Mode : Green / DPMS Mode : Red / OFF Mode : Black
- ⑤ MENU : Indicates OSD menu / Select highlighted function.
- ⑥ AUTO : Adjusts screen to be optimum automatically. / Cancels selected menu.

BASIC SETUP

►Automatic Image Adjustment.....

You can adjust the image settings (such as image position, phase, etc.) manually or by using the LCD monitor's automatic image adjustment feature. This will adjust the image parameters to their optimal settings for the current graphics mode. Press **AUTO** (⑥ in fig. 4) to launch the automatic adjustment. The process will take a short while until completed.

►Shortcut for Adjusting Contrast and Brightness.....

You can adjust contrast and brightness directly by pressing the **<** button (① in fig. 4) while the OSD menu is not displayed. Press the **>** button (② in fig. 4) to increase the contrast/brightness or the **<** button (① in fig. 4) to decrease it.

►Setting the Volume Directly.....

You can adjust the volume directly by pressing button **>** (② in fig. 4) when the OSD menu is not displayed on screen. You can then change the volume by pressing the buttons **<** or **>** (① and ② in fig. 4).

►Locking and Unlocking the OSD.....

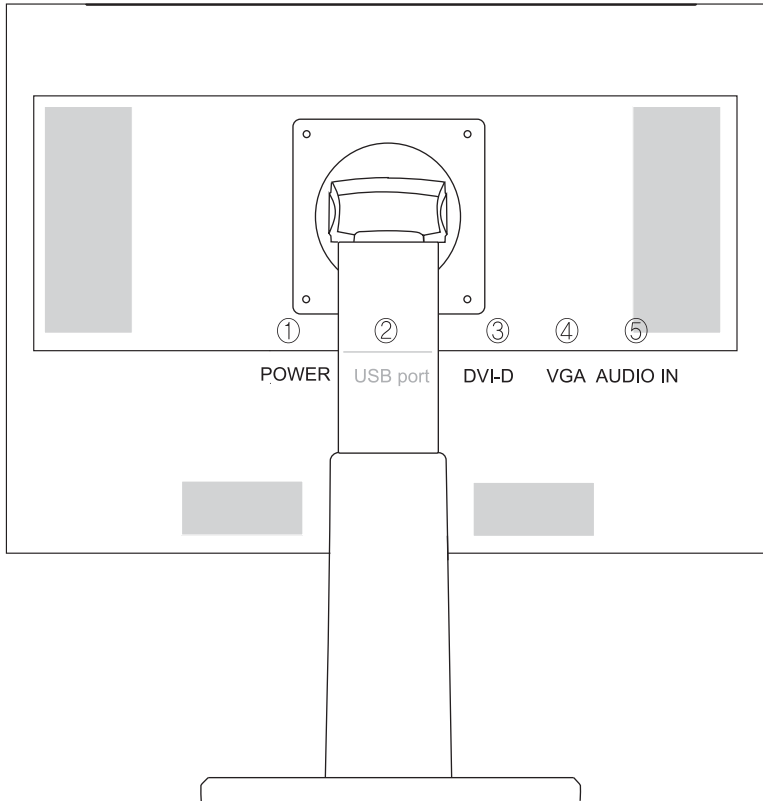
To lock and unlock the OSD menu, hold down the button combination **<** (① in fig. 4) and **MENU** (⑤ in fig. 4) until a corresponding message is displayed.

►Disabling the Sound (MUTE).....

You can mute sound playback by pressing the button **>** (② in fig. 4) while the OSD menu is not displayed on screen. Next, press the button **MENU** (⑤ in fig. 4) to mute the sound or press the button **MENU** again to reactivate it.

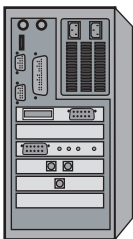
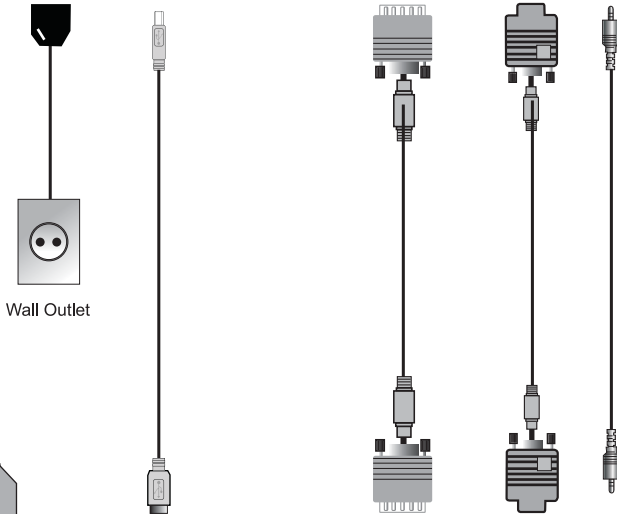
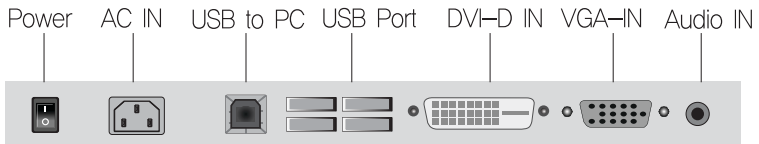
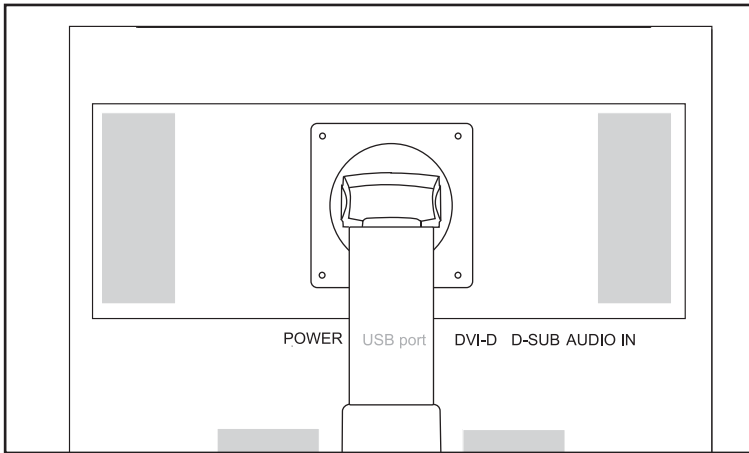
Component Name & Introduction

REAR



- ① Power input Connector
- ② USB upstream port/ USB downstream port
- ③ DVI Input Connector
- ④ VGA Input Connector
- ⑤ Audio Input Connector

Connecting the Monitor to a Computer

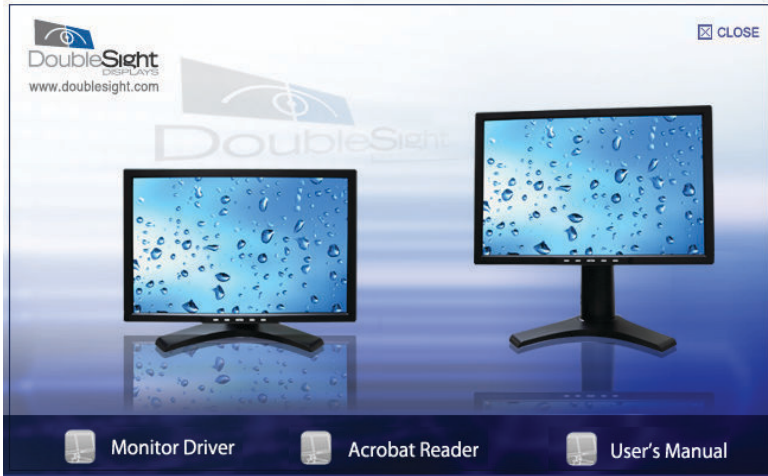


COMPUTER

Installing the Monitor Driver

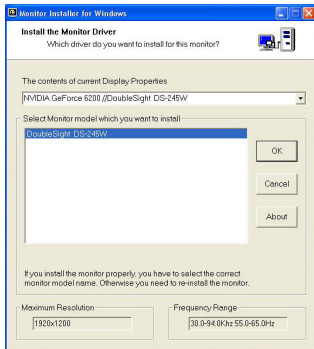
1. Turn on the monitor and PC.
2. Insert the monitor installation CD into CD-ROM. In a few seconds, the installation screen will be displayed.

(The installation screen can not be displayed depending on OS's setting status. "If the screen are not appeared, execute Autorun.exe In CD.")

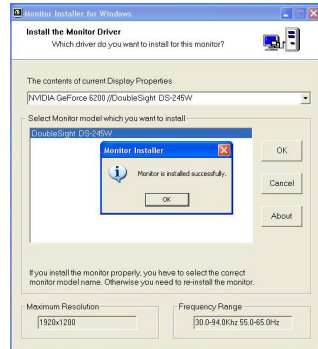


3. Select "Monitor Driver" in the installation screen.
4. When the main installation screen of monitor driver comes out, please follow the step of next page.

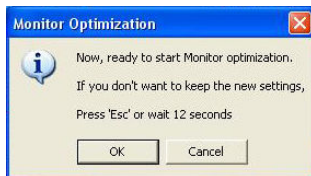
Installing the Monitor Driver



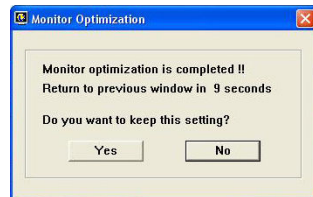
Click on the "OK" button



Click on the "OK" button



Automatically Adjusts the screen.
Click on the "OK" button

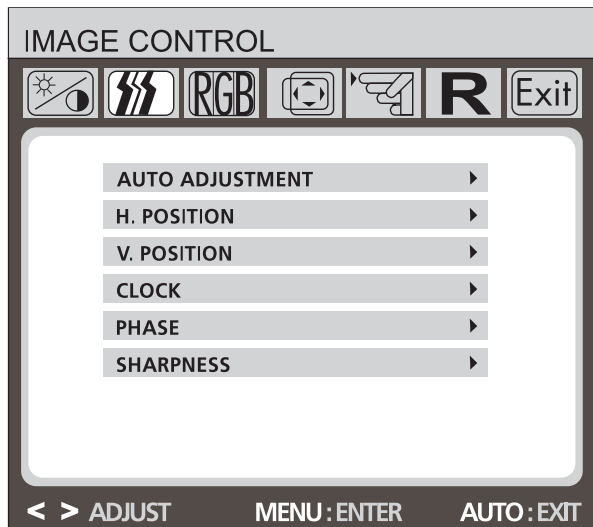


Click on the "Yes" button

Adjusting the Monitor Screen

[OSD] Main screen

DoubleSight features an intuitive, menu-driven On-screen Display(OSD) that provides a full range of customizable tools to optimize your display. The OSD can be accessed anytime your computer is powered up. (Note : If your computer is in power-saving mode or is powered down, the OSD will be inaccessible.)










OSD(On Screen Display) screen selection and control procedures.

1. Press the “MENU” button to bring up the OSD screen.
2. Press the “< , >” buttons to select the main option.
3. Press the “MENU” button after selecting the main option.
4. Bring up the sub-menu. Use the “< , >” buttons to select the desired option.
5. Press the “MENU” button after selecting the desired sub-menu option.
6. Use the “< , >” buttons to adjust the set value.
7. Pressing the “AUTO” button three times saves and exits the setting mode.

*Pressing the “AUTO” button moves back to the previous menu.

Adjusting the Monitor Screen

MAIN MENU -ICON	MAIN MENU	SUB MENU	Function Explanation
	BRIGHTNEES/ CONTRAST	BRIGHTNEES CONTRAST	Adjusts screen brightness. Adjusts screen light and darkness.
	IMAGE CONTROL	AUTO ADJUSTMENT	Adjusts screen to be optimum automatically. * This cannot be adjusted in the digital mode.
		H. POSITION	Adjusts screen left or right.
		V. POSITION	Adjusts screen upwards or downwards.
		CLOCK	Removes noise coming out vertically on screen.
		PHASE	Removes noise coming out horizontally on screen.
		SHARPNESS	Controls image sharpness. (only for resolutions less than 1920*1200 pixels)
		SIZE *	Adjusts screen ratio. (4:3, 16:9)
	COLOR	SRGB 6500K 9300K	Lets you select a preset color temperature(9300K, 6500K or SRGB).
		CUSTOM COLOR/RED	Can adjust three colors, red, green and blue, individually, if CUSTOM COLOR is selected.
		CUSTOM COLOR/GREEN	
		CUSTOM COLOR/BLUE	
	OSD CONTROL	H. OSD POSITION	Adjusts OSD screen left or right.
		V. OSD POSITION	Adjusts OSD screen upwards or downwards.
		OSD TIMEOUT	Adjusts OSD time on screen.
	OTHER	LANGUAGE	Selects OSD lanuages.
		INPUT	Selects input signals.
		SPEAKER VOLUME	Adjusts volume of sound.
		INFORMATION	Displays the current screen resolution.
	RESET	YES	Contents established by user comes to the initial value.
		NO	Not to be lead to initial value.
	EXIT		Closes OSD MENU.

* SIZE : Only 4:3 mode operates (800*600, 1024*768, 1280*1024)

Recommendations

To enjoy optimal display

1. Due to the TFT-LCD monitor panel's characteristics, the optimal resolution is limited to monitor size. Other resolution settings may decrease the display quality. Therefore is recommended that the optimal resolution be used.

Optimal 24" resolution by screen size (type) 24" types: 1920 X 1200 @ 60Hz

2. The product may output a display of up to 1 PPM (one pixel per million) brighter or dimmer due to technical limitations in LCD Panel manufacturing. This characteristic does not affect the performance of the product.

Number of pixels by LCD panel size: 24" types : 6,912,000 pixels

3. Use a soft dry cloth with a special cleansing solution for cleaning the monitor. Do not apply excessive force when cleaning the display panel. Using excessive force may leave marks.
4. Run the "Auto" (Auto-Adjust) function when dissatisfied with the display quality. This will enhance the quality. However, use the fine-tuning facility (phase/frequency control) if noise remains after automatic adjustment.
5. Having the monitor display fixed images may leave after-images or unwanted marks on the screen. Set the monitor power save mode from the PC or use a screen saver to protect the monitor.

Effects of Surroundings

The monitor position and location may affect viewing quality.

1. Do not place an amplifying speaker near the monitor.
2. Maintain at least 3 feet distance from any electronic appliances such as radios, fans, clicks, and telephones.

Troubleshooting

Problem	Solution
Color appears abnormal. It is in black and white.	Reconnect the PC connecting cables. Insert the PC's video card correctly. Re-boot the PC. Set the video card again after referring to the video card manual.
The displayed screen position suddenly changes or tilts inward.	Use the screen control to adjust the displayed screen shape. Set the resolution and/or frequency on the video card (refer to the supported mode table). Differences in the signal period of the video card may cause changes in the displayed position from time to time. Use the screen control functions to correct the displayed screen position.
Displays 16 colors only. The color has changed after replacing the video card.	Windows ME/XP/Vista: Re-set the color from the Control Panel -> Display -> Setting Re-install the video card driver.
Power indicator lamp blinks orange.	Monitor is in Sleep Mode
Cannot control the screen with the buttons on the front of the monitor.	Contact technical support
There are colored spots on the screen.	There may be a few colored (red, green, white, black) pixel spots on the screen during use. This is a natural characteristic in LCD panels. It is not a malfunction and does not affect the monitor's performance.
The power indicator lamp is off.	Check if the power cable is intact. Reconnect the power cable correctly if necessary.
The "No Cable" message appears on the screen.	Check if the connection between the PC and monitor is intact. Reconnect the cable correctly if necessary.
The "Non Support Mode" message appears on the screen.	The output signal from the video card exceeds the monitor's maximum resolution or frequency limit. Set the maximum resolution and frequency to suit the product limits.
The screen appears to be sliding downward.	Check the connection between the PC and monitor. Re-connect if necessary.
The screen is unclear.	Run the auto-adjusting function.
The screen appears unstable and flickers. The screen leaves shadows.	Check if the computer or video card output resolution and frequency is set within the limits. Re-set the screen display by referring to the resolution information and standard supported mode table.
The screen is too bright or dark.	Use the brightness or contrast controls to adjust the display.
The color on the screen is not uniform.	Use the color density control to set the color.
Lines appear on the screen and the screen flickers.	Turn off any cordless phones, hair dryers, electrical drills etc. that are in use.



Caution

Use a soft dry cloth to clean the product.
Use a clean cloth with a special screen cleanser.

- Do not scratch the monitor panel with your fingernails or other sharp objects.
- Do not use flammable substances such as benzene or paint thinner on the product. Do not use a wet cloth.
- Do not use acetone, benzene, or paint thinner on the product.

Supported Mode Table

Resolution	Horizontal frequency (KHz)	Vertical frequency (Hz)
640 x 480	31,47 kHz	60 Hz
	35,00 kHz	70 Hz
	37,86 kHz	72 Hz
	37,50 kHz	75 Hz
720 x 400	31,47 kHz	70 Hz
800 x 600	35,15 kHz	56 Hz
	37,88 kHz	60 Hz
	48,08 kHz	72 Hz
	46,88 kHz	75 Hz
1024 x 768	48,36 kHz	60 Hz
	56,48 kHz	70 Hz
	60,02 kHz	75 Hz
1280 x 1024	67,98 kHz	60 Hz
	79,98 kHz	75 Hz
1600 x 1200	75,00 kHz	60 Hz
	93,75 kHz	75 Hz
1920 x 1200	74,04 kHz	60 Hz

Power Save Mode

This monitor comes with a power save function that activates when the monitor has not been used for a while. Power consumption is reduced in power save mode, and this is indicated by the power indicator lamp's color. Pressing a key on the keyboard or mouse turns the monitor back on. However this function is only enabled when the monitor is connected to a PC that has a power save function.

The power save function operates as described below.

Power save mode	Normal mode	Stand by mode
Power indicator lamp color	Green	Red
Power Consumption	Max 100W	Below 2W

Product Specification

Specification		
LCD	Visible Screen Area	518.4(H) x 324.0(V) 24.0 Inch
	Pixel Pitch	0.270(H) x 0.270(W)
	Maxium Visible Angle	89° / 89° / 89° / 89° (Top/Bottom/Left/Right)
	Displayed Color	16.7M
	Response Time	6 msec (GTG)
	Brightness	500cd/m ²
	Contrast Ratio	1000:1
	Recommended Resolution	1920 x 1200 (60Hz)
Video Signal	Horizontal Frequency	30KHz ~ 94KHz
	Vertical Frequency	56Hz ~ 75Hz
Power	AC	100V - 240V, 50Hz/60Hz
	Power Consumption	Max 100W, Power Save Mode below 2W
Dimensions/ Weight		W : 22.4 inch H : 16.5 inch D : 10.4 inch / 24.3 lbs(net)
Operating Environment		Operation: 0 to +40°C, humidity: 20-80% (non-condensing) Storage: -20 to +60°C, humidity: 8-95% (non-condensing)

※ The above specifications may vary to improve performance without prior notice.

Limited Warranty

INTRODUCTION

This Warranty covers DoubleSight Displays's ("DSD") DS-245 Series DoubleSight 24" LCD Monitors ("Product") sold by DSD or DSD's authorized resellers. DSD provides a limited warranty for the originally purchased Products for use, not resale ("Original Purchase"), located in the United States. No DSD authorized reseller may claim any right or interest under this limited warranty.

Notice

DoubleSight Displays now includes a 3 year standard warranty for DS-245 Series model only from Original Date of Purchase.
Thank you for your support!

DoubleSight Displays

LIMITED WARRANTY

DSD warrants this Product to be free from defects in material and workmanship for a period of three (3) years from the date of Original Purchase. Spare parts are warranted for ninety (90) days. Subject to the conditions set forth below, if a Product proves to be defective in material or workmanship during the warranty period, DSD will, at its sole option, repair or replace the Product with a similar Product. Replacement Product or parts may include remanufactured or refurbished parts or components and will meet the specifications of the original parts or unit.

This warranty is extended by DSD only to the original purchaser ("you") of the Product and is not transferable. During the warranty period, DSD shall provide you with limited telephone technical support providing assistance to you solely for the purpose of defining any problem. Repair or replacement of the Product is limited to the United States.

CUSTOMER RESPONSIBILITIES

As the original purchaser you have thirty (30) days in which to review the contents of the Product's packaging for any missing or broken items. After the first thirty (30) days of ownership, beginning from the date of Original Purchase, a charge will be incurred for replacement of any item you, the original purchaser, may wish to order from DSD. Such charges will include handling and shipping costs incurred for delivery of any such items.

WARRANTY EXCLUSIONS

This warranty does not cover:

1. Any Product on which the serial number has been defaced, modified or removed.
2. Damage, deterioration or malfunction resulting from:
 - A. Accident, disaster, misuse, neglect, fire, water, lightning, or other acts of nature, unauthorized product modification, or failure to follow instructions and environment specifications supplied with the Product.
 - B. Repair or attempted repair by anyone not authorized by DSD.
 - C. Customer supplied interfacing.
 - D. Improper site preparation and maintenance.
 - E. Damage to or loss of any programs, data or removable storage media.
 - F. Software or data loss occurring during repair or replacement.
 - G. Any damage of the Product due to shipment.
 - H. Removal or installation of the Product.
 - I. Causes external damage to the Product, such as electric power fluctuations or failure.
 - J. Use of supplies or parts not meeting DSD's specifications.
 - K. Normal wear and tear.
 - L. Subjecting the Product to displaying of fixed images for a long periods of time resulting in image persistence (afterimage effects) or image burn-in.
 - M. Any other cause which does not relate to a product defect.
3. Removal, installation, and set-up service charges.

HOW TO OBTAIN WARRANTY SERVICE

1. For information on warranty service, call DSD customer service toll-free in the U.S.A. by calling 1-888-897-8869 , or email DSD at support@doublesight.com.
2. To obtain warranty service, you will be required to provide
 - A. The original dated sales slip.
 - B. Your name.
 - C. Your address.
 - D. The serial number of the product.
 - E. A description of the problem.
3. Bring or ship the Product prepaid and insured in the original container, with the associated accessories, to the DSD depot repair site. All Products returned to the DSD depot repair site for service MUST have prior approval which may be obtained by calling the telephone number above.

DISCLAIMER OF WARRANTIES

THERE ARE NO WARRANTIES, EXPRESS OR IMPLIED, WHICH EXTEND BEYOND THE DESCRIPTION CONTAINED HEREIN. THE WARRANTIES CONTAINED HEREIN ARE IN LIEU OF ALL OTHER WARRANTIES EXPRESS OR IMPLIED, INCLUDING, BUT NOT LIMITED TO, THE IMPLIED WARRANTY OF MERCHANTABILITY AND FITNESS FOR A PARTICULAR PURPOSE. DSD MAKES NO OTHER EXPRESS OR IMPLIED WARRANTY OR CONDITION WHETHER WRITTEN OR ORAL. SOME STATES DO NOT ALLOW THE EXCLUSION OF IMPLIED WARRANTIES SO THE ABOVE EXCLUSIONS OR LIMITATIONS MAY NOT APPLY TO YOU. THIS WARRANTY GIVES YOU SPECIFIC LEGAL RIGHTS AND YOU MIGHT ALSO HAVE OTHER RIGHTS THAT VARY FROM STATE TO STATE.

EXCLUSIVE REMEDIES

THE REMEDIES PROVIDED IN THIS STATEMENT OF LIMITED WARRANTY ARE YOUR SOLE AND EXCLUSIVE REMEDIES. IN NO EVENT WILL DOUBLESIGHT DISPLAYS BE LIABLE FOR DIRECT, INDIRECT, INCIDENTAL, CONSEQUENTIAL, OR OTHER TYPES OF DAMAGES RESULTING FROM ANY BREACH OF WARRANTY, OR CONTRACT OR ANY TORT (INCLUDING NEGLIGENCE) OR UNDER ANY OTHER LEGAL THEORY, INCLUDING LOST PROFIT, DOWNTIME, GOODWILL, DAMAGE TO OR REPLACEMENT OF EQUIPMENT AND PROPERTY, AND ANY COSTS OF RECOVERING, REPROGRAMMING, OR REPRODUCING ANY PROGRAM OR DATA SORTED IN OR USED WITH THIS PRODUCT. EVEN IF DSD OR A DSD AUTHORIZED RESELLER FOR THIS PRODUCT HAS BEEN ADVISED OF THE POSSIBILITY OF SUCH DAMAGES, OR FOR ANY CLAIM BASED ON ANY THIRD PARTY CLAIM. DSD LIABILITY WILL BE NO MORE THAN THE AMOUNT YOU PAID FOR THE PRODUCT THAT IS THE SUBJECT OF A CLAIM. THIS IS THE MAXIMUM AMOUNT FOR WHICH DSD WILL BE RESPONSIBLE. SOME STATES DO NOT ALLOW THE LIMITATION OR EXCLUSION OF LIABILITY FOR INCIDENTAL OR CONSEQUENTIAL DAMAGES SO THE ABOVE EXCLUSIONS OR LIMITATIONS MAY NOT APPLY TO YOU.

This Product is warranted in accordance with the terms of this limited warranty. You are cautioned that Product performance is affected by system configuration, software, the application, customer data, and operator control of the system, among other factors. While DSD Products are considered to be compatible with many systems, specific functional implementation by the original purchaser of the Product may vary. Therefore, suitability of a Product for a specific purpose or application must be determined by the original purchaser and is not warranted by DSD.

Regulatory Information

FCC Compliance

This device complies with Part 15 of the FCC Rules. Operation is subject to the following two conditions: (1) This device may not cause harmful interference, and (2) this device must accept any interference received, including interference that may cause undesired operation. This equipment has been tested and found to comply with the limits for a Class B digital device, pursuant to Part 15 of the FCC Rules.

These limits are designed to provide reasonable protection against harmful interference in a residential installation. This equipment generates, uses and can radiate radio frequency energy and, if not installed and used in accordance with the instructions, may cause harmful interference to radio communications. However, there is no guarantee that interference will not occur in a particular installation.

If this equipment does cause harmful interference to radio or television reception, which can be determined by turning the equipment off and on, the user is encouraged to try to correct the interference by one or more of the following measures:

- Reorient or relocate the receiving antenna.
- Increase the separation between the equipment and receiver.
- Connect the equipment to an outlet on a circuit different from that to which the receiver is connected.
- Consult the dealer or an experienced radio/TV technician for help.

FCC WARNING

To assure continued FCC compliance, the user must use a ground power supply cord and the provided shielded video interface cable with bonded ferrite cores. If a BNC cable is going to be used, use only a shielded BNC (5) cable. Any unauthorized changes or modifications not expressly approved by the party responsible for compliance could void the user's authority to operate this device.

User Information

Users may find the following booklet, prepared by the Federal Communications Commission, helpful: "How to Identify and Resolve Radio-TV Interference Problems." This booklet is available from the U.S. Government Printing Office, Washington, D.C. 20402



www.doublesight.com

DoubleSight Displays
18 Technology Dr., #161
Irvine, CA 92618 U.S.A.
TEL: 1-877-TwoLCDs(1-877-896-5237) (U.S. only)
E-mail: info@doublesight.com