

PENTAX

DSmobile



User's Guide

PENTAX
TECHNOLOGIES

CE Conformity and FCC Statement _____



This equipment has been tested and found to comply with the limits of the European Council Directive on the approximation of the member states relating to electromagnetic compatibility (98/336/EEC) according to EN 55022 Class B.



This equipment has been tested and found to comply with the limits for a Class B digital device, pursuant to Part 15 of the FCC Rules. These limits are designed to provide reasonable protection against harmful interference in a residential energy and, if not installed and used in accordance with the instructions, may cause harmful interference to radio communications. However, there is no guarantee that interference will not occur in a particular installation. If this equipment does cause harmful interference to radio or television reception, which can be determined by turning the equipment off and on, the user is encouraged to try to correct the interference by one or more of the following measures:

- Reorient the receiving antenna
- Increase the separation between the equipment and receiver
- Move the computer away from the receiver
- Connect the equipment into an outlet on a circuit different from that to which the receiver is connected

Trademarks _____

DSmobile is a registered trademark of Pentax Technologies Corp. Windows, Windows 98, Windows Me, Windows 2000, Windows XP and Microsoft are registered trademarks of Microsoft Corporation. Presto PageManager is a registered trademark of NewSoft Corp. All other trademarks are the properties of their respective owners.

Caution _____

Please do not introduce stapled, chipped or wet documents into this scanner. Those can do damage to the unit and void the warranty.

Contents

Installation of Hardware & Software	1
Initial Calibration	2
Periodic Calibration & Cleaning	3
Predefined Settings	4
Custom Settings	5
Using This Scanner with Application Programs	6
Technical Support	7

Installation of Hardware & Software

1. Attach the Scanner to the USB connection found on your computer.
2. Under a Windows operating systems, the computer will automatically detect a new hardware device and the system will notify you that it finds a new USB device.
3. Insert Software CD into computer. When prompted to select a specific driver, select CD device and select NEXT to finish driver installation.
4. Following, the installation of Presto PageManager an auto-play, program will launch. Note: manually launch the setup if the program does not automatically begin. Follow the instructions displayed on the screen to finish application program installation.

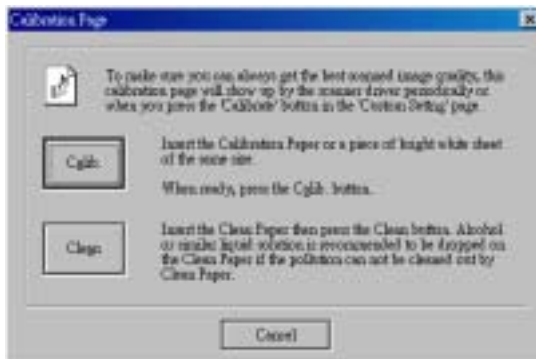
Note: To Windows 2000 & XP users, If you receive a warning during installation that “This hardware has not passed Windows Logo testing” or “The software does not contain a Microsoft digital signature” please select Continue Anyway or Yes (continue the installation). We assure you that the scanner has been thoroughly tested with Windows 2000 & XP to the USB.org test standards and will work well with both of those operating systems.

5. Once complete, you may need to restart the computer before you're ready to run an image application program and perform the initial scanner calibration.

Initial Calibration

Calibrating the scanner's hardware and software is essential and must be done prior to scanning any other documents. Please follow these simple steps:

1. Launch PageManager from the system desktop, or you can use other TWAIN image application programs instead, like "Imaging" which is a built-in program in Windows.
2. Select source: click FILE and select the DSmobile device.
3. Then click the "scan" icon on the tool bar to launch the TWAIN user's interface of the scanner.
4. The "Predefined Setting" window will appear.
5. Click any "predefined Setting" button
6. The user's interface for Calibration and Cleaning will automatically appear on the desktop.



7. Use the Calibration Paper provided in the package and insert it with text facing up and arrows pointing toward the scanner.
8. Click the “Calib.” button as shown above to do the calibration. When the process is complete, you’re ready to use the scanner.

Note: When the scanner is connected to a different computer, the Initial Calibration must be done prior to scanning any other documents.

Periodic Calibration & Cleaning

1. Periodic Calibration:

Scanners should be calibrated on a monthly basis or after scanning 500 pages to ensure the best image quality. Please follow these simple steps:

1-1 Follow the same steps as the 1st to 3rd steps in Initial Calibration above.

1-2 Select “Custom Setting” from the window.

1-3 Select the “Calibrate” button to launch the user’s interface of Calibration and Cleaning.

1-4 Insert Calibration Paper the same way as in Initial Calibration. You can make use of a blank white letter-size paper instead if you cannot find the standard Calibration Paper.

1-5 Click the “Calib.” button to do a calibration.

2. Periodic Cleaning:

If the output image displays unexpected features, such as streaky lines, discoloration, etc., it is possible that the surface of the image sensor is polluted by dust, oil, or glue. To remove it and clean the surface, please insert the Cleaning Paper provided in the package into the scanner and click the “Clean” button on the user’s

interface for Calibration and Cleaning to do cleaning.

Predefined Settings

Our 5 predefined settings include this scanner's most frequently used functions and are designed for your convenience. The settings are displayed once you click the scanner icon and can be easily launched by selecting their respective buttons.



Custom Settings

To customize your own settings, please select “Custom Setting” from the user’s interface.



Here you can change the settings to the proper specifications you feel are required. You can adjust the Mode, Resolution, Filter (None or De-screen) together with scanning size. You can also adjust Brightness, Contrast, Color (Gamma), Highlight and Shadow.

The window to the right is the “Preview Window”. This will give you an idea of the results of your changes.

- The Zoom +/- box allows you to review the image to a larger/smaller size.
- The “Unit” button changes from inches to centimeters.
- The “Reset” button resumes to the scanner default settings.

Once your settings are defined, select the “Preview” button to do preview scanning and then press the “Scan” button to do final scan.

Using This Scanner with Application Programs _____

This scanner is fully TWAIN compliant, so you can use it with literally thousands of applications that use TWAIN device input. From desktop publishing to games, and from faxing to business card scanning, you will discover many useful applications for this scanner.

Please remember when running these application programs, you will need to select this scanner from other TWAIN devices that you may have installed on your computer (such as digital cameras or video capture device...). All TWAIN compliant applications have a method for selecting the proper imaging device, so please read the application instructions carefully!

DSmobile Customer Support

Technical support is available for customers in the U.S. and Canada from 8 A.M. to 5 P.M. Mountain Time, Monday through Friday at 1-800-543-6144.

For Customer Support in Europe please call +32.2.306.1194.

Visit the Pentax web site at: www.pentaxtech.com

PENTAX[®] DSmobile™ USB

PENTAX Technologies Corporation

100 Technology Drive, Suite 200

Broomfield, CO 80021 USA

Phone: 303-460-1600

Fax: 303-460-1628

Internet: <http://www.pentaxtech.com>

PENTAX Technologies Europe, nv

Weiveldlaan 3-5

1930 Zaventem (Belgium)

Phone: +32.2.306.1190

Fax: +32.2.306.1199

Technical Support

In US: 303-460-1600, 9 am to 5 pm Mountain Time, M-F

Outside US: Contact your local reseller or

any of the Authorized Service Centers

Ordering Accessories

In US: 1-800-543-6144, 9 am to 5 pm Mountain Time, M-F

Outside US: Contact your local reseller