

LANBOX Lite™

Combination of Strength and Beauty

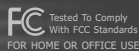
User's Manual

VF6000 Series



Thermaltake
COOL ALL YOUR LIFE

© 2006 Thermaltake Technology Co., Ltd. All Rights Reserved. 2006.12
All other registered trademarks belong to their respective companies. www.thermaltake.com



Thermaltake™
COOL ALL YOUR LIFE

CONTENTS

Chapter 1. Product Introduction

1-1	Specification	01
-----	---------------------	----

Chapter 2. Case Mechanical Operation

2-1	How to open the top panel	02
2-2	5.25" device installation	03
	2-2-1 CD-ROM installation	03
	2-2-2 5.25" accessory drive installation	06
2-3	HDD installation	08
	2-3-1 Install HDD on the HDD rack	08
	2-3-2 Install HDD on the side of optical drivetray ..	09
2-4	Installing 3.5" device	10
2-5	Installing Power Supply	11
2-6	Installing graphics and PCI expansion cards	12
2-7	Installing Coolant tubes	13
2-8	Installing 60mm fan	13
2-9	How to open the front panel	14



Chapter3 Motherboard & Leads Installation

3-1	Motherboard Installation	15
3-2	Case LED connections	16
3-3	USB 2.0 & IEEE 1394 Firewire Connection	17
3-4	Audio Connection	18

Chapter4 Other

4-1	Recommended Products	20
-----	----------------------------	----

Chapter 1. Product Introduction Specification

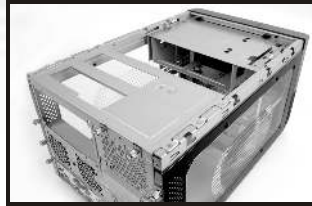
	VF600BWS	VF600BNS
Model		
Case Type	Gaming Cube	
Dimension (W*D*H)	300 x 430 x 230 mm 11.8 X 16.9 X 9.05 inch	
Window side panel	Window	N/A
Material	SECC Japanese steel	
Color	Black	
Cooling System	-Front: 90mm fan with blue LED x 1, 1500rpm -Rear: 60mm fan x 2, 1800rpm (up to 60mm fan x 3)	- Front : 90mm fan x 1, 1500rpm - Rear : 60mm fan x 2, 1800rpm (up to 60mm fan x 3)
Motherboard	Micro ATX form factor & mini ITX form factor	
Drive Bays	- 5.25" x 2 - 3.5" x 3 (Exposed x 1, Hidden x 2)	
Front I/O	USB 2.0 x 4, IEEE 1394 Firewire, HD-Audio	
Expansion Slots	4	
Weights	6.1 kg / 13.45 lb	6.3 kg / 13.89 lb



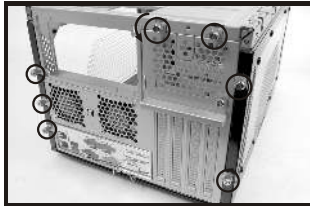
2-1 How to open the top panel



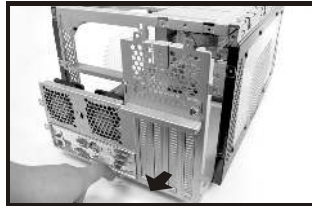
1 Unscrew the 3 screws shown to open the top panel.



2 Pull back the top panel as shown to loosen the panel.

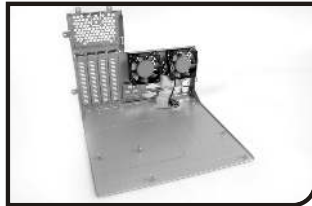


3 Unscrew the 7 screws shown to unlock the motherboard tray.



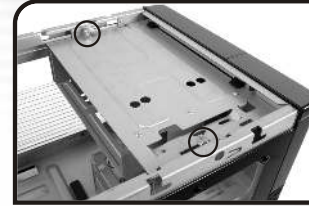
4 Tug on the ring and pull back as shown to remove the motherboard tray.

5 The motherboard tray

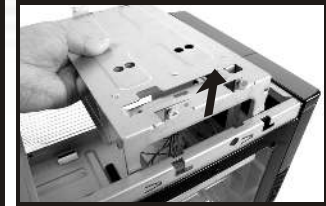
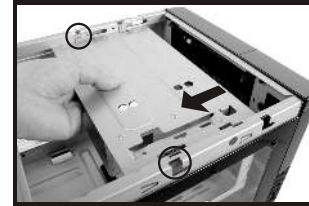


2-2 5.25" device installation

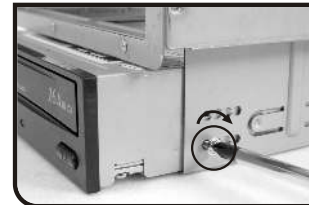
2-2-1 CD-ROM installation



1 Unscrew the 2 screws as shown to slide back the optical drive tray.

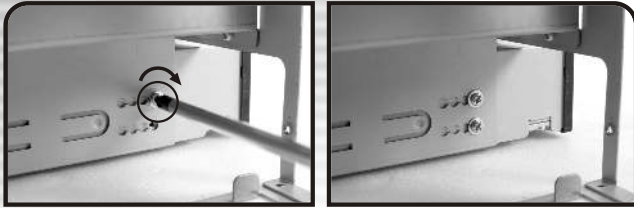


2 Pull back, then pull up to remove the optical drive tray.



3 When installing optical drives, it is recommended to screw into the No.4 hole as shown for a flush installation.

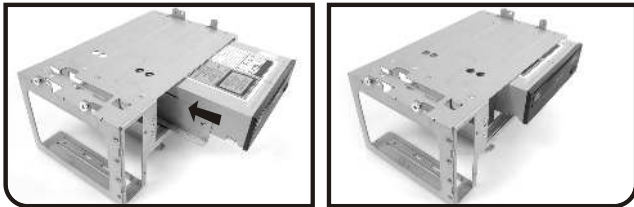




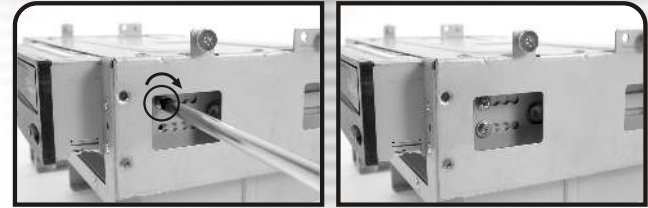
4 Screw in the optical drive on the opposing side.



5 When installing an optical drive on the top bay, please install the metal adaptor first as shown.



6 Slide in the optical drive from the front.



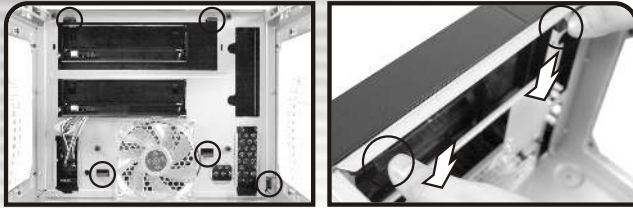
7 Secure the optical drive on the opposing side of No.4 hole as well.



8 Secure the top optical drive bay as shown.



2-2-2 5.25" accessory drive installation



1 There are five springs in the front panel, push to release it.

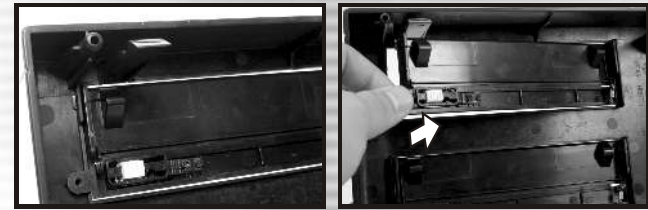


2 Push and release the five springs of front panel.

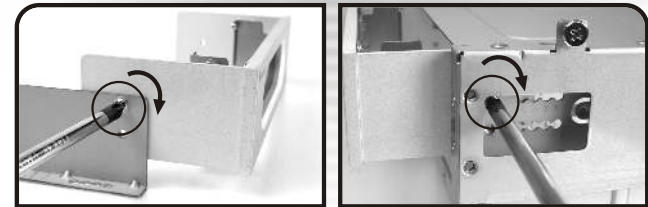


3 After loosening the spring of front panel, pull out it as arrow shows.

4 Unscrew the 5.25" bay cover screw as shown.



5 Remove the 5.25" bay cover as arrow shows.



6 When installing a 5.25" accessory drive on the top bay, please install the metal adaptor first as shown. Screw in the 5.25" accessory drive on the opposing side of the No.5 hole.



7 Screw the top optical drive bay as shown.

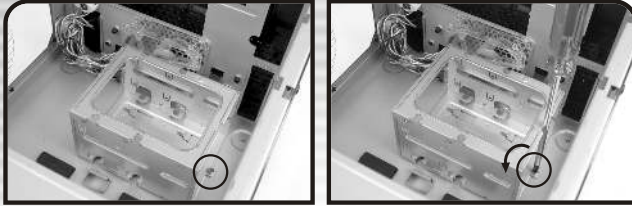


8 Please make sure the 5.25" accessory drive is flush with the front panel.

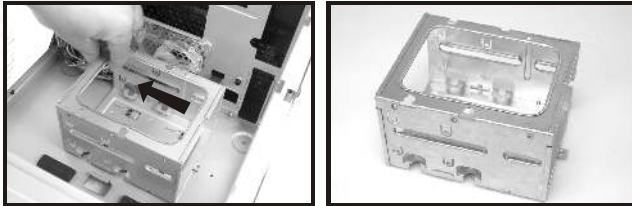


2-3 HDD installation

2-3-1 Install HDD on the HDD rack



1 Unscrew the screw shown to remove the HDD rack.



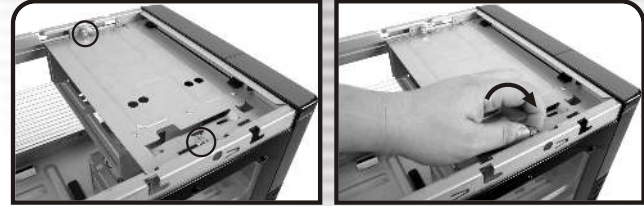
2 Slide over the HDD rack as shown to remove.

3 The HDD rack.

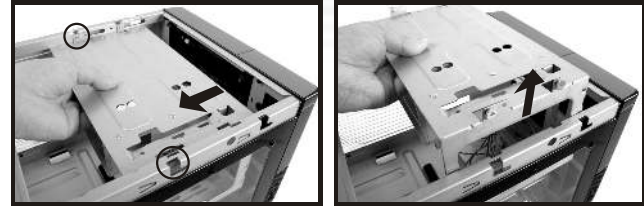


4 Secure HDDs using screws when installing in the HDD rack.

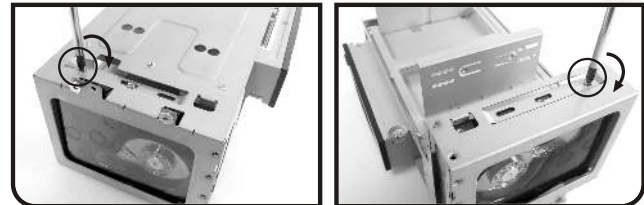
2-3-2 Install HDD on the side of optical drive tray



1 Unscrew the 2 screws as shown to slide back the optical drive tray.



2 Pull back, then pull up to remove the optical drive tray.

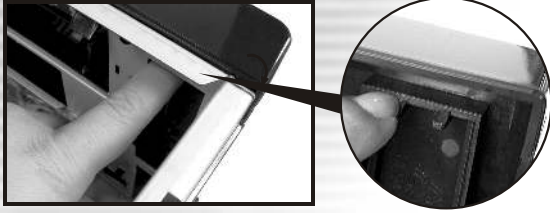


3 A HDD can be installed on the side by securing 4 screws.

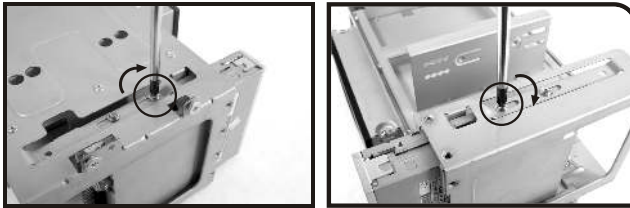
4 Screw in both sides of the HDD.



2-4 Installing 3.5" device



- 1 If a floppy drive is to be installed, please remove the bay cover first.

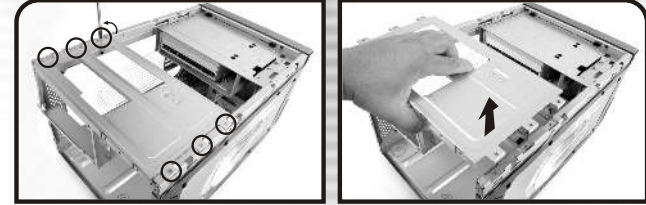


- 2 Secure the floppy drive using screws then screw the opposing side as shown.



- 3 Please make sure the floppy drive is flush with the front panel.

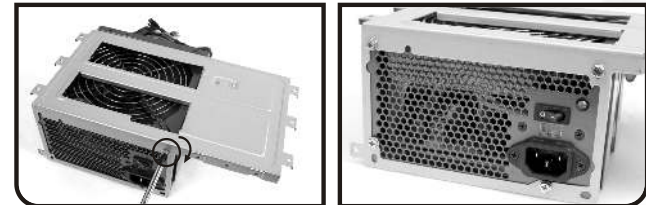
2-5 Installing power supply



- 1 Unscrew the 6 screws holding in the top power supply tray.
- 2 Lift out the power supply tray as shown.



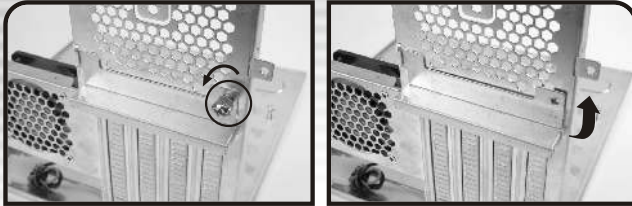
- 3 The power supply tray.



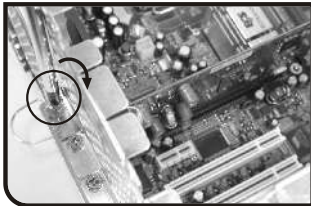
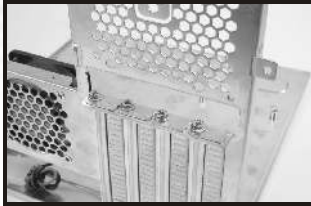
- 4 Install the power supply unit onto the power supply tray as shown. If using a power supply with a 120mm fan, please make sure the fan is exposed on the top side.



2-6 Installing graphics and PCI expansion cards

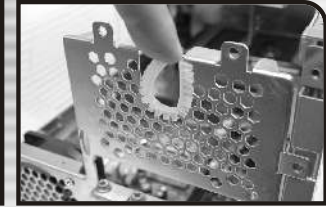
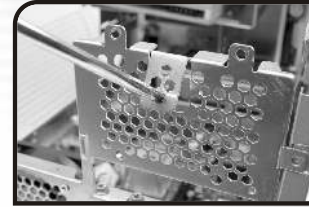


- 1 Remove the screw as shown to install graphics and PCI expansion cards.



- 2 When installing a graphic or PCI expansion card, please screw on the card as shown.

2-7 Installing coolant tubes

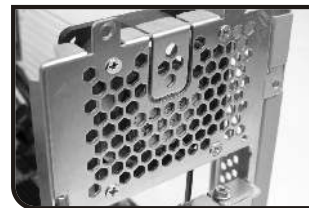


- 1 If a liquid cooling system is to be installed, please pry off the top tab of the motherboard tray as shown.
- 2 Please install the rubber tube protector as shown.



- 3 Coolant tubes may be installed as shown when using a liquid cooling system (optional).

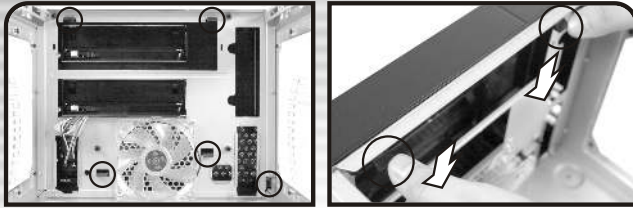
2-8 Installing 60mm fan



- 1 An optional 60mm fan can be purchased and installed on the motherboard tray as shown.



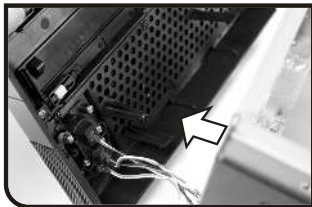
2-9 How to open the front panel



1 There are five springs in the front panel, push to release it.



2 Push and release the five springs of front panel.



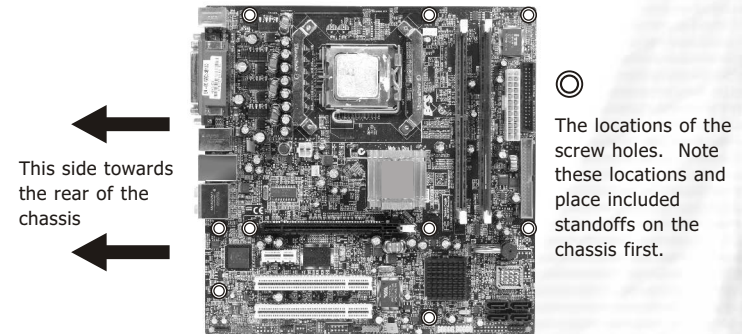
3 After loosening the spring of front panel, pull out it as arrow shows.

3-1 Motherboard Installation

Each motherboard has different standoff layout. It is highly suggested that you refer to your motherboard's manual when installing motherboard into the Case. The cases are applicable with Standard Micro ATX and mini ITX motherboards. Your motherboard may require a special I/O Panel, which should be included with your motherboard.

Placement Direction:

When installing the motherboard, make sure you follow the direction provided by your motherboard manufacturer. On most standard motherboards, the edge with external ports goes to the rear part of the chassis. It is highly recommended that you install CPU, heat sink and modular components before fixing the motherboard inside the chassis.



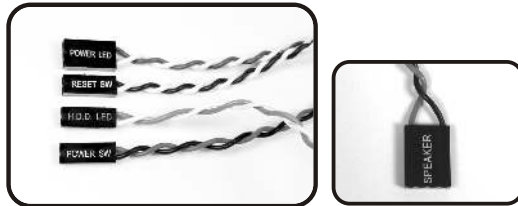
Above illustration is a sample of what the motherboard's layout. For more detail screw hole placement, please refer to your motherboard manual.



3-2 Case LED connections

On the front of the case, you can find some LEDs and switch leads (POWER SW*1, POWER LED*1, H.D.D. LED*1, RESET SW*1) Please consult user manual of your motherboard manufacturer, then connect these leads to the panel header on the motherboard. These leads are usually labeled; if not, please trace them back to the case front to find out their source.

- **POWER LED** connects to your M/B at the PLED
- **POWER SW** connects to the PWR connector on the motherboard.
- **H.D.D LED** connects to the eSATA connector shown as picture(3.5)
- **RESET SW** connects to the RSW connector on the motherboard
- **SPEAKER** connector: find out the 4-pin labeled SPEAKER on the M/B then connect it.

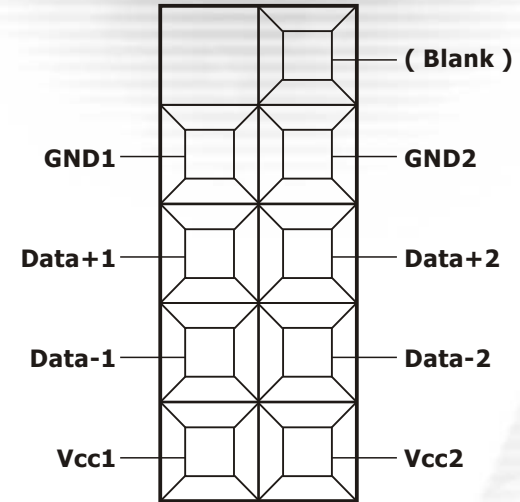


3-3 USB 2.0 & IEEE 1394 Firewire Connection

USB connection

Please consult your motherboard manual to find out the section of "USB connection".

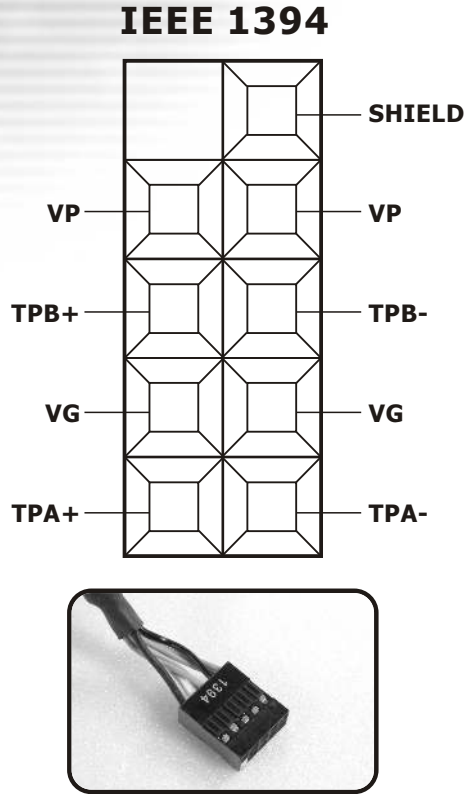
USB2.0



3-4 Audio Connection ●●●●

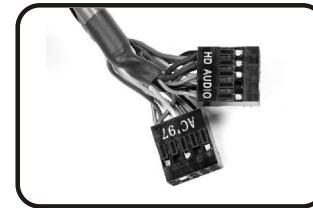
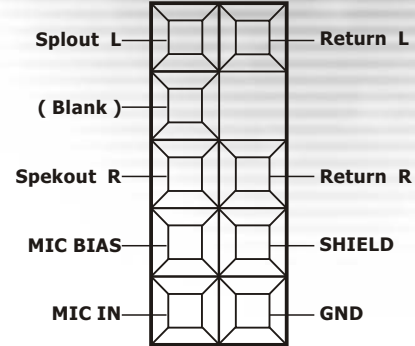
IEEE1394 Firewire connection

Please consult your motherboard manual to find out the section of "IEEE1394 Firewire connection".

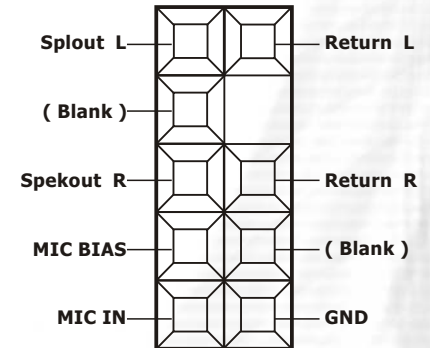


Please check your motherboard ,does it support AC'97 or HD-Audio(AZALIA) , choose one of them to connect.

HD AUDIO(AZALIA)



AC'97



4-1 Recommended Products

Purepower 450W

P/N:W0152

- Intel ATX 12V 2.2 Compatible.
- Supports one PCI-Express, 2 S-ATA, and 20+4 pin connector.
- Modularized Cable Management eliminates clutter and improve airflow inside the case.
- Super quiet and stable 14cm ball bearing fan.
- Built in industrial-grade Protections: Over Current, Over Voltage, and Short-Circuit.
- Safety / EMI : UL, CUL, TUV, FCC and CE certification.
- Shorter cable sets reduce clutter in the chassis
- The cable length for 24pin, CPU 4pin are 300mm and Molex, S-ATA are 200mm.
- All cables wrapped with flexible mesh.



Blue orb II P/N:CL-P0257

- Tt Patent designed Radian crotched fin design.
- Copper core construction.
- Max.fin count:140 fins.
- Silent Blue LED fan,1700rpm, 17dBA
- Universal design for Intel Socket LGA775 & AMD Socket K8.



There are recommended products of Thei
it is divided into standard, VR and specialty power supply unit.
Please refer to <http://www.thermaltake.com>

