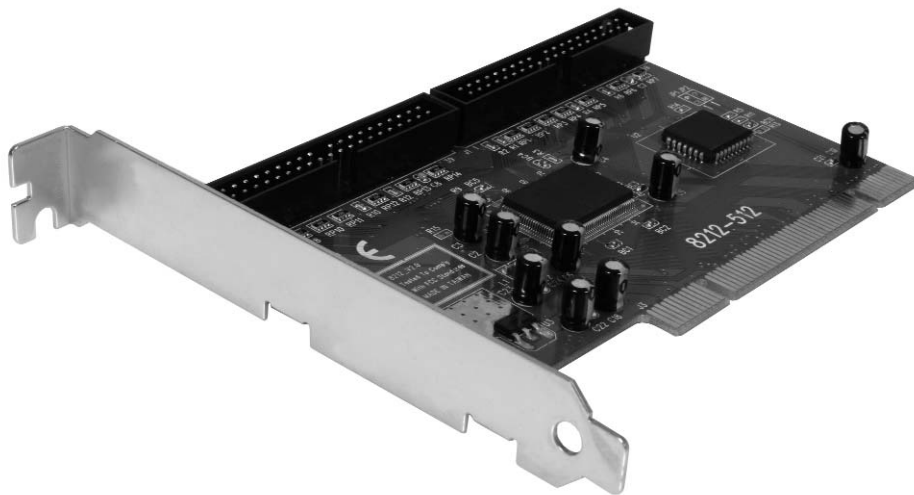


IDE ATA/133 Controller

2 Port PCI ATA-133 IDE Adapter Card

PCIIDE2

Instruction Manual



Actual product may vary from photo

StarTech.com

The Professionals' Source for Hard-to-Find Computer Parts

FCC Compliance Statement

This equipment has been tested and found to comply with the limits for a Class B digital device, pursuant to part 15 of the FCC Rules. These limits are designed to provide reasonable protection against harmful interference in a residential installation. This equipment generates, uses and can radiate radio frequency energy and, if not installed and used in accordance with the instructions, may cause harmful interference to radio communications. However, there is no guarantee that interference will not occur in a particular installation. If this equipment does cause harmful interference to radio or television reception, which can be determined by turning the equipment off and on, the user is encouraged to try to correct the interference by one or more of the following measures:

- Reorient or relocate the receiving antenna.
- Increase the separation between the equipment and receiver.
- Connect the equipment into an outlet on a circuit different from that to which the receiver is connected.
- Consult the dealer or an experienced radio/TV technician for help.

Use of Trademarks, Registered Trademarks, and other Protected Names and Symbols

This manual may make reference to trademarks, registered trademarks, and other protected names and/or symbols of third-party companies not related in any way to StarTech.com. Where they occur these references are for illustrative purposes only and do not represent an endorsement of a product or service by StarTech.com, or an endorsement of the product(s) to which this manual applies by the third-party company in question. Regardless of any direct acknowledgement elsewhere in the body of this document, StarTech.com hereby acknowledges that all trademarks, registered trademarks, service marks, and other protected names and/or symbols contained in this manual and related documents are the property of their respective holders.

Table of Contents

Introduction	1
Features	1
Before You Begin	1
System Requirements	1
Contents	1
Installation	2
Installing the Card	2
Windows 98/98SE/ME	3
Windows 2000/XP	4
Windows NT	6
Troubleshooting	7
Specifications	8
Accessory Products from StarTech.com	9
Technical Support	10
Warranty Information	10

Introduction

Thank you for purchasing a StarTech.com ATA/133 IDE controller card. This product is perfect for adding additional hard drives and other IDE/ATAPI compliant devices to a computer that does not have any available IDE connections, replacing a failed onboard IDE controller, or upgrading a computer to take advantage of ATA/133 speeds.

Features

- Two independent DMA/ATA channels
- Compliant with PCI Specification rev. 2.2, PCI ATA Controller Specification rev 1.0
- Supports up to four DMA/ATA devices
- 256 Bytes buffer

Before You Begin

WARNING! PCI cards, like all computer equipment, can be severely damaged by static electricity. Be sure that you are properly grounded before opening your computer case or touching your PCI card. StarTech.com recommends that you wear an anti-static strap when installing any computer component. If an anti-static strap is unavailable, discharge yourself of any static electricity build-up by touching a large grounded metal surface (such as the computer case) for several seconds. Also be careful to handle the PCI card by its edges and not the gold connectors.

System Requirements

- A Pentium-based computer with an available PCI slot
- Windows (98SE, ME, NT, 2000, XP) Linux

Contents

This package should contain:

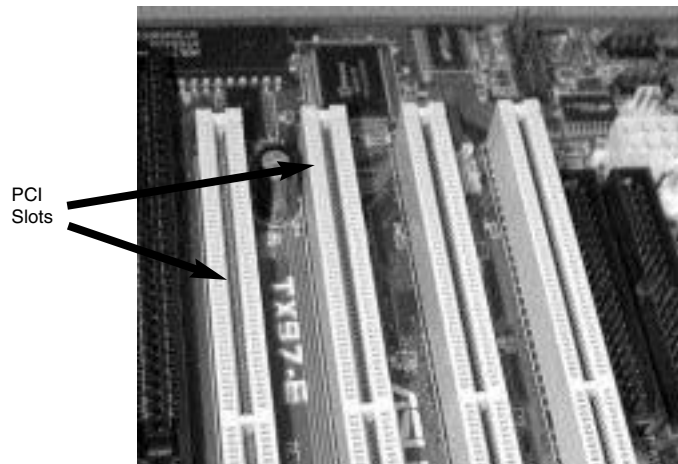
- 1 x PCI ATA/133 IDE PCI Controller Card
- 1 x 40-pin, 80-wire IDE Data Cable
- 1 x Driver CD
- 1 x Installation Guide

Installation

This section will guide you through the installation of your card. Please read through the instructions carefully and complete each step in the order listed.

If you are using Windows 98, 98SE, or ME, please follow the software installation instructions on the next page before installing the card. Other users can install the card now before completing the software installation.

Installing the Card



1. Make sure that your system is unplugged and you are grounded.
2. Remove the cover of your system (see your computer's user manual for details, if necessary) and gently turn your computer onto its side.
3. Locate an empty PCI slot (usually white in color) and remove the metal plate that covers the rear bracket. You may need a Phillips screwdriver to perform this step. **Retain the screw!** You will need it to secure the card later.
4. Gently insert the card into the empty slot, making sure it is firmly seated.
5. Secure the card in place using the screw you removed in Step 3.
6. Install the devices you wish to use with the card into the case following the instructions provided in their documentation.
7. Use the 80-wire IDE cable (provided) to attach the devices you are using to the controller. Be sure to observe master/slave settings, and that the red stripe on the cable faces pin 1 on the connectors for both the card and the device. If you are attaching more than two devices to the controller, you will need to purchase an additional IDE cable.

NOTE: The primary master device on the card must be a hard disk.

6. Put the computer case back on.

Software Installation

Windows 98/98SE/ME

1. Power on the host computer, and ensure that Windows is fully booted (desktop is visible)

2. Windows will detect that **ITE IT8212 ATA PCI Controller** has been connected, and will launch the **Add New Hardware Wizard**. Select **Specify the location of the driver (Advanced)** and click **Next**:



2. Insert the Driver CD into the CD-ROM/DVD-ROM drive, then select **Search for the best driver for your device (Recommended)** and type **D:\WIN98_ME** in the field designating the file location. Press **Next** to continue setup.

3. Once Windows notifies you that the driver for **ITE IT8212 ATA PCI Controller** has been found, press **Next** to continue setup.

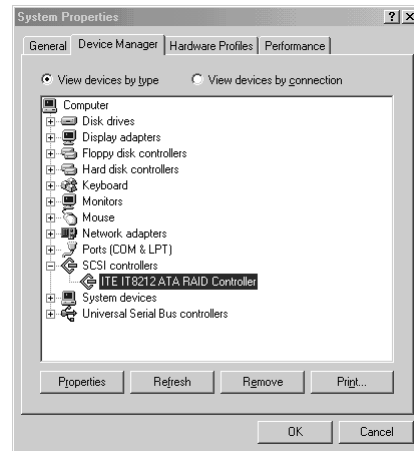


4. Once the driver installation has completed, click **Finish** to continue:



5. You will be asked to restart your computer. Please do so, to allow the driver installation to take effect.

- Once the computer has rebooted, you may want to verify that installation has successfully completed. To do so, right-click on **My Computer** and select **Manage**. On the left side of the window that opens, click on **Device Manager**. Click on the **[+]** sign next to **SCSI Controllers**, where you should notice **ITE IT8212 ATA PCI Controller** listed, indicating that installation was successful.



Windows 2000/XP

Please note: Installation steps for Windows 2000 and Windows XP will very similar if not identical. The following instructions are based on Windows 2000, but apply to Windows XP installation as well:

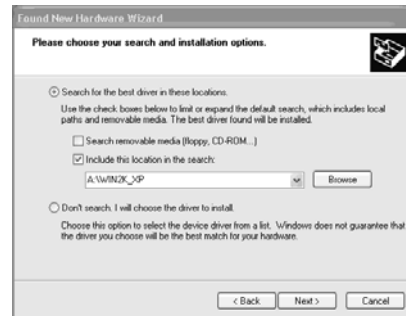
- Power on the host computer, and ensure that Windows is fully booted (desktop is visible)
- Windows will detect that **ITE IT8212 ATA PCI Controller** has been connected, and will launch the **Add New Hardware Wizard**. Select **Search for a suitable driver for my device (recommended)**, and click **Next** to continue setup.

- Insert the Driver CD into the CD-ROM/DVD-ROM drive, and select **Install from a list or specific location**. In the dialog and click **Next** to continue setup:



Instruction Manual

- In the dialog box provided, type **D:\WIN2K_XP** to indicate the proper file location. Click on **Next** to continue setup.



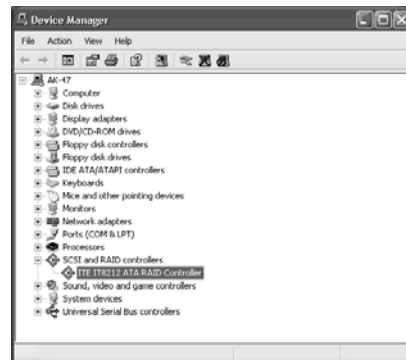
- When Windows indicates that the correct driver has been located, click on **Next** to continue setup.



- When you are notified that the **Found New Hardware Wizard** has finished installing the drivers for **ITEIT8212 ATA PCI**, click **Finish** to continue, and restart the computer for the installation to take effect:

- Once the computer has rebooted, you may want to verify that installation has successfully completed. To do so, right-click on **My Computer** and select **Manage**. On the left side of the window that opens, click on **Device Manager**. Click on the **[+]** sign next to **SCSI and RAID Controllers**, where you should notice **ITE IT8212 ATA PCI Controller** listed, indicating that installation was successful.

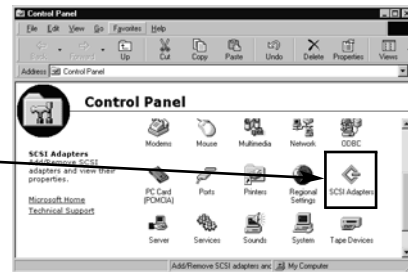
If there is a **?** or **!** symbol next to the **ITE IT8212 ATA PCI Controller**, it indicates that the driver has not installed correctly. If this is the case, please remove the device and reinstall.



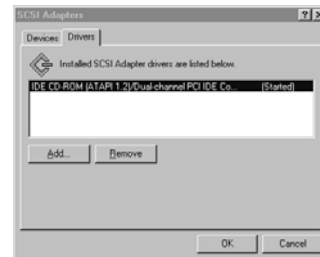
Windows NT

1. Power on the host computer, and ensure that Windows is fully booted (desktop is visible)
2. Click on the **Start** button, select **Settings**, and choose **Control Panel**.

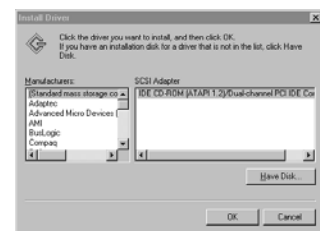
3. In the **Control Panel**, double-click on the **SCSI Adapters** icon.



4. From the SCSI Adapters window, choose the **Drivers** tab, and press **Add** to continue.



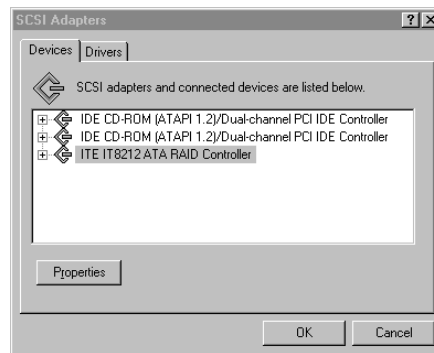
4. From the **Install Drivers** window, click on **Have Disk**. Insert the Driver CD, and type **D:\WINNT (CDROM)** in the field designating the file location. Press **OK** to continue setup.



5. Select **ITE IT8212 ATA PCI Controller** and click **OK** to continue.

6. When you are instructed to reboot the computer, please do so, for the driver installation to take effect.

7. Once the computer has rebooted, you may want to verify that installation has successfully completed. To do so, revisit the **Control Panel**, and open the **SCSI Adapters** window. If **ITE IT8212 ATA PCI Controller** is displayed in the **Devices** panel as shown below, the driver has been installed successfully:



Troubleshooting

Q: When the computer is powered on, no video appears on the screen or the floppy drive light stays on and the drive doesn't work.

A: The cable may be plugged in backwards. Make sure the cable is plugged in correctly. This is done by examining the cable to confirm the red stripe is aligned with **Pin 1** on both ends.

Q: When I boot up my computer, I receive an "HDD Controller failure" message.

- A:**
- 1)First, make sure the port is enabled.
 - 2)If the port is enabled, check that all cables are connected properly, including the power cable.
 - 3)Verify that no equivalent drive controller is active in the BIOS.

Specifications

Bus Type	PCI 5V / 3.3V 32 Bit
Connectors	2 x IDC 40 Male
Maximum Data Transfer rate	133 Mbps
Chipset	IT8212F
OS Support	Windows NT/98/ME/2000/XP/2003/Vista and Linux
Other Specs	<p>Compatible with the ATA/ATAPI-6 specification</p> <p>Supports: ANSI ATA proposal PIO Modes 0,1,2,3,4 with flow control, DMA Modes 0,1,2 and Ultra DMA modes 0,1,2,3,4,5,6</p> <p>512 bytes FIFO for data transfer per IDE channel</p>

Accessory Products from StarTech.com

Contact your local StarTech.com dealer or visit www.startech.com for cables or other accessories that will help you get the best performance out of your new product.



IDE100RND18
18 inch Round ATA 100/133 IDE cable



IDE100RND24
24 inch Round ATA 100/133 IDE Cable



IDE100RND36
36 inch Round ATA 100/133 IDE Cable



IDE100TPO18
18 In. Ultra ATA 33/66/100/133 TPO Internal IDE Cable

Technical Support

StarTech.com's lifetime technical support is an integral part of our commitment to provide industry-leading solutions. If you ever need help with your product, visit **www.startech.com/support** and access our comprehensive selection of online tools, documentation, and downloads.

Warranty Information

This product is backed by a lifetime warranty. In addition, StarTech.com warrants its products against defects in materials and workmanship for the periods noted, following the initial date of purchase. During this period, the products may be returned for repair, or replacement with equivalent products at our discretion. The warranty covers parts and labor costs only. StarTech.com does not warrant its products from defects or damages arising from misuse, abuse, alteration, or normal wear and tear.

Limitation of Liability

In no event shall the liability of StarTech.com Ltd. and StarTech.com USA LLP (or their officers, directors, employees or agents) for any damages (whether direct or indirect, special, punitive, incidental, consequential, or otherwise), loss of profits, loss of business, or any pecuniary loss, arising out of or related to the use of the product exceed the actual price paid for the product.

Some states do not allow the exclusion or limitation of incidental or consequential damages. If such laws apply, the limitations or exclusions contained in this statement may not apply to you.

About StarTech.com

StarTech.com is "The Professionals' Source for Hard-to-Find Computer Parts". Since 1985, we have been providing IT professionals with the quality products they need to complete their solutions. We offer an unmatched selection of computer parts, cables, server management solutions and A/V products and serve a worldwide market through our locations in the United States, Canada, the United Kingdom and Taiwan.