

# SATA and IDE Drive Controller Card

## 2 SATA + 1 IDE Drive PCI Controller Card

PCISAT2IDE1

Instruction Manual



Actual product may vary from photo

**StarTech.com**

The Professionals' Source for Hard-to-Find Computer Parts

## **FCC Compliance Statement**

This equipment has been tested and found to comply with the limits for a Class B digital device, pursuant to part 15 of the FCC Rules. These limits are designed to provide reasonable protection against harmful interference in a residential installation. This equipment generates, uses and can radiate radio frequency energy and, if not installed and used in accordance with the instructions, may cause harmful interference to radio communications. However, there is no guarantee that interference will not occur in a particular installation. If this equipment does cause harmful interference to radio or television reception, which can be determined by turning the equipment off and on, the user is encouraged to try to correct the interference by one or more of the following measures:

- Reorient or relocate the receiving antenna.
- Increase the separation between the equipment and receiver.
- Connect the equipment into an outlet on a circuit different from that to which the receiver is connected.
- Consult the dealer or an experienced radio/TV technician for help.

## **Use of Trademarks, Registered Trademarks, and other Protected Names and Symbols**

This manual may make reference to trademarks, registered trademarks, and other protected names and/or symbols of third-party companies not related in any way to StarTech.com. Where they occur these references are for illustrative purposes only and do not represent an endorsement of a product or service by StarTech.com, or an endorsement of the product(s) to which this manual applies by the third-party company in question. Regardless of any direct acknowledgement elsewhere in the body of this document, StarTech.com hereby acknowledges that all trademarks, registered trademarks, service marks, and other protected names and/or symbols contained in this manual and related documents are the property of their respective holders.

## Table of Contents

<b>Introduction</b> .....	<b>1</b>
Features .....	1
<b>Before You Begin</b> .....	<b>1</b>
System Requirements .....	1
Contents .....	1
<b>Installation</b> .....	<b>2</b>
Installing the PCI Card .....	2
Installing the drivers .....	2
<i>Windows 2000 / XP / Server 2003</i> .....	2
<i>Windows 98SE/ME</i> .....	4
Verifying Installation .....	4
<b>Installing the RAID software (optional)</b> .....	<b>5</b>
<b>Specifications</b> .....	<b>6</b>
<b>Technical Support</b> .....	<b>6</b>
<b>Warranty Information</b> .....	<b>6</b>

## **Introduction**

Thank you for purchasing a StarTech.com SATA and IDE PCI Controller card, ideal for individuals using both IDE and SATA drives in the same system. This product allows you to connect two SATA drives on independent channels and up to two IDE devices on a single channel. Plus, with support for RAID 0, RAID 1 and JBOD, you can configure your hard drives to create an optimized storage solution.

## **Features**

- Supports RAID 0, RAID 1, and JBOD
- SATA data transfer rates of up to 150Mbps
- Ultra ATA-133 / IDE data transfer rate up to 133Mbps
- Compliant with PCI specification revision 2.2, and SATA 1.0 specification revision 1.0
- Supports Windows 98SE/ME/NT/2000/XP

## **Before You Begin**

### **System Requirements**

- A Pentium-based computer with an available PCI slot
- Operating system requirement: Windows 98SE, ME, NT, 2000, XP, 2003 Server

### **Contents**

This package should contain:

- PCI SATA and IDE Card (1)
- Driver CD (1)
- Instruction Manual (1)

## Installation

### Installing the PCI Card

1. Make sure that your system is unplugged and you are grounded.
2. Remove the cover of your system (see your computer's user manual for details, if necessary) and gently turn your computer onto its side, so that the PCI expansion slot openings on the motherboard are facing upwards.
3. Locate an empty PCI slot (usually white in color) and remove the metal plate that covers the corresponding rear bracket. You may need a Phillips screwdriver to perform this step. Retain the screw! You will need it to secure the card later.
4. Gently insert the card into the empty slot, making sure it is firmly seated.
5. Secure the card in place using the screw you removed in Step 3.
6. Replace and secure the computer cover.

### Installing the Drivers

#### Windows 2000 / XP / 2003 Server:

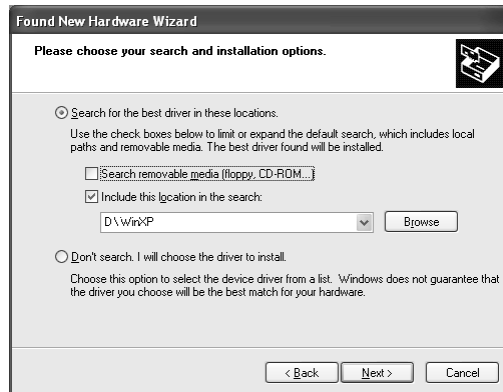
Following card installation, Windows will detect the presence of the card and initiate the software installation process.

1. After rebooting, the **Add New Hardware Wizard** will launch. Select **Install from a list or specific location (Advanced)** and click **Next** to continue setup:



## Instruction Manual

2. On the screen that follows, select **Search for the best driver in these locations**, and place a checkmark next to **Include this location in the search**. Enter **D:\WinXP** in the text box provided, and insert the Driver CD. Click **Next** to continue:



3. Windows will then verify that the drivers have been installed. Click **Finish** to complete software installation:



4. Upon completion, Windows will display the following dialog balloon, indicating that the new hardware has been detected, and will require rebooting. Please reboot Windows to conclude installation:

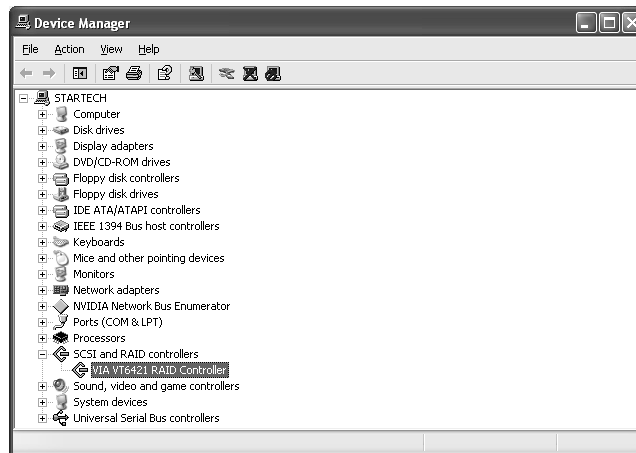


## Windows 98SE/ME

1. Following card installation, Windows will detect the presence of the card and initiate the software installation process.
2. Windows will detect the **VIA SATA PCI Controller** and launch the **Add New Hardware Wizard**. Select **Specify the location of the driver (Advanced)** and click **Next** to continue setup.
3. Insert the Driver CD into the CD/DVD-ROM drive, then select **Search for the best driver for this device (Recommended)**. Enter **D:\WIN9X** in the field designating the file location, and press **Next** to continue setup.
4. Windows will detect the driver for **VIA VT6421 RAID Controller**. Press **Next** to continue setup.
5. Once driver installation has finished, click on **Finish** to continue.
6. When asked to do so, please reboot the computer for the driver installation to take effect.

## Verifying driver installation

Once Windows has been rebooted following the installation of the drivers, verify that the card is properly installed by browsing to the **Device Manager** within the Windows **Control Panel**, and click on the [+] symbol next to **SCSI and RAID Controllers**. Here, you should see **VIA VT6421 RAID Controller** listed, if the installation was successful:



## Instruction Manual

### Installing the RAID software (optional)

The Driver CD that accompanies your purchase of PCISAT2IDE2 includes Via V-RAID software, which allows you to configure the installed drives using a variety of RAID applications. To install the Via V-RAID software:

1. Locate and double-click on the file entitled **Setup.exe** on the Driver CD. This will launch the installation utility. Click **Next** to continue:



2. On the screen that follows, select **I agree**, after reading the VIA Software License Agreement, and click **Next**:



3. Select both **VIA V-RAID Software Package V5.3** and **VIA V-RAID Config Utility 5.30** and click **Next**:





## Instruction Manual

4. The screen that follows asks that you confirm your selection. Click **Next** to continue:



5. Once the necessary files have been installed, another confirmation window will appear, confirming the successful installation of the V-RAID software. Click **Next** to continue:



6. Following the successful installation of the software, you will be prompted to reboot Windows. To conclude installation, please select **Yes, I want to restart my computer now**, and click **Finish**.



7. For instructions as to how to configure the VIA V-RAID Software, please consult the compiled HTML help file entitled **raid\_tool**, located on the Driver CD.

## Specifications

Bus Type	PCI
Connectors	SATA (2) Ultra ATA-133/IDE Interface (1)
Maximum Data Transfer Rate	150Mbps (SATA) 133Mbps (IDE)
Chipset	VIA VT6421A
OS Support	Windows 98SE/ME/NT/2000/XP
Regulatory Certifications	CE, FCC, ROHS

## Technical Support

StarTech.com's lifetime technical support is an integral part of our commitment to provide industry-leading solutions. If you ever need help with your product, visit [www.startech.com/support](http://www.startech.com/support) and access our comprehensive selection of online tools, documentation, and downloads.

## Warranty Information

This product is backed by a lifetime warranty. In addition, StarTech.com warrants its products against defects in materials and workmanship for the periods noted, following the initial date of purchase. During this period, the products may be returned for repair, or replacement with equivalent products at our discretion. The warranty covers parts and labor costs only. StarTech.com does not warrant its products from defects or damages arising from misuse, abuse, alteration, or normal wear and tear.

### Limitation of Liability

In no event shall the liability of StarTech.com Ltd. and StarTech.com USA LLP (or their officers, directors, employees or agents) for any damages (whether direct or indirect, special, punitive, incidental, consequential, or otherwise), loss of profits, loss of business, or any pecuniary loss, arising out of or related to the use of the product exceed the actual price paid for the product. Some states do not allow the exclusion or limitation of incidental or consequential damages. If such laws apply, the limitations or exclusions contained in this statement may not apply to you.

## **About StarTech.com**

StarTech.com is “The Professionals’ Source for Hard-to-Find Computer Parts”. Since 1985, we have been providing IT professionals with the quality products they need to complete their solutions. We offer an unmatched selection of computer parts, cables, server management solutions and A/V products and serve a worldwide market through our locations in the United States, Canada, the United Kingdom and Taiwan.

Visit **[www.startech.com](http://www.startech.com)** for complete information about all our products and to access exclusive interactive tools such as the Parts Finder and the KVM Reference Guide. StarTech.com makes it easy to complete almost any IT solution. Find out for yourself why our products lead the industry in performance, support, and value.