



16MB~2GB JetFlash™

User's Manual

Transcend

***Your Supplier, Your Partner,
Your Friend.***

Table of Contents

Introduction

Package Contents	1
Features	1
System Requirements.....	2
Before Use	2

Driver Installation

Driver Installation for Windows 98/98SE	3
Driver Installation for Windows Me, 2000, & XP	5
Driver Installation for Mac OS 8.6 or Later	5
Driver Installation for Linux Kernel 2.4 or Later	5

Uninstall

	6
--	---

How to Safely Unplug JetFlash

To Remove JetFlash in Windows 98/98SE	8
To Remove JetFlash in Windows Me, 2000, & XP.....	8
To Remove JetFlash in Mac OS	8
To Remove JetFlash in Linux.....	8

Write-Protect Function

	9
--	---

Boot-Up Function

System Requirements for Boot-Up Function.....	9
Boot-up Function for Windows 98/98SE, Me, & XP	9
mFormat Introduction	10
Create One Partition.....	12
Create Two Partitions.....	14

Security Function

Security Function for Windows 98/98SE, Me, 2000, & XP	17
Use of JetFlash with Security Function Enabled	19
How to Change the Password.....	21
When You Forget the Password.....	22

Specifications

	23
--	----

Ordering Information

	23
--	----

Warranty

Introduction

Thank you very much for purchasing Transcend's **JetFlash™**. This small device is designed to expedite exchanging huge amounts of data between any desktop or laptop computers with a USB port. With higher storage capacity and a much faster data transfer rate than other typical portable storage media, it can easily replace floppy diskettes and hard disks. In addition, its mobility, strong data retention ability, and impressive appearance will provide you a brand new experience.

Package Contents

The **JetFlash** package includes the following items:

- **JetFlash**
- Label
- Neck Strap
- Driver CD
- USB Extension Cable
- Quick Installation Guide

Features

- **USB Interface:** True Plug and Play connection for hot swap function
- **Expedited Data Transfer:** Transfer rate up to 12M bit/sec at Full Speed
- **Power Supply:** Powered directly via the USB port, no external power or battery needed
- **Operating Systems Supported:** No driver required for Windows® Me, Windows® 2000, Windows® XP, Mac™ OS 8.6 or later, and Linux™ kernel 2.4 or later. Only Windows® 98 and Windows® 98SE need the enclosed driver.
- **Write-Protect Function:** Write-protect switch provided
- **Security Function:** Password protection provided
- **Boot-Up Function:** Makes **JetFlash** a bootable disk in USB-ZIP or USB-HDD boot mode
- **LED:** Indicates usage status of **JetFlash**

System Requirements

Desktop or laptop computers with USB port

One of following operating systems:

- Windows 98/98SE
- Windows Me
- Windows 2000
- Windows XP
- Mac OS 8.6 or later
- Linux kernel 2.4 or later

Before Use

1. Please keep **JetFlash** away from heat, direct sunlight, and moisture. Do not bend, flex, or drop **JetFlash**.
2. To prevent data loss and/or damage to **JetFlash**, never remove **JetFlash** from the USB port while data is transferring.
3. Plug or unplug **JetFlash** by grasping the sides.

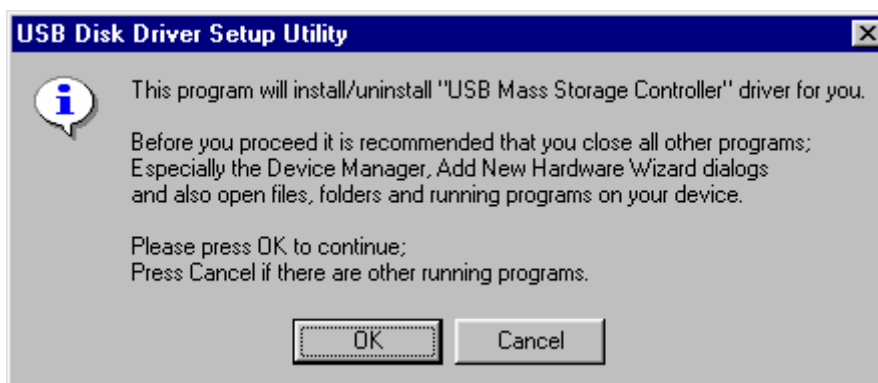
Driver Installation

Driver Installation for Windows 98/98SE

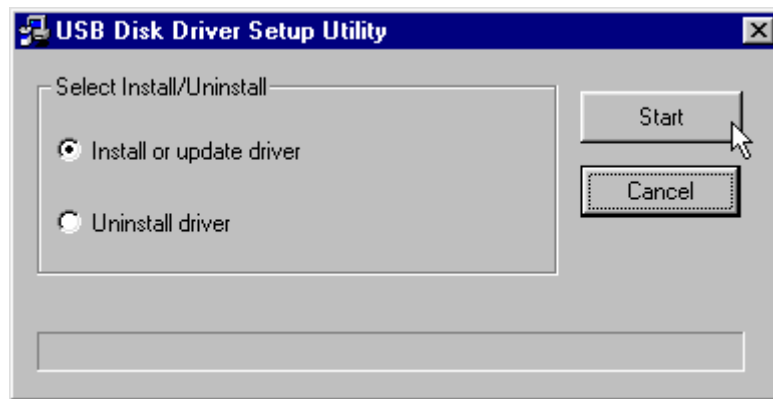
1. Put the Driver CD into the CD-ROM (auto-run supported). Click the **Win98 Driver** button.



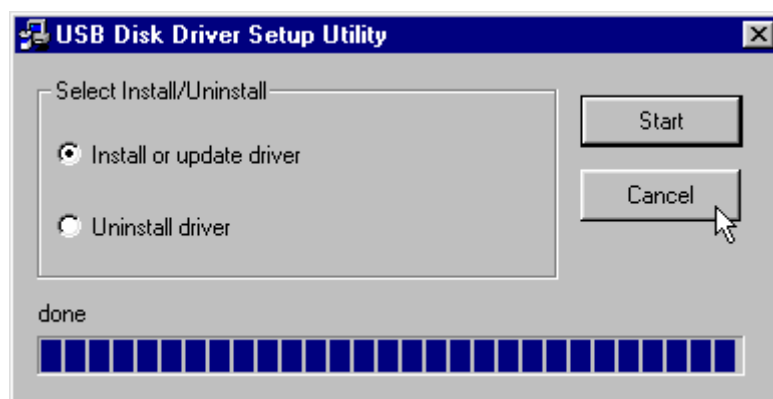
2. Click **OK** to continue.



3. Select **Install or update driver**. Click **Start** to continue.



4. After **Install or update driver** has been completed, click **Cancel**.



5. Plug **JetFlash** into an available USB port. Your computer will automatically detect this new device. You can find a new **Removable Disk** drive with a newly assigned drive letter in the **My Computer** window.



Driver Installation for Windows Me, 2000, & XP

No driver is required. These Windows operating systems have built-in drivers to support **JetFlash**. Simply plug **JetFlash** into an available USB port, and Windows will install the files needed to use your device. You will be able to find a new **Removable Disk** drive with a newly assigned drive letter in the **My Computer** window.

Driver Installation for Mac OS 8.6 or Later

No driver is required. Just plug **JetFlash** into an available USB port and your computer will automatically detect it.

Driver Installation for Linux Kernel 2.4 or Later

No driver is required. Just plug **JetFlash** into the USB port and mount it.

Example:

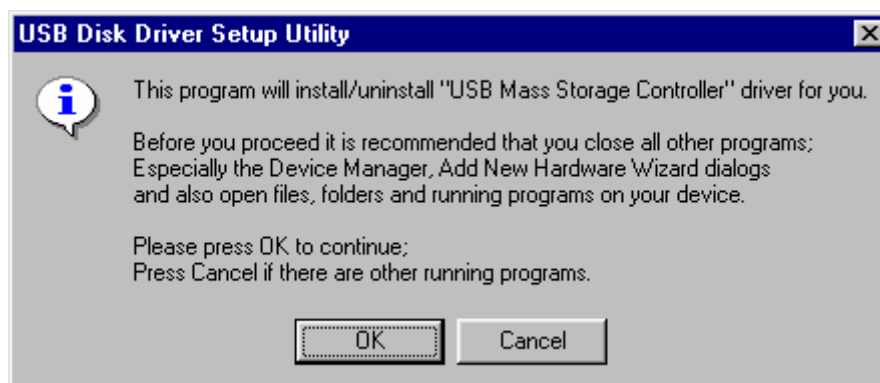
1. Create directory for **JetFlash** first
`mkdir /mnt/jetflash`
2. Mount **JetFlash**
`mount -a -t msdos /dev/sda1 /mnt/jetflash`

Uninstall

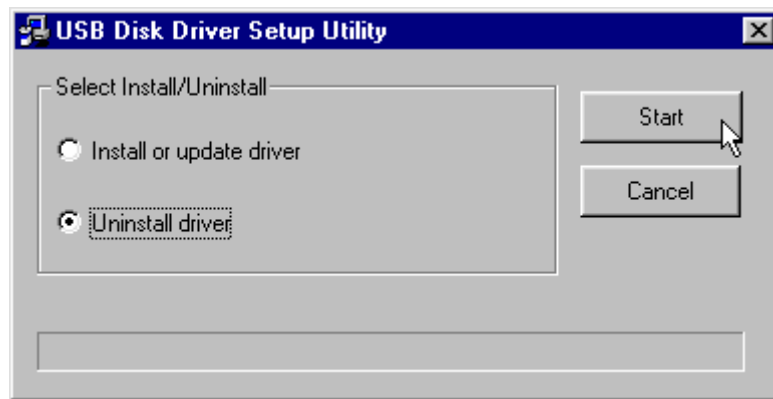
1. Put the Driver CD into the CD-ROM (auto-run supported). Click the **Win98 Driver** button.



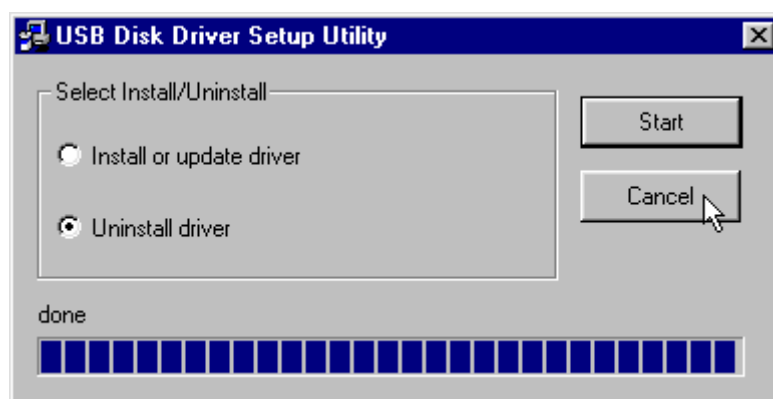
2. Click **OK** to continue.



3. Select **Uninstall driver**. Click **Start** to continue.



4. After **Uninstall driver** has been completed, click **Cancel**.



How to Safely Unplug JetFlash



Before removing **JetFlash**, please make sure the LED is not flashing! If you remove **JetFlash** while the LED is flashing, unpredictable damage to the files and/or **JetFlash** may occur.



If you don't follow the above procedure to remove **JetFlash**, data may be lost due to a write cache issue.

To Remove JetFlash in Windows 98/98SE

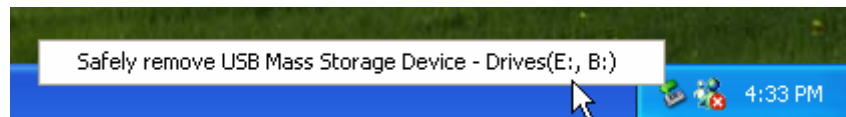
Unplug JetFlash from your system directly when data is not transferring.

To Remove JetFlash in Windows Me, 2000, & XP

1. Click the  icon on the system tray.



2. The **Safely remove USB Mass Storage Device** pop-up menu will appear. Click to continue.



3. The **'USB Mass Storage Device' device can now be safely removed from the system** message will appear. **JetFlash** is now ready to be unplugged.

To Remove JetFlash in Mac OS




Drag and drop the Disk icon corresponding to **JetFlash** into the trashcan. Then, unplug **JetFlash** from the USB port.

To Remove JetFlash in Linux

Un-mount the device from Linux environment.

Example: `umount /mnt/jetflash`

Write-Protect Function

When the Write-Protect switch is set to Unlocked “”, you can read/write data from/into **JetFlash**. When the Write-Protect switch is set to Locked “”, you can't write data into **JetFlash** or format it. You can only read data from **JetFlash**. Please set the switch to Unlocked “” before format.

Boot-Up Function

❖ **Boot-Up Function is not supported in Windows 2000**

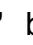
For systems that use Windows 98/98SE, Me, or XP, **JetFlash** can be configured to serve as an MS-DOS Startup Disk. Upon completion of the appropriate procedure for your operating system as described below, **JetFlash** can be used to boot-up your computer, allowing you to run MS-DOS programs. **JetFlash** can startup your computer by using USB-ZIP or USB-HDD boot up functions. This does not make **JetFlash** a Rescue Disk for Windows, or put Windows Startup files onto **JetFlash**. After booting with **JetFlash**, system is open on the MS-DOS command screen. If you wish to enter Windows, you must then start Windows from your hard drive or a previously created Rescue Disk.

System Requirements for Boot-Up Function

- A motherboard that supports **USB-ZIP** or **USB-HDD** as the **First Boot Device** in **BIOS**
- Windows 98/98SE
- Windows Me
- Windows XP

❖ The **USB-HDD** boot-up mode only support for Windows 98/98SE

Boot-Up Function for Windows 98/98 SE, Me, & XP

You must run the **mFormat** program on the Driver CD to enable this feature. Please make sure Write-Protect switch is set to Unlocked “” before executing **mFormat** program. This procedure will reformat the **JetFlash** and erase any data saved to the **JetFlash** memory. To avoid loss of data, please backup the files before proceeding. Put the Driver CD into the CD-ROM (auto-run supported) and click the **mFormat** button.



mFormat Introduction

Product Number, Drive Letter and Capacity

Disk 1 information.

Disk-Volume bar. Use it to make 2 partitions and adjust the capacity sizes. The minimum size is 2MB.

Disk 2 information.

Show Progress Status

Type of format

Quick: Scan all blocks. If there are any bad blocks, mark them as Bad and perform a DOS Format of **JetFlash**.

Full: Do a Surface Scan for a Write/Read Check. If there are any bad blocks, mark them as Bad and perform a DOS format of **JetFlash**.

Configure device only: Partition **JetFlash**, and setup password protection and boot-up information. A USB Disk DOS format will be executed and all data stored on **JetFlash** will be lost.

Configuration

Slide the **Disk-Volume** bar to adjust the disk size of **JetFlash**. You can make one disk or two disks by adjusting the volume sizes. The options will change automatically and enable the choice.

Make USB-ZIP startup disk:

When **Disk 1** size is set to be larger than 2MB. This option is able to choose and it can make **JetFlash** boot up as USB-ZIP mode. **mFormat** will copy boot up files into JetFlash and set up startup information during format.

Make USB-HDD startup disk: (Only for Windows 98/98SE)

When **Disk 1** size is set to be larger than 2MB. This option is able to choose and it can make **JetFlash** boot up as USB-HDD mode. **mFormat** will copy boot up files into JetFlash and set up startup information during format.

Enable password protection:

Choose this option to set up password during format. If you format as two disks, the Disk 1 is public disk and Disk 2 will be password protected.

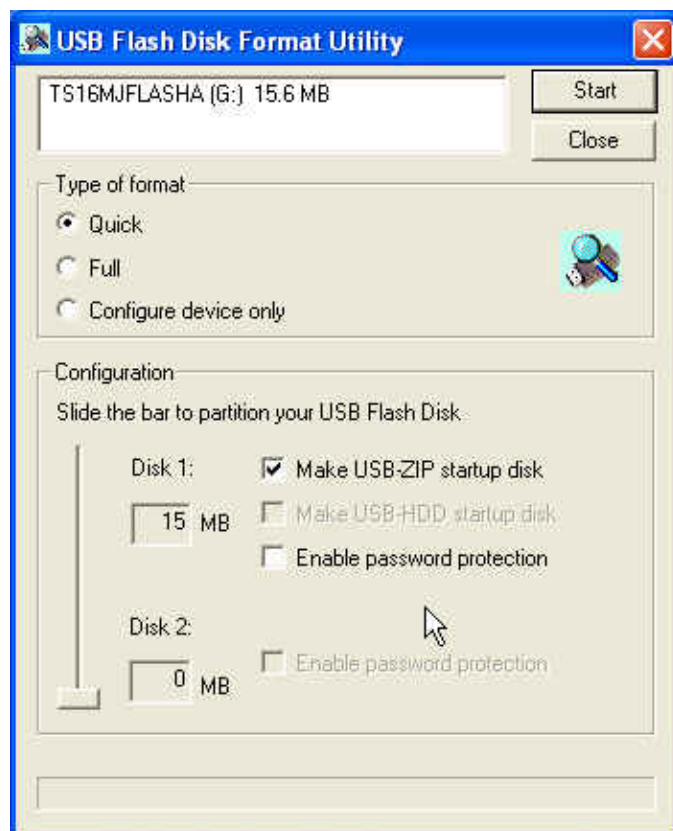
Create One Partition

Slide the **Disk-Volume** bar all the way down to set **Disk 1** size equal to the total capacity of **JetFlash**. **JetFlash** enable to set as **USB-ZIP** or **USB-HDD** boot up mode as below.

Option	Configuration	BIOS
1	Make USB-ZIP startup disk	USB-ZIP
2	Make USB-HDD startup disk	USB-HDD

Option 1: Make USB-ZIP startup disk

- Select format type (Quick, Full or Configure device only) and **Make USB-ZIP startup disk** option. Click **Start** to continue.



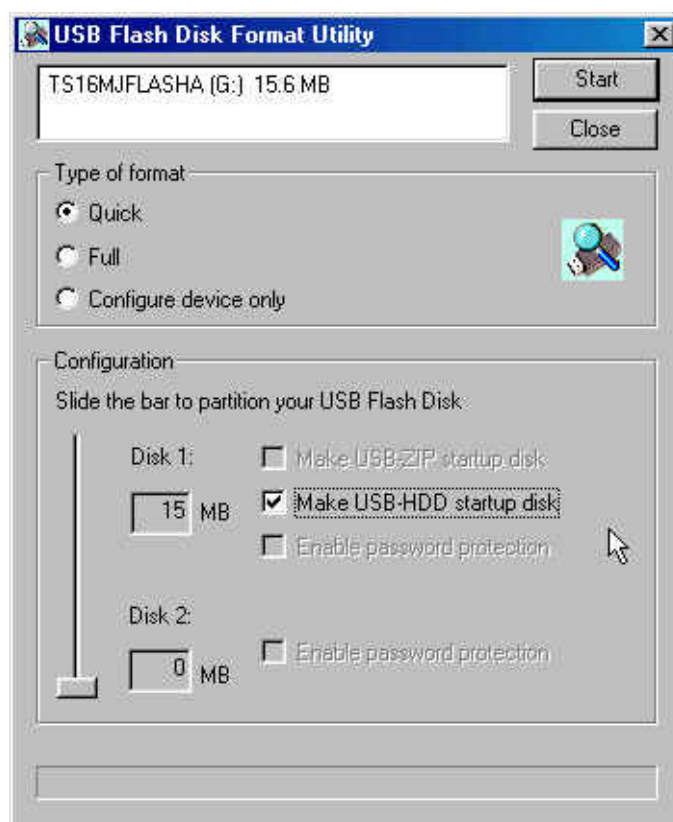
- After the completion of format, you need to re-plug JetFlash to enable the setting. Restart your computer and press the **Delete** key (or whatever key combination is correct for your computer) during boot-up to enter **Setup** (CMOS Setup Utility) to reconfigure **BIOS**.
- Within the **Advanced BIOS Features** menu, change **First Boot Device**

to **USB-ZIP**. **Save & Exit Setup**. Then at **SAVE to CMOS and EXIT (Y/N)?** Type **Y** and press **Enter**.

- d. Now, your system can boot from **JetFlash**. During boot-up, **JetFlash** will be assigned drive letter **A** (**A:\>** appears on the screen). If your computer has a Floppy Drive, it will be assigned drive letter **B**.
- e. You can see boot up files in **Removable Disk**. Please don't delete or move any of these files or boot-up function will fail.

Option 2: Make USB-HDD startup disk (Only for Windows 98/98SE)

- a. Select format type (Quick, Full or Configure device only) and **Make USB-HDD startup disk** option. Click **Start** to continue.



- b. After the **completion** of format, you need to re-plug JetFlash to enable the setting. Restart your computer and press the **Delete** key (or whatever key combination is correct for your computer) during boot-up to enter Setup (CMOS Setup Utility) to reconfigure **BIOS**.
- c. **Within the Advanced BIOS Features** menu, change **First Boot Device** to **USB-HDD**. **Save & Exit Setup**. Then at **SAVE to CMOS and EXIT (Y/N)?** Type **Y** and press **Enter**.
- d. Now, your system can boot from **JetFlash**. During boot-up, **JetFlash** will be assigned drive letter **C** (**C:\>** appears on the screen). If your

computer has a hard Drive, it will be assigned drive letter **D**.

- e. You can see boot-up files in **Removable Disk**. Please don't delete or move any of these files or boot up function will fail.

❖ **Enable password protection** cannot be set in this mode.

Create Two Partitions

Slide the **Disk-Volume** bar to adjust **Disk 1** size to fit your need. The configure options will change to proper choices by different **Disk 1** size. **JetFlash** enable to set as **USB-ZIP** or **USB-HDD** boot up mode as below.

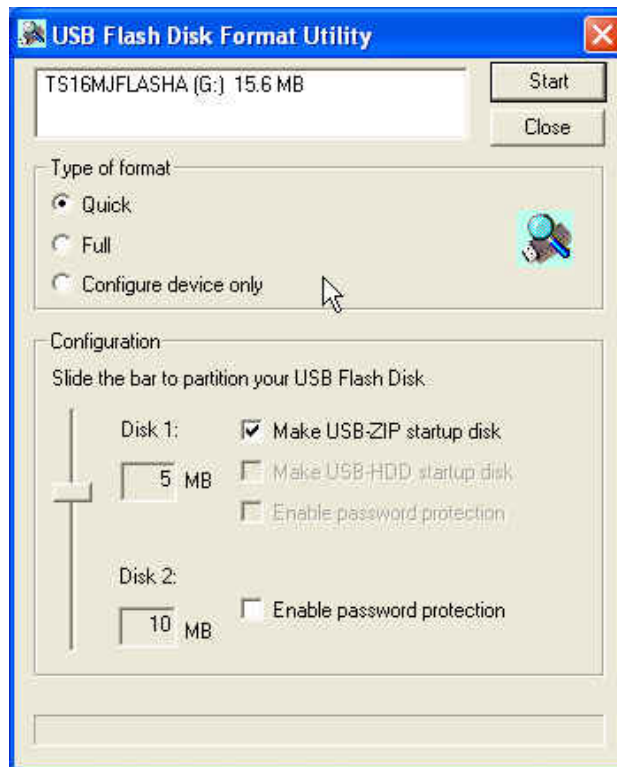
Option	Disk 1 Size	Disk 1 Configuration	Disk 2 Configuration	BIOS
1	>2 MB	Make USB-ZIP startup disk	Blank	USB-ZIP
2	>2 MB	Make USB-HDD startup disk	Blank	USB-HDD

- ❖ Windows 2000 cannot recognize the second partition. Please download the Win2000 Service Pack 3 from the Microsoft website and install it. Windows 2000 will then be able to recognize the second partition.
- ❖ Partitions can only be recognized on Mac computers that use Mac OS 10.1.5 or later.
- ❖ Even two partitions are created, only Disk 1 can be seen under MS-DOS prompt after boot up from **JetFlash**.
- ❖ When **Enable password protection** option is selected, Disk 1 will be public disk and Disk 2 will be password protected after format.

Option 1: Make USB-ZIP startup disk

- a. Select format type (Quick, Full or Configure device only) and set any size of Disk 1 and Disk 2 to fit your need. Select **Make USB-ZIP startup**

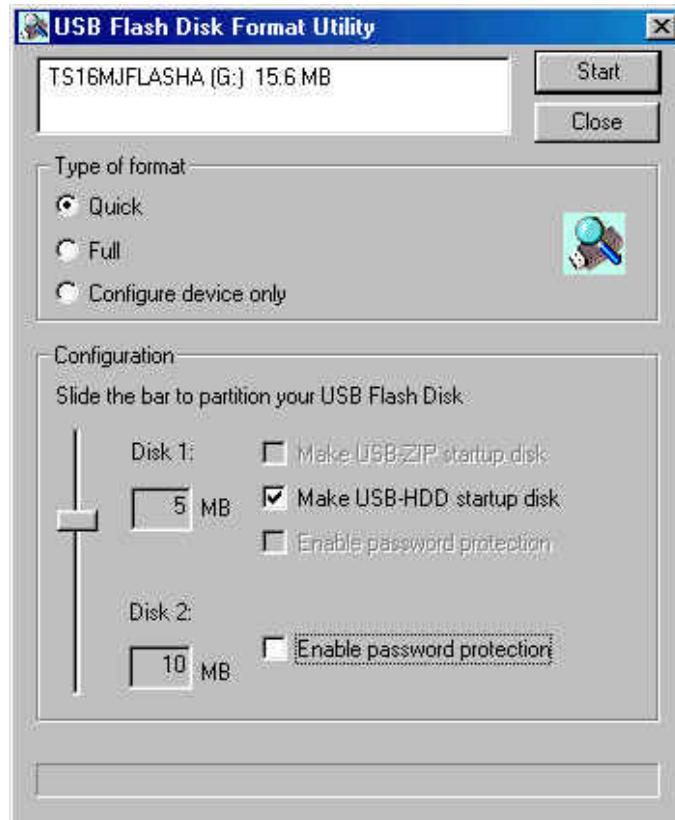
disk for Disk 1. Click **Start** to continue.



- b. After the **completion** of format, you need to re-plug JetFlash to enable the setting. Restart your computer and press the **Delete** key (or whatever key combination is correct for your computer) during boot-up to enter **Setup** (CMOS Setup Utility) to reconfigure **BIOS**.
- c. Within the **Advanced BIOS Features** menu, change **First Boot Device** to **USB-ZIP**. **Save & Exit Setup**. Then at **SAVE to CMOS and EXIT (Y/N)?** Type **Y** and press **Enter**.
- d. Now, your system can boot from **JetFlash**. During boot-up, **JetFlash** will be assigned drive letter **A** (**A:\>** appears on the screen). If your computer has a Floppy Drive, it will be assigned drive letter B.
- e. You can see boot up files in **Removable Disk**. Please don't delete or move any of these files or boot up function will fail.

Option 2: Make USB-HDD startup disk (Only for Windows 98/98SE)

- a. Select format type (Quick, Full or Configure device only) and set any size of Disk 1 and Disk 2 to fit your need. Select **Make USB-HDD startup disk** for Disk 1. Click **Start** to continue.



- b. After the **completion** of format, you need to re-plug JetFlash to enable the setting. Restart your computer and press the **Delete** key (or whatever key combination is correct for your computer) during boot-up to enter **Setup** (CMOS Setup Utility) to reconfigure **BIOS**.
- c. Within the **Advanced BIOS Features** menu, change **First Boot Device** to **USB-HDD**. **Save & Exit Setup**. Then at **SAVE to CMOS and EXIT (Y/N)?** Type **Y** and press **Enter**.
- d. Now, your system can boot from **JetFlash**. During boot up, **JetFlash** will be assigned drive letter **C** (**C:\>** appears on the screen). If your computer has a hard Drive, it will be assigned drive letter **D**.
- e. You can see boot up files in **Removable Disk**. Please don't delete or move any of these files or boot up function will fail.

Security Function

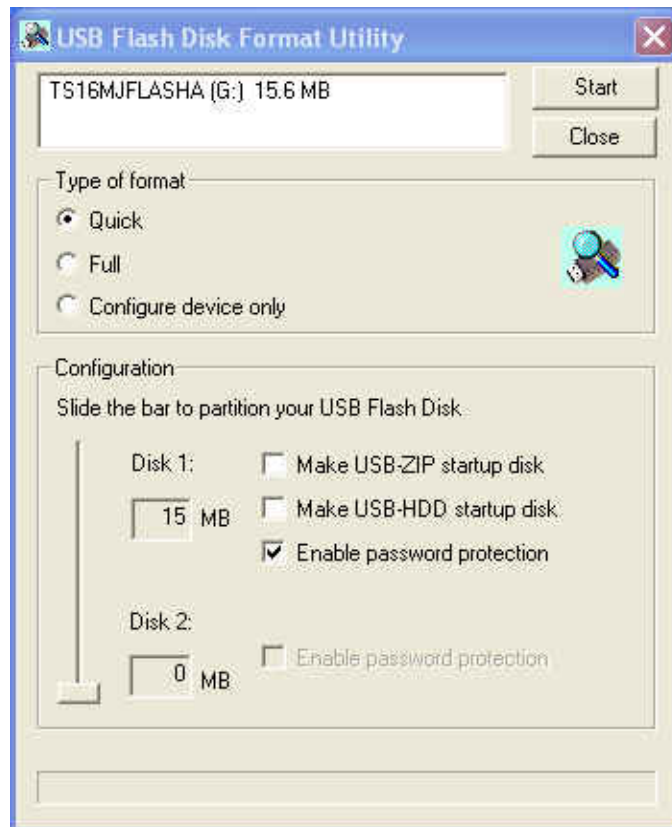
- ❖ **Security Function is not supported by Mac or Linux Operating Systems**

Security Function for Windows 98/98SE, Me, 2000, & XP

1. You must run the **mFormat** program on the Driver CD to enable this feature. This procedure will reformat the **JetFlash** and erase any data saved to the **JetFlash** memory. To avoid loss of data, please backup the files before proceeding. Put the Driver CD into the CD-ROM (auto-run supported) and click **mFormat** button.



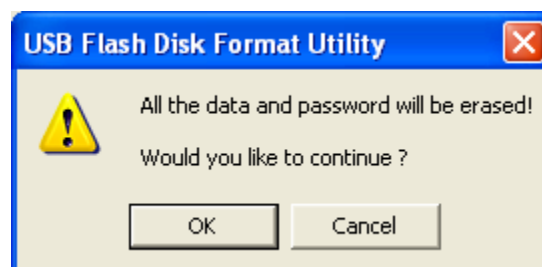
2. Select format type (Quick, Full or Configure device only) and **Enable password protection**.



3. **Set default password** window will appear and require you to enter the password. Enter the password you want to set and click **OK** to continue.



4. Make sure you have performed a backup of the files on your **JetFlash**. Click **OK** to continue, or **Cancel** to exit.



5. After clicking **OK**, the security function will be enabled.



Use of JetFlash with Security Function Enabled

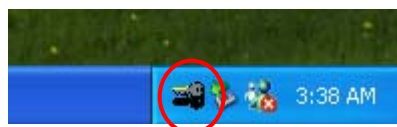
1. Plug in **JetFlash** and the **USB Flash Disk Password Utility** window will appear.



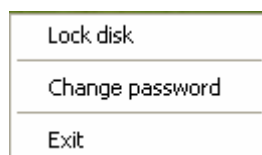
- ❖ If the **USB Flash Disk Password Utility** window doesn't appear, please put the Driver CD into the CD-ROM (auto-run supported) and click ***Passid*** button.



2. Enter correct password to access the data in secured disk.
- ❖ If two partitions are created, you can access Disk 1 (public disk) at any time, while need to enter the correct password to access Disk 2.
 - ❖ The password icon will appear on the system tray after you enter the correct password.



By double-clicking it, you can **Lock disk**, **Change password**, or **Exit**.



How to Change the Password

1. Plug in **JetFlash** and the **USB Flash Disk Password Utility** window will appear.



- ❖ If the **USB Flash Disk Password Utility** window doesn't appear, please put the Driver CD into the CD-ROM (auto-run supported) and click **Passid** button.



2. Enter current **Password** and click **Change password** to continue.
3. Key in **New password** and **Confirm new password**.



4. Click **Apply** to complete the change of password.

When You Forget the Password

When you forget your password, all you can do is running the **mFormat** program to reformat **JetFlash** and setup a new password.

❖ **All data on JetFlash will be deleted during execution of this procedure!**

Specifications

- Size: 88mm x 33mm x 15mm
75mm x 25mm x 11mm (Mini Size)
- Weight: 24 g
15 g (Mini Size)
- Data retention: up to 10 years
- Shock resistance: 1000 G (maximum)
- Erase cycles: 1,000,000 times
- Speed: Read 9.3M bit/sec, Write 6.8M bit/sec
- Certificates: CE, FCC, BSMI

Ordering Information

<u>Memory Size</u>	<u>Transcend P/N</u>
16MB	TS16MJFLASHA (Mini Size)
32MB	TS32MJFLASHA (Mini Size)
64MB	TS64MJFLASHA (Mini Size)
128MB	TS128MJFLASHA (Mini Size)
256MB	TS256MJFLASHA (Mini Size)
512MB	TS512MJFLASHA
1GB	TS1GJFLASHA
2GB	TS2GJFLASHA

JetFlash Limited Warranty

“Above and beyond” is the standard we set ourselves for customer service at Transcend. We consistently position ourselves to be significantly above the industry norm. It’s all part of our commitment to Customer Satisfaction.

All Transcend Information, Inc. (Transcend) products are warranted and tested to be free from defects in material and workmanship and to conform to the published specifications. Should your Transcend JetFlash malfunction during normal use in its recommended environment due to improper workmanship or materials within the warranty period, Transcend will repair or replace your product with a comparable product. This warranty is subject to the conditions and limitations set forth herein.

Duration of Warranty: Transcend JetFlash are covered by this warranty for a period of two (2) years from the date of purchase. Transcend will inspect the product and make the determination as to whether the product is eligible for repair or replacement. The decision by Transcend regarding eligibility of the product for repair or replacement will be final and binding. Transcend reserves the right to provide a functionally equivalent refurbished replacement product.

Limitations: This warranty does not apply to products that fail due to accident, abuse, mishandling, improper installation, alteration, acts of nature, improper usage, or problems with electrical power. Transcend JetFlash must be used with devices that conform to the recommended industry standards. Transcend will not be liable for damages resulting from a third party device that causes the Transcend product to fail. Transcend shall in no event be liable for any consequential, indirect, or incidental damages, lost profits, lost business investments, lost goodwill, or interference with business relationships as a result of lost data. Transcend is also not responsible for damage or failure of any third party equipment, even if Transcend has been advised of the possibility. This limitation does not apply to the extent that it is illegal or unenforceable under applicable law.

Disclaimer: The foregoing limited warranty is exclusive, with no other warranties, implied or statutory, including, but not limited to any implied warranty of merchantability or fitness for a particular purpose. This warranty is not affected in any part by Transcend providing technical support or advice.

Transcend

*Your Supplier, Your Partner,
Your Friend.*

Transcend Information, Inc.

www.transcendusa.com