

KANGURU MICRO DRIVE 2.0 USB2.0 Flash Drive

USER'S MANUAL



FCC COMPLIANCE STATEMENTS

This equipment has been tested and found to comply with the limits for a Class B digital device, pursuant to Part 15 of the FCC Rules. These limits are designed to provide reasonable protection against harmful interference in a residential installation. This equipment generates, uses and can radiate radio frequency energy and, if not installed and used in accordance with the instructions, there is no guarantee that interference will not occur in a particular installation. If this equipment does cause harmful interference to equipment off and on, the user is encouraged to try to correct the interference by one or more of the following measures:

Reorient or relocate the receiving antenna.

Increase the Distance between the equipment and receiver.

Connect the equipment into an outlet on a circuit different from that to which the receiver is connected.

Consult the dealer or an experienced radio/TV technician for help.

TRADEMARKS

MS-DOS, Windows, Windows 98/2000/ME/XP are trademarks of Microsoft Corporation.

Macintosh and Mac are trademarks of Apple Computer

*All of the third-party brands and names are the property of their respective owners.

Table of Contents:

Introduction	1
Features & Specifications	2
Installation Procedure	3

1.) Introduction:

Thank you for purchasing the KanguruMicro Drive2.0 from Kanguru Solutions!

The KanguruMicro Drive2.0 is a high speed USB2.0 Flash Drive. Its ultra compact size fits in the palm of your hand, yet can store up to 1GB of data! These Mini USB2.0 Flash Drives work with virtually any operating system, most without any device drivers! Just plug the KanguruMicro Drive2.0 into an available USB or USB2.0 port and begin using it! Store and transport your work files, MP3's, pictures, e-mail, etc

NOTE: In order to reach the full USB2.0 transfer speeds your computer must have USB2.0 ports. Otherwise, you will only reach USB1.1 transfer speeds for this device.

2.) Features & Specifications:

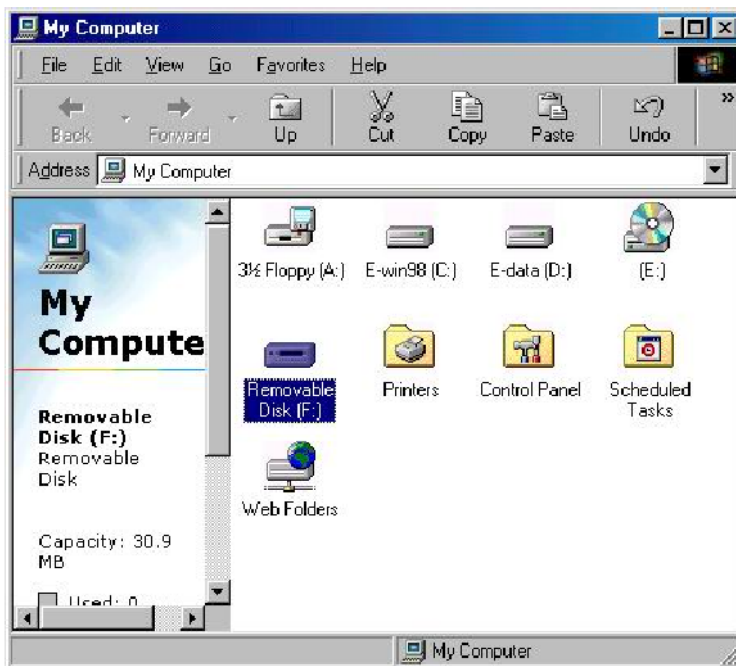
- Compatible with USB 2.0 specifications
- Backwards compatible with USB1.1
- Supports Toshiba & Samsung NAND flash memory
- Read Speed: 7 MB/s
- Write Speed 2.5 MB/s
- Supports power saving mode to reduce power consumption
- Supported by Windows 98/98SE with a device driver
- Supported by Win 2000/ME/XP without a device driver
- Supported by Linux Kernel version 2.4.10 and above without device driver
- LED indicator when KanguruMicro Drive2.0 is in use
- Write protection switch
- Plug & Play compatible
- No external power is required DC 4.5V~5.5V from USB port
- Shock resistance: 1000G (maximum)
- Power consumption < 14mA when in use
- Altitude: 80, 000 ft (relative to sea level)
- Acoustic noise: 0 dB (at one meter)
- Weight: 21g
- Operating Temperature: -15°C to 75°C
- Vibration: 15 G peak to peak max

3.) Installation Procedure:

Windows 98 & 98 SE

1.) You must install the drivers before inserting your KanguruMicro Drive2.0 into your USB port. To install the drivers, simply run the **Setup.exe** file located in the KanguruMicro Drive USB2.0 drivers folder.

After the installation has completed, you can find a “Removable Disk” drive icon in “My Computer”.



Windows ME / 2000 / XP

The KanguruMicro Drive2.0 is driverless for these operating systems. These operating systems already have a built-in driver, which can support KanguruMicro Drive2.0. Simply plug in the KanguruMicro Drive2.0 into the USB 2.0 port and Windows will automatically detect the new hardware and install the appropriate driver. When the installation has completed successfully, you will find a “Removable Disk” drive icon showing in “My Computer”.

Macintosh 8.6 and above

Macs also have the built-in driver to support KanguruMicro Drive2.0. Simply plug in the KanguruMicro Drive2.0 into the USB port, and your Mac OS will automatically install the driver and an icon will show up on your desktop.

Note: KanguruMicro Drive2.0 will only work with Mac OS 8.6 (latest version) or later.

Linux Kernel 2.4.10 or later

Linux users will need to mount the device first, before using KanguruMicro Drive2.0.

(Need to become a super user first)

```
! # mount -o uid = <user ID>, gid = <group ID> /dev/sda /<desired mount point>
```

After use, please un-mount the device.

```
! # eject /<desired mount point>
```

Warranty

This product carries a 1-year warranty from the date of purchase. Any claims for loss or damage must be made to carrier directly. Claims for shipping errors should be reported to Kanguru Solutions within three (3) working days of receipt of merchandise.

Tech Support

If you experience any problems installing your KanguruMicro Drive2.0 or have any technical questions regarding any of our products, please call our tech support department. Our tech support is free and available Monday thru Friday, 9am to 5pm EST.

Call 1-508-376-4245 or

Visit our website at <http://www.kangurusolutions.com/>