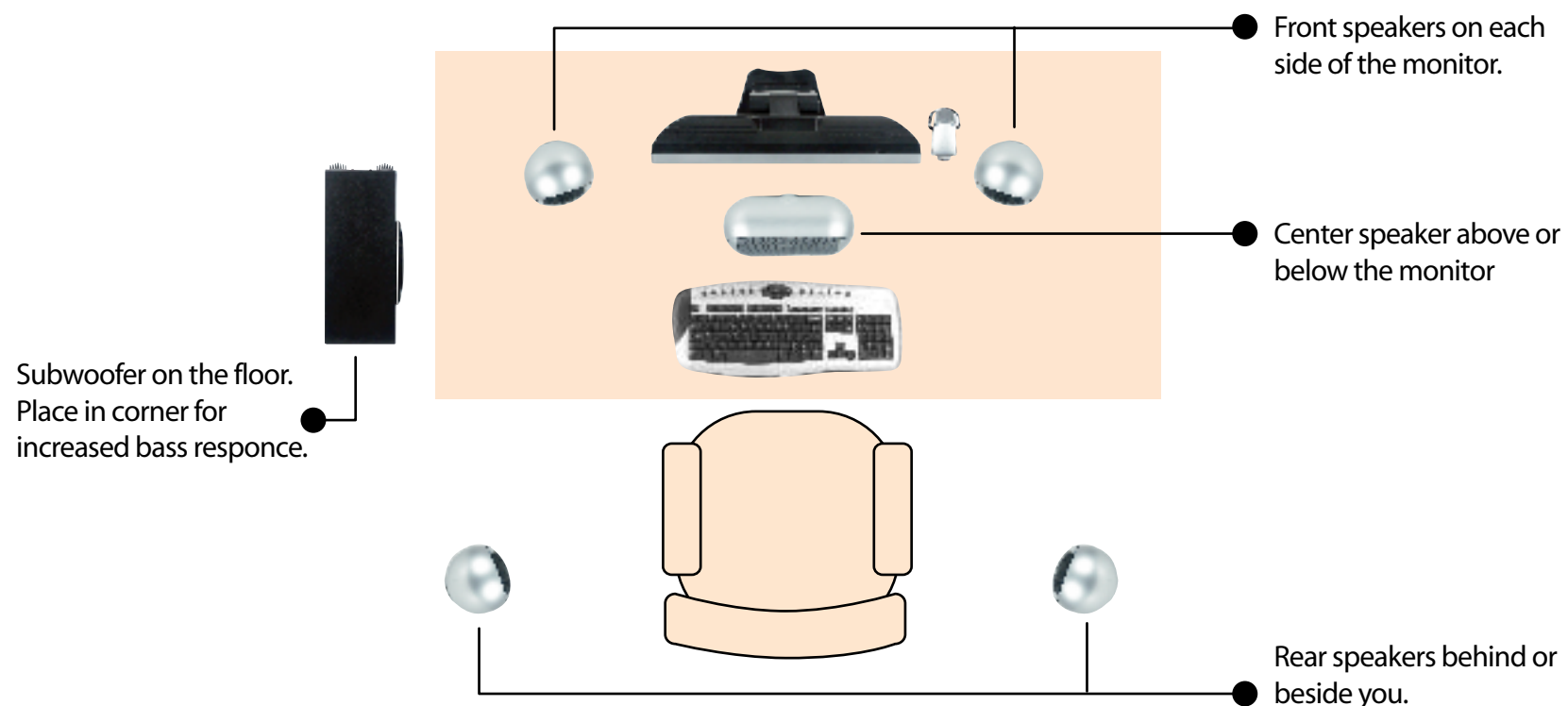


Setting up your Gateway GMAX 5100 5.1 Speaker System

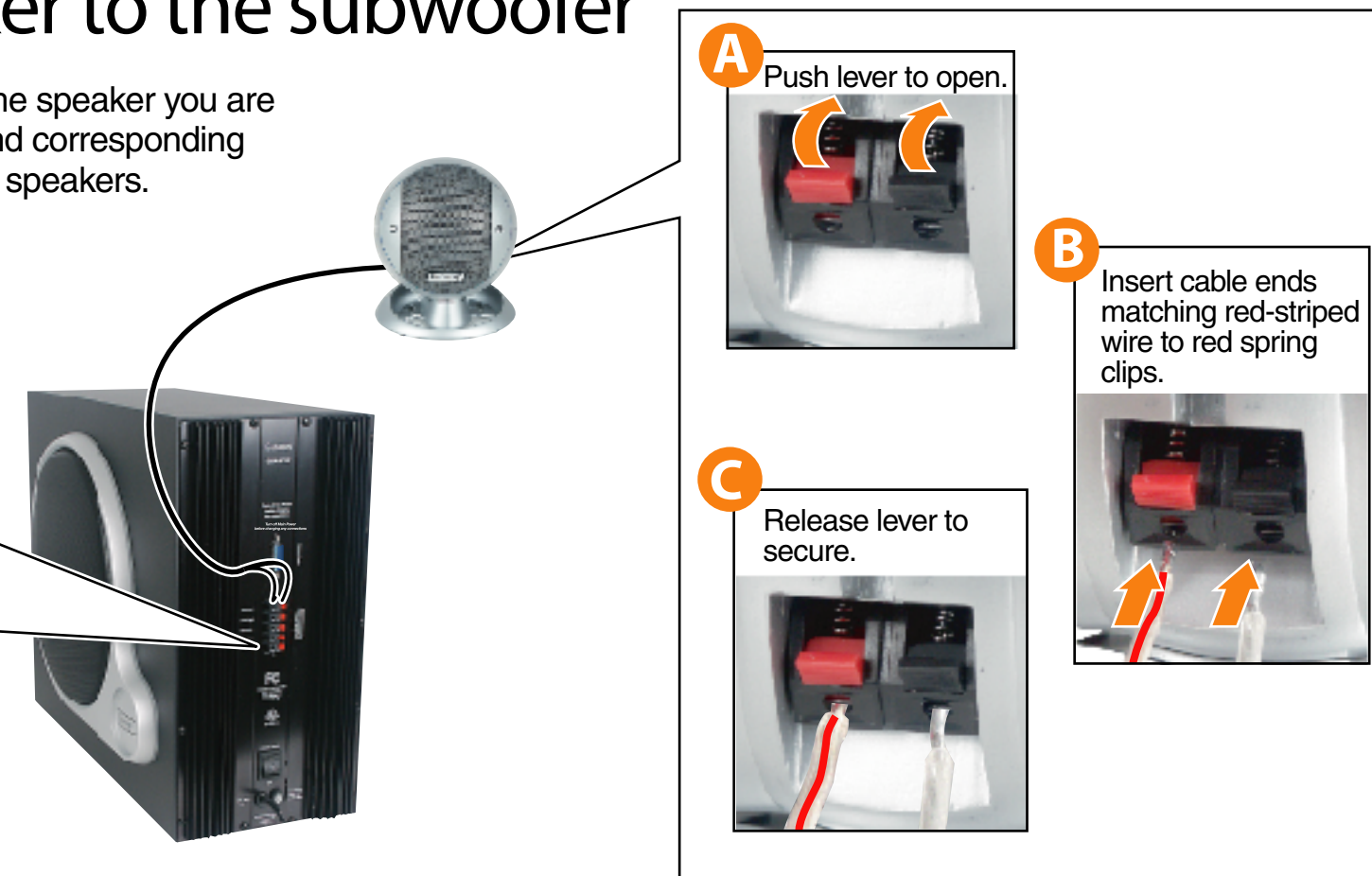
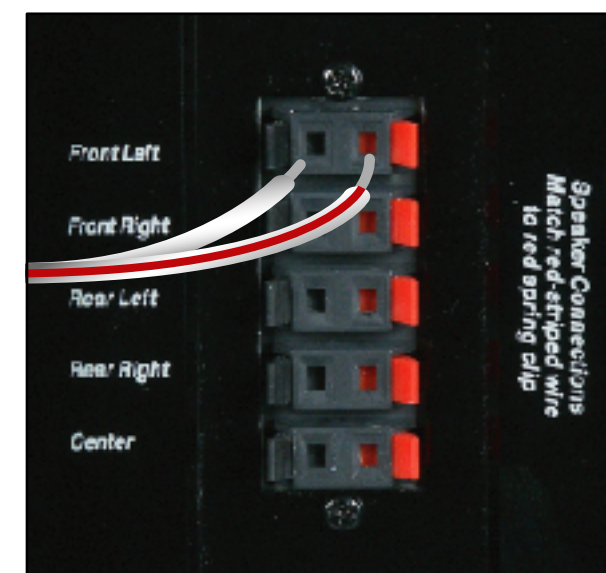
Gateway

1 Place speakers around the room

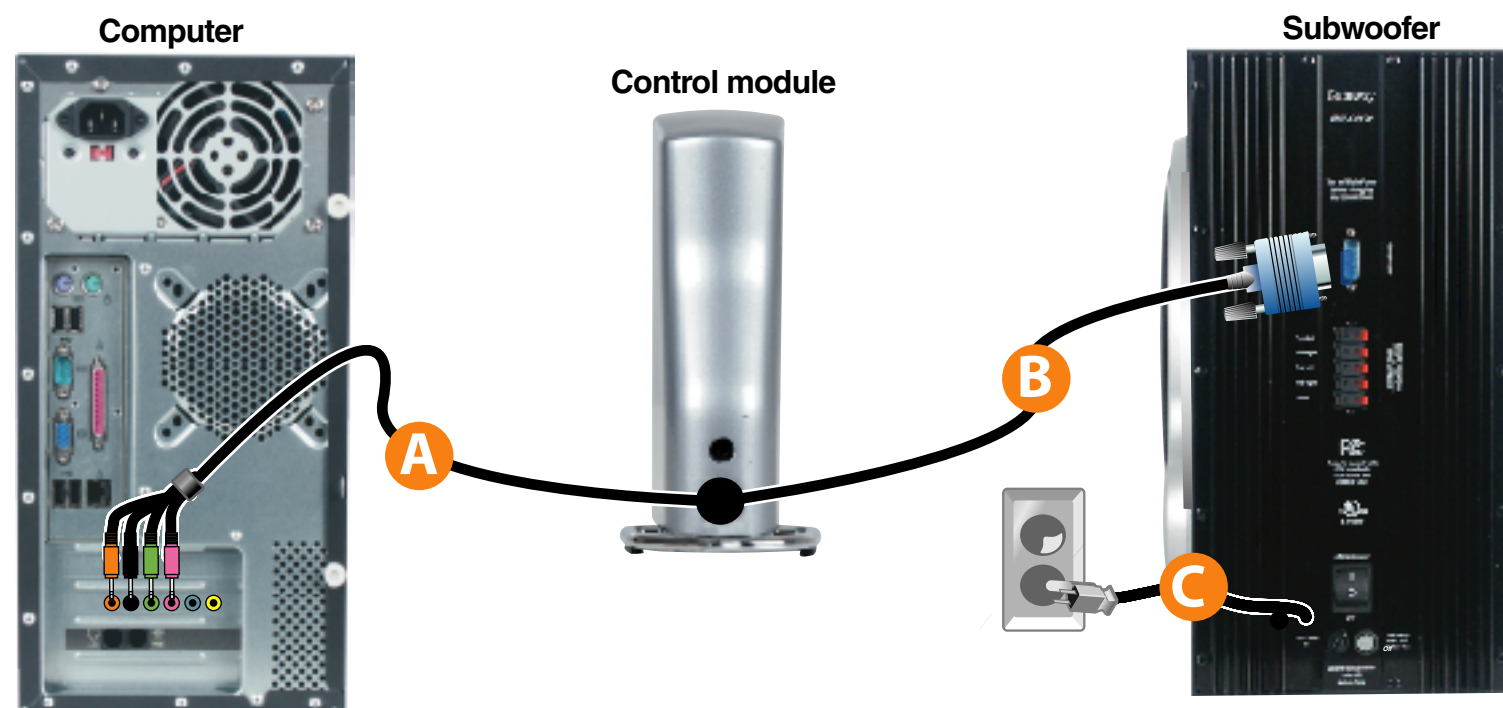


2 Connect each speaker to the subwoofer

Find the cable with the label that matches the speaker you are connecting and connect it to the speaker and corresponding connection on the subwoofer. Repeat for all speakers.



3 Connect the Control Module



4 Turn on the subwoofer



5 Turn on the control module

