 solution series

SLK 1650-QE

User's Manual

At Antec, we continually refine and improve our products to ensure the highest quality. So it's possible that your new case may differ slightly from the descriptions in this manual. This isn't a problem; it's simply an improvement. As of the date of publication, all features, descriptions, and illustrations in this manual are correct.

Disclaimer

This manual is intended only as a guide for Antec's Computer Enclosures. For more comprehensive instructions on installing your motherboard and peripherals, please refer to the user's manuals which come with your components and drives.

SLK1650-QE – Mini Tower Case

Your new case features a whisper-quiet 350 Watt SmartPower power supply, with a main power switch. Make sure you turn the switch to the ON (I) position before you boot up your computer for the first time. Normally, you won't need to switch to the OFF (O) position, since the power supply includes a soft on/off feature. This lets you turn your computer on and off by using the soft switch on your computer case. If your computer crashes and you can't shut it down using the soft switch, you can switch the main power to the OFF (O) position.

Applies only to models designed for sale in the European Union:

Solution Series Power Supply models designed for the EU include Power Factor Correction (PFC) circuitry in accord with European standard regulation code EN61000-3-2. By altering the input current wave shape, PFC improves the power factor of the power supply. This results in increased energy efficiency, reduced heat loss, prolonged life for power distribution and consumption equipment, and improved output voltage stability.

Setting Up

1. Place the case upright on a flat, stable surface. The power supply fan (at the back) should be facing you.
Note (not applicable to models designed for the European Union): Before installation, check the red voltage switch setting on the power supply. It should match your local voltage (115V for North America, Japan, etc. and 230V for Europe and many other countries). If it doesn't match, please change the setting. If you don't, you could damage your equipment and void your warranty.
2. Remove the two thumbscrews which fasten the top cover. These are the only screws you need to remove to open the case. Set these screws aside and keep them separate from the other screws.
3. Slide the top panel toward the rear of the case and lift it up to remove.
4. At the top of the each side panel, in front of the power supply, there is a 4" wide tab. Lift this tab and pull the side panel out to remove.
5. Inside the case you should see the power supply, some wiring (LED's, etc.), an installed I/O panel, a power cord and a plastic bag containing more hardware (screws, brass standoff, plastic stands, etc.).

Installing the Motherboard

This manual is not designed to cover CPU, RAM, or expansion card installation.

Please consult your motherboard manual for specific mounting instructions and troubleshooting.

1. Lay the case down, with the open side facing up. The drive cages and power supply should be visible.
2. Make sure you have the correct I/O panel for your motherboard. If the panel provided with the case isn't suitable, please contact your motherboard manufacturer for the correct I/O panel.
3. Line up your motherboard with the standoff holes, and remember which holes are lined up. Not all motherboards will match with all of the provided holes; this is normal, and won't affect functionality. (In other words, there will likely be extra holes.)
4. Remove your motherboard by lifting it up.
5. Screw the brass standoffs into the threaded holes that line up with your motherboard. Do not overtighten the standoffs. Some standoffs may be pre-installed for your convenience.
6. Place your motherboard on the brass standoffs.
7. Screw in your motherboard to the standoffs with the provided Phillips-head screws. Your motherboard is now installed.

Connecting the Power and LED

The Antec SmartPower power supply is an ATX12V form factor power supply with a single 20-pin Main Power Connector, a 6-pin AUX Power Connector, and a 4-pin +12V Power Connector for the motherboard. It also includes 2 SATA connectors, five to seven 4-pin Peripheral Power Connectors and one to two 4-pin Floppy Drive Power Connectors for your drives. It is backwards compatible to previous ATX form factor power supplies. If your motherboard does not support the AUX Power Connector or the +12V Power Connector, you can still use this power supply.

The power supply is also equipped with a 3-pin fan signal connector. Connect it to one of the fan connectors on your motherboard. You may monitor the speed of the rear power supply fan through your motherboard BIOS or through the monitoring software that's supplied with your motherboard. **Note:** At low temperatures, the fan may run as slow as 1200 RPM. At these speeds, some motherboards may not properly detect the fan speed and may generate false warnings of fan failure. To ensure proper monitoring of the fan, please check your motherboard manual.

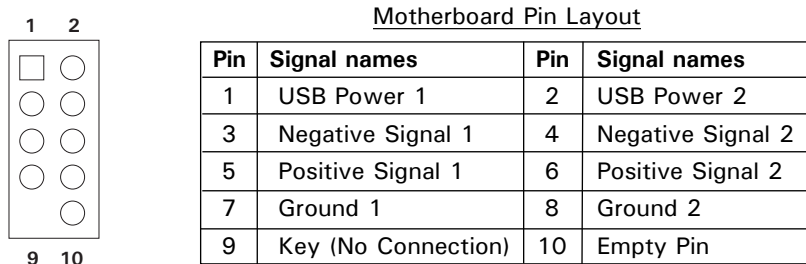
1. Connect the 20-pin ATX power connector (and AUX or +12V connectors if appropriate) to your motherboard.
2. Connect the Reset switch (labeled RESET SW) to your motherboard at the RST connector. Make sure the label always faces the front of the case.
3. Connect the Power Switch (labeled POWER SW) to the PWR connector on your motherboard.
4. You'll find the Speaker connector (labeled SPEAKER) behind the PWR connector.
5. The Power LED, Hard Drive LED, LED I & LED II connectors all share a single ribbon cable. Attach the Power LED (labeled POWER) and HDD LED connectors to the appropriate headers on your motherboard. You can use the LED I and LED II connectors as you see fit: as SCSI LED, Message LED,

etc. or any other function supported by your motherboard, expansion cards, and peripherals.

Connecting the USB ports

You'll find two 5-pin internal USB connectors (on separate cable sets) attached to the front USB connectors. Here's how to connect the internal USB connector to your motherboard headers:

1. Check the USB pin layout in your motherboard user manual and make sure it follows this standard pin out:
 Pin 1: USB Power - may also be labeled +5V
 Pin 2: Negative Signal - may also be labeled P-, D-, USB0-, etc.
 Pin 3: Positive Signal - may also be labeled P+, D+, USB0+, etc.
 Pin 4: Ground
 Pin 5: Ground (sometimes this pin is missing)
Note: Your motherboard's USB pin layout may differ from this common standard. If you're unsure of your motherboard's layout, please contact technical support at your motherboard's manufacturer.
2. Connect the 5-pin USB connector so that the red wire is on Pin 1 (Power, or +5V). The second header may be reversed (Power pin at the opposite end of the row) so be careful when you plug in both connectors.



Installing 3.5" Devices

There is one 3.5" drive cage inside the case. The upper portion can hold 2 external 3.5" drives, and the lower portion can hold 3 internal 3.5" drives.

1. Mount your external 3.5" drives into the top two drive bays. Load the drives from the back, lining them up to the front of the drive cage.
2. Use one hand to support the drive, and fasten the drive to the cage with the screws provided.
3. Mount your hard drive or other internal 3.5" device into the drive cage by threading the special screws through the rubber grommets. Don't over-tighten the screws, since that could decrease the grommets' ability to reduce vibration and noise.
6. Find a small 4-pin connector on the power supply and connect it to the male 4-pin connector on the floppy drive.
7. Connect a 4-pin large connector from the power supply to the male 4-pin connector on each of the other devices.

Installing 5.25" Devices

1. If you look at the 5.25" drive bays from the rear of the case, you'll see some metal grilles covering those bays. Carefully push a screwdriver through the metal grille, and gently remove the plastic drive bay cover by pushing outwards.
2. Use your hands to twist the metal plate back and forth until it breaks off.
Note: Don't break off the metal grilles covering the drive bays that you don't intend to use now. Be careful of the newly exposed metal where the grille was attached, as these areas are likely to be sharp.
3. Using the screws provided, fasten your 5.25" device into the drive bay.
4. Repeat the same procedure for other devices.
5. Connect a 4-pin large connector from the power supply to the male 4-pin connector on each of the devices.

Connecting the Data Cables

After you've connected the devices to the power supply, you need to connect data cables between the devices and the motherboard. To achieve the best data-transfer and cooling performance, we recommend using premium rounded cables such as Antec Cobra Cables.

The cables that are included with your drives should have a red strip on one side indicating pin number 1. If you use these cables, make sure that the red strip is on pin 1, usually toward the power connector.

Installing the Fan

We've included one low-speed 120mm exhaust fan with this case. This (rear) fan is mounted with a vibration-absorbing NoiseKiller™ kit, which will allow your computer to run extremely quietly. In the front of the case, you'll also find a mount for an optional 80mm intake fan.

The rear fan is installed so that the air blows out of the case. Find a large 4-pin peripheral connector on the power supply and connect it to the male 4-pin connector on the fan.

The front fan (optional) should be installed so that the air is blowing into the case from the front. To install it:

1. Release the fan cage by squeezing the tabs.
2. Put the fan in the cage and push it into place until it snaps tight.
3. Snap the fan cage back into place.
4. Connect a large 4-pin peripheral connector from the power supply to the male 4-pin connector on the front fan.

Chassis Air Guide

Your new case includes a chassis air guide, which provides cooling air directly to the CPU. The air guide consists of three parts: an upper duct, flange, and lower duct. If you prefer, you can adjust the distance between the lower duct and your CPU, for maximum cooling efficiency.

You could also install an 80mm intake fan between the air guide and the case's side panel. This will further improve your system's cooling airflow.

To mount the optional fan between the chassis air guide and the side panel:

1. Remove the chassis air guide from the side panel.
2. Attach the fan to the side panel (see Figure 1).
3. Using the fan screws, lock the flange of the air guide to the fan (see Figure 2).
4. Connect a large 4-pin peripheral connector from the power supply to the male 4-pin connector on the fan.



Figure 1



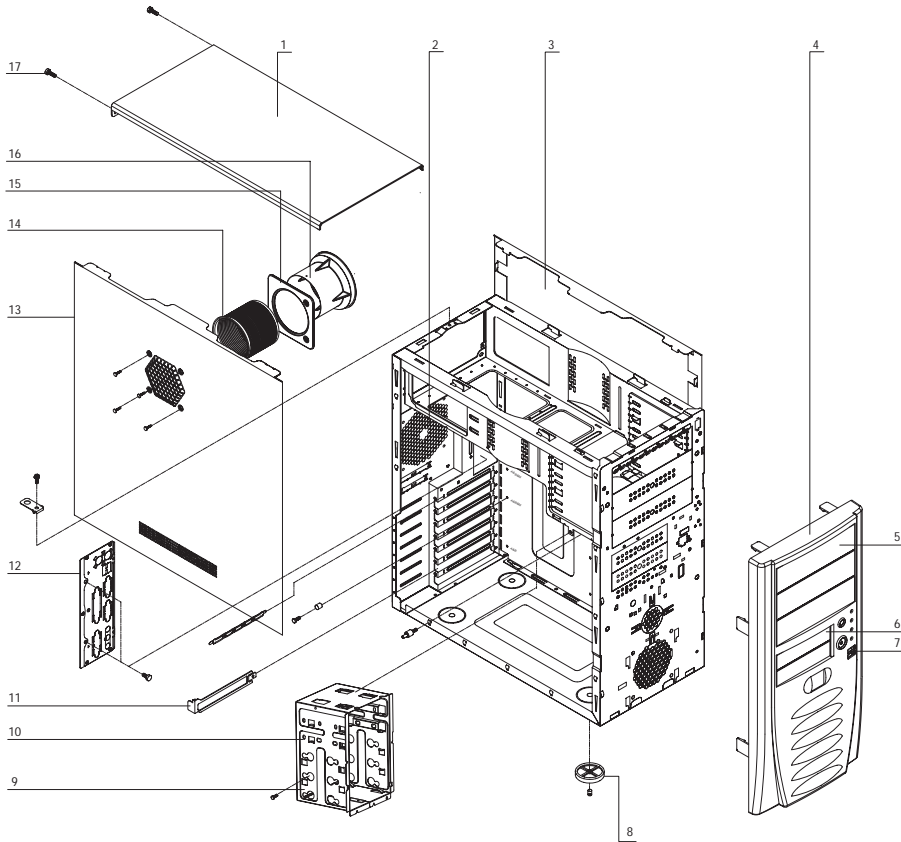
Figure 2



Antec Quality 3-Year parts and labor warranty (AQ3)
See details at: <http://www.antec-inc.com/warranty.html>

SLK1650-QE

Quiet Black Mid Tower Case



Drawing Number	Description
1	Top Panel
2	Rear 120mm Fan blowhole
3	Left Side Panel
4	Front Bezel
5	5.25" Drive Bay Cover
6	3.5" Drive Bay Cover
7	Front USB Ports
8	Plastic Feet
9	Lower 3.5" Drive Cage
10	Upper 3.5" Drive Cage
11	Expansion Slot Cover
12	Universal I/O Panel
13	Right Side Panel
14	Upper Duct
15	Flange
16	Lower duct
17	Thumbscrew

NoiseKillers



Reduce vibration and noise from case fans, power supplies, and disk drives by up to 80%.

SONATA

The world's quietest PC case

- Ultra quiet 380 Watt TruePower power supply
- Elegant piano black finish
- Nine drive bays
- Low-speed 120mm fan
- Rubber grommets for HDD bays



MINUET-Slimline PC Case



- Whisper-quiet 220 Watt SmartPower power supply
- Low profile, small form factor
- Place it vertically or horizontally

SmartCool Fans



- Variable speed, with advanced temperature-response system for quieter operation
- Available in 80mm, 92mm, 120mm sizes

illuminate



Internal and external LED light tubes and mini-tubes. Available in blue, red, green, UV, or multicolor.

TruePower Series

Wattage	Model	Net Weight
330W	True330	5.00 lbs.
380W	True380	5.00 lbs.
430W	True430	5.10 lbs.
480W	True480	5.35 lbs.
550W	True550	5.35 lbs.
480W	TrueBlue480	5.35 lbs.
550W	TrueControl 550	6 lbs.
550W	True550EPS12V	5.35 lbs.



- Winner of over 45 international awards
- Low noise and high performance
- Voltage feedback circuitry
- Dedicated voltage outputs
- Up to 550 Watts

UV Cobra Cables



- Your system will run faster and cooler
- UV activated
- ATA 133 and floppy
- Also available in non-UV style

Antec, Inc.

47900 Fremont Blvd.
Fremont, CA 94538
tel: 510-770-1200
fax: 510-770-1288

Antec Europe B.V.

Sydneystraat 33
3047 BP Rotterdam
The Netherlands
tel: +31 (10) 462-2060
fax: +31 (10) 437-1752

Technical Support:

US & Canada
1-800-22ANTEC
techsupport@antec-inc.com

Europe

+31 (10) 462-2060
europe.techsupport@antec-inc.com

www.antec-inc.com