



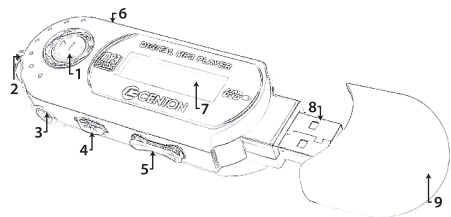
MP3 Manual Revision: 1.2

Centon Electronics, Inc. Copyright © 2006. All rights reserved. All trademarks and registered trademarks are the property of their respective owners. 15 Argonaut, Aliso Viejo, CA 92656. TEL: 800-836-1986 FAX: 949-855-6553



MP3 Player Manual

1. Power/Play/Pause/Stop
2. Keychain/Lanyard Loop
3. Earbud Socket
4. Hold Button
5. Volume +/-
6. Mode(press-in)/Prev/Next
7. LCD Display
8. USB Connector
9. Cap



## Table of Contents

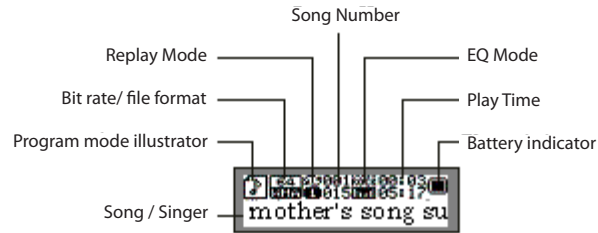
|  |    |   |    |
|--|----|---|----|
| • Summary of Functions .....               | 2  | • System Set .....                        | 13 |
| • Battery .....                            | 3  | • USB Mass Storage Disk .....             | 16 |
| • Basic Functions .....                    | 4  | • Firmware Upgrade .....                  | 17 |
| • Play Music .....                         | 6  | • Other Settings .....                    | 20 |
| • Sound Effects .....                      | 7  | • Partition and Encryption Function ..... | 23 |
| • Voice Recording .....                    | 8  | • Troubleshooting .....                   | 28 |
| • Change ACT Recorded Files into WAV ..... | 10 | • Technical Specifications .....          | 29 |
| • FM Radio (Select Models) .....           | 11 |   |    |

## Summary of Functions

- Supported file formats  
MP1, MP2, MP3, WMA, WMV, ASF, WAV  
DRM copy-protected files not supported\*
- FM radio (Select models have this function)  
Provides auto and fine tuning, plus manual preset to save 40 different local stations (20 each band). Preset mode allows quick and easy access to your favorite stations.
- Driverless\* USB disk  
Manipulate (save, move, copy, delete, etc.) files on the portable disk via your operating system's built-in file management utilities (i.e. 'My Computer' in Windows or 'Finder' in Mac systems). No need to install driver in Windows Me, 2000 or XP, or Mac OS 10.3 or above, or Linux 2.4.2 or above. \*Driver required for Windows 98 – driver available from [www.centon.com](http://www.centon.com).
- "Partition and encryption" function  
Divide the player into two disks with MP3 Player Utilities (download available from [www.centon.com](http://www.centon.com)).  
Encrypt (password protect) one of the drives (partitions) to hide it, thereby protecting the content so that it cannot be seen by others. (Windows only)
- Record/Replay  
Record your voice with the built-in microphone and save as WAV or ACT file format (fine or long record). You can then choose to replay those recordings. VOR (Voice Operated Recording) recording is also supported.
- Seven preset EQ  
Natural, rock, pop, classical, soft, jazz, DBB.
- Various playback modes  
Normal, repeat one, folder, repeat folder, repeat all, random, intro.

(\*see "Troubleshooting" section)

- Power off  
Sleep time or off can be set for user's convenience.
- Graphic menu  
Vivid animation menu with corresponding characters allow easier operation.
- LCD window



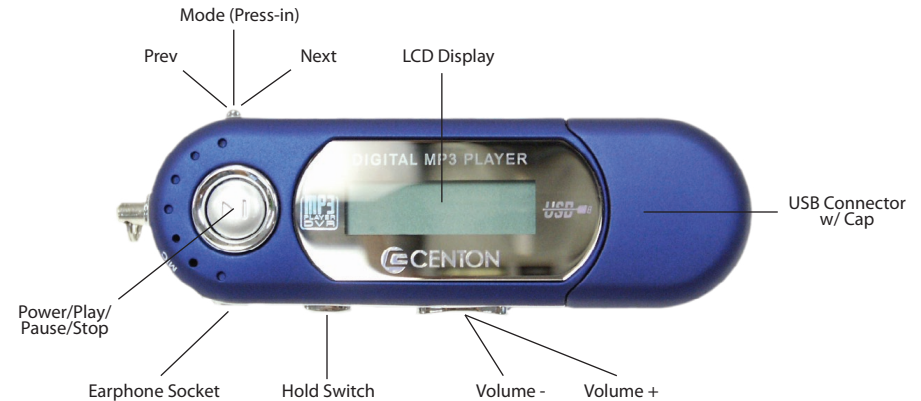
## Battery

The player has 9\_level battery monitoring system. The Power level indicator shows as full when battery is 1.5v, and decreases over time with use. When power is used up, the indicator will become blank (indicating the need to replace with new battery).

### 1. Supports one AAA battery (Alkaline recommended)

1.1 Alkaline batteries are the recommended battery type. Alkaline batteries are formulated to give peak performance in electronic devices like MP3 Players. Other 1.5 volt AAA battery types (Heavy Duty, Rechargeable, etc.) may also be used.

1.2. Playtime: Up to 10 hours (depending on battery type and usage)



## Basic Functions

### • Start up/shutdown

To start up (power on) or shutdown (power off) the player, press and hold the "PLAY" button for two seconds.

### • Entering the menus

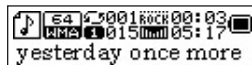
Enter different menus by pressing "MODE". The "MODE" button functions via two different selection methods – 'Short Press' and 'Long Press'. Menu includes Main Menu (long press "MODE" to enter during music playback), submenu when playing (short press to enter) and submenu when stopped (short press to enter).

- Enter different functions in main menu

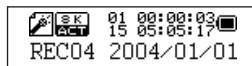
Main menu (long press "MODE" to enter)



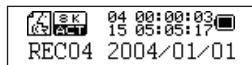
Music mode:



Record mode:



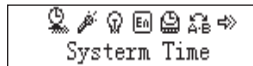
Voice mode:



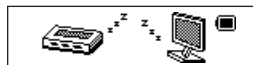
FM radio (Select Models):



System set:



Enter USB by connecting to PC:



Enter USB and it will display below after holding:



- The Hold switch also has a "write-protect function" for the USB disk. When the Hold switch is closed, you cannot write information to or format the device. When the Hold switch is open, you can write information to the drive as normal.
- Record/Pause (short press), stop recording (long press)

## Play Music

- Simple operation
  1. Select (short press) the 'Music' menu from the Main Menu. (If in a different menu, long press "MODE" to enter "Main Menu".) Once in the Music menu, press "play" to play music.



2. To select music: use the "PREV"/"NEXT" toggle to choose which music track to play.
3. Volume control: VOL+: increase volume, VOL-: decrease volume

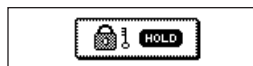
Note:

When Hold is ON, all keys are locked and non-functional. To resume normal operation, move Hold to OFF.

Except during playback or recording, the player will power off automatically at a fixed time as per the "system set /power off /save battery" setting.

- Hold

Press any key, system display is as follows after it is locked



## Sound Effects

1. When music is playing
2. Short press "MODE" to enter play submenu
3. Click "NEXT" to choose "Equalizer" mode
4. Short press "MODE" to enter "Equalizer" mode
5. Click "NEXT" to choose, short press "MODE" to confirm

Different kinds of EQ:

|                |              |            |                   |
|----------------|--------------|------------|-------------------|
| NOR<br>Natural | ROCK<br>Rock | POP<br>Pop | CLAS<br>Classical |
| SOFT<br>Soft   | JAZZ<br>Jazz | DBB<br>DBB |                   |

### • Lyric synchronization

The player supports "\*.LRC" files. Songs will play with lyrics.

How to use lyric files:

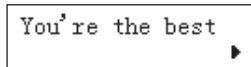
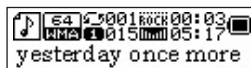
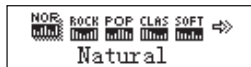
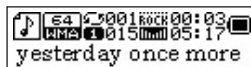
Lyric filename matches the songs filename:

For example:           the name of the song: *yesterday once more.mp3*  
                               the name of the lyric file: *yesterday once more.lrc*

How to know if the lyric file is there and working:

If there is lyric matching the song, the "🎵" will change to "🎵📄" at the left top corner.

1. Find the lyric file that matches the song
2. Long press "MODE" to enter "lyric interface"
3. Lyric display
4. Short press "MODE" to return to "song mode"
5. Lyrics can be changed by hand  
 Short press "VOL+." button can see forward or backward lyric



## Voice Recording

Make sure there is enough power in battery.

The player supports up to 99 saved recorded files.

- Record time - depends on record type (WAV or ACT)
- Press "REC", begin to record when stop is on.
- Record in "record mode"

1. Main menu:



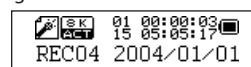
2. Click "NEXT" to choose "record mode"



3. Short press "MODE" to enter "record mode"



4. Short press "play" to begin recording



- ⚠ Recorded sound is saved in current list in record stop submenu/main disk list.
- ⚠ Space is full on LCD window indicating there is no space for new; please delete other files to free up space.

- ↓ List is full on LCD window indicating there are 99 record files in this list, please change another.
- ↓ "PLAY" and "REC/A-B" keys can be used when recording.

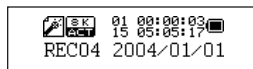
• Choose Record Type

1. In record stop interface
2. Short press "MODE" to enter "record submenu"
3. Click "NEXT" to choose an option of record types
4. Short press "MODE" to enter selection interface of the record types

5. Click "NEXT" to choose to the type you want
6. Short press "MODE" to confirm the type you want



7. Press play to begin recording



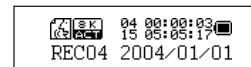
• Record Types

- 32K/WAV: high-quality, WAV format
  - 8K/ACT: long recordings ACT format
  - 32K/VOR: high-quality, sound control, WAV
  - 8K/VOR: long records, sound control, ACT
- VOR (Voice Operated Recording) conserves file space; records only when audible signal is present.

• Play Recorded Files

1. Enter main menu

2. Click "NEXT" to choose "voice mode"
3. Short press "MODE" to enter "voice mode" interface
4. Presses "play" again and start playing



5. Record control

5.1 Select the recorded file

PREV: choose last recorded file    NEXT: choose next recorded file

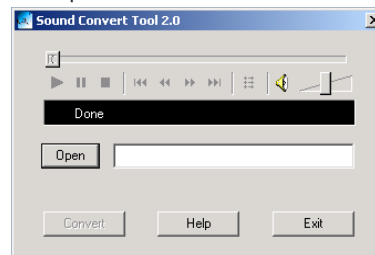
5.2 Volume control

VOL+: increase volume    VOL-: decrease volume

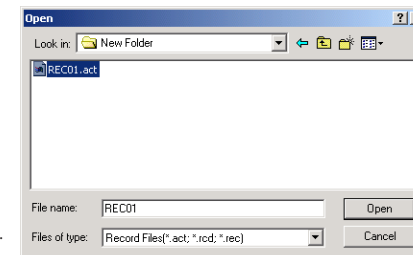
### Change ACT Recorded Files into WAV

ACT files can be converted to WAV format with the Sound Convert Tools included with the MP3 Player Utilities.

1. Run "Sound Convert Tool" program from the 'Start' menu.
2. Click 'Open' and choose the ACT file to be converted. Click 'OK'.

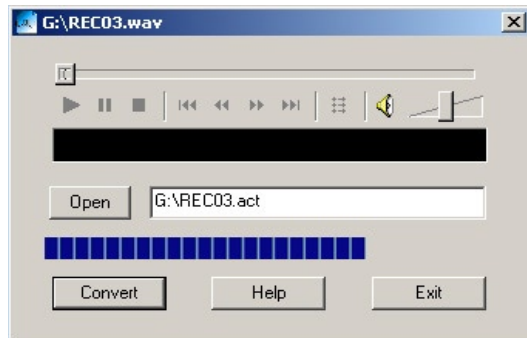


1.



2.

3. Click convert button, begin to convert WAV file



Besides converting ACT files, WAV, WMA and MP3 files can be played with these tools.

### FM Radio (Select Models)

1. Enter main menu, click "NEXT" to choose "FM mode"
2. Short press "MODE" to enter "FM mode"
3. Search automatically  
Push "PREV/NEXT" for 2 seconds, the player can scan forward or backward per 100 kHz.
4. Fine turning  
Click PREV: it will scan backward 100 kHz; Click "NEXT": it will scan forward 100 kHz.



5. Save searched frequency

Short press "MODE" to enter FM submenu



Short press "MODE" again to save this station

6. Short press "play" to switch between preset (saved) stations

7. Volume control

VOL + : increase volume VOL - : decrease volume

Note:

- ⚠ Normal band and Japanese band can be chosen for different areas (short press "MODE" to enter "FM submenu", click "NEXT" to choose right band)
- ⚠ Over 20 stations can be saved separately in normal band and Japanese band

## System Set

### • How to Enter

System parameters can be set here.

(Options may vary depending on firmware revision. The parameters outlined below may or may not be available on your player depending on its firmware revision.)

1. Enter main menu

2. Click "NEXT" to choose "System", and short press "MODE" to enter the "System" settings.



### • Parameters introduction

|                    |   |
|--------------------|---|
| Record Time        | Set the time and date when recorded files are saved   |
| Backlight          | How long backlight stay on without any operation  |
| Back Color         | Set different back colors (select models)   |
| Language Selection | Set different languages   |
| Power Off          | Set a fixed time, when it's time to reach it, the player will power off automatically                       |
| Repeat             | Set working status on replay mode   |
| Contrast           | Set contrast level of LCD window  |
| Online Mode        | An option specially designed for Windows 2000 pre-SP4 users who use the "partition and encryption" function |
| Memory Info.       | See memory capacity and percentage of used capacity   |
| Firmware Version   | Firmware version of the player is displayed   |
| Firmware Upgrade   | Special for firmware upgrading  |
| Exit               | Exit from current interface   |

### • Record time

1. System set interface

2. Short press "MODE" to enter "record time interface"



3. Short press "VOL +" or "VOL -" to toggle between YEAR - MONTH - DATE - HOUR - MINUTES - SECONDS.



4. Click "NEXT" increase to the desired value, or click "PREV" to decrease to the desired value

5. Click "MODE" to exit after operation

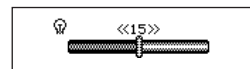
### • Backlight - sets timeout for backlight

1. System set interface

2. Click "NEXT" to choose "backlight"



3. Short press "MODE" to enter "backlight" interface, adjust time by clicking PREV/NEXT



4. Click "MODE" to exit after operating



- Language - Selects the displayed language for the menus.
- Power off
  - Defines the amount of time before the player automatically powers off according to a preset period of inactivity during playback.
  - This setting allows you to set the period of time in minutes before the player powers down during inactive playback. When no keys are pressed during playback for the "Sleep time" indicate: you may set a fixed time (unit: minute) for the player to turn off automatically whenever is operated. This function is specially designed for listening to music before falling asleep.
  - Note: sleep mode is valid only once, and set time will be cleared after powering off. The time needs to be set again next time.
- Replay mode - Sets "Replay mode" to Manual or Automatic
  - "Manual mode" indicates that at A-B replay, the player will stop manually.
  - "Auto mode" indicates that at A-B replay, the player will stop automatically (The main intent of this feature is for language learning).
- Contrast adjust
  - You can adjust contrast of LCD in this menu by NEXT & PREV key from 1 (Lightest) to 16 (Darkest). Click MODE key to exit to upper menu.
- Online mode
  - Sets the drive mode when connected to the PC via your USB port. The "Online Mode" choices are Multi Drive ~ Normal Only ~ Encrypted Only.
  - Operating systems before Window 2000 SP4 cannot support more than one partition on a USB mass storage device (i.e. with two drive letters). If the drive has been partitioned and encrypted (password protected), the "Online Mode" function allows you to choose if the drive should be recognized as a "single normal disk", "single encrypted disk" or as "Multi Drive".

- Memory info
  - Displays the total memory capacity and percentage refers to the used capacity
- Firmware version
  - Displays the firmware version and date code
- Firmware upgrade
  - Interface for upgrading the firmware. Enter this interface first before beginning the upgrade.

⚠ Advanced Tip: Short press "MODE" to set option, then short press "PLAY" to exit from the menu quickly. This "exit" function is valid for every menu.

## USB Mass Storage disk

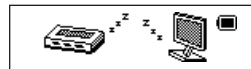
The player is a normal USB mass storage device, and is supported under Windows98 (separate driver required), Windows Me/2000/XP (no driver needed), Mac OS 10.3 or above, and Linux 2.4.2 or above.

The player can operate off of the power from the USB port, and does not require the battery when connected to the USB port (computer must be powered on).

In "wait mode", short press MODE to exit to main menu, then choose work mode to enter.

After connecting to PC, three displays can be shown:

1. Wait



2. Download



3. Upload

## Firmware Upgrade

The player's firmware can be upgraded in the PC or Mac.

Important suggestions before upgrade:

1. Backup all files in your MP3 player before proceeding – the firmware upgrade will erase all information stored in it
2. Loss of power during upgrade will cause malfunction
3. Make certain you have the correct firmware version before proceeding with the upgrade; an incorrect or incompatible firmware will cause device malfunction

• Upgrade procedure:

1. Enter the main menu



2. Short press "MODE" to enter "System set"; dial "NEXT" to choose "Firmware upgrade".

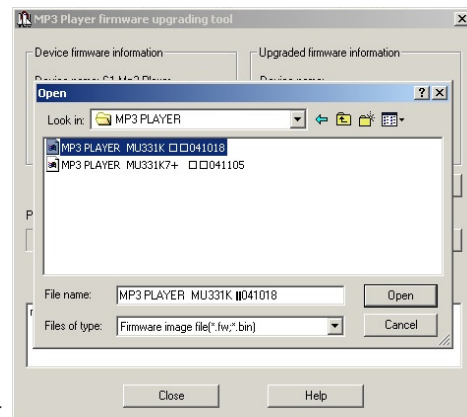


3. Connect the player to PC

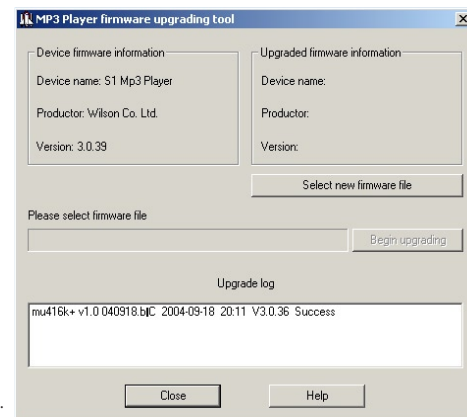


4. Run "MP3 player upgrade"; click "Select new firmware file"

5. Choose the new firmware program

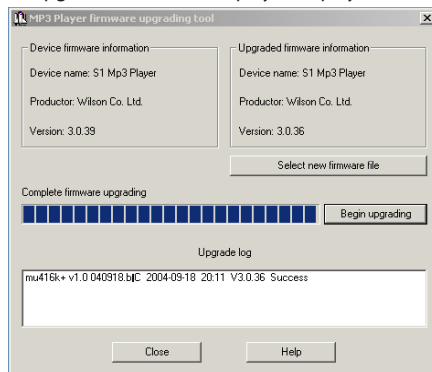


4.



5.

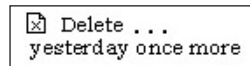
6. Click “Begin upgrading” and the operation begins to run  
When the upgrade succeeds, the player displays a notice as follows:



- ⚠ Firmware upgrade is used to improve and optimize the function of player. The player will run normally without firmware upgrade.
- ⚠ When upgrading, player malfunction may result if upgrade procedure is not followed properly. Please read the instruction carefully before proceeding with upgrade.
- ⚠ Firmware upgrade software must match with the corresponding model. Make sure the software matches the model when upgrading. Mismatched software will not work, and may render the player unusable.
- ⚠ Upgrade software available through manufacturer or related website.

## Other Settings

- Choose different folders  
Users can put files into different folders separately in order to play and manage all kinds of files. (The folder must be created in the computer.) The player will recognize first-level folders. The player will not recognize subfolders of these first-level folders.
- Delete file (stop submenu) - Delete corresponding files and save files in Music mode, Voice mode or FM mode.
  1. In stop interface (FM without stop interface)
  2. Short press “MODE” to enter stop submenu
  3. Click “NEXT” or “PREV” to choose “single” or “all” files
  4. Short press “MODE” to enter the Delete interface
  5. Click “NEXT” to change “no” into “yes”
  6. Short press MODE to confirm the delete prompt



“Delete all” will delete all related files stored in the selected folder. For example, if in music mode “Delete all” will delete all the music files, while other recorded files (e.g. voice recordings or FM recordings) will not be deleted.

Likewise, if “Delete all” is used when in the “Replay” menu, this will delete all recorded files but leave music files intact.






FM is much simpler – “Delete” or “Delete all” will delete the station(s) saved before.

- ⚠ **IMPORTANT!** When using as a removable disk on the computer, ALWAYS be sure to safely remove the hardware before unplugging it from the USB port. In Windows, use the “Safely Remove Hardware” option (the green arrow icon) in the system tray. In Mac, trash the drive icon. In Linux, unmount the device. Failure to do this can cause deleted files to appear as though they were not deleted. Failure to safely remove the device can also cause file corruption, and can damage the device.

- Play mode (play submenu)

When playing music and record files, different play modes can be chosen (such as repeat single. repeat all)  
Play mode is NO.1; the player can play in enacted rules after choosing confirmation.


1. Repeat

- |   |               |   |
|---|---------------|---|
|  | Normal        | Last song is played, continue to play the next until play all the songs |
|  | Repeat One    | Play single song again and again  |
|  | Folder        | Play all the songs in the folder  |
|  | Repeat Folder | Play all the songs in the file again and again                          |
|  | Repeat All    | Play all the songs again and again                                      |

2. Shuffle

- |   |        |                                |
|---|--------|--------------------------------|
|  | Random | Play the present song randomly |
|---|--------|--------------------------------|

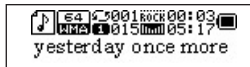
3. Intro

- |   |       |   |
|---|-------|---|
|  | Intro | Play all the songs for the first 10 seconds in proper order |
|---|-------|---|

- Play tempo (play submenu)

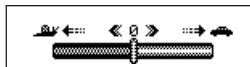
When playing music (MP3 format only), different play tempos can be chosen (change fast or slow), but the file will not be altered.

1. Short press "MODE" to enter "playback submenu"



2. Click "NEXT" to choose "Tempo rate"

3. Short press "MODE" to enter "Tempo rate" menu



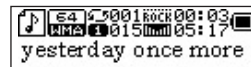
4. Click "NEXT" to make tempo fast, or click "PREV" to make the tempo slow

Note: Setting tempo affects every song played until the next setting change.

- Replay mode (play submenu)

- Press "REC/A-B" to enter directly
- Enter "A-B repeat" by playing submenu
- A-B repeat – allows user to select a specified section of a file to be repeated over and over a predetermined number of times. Example: set the player to repeat the file being played from 0:03 seconds to 0:58 seconds, and replay that selection 5 times.

1. Function available in Music or Voice play




2. Short press "MODE" to enter "Play sub-menu"


3. Click "NEXT" to choose replay

4. Press "MODE" to enter replay

5. 'A' in the repeat icon  is flashing to wait to set 'A'

6. Click "NEXT" to set 'A'; now 'B' is flashing in  to wait to set 'B'

7. Click "NEXT" to set 'B'.

The repeat icon  is fixed. The player will start to play from 'A' to 'B' again and again until the set number of repeat times is met. Short press "PREV" to reset 'A'. (The number of A-B replay times is set by the setting in the "repeat times" menu.)



⚡ In repeat mode, press "VOL+" or "VOL-" to set "Play tempo" directly.

- Follow function – allows a follow and read practice

1. Repeat from 'A' to 'B' is on



2. Short press "NEXT" to enter "follow mode"

3. When repeat icon  changes into follow icon , sound can start to be recorded; at this time, length is from 'A' to 'B'.



4. When reaching the time, original sound will be played, press "NEXT" to enter comparison function at this time.

⚠ In this situation, press "PREV" button to return to "A-B" repeat.

- Comparison function – allows comparison of "A-B" repeat vs. follow recording
  1. After entering comparison, repeat icon display , original sound is played at this time.
  2. Original sound is finished, icon changes to , the sound of user is played.
  3. The sound of user is finished, original sound will play again, never stop (repeat times don't limit it), unless press "MODE" to exit.

⚠ Click "PREV" to return to "follow function" in this situation.

⚠ Short press "MODE" to exit "Repeat mode" for the above three situations.

- Replay times (play submenu)  
"Replay times" determines the number of "A-B" repeat times.
- Replay gap (play submenu)  
"Replay gap" determines the play delay from last play to next play. (Unit: second)

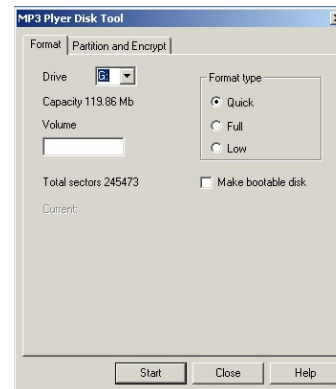
### Partition and Encryption Function (Windows Only)

The partition and encryption (password protect) function is for users concerned that their sensitive information may be compromised or seen by others. For users who would not like their information to be seen by others, the "partition and encryption" function allows them to solve the problem completely.

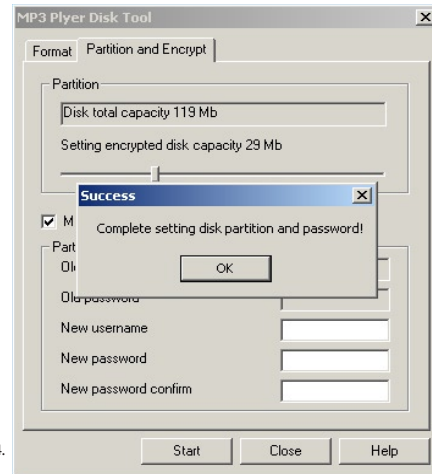
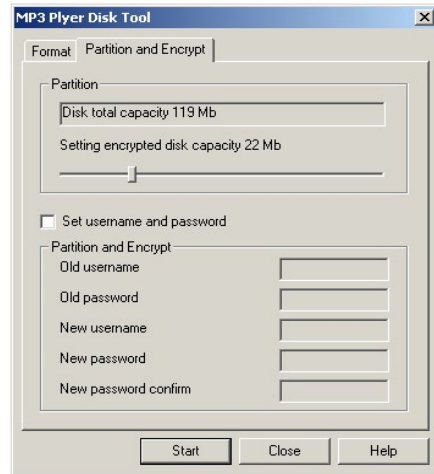
The USB disk can be partitioned into two logical disks with the "MP3 Player Disk Tools" utility (available for

download from [www.centon.com](http://www.centon.com)). (Windows 2000 SP4 or newer operating system is required to see multiple logical unit numbers – or LUNs; i.e. more than one drive or partition for a single USB Flash disk.) The "Online Mode" function helps users who have partitioned and encrypted the device into more than one drive, and have Windows 2000 pre-SP4 or older operating system. With the "Online Mode" function, you can choose single normal disk or single encrypted disk in the "System" settings "Online Mode". When encrypted, the data on the encrypted partition cannot be seen without entering the correct username and password.

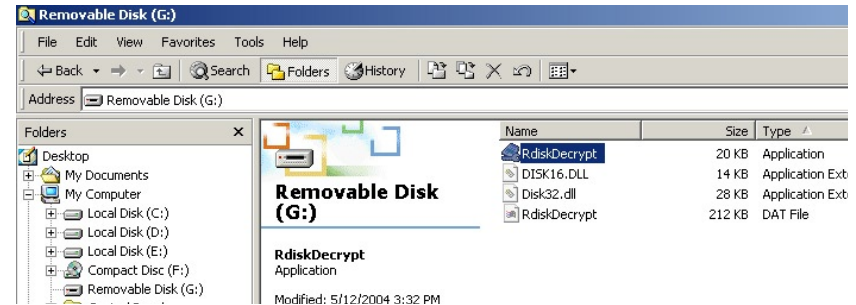
- Partition and Encrypt Procedure:
  1. Connect the player to the PC.
  2. Run MP3 Player Disk Tool.



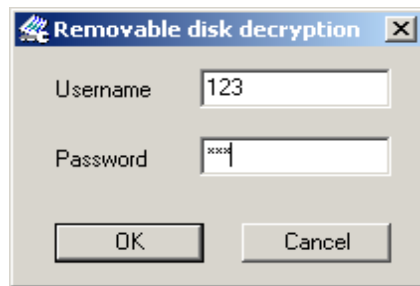
3. Select the "Partition and Encrypt" tab. Then choose appropriate capacity for encryption disk, then check the "Input username and password". Input username in "new username". Input password in "new password", and then input the same password in "new password" confirmation. Click start to partition.
4. Partition is complete. The notice is as follow.



5. Windows will prompt to restart the computer. Click "Yes" to restart computer.
6. After Windows restarts, two disks can be seen (pre-Windows 2000 SP4 – only one can be seen). Double-click the encrypted disk (2nd of 2 removable disks). There are three files, two of which are hidden files, one of which is executable file, and disk space is 300K.



7. Run the executable file "RdiskDecrypt.exe", input user name and password in dialogue box. If correct, you can unlock the disk and copy files.



8. Username and password must be input to unlock the drive. The disk will appear as encrypted each time you connect to a PC.

- ⚠ Notice: Please make sure to back up any data on the drive before performing the partition and encrypt function; all data will be deleted once the disk is partitioned into two disks; the same happens when two disks are united to one disk.
- ⚠ Warning: Please remember the username and password; the encrypted disk cannot be used without the username and password; the only way to cancel an encrypted disk is by uniting the disks; uniting the disks will cause any files stored on the encrypted disk to be lost.

### Troubleshooting:

- No power
  - Check whether the battery has been inserted properly
  - Check whether the player has turned on
  - Check if the USB connection is solid
- No sound is heard from earphone
  - Volume is not set "0", check connection of earphone to keep the earphone clean
  - Damaged MP3 can make different noise and even can't play music, keep files complete
- Words in LCD are not normal
- FM reception is not good
  - Make sure you chose the correct language
  - Adjust the position between earphone and the player
  - Turn off any nearby electric devices
  - Earphone can be used as antenna
- Download of music is not normal
  - Check if USB cable is damaged or connected correctly
  - Check whether drive is installed correctly
  - Check whether the player's memory is full or not
- Cannot play a selected music file
  - Check the digital format. This player does not support DRM protected files.

Note: "DRM" Stands for "Digital Rights Management". DRM refers to a collection of systems used to protect the copyrights of electronic media. These include digital music and movies, as well as other data that is stored and transferred digitally. For example, the Apple iTunes Music Store uses a DRM system to limit the number of computers that songs can be played on. Each audio file downloaded from the iTunes music store includes information about the owner of the file and how many times the file has been transferred. These protected files will not play on computers that have not been authorized to play the music.

