



color laser printer

# The designer's choice



# Phaser<sup>®</sup> 7760

## Tabloid Color Laser Printer

**High-quality, consistent color** is crucial when you rely on stunning visuals to convey your ideas and concepts. That's why the Xerox Phaser 7760 color printer is the designer's choice. It offers brilliant color, blazing speeds and easy-to-use features that make the most of everything you print.



*Built in color calibration tools give you the final output you want.*

### Quality color you can count on

**The color you want is the color you get. This printer features technologies and software that allow you to specify and control the output color, so the results match your expectations. You get consistent color accuracy, sharp images, and crisp text, from the first page to the last.**

- Up to 1200 x 1200 dpi resolution for fine line detail and crisp text.
- 600 x 600 x 4 dpi Photo Mode for smooth color transitions, especially flesh tones.
- Glossy, vivid colors and rich, deep blacks.
- Black Trapping ensures that black text on colored backgrounds and colored text on black backgrounds prints sharp and clear.
- TekColor correction helps you simulate output colors of your computer screen, printing press or other device. Color can be managed automatically as well as manually for office graphics, press separations, monochrome graphics and spot colors via an industry-leading driver interface.
- PhaserMatch<sup>®</sup> 4.0 color management and calibration software adds another level of color control and helps maintain color accuracy.
- Incredibly consistent output through-out the length of the print run.

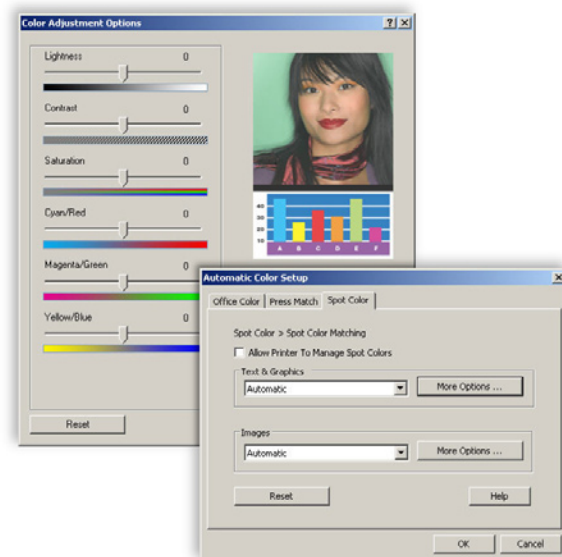


Phaser 7760DN

### Unbeatable performance

**When it comes to printing important projects on time, you need both quality and speed. The Phaser 7760 printer is designed for high volume printing and offers impressive print speeds, efficient processing and other time saving features. You get the consistent quality you need, when you need it.**

- Printing speeds up to 35 ppm color and 45 ppm black-and-white.
- 800 MHz Power PC processor handles complex, graphic-intensive layout files with ease.
- First-page-out time as fast as 9 seconds for color.
- Up to 1 GB of memory minimizes print queues and keeps production moving.
- Supports custom page sizes, booklet and banner printing, and reliably prints on a wide range of media types and heavy paper weights for maximum project flexibility.



*Advanced Color tools allow you to fine-tune output to your specifications.*



Large, six-line control panel gives quick access to all print functions and provides help solutions if needed.

## Set up, manage and print with ease

Your busy office or graphics department needs a reliable printer that's easy to operate, requires minimal maintenance and won't slow you down. Simple setup and easy-to-use features of the Phaser 7760 save valuable time and free you up to focus on your work, not your printer.

- Simple automated print driver installation gets you printing in minutes.
- It fits easily into your office, either as a desktop unit or a hard-working floor model with plenty of paper capacity. Both require only front and side access.
- PrintingScout® alerts and media size sensors offer built-in help to ensure your job is printed right.
- PhaserSMART® remote diagnostic tool offers solutions and trouble-shooting help if needed, saving you time.
- CentreWare® Internet Services embedded web server allows you to manage, configure and troubleshoot your printer from any location on the network using a web browser.
- Smart Tray feature provides real-time paper tray status at your desktop – showing available media types and sizes – and automatically selects the correct tray.
- Smart two-sided printing feature automatically detects single-page print jobs and bypasses the duplex unit.



Phaser 7760GX with Professional Finisher

### Advanced finishing and paper handling

- Optional finishers eliminate the effort and expense of collating, folding and stapling by doing it for you.

#### Finishing Options



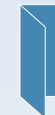
**Sort (Job Offset) and Collate**  
Save valuable time



**Staple**  
Multiple position and placement to enhance usability



**Hole punch**  
Options meet worldwide conventions



**Fold**  
V-fold brochures are folded and ready for distribution



**Booklet**  
Saddle-stitch booklets in-house to reduce costs and eliminate delays

- If you are printing a lot, why keep reloading paper or switching media in the trays? Add a 1,500-sheet or a 2,500-sheet high-capacity feeder.

Call today. For more information, call 1-877-362-6567 or visit us at [www.xerox.com/office](http://www.xerox.com/office)



	7760DN	7760GX	7760DX
<b>Speed</b>	Up to 35 ppm color / 45 ppm black-and-white		
<b>Duty Cycle</b>	Up to 150,000 pages / month		
<b>Paper Handling</b>	Tray 1: up to 150 sheets Tray 2: up to 500 sheets Total 650 sheets		
Paper Input	Tray 1: up to 150 sheets Tray 2: up to 500 sheets Total 650 sheets	Tray 1: up to 150 sheets Tray 2: up to 500 sheets 1,500-sheet High-Capacity Feeder Total 2,150 sheets	Tray 1: up to 150 sheets Tray 2: up to 500 sheets 2,500-sheet High-Capacity Feeder Total 3,150 sheets
Finishing Options*	<b>Advanced Finisher:</b> 50-sheet multi-position stapling, 3-hole punch, up to 3,500 sheets <b>Professional Finisher:</b> 50-sheet multi-position stapling, 3-hole punch, saddle-stitch booklet making, v-folding, up to 2,000 sheets		
Automatic 2-sided Printing	Standard		
<b>Print</b>			
First Page Out Time	As fast as 9 seconds color, 6 seconds black-and-white		
Maximum Resolution	up to 1200 x 1200 dpi		
Processor	800 MHz		
Language Support	Adobe® PostScript® 3™, PCL® 5c emulation, Adobe PDF-Direct		
Connectivity	Ethernet 10/100/1000 Base-TX, USB 2.0		
Memory (Std / Max)	512 MB / 1 GB		
Hard Drive	Standard 40 GB (minimum)		
Print Features	Custom Size Pages, Booklet Printing, Banner-size Printing, Smart Trays, Proof, Secure, Saved and Personal Print, Personal Saved, Print With, PDF Direct, Extended Font Storage, Job Collation, PrintingScout®, PhaserSMART®, Intelligent Ready PhaserCal® Color Calibration      PhaserCal® plus PhaserMatch® 4.0 Color Management		
<b>Accounting</b>	Job Accounting, Usage Analysis Tool		
<b>Warranty</b>	One-year On-site Warranty, Xerox Total Satisfaction Guarantee		

\*7760DN configuration requires 1500-sheet or 2500-sheet High-Capacity Feeder for finishing options

## Features

**Font capabilities** 137 Resident PS fonts and 81 PCL Printer drivers Windows 2000/XP 32 and 64 bit OS, MacOS 9.x/X, version 10.2 or higher, Novell NetWare 5.x/6.x, UNIX (Linux 5.2+, Sun OS 4.x, Sun Solaris 2.4+, DEC, HP/UX 11.x, IBM AIX 4.2+, SGI, SCO), Xerox Walk-up printing drivers with Windows 2000 or higher

**Languages** True Adobe® PostScript® 3™, PCL5c emulation with automatic sensing and switching.

## Special Features

**PrintingScout** Instantly displays pop-up Help if attention is needed during print jobs.

**PhaserSMART** provides automated internet-based support.

**Auto Install** automatically gets you printing over the network in seconds.

**Productivity tools for the user:** Secure Print, Proof Print, Saved Print, Personal Print, Print With, Booklet printing, Scaling, Watermarks, Collation, Separation pages, N-up, Run Black, Smart Duplexing, Intelligent Ready, Remote printing, Configurable Tray 1 Behavior, Job Pipelining, Extended Font Storage.

**Productivity tools for the IT manager:** CentreWare IS Embedded Web Server, Mail/InX Email Alerts, Printer Neighborhood, CentreWare Printer Management Software, Job Accounting, Usage Analysis.

## Paper Handling

**Tray 1:** standard: 150 sheet capacity. 20 lb. bond to 90 lb. cover (75–255 gsm), custom sizes ranging from width of 3.95–12.6" in. (100–320 mm) and length of 5.5–47.25 in. (140–1200 mm) Envelopes: #10, Monarch, A7, DL, C6, C5, C4, B5.

\*Width of 12.6 is limited in length, performance of banner-size printing is affected by media length and media weight

**Tray 2:** standard: 500 sheet capacity. 20 lb. bond to 80 lb. cover (75–220 gsm), custom sizes from 5.5 x 7.15 in. (140 x 182 mm) to 11.7 x 17 in. (297 x 432 mm)

**Tray 3:** standard on GX and DX: 500 sheet capacity. 20 lb. bond to 80 lb. cover (75–220 gsm), selectable standard sizes up to tabloid/11 x 17 in. (A3/297 x 420 mm)

**Trays 4, 5:** standard on GX: 1,000 sheet capacity. 20 lb. bond to 80 lb. cover (75–220 gsm), selectable standard sizes up to tabloid/11 x 17 in. (A3/297 x 420 mm)

**Trays 4, 5:** standard on DX: 2,000 sheet capacity. 20 lb. bond to 80 lb. cover (75–220 gsm), letter/8.5 x 11 in. (A4/210 x 297 mm and B5/182 x 257 mm)

All tray capacities based on Xerox 20 lb Bond

**Automatic 2-sided printing:** 20–40 lb. bond (75–169 gsm), sizes up to tabloid/11 x 17 in. (A3/297 x 420 mm)

**Finishing:** Staples on media up to 32 lb. Bond (80 gsm), Folds and Staples up to 10 booklets of 10 sheets

## Color Controls

**Color standards** PANTONE®-approved solid-color simulations, Adobe PostScript device-independent color, CIE International color standards, and support for ICC, ICM and Apple ColorSync color management systems

**Color correction** TekColor Dynamic Correction Color Profiles selectable from the driver: Automatic, sRGB Display, sRGB Vivid, LCD Display, SWOP, Euroscale, Commercial, SNAP, Japan Color, ISO Coated, ISO Uncoated, Black and White, None, and custom color sliders. Plus up to 10 custom TekColor corrections based on device profiles (with PhaserMatch 4.0).

**PhaserMatch 4.0** color management for custom profiles Standard GX and DX, Optional DN.

## Operating

**Dimensions** (Width x Depth x Height)  
7760DN: 25.4 x 28.5 x 19.4 in. (644 x 724 x 493 mm), weight: 202 lb. (92 kg)

7760GX/7760DX: 25.4 x 28.5 x 33.7 in. (644 x 724 x 857 mm), weight: 7760GX: 268.1 lb. (122 kg), 7760DX: 290.2 lb. (132 kg)

**Finisher:** 25.4 x 35 x 39 in. (644 x 889 x 991 mm), weight: Advanced: 182.6 lb. (83 kg), Professional: 252.6 lb. (115 kg)  
**Cart:** 22.25 x 23.75 x 14.7 in. (572 x 602 x 373 mm) weight: 34.6 lb. (15.7 kg)

**Environment** Temperature: Storage: -20° to 48° C (-4° to 122° F); Operating: 10° to 32° C (50° to 90° F) Relative Humidity: Storage: 30% to 85%, Operating: 10% to 85%. Noise Level: 33dBA standby, 51 dBA running.

**Electrical** 110V, 50/60Hz model: Consumption: Printing: 616–684 Watts, Standby: 134 Watts, Power Saver: 13 Watts. 220V, 50/60Hz model: Consumption: Printing: 764 Watts, Standby: 135 Watts, Power Saver: 14 Watts, ENERGY STAR® qualified printer; Default time to Power Saver: 60 min.

**Regulatory** Listed to UL 60950-1/CSA 60950-1-03, 1st Edition, FDA/CDRH – Class 1 Laser Product, FCC Part 15, Class A, Canada ICES-003, Class A, CE marked, Low Voltage Directive 73/23/EEC, EN 60950-1, 1st Edition, EN 60825-1 – Class 1 Laser Product, EMC Directive 89/336/EEC, EN 55022, Class A, EN 55024, RoHS Directive 2002/95/EC, WEEE Directive 2002/96/EC

## Consumables

Toner Cartridges*	
Black (32,000 pages)	106R01163
Cyan (25,000 pages)	106R01160
Magenta (25,000 pages)	106R01161
Yellow (25,000 pages)	106R01162
Staple Pack	
Stacker Staples (15,000)	008R12941
Booklet Staples (20,000)	008R12925

\*Capacities are approximate, based on 5% coverage on an A-sized page.

## Routine Maintenance Items

Imaging Unit (Up to 35,000 pages)	108R00713
Fuser (110 V) (Up to 100,000 pages)	115R00049
Fuser (220 V) (Up to 100,000 pages)	115R00050
Waste Cartridge (Up to 27,000 pages)	108R00575
Transfer Roller (Up to 100,000 pages)	108R00579
Belt Cleaner Assembly	108R00580

## Options and Upgrades

512 MB Phaser Memory	097S03635
1,500-sheet High-Capacity Feeder (three 500-sheet Universal trays)	097S03628
2,500-sheet High-Capacity Feeder (one 500-sheet Universal tray, plus two 1,000-sheet A trays)	097S03629
Advanced Finisher* 3,500 sheets, stacker, stapler, 3-hole punch	097S03630
Professional Finisher* 2,000 sheets, stacker, stapler, 3-hole punch, booklet maker	097S03631
Printer Cart	097S03748
PhaserMatch 4.0	097S03634

\*Installation by Xerox recommended

## Total Satisfaction Services

One-year On-site Warranty, online web technical support and telephone support. Innovative service offerings include optional extended Service Agreements. The Phaser 7760 printer is backed by the Xerox Total Satisfaction Guarantee.

Consumables for the Phaser 7760 are part of the Xerox Green World Alliance Supplies Recycling Program. For more information, please visit the Green World Alliance website at [www.xerox.com/gwa](http://www.xerox.com/gwa)

## OUTSTANDING MEDIA CAPABILITY

Take full advantage of the new Phaser 7760 color printer with our comprehensive Xerox Paper and Specialty Media portfolio, which includes a selection of papers, labels and transparencies that come in a variety of weights and sizes. For a current listing of all recommended printing media visit [www.xerox.com/office/7760supplies](http://www.xerox.com/office/7760supplies)



Copyright © 2009 XEROX CORPORATION. All rights reserved. Contents of this publication may not be reproduced in any form without permission of XEROX CORPORATION. XEROX®, Phaser®, PhaserSmart®, PhaserCal®, PhaserMatch®, CentreWare®, TekColor™, PrintingScout™ and Walk-Up™ are trademarks of XEROX CORPORATION in the U.S. and/or other countries. Total Satisfaction Services is a service mark of XEROX CORPORATION. All other trademarks are the property of their respective manufacturers. PANTONE Colors generated may not match PANTONE-identified standards. Consult current PANTONE publications for accurate color. PANTONE, and other Pantone, Inc. trademarks are the property of Pantone, Inc. PCL® is a registered trademark of Hewlett-Packard. As an ENERGY STAR partner, XEROX CORPORATION has determined that this product meets the ENERGY STAR guidelines for energy efficiency. The ENERGY STAR name and logo are registered U.S. trademarks. The information in this brochure is subject to change without notice. 3/09 610P724930G 7760R-01UH