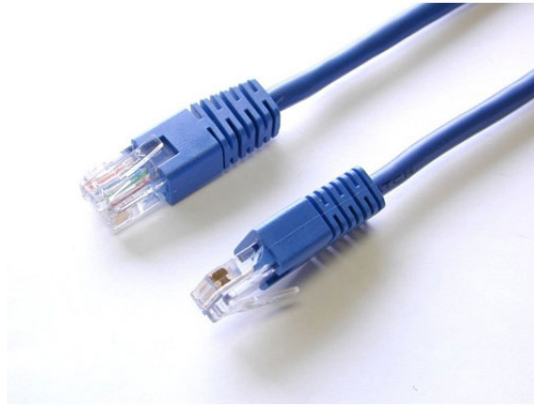


35ft Blue Molded Cat5e Crossover UTP Patch Cable

StarTech ID: M45CROSS35BL



StarTech.com's Cat5e UTP Crossover Patch Cables offer reliable Ethernet connections, with PVC molded strain relief that prevents the RJ45 connector termination point from bending at sharp angles - reducing the risk of cable damage, which could decrease network performance

This 35ft (blue) Cat 5e UTP Crossover Patch Cable is constructed of only top quality materials (100% copper conductors, 24 gauge wire, 50 micron gold connectors) to ensure optimum performance and is backed by StarTech.com's Lifetime Warranty.

Applications and Solutions

- Connects workstation to workstation
- Patches from hub to hub

Features

- Coloured Hoods for departmental colour coding
- StarTech Category 5e patch cables are carefully constructed and tested, to keep the Near End Crosstalk (NEXT) well within acceptable limits
- StarTech Category 5e Patch cables are constructed of top quality components
- The Strain relief prevents the cable from being bent at sharp angles at the connector to minimize the stress at the plug termination point

Technical Specifications

- Warranty: Lifetime warranty
- Connector A: 1 - RJ45 Male
- Connector B: 1 - RJ45 Male
- Color: Blue
- Product Length: 34.99 ft [10.67 m]
- Maximum Cable Length: 328 ft [100 m]
- Network Cable Type: Crossover Molded
- Carton Quantity: 40
- Shipping (Package) Weight: 0.86 lb [0.39 kg]
- Connectors: RJ45 Male, RJ45 Male
- Length: 35 ft., 10.7m
- Cable: 24 AWG, 4 pair UTP, general building use (CMG), FT4 fire rating, type CM (UL) certified, meets TIA/EIA 568B industry standards, Category 5e patch cable

