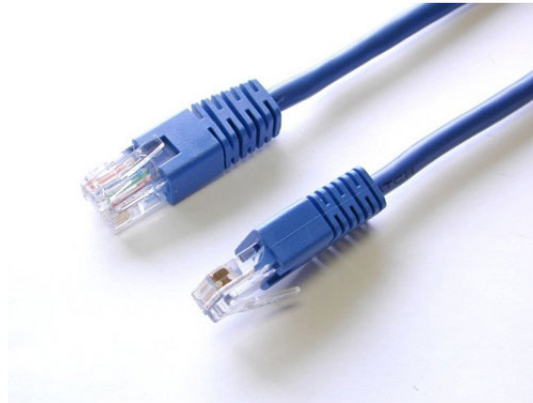


15ft Blue Molded Cat5e Crossover UTP Patch Cable

StarTech ID: M45CROSS15BL



StarTech.com's Cat5e UTP Crossover Patch Cables offer reliable Ethernet connections. This 15ft cable meets or exceeds all Category 5e specifications and features a durable blue jacket that simplifies departmental color coding, while providing rugged flexibility for network connections.

To ensure long-lasting performance, our high quality Cat5e UTP Crossover Patch Cables offer PVC molded strain relief that prevents the RJ45 connector termination point from bending at sharp angles - reducing the risk of cable damage, which could decrease network performance.

StarTech.com's 15ft blue Cat5e UTP Crossover Patch Cable is constructed of only top quality materials to ensure optimum durability and is backed by StarTech.com's Lifetime Warranty.

100% Copper - a better value StarTech.com Cat 5e cables are manufactured with copper conductors. While many cable manufacturers offer a "cheaper" cable based on a copper-coated aluminum core, we make no compromises on quality to ensure you receive top value for your cable investment.

24 Gauge Wire Our Cat 5 cables are constructed with 24 gauge copper wire to support a broad range of Ethernet applications, such as Power over Ethernet (PoE). Because we use a high quality 24 gauge wire, our cables easily sustain the nominal voltage (48v) capability required for Power over Ethernet applications, whereas the inferior quality offered by copper-coated aluminum cables may be subject to insufficient power delivery, heat build up, equipment damage and potentially, fire.

50 micron Gold Connectors StarTech.com Cat 5 cables offer high quality connectors comprised of 50 micron gold to ensure optimum conductivity while eliminating signal loss due to oxidation or corrosion.

Applications and Solutions

- Connects workstation to workstation
- Patches from hub to hub

Features

- Coloured Hoods for departmental colour coding
- StarTech Category 5e patch cables are carefully constructed and tested, to keep the Near End Crosstalk (NEXT) well within acceptable limits
- StarTech Category 5e Patch cables are constructed of top quality components
- The Strain relief prevents the cable from being bent at sharp angles at the connector to minimize the stress at the plug termination point

Technical Specifications

- Warranty: Lifetime warranty
- Connector A: 1 - RJ45 Male
- Connector B: 1 - RJ45 Male
- Color: Blue
- Product Length: 15 ft [4.57 m]
- Maximum Cable Length: 328 ft [100 m]
- Network Cable Type: Crossover Molded
- Carton Quantity: 90
- Shipping (Package) Weight: 0.4 lb [0.18 kg]
- Connectors: RJ45 Male, RJ45 Male
- Length: 15 ft., 4.6m
- Cable: 24 AWG, 4 pair UTP, general building use (CMG), FT4 fire rating, type CM (UL) certified, meets TIA/EIA 568B industry standards, Category 5e patch cable

