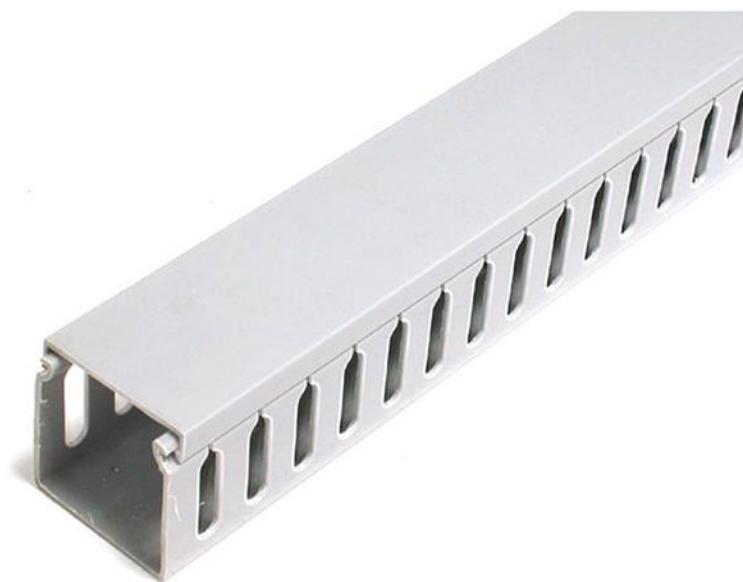


2x2in Open Slot Wiring Cable Raceway Duct with Cover

Product ID: AD2X2



This two-piece plastic wiring duct provides a protective channel for cables, letting you route cables more neatly and in turn prevent the mess and confusion of tangled cables.

The duct/raceway can be screwmounted, and features parallel openings along the length of the duct and a snap-lid design that provides easy access to cables while maintaining a tidy, organized appearance.

**Certifications, Reports
and Compatibility**



Applications

- Screws into wall to provide a protective channel for cables
- Snap-lid provides easy access to cables and gives a tidy appearance

Features

- Parallel openings on both sidewalls facilitates customization
- Benefits of PVC material: high impact resistance, warp-proof, and self-extinguishing

Special Notes / Requirements	Warranty	2 Years
	Note	Cable Capacity 80-90 pcs
Environmental	Operating Temperature	85°C (185°F) Max
Physical Characteristics	Color	Gray
	Materials	Polyvinyl Chloride (PVC)
	Product Height	2 in [50 mm]
	Product Length	5.6 ft [1.7 m]
	Product Width	2 in [50 mm]
	Weight of Product	24.7 oz [700 g]
Packaging Information	Package Height	2 in [50 mm]
	Package Length	6.7 in [17 cm]
	Package Width	2 in [50 mm]
	Shipping (Package) Weight	24.7 oz [700 g]
What's in the Box	Included in Package	1 - 2 x 2 inch Open Slot Wiring Duct w. Lid

Product appearance and specifications are subject to change without notice.