



* All images in this datasheet are for illustrative purposes only.

UHD Signage UP5Q-E

Sleek 4K UHD Signage Featuring Enhanced Security with LG Shield



Super High Resolution



LG Shield



4K On-Screen Display



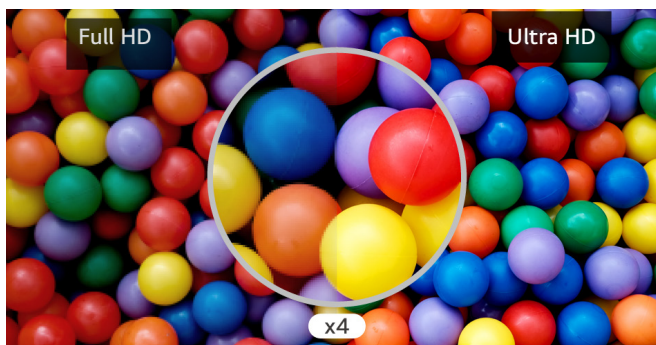
Various Screen Layout



webOS Smart Platform

UP5Q-E

Screen Size	86" / 75" / 65" / 55" / 49" / 43"
Screen Resolution	3,840 × 2,160 (UHD)
Brightness	500 nits
Surface Treatment (Haze)	86" / 75" / 55" / 43": 25% 65" / 49": 28%
Bezel Width	86" : 13.4 mm (Even) 75" : 12.9 mm (Even) 65" / 55" / 49" / 43" : 8.9 mm (T/R/L), 12.9mm (B)



High Resolution Display

It offers a resolution that is four times higher than FHD, satisfying customers visually. Additionally, the anti-glare coating on the screen reduces screen reflection in bright lighting environments, increasing visibility and legibility, providing customers with a comfortable screen.



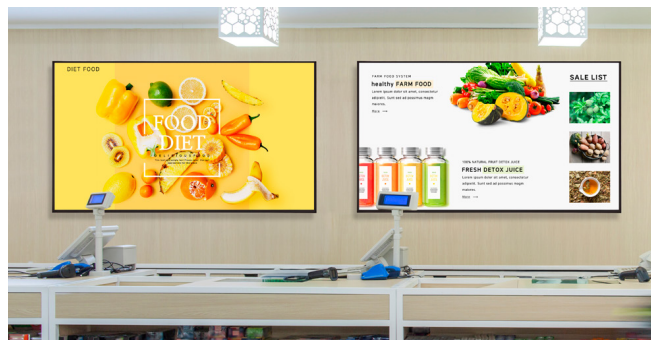
Comprehensive Security

webOS Signage goes beyond security measures at the operating system (OS) level. LG Shield employs a five-tiered defense system, encompassing server, application, operating system, system, and hardware. Each layer operates independently, providing comprehensive protection against various threats. Also webOS platform meets ETSI EN 303 645.



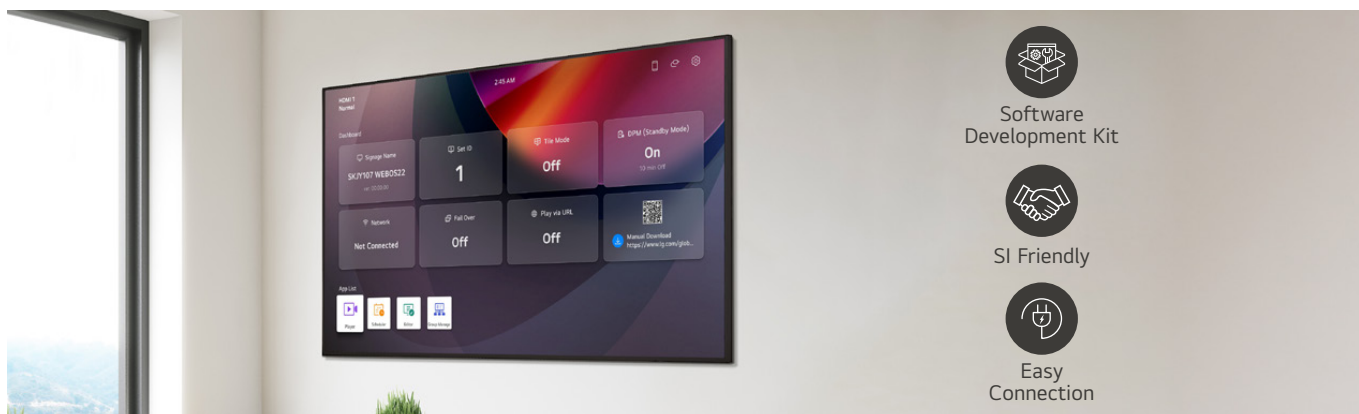
Multi-Screen Play with 4K OSD

The new webOS platform supports detailed text-based content playback with 4K OSD, ensuring that 4K app content is displayed smoothly. Thanks to its powerful CPU and GPU performance, it can deliver seamless content playback, even when handling graphics and data-intensive tasks. Additionally, the multi-screen feature offers 4-screen streaming capabilities, enhancing the overall user experience.



Smooth Content Play

Experience seamless 4K playback with UP5Q-E, ensuring smooth content transitions. With 32GB storage, it offers efficient file transfer through USB 3.0, reducing potential delays in content playback and updates.



Convenient webOS Platform

The UP5Q-E is equipped with a high-performance SoC that allows for multiple tasks to be performed without a separate media player. The webOS platform provides app development tools with an intuitive UI that enhances user convenience, enabling easy connection with external sensors and webOS partner apps to create an SI-friendly environment.



Durability that Provides Reliability

Optimized for multiple environments, the UP5Q-E is protected against salt, dust, iron powder, and humidity due to conformal coating applied specifically to selected areas of the power board. Additionally, its customer-centric features such as IP5X, 30-degree tilting, and Shock Monitoring provide both reliability and satisfaction.

- * Shock Monitoring refers to the feature where sensors detect impacts on the device and alert the user.
- * CTK testing laboratory has reported that the IP rating for these enclosures are IP 5X dust protected.

SuperSign Solutions

SuperSign is an integrated and intuitive content management solution for creative and organized digital signage content in your space, connecting customers to a range of services with convenient user experiences. There are a variety of versions such as SuperSign Cloud, so discover and enjoy the version that fits you.

- * SuperSign Cloud subscription sold separately.



Eye-Catching Large Screen

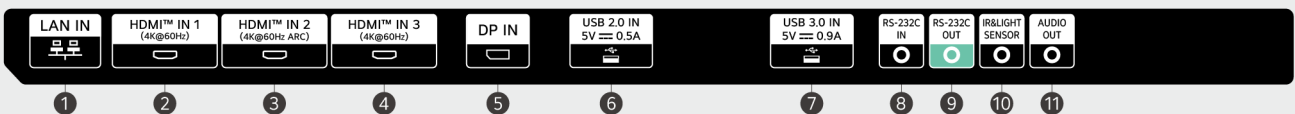
A large screen effectively captures people's attention as in addition to the standard sizes, UP5Q-E is available in 75/86-inch sizes.

CONNECTIVITY

86" / 75"



65" / 55" / 49" / 43"



- ① LAN IN
- ② HDMI IN 1
- ③ HDMI IN 2
- ④ HDMI IN 3
- ⑤ DP IN
- ⑥ USB 2.0 IN
- ⑦ USB 3.0 IN
- ⑧ RS-232C IN
- ⑨ RS-232C OUT
- ⑩ IR & LIGHT SENSOR
- ⑪ AUDIO OUT

SPECIFICATIONS

	86UP5Q-E	75UP5Q-E	65UP5Q-E	55UP5Q-E	49UP5Q-E	43UP5Q-E		
Panel	Screen Size (Inch)	86"	75"	65"	55"	49"	43"	
	Panel Technology	ADS	ADS	IPS	ADS	IPS	ADS	
	Back Light Type	Edge	Edge	Edge	Edge	Edge	Edge	
	Aspect Ratio	16:9	16:9	16:9	16:9	16:9	16:9	
	Native Resolution	3840 x 2160 (UHD)	3840 x 2160 (UHD)	3840 x 2160 (UHD)	3840 x 2160 (UHD)	3840 x 2160 (UHD)	3840 x 2160 (UHD)	
	Refresh Rate	120Hz	60Hz	60Hz	60Hz	60Hz	60Hz	
	Brightness (Typ.)	500 nits	500 nits	500 nits	500 nits	500 nits	500 nits	
	Contrast Ratio	1,200:1	1,200:1	1,100:1	1,200:1	1,100:1	1,200:1	
	Dynamic CR	1,000,000:1	1,000,000:1	1,000,000:1	1,000,000:1	1,000,000:1	1,000,000:1	
	Color Gamut	BT709 95%	BT709 95%	BT709 95%	BT709 95%	BT709 95%	BT709 95%	
	Viewing Angle (H x V)	178° x 178°	178° x 178°	178° x 178°	178° x 178°	178° x 178°	178° x 178°	
	Color Depth	1.07G (8bits + FRC)	1.07G (8bits + FRC)	10bit(D), 1.07Billion colors	1.07G (8bits + FRC)	10bit(D), 1.07Billion colors	1.07G (8bits + FRC)	
	Response Time	8m (G to G)	8m (G to G)	Tr : 8ms / Tf :10ms	8m (G to G)	Tr : 8ms / Tf :10ms	8m (G to G)	
	Surface Treatment (Haze)	25%	25%	28%	25%	28%	25%	
	Lifetime	Up to 50,000 Hrs	Up to 50,000 Hrs	Up to 50,000 Hrs	Up to 50,000 Hrs	Up to 50,000 Hrs	Up to 50,000 Hrs	
	Operation Hours (Hours / Day)	24/7	24/7	24/7	24/7	24/7	24/7	
Portrait / Landscape	Yes / Yes	Yes / Yes	Yes / Yes	Yes / Yes	Yes / Yes	Yes / Yes		
Connectivity (Jack Interface)	Input	HDMI In (3, 3,840 x 2,160 @ 60Hz, HDCP 2.2/1.4), DP In (3,840 x 2,160 @ 60Hz, HDCP 2.2/1.3), RS-232C In (4 Pin Phone-jack), R45 (LAN) In, IR In, USB In 3.0 Type A(1), USB 2.0 TypeA(1)						
	Output	Audio Out, RS-232C Out (4 Pin Phone-jack)						
Mechanical	Bezel Color	Black	Black	Black	Black	Black	Black	
	Bezel Width	13.4 mm (Even)	12.9 mm (Even)	T/R/L: 8.9 mm, B: 12.9 mm	T/R/L: 8.9 mm, B: 12.9 mm	T/R/L: 8.9 mm, B: 12.9 mm	T/R/L: 8.9 mm, B: 12.9 mm	
	Weight (Head)	lbs. / 53.0 kg	35.7 kg	24.2 kg	16.1 kg	13.6 kg	11.1 kg	
	Packed Weight	lbs. / 66.7 kg	44 kg	30.4 kg	20.5 kg	16.1 kg	12.8 kg	
	Monitor Dimensions (W x H x D)	1928.8 x 1099.8 x 29.7 mm (without IR, Handle)	1679.5 x 958.7 x 29.7 mm (without IR, Handle)	1450.3 x 830.3 x 29.7mm (Without IR)	1231.4 x 707.2 x 29.7mm (without IR)	1095.6 x 630.8 x 29.7mm (without IR)	963.0 x 556.2 x 29.7mm (without IR)	
	Carton Dimensions (W x H x D)	2100 x 1250 x 253 mm	1820 x 1115 x 200 mm	1600.0 x 970.0 x 172.0mm	1360.0 x 810.0 x 152.0mm	1215.0 x 736.0 x 152.0mm	1055.0 x 660.0 x 142.0mm	
	Handle	Yes	Yes	No	No	No	No	
	VESA™ Standard Mount Interface	600 x 400 mm	600 x 400 mm	600 x 400 mm	600 x 400 mm	600 x 400 mm	600 x 400 mm	
Key Feature	Internal Memory 32 GB, Wi-Fi/BT (Built-in), Sensor (Temperature Sensor, Auto Brightness Sensor (External IR), Acceleration (Gyro) Sensor), Local Key Operation, Built-in Speaker (10W X 2), webOS 8.0, Local Contents Scheduling, Group Manager, USB Plug & Play, Fail Over, Image (Booting Logo Image, No Signal Image), Sync (RS-232C Sync, Local Network Sync), PIP, PBP (4), Screen Share, Video Tag (4), Play via URL, Rotation (Screen Rotation, External Input Rotation), Gapless Playback, Tile Mode Setting (Max. 15 x 15), Setting Data Cloning, SNMR ISM Method, Auto Set ID, Status Mailing, Control Manager, Cisco Certification (TBD), Crestron Connected, Smart Energy Saving, PM Mode, Wake on LAN, Network Ready, Beacon, HDMI-CEC, SI Server Setting, webRTC, Prodiom							
Environment Conditions	Operation Temperature	32°F to 104°F / 0°C to 40°C	32°F to 104°F / 0°C to 40°C	32°F to 104°F / 0°C to 40°C	32°F to 104°F / 0°C to 40°C	32°F to 104°F / 0°C to 40°C	32°F to 104°F / 0°C to 40°C	
	Operation Humidity	10% to 80%	10% to 80%	10% to 80%	10% to 80%	10% to 80%	10% to 80%	
Power	Power Supply	100-240 Vac, 50/60 Hz	100-240 Vac, 50/60 Hz	100-240 Vac, 50/60 Hz	100-240 Vac, 50/60 Hz	100-240 Vac, 50/60 Hz	100-240 Vac, 50/60 Hz	
	Power Type	Built-In Power	Built-In Power	Built-In Power	Built-In Power	Built-In Power	Built-In Power	
	Power Consumption	Typ. / Max.	205 W / 297 W	160 W / 247 W	130 W / 205 W	103 W / 160 W	87 W / 140 W	69 W / 127 W
		BTU (British Thermal Unit)	699 BTU/Hr (Typ.), 1013 BTU/Hr (Max.)	546 BTU/Hr (Typ.), 843 BTU/Hr (Max.)	444 BTU/Hr (Typ.), 699 BTU/Hr (Max.)	351 BTU/Hr (Typ.), 546 BTU/Hr (Max.)	297 BTU/Hr (Typ.), 478 BTU/Hr (Max.)	235 BTU/Hr (Typ.), 433 BTU/Hr (Max.)
		Smart Energy Saving (70%)	144 W	112 W	91 W	72 W	61 W	56 W
DPM		0.5 W	0.5 W	0.5 W	0.5 W	0.5 W	0.5 W	
Power Off	0.5 W	0.5 W	0.5 W	0.5 W	0.5 W	0.5 W		
Sound	Built-in Speakers	Yes (10W X 2)	Yes (10W X 2)	Yes (10W X 2)	Yes (10W X 2)	Yes (10W X 2)	Yes (10W X 2)	
Certification	Safety	CB / NRTL	CB / NRTL	CB / NRTL	CB / NRTL	CB / NRTL	CB / NRTL	
	EMC	FCC Class "B" / CE / KC	FCC Class "B" / CE / KC	FCC Class "B" / CE / KC	FCC Class "B" / CE / KC	FCC Class "B" / CE / KC	FCC Class "B" / CE / KC	
	ERP / Energy Star	N/A (NewErP) / Yes	N/A (NewErP) / Yes	N/A (NewErP) / Yes	N/A (NewErP) / Yes	N/A (NewErP) / Yes	N/A (NewErP) / Yes	
	ePEAT (US Only)	Yes	Yes	Yes	Yes	Yes	Yes	
Software Compatibility	SuperSign CMS, SuperSign Control+, SuperSign WB, SuperSign Cloud, Mobile CMS, LG ConnectedCare							
Language	English, French, German, Spanish, Italian, Korean , Chinese(Simplified), Chinese(Original), Portuguese(Brazil), Swedish, Finnish, Norwegian, Danish, Russian, Japanese, Portugues(Europe), Dutch, Czech, Greek, Türkçe, Arabic, polski							
Warranty & Other	Basic	Remote Controller(include battery 2ea), Power Cord, QSG, Regulation Book, Phone to RS232C Gender, Cable Holder(2EA), AC Cord Holder (IEA)						
	Optional	Wall Mount (LSW640A/B)	Wall Mount (LSW640A/B)	Slim Wall Mount (WB21LMA/B), Wall Mount (DLW480A/B)	Slim Wall Mount (WB21LMA/B), Wall Mount (DLW480A/B)	Slim Wall Mount (WB21LMA/B), Wall Mount (DLW480A/B)	Slim Wall Mount (WB21LMA/B), Wall Mount (DLW480A/B)	
	Conformal Coating (Power Board)	Yes (Partial space coating)	Yes (Partial space coating)	Yes (Partial space coating)	Yes (Partial space coating)	Yes (Partial space coating)	Yes (Partial space coating)	
	IP Rating	IP5X	IP5X	IP5X	IP5X	IP5X	IP5X	
	Warranty	3 Year Limited	3 Year Limited	3 Year Limited	3 Year Limited	3 Year Limited	3 Year Limited	

* Specifications are subject to change without notice. Please make sure to check the product manual for details about product usage.