

# PHILIPS

## LCD monitor

### Business monitor

2000 series

27" (68.6 cm)

1920 x 1080 (Full HD)

27B2N2100



## Empower daily efficiency

This monitor delivers business efficiency. Not only is it equipped with essential features, but it also has ones that stand out like its 100hz refresh rate, SoftBlue, Flicker-Free, VESA mount, and more.

### Designed for the way you work

- Ultra Slim Bezel: for minimal edges and more screen
- SoftBlue Technology: for comfortable viewing
- Less eye fatigue with Flicker-free technology
- EasyRead mode for a paper-like reading experience
- Eyesafe certified blue light protection and color accuracy

### Great performance

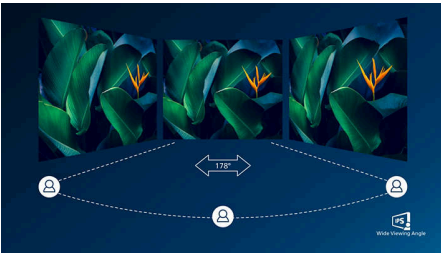
- IPS LED wide view technology for image and color accuracy
- 16:9 Full HD display for crisp detailed images
- 100Hz Fast Refresh: for ultra-smooth images

### Easy to experience

- Cable management reduces cable clutter for neat workspace
- VESA mount for convenience
- HDMI ensures universal digital connectivity

# Highlights

## IPS technology



IPS displays use an advanced technology which gives you extra wide viewing angles of 178/178 degree, making it possible to view the display from almost any angle. Unlike standard TN panels, IPS displays gives you remarkably crisp images with vivid colors, making it ideal not only for Photos, movies and web browsing, but also for professional applications which demand color accuracy and consistent brightness at all times.

## 16:9 Full HD display



Picture quality matters. Regular displays deliver quality, but you expect more. This display features enhanced Full HD 1920 x 1080 resolution. With Full HD for crisp detail paired with high brightness, incredible contrast and realistic colors expect a true to life picture.

## 100Hz Fast refresh



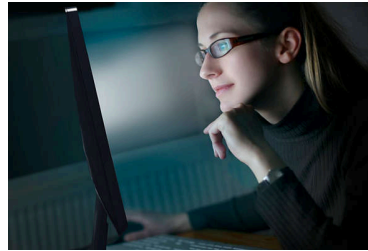
This Philips display refreshes the screen image up to 100 times per second which makes this monitor much faster than a standard display. It translates into super smooth actions on screen, guaranteeing the immediate visual benefits.

## Ultra Slim Bezel



This monitor makes your viewing experience feel more seamless and complete by reducing the amount of frame surrounding the screen. The Ultra Slim Bezel feature makes for an elegant transition from the screen to the narrow monitor bezel; thereby making it more beautiful in form and function.

## SoftBlue Technology



SoftBlue LED technology, combined with the monitor's low blue light panel, is an effective solution to reducing the adverse health effects

caused by high exposure to blue light. In this monitor's panel, the ratio of light is reduced by nearly 50% while the SoftBlue LED technology works simultaneously by reducing harmful blue light rays emitted from the screen. Not to mention, the SoftBlue LED technology is tested and certified by TUV Rheinland Eyesafe for its effectiveness in reducing blue light emissions.

## Flicker-free technology



Due to the way brightness is controlled on LED-backlit screens, some users experience flicker on their screen which causes eye fatigue. Philips Flicker-free Technology applies a new solution to regulate brightness and reduce flicker for more comfortable viewing.

## TUV Rheinland Eyesafe



Philips display meets TUV Rheinland Eyesafe® standard to truly protect you from the long exposure to blue light. The always-on blue light filter not only helps reduce digital eye strain, but also guarantees color integrity.



# Business monitor

LCD monitor

27B2N2100/27

## Highlights

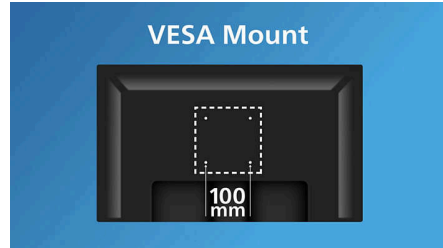
### HDMI Ready



An HDMI-ready device has all the required hardware to accept High-Definition Multimedia Interface (HDMI) input. A HDMI cable enables high-quality digital video and audio all

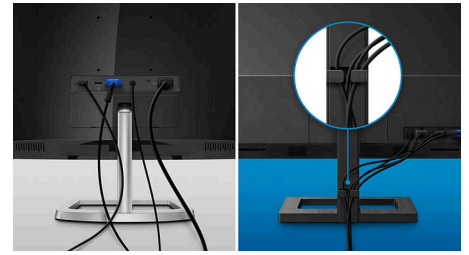
transmitted over a single cable from a PC or any number of AV sources (including set-top boxes, DVD players, A/V receivers and video cameras).

### VESA mount for convenience



VESA mount for convenience

### Cable management



Cable management is an intimate design that maintains tidy workspace by organizing cables and wires required for the operation of a display device.



## Specifications

### Picture/Display

**Panel Size:** 27 inch/68.6 cm  
**Aspect ratio:** 16:9  
**LCD panel type:** IPS technology  
**Backlight type:** W-LED system  
**Pixel pitch:** 0.3114 (H)mm x 0.3114 (V)mm  
**Optimum resolution:** 1920x1080@60Hz  
**Brightness:** 250 cd/m<sup>2</sup>  
**Display colors:** 16.7 M (8 bit)  
**Color gamut (typical):** NTSC area: 104%, sRGB area: 99%\*  
**Contrast ratio (typical):** 1500:1  
**SmartContrast:** 50,000,000:1  
**Response time (typical):** 4 ms (Gray to Gray)\*  
**Viewing angle:** 178° (H) / 178° (V), @ C/R > 10  
**Picture enhancement:** SmartImage  
**Maximum resolution:** 1920x1080@75Hz(VGA)  
1920x1080@100Hz(HDMI)  
**Effective viewing area:** 597.89(H)x 336.31(V) mm  
**Scanning Frequency:** HDMI: 30k - 115kHz (H) / 48 - 100 Hz (V) VGA: 30k - 85kHz (H) / 48 - 75 Hz (V)  
sRGB  
SoftBlue  
Flicker-free  
Pixel Density: 109 PPI  
**Display Screen Coating:** Anti-Glare, 3H, Haze 25%  
EasyRead  
Adaptive sync  
EyeSafe

### Connectivity

**Signal Input:** VGA x 1, HDMI 1.4 x 1  
**Sync Input:** Separate Sync, Sync on Green  
**Audio (In/Out):** Audio Out x 1  
**HDCP:** HDCP 1.4 (HDMI)

### Convenience

**Plug & Play Compatibility:** DDC/CI, Mac OS, sRGB, Windows 11 / 10  
**User convenience:** SmartImage, Input, Brightness, Menu, Power On/Off  
**OSD Languages:** Brazil Portuguese, Czech, Dutch, English, French, Finnish, German, Greek, Hungarian, Italian, Japanese, Korean, Portuguese, Polish, Russian, Simplified Chinese, Spanish, Swedish, Traditional Chinese, Turkish, Ukrainian

**Other convenience:** Kensington lock, VESA mount (100x100mm)  
**Control software:** SmartControl

### Stand

**Tilt:** -5/25 degree

### Power

**ECO mode:** 9.5 W (typ.)  
**Power supply:** Built-in, 100-240VAC, 50-60Hz  
**Off mode:** 0.3 W (typ.)  
**On mode:** 13.5 W (typ.) (EnergyStar test method)  
**Standby mode:** 0.3 W (typ.)  
**Power LED indicator:** Operation - White, Standby mode- White (blinking)

### Dimensions

**Packaging in mm (WxHxD):** 690x455x141 mm  
**Product without stand (mm):** 617x357x46 mm  
**Product with stand(max height):** 617x456x206 mm

### Weight

**Product with packaging (kg):** 6.56 kg  
**Product with stand (kg):** 3.81 kg  
**Product without stand (kg):** 3.49 kg

### Operating conditions

**Altitude:** Operation: +12,000ft (3,658m), Non-operation: +40,000ft (12,192m)  
**Temperature range (operation):** 0°C to 40 °C  
**Relative humidity:** 20%-80 %  
**Temperature range (storage):** -20°C to 60 °C  
**MTBF (demonstrated):** 70,000 hrs (excluded backlight)

### Sustainability

**Environmental and energy:** Energy Star, EPEAT\*, RoHS  
**Post consumer recycled plastic:** 85%  
**Recyclable packaging material:** 100 %  
**Specific Substances:** Mercury free, PVC / BFR free housing

### Compliance and standards

**Regulatory Approvals:** CB, CE Mark, EPA, CEL, CCC, CECP, UKCA, EMF, FCC, ICES-003, eyesafe<sup>®</sup> CERTIFIED 2.0, TÜV Rheinland Low Blue Light (Hardware Solution)

### Cabinet

**Finish:** Texture  
**Foot:** Black  
**Front bezel:** Black  
**Rear cover:** Black



\* Response time value equal to SmartResponse

\* sRGB Coverage based on CIE1931, NTSC Area based on CIE1976

\* EPEAT rating is valid only where Philips registers the product. Please visit <https://www.epeat.net/> for registration status in your country.

\* The monitor may look different from feature images.

\* The products and accessories listed on this leaflet may differ by country and region.