

PERFORMANCE

Processor

MediaTek MT8183 (8C, 4x A73 @2.0GHz + 4x A53 @2.0GHz)

Graphics

Integrated ARM Mali-G72 MP3 GPU

Chipset

MediaTek SoC Platform

Memory

4GB Soldered LPDDR4x-1866

Memory Slots

Memory soldered to systemboard, no slots, dual-channel

Max Memory

4GB soldered memory, not upgradable

Storage

64GB eMMC 5.1

Storage Support

64GB eMMC 5.1 on systemboard

Card Reader

microSD Card Reader

Optical

None

Audio Chip

High Definition (HD) Audio, Maxim MAX98357A Dialog DA7219 codec

Speakers

Stereo speakers, 2W x2

Camera

HD 720p with Privacy Shutter

Microphone

2x, Array

Battery

Integrated 42Wh

Power Adapter

45W USB-C® (3-pin)

DESIGN

Display⁽¹⁾

14" FHD (1920x1080) IPS 300nits Anti-glare, Touch

Touchscreen

On-cell, 10-point Multi-touch

Keyboard

Non-backlit, English

Case Color

Arctic Grey

Surface Treatment

Texture Painting

Case Material

PC-ABS (Top), PC-ABS (Bottom)

Dimensions (WxDxH)⁽²⁾

336 x 221 x 18.6 mm (13.23 x 8.7 x 0.73 inches)

Weight⁽³⁾

Starting at 1.3 kg (2.87 lbs)

SOFTWARE

Operating System

ChromeOS

Bundled Software

None

CONNECTIVITY

Ethernet

No Onboard Ethernet

WLAN + Bluetooth®

11ac 2x2 + BT5.0

Standard Ports

- 1x USB 2.0
- 1x USB-C 2.0 (support data transfer, Power Delivery 2.0 and DisplayPort™ 1.1a)
- 1x microSD card slot
- 1x Headphone / microphone combo jack (3.5mm)

SECURITY & PRIVACY

Security Chip

Google Security Chip H1

Fingerprint Reader

None

Physical Locks

Kensington® Security Slot™, 3 x 7 mm

Other Security

Camera privacy shutter

MANAGEABILITY

SERVICE

Base Warranty

1-year, Courier or Carry-in

Included Upgrade

None

ACCESSORIES

CERTIFICATIONS

Green Certifications

- ENERGY STAR® 8.0
- ErP Lot 3
- RoHS compliant

MODEL

TopSeller : No

Announce Date : 2021-04-19

EAN / UPC / JAN : 195477876095

End of Support : 2027-05-19



To see more note information, please link to https://psref.lenovo.com/Detail/IdeaPad_3_Chrome_14M836?M=82KN0001US

· Lenovo reserves the right to change specifications or other product information without notice.
· Battery life is an estimated maximum. Actual battery life may vary by hardware or system settings, active applications, battery conditioning, etc.
· California Electronic Waste Recycling Fee In California, per state law, Lenovo charges an electronic waste recycling fee on this covered device at the time of sale of the product. For more information, go to: <https://www.calrecycle.ca.gov/Electronics/Consumer>

Premium Care - Advanced Support from Real People. Real Fast.



REAL PERSON

Choose how you want to reach us - through the phone, chat or email - our expert technicians will take care of you.



REAL FAST

Highly trained technicians will provide you real-time solutions, whatever the issue, on your first contact. If needed, our team will schedule an onsite visit for the next business day.



HASSLE FREE

'Getting started' and 'how-to' assistance for hardware and software. Easy solutions that are simple to reach - that's how Premium Care delivers you the ideal support experience.



PC HEALTH CHECK

Free annual PC Health Check that allows our experts to spot issues before you do so they can resolve them quickly and help you avoid PC problems.

Accidental Damage Protection - Protection of your PC from the unexpected.

Experience shows that a significant portion of devices may be damaged (and not covered under warranty) in the first three years. Lenovo's Accidental Damage Protection service covers accidents beyond the system warranty such as drops, spills, bumps and even electrical surges. Make sure your new device has maximum protection, avoid unplanned costs and get peace of mind.

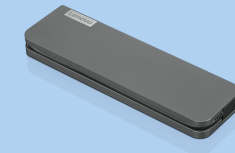
Base Warranty – Included with the systems you purchase, default 1- or 3-year coverage window.

Warranty Extensions & Upgrades – Service and protection that's right for your circumstances.

- Pick Up & Return Courier
- Onsite Support
- Technician Installed Customer
- Replaceable Unit Service
- International Warranty Upgrade

Lenovo may not offer the products, services or features discussed in this document in all regions. Lenovo may withdraw an offering at any time. Consult your local representative for information on offerings available in your area. Lenovo reserves the right to change specifications or other product information without notice. Lenovo is not responsible for photographic or typographical errors. Lenovo provides this publication "as is" without warranty of any kind, either express or implied, including the implied warranties of merchantability or fitness for a particular purpose.

Recommended Accessories



Lenovo USB-C Mini Dock_US

40AU0065US

Expand Your Potential with An Universal Mini Dock; Lenovo understands that modern business depends on a wide variety of PC's and even brands to meet their business needs. To make this easier Lenovo USB-C Mini dock is ...

Recommended Services

BEST	3Y Premium Care Plus upgrade from 1Y Courier/Carry-in (5WS1J38620)
BETTER	3Y Premium Care with Onsite upgrade from 1Y Courier/Carry-in (5WS0T73714)
GOOD	3Y Courier/Carry-in upgrade from 1Y Courier/Carry-in (5WS0K75663)

For a full list of accessories and services, please visit:
<https://smartfind.Lenovo.com>

Lenovo

PSREF
Product Specifications
Reference