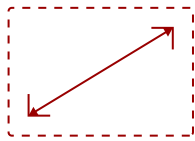


## VA2409M - 24" 1080P IPS 75HZ ADAPTIVE SYNC MONITOR WITH HDMI, VGA

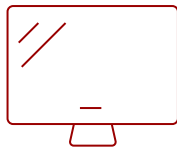
### Key Features

---

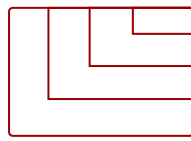
- 24 Inch Full HD (1920x1080p) IPS monitor with thin bezels and 75Hz refresh rate
- Flicker-Free technology and Blue Light Filter for reduced eye fatigue
- VESA Adaptive Sync technology enables smooth frame rates to aid you in battle
- Optimized view settings offer "Game," "Movie," "Web," "Text," and "Mono" presets
- The VA2409M supports laptops, PCs, Macs and more with HDMI and VGA inputs



24  
DISPLAY



IPS  
PANEL



1920 x 1080  
RESOLUTION



### Product Description

---

Featuring enhanced wide-angle viewing, stunning resolution and flexible connectivity options, the ViewSonic® VA2409m monitor is a great addition to any workspace. This 24" (23.6" viewable) VA2409m monitor comes with SuperClear® IPS panel technology so you can experience stunning brightness and contrast at nearly any viewing angle. With a minimalist edge-to-edge screen and a 3-sided frameless bezel, you can easily create a seamless multi-monitor setup. Connect laptops, PCs, gaming consoles and other multimedia devices using the HDMI port. And with powerful features like flicker-free technology and a blue light filter, you can work for longer with less strain. Enjoy a 3 year limited warranty, industry-leading pixel performance policy and so much more with the ViewSonic VA2409m monitor.

### Specifications

---

<b>Screen Size</b>	24
<b>Viewable Area (in.)</b>	23.6
<b>Panel Type</b>	IPS
<b>Display Resolution</b>	1920 x 1080
<b>Display Resolution</b>	Full HD (1920x1080)
<b>Static Contrast Ratio</b>	1,000:1
<b>Dynamic Contrast Ratio</b>	50,000,000:1
<b>Light Source</b>	LED
<b>Brightness</b>	250 cd/m2
<b>Colors</b>	16.7M
<b>Color Space Support</b>	8 bit (6 bit + FRC)
<b>Aspect Ratio</b>	16:9
<b>Response Time (Typical GTG)</b>	3ms
<b>Viewing Angles</b>	178° horizontal, 178° vertical
<b>Backlight Life (Hours)</b>	30,000
<b>Panel Surface</b>	Anti-Glare type, Hard-coating (3H), Haze 25%
<b>PC Resolution (max)</b>	1920 x 1080
<b>Mac® Resolution (max)</b>	1920 x 1080
<b>3.5mm Audio Out</b>	1
<b>VGA</b>	1
<b>HDMI 1.4 In</b>	1
<b>Internal Speakers</b>	2W (x2)
<b>Eco Mode (Conserve)</b>	17
<b>Eco Mode (optimized)</b>	19
<b>Consumption (typical)</b>	21
<b>Consumption (max)</b>	24
<b>Voltage</b>	AC 100-240V (universal), 50-60Hz
<b>Stand-by</b>	0.3
<b>Power Supply</b>	Internal
<b>Cable Organization</b>	No
<b>Kensington Lock Slot</b>	1
<b>Physical Controls</b>	Key 1 (favorite), Key 2, Key 3, Key 4, Key 5 (power)
<b>On Screen Display</b>	Input Select, Audio Adjust, ViewMode, Color Adjust, Manual Image Adjust, Setup Menu
<b>Temperature</b>	32-104° F (0 - 40° C)
<b>Humidity (non-condensing)</b>	20-90%
<b>VESA Compatible</b>	100 x 100 mm

<b>Frequency Horizontal</b>	VGA (24 ~ 86 KHz)   HDMI 1.4 (24 ~ 86 KHz)
<b>Frequency Vertical</b>	VGA (48 ~ 75 Hz)   HDMI 1.4 (48 ~ 75 Hz)
<b>Tilt (Forward/Back)</b>	3° / 20°
<b>Net (lbs)</b>	6.4
<b>Net Without Stand (lbs)</b>	5.6
<b>Gross (lbs)</b>	9.2
<b>Net (kg)</b>	2.9
<b>Net Without Stand (kg)</b>	2.5
<b>Gross (kg)</b>	4.2
<b>Packaging (in.)</b>	23.7" (W) x 16.1" (H) x 4.7" (D)
<b>Physical (in.)</b>	21" (W) x 16.5" (H) x 7.4" (D)
<b>Physical Without Stand (in.)</b>	21" (W) x 12.6" (H) x 2" (D)
<b>Packaging (mm)</b>	602 mm (W) x 408 mm (H) x 120 mm (D)
<b>Physical (mm)</b>	534 mm (W) x 419 mm (H) x 189 mm (D)
<b>Physical Without Stand (mm)</b>	534 mm (W) x 321 mm (H) x 51 mm (D)
<b>Regulations</b>	cTUVus, FCC-B, ICES003, CEC, NOM, Mexico Energy
<b>PACKAGE CONTENTS</b>	LCD Display, Power Cable, HDMI Cable, Quick Start Guide
<b>Recycle/Disposal</b>	Please dispose of in accordance with local, state or federal laws.
<b>Warranty</b>	Three-year limited warranty on parts, labor and backlight



**Contact Sales**  
[ViewSonic.com](http://ViewSonic.com)

888.881.8781  
 email:  
[salesinfo@viewsonic.com](mailto:salesinfo@viewsonic.com)