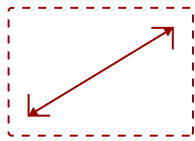


## IFP4320-E1 - 43" VIEWBOARD INTERACTIVE FLAT PANEL BUNDLE WITH WIFI DONGLE

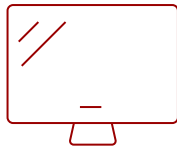
### Key Features

---

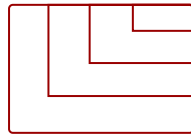
- All-in-One Solution
- ViewBoard Interactive Flat Panel
- Faster WiFi
- Faster WiFi



43  
**DISPLAY**



**PANEL**



**RESOLUTION**



### Product Description

---

Ideal for education environments, this all-in-one ViewBoard bundle includes a 43" ViewBoard IFP4320 4K interactive display, a VSB050 WiFi dongle, and VB-PEN-005 active stylus. Simply connect the VSB050 WiFi dongle to the interactive display for wireless content sharing, and begin writing with the VB-PEN-005 for engaging lessons.

### Specifications

---

More Information

**Display Type**

LCD

**Screen Size**

43

<b>Viewable Area (in.)</b>	42.51
<b>Light Source</b>	LED
<b>Display Resolution</b>	3840 x 2160
<b>Aspect Ratio</b>	16:9
<b>Static Contrast Ratio</b>	1,000:1
<b>Brightness</b>	350 cd/m2
<b>Response Time (Typical GTG)</b>	9ms
<b>Viewing Angles</b>	178° horizontal, 178° vertical
<b>Panel Surface</b>	Anti-Glare, 4H, Haze 12%
<b>Internal Speakers</b>	10W (x2)
<b>HDMI 2.0 In</b>	1
<b>3.5mm Audio In</b>	1
<b>3.5mm Audio Out</b>	1
<b>SPDIF Audio Out</b>	1
<b>USB 2.0</b>	2
<b>USB Type C</b>	1
<b>USB B Touch Port</b>	1
<b>Ethernet LAN (RJ45)</b>	1
<b>Intel® OPS Slot In (80-pin)</b>	1
<b>Voltage</b>	100-240 VAC
<b>Consumption (typical)</b>	120W
<b>Stand-by</b>	<0.5W
<b>On Screen Display</b>	Input, Volume, Backlight, Audio, Screen, Display, Adjust
<b>Remote Control</b>	Yes
<b>Temperature</b>	32-104° F (0 - 40° C)
<b>Humidity (non-condensing)</b>	20-80%
<b>Touch Technology</b>	In-cell
<b>Touch Points</b>	Android: 10
<b>Net (lbs)</b>	40.59
<b>Gross (lbs)</b>	49.89
<b>Net (kg)</b>	18.41
<b>Gross (kg)</b>	22.63
<b>Packaging (in.)</b>	47.24 x 30.9 x 8.27
<b>Physical (in.)</b>	38.072 x 22.943 x 8.155
<b>Packaging (mm)</b>	1200 x 785 x 210
<b>Physical (mm)</b>	967 x 582.8 x 207.1

**VESA Compatible**

400 x 400 mm

**Warranty**

3-year limited warranty on parts, labor and backlight, onsite warranty

**Recycle/Disposal**

Please dispose of in accordance with local, state or federal laws.


**PACKAGE CONTENTS**

ID2456 display, Power cable, Type-C cable, HDMI cable, USB cable, MPP2.0 ACP, Pen tether, Pen tip, Quick Start Guide

**Regulations**

cTUVus, FCC, ENERGY STAR 7.0, Mexico Energy, CE, CB, RoHS, ErP, WEEE



**Contact Sales**  
[ViewSonic.com](http://ViewSonic.com)  
888.881.8781   
email:  
[salesinfo@viewsonic.com](mailto:salesinfo@viewsonic.com)