



OPTIPLEX

3000

Thin Client

Sleek and mighty
desktop thin client
optimized for Dell
cloud client solutions



DELL Technologies



3000

Thin Client



Fast and smart user experiences

- Built with Intel® Celeron and Pentium Quad Core™ processors (Celeron N5105 2GHz/2.9GHz and Pentium N6005 2GHz/3.3GHz Quad Core)
- Up to 16GB DDR4 2933MHz memory, 32GB eMMC flash storage with optional 256GB PCIe SSD
- Up to three 4K displays @60Hz⁷ with 2 native DisplayPort™ 1.4 interfaces and optional DP 1.4b, HDMI 2.0 or USB-C with alt-DP or VGA
- Optional Intel® Wi-Fi 6/6E AX210 (6GHz band)²
- Optimize comfort and productivity with OptiPlex Micro stands and mounts.



Intelligent, unified approach to IT

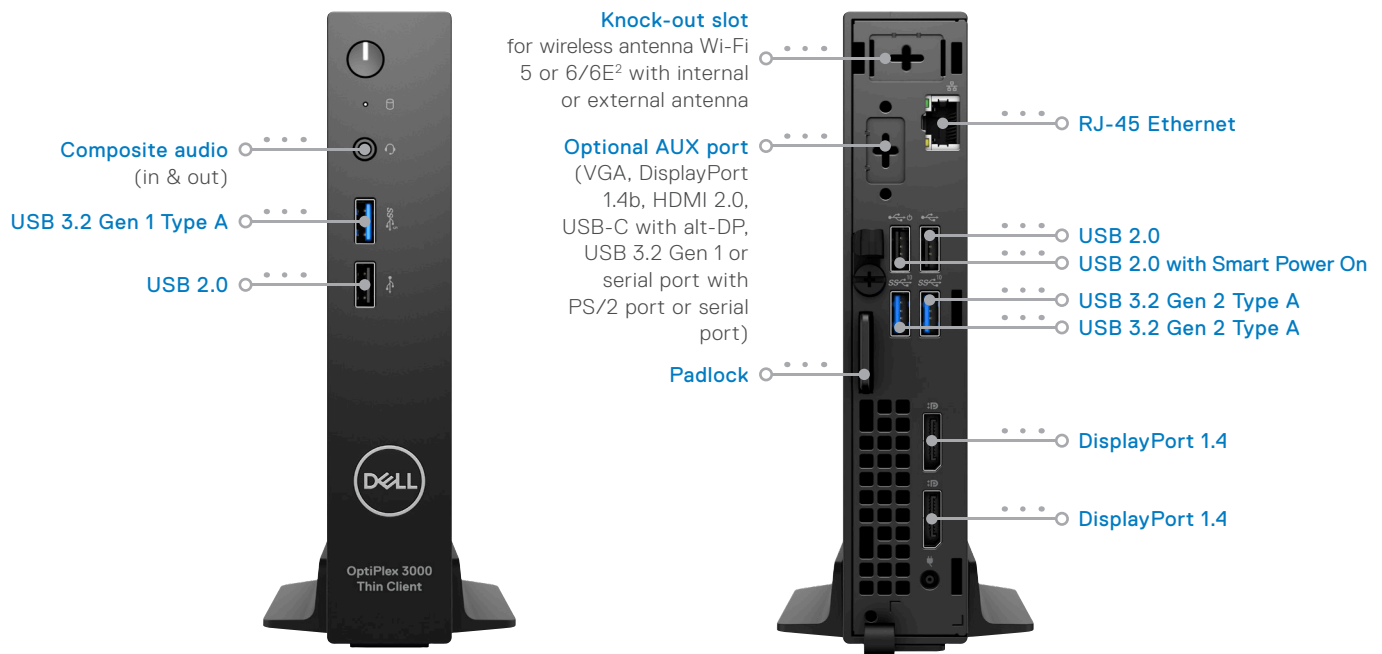
- Three OS options: Dell ThinOS, Ubuntu Linux with Dell Hybrid Client or Windows 10 IoT Enterprise LTSC 2021⁴ and hybrid cloud management with Wyse Management Suite Pro
- Ultra-compact 1.2L desktop thin client, vertical fan-less orientation for a quiet, durable computing experience
- Long lifecycle with 3-year next business day warranty.



3000 Thin Client

TECHNOLOGY THAT REVOLVES AROUND YOU

The most secure¹ and versatile thin client, now designed by OptiPlex, the trusted name in desktop innovation for 29 years.



Built with Intel® Celeron and Pentium Quad Core™ processors (Celeron N5105 2GHz/2.9GHz and Pentium N6005 2GHz/3.3GHz Quad Core)

Three OS options:

Dell ThinOS, Ubuntu Linux 20.04 with Dell Hybrid Client or Windows 10 IoT Enterprise LTSC 2021⁴ and hybrid cloud management with Wyse Management Suite Pro.

Ultra-compact 1.2L desktop thin client, vertical **fan-less** orientation for a quiet, durable computing experience

Up to **16GB DDR4 2933MHz memory**, 32GB eMMC flash storage with optional 256GB PCIe SSD

Up to **three 4K displays** @60Hz7 with 2 native DisplayPort™ 1.4 interfaces and optional DP 1.4b, HDMI 2.0 or USB-C with alt-DP or VGA

Optional **Intel® Wi-Fi 6/6E AX210** (6GHz band)²

Long lifecycle with 3-year next business day warranty

Optimize comfort and productivity with OptiPlex Micro stands and mounts

3000 Thin Client

Sustainability on OptiPlex

OptiPlex is a leading platform for sustainable innovation and utilizes the most recycled content of all Dell PCs with up to 60% recycled plastic and closed-loop materials in its design.



Design

1st

OptiPlex was the first Dell product made with recycled materials in 2007.*

Sustainable Materials

60%

OptiPlex desktops contain up to 60% recycled and closed-loop materials.

Packaging Innovation

100%

100% recycled paper pulp used in packaging.

OPTIPLEX HAS

100+

EPEAT registered products**



40+

TCO certified configurations



8.0

ENERGY STAR® throughout the portfolio



Our most sustainable OptiPlex portfolio, now shipping with our most sustainable packaging ever.

3000 Thin Client

Enhance your digital workspaces with more security and agility

Meet the evolving needs of the workforce and increase efficiency without compromising on security with Cloud Client Workspace software. Learn more at www.dell.com/wyse.

Optimized user experience

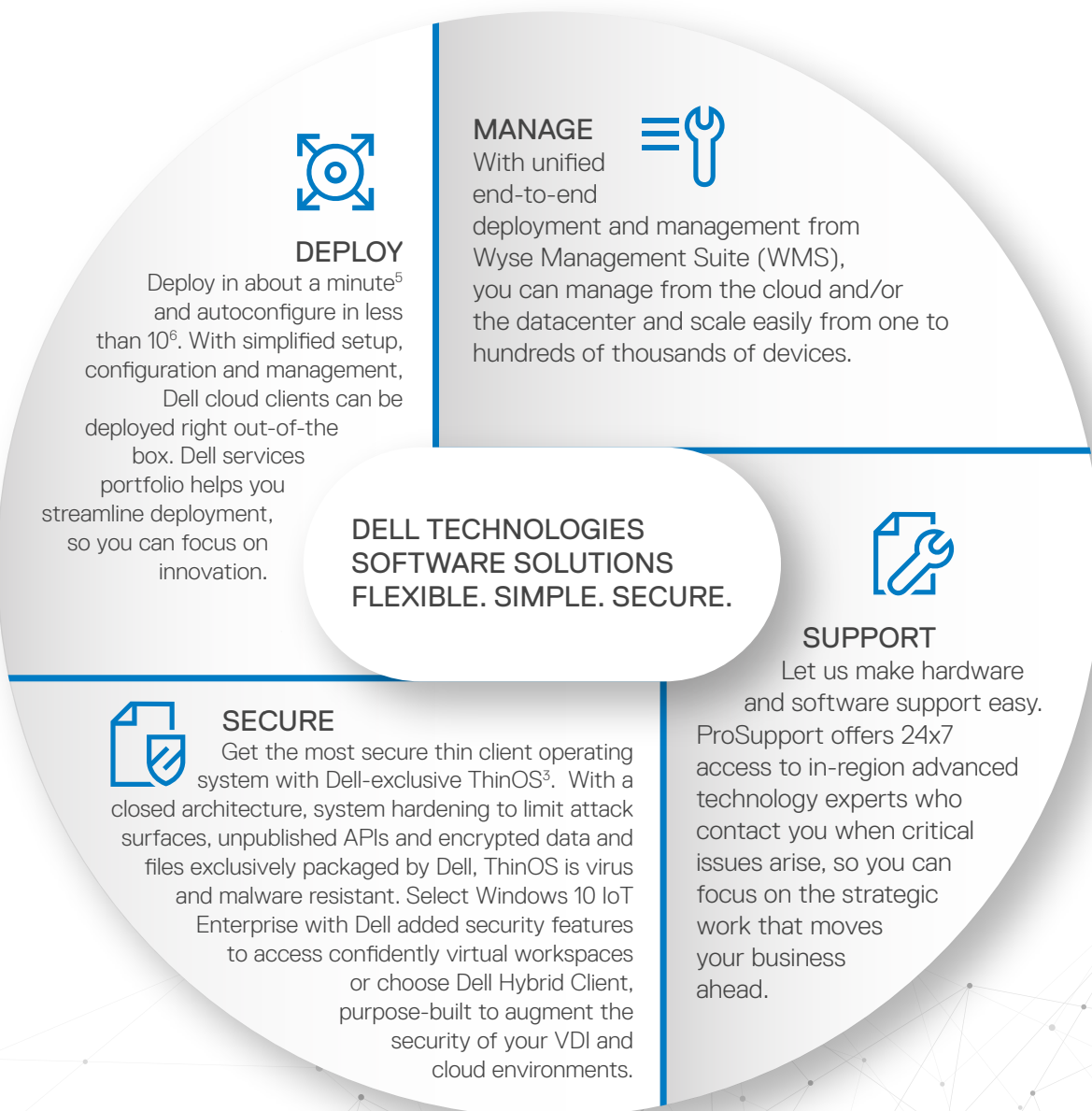
Access digital and virtual workspaces with unprecedented simplicity and flexibility.

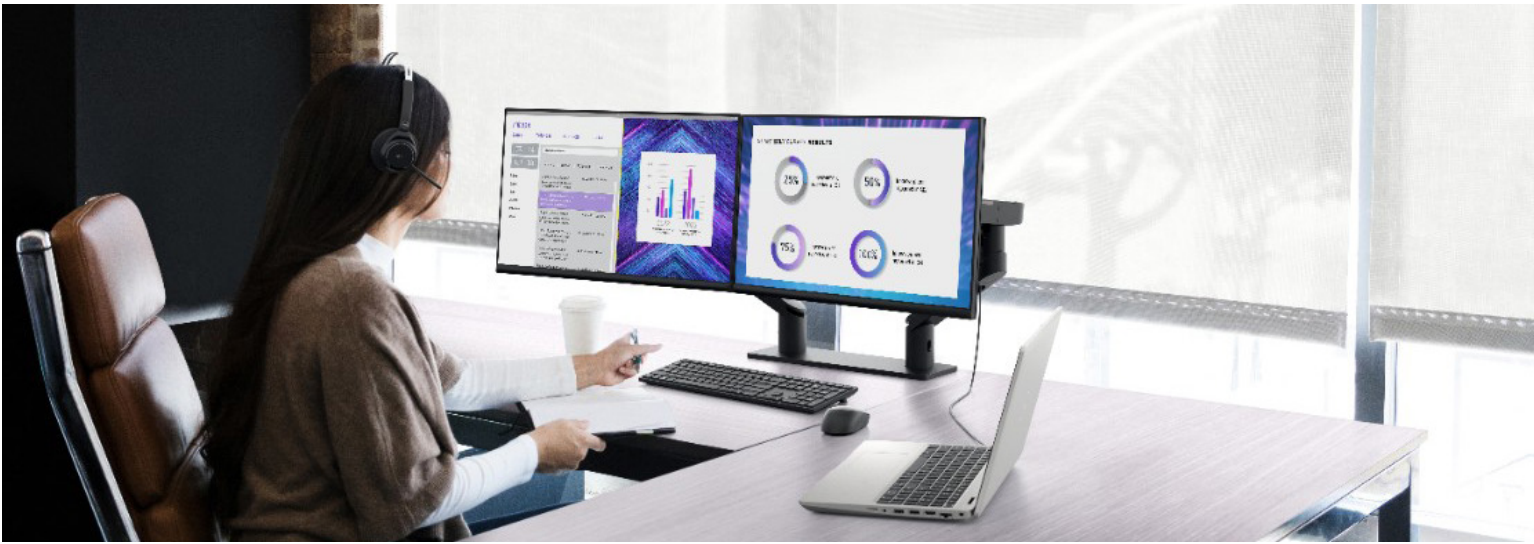
Unified approach to I.T.

Modern management with hybrid cloud deployment provides greater control and agility.

Secure by design

Work confidently from anywhere with solutions purpose-built to augment the security of your VDI and cloud environments





RECOMMENDED ACCESSORIES

PURPOSE-BUILT



Dell 24 Monitor – P2422H

Stay productive no matter where you work with this sleek 23.5" FHD monitor with ComfortView Plus.



Dell Pro Wireless Keyboard and Mouse – KM5221W

Get productive with a quiet, full-size keyboard and mouse combo with programmable shortcuts and 36 months battery life.



Dell Pro Stereo Headset – WH3022

Exceptional audio clarity with this Teams certified wired headset with a customized fit.

CUSTOM MOUNTS



OptiPlex Micro & Thin Client All-in-One Stand - MFS22

Adjustable, compact stand for your micro creates a clean, open workspace with minimal cables.



OptiPlex Micro & Thin Client Dual VESA Mount with Adapter Bracket

Versatile micro mounting solution for ideal use with Dell MSA20 or Dell MDA20 Monitor Arms.



Dell Single Monitor Arm – MSA20

Create a clean work space and reduce cable clutter by mounting your OptiPlex securely behind your monitor.



OPTIPLEX

3000 Thin Client

FEATURE TECHNICAL SPECIFICATION

MODEL NUMBER¹	OptiPlex 3000 Thin Client
PROCESSOR OPTIONS¹	Intel® Pentium Silver N6005, 4 MB cache, 4 cores, 4 threads, 2.00 GHz to 3.30 GHz, 10 W Intel® Celeron N5105, 4 MB cache, 4 cores, 4 threads, 2.00 GHz to 2.90 GHz, 10 W
OPERATING SYSTEM¹	Ubuntu® Linux® 20.04 LTS, 64-bit Ubuntu® Linux® 20.04 LTS, 64-bit + Dell Hybrid Client Dell ThinOS 9.1.x Windows 10 IoT Enterprise LTSC 2021 ¹
MEMORY OPTIONS^{1,2,3}	4 GB, 1 x 4 GB, DDR4, 2933 MHz, single-channel 8 GB, 2 x 4 GB, DDR4, 2933 MHz, dual-channel 8 GB, 1 x 8 GB, DDR4, 2933 MHz, single-channel 16 GB, 2 x 8 GB, DDR4, 2933 MHz, dual-channel
PRIMARY HARD DISK DRIVE^{1,5}	32 GB eMMC, on-board M.2 2230, 256 GB, PCIe NVMe Gen3 x4, SSD
VIDEO CARD	Intel® UHD Graphics
DISPLAY¹	Dell 24 Monitor - P2422H Dell UltraSharp 24 Monitor - U2422H
CASE COLOR	Dell Standard Black, Resin
PRODUCTIVITY SOFTWARE¹	Dell Hybrid Client 1.5 (optional)
SECURITY SOFTWARE	D-Pedigree Microsoft Windows BitLocker ¹⁴
WARRANTY^{8,10}	1-year Basic Warranty with Hardware Service on site service after remote diagnosis 2-year Basic Warranty Extension 3-year Basic Warranty Extension 4-year Basic Warranty Extension 5-year Basic Warranty Extension 1-year ProSupport with Next Business Day on-site service 2-year ProSupport with Next Business Day on-site service 3-year ProSupport with Next Business Day on-site service 4-year ProSupport with Next Business Day on-site service 5-year ProSupport with Next Business Day on-site service 1-year ProSupport Plus for Client with Next Business Day on-site service 2-year ProSupport Plus for Client with Next Business Day on-site service 3-year ProSupport Plus for Client with Next Business Day on-site service 4-year ProSupport Plus for Client with Next Business Day on-site service 5-year ProSupport Plus for Client with Next Business Day on-site service
ACCIDENTAL DAMAGE SERVICES	1-year Accidental Damage Service 2-year Accidental Damage Service 3-year Accidental Damage Service 4-year Accidental Damage Service 5-year Accidental Damage Service
KEYBOARD¹	Dell Pro Wireless Keyboard and Mouse - KM5221W
PORTS	Front: 1 USB 2.0 port 1 USB 3.2 Gen 1 port 1 Universal audio jack Rear: 2 DisplayPort 1.4 2 USB 3.2 Gen 2 ports 1 USB 2.0 port 1 USB 2.0 port with Smart Power On 1 RJ45 Ethernet port 1 VGA port (optional) 1 USB 3.2 Gen 1 Type-C® port with DisplayPort Alt mode (optional) 1 DisplayPort 1.4 (optional) 1 HDMI 2.0 port (optional) 1 Serial with PS/2 keyboard/mouse port (optional) 1 Serial port (optional) 1 power adapter port

FEATURE TECHNICAL SPECIFICATION

OPTICAL DRIVE	No optical drive
SLOTS	1 Kensington security-cable slot 1 Padlock ring 1 M.2 2230 slot for Wi-Fi and Bluetooth card 1 M.2 2230 slot for SSD
DIMENSIONS	US: Height: 7.17 in. (182.00 mm) Width: 1.42 in. (36.00 mm) Depth: 7.00 in. (178.00 mm) Weight: 2.06 lb (0.94 kg) Rest of the world: Height: 182.00 mm (7.17 in.) Width: 36.00 mm (1.42 in.) Depth: 178.00 mm (7.00 in.) Weight: 0.94 kg (2.06 lbs)
CAMERA	No camera
AUDIO & SPEAKERS¹	Realtek Audio Controller, ALC3204-CG
CHASSIS	N/A
WIRELESS	Intel® AX210, 2x2 MIMO, 2400 Mbps, 2.40 GHz/5.00 GHz/6.00 GHz, Wi-Fi 6E ¹³ (WiFi 802.11ax), Bluetooth® 5.2 Intel® 9560ac, 2x2 MIMO, 1733 Mbps, 2.40 GHz/5.00 GHz, Wi-Fi 5 (Wi-Fi 802.11ac), Bluetooth® 5.1*
PRIMARY BATTERY	No battery
POWER	65 W AC adapter, 4.5 mm barrel
REGULATORY^{8,12}	Product Safety, EMC and Environmental Datasheets: https://www.dell.com/learn/us/en/uscorp1/product-info-datasheets-safety-emc-environmental Dell Regulatory Compliance Home Page: https://www.dell.com/learn/us/en/uscorp1/regulatory-compliance?s=corp Dell and the Environment: https://corporate.delltechnologies.com/en-us/social-impact/advancing-sustainability/sustainable-supply-chain/environment.htm
CHIPSET	Integrated with the Processor
HARDWARE SECURITY	Padlock ring Kensington security-cable slot Chassis intrusion switch
RECOMMENDED ACCESSORIES	Audio and Speakers: Dell Slim Soundbar - SB521A Audio Headsets: Dell Pro Stereo Headset - WH3022 Dell Slim Soundbar - SB521A Mounting Options: OptiPlex Micro and Thin Client Vertical Stand OptiPlex Micro and Thin Client Wall Mount OptiPlex Micro and Thin Client PSU Adapter Sleeve OptiPlex Micro and Thin Client Pro 2 E Series Monitor Mount OptiPlex Micro and Thin Client Dual VESA Mount OptiPlex Micro and Thin Client All-in-One Stand (MFS22)
SYSTEMS MANAGEMENT	DCA enabler to support Dell Hybrid Client (Ubuntu only) Wake on Lan & PXE wired LOM Wake on LAN & PXE - Dock NIC Wake on WLAN, WLAN/WWAN BIOS disable on LAN No OOB Management
CONFIGURATION SERVICES	Factory image load BIOS customization Hardware customization Asset Tagging and Reporting Wyse Management Suite Standard version Wyse Management Suite Pro version (optional)
ADD-IN CARDS	N/A

PRODUCT DISCLOSURES FROM PAGES 2-5

* Based on internal analysis, April 2021. 20% closed-loop recycled aluminum by weight in the 2TB 3.5" hard drive, optional on the OptiPlex 7090 Tower and 7090 Small Form Factor.

**EPEAT registered where applicable. EPEAT registration varies by country. See www.epeat.net for registration status by country.

1 Based on Dell analysis of Dell ThinOS v. competitive products, September 2021. CLM-003191

2 Available on select operating systems only at launch

3 EPEAT Gold/Silver registered in the U.S. EPEAT registration varies by country. See www.epeat.net for registration status by country.

Subject to service provider's broadband subscription and coverage area; speeds may vary. Additional charges will apply. Contact your service provider for details.

4 Offering may vary by region. Some items may be available after product introduction. For complete details, refer to the technical documentation published on www.dell.com/support.

5 Based on Dell analysis, October 2021, measuring Dell ThinOS automated deployment from Wyse Management Suite. Actual results will vary depending on system, network and IT environment configuration. CLM-003540

6 Based on Dell analysis, October 2021, measuring Dell ThinOS automated configuration from Wyse Management Suite. Actual results will vary depending on system, network and IT environment configuration. CLM-003541

7 The maximum number of displays and maximum resolution in a session will vary depending on partner broker, protocol, and virtual machine types and configurations

TECHNICAL SPECIFICATION DISCLOSURES FROM PAGE 7

1 Offering may vary by region. Some items may be available after product introduction. For complete details, refer to the Technical Guidebook published on www.dell.com/support.

2 System Memory and Graphics: Significant system memory may be used to support graphics, depending on system memory size and other factors.

3 4GB or Greater System Memory Capability: A 64-bit operating system is required to support 4GB or more of system memory.

4 Particular versions of Microsoft Windows may not support the full Bluetooth 4.2 functionality

5 Storage Option: GB means 1 billion bytes and TB equals 1 trillion bytes; actual capacity varies with preloaded material and operating environment and will be less.

6 TPM is available in selected regions.

7 Computrace: Not a Dell offer. Certain conditions apply. For full details, see terms and conditions at www.ijackforlaptops.com.

8 Please refer to www.epeat.net for specific country registration rating and participation.

9 Limited Hardware Warranty: For copy of Ltd Hardware Warranty, write Dell USA LP, Attn: Warranties, One Dell Way, Round Rock, TX 78682 or see www.dell.com/warranty.

10 on-site service after Remote Diagnosis: Remote Diagnosis is determination by online/phone technician of cause of issue; may involve customer access to inside of system and multiple or extended sessions. If issue is covered by Limited Hardware Warranty (www.dell.com/warranty) and not resolved remotely, technician and/or part will be dispatched, usually within 1 business day following completion of Remote Diagnosis. Availability varies. Other conditions apply.

11 Dell Services: Availability and terms of Dell Services vary by region. For more information, visit www.dell.com/servicesdescriptions.

12 For complete listing of declarations and certifications, refer to the Dell Regulatory and Environmental Datasheet found in the Manuals section of Product Support information

13 Available on select operating systems only at launch

14 Windows 10 IoT Enterprise LTSC 2021 only

www.dell.com/support/home/us/en/19