



MB2546adwe

Productivity. Reliability. Value.



MB2546adwe with optional trays



This is a Class A device according to the FCC Rules and international electromagnetic emissions standards. This device is not intended for use in residential or domestic environments due to potential interference to radio communications.

Lexmark MB2546adwe

Mid-size workgroups can work fast and still run economically with the MB2546adwe, the up-to 46 page-per-minute* multifunction product with standard Wi-Fi and long-life components that rarely need replacement. A multi-core processor, 1 GB of memory, durable design and long list of standard features make it an exceptional value.



Get more done

- ▶ Print, copy, scan and fax with the power of a 1 GHz quad-core processor, 1 GB of memory and standard Wi-Fi.
- ▶ Get up to 46-page-per-minute printing and scan up to 45 images per minute.
- ▶ Intuitive 4.3-inch color touch screen offers smooth, tablet-like interaction.
- ▶ Built-in productivity apps save time and improve efficiency.

Ready when you are

- ▶ Long-life fuser and imaging components extend uptime.
- ▶ Unison™ Toner replacement cartridges deliver up to 10,000 pages** of high-quality printing.
- ▶ Maximum input capacity of 2000 pages means fewer interruptions.
- ▶ Durable metal frame is designed for longevity.

Robust, built-in security

- ▶ Lexmark's full-spectrum security architecture helps keep your information safe—on the document, the device, over the network, and everywhere in between.
- ▶ A range of embedded features harden device against attacks.
- ▶ Standard Confidential Print feature helps ensure output security via simple PIN.
- ▶ Keypoint Intelligence - Buyers Lab honored Lexmark with a prestigious BLI PaceSetter award for Document Imaging Security***.



Built for planet earth

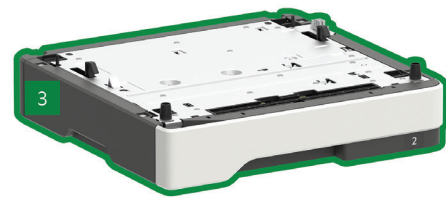
- ▶ Energy management features reduce power consumption in active use or sleep mode.
- ▶ Standard two-sided printing saves paper.
- ▶ Use of post-consumer recycled content in manufacturing saves natural resources.
- ▶ Device is rated EPEAT® Silver and ENERGY STAR® certified.
- ▶ Recycle cartridges through the award-winning Lexmark Cartridge Collection Program (LCCP).

*Print and copy speeds measured in accordance with ISO/IEC 24734 and ISO/IEC 24735 respectively (ESAT). For more information see: www.lexmark.com/ISOspeeds.

**Average standard page yield value declared in accordance with ISO/IEC 19752.

***Award based on North America and/or Western Europe data

Lexmark MB2546adwe



- 1 Multifunction product with 4.3-inch (10.9 cm) color touch screen
18.8 x 19.3 x 16.9 inches
477 x 489 x 429.5 mm
- 2 550-sheet tray
5 x 15.7 x 14.7 inches
126 x 389 x 374 mm

- 3 250-sheet tray
3.7 x 15.7 x 14.7 inches
95 x 389 x 374 mm

Standard

Optional

Supports up to three optional trays.

© 2018 Lexmark. All rights reserved.

Lexmark, the Lexmark logo and Unison are trademarks of Lexmark International, Inc., registered in the United States and/or other countries. AirPrint and the AirPrint Logo are trademarks of Apple, Inc. ENERGY STAR® is a U.S. registered mark. EPEAT® is a trademark of EPEAT, Inc. in the United States and other countries. Google Cloud Print is a trademark of Google, Inc. MOPRIA®, the Mopria® Logo™ and the Mopria® Alliance logos are trademarks, service marks, and certification marks of Mopria Alliance, Inc. in the United States and other countries. All other trademarks are the property of their respective owners.

This product includes software developed by the OpenSSL Project for use in the Open SSL Toolkit ([http:// www.openssl.org/](http://www.openssl.org/)).

Product specifications		Lexmark MB2546adwe
Printing		
Display	Lexmark e-Task 4.3-inch (10.9 cm) color touch screen	
Print Speed: Up to ⁶	Black: 46 ppm	
Time to First Page: As fast as	Black: 6 seconds	
Print Resolution	Black: 1200 Image Quality, 1200 x 1200 dpi, 2400 Image Quality, 600 x 600 dpi	
Memory / Processor	Standard: 1024 MB / Maximum: 1024 MB / Dual Core, 1000 MHz	
Hard Disk	Option available	
Recommended Monthly Page Volume ²	2000 - 15000 pages	
Maximum Monthly Duty Cycle: Up to ³	120000 pages per month	
Copying		
Copy Speed: Up to ⁶	Black: 46 cpm	
Time to First Copy: As fast as	Black: 6 seconds	
Scanning		
Scanner Type / ADF Scan	Flatbed scanner with ADF / RADF (Reversing Duplex)	
A4/Ltr Duplex Scan Speed: Up to	Black: 20 / 20 sides per minute / Color: 10.5 / 10.5 sides per minute	
A4/Ltr Simplex Scan Speed: Up to	Black: 42 / 45 sides per minute / Color: 20 / 22 sides per minute	
ADF Paper Input Capacity: Up to	50 pages 20 lb or 75 gsm bond	
Faxing		
Modem Speed	ITU T.30, V.34 Half-Duplex, 33.6 Kbps	
Supplies ⁷		
Laser Cartridge Yields (up to) ¹	3,000-page Cartridge, 6,000-page High Yield Cartridge, 10,000-page Extra High Yield Cartridge	
Imaging Unit Estimated Yield: Up to	60000 pages, based on 3 average letter/A4-size pages per print job and ~ 5% coverage	
Cartridge(s) Shipping with Product ¹	3,000-page starter Return Program Toner Cartridge	
Paper Handling		
Included Paper Handling	250-Sheet Input, 100-Sheet Multipurpose Feeder, 150-Sheet Output Bin, Integrated Duplex	
Optional Paper Handling	250-Sheet Tray, 550-Sheet Tray, 550-Sheet Lockable Tray	
Paper Input Capacity: Up to	Standard: 350 pages 20 lb or 75 gsm bond / Maximum: 2000 pages 20 lb or 75 gsm bond	
Paper Output Capacity: Up to	Standard: 150 pages 20 lb or 75 gsm bond / Maximum: 150 pages 20 lb or 75 gsm bond	
Media Types Supported	Card Stock, Envelopes, Paper Labels, Plain Paper, Transparencies, Refer to the Card Stock & Label Guide.	
Media Sizes Supported	10 Envelope, 7 3/4 Envelope, 9 Envelope, A4, A5, DL Envelope, Executive, Folio, JIS-B5, Legal, Letter, Statement, Universal, Oficio, A6	
General Information ⁴		
Standard Ports	One Internal Card Slot, USB 2.0 Specification Hi-Speed Certified (Type B), Gigabit Ethernet (10/100/1000), 802.11b/g/n Wireless, Front USB 2.0 Specification Hi-Speed Certified port (Type A), Rear USB 2.0 Specification Hi-Speed Certified Port (Type A)	
Optional Local Ports	Internal RS-232C serial, Internal 1284-B Bidirectional Parallel	
Noise Level: Operating	Print: 56 dBA / Copy: 56 dBA / Scan: 55 dBA	
Specified Operating Environment	Humidity: 8 to 80% Relative Humidity, Temperature: 10 to 32°C (50 to 90°F), Altitude: 0 - 5000 Meters (16,404 Feet)	
Limited Warranty - See Statement of Limited Warranty	1-Year Onsite Service, Next Business Day	
Size (in. - H x W x D) / Weight (lb.)	18.8 x 19.3 x 16.9 in. / 45.5 lb.	

All information in this brochure is subject to change without notice. Lexmark is not liable for any errors or omissions.

This is a Class A device according to the FCC Rules and international electromagnetic emissions standards. This device is not intended for use in residential or domestic environments due to potential interference to radio communications.

¹Average standard page yield value declared in accordance with ISO/IEC 19752. ²"Recommended Monthly Page Volume" is a range of pages that helps customers evaluate Lexmark's product offerings based on the average number of pages customers plan to print on the device each month. Lexmark recommends that the number of pages per month be within the stated range for optimum device performance, based on factors including: supplies replacement intervals, paper loading intervals, speed, and typical customer usage. ³"Maximum Monthly Duty Cycle" is defined as the maximum number of pages a device could deliver in a month using a multishift operation. This metric provides a comparison of robustness in relation to other Lexmark printers and MFPs. ⁴Printers are sold subject to certain license/agreement conditions. See www.lexmark.com/printerlicense for details. ⁵Actual Yield may vary based on other factors such as device speed, paper size and feed orientation, toner coverage, tray source, percentage of black-only printing and average print job complexity. ⁶Print and copy speeds measured in accordance with ISO/IEC 24734 and ISO/IEC 24735 respectively (ESAT). For more information see: www.lexmark.com/ISOspeeds. ⁷Product functions only with replacement cartridges designed for use in a specific geographical region. See www.lexmark.com/regions for more details.