



ASUS Chromebook Flip C213

BUILT TOUGH. BUILT SMART.

TOUGH, FLIP, TOUCH &
EASY REPAIR FOR EDUCATION.

The ASUS Chromebook Flip C213 is designed to be a robust and highly versatile education aid in schools. The tough military grade C213 can withstand the daily rigor and intense usage within the school or on field trips plus the flip versatility allows it to be opened to any angle. The touch display and the EMR pen¹ also add another enriching dimension to the learning experience when using the C213.

Military grade toughness

Built to withstand every hazard in school.

Robust and reinforced rubber wrapped protective guard – Reduces the impact from any accidents. All 4 exterior edges and corners of the C213 are protected, using reinforced nano-molding technology, offering maximum security for critical components.

Surpassed durability testing² – Best-in-class drop test from a height of 120cm ensures function without disruption.

Protective texture – With the textured anti-scratch and anti-fingerprint surface, the C213 lasts longer from the extensive daily usage.

Zinc alloy hinge cap – Reinforced hinge with an all steel internal structure which has passed the 40,000-swing test (0 to 360-degree).

Reinforced structure – Reinforced with steel protection to the LCD/panel, all 4 corners, the touch pad holder, keyboard plate, I/O ports as well as the rubber speaker holder to decrease vibration.

Easy grip design – 2 strategically placed grips provide better holding traction and reduce any slipping incidents.

Spill-resistant keyboard² – Tested to repel up to 66cc of liquid ensures that the C213 functions without any issue in the all too common accidental spillage of liquid in daily usage.

Flip versatility & touch display

More convenient and a better user experience all round.

360-degree flip with 4 viewing modes – The 360-degree flip mechanism allows the C213 to be opened to any desired angle to fit the required situation. Maximum versatility also caters to 4 viewing modes from a laptop, tablet, stand, to tent mode.

Intuitive touch screen – Touch learning allows for more interaction and encourages a higher level of discussion among the students.

High-response stylus – Benefit from a new learning experience with the EMR pen¹ for better productivity, easy formula calculation, taking notes, intuitive edit plus a whole new way of expression from drawing, coloring to sketching. The battery-free EMR pen is environment-friendly and there is also no risk of battery leak.

180-degree hinge allows a fully open Chromebook – Ideal for easy viewing, especially for group discussion and for sharing of the same Chromebook. The robust hinge ensures that the Chromebook can open to a flat-bed position without worries.

2mm travel distance which makes for an ideal typing experience for children – Better keyboard control with 2.0mm travel distance for more accurate typing and for a better feel.

Anti-glare display³ – The display is less strenuous to the eyes even when viewed in sunlight. The robust Corning Gorilla cover glass display (non-matte), which comes as an option, provides added protection.

Dual camera HD+5MP – The ingenious dual camera function allows for video conference and photography, taking the learning experience to a whole new level of creativity and collaboration.

More than 10 hours of battery life⁴ – Ensures learning is uninterrupted even when an external power source is unavailable.

Easy on-site maintenance* & tear down key components in minutes

Minimizing downtime and extending refresh cycles.

Minimized downtime means lowering total cost of ownership – Downtime affects the running cost of IT in schools. Minimizing downtime not only leads to cost saving but also means the C213 is where it is supposed to be in the classroom.

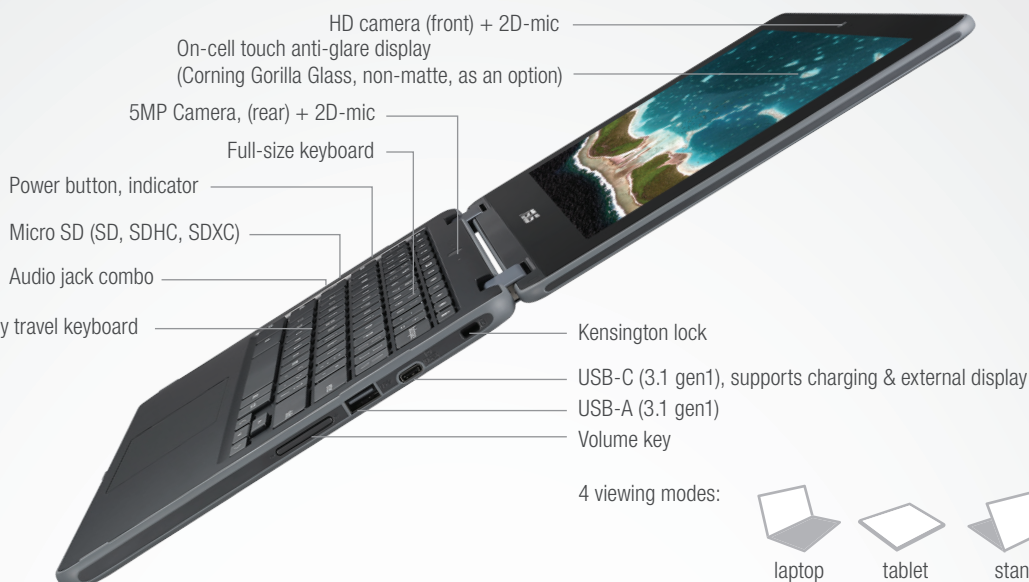
Key components can be dismantled in 4 steps within minutes – Remove keyboard, thermal module, battery, and motherboard in 4 hassle-free steps. By easing the maintenance for the C213, the device can have longer refresh cycles, saving time and money.

Modular components design for simpler replacement of parts – Reach what needs to be replaced without having to remove other parts.

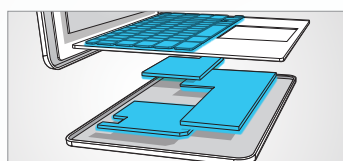
Powered by Intel® Celeron® processor.
Intel Inside®. Powerful Productivity Outside.
Found at www.asus.com.
Intel, the Intel logo, Intel Inside, Intel Inside logo, Celeron and Celeron Inside
are trademarks of Intel Corporation in the U.S. and/or other countries.



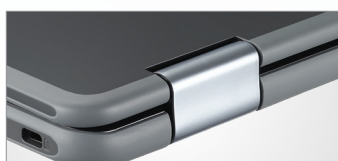
*Applicable for customers who have enrolled in the ASUS Authorized Service Provider Program



Tough rubber guard:
Robust reinforcement reduces the impact from any accidents.



Dual-camera:
Easy on-site repair:
Tear down key components in minutes minimizing downtime and extending refresh cycles.



Robust hinge:
Zinc alloy hinge passed 40,000-swing test and has reinforced steel structure.



Easy grip:
2 strategically placed grips offer better traction to prevent slipping.



Anti-glare:
Less strenuous to the eyes even in the Sun. There is also an option for the Corning Gorilla glass display (non-matte).



Dual-camera:
More collaborative and creative learning experience with the dual-cam for video conference and photography.



Responsive stylus:
Highly precision EMR pen¹ for taking notes and drawing.



More than 10-hour battery life:
Long lasting for uninterrupted learning.

SPECIFICATIONS

Model	ASUS Chromebook Flip C213
Processor	Intel® Celeron® Dual-Core N3350 Processor, 1.1GHz (2 M Cache, up to 2.48 GHz)
Operating System	Chrome OS
Chipset	Integrated Intel® CPU
Memory	LPDDR4 2400 MHz SDRAM, OnBoard Memory 4 GB
Display	11.6" 16:9 HD (1366x768) anti-glare, on-cell touch; 11.6" 16:9 HD (1366 x768) Glare, on-cell touch stylus supported, Corning Gorilla cover glass (option)
Graphic	Integrated Intel® HD Graphics
Storage	eMMC 5.1 32 GB
Card Reader	3-in-1 card reader (Micro SD, Micro SDXC, Micro SDHC)
Camera	HD Web Camera + 5 megapixel rear camera
Networking	Built-in Bluetooth™ V4.0
Interface	USB 3.1 gen1 Type-C full function (support DP, PD, charging) x 2 USB 3.1 Type-A x 2, Micro SD x 1, Headset x 1, Kensington lock x1
Audio	Embedded stereo speaker, 4D-Mic
Battery	46 Whrs, 4 Cells Li-Polymer
Power Adapter	Plug Type: USB Type-C, Output: 15 V DC, 3 A, 45 W, Input: 100 -240 V AC, 50/60 Hz universal
Dimensions	307 x 199 x 20.65mm (W x D x H); 307 x 199 x 20.9mm (W x D x H) Corning Gorilla cover glass (option)
Weight	1.238 kg with Battery
Security	Kensington lock, Google H1 security chip
Certificates	UL, CE Marking Compliance, FCC Compliance, CB, EPEAT, EU Flower, Energy star, CECP, WEEE, Erp 2013
Manufacturer Warranty	Up to 3-year limited International hardware warranty. *different by country 1-year battery pack warranty

Disclaimer:

All specifications are subject to change without notice. Please check with your supplier for exact offers. Brand and product names mentioned are trademarks of their respective companies. Colors of products may not be perfectly accurate due to variations caused by photography and monitor settings. Although we endeavor to present the most accurate and comprehensive information at the time of publication, we reserve the right to make changes without prior notice. ¹EMR pen is optional and supports the Corning Gorilla cover glass display only. ²Based on ASUS's internal testing, of Chromebooks with rubberized durability features, including rubber frames and bumpers that pass a 120cm drop test and keyboards that pass a 66cc spill-resistance test. ³The anti-glare display comes as standard while the Corning Gorilla cover glass display (non-matte) is optional. ⁴Based on Chromium OS power LoadTest. 10 hours was determined by looping local video playback at higher than 80 nits and the default display brightness level. Battery life may vary depending on usage type and conditions.

Powered by Intel® Celeron® processor.
Intel Inside®. Powerful Productivity Outside.
Found at www.asus.com.
Intel, the Intel logo, Intel Inside, Intel Inside logo, Celeron and Celeron Inside are trademarks of Intel Corporation in the U.S. and/or other countries.

